

MOD-FPS2KIT150(-B)



Display size  
**46"-90"**



Max load  
**211lb (96kg)**  
per display

# Modular Series Dual Pole Ceiling Kit

FOR 46" TO 90" DISPLAYS

Peerless-AV's Modular Mount Series features a full range of products to fulfill multiple requirements with a limited number of components. The universality of the components allows you to configure your own perfect custom flat-panel display or projector mounting solution for any application. The Modular Mount Series was developed with the professional AV installer in mind with a 2" (50mm) diameter support pole that can be easily cut to length on the job site making it ideal for new projects as well as for upgrading existing installations. The MOD-FPS2KIT150(-B) Ceiling mount kit helps eliminate guesswork, so you can create the perfect installation.

*The universal design of the MOD-FPS2KIT150(-B) allows you to configure your desired application just the way you want it, making a perfect installation possible.*

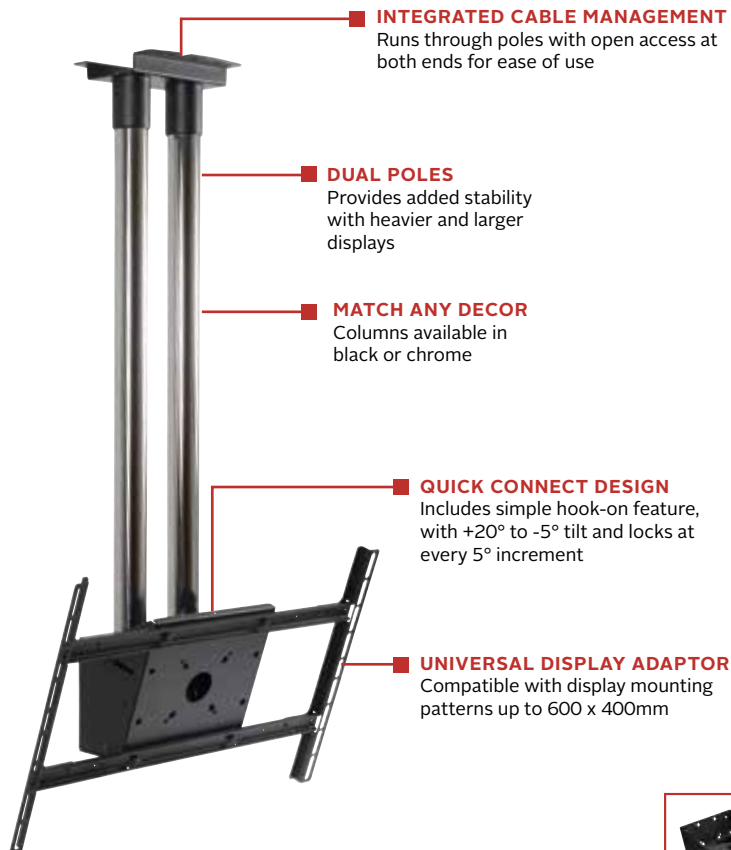


## Additional Features

- ✓ Kit includes:
  - Flat ceiling plate
  - Two 59" (1.5m) extension poles
  - Single display mount
  - Large universal adaptor
- ✓ Heavy-duty flat ceiling plate securely mounts to wood or concrete ceilings
- ✓ Universal display adaptor for 46" to 90" displays with VESA® mounting patterns up to 600 x 400mm
- ✓ Modular design allows additional displays to be stacked on the dual poles

# Touchboards

205 Westwood Ave, Long Branch, NJ 07740  
Phone: 866-94 BOARDS (26273) / (732)-222-1511  
Fax: (732)-222-7088 | E-mail: sales@touchboards.com



Install up to 2 displays in a back-to-back configuration using the Dual Pole Back-to-Back Display Mount accessory, MOD-FPMD2. (MOD-UNL2 may be required)



info@peerless-av.com  
peerless-av.com

peerless-AV®

MOD-FPS2KIT150(-B) Modular Series Dual Pole Ceiling Kit for 46" to 90" Displays

**Product Specifications**

	DIMENSIONS (W x H x D)	PRODUCT WEIGHT	LOAD CAPACITY	FINISH	AVAILABLE COLORS
MOD-FPS2KIT150(-B)	24.57" x 64.04" x 7.48" (624 x 1627 x 190mm)	31.8lb (14.45kg)	211lb (96kg) per display - up to 2 displays when used back to back	Powder Coat or Chrome	MOD-FPS2KIT150: Black with chrome poles MOD-FPS2KIT150-B: Black with black poles

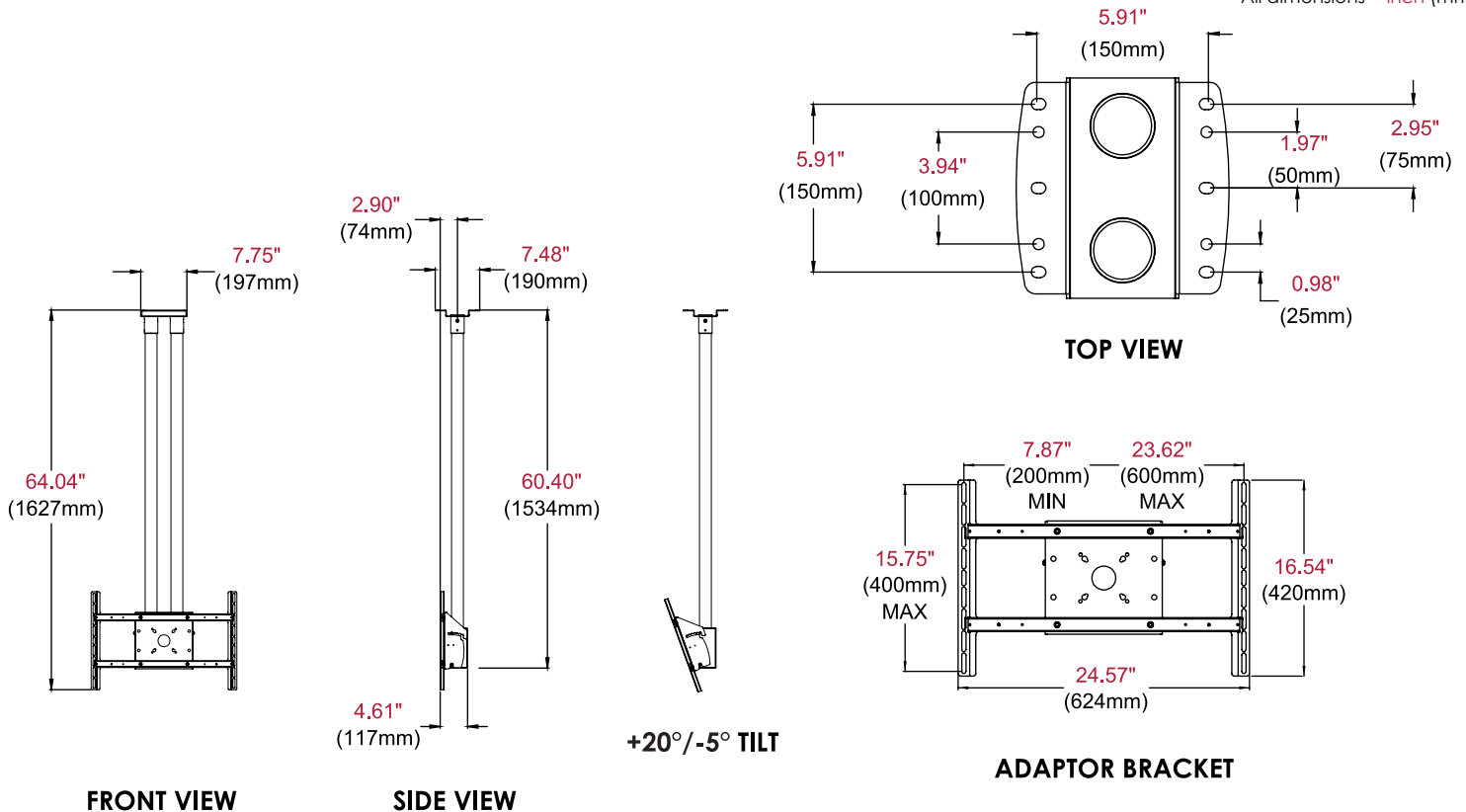
**Package Specifications**

	PACKAGE SIZE (W x H x D)	PACKAGE SHIP WEIGHT	PACKAGE UPC CODE	PACKAGE CONTENTS	UNITS IN PACKAGE
MOD-FPS2KIT150(-B)	BOX1: 25.38" x 14.50" x 5.75" (645 x 368 x 146mm)	21.5lb (9.77kg)	MOD-FPS2KIT150: 735029301752	MOD-CPF2, MOD-FPMS2, MOD-UNL2, (2) MOD-P150, Mounting hardware & instructions	1
	BOX 2 & 3: 61.00" x 2.50" x 2.50" (1549 x 64 x 64mm)	7.4lb (3.36kg) each	MOD-FPS2KIT150-B: 735029301820		

**Accessories**

- MOD-ACF2:** Dual Pole Cosmetic Cover
- MOD-FPMD2:** Dual Pole Back-to-Back Display Mount
- MOD-UNL2:** Large Universal Adaptor
- ACC925:** Security Fastener Pack

All dimensions = inch (mm)



**Architect Specifications**

The Modular Series Dual Pole Ceiling Kit shall be a Peerless-AV model MOD-FPS2KIT150(-B) and shall be located where indicated on the plans. Assembly and installation shall be done according to instructions provided by the manufacturer.

Visit [peerless-av.com](http://peerless-av.com) to see the complete line of AV solutions from Peerless-AV, including outdoor displays, wireless, kiosks, digital audio, display mounts, projector mounts, carts/stands, and a full assortment of accessories.

**Peerless-AV**  
2300 White Oak Circle  
Aurora, IL 60502 USA  
**(800) 865-2112**  
**(630) 375-5100**  
**Fax: (800) 359-6500**

**Peerless-AV Europe**  
Unit 3 Watford Interchange  
Colonial Way, Watford  
Herts, WD24 4WP  
United Kingdom  
**+44 (0) 1923 200100**  
**Fax: +44 (0) 1923 200101**

**Peerless-AV de México**  
Ave de las Industrias 413  
Parque Industrial Escobedo  
Escobedo, N.L.,  
Mexico 66050  
**+52 (81) 8384-8300**  
**Fax: +52 (81) 8384-8360**

