

PLB-1



Display size
up to 90"



Max load
150lb (68.2kg)
per display

Back-to-Back Ceiling Mount

TILT BOX FOR TWO DISPLAYS UP TO 90"

The SmartMount® PLB-1 Back-to-Back Ceiling Mount works with all 1.5" NPT extension pipes for versatility, support, and connection. The 1.5" NPT threaded pipes make it simple to customize each mount to your specific application. The Back-to-Back Ceiling Mount can be used in conjunction with Peerless-AV®'s AEC or EXT columns, along with the PLP adaptor plates for custom ceiling mount applications. Each side of the tilt box provides -5° to 20° of forward tilt, and 360° of swivel, making it possible to find the perfect viewing angle. Not compatible with AEC006009, EXT002 and EXT006 extension columns.

With 360° of side-to-side swivel you can create endless viewing possibilities from anywhere within your application.



Touchboards

205 Westwood Ave, Long Branch, NJ 07740
Phone: 866-94 BOARDS (26273) / (732)-222-1511
Fax: (732)-222-7088 | E-mail: sales@touchboards.com

Additional Features

- ✓ -5° to 20° adjustable tilt (tilt range may vary based on display size)
- ✓ 360° swivel
- ✓ Works with standard 1.5" NPT Pipe (1.9" dia)
- ✓ VESA® 75 x 75 and 100 x 100mm mounting pattern provided (display mounting hardware ACC918 not included)
- ✓ Additional display mounting adaptor plates available (sold separately)
- ✓ Ceiling plate and extension columns required (sold separately)
- ✓ Landscape or portrait orientation

EASY ADJUSTMENT

-5° to 20° of adjustable tilt for each display helps set the perfect viewing angle

MAXIMUM VIEWING POSSIBILITIES

Entire unit swivels 360° with swivel-stop feature



Universal I-Shaped Adaptor plate
PLP-UNL, sold separately



PLB-1: Back-to-Back Ceiling Mount tilt box for two displays up to 90"

Product Specifications

	DIMENSIONS (W x H x D)	PRODUCT WEIGHT	LOAD CAPACITY	FINISH	AVAILABLE COLORS
PLB-1	5.60" x 5.22" x 8.82" (142 x 133 x 224mm)	4.5lb (2kg)	300lb (136kg) 150lb (68.2kg) per display	Powder Coat	Black

Package Specifications

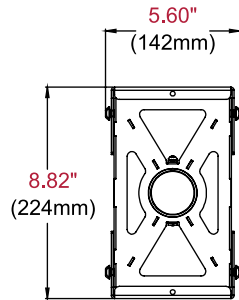
	PACKAGE SIZE (W x H x D)	PACKAGE SHIP WEIGHT	PACKAGE UPC CODE	PACKAGE CONTENTS	UNITS IN PACKAGE
PLB-1	6.25" x 6.00" x 9.63" 159 x 152 x 245mm	6.0lb (2.7kg)	735029215233	Back-to-back tilt box, mounting collar and Installation instructions	1

Accessories

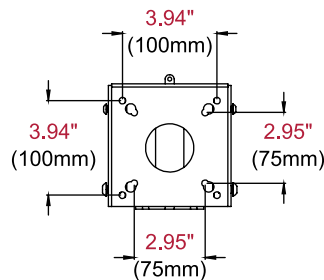
DCS, DCT Models: Ceiling Plates
ADD Models: Ceiling Extensions
AEC and EXT Models*: Ceiling Extensions
 * Excluding EXT002, EXT006 and AEC609

PLP-UNM: Universal I-Shaped Adaptor for 32" to 90" Displays
PLP-UNL: Universal I-Shaped Adaptor for 22" to 50" Displays
ACC450: Adaptor Bracket for up 22" to 40" Displays
ACC918: VESA® 75 x 75 & 100 x 100mm Security Fasteners

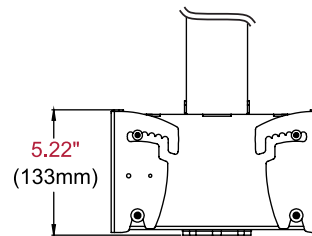
All dimensions = inch (mm)



TOP VIEW



FRONT VIEW



**SIDE VIEW
20° TILT**

Architect Specifications

The Dual-Display Ceiling Mount shall be a Peerless-AV model PLB-1 and shall be located where indicated on the plans. Assembly and installation shall be done according to instructions provided by the manufacturer.

Visit peerless-av.com to see the complete line of AV solutions from Peerless-AV, including outdoor displays, wireless, kiosks, digital audio, display mounts, projector mounts, carts/stands, and a full assortment of accessories.

Peerless-AV
 2300 White Oak Circle
 Aurora, IL 60502 USA
(800) 865-2112
(630) 375-5100
Fax: (800) 359-6500

Peerless-AV Europe
 Unit 3 Watford Interchange
 Colonial Way, Watford
 Herts, WD24 4WP
 United Kingdom
+44 (0) 1923 200100
Fax: +44 (0) 1923 200101

Peerless-AV de México
 Ave de las Industrias 413
 Parque Industrial Escobedo
 Escobedo, N.L.,
 Mexico 66050
+52 (81) 8384-8300
Fax: +52 (81) 8384-8360

