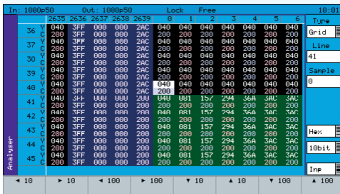




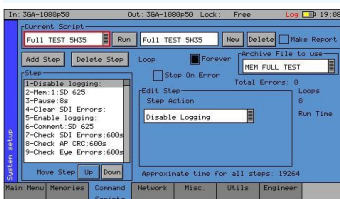
**PHABRIX<sup>®</sup>**  
broadcast excellence

**ENGINEERING  
BUNDLE**

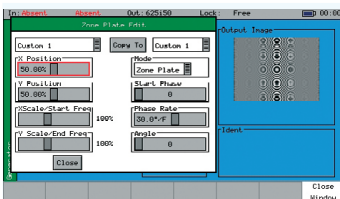
We have introduced a new 'Engineering bundle' (Order reference PHSXO-ENG) which if purchased on new unit, offers a discount of approximately 40% over the collection of options offered. This is ideal for customers who wish to purchase all the options as part of a single deal. Bundle options included in the 40% off deal. All the features below for one single price!



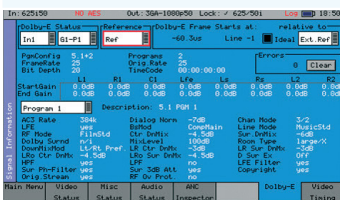
The **SDI analysis option** provides the engineer with a detailed view of the data words contained within the SDI stream. This allows the analysis of complex faults and is particularly useful when determining compatibility issues between equipment and when debugging new product developments particularly in a R&D environment.



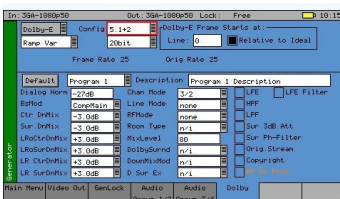
The **Command scripts with print report option** allows a series of pre-defined actions such as controlling the generator, analyser and logging functions within the PHABRIX instrument using a script stored in internal memory. A print report feature allows an internal HTML form to be auto filled with parameters set and subsequently downloaded and printed. Exceptional ease of use.



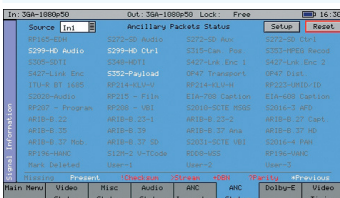
The **Programmable moving zone plate option** can be used to test a range of video processing requirements using horizontal, vertical and temporal (time) controls. Temporal control is particularly useful for testing up/down converters/monitors and applications which compress signals.



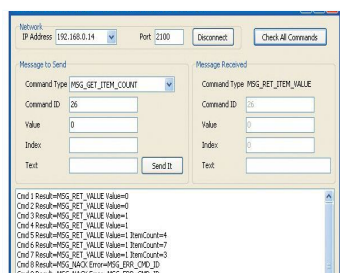
The **Dolby bit-stream Analyzer option** displays Dolby E, Dolby Digital and Dolby Digital Plus metadata present in a selected audio stream and determines whether the Dolby E packet is timed correctly on the SDI video stream. The Dolby audio may be monitored from any of the SDI input embedded audio channel pairs or the AES input. Peak audio levels are also displayed for Dolby E.



The **Dolby bit-stream generator option** uniquely adds significant Dolby E, Dolby Digital and Dolby Digital Plus metadata generation features to the Sx range.



The **Ancillary data status option** provides a very quick status view of the ancillary data present in a SDI signal. It does not decode the data fully and is intended to be a fast analysis tool to show if a packet type is present, absent or red if in fault. Full logging is available along with DID and SDID custom setup.



The **Enhanced remote control option** allows full remote control of the instrument via TCP/IP Sockets to allow any aspect of the unit to be modified or queried. Complex applications can be created to perform test and measurement functions such as automated testing of routers or other broadcast equipment and infrastructure.

Order reference PHSXO-ENG