

MODULAR SOLUTIONS

**RX SERIES**  
RACK MOUNT  
TEST AND MEASUREMENT

RX rack mount  
modularity

# 3x

## the choice

### RX 2000

TWO INTEGRAL SCREENS  
RASTERIZER OUTPUT  
UP TO 4 MODULES  
8 INPUTS, 4 SIMULTANEOUS



### RX 1000

RASTERIZER OUTPUT  
UP TO 4 MODULES  
8 INPUTS, 4 SIMULTANEOUS



### RX 500

RASTERIZER OUTPUT  
UP TO 2 MODULES  
4 INPUTS, 2 SIMULTANEOUS



The RX provides an unparalleled real time multi windowed environment for test and measurement and QC

# rack mount

**RX 500**  
Up to 2 modules



**RX 1000**  
Up to 4 modules



**RX 2000**  
Up to 4 modules



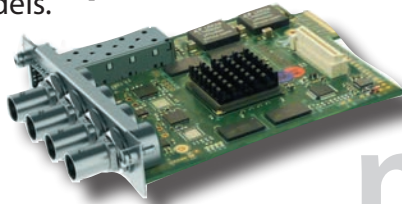
## HDMI/SDI output

- QUAD
- 14 inst sdi1
- eye sdi2
- waveform

# 1920 x 1080

The Rx chassis are available in three models. Each can accept a range of modules to create a bespoke solution for every application.

### presets



# modular

**16 instruments on view**  
**4 analyzers simultaneously**  
with 4 modules

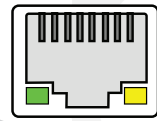


# 8 inputs

HDMI/SDI 1920 x 1080 output

## remote control connection

# connection



ethernet, browser, remote control, HDMI capture, logs,

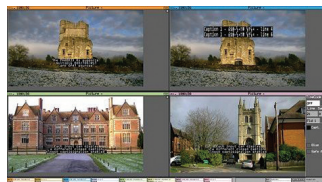
multi-frame capture

## up to 4 separate individual eye patterns



## up to 4 CC 608/708

OP47, WST



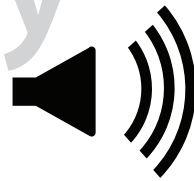
# UHD TV

**future proof**

# modularity



A single unit able to provide video and audio instruments for test and measurement in one instrument.



## audio video toolsets



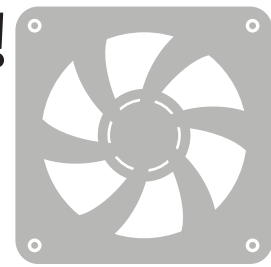
# video



## Loudness

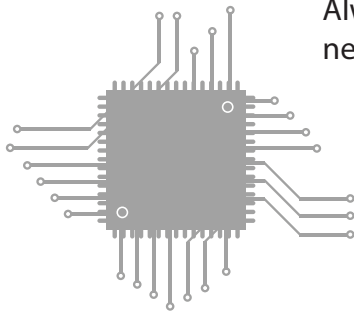
### ssssshh quiet!

Whisper quiet fan cooling across the range. The Rx series can also be controlled over KVM systems allowing the chassis to be installed in a machine room and local control selected from the KVM router.

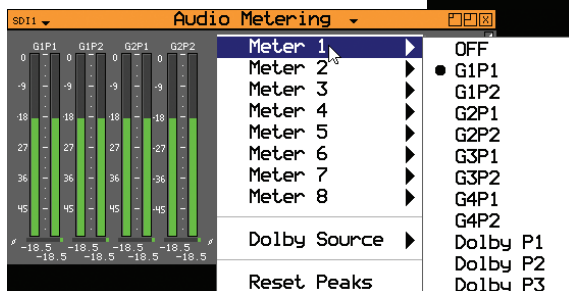


## fpga upgrade

Always have access to the latest software release. Connect to any open network and simply select 'download' for the latest version.



# sfp



## drop down menus

Control via front panel presets or full individual instrument control via keyboard and mouse or via browser connection.

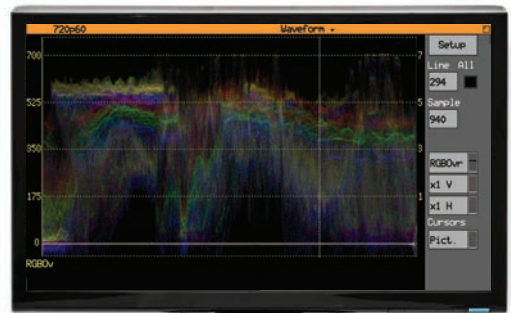


## test engineers

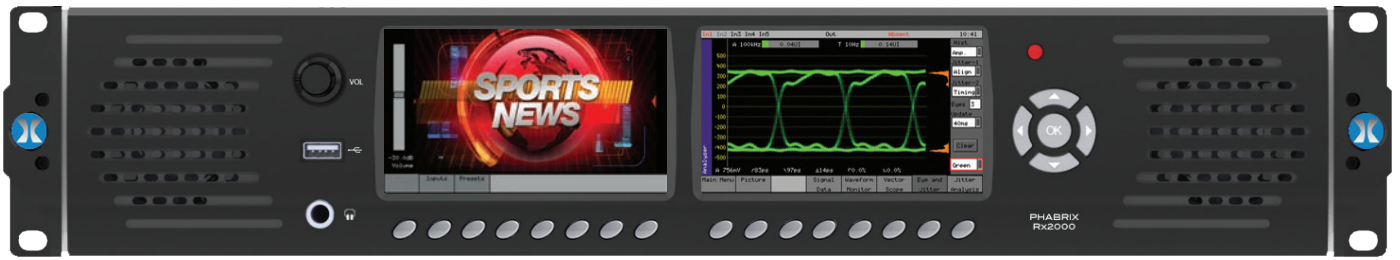
The Rx 500 and the Rx 1000 can be fitted with optional feet for desktop use. Particularly useful in a broadcast manufacturing R&D department.

## included on-board generator

Super high resolution waveform



# Rx 2000



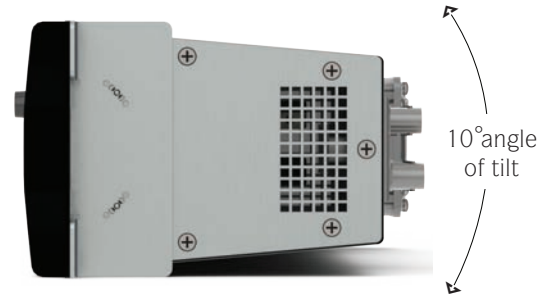
← 13cm depth →

The **RX 2000** can take up to four modules offering 4 simultaneous SDI analyzers and up to 8 individual inputs. Optical is supported via SFP's which can be inserted into the cage built into each module.

The in-rack tilt system enables the **RX 2000** to be placed in both low and high point positions in broadcast racks and OB environments.

The **RX 2000** has two integral screens plus rasterizer output at 1920 x 1080. Two full range stereo speakers provide audio confidence.

With a choice of video and audio modules within its slim 2U profile, the **RX 2000** can be found in a range of broadcast monitoring situations.



Unique 'tilt-in-bay' mechanism

# front panel display



Input/preset selection      Instrument selection (audio)



Input/preset selection      Instrument selection (generator)

Instruments for each channel can be selected from the front panel of the **RX 2000**.

At any time the engineer can take local control of up to 8 inputs available to the Rx 2000 and selectively choose the input video view in the left hand screen with the appropriate instrument in the right hand screen

Simple button presses allow the engineer to select any of the inputs connected.

HDMI/SDI output control is also available from the front screen along with preset selection. This allows local control of the output of the instrument if required.

The Rx 2000's integral full range stereo speakers provide full confidence of the audio associated with the video. The front panel volume knob allows volume control or with a simple press, instant volume mute from the built in speakers.



# Rx 1000



The RX 1000 offers PHABRIX test and measurement instrumentation in a 19" (482 mm) width 1U rasterizer format. Configured with a range of functions using its modular structure, the Rx1000 makes full use of its HDMI/SDI output with support for up to 4 modules.

The RX 1000 can display 4 simultaneous inputs with up to 8 inputs connected including optical through SFP support on each module.

As with all of the instruments provided in the Rx range, the more modules inserted into the chassis, the more cost effective this solution becomes for both audio and video test and measurement.

HDMI1		Preset		Input	
Volume:-30dB		Bank1			
Pic	Vector	Wfm	Wfm+ Vector	Audio	Eye

HDMI1		Preset		Input	
Volume:-30dB		Bank9			
Log	Dolby	Wfm	Wfm+ Vector	Eye1	Eye2

Preset1		Input		IP Address	
Volume:-30dB		Input Bank1			
In1	In2	In3	In4	In5	In6

SDI1		HDMI		Preset	
Volume:-30dB		HDMI		1080i50	
720p	1080i	1080p			

IP Address1		Gateway		NET Mask	
Volume:-30dB		192.165.0.201			
-1	+1	-10	+10	-100	+100

Input1		IP Address		Gateway	
Volume:-30dB		192.165.0.200			
-1	+1	-10	+10	-100	+100

Gateway1		NET Mask		DNS Server	
Volume:-30dB		255.255.255.255			
-1	+1	-10	+10	-100	+100

RX 1000 and RX 500 built-in front panel display

# Rx 500



For such a small profile the 1U half rack RX 500 has plenty of power. Boasting the same toolset throughout the range, the RX 500 is a perfect solution where space is minimal.

This small power house can be fitted with physical layer test and measurement modules providing 2 simultaneous SDI channels and up to 4 individual inputs with optical support.

An internal whisper quiet fan and clever extruded airflow profiles make this instrument cool in so many ways.

Two Rx 500's can be mounted side by side. There is a range of kits available for desktop, tray and half rack. Details on the back of the brochure.

SD11	1080i50 YCC422-10	GEN1	625i50 YCC422-10	SD12	1080i50 YCC422-10	SD12	Absent	SD13	720p60 YCC422-10	GEN3	625i50 YCC422-10
RE		G	100% Bars	a	RE	b	A	A		G	100% Bars
4 input	quad sdi1	quad sdi2	quad sdi3	quad sdi4	picture sdi1	picture sdi2	picture sdi3	picture sdi4			

HDMI/SDI output preset display all Rx chassis