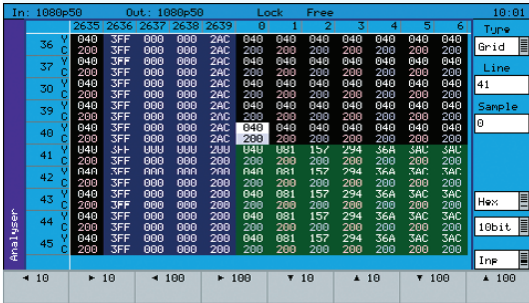


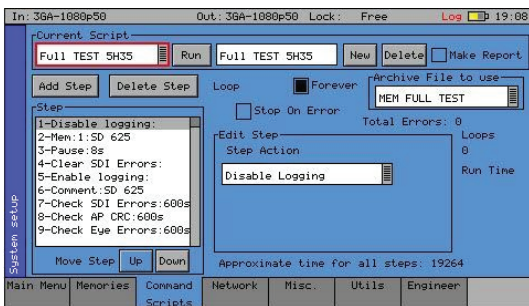


The following software options are available for the SxA, SxD and SxE instruments and can be purchased via your local PHABRIX distributor. Visit www.PHABRIX.com for details.



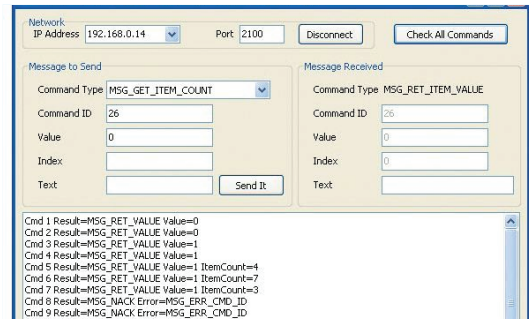
The **SDI analysis option** provides the engineer with a detailed view of the data words contained within the SDI stream. This allows the analysis of complex faults and is particularly useful when determining compatibility issues between equipment and when debugging new product developments particularly in a R&D environment.

Order reference PHSXOSD



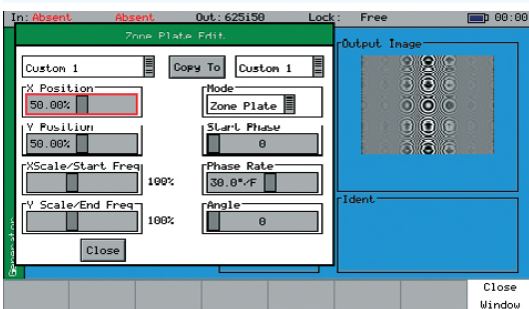
The **Command scripts with print report option** allows a series of pre-defined actions such as controlling the generator, analyser and logging functions within the PHABRIX instrument using a script stored in internal memory. A print report feature allows an internal HTML form to be auto filled with parameters set and subsequently downloaded and printed. Exceptional ease of use.

Order reference PHSXOS



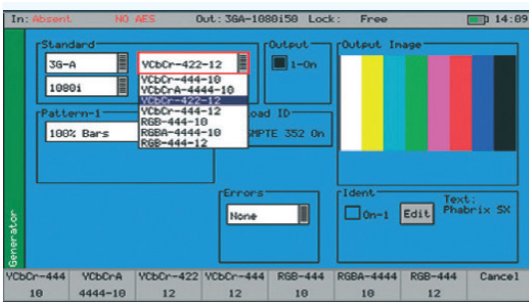
The **Enhanced remote control option** allows full remote control of the instrument via TCP/IP Sockets to allow any aspect of the unit to be modified or queried. Complex applications can be created to perform test and measurement functions such as automated testing of routers or other broadcast equipment and infrastructure.

Order reference PHSXOR



The **Programmable moving zone plate option** can be used to test a range of video processing requirements using horizontal, vertical and temporal (time) controls. Temporal control is particularly useful for testing up/down converters/monitors and applications which compress signals.

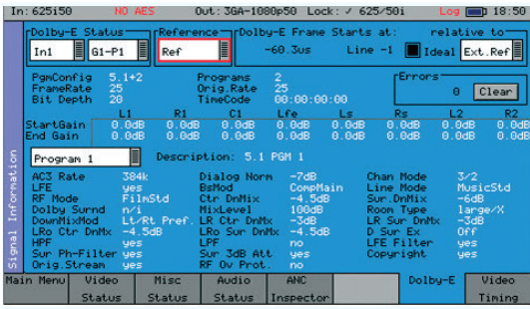
Order reference PHSXOZ



The **Advanced formats option** includes 4:2:2 YUV, 4:4:4 RGB and 4:4:4 YUV at 10/12 bit and 3G level A and B and is available for the SxA and SxE only. This option supports the new SDI practice for HD and 3G Level A and Level B signal transfer of 2K advanced formats including 4:2:2 Y'CbCr, 4:4:4 R'G'B' and 4:4:4 Y'CbCr at 10/12 bit as well as 4:4:4 X'Y'Z' at 12-bit.

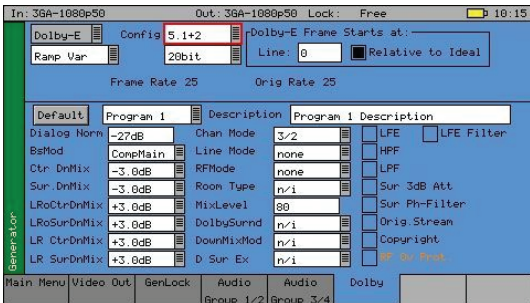
Note that SxD comes with these formats as standard.

Order reference PHSXOF



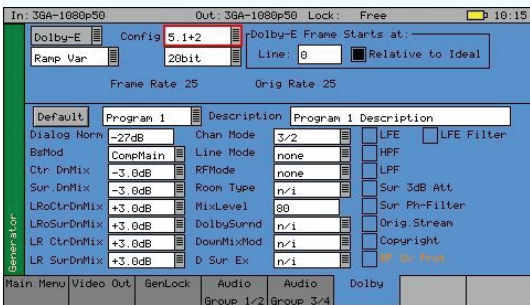
The Dolby bit-stream Analyzer option (PHSXOBD-A) displays Dolby E, Dolby Digital and Dolby Digital Plus metadata present in a selected audio stream and determines whether the Dolby E packet is timed correctly on the SDI video stream. The Dolby audio may be monitored from any of the SDI input embedded audio channel pairs or the AES input. Peak audio levels are also displayed for Dolby E.

Order reference PHSXOBD-A



The PHABRIX Sx Dolby bit-stream generator option (PHSXOBD-G) uniquely adds significant Dolby E, Dolby Digital and Dolby Digital Plus metadata generation features to the Sx range.

Order reference PHSXOBD-G



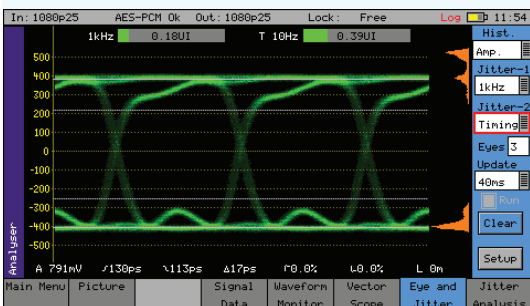
The Dolby generation + analysis option combines the functionality of these two option in a single purchasable option.

Order reference PHSXOBD-AG



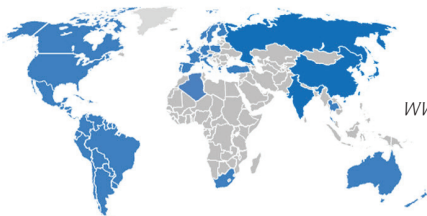
The Ancillary data status option provides a very quick status view of the ancillary data present in a SDI signal. It does not decode the data fully and is intended to be a fast analysis tool to show if a packet type is present, absent or red in fault. Full logging is available along with DID and SDID custom setup.

Order reference PHSXOVNC



The Advanced eye and jitter analysis option for the PHABRIX SxE instrument adds an additional jitter screen plus enhancements to the eye display. The extra features added to the eye and jitter module are focussed toward broadcast manufacturers who have a need for high end analysis tools. Histograms, decade filters, multiple eye display, full screen jitter display and alignment and timing thermometers are all available with comprehensive logging.

Order reference PHSXOEAE



www.phabrix.com/distributors.asp



PHABRIX® Limited
Omega House, Enterprise Way, Thatcham, Berkshire RG19 4AE
United Kingdom tel + 44 (0)1635 873030
email: info@phabrix.com www.phabrix.com



Made in the UK

PHABRIX is a registered trademark.