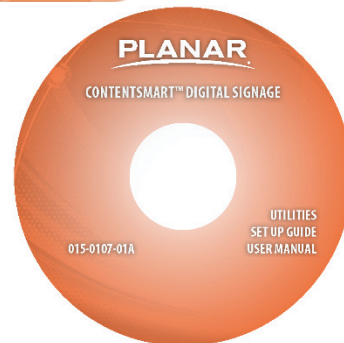


# ContentSmart 3.0 Software User Manual

---



**Touchboards**

205 Westwood Ave, Long Branch, NJ 07740  
Phone: 866-94 BOARDS (26273) / (732)-222-1511  
Fax: (732)-222-7088 | E-mail: [sales@touchboards.com](mailto:sales@touchboards.com)

**PLANAR.**  
A LEYARD Company

Copyright © 01/01/2017 by Planar Systems, Inc. All rights reserved.

Contents of this publication may not be reproduced in any form without permission of Planar Systems, Inc.

#### Trademark Credits

Windows™ is a trademark of Microsoft Corp.

All other companies are trademarks or registered trademarks of their respective companies.

#### Disclaimer

The information contained in this document is subject to change without notice. Planar Systems, Inc. makes no warranty of any kind with regard to this material. While every precaution has been taken in the preparation of this manual, the Company shall not be liable for errors or omissions contained herein or for incidental or consequential damages in connection with the furnishing, performance, or use of this material.

#### Warranty and Service Plans

Planar warranty and service plans will help you maximize your investment by providing great support, display uptime, and performance optimization. From post-sale technical support to a full suite of depot services, our services are performed by trained Planar employees. When you purchase a Planar product, you get more than a display, you get the service and support you need to maximize your investment. To find the latest warranty and service information regarding your Planar product, please visit <http://www.planar.com/support>

Part Number: 020-1190-01C

# Contents

1	Overview.....	4
1.1	Feature Highlights.....	4
1.2	Planar ContentSmart Overview.....	5
2	Installation.....	6
2.1	Minimum System Requirements .....	6
2.2	Setup Process .....	6
3	UI Overview.....	7
3.1	Main Menu.....	7
3.2	Renaming a Player.....	8
3.3	Template List .....	9
3.4	Presentation Editor .....	10
3.5	Schedule Editor .....	11
3.6	Event Editor.....	12
3.7	User Operation Flow.....	13
3.8	Edit Playlist .....	14
3.8.1	Create playlist.....	14
3.8.2	Edit from existing playlist.....	15
3.8.3	Duplicate existing playlist.....	15
3.9	Edit Presentation.....	16
3.9.1	Add looping playback media items by drag and drop.....	16
3.9.2	Add looping playback media items .....	17
3.9.3	Media item configuration .....	18
3.9.4	Edit image .....	19
3.9.5	Edit video.....	19
3.9.6	Edit Microsoft PowerPoint file.....	21
3.9.7	Edit Logo.....	22
3.9.8	Edit Widget .....	23

3.9.9	Edit AV-input.....	24
3.9.10	Adding a Ticker .....	24
3.9.11	Edit text .....	26
3.9.12	Switch theme and Toggle logo display.....	28
3.9.13	Adding background music.....	28
3.9.14	Switch between presentations .....	29
3.10	Edit Schedule.....	29
3.10.1	Add an event schedule .....	30
3.10.2	Edit recurrence type.....	31
3.10.3	Schedule priority .....	32
3.10.4	Add presentations to an event .....	33
3.10.5	Duplicate a presentation to an event.....	34
3.10.6	Duplicate an event.....	34
3.10.7	Adding trigger event .....	35
3.10.8	Send power on and standby RS-232 command to display.....	35
3.11	Export Playlist.....	36
3.11.1	Export playlist via USB.....	36
3.11.3	Export playlist via Network.....	37
3.11.4	Player association.....	38
3.12	Save / Load Playlist.....	38
3.12.1	Save playlist(s) .....	38
3.12.2	Load playlist(s).....	40
4	Customer Support .....	41
4.1	Software and Firmware Updates .....	41
4.2	Troubleshooting.....	41

4.2.1	Can Planar ContentSmart Media Player hardware be configured through the software? .....	41
4.2.2	Can News, RSS widgets be played in areas other than the ticker zone? ...	41
4.2.3	Player Mode Settings.....	41
4.2.5	Microsoft PowerPoint Slideshow Feature Availability.....	42
4.2.6	JPEG image compatibility notice .....	42
4.2.7	“Please Wait” message shows up often and takes long time to go away.	42
4.4	Planar Support .....	43
4.4.1	Cables and Accessories .....	43
4.4.2	Technical Support.....	43

# 1 Overview

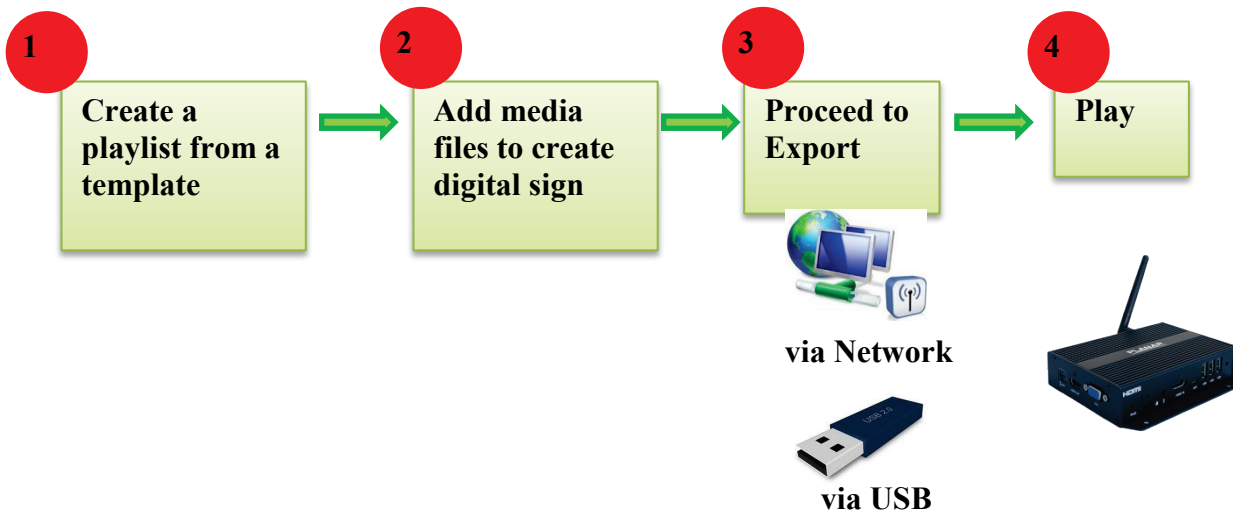
Welcome to ContentSmart™ Software for the Planar® ContentSmart™ Media Player, an easy-to-use application that allows you to create digital signage content using existing assets (video, images, Microsoft PowerPoint, music). Using the standard or pre-designed templates, simply enter content into each zone within the template, and then export the playlist to the Planar ContentSmart Media Player. With its built-in, easy-to-use scheduling capabilities, ContentSmart will help you deliver the right message to the right audience at the right time.

## 1.1 Feature Highlights

- Standard templates for designing content
  - Portrait or landscape orientation
  - UHD (3840 x 2160) and Full HD (1920 x 1080) resolution
- Pre-designed templates
  - Hospitality
  - Retail
  - Quick Service Restaurant
- Publish Microsoft PowerPoint slides directly onto the media player
  - Requires Microsoft PowerPoint 2003/2007/2010/2013.
    - Please note: Each slide in the deck will play as a static image only, regardless of whether animations or transitions are built into each slide. If you want to preserve the Microsoft PowerPoint animations and transitions, save the PPT as a video file format.
- Easy setup for multi-zone layout
- Image fit, crop and stretch options
- Supports video input sequence in playlist scheduling

- Supports repeat looping, weekly, monthly or special event scheduling
- Schedule display on/off
- Auto detect player's IP, MAC address
- Supports H.264, MPEG 1/2/4 ASP & AVC scheduling
- Supports H.265 codec (4K content only)

## 1.2 Planar ContentSmart Overview



## 2 Installation

### 2.1 Minimum System Requirements

Windows Vista, 7, 8 & 10 Operating System	1.0 GHz AMD or Intel CPU
.NET Framework 4	1GB of system memory
(optional) Microsoft PowerPoint 2003/2007/2010/2013/2016	20 GB hard drive space

### 2.2 Setup Process

Run the installer and follow the step-by-step instructions. Close the installer to finish installation.

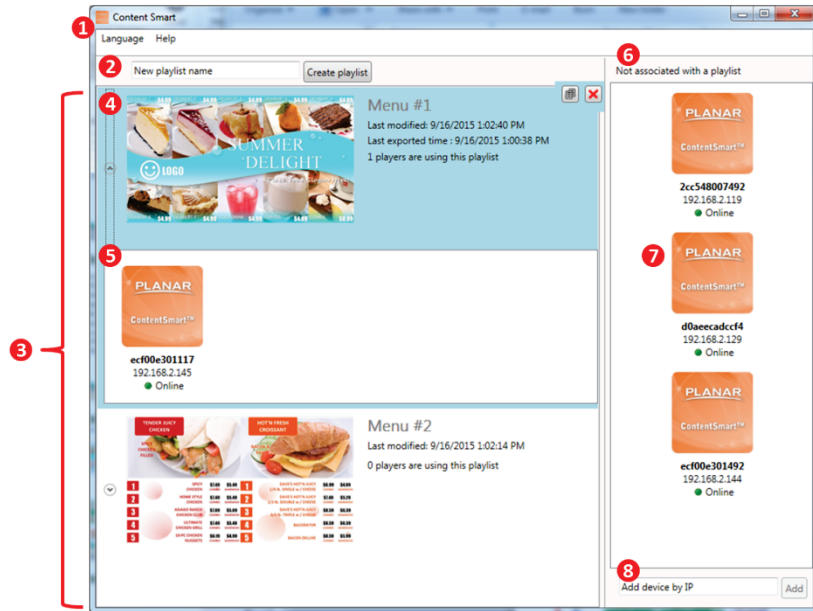




## 3 UI Overview

### 3.1 Main Menu

The main menu is composed of a list of existing playlists and a list of players available for playlist assignment.



The screenshot shows the ContentSmart main menu interface. It features a top toolbar with a language option and help information. Below the toolbar is a form for creating a new playlist, including a name field and a 'Create playlist' button. The main area displays two playlists: 'Menu #1' and 'Menu #2'. 'Menu #1' is associated with one player, while 'Menu #2' is not. A list of existing playlists is shown on the right side, with each entry displaying the playlist name, IP address, and status. A red bracket on the left side of the interface groups the playlist list and the associated players. A legend on the right side explains the numbered callouts: 1. Tool bar; 2. Playlist name field and Playlist create button; 3. List of existing Playlists; 4. Playlist preview and info; 5. The associated players of the playlist; 6. Not yet associated player list; 7. Player name, IP, status; 8. Player IP field and player add button.

- 1 Tool bar
  - Language option
  - Help information
- 2 Playlist name field and Playlist create button
- 3 List of existing Playlists
- 4 Playlist preview and info
- 5 The associated players of the playlist
- 6 Not yet associated player list
- 7 Player name, IP, status
- 8 Player IP field and player add button

Drag players into/out of a playlist to make it associated/unassociated with the playlist. Double-click a playlist to edit it.

When you mouse over a playlist, an "X" button will appear. Click the "X" to delete the playlist.

A maximum of 50 players can be associated with a playlist.

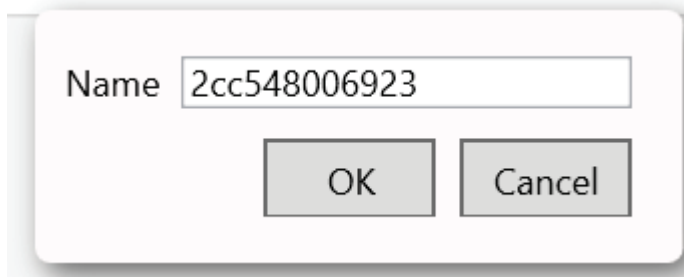
## 3.2 Renaming a Player

The default name of a player is the LAN MAC address. To rename a player, highlight the player until you see a pen symbol and "Rename" appear:

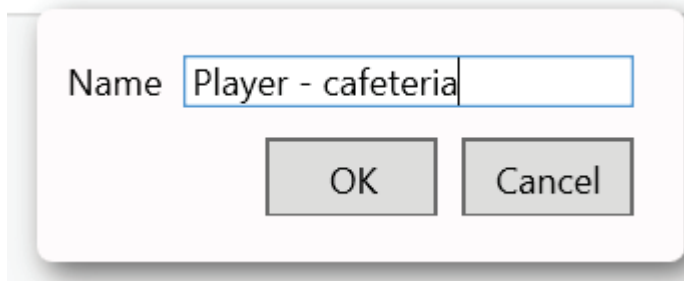


Click "Rename".

After you click "Rename", the following box will appear:

A screenshot of a dialog box for renaming a player. The 'Name' field contains '2cc548006923'. There are 'OK' and 'Cancel' buttons.

Enter in the new name:

A screenshot of a dialog box for renaming a player. The 'Name' field contains 'Player - cafeteria'. There are 'OK' and 'Cancel' buttons.

Click "OK".

The new name will now appear on the player icon:



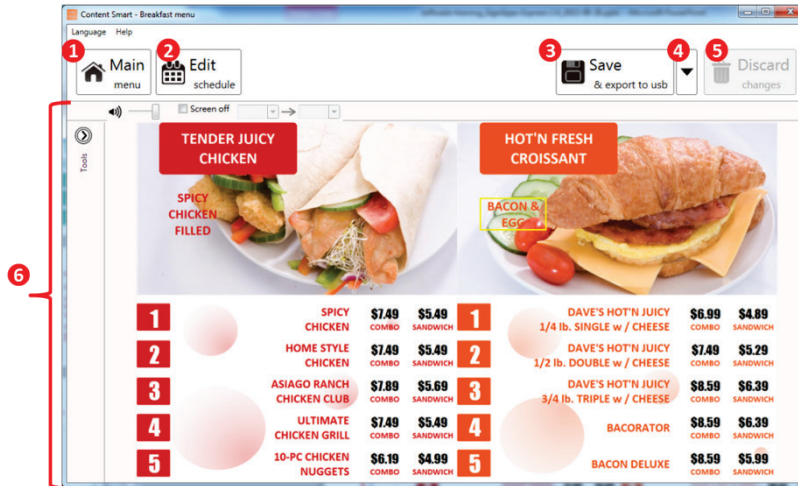
### 3.3 Template List

Template list contains all the presentation templates.

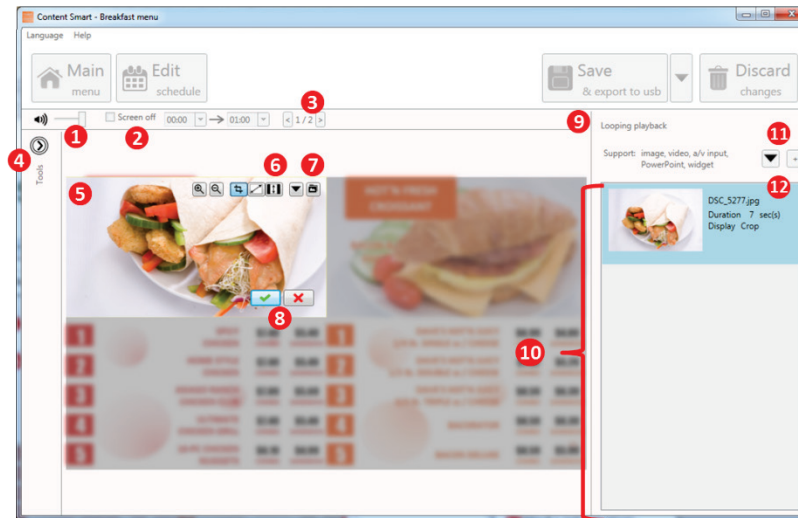
### 3.4 Presentation Editor

Presentation editor allows you to edit all the media content – i.e., text, images, videos and widgets – in a presentation.

It also allows you to save the playlist, export the playlist, or enter the schedule editor if you need to schedule the playback.



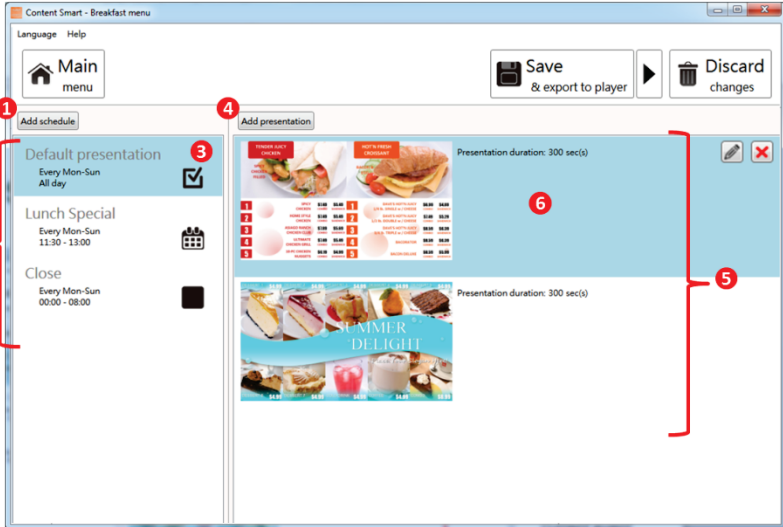
- 1 Back to Main menu
- 2 Edit Playlist Schedule
- 3 Save and export
- 4 Select export target (player or USB)
- 5 Discard all changes
- 6 Editing zone



- 1 Volume control
- 2 Screen off control
- 3 Switch presentations
- 4 Expand/Hide tool menu
- 5 Editing zone
- 6 Zoom or Fit options
- 7 Change content
- 8 Confirm/Cancel change
- 9 Expand/Hide media list
- 10 Media list for this zone
- 11 Add more media files
- 12 Media information
  - Thumbnail
  - File name
  - Options

## 3.5 Schedule Editor

The Schedule Editor helps you create a flexible playlist containing multiple presentations that will automatically play according to pre-defined events (time slots). You can add up to 50 event schedules and up to 50 presentations in a presentation loop.

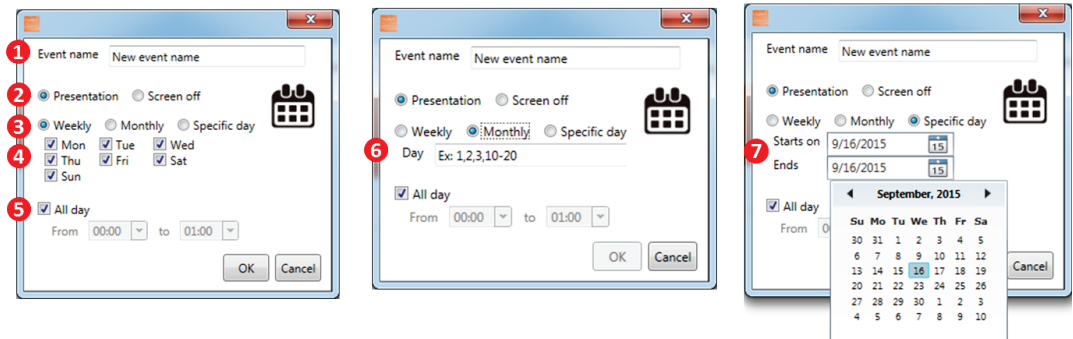


The screenshot shows the 'Content Smart - Breakfast menu' interface. It features a 'Main menu' button, 'Save & export to player' and 'Discard changes' buttons, and an 'Add schedule' button. The main area is divided into two panes: 'Add presentation' and 'Add event schedule'. The 'Add presentation' pane shows a list of presentations with thumbnails and durations. The 'Add event schedule' pane shows a list of event schedules with time slots and event types. Red callouts 1 through 6 point to specific elements in the interface.

- 1 Add event schedule
- 2 Existing events
- 3 Event information
  - Time slot
  - Event Day/Date
  - Event Type
- 4 Add new presentation to current event
- 5 Existing presentations in current event
- 6 Presentation thumbnail and duration

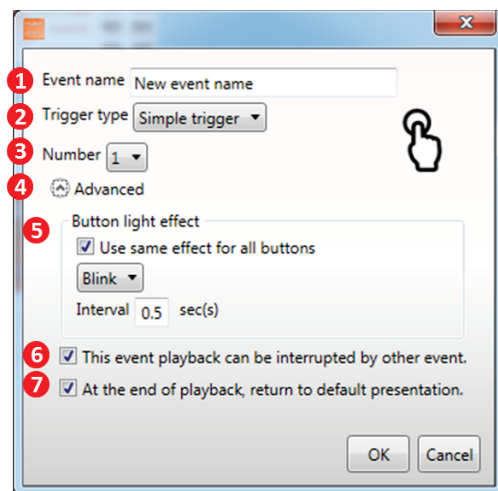
## 3.6 Event Editor

Event Editor lets you define how and when you want the event to take place.



- 1 Name of the event
- 2 Event type (available when add new event)
- 3 Recurrence type
- 4 Day picker for weekly event
- 5 Time slot
- 6 Day picker for monthly event
- 7 Day picker for specific day event

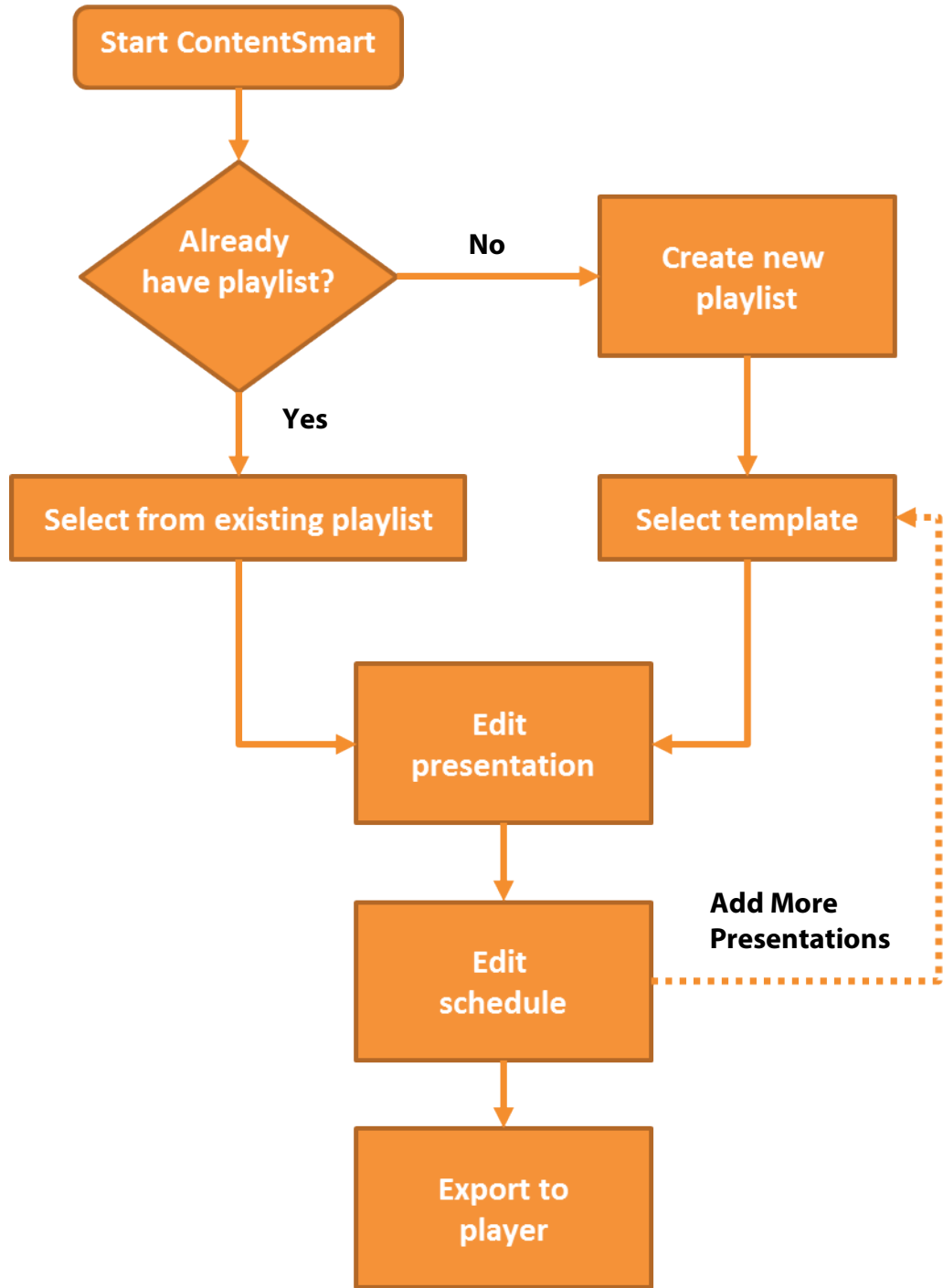
Trigger Event lets you add event triggers into the presentation. The trigger source can be a touch button event and a motion sensor event from a digital signboard or input events from a compatible GPIO board.



- 1 Name of the trigger event
- 2 Trigger type: simple trigger or motion sensor
- 3 Schedule up to 10 simple triggers
- 4 Advanced control for simple trigger
- 5 Advanced: control button light effect
- 6 Advanced: option to disable interrupt for the trigger
- 7 Advanced: option to disable loop back to default presentation



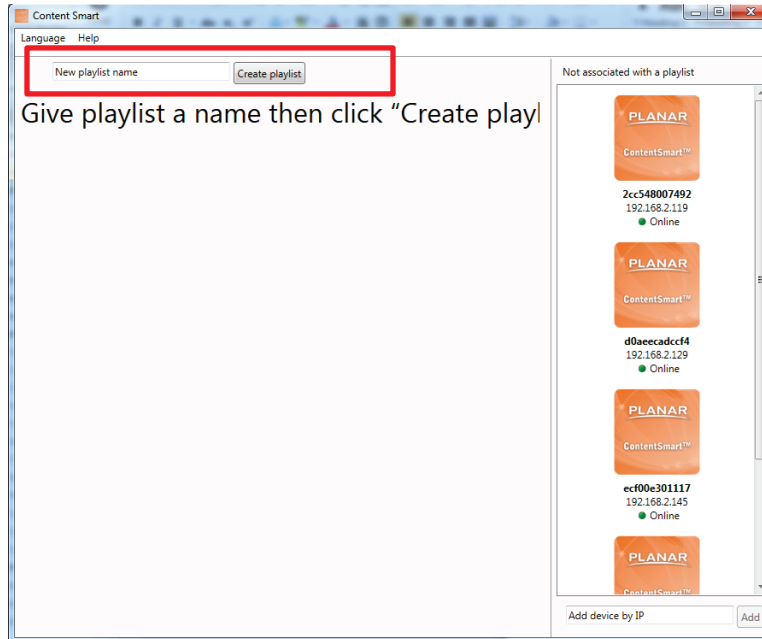
### 3.7 User Operation Flow



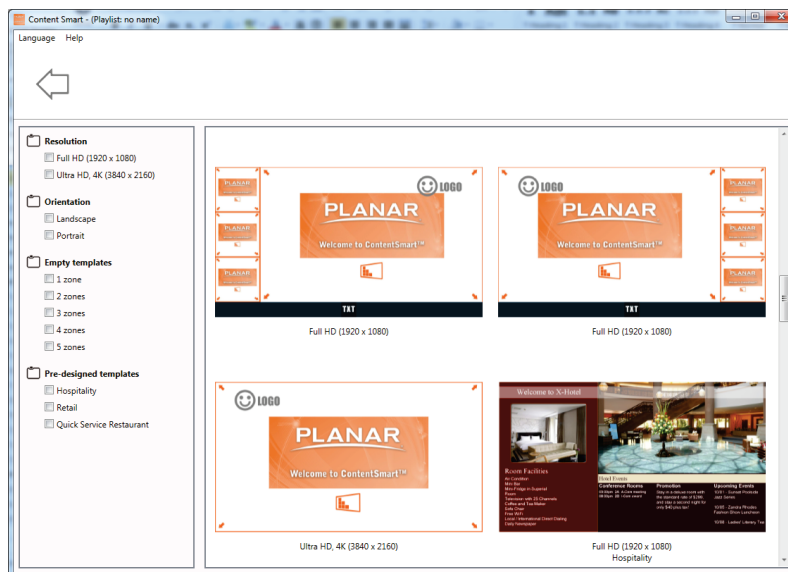
## 3.8 Edit Playlist

### 3.8.1 Create playlist

- 1 Input a playlist name (optional) and then click "Create playlist".



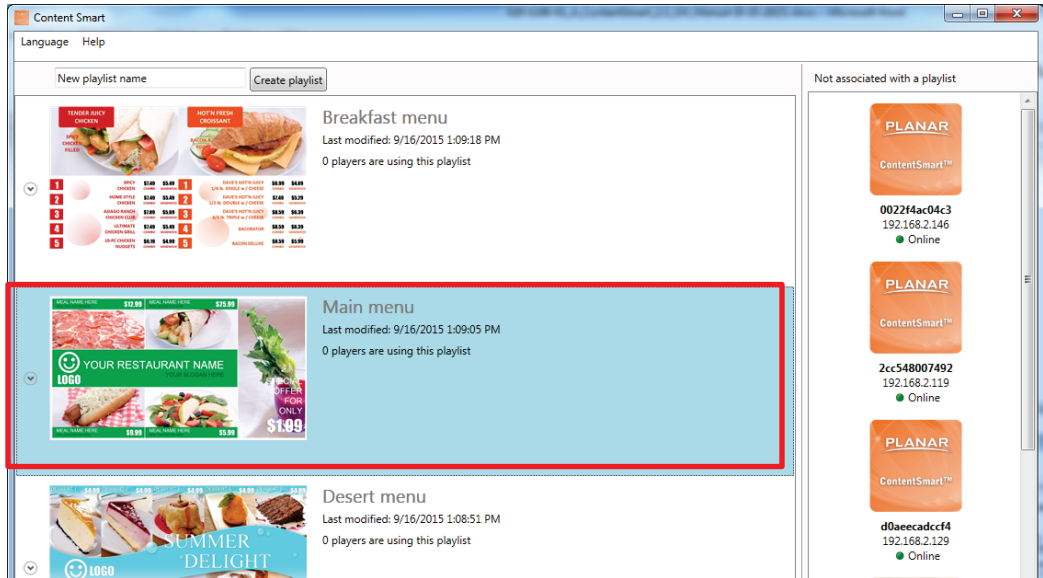
- 2 Double-click a template to make your selection.





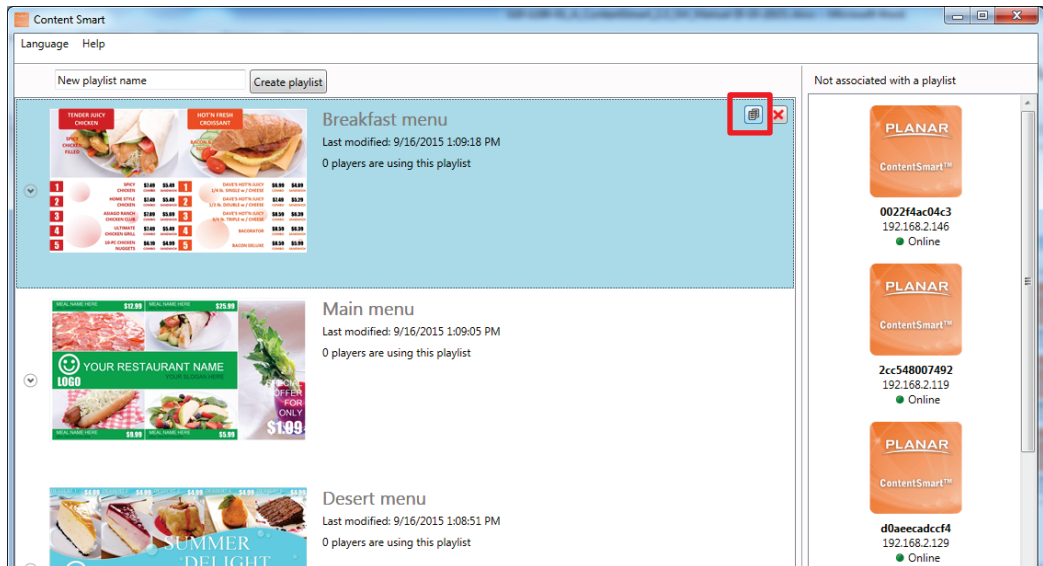
### 3.8.2 Edit from existing playlist

Double-click on an existing playlist to edit it.



### 3.8.3 Duplicate existing playlist

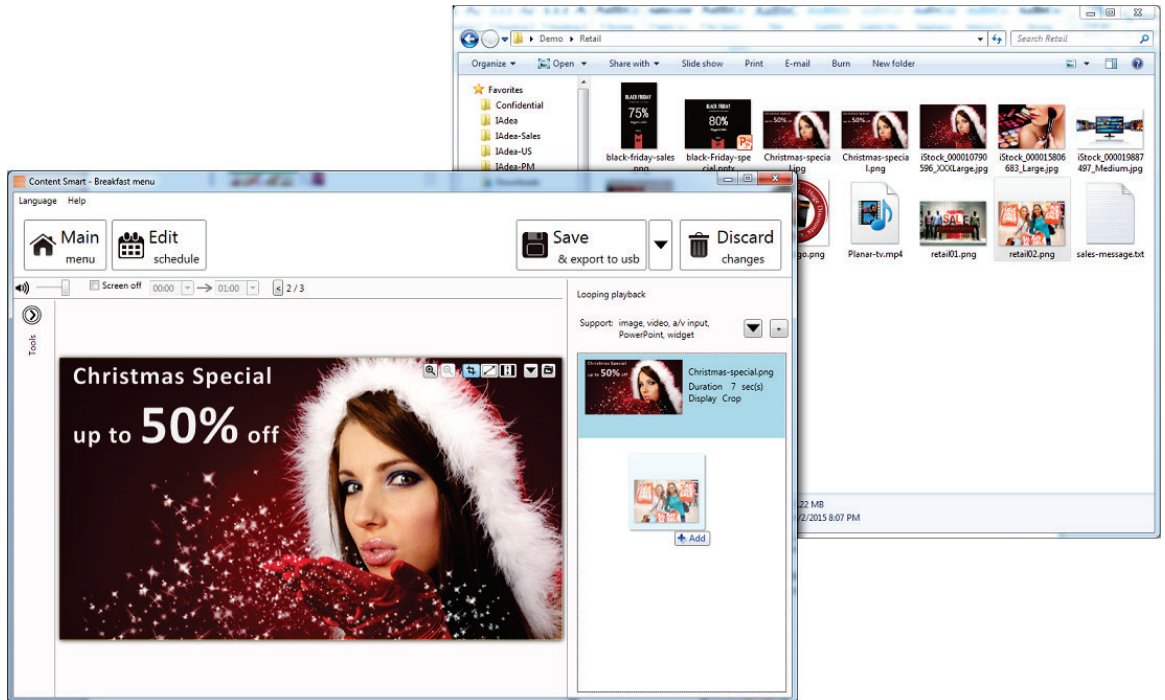
Click on the Duplicate button of an existing playlist to copy the playlist.



## 3.9 Edit Presentation

### 3.9.1 Add looping playback media items by drag and drop

Simply drag and drop media from file explorer to the zone. Dropping to the editing area will replace the image, while dropping to the looping playlist will add it to the playback list.



# Touchboards

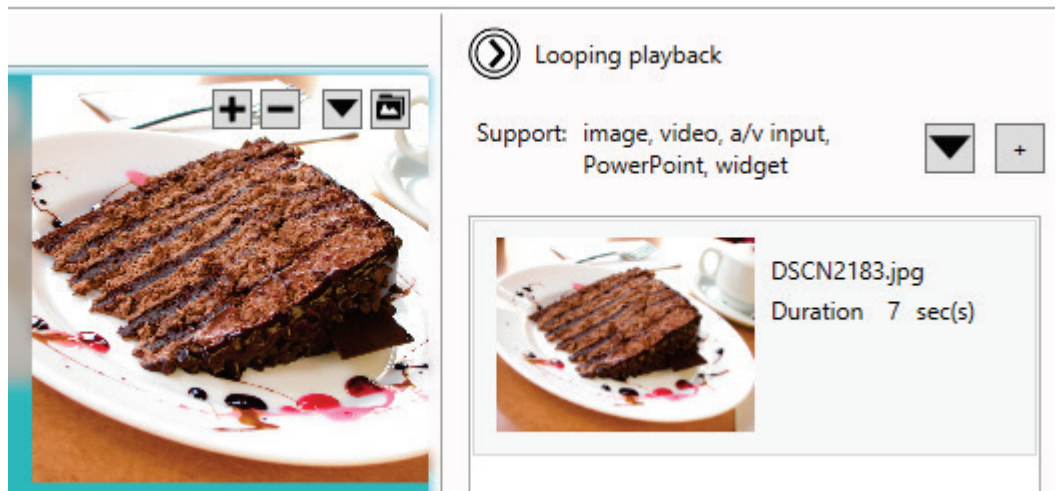
205 Westwood Ave, Long Branch, NJ 07740  
Phone: 866-94 BOARDS (26273) / (732)-222-1511  
Fax: (732)-222-7088 | E-mail: sales@touchboards.com


### 3.9.2 Add looping playback media items


- 1 Select a region, and then expand the Looping playback option panel.




- 2 Add a new image/video/Microsoft PowerPoint/widget and edit its options.



Click  to add more media to the region.

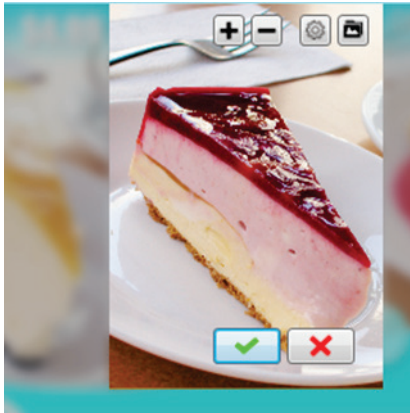
Click  to add special media to the region:

Widget 

A/V input 

### 3.9.3 Media item configuration

- 1 Focus/Zoom (image only) and Fit options can be configured from the editing zone directly.

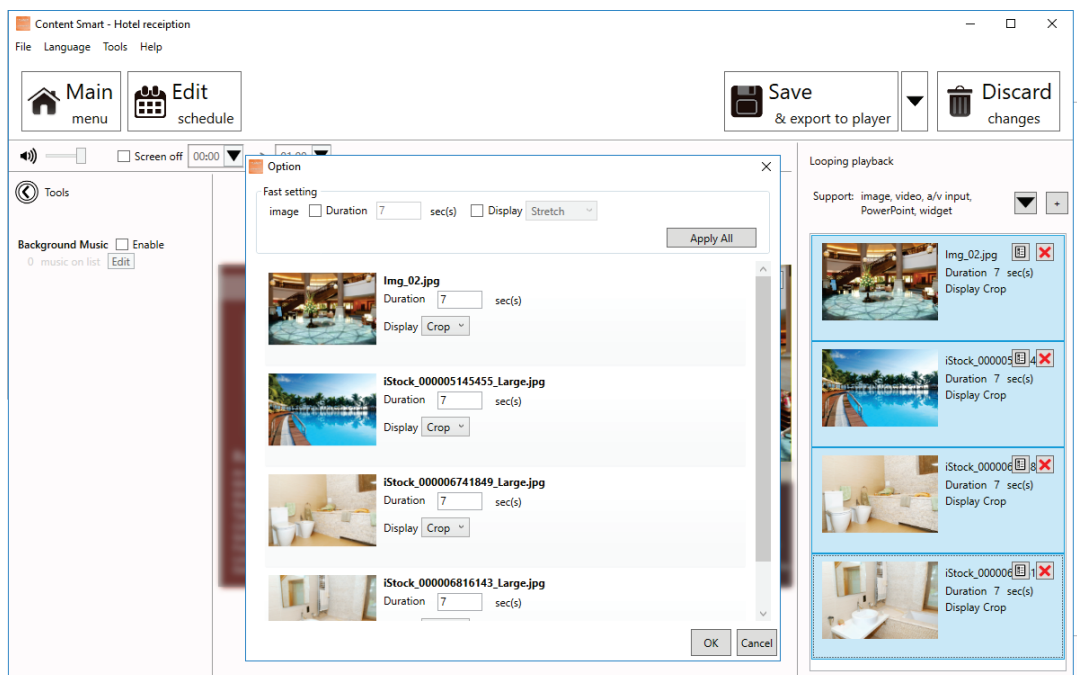


- 2 Playback duration and other options can be configured from the Option dialog. To launch the Option dialog:

- Double-click on a media item.
- Right-click and select "Option.."

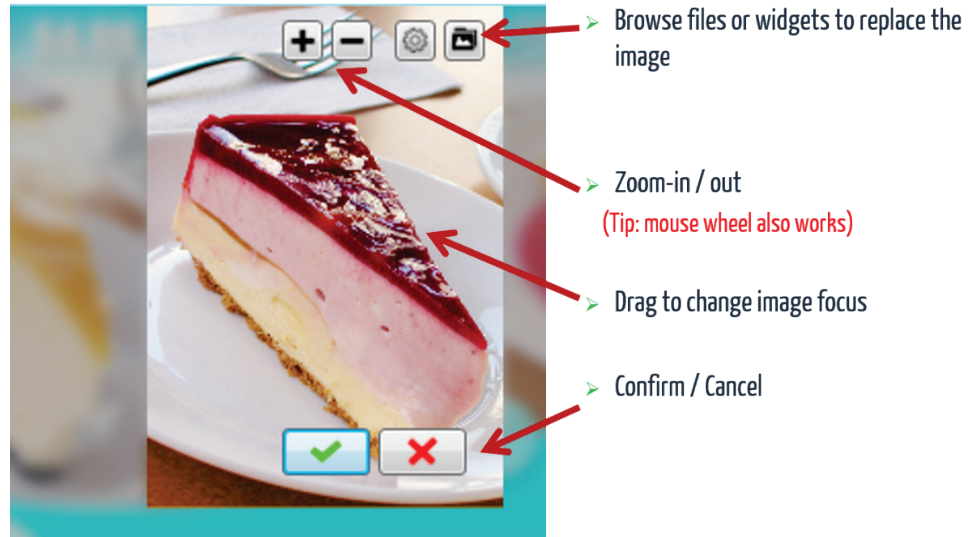
**Note:**

To select multiple items, click the first item, press and hold down the Ctrl key, and then click the next item. Common settings will be listed on top for fast configuration.



### 3.9.4 Edit image

- 1 Add an image file to a region and click on the item in the looping playback media list to start editing.
- 2 You can replace the image, zoom-in/out and adjust the focus. Click confirm when you are done.



Configurable options	Options
Duration	Playback duration (seconds)

### 3.9.5 Edit video

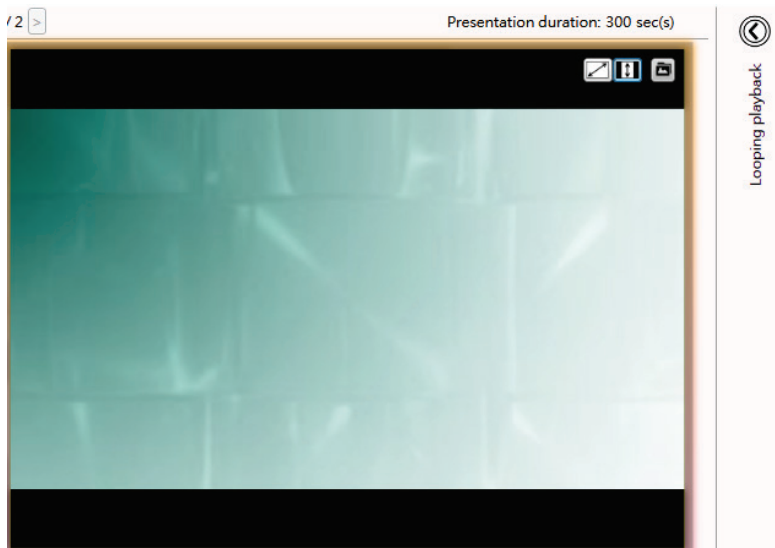
Note:

Double-click the video to preview the playback in a Windows application.

- 1 Add video files to a region and click on the item to start editing.
- 2 Choose to fit inside the region or stretch video to the region.

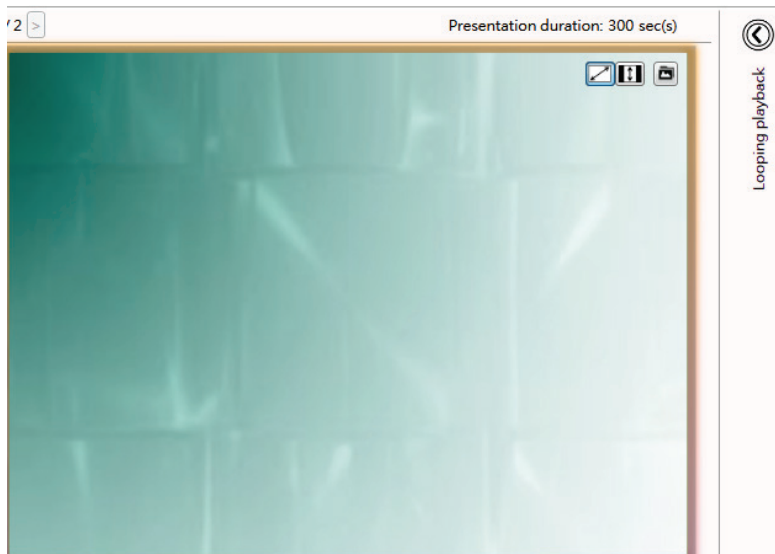


: Fit inside



**Note:**

*Only ONE zone is allowed to contain video files in a presentation*



Configurable options	Options
Display	Fit/Stretch

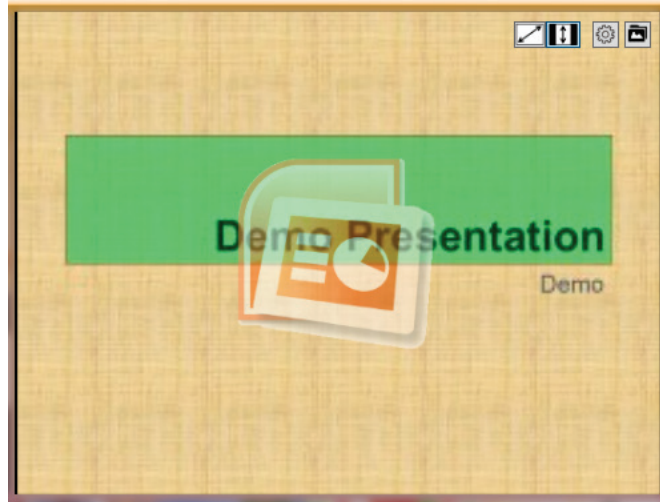
Double-click the file to edit in Microsoft PowerPoint.

Note:

Export Microsoft PowerPoint slides (in static only) if you have Microsoft PowerPoint 2003/2007/2010/2013 installed on the same computer

### 3.9.6 Edit Microsoft PowerPoint file

- 1 Add a Microsoft PowerPoint file to a region and click on the item to start editing.



- 2 Choose to fit inside the region or stretch Microsoft PowerPoint to the region:



: Fit inside

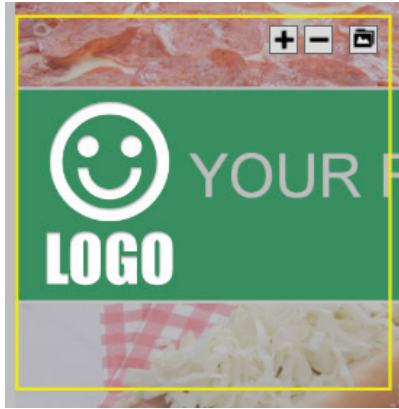


: Stretch

Configurable options	Options
Display	Fit/Stretch
Unspecified slide duration	Playback duration for each slide (seconds)

### 3.9.7 Edit Logo

- Note:
- LOGO zone does not support looping playback.
- 1 Click on the "LOGO" icon to edit the logo (logos only supported in limited templates).



- 2 You can replace the image, zoom-in/out and adjust the focus. Click confirm when you are done.

Configurable options	Options
N/A	



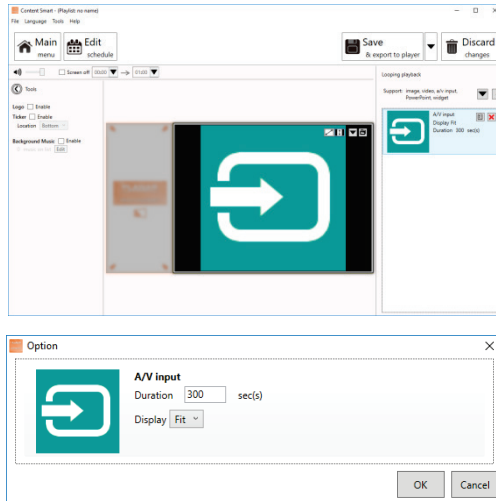
### 3.9.8 Edit Widget

- 1 Add widget files to a region and click on the item to start editing.



<b>Configurable Options:</b>	<b>Options:</b>
Common	Playback duration : seconds
Options	Color: background color foreColor: text color
Clock	timeFormat : 12h/24h
Calendar	timeFormat : 12h/24h Align: right/center/left
Weather	Cities: type city name listed in - <a href="http://www.worldweatheronline.com/country.aspx">http://www.worldweatheronline.com/country.aspx</a> Key : worldweather online API Key
RSS	Urls: RSS URL Writing direction:Right to Left/Left to Right
Webpage	URL: website URL

### 3.9.9 Edit AV-input



A/V-input is a special media that works on the devices with video and audio input such as composite input or HDMI input.

Adding A/V-input media item will playback from video/audio source. The default duration of playback is 300 sec (e.g. 5 min). Double-click the duration to edit the time from pop-up configuration menu.

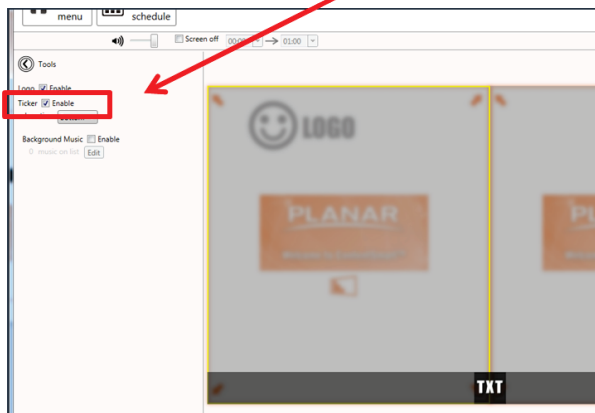
### 3.9.10 Adding a Ticker



Choose any of the empty templates to use ticker

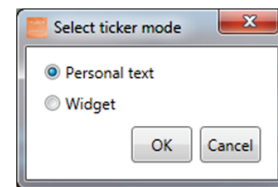


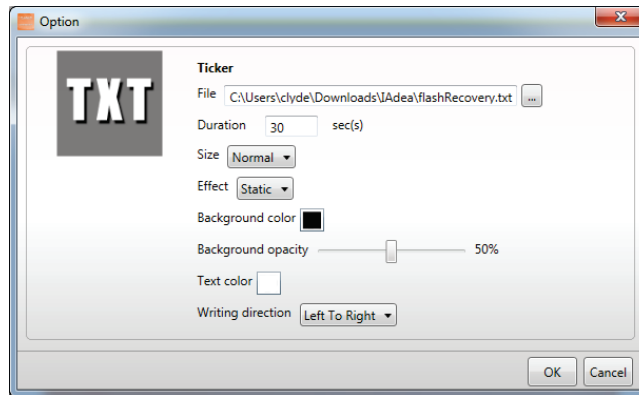
In the Tools panel, check Ticker to enable it (if the ticker is fixed on layout, you will not able to disable it)



Select a preferred ticker mode from one of the options:

- Personal text: to display text content from a .txt file
- Widget: to display a widget in the ticker zone (ex. RSS widget or custom widgets)

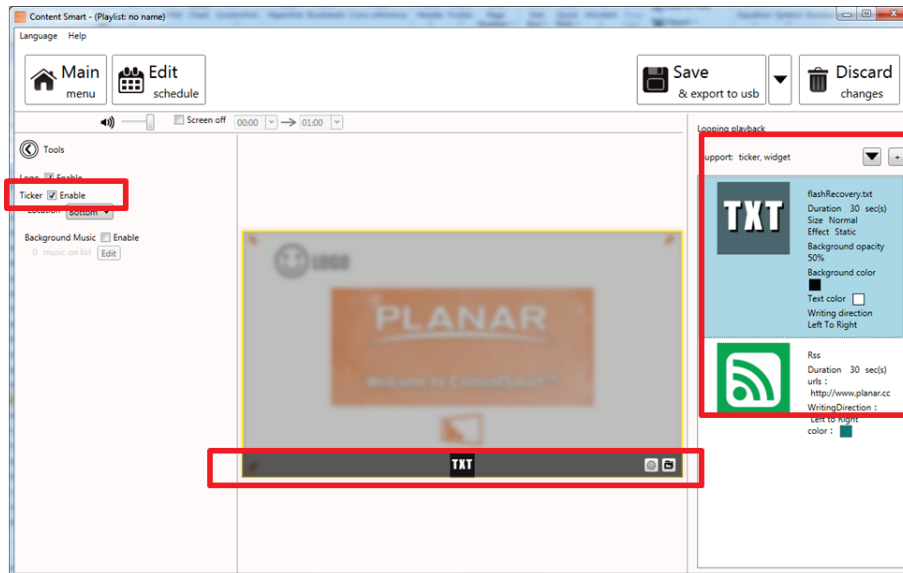




Configurable Options:	Options:
File	Path to the .txt file
Duration	Playback duration in seconds
Size	The text size of the ticker Available options: small/normal/large
Effect	Transition effect of the ticker Available options: Static: no transition effect between lines Crawl: ticker crawls from right to left Scroll: ticker scrolls up
Background color	Select ticker zone background color from color palette
Background opacity	Level of transparency of the ticker background
Text color	Select text color from color palette

After enabling the ticker, you can:

- 1 Change the location of the ticker to Bottom or Top.
- 2 Add more .txt files or widgets to the zone.

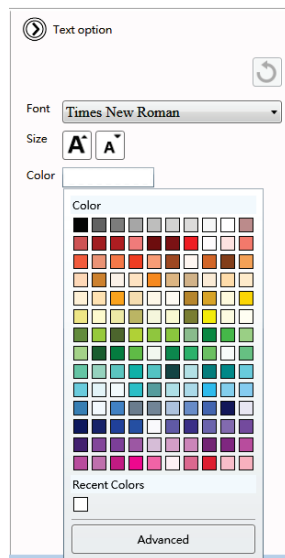


### 3.9.11 Edit text

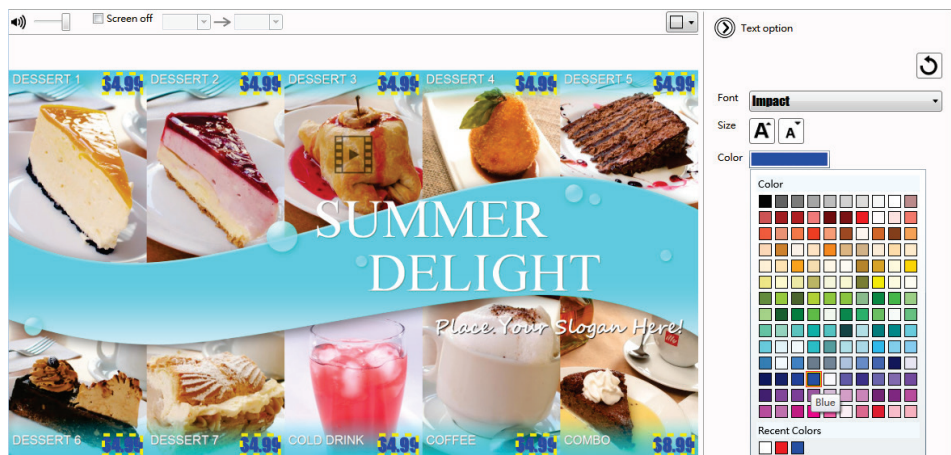
- 1 Editable text will get highlighted with a yellow box when hovering on it. Click the text to start editing.



- Expand option to change font type, size and color.

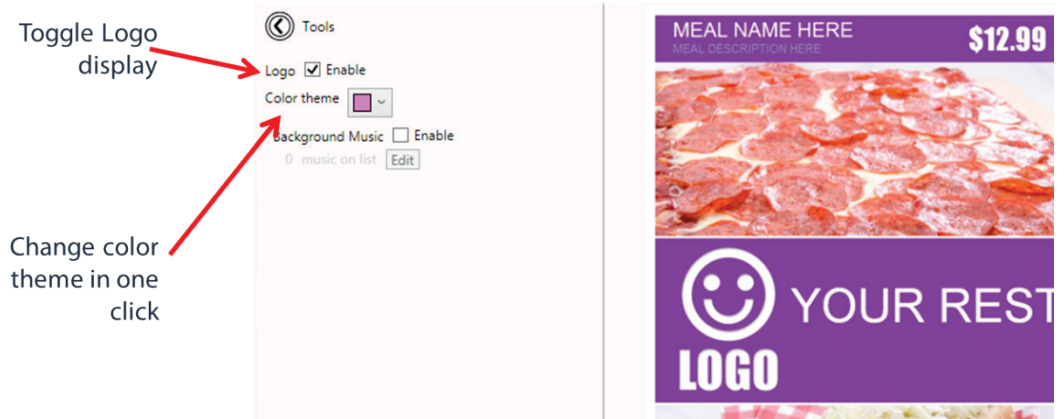


- If the text belongs to a text group, changing its style will affect all text in the same group.



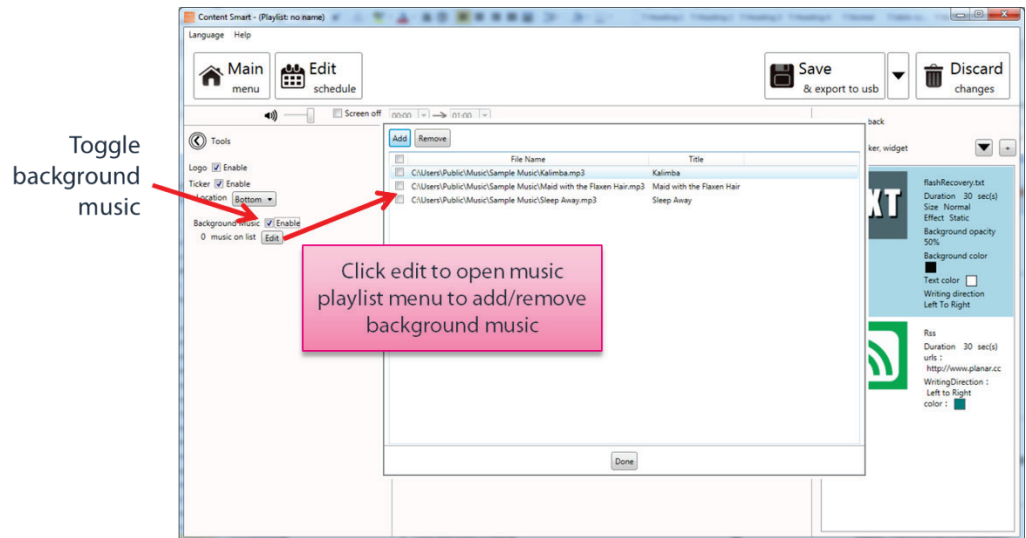
### 3.9.12 Switch theme and Toggle logo display

Expand Tools panel to toggle logo display and choose a different color theme



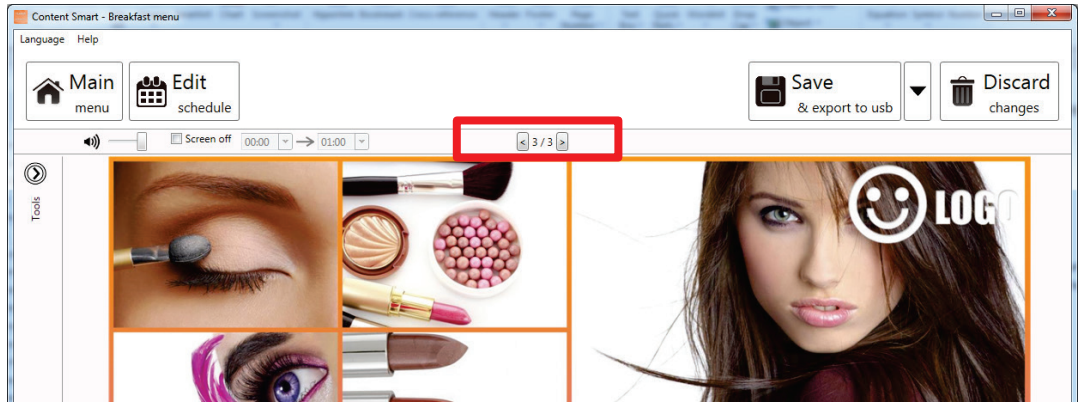
### 3.9.13 Adding background music

Background music only works with images or Microsoft PowerPoint presentations. If a presentation contains video, an information message will show up, asking you to remove the video from presentation before adding background music.



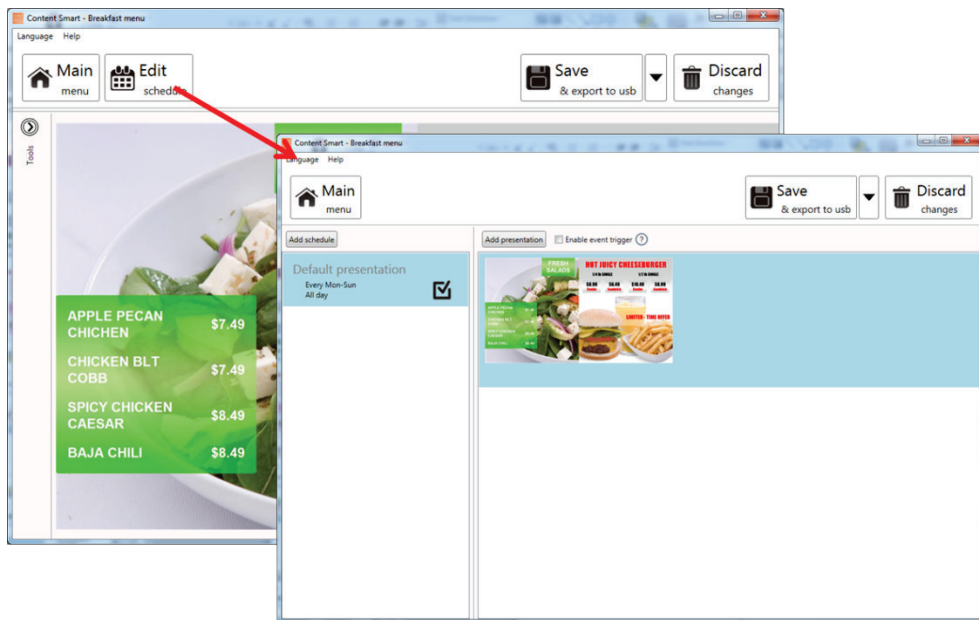
### 3.9.14 Switch between presentations

If more than one presentation exists in same event schedule, switching between presentations can be done by the switch as shown below.

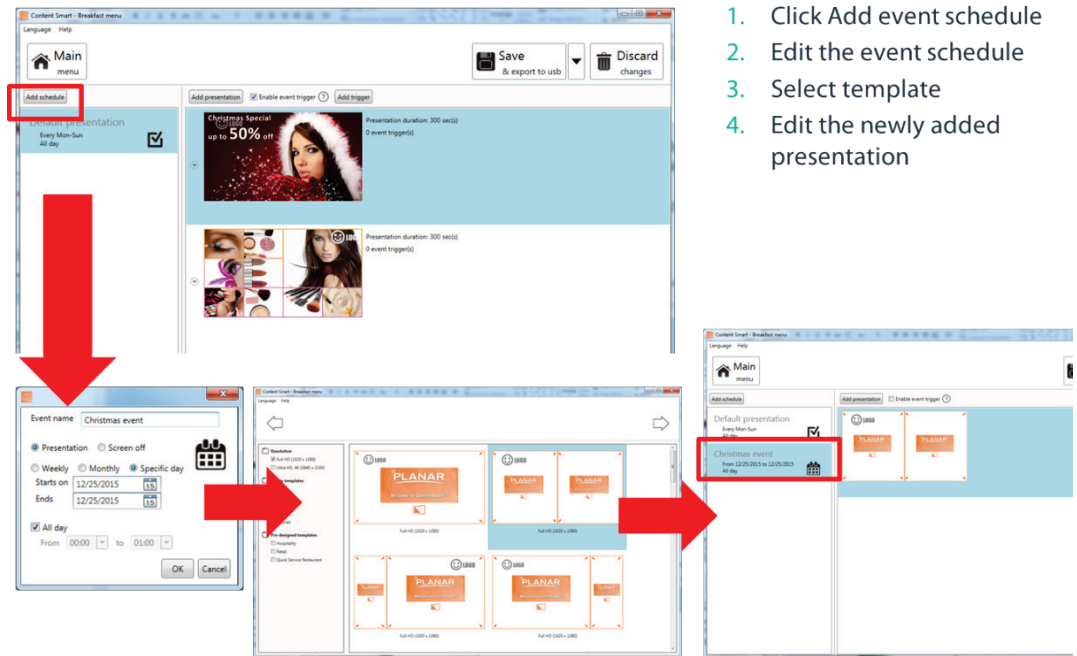


## 3.10 Edit Schedule

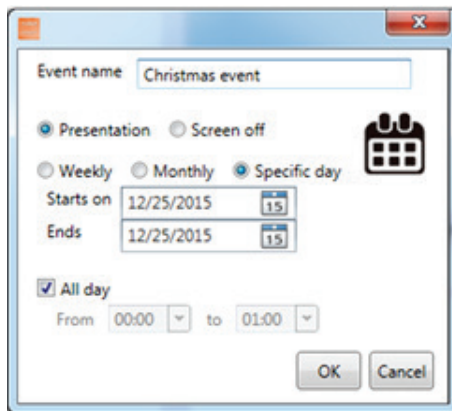
Click Edit schedule to enter schedule editor.



### 3.10.1 Add an event schedule



1. Click Add event schedule
2. Edit the event schedule
3. Select template
4. Edit the newly added presentation

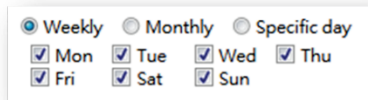


1. Specify event name
2. Choose an event type ( available only when adding an event)
  - Presentation
  - Screen off
3. Select recurrence type and the day
4. Select the playback period
  - All day
  - Specific time slot

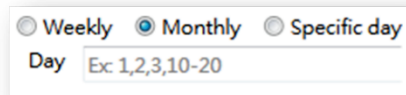


### 3.10.2 Edit recurrence type

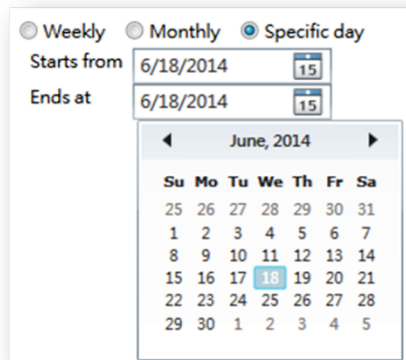
Specific day(s) event has the highest priority, Monthly the second priority and Weekly the lowest priority when schedules are overlapping.



Weekly  Monthly  Specific day  
 Mon  Tue  Wed  Thu  
 Fri  Sat  Sun



Weekly  Monthly  Specific day  
Day



Weekly  Monthly  Specific day  
Starts from    
Ends at    
June, 2014  
Su Mo Tu We Th Fr Sa  
25 26 27 28 29 30 31  
1 2 3 4 5 6 7  
8 9 10 11 12 13 14  
15 16 17 18 19 20 21  
22 23 24 25 26 27 28  
29 30 1 2 3 4 5

#### ➤ Weekly

- Check/uncheck the weekdays

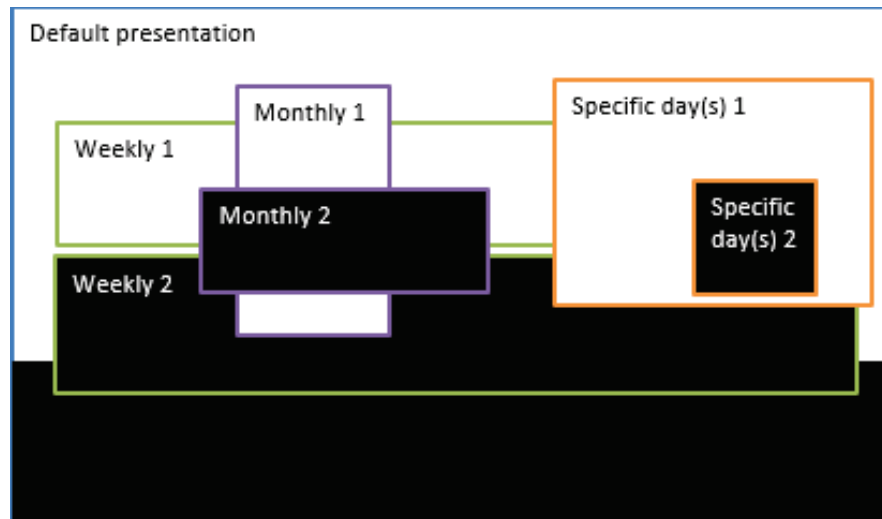
#### ➤ Monthly

- Enter days separated by comma ,
- Or period connected by dash -
- Ex: 1,5,9,15-18 will play on 1<sup>st</sup>, 5<sup>th</sup>, 9<sup>th</sup>, 15<sup>th</sup>, 16<sup>th</sup>, 17<sup>th</sup>, 18<sup>th</sup> of each month

#### ➤ Specific day

- Pick start day and end day from the calendars

### 3.10.3 Schedule priority



- Default presentation is the initial schedule that is defaulted to play 24x7. It has the lowest priority and will be surpassed whenever there are overlapping schedules.
- As shown on the diagram above, specific day(s) event has the highest priority of playback when schedules are overlapping, Monthly schedule has the second highest priority, followed by weekly schedule.
- Among the same recurrence type, a newly added schedule takes higher priority (e.g. Weekly 2 is the newly added schedule).

#### Default presentation

Every Mon-Sun  
All day



#### Weekly 1

Every Mon-Sun  
00:00 - 18:00

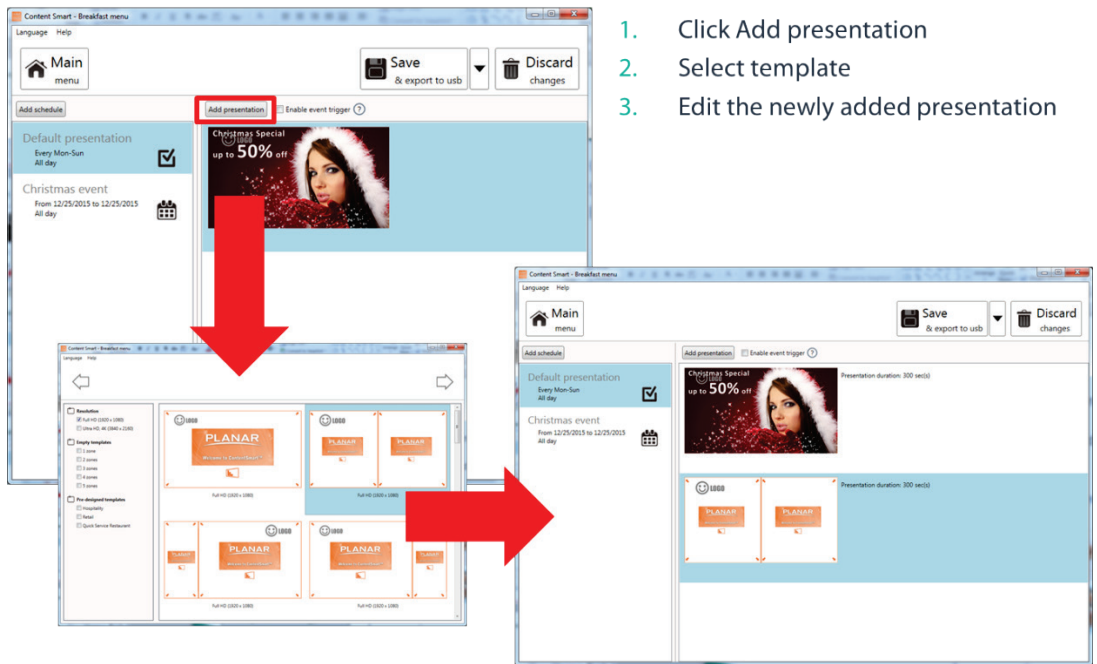


#### Weekly 2

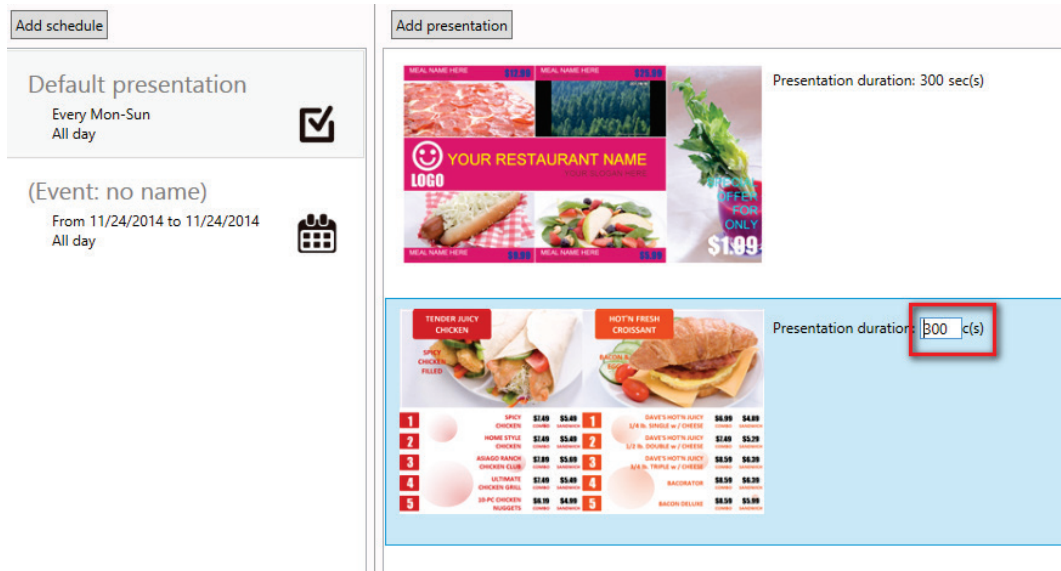
Every Mon-Sun  
00:00 - 18:00



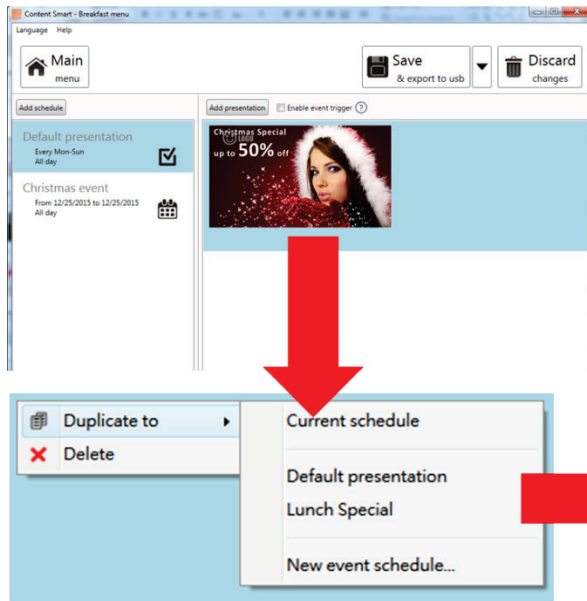
### 3.10.4 Add presentations to an event



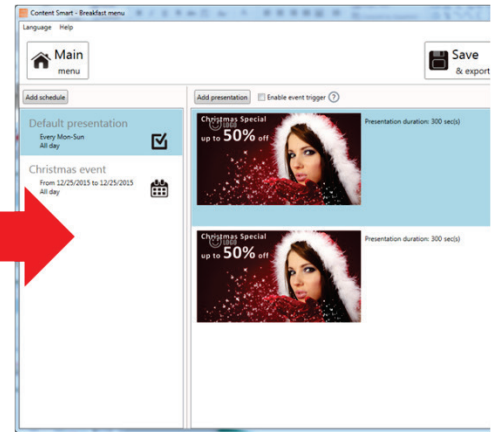
When a looping presentation has more than one presentation, the duration box will appear. Click on the Presentation duration number to change duration. The default duration is 300 seconds.



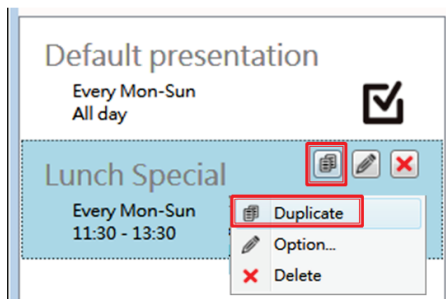
### 3.10.5 Duplicate a presentation to an event



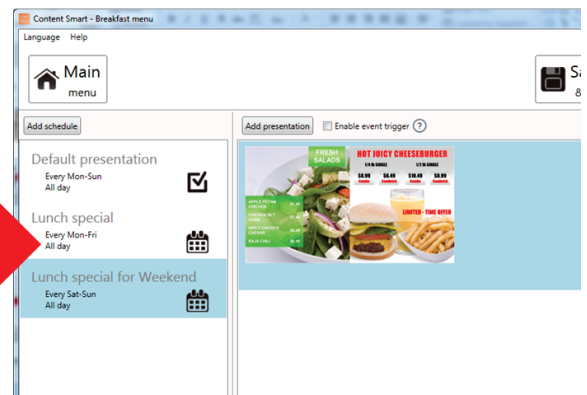
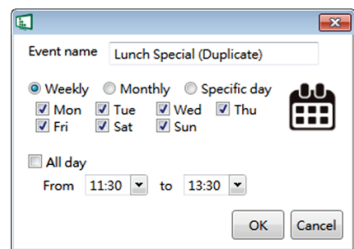
1. Right click a presentation and select "Duplicate to"
2. Select a destination:
  - o Current schedule
  - o An existing schedule
  - o New event schedule



### 3.10.6 Duplicate an event

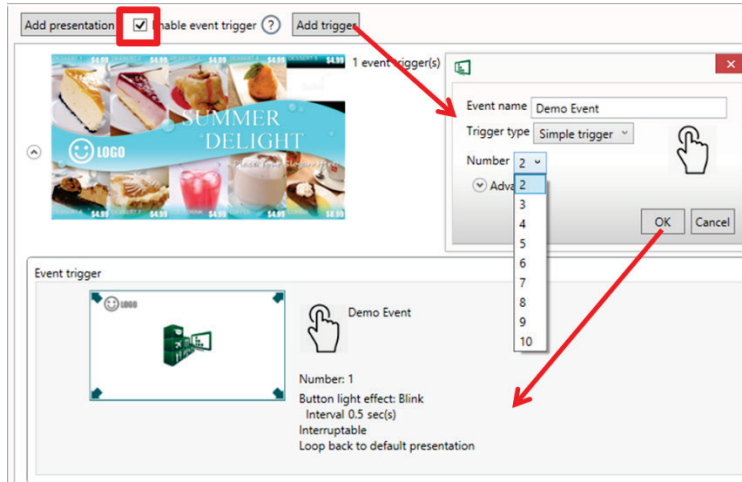


1. Right click a schedule and select "Duplicate" OR click duplicate button of a schedule
2. Edit schedule of new event
3. Click OK to save new event



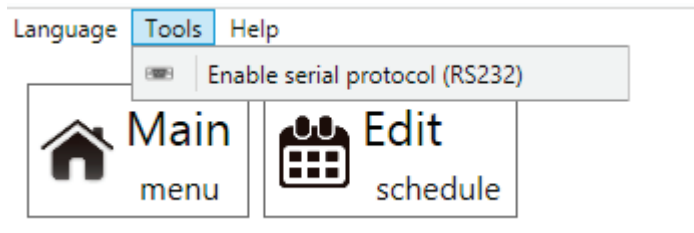
### 3.10.7 Adding trigger event

1. Enable event trigger
2. Add trigger to current presentation

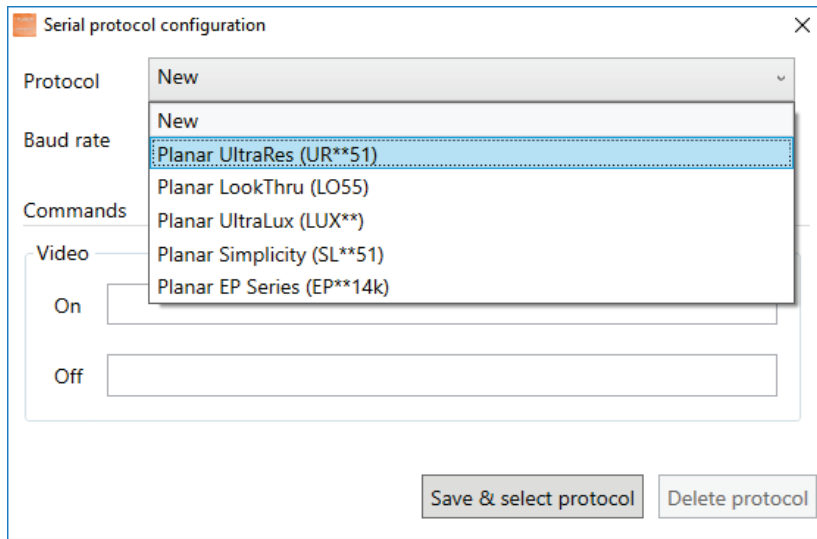


### 3.10.8 Send power on and standby RS-232 command to display

Select a playlist and launch the configuration menu from Tools -> Enable serial protocol (RS232) as shown below.



Configure baud rate, send EOL, video on (display power on) and video off (display standby) as shown below. Each playlist could select a serial protocol to manage display on/off and the configured value of the serial protocol could be modified once the protocol is selected and enabled. You can select a pre-loaded display protocol or input serial commands manually if the display model is not listed.



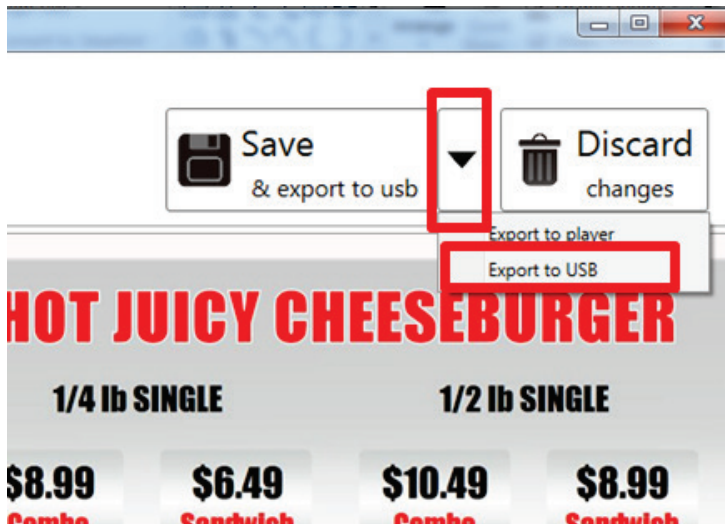
## 3.11 Export Playlist

### 3.11.1 Export playlist via USB

Click the export button and click Export to USB, and then select the correct location for export.

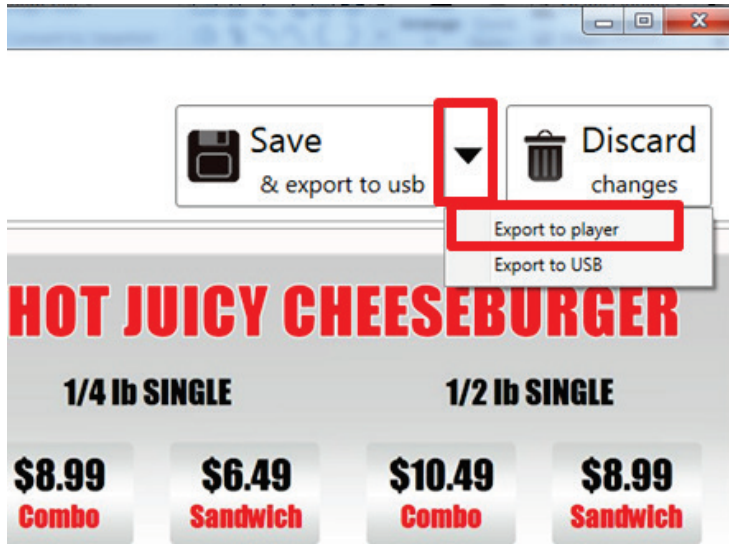
Note:

ContentSmart will remember your action, so next time you only need to click 'Save' to export.



### 3.11.3 Export playlist via Network

- 1 Click the export button and click Export to player.



- 2 Scan devices on your network or add them by typing their IPs.

Note:

*If a player is already associated with another playlist, it will not show in this list. Please add by its IP address.*

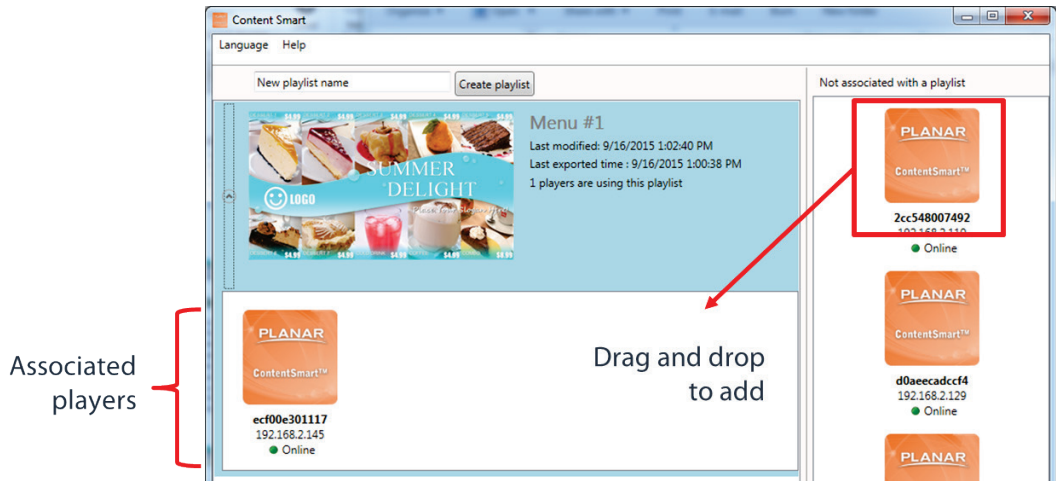


- 3 Select devices for export.
- 4 After export, the selected players will be associated with this playlist.

### 3.11.4 Player association

After export, the players are associated with the playlist and will be listed under the playlist in the main menu.

You can also assign a player to a playlist by dragging the player and dropping it to the playlist in the main menu.

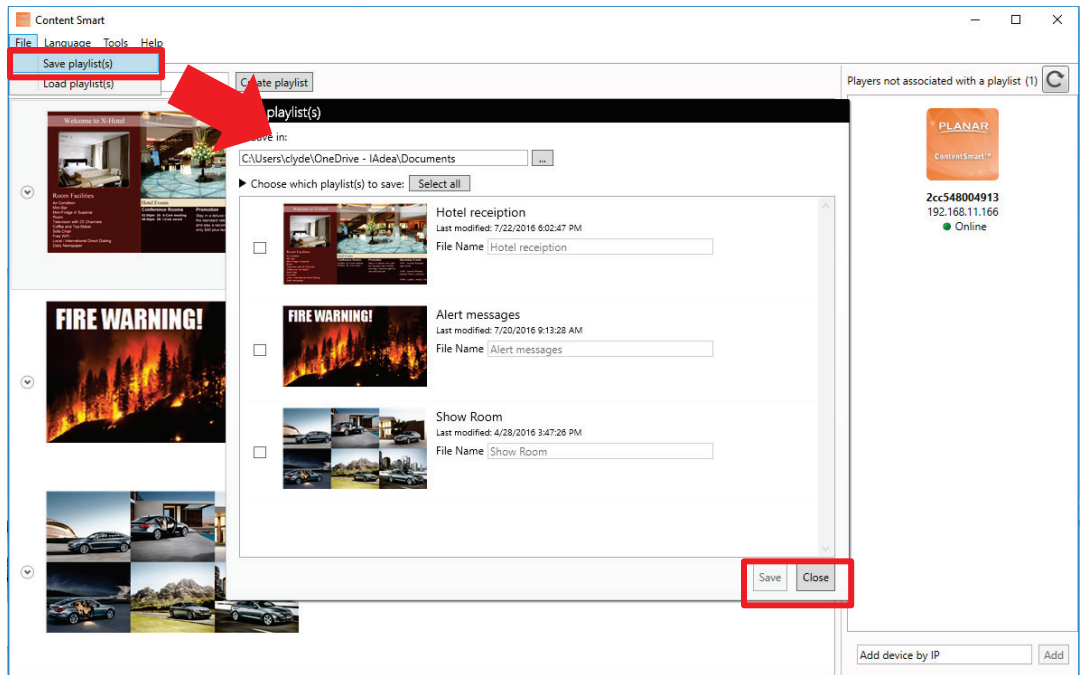


## 3.12 Save / Load Playlist

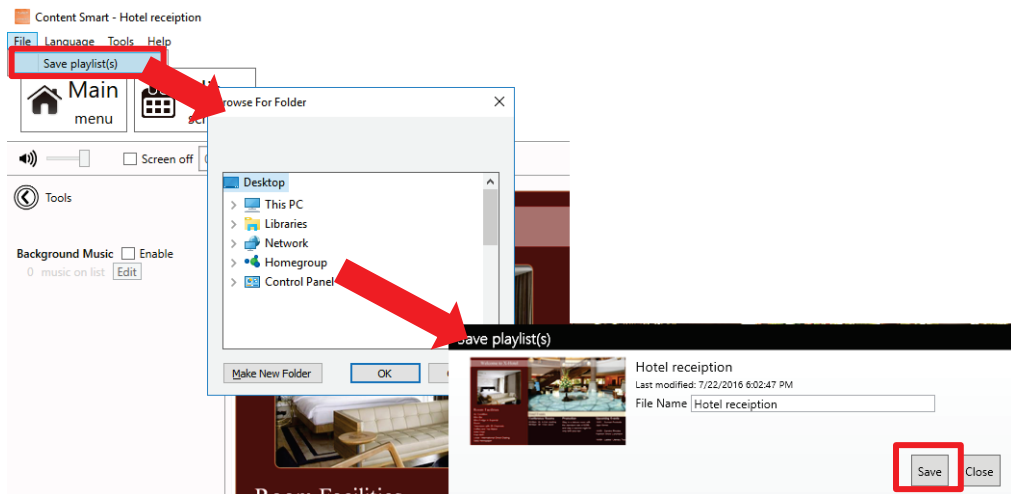
### 3.12.1 Save playlist(s)

Migrating your playlist to another computer can be done easily with the save/load playlist function. You can save multiple playlists at the main menu by providing a save location and file name to saved playlists, and then clicking on save when ready.



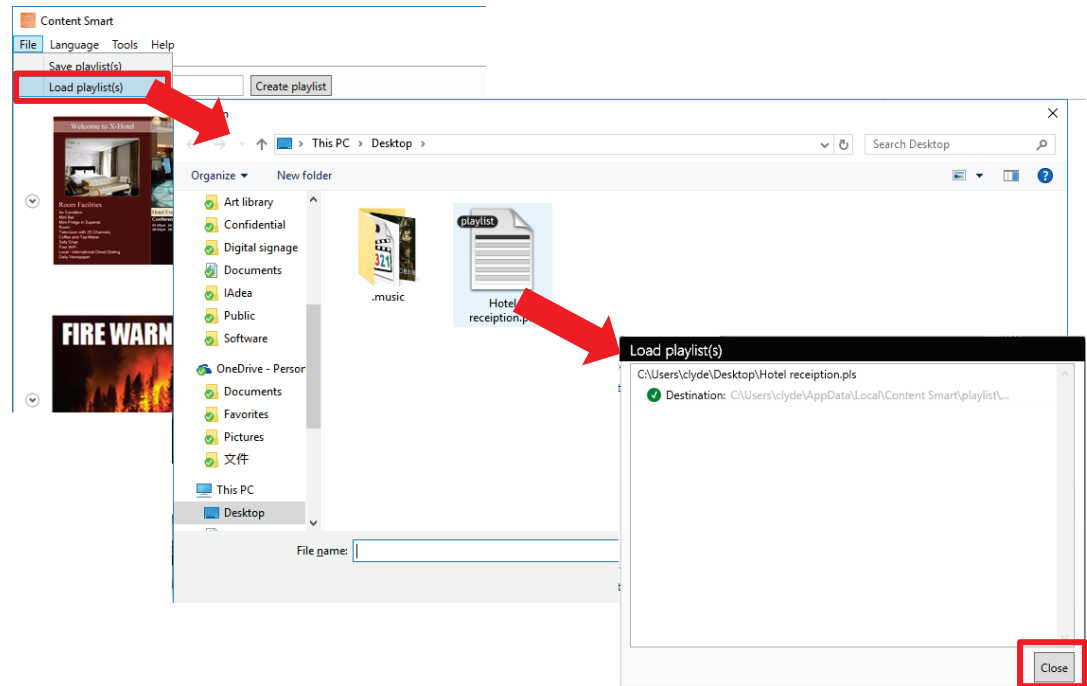


Or you can save an individual playlist when editing the playlist:



### 3.12.2 Load playlist(s)

Load the playlist to the software from the File menu. Press Ctrl + select playlist files to load multiple playlists at once.



## 4 Customer Support

### 4.1 Software and Firmware Updates

Updates provide enhanced features and reliability for Planar ContentSmart Media Players.

Firmware upgrade poses certain risks and in rare cases, failure during the upgrade process may cause the device to stop functioning and need to be returned for warranty service.

Please refer to [www.Planar.com/ContentSmart](http://www.Planar.com/ContentSmart) for any software and firmware updates.

### 4.2 Troubleshooting

This section is intended as a quick reference for frequently encountered issues.

#### *4.2.1 Can Planar ContentSmart Media Player hardware be configured through the software?*

Planar ContentSmart Media player hardware configuration is not yet supported through the software. Please refer to the player's user manual for hardware configuration.

#### *4.2.2 Can News, RSS widgets be played in areas other than the ticker zone?*

The News and RSS widgets are designed to display in the ticker zone only. Scheduling them to play in other area may result in cutting off some text.

#### *4.2.3 Player Mode Settings*

If your player cannot synchronize contents, you may need to switch to another operation mode. Please refer to the player configuration section of User Manual on changing the operation mode.

Regardless of the display resolution, all videos are played in 16:9 or 4:3 aspect ratio, depending on widescreen or standard ratio LCD displays.

#### *4.2.5 Microsoft PowerPoint Slideshow Feature Availability*

ContentSmart Software has a Microsoft PowerPoint slideshow feature that requires Microsoft PowerPoint 2003, 2007, 2010 or 2013 installed. If Microsoft PowerPoint is not detected, Microsoft PowerPoint files will not be listed when selecting media files.

#### *4.2.6 JPEG image compatibility notice*

ContentSmart Software works best with 1920x1080 for 1080p media players and 3840x2160 for 4K media players. Using native images direct from a camera may result in the image not being displayed or displayed incompletely.

#### *4.2.7 "Please Wait" message shows up often and takes long time to go away*

Each time you connect a media player or change its network settings, a new entry is added to the list of possible network devices in the ContentSmart Software. The program runs a background service to verify that the players listed are online. The service responds quickly when players in the list are online, but may reply slowly when dealing with disconnected players because it waits for a network timeout before determining an offline status. (●). To improve response times, remove unused players by right clicking on the player in the list and selecting *Remove from list*.

## 4.4 Planar Support

### *4.4.1 Cables and Accessories*

To find cables and accessories for your Planar ContentSmart Media Player, monitor, touch screen or other products visit our online store at [www.PlanarOnline.com](http://www.PlanarOnline.com).

### *4.4.2 Technical Support*

Visit Planar at [www.planar.com/support](http://www.planar.com/support) for operation manuals, touchscreen drivers, warranty information and access to Planar's Technical Library for online troubleshooting. To speak with Planar Customer Support, please have your model and serial number available and call:

Planar Support

Tel: 1-866-PLANAR1 (866-752-6271) or +1 503-748-5799 outside the US.

Hours: 24 hours a day, 7 days a week.

Toll or long distance charges may apply.



**205 Westwood Ave, Long Branch, NJ 07740**  
**Phone: 866-94 BOARDS (26273) / (732)-222-1511**  
**Fax: (732)-222-7088 | E-mail: [sales@touchboards.com](mailto:sales@touchboards.com)**

Planar, a Leyard company

Customer Service

24x7 Online Technical Support: [www.planar.com/support](http://www.planar.com/support)

1195 NW Compton Drive

Beaverton, OR 97006-1992

Tel: 1-866-PLANAR1 (866-752-6271), +1 503-748-5899 outside the United States

Hours: 24 hours a day, 7 days a week

© 01/2017 Planar, a Leyard company

Planar is a registered trademark of Planar, a Leyard company. Other brands and names are the property of their respective owners. Technical information in this document is subject to change without notice.

020-1190-01C