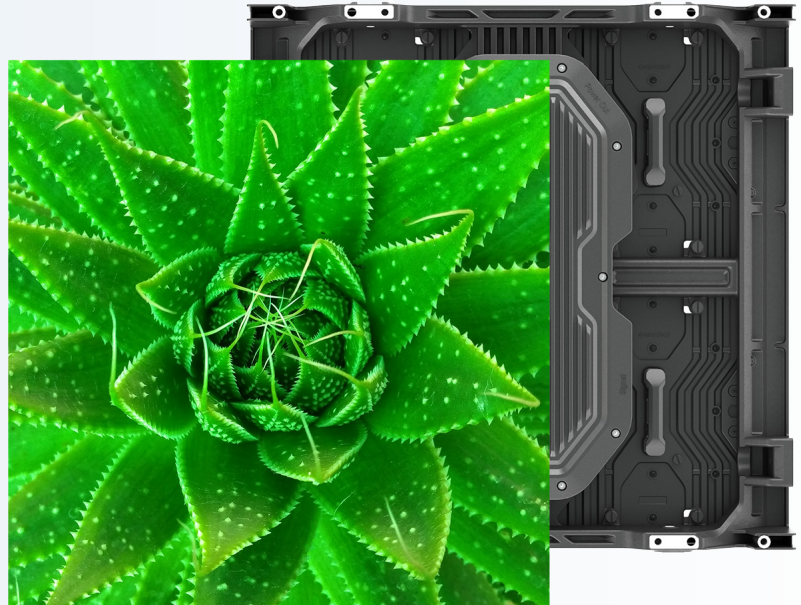




Planar Luminate Ultra Series

Outdoor LED Video Wall

- ▶ *1.2, 1.5 & 1.9mm pixel pitches*
- ▶ *Up to 3,500-nit brightness*
- ▶ *IP65 outdoor protection rating*
- ▶ *90° corners or faceted curves*

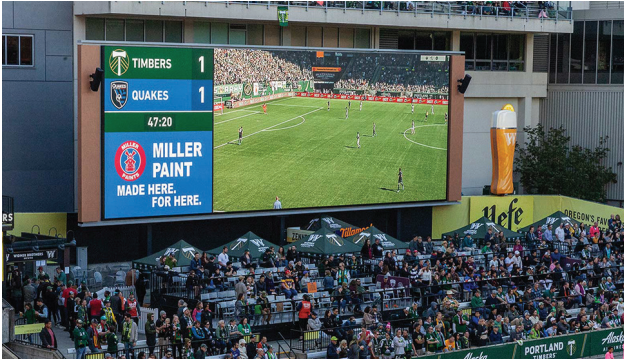


Planar® Luminate™ Ultra Series LED video wall displays are designed to bring to outdoor environments the same level of image detail historically reserved for indoor spaces. Their fine pixel pitch supports comfortable viewing from as close as 6 feet, and high brightness ensures visibility even in direct sunlight, easily facilitating any outdoor application from transportation and retail signage to company picnics and poolside cinema.

High Bright, Fine Details

Planar Luminate Ultra Series LED displays are suitable for every sunny-day application due to its very-high up to 3,500-nit brightness. The brightness paired with the fine pixel pitch are ideal for up-close high resolution content for sports stadium walkways, digital advertising and more. They are excellent for indoor spaces with high ambient light as well.





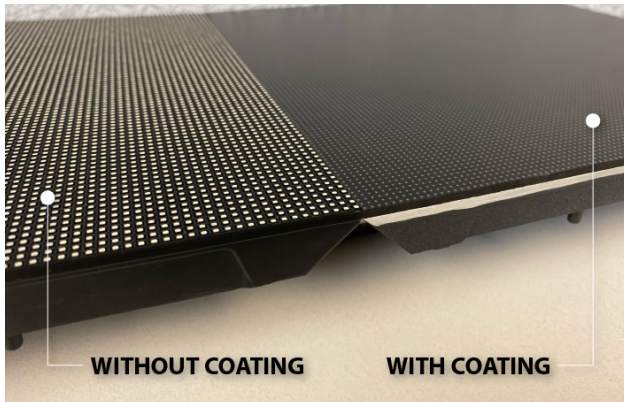
Visual Enhancement

Planar Luminate Ultra Series displays feature advanced LED technology that uses less power, delivers more light with no reflection, and offers ultra-wide viewing angles of 160° vertically or horizontally.



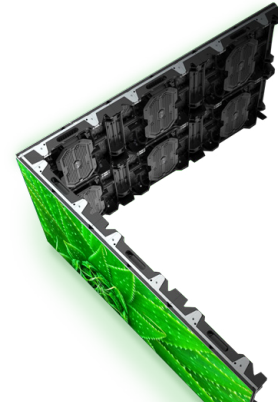
Weatherproof

Planar Luminate Ultra Series displays feature an IP65 Ingress Protection Rating which means they are dust tight and protected against even powerful water jets, making them an exciting and viable option in any weather.



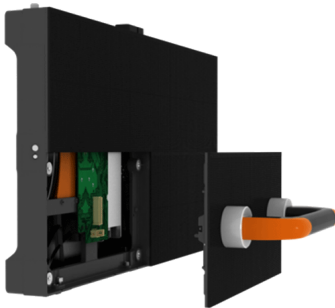
Added Assurance

The displays have a protective coating that fills the tiny gaps between LEDs and covers them at the module level, increasing ruggedness and weather protection. The coating also increases visual contrast, delivering deeper black levels.



Turn the Corner

Display modules and cabinets have 45° beveled edges enabling video walls to wrap around 90° corners for unique installations, and opening the displays for use in more creative applications.



Front & Rear Service

A modular design offers full front or rear access to electronics enabling more deployment options and making any needed maintenance and service simpler. It facilitates narrower wall-mounted installations with narrow footprints.



Specifications

Model	LUO-1.2	LUO-1.5	LUO-1.9
Pixel Pitch (mm)	1.2	1.5	1.9
LED Package	MicroLED	SMD	
Cabinet Size (W x H x D)	19.69" x 19.69" x 3.51" (500 x 500 x 89.1 mm)		
Cabinet Diagonal	27.83" (707.10mm)		
Cabinet Area (m²)	0.25		
Cabinet Resolution	392 x 392	320 x 320	256 x 256
LEDs per Cabinet	153,664	102,400	65,536
Modules/Cabinet (W x H)	2 x 2		
Module Size (W x H)	250 x 250mm		
Power Consumption, Max (watts)	190	145	140
Line Voltage	100~240v AC, 50/60Hz		
Cabinet Weight (per display)	≤19.84lbs 9kg		
Cabinet Weight (per m²)	≤ 79.36lbs 36kg		
Brightness Max, Calibration On (cd/sq)	3,000	3,500	
Supported Frame Rate	60Hz		
Color Temperature (k)	8,000-9,000 adjustable		
Contrast	5,000:1		
Viewing Angle (50% brightness)	>160° horizontal; >150° vertical		
Mounting Orientation	Wall, Faceted, Hanging, Stacking		
Installation/Service Access	Front/Rear		
Refresh Rate	3,840Hz		
LED Lifetime (50% brightness)	>75,000 hrs		
Operating Temperature/Humidity	-4° to 122° F -20° to 50° C (10-80% RH, non-condensing)		
Storage Temperature/Humidity	-31° to 140° F -35° to 60° C (10-85% RH, non-condensing)		
Ingress Protection Rating	IP65 Front/Back		

For more information, click to visit: www.planar.com/luminate-ultra

Planar is a trademark of Planar Systems, Inc. All other trademarks and service marks are property of their holders. Copyright © 2023 Planar Systems, Inc. All rights reserved. This document may not be copied in any form without permission from Planar. Information in this document is subject to change without notice. 5/2023