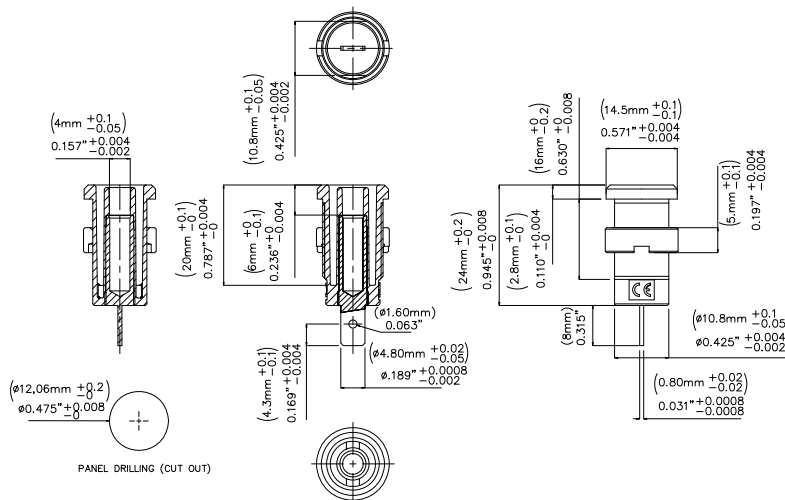


**Model 72913**

Panel Mt IEC61010 4mm (0.16in) Jack for Sheathed Banana Plugs



**Model 72913**  
Panel Mount IEC61010 4mm (0.16in) Jack for  
Sheathed Banana Plugs



**Features**

- Panel Mt. IEC61010 4mm (0.16in) Jack for Sheathed Banana Plugs.
- Solder Tab.

**Materials**

- Body: Polyamide
- Nut: Nickel-plated
- Solder Tab: Gold-plated Nickel Brass

**Specifications**

|                |                |
|----------------|----------------|
| Max Current    | 36A            |
| Max Voltage    | 1000 V CAT III |
| Max Resistance | Less than 5 mΩ |

**Ordering Information**

Model: 72913-\*

\* = Color; Sold in packages of 10 pieces.  
Available colors: Black (-0), Red (-2)

**USA:** Sales: 800-490-2361  
Technical Support: [technicalsupport@pomonatest.com](mailto:technicalsupport@pomonatest.com)  
Fax: 425-446-5844  
**Europe:** 31-(0) 40 2675 150 **International:** 425-446-5500  
**Where to Buy:** [www.pomonaelectronics.com](http://www.pomonaelectronics.com)

All dimensions are in inches. Tolerances (except noted): .xx = ±.02" (.51 mm), .xxx = ±.005" (.127 mm). All specifications are to the latest revisions. Specifications are subject to change without notice. Registered trademarks are the property of their respective companies.