

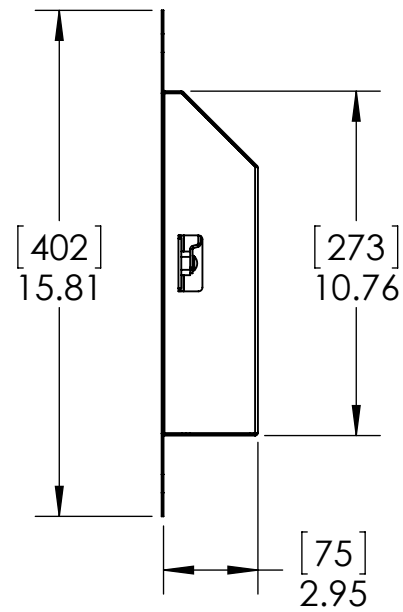
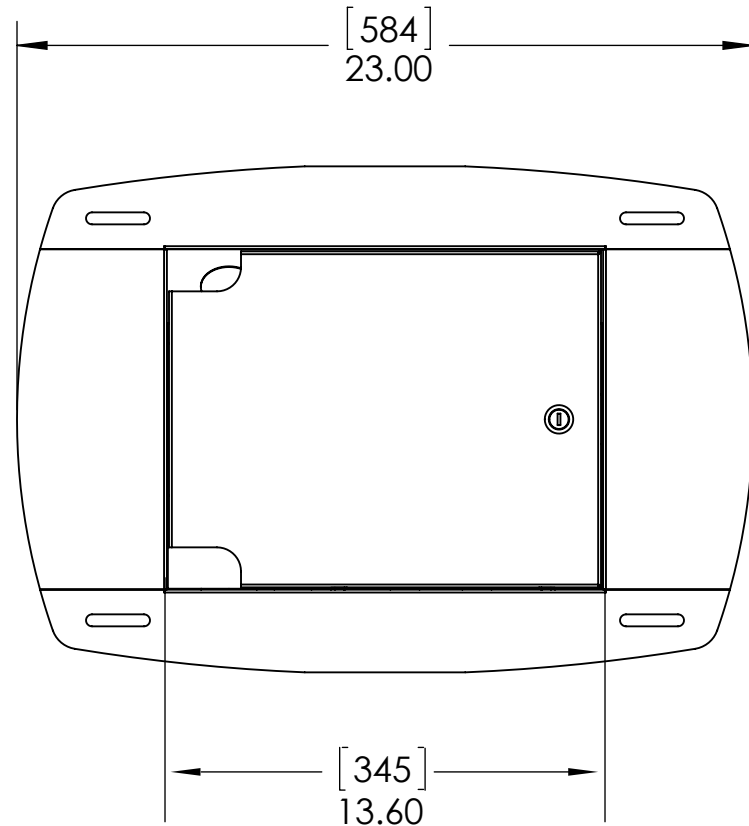
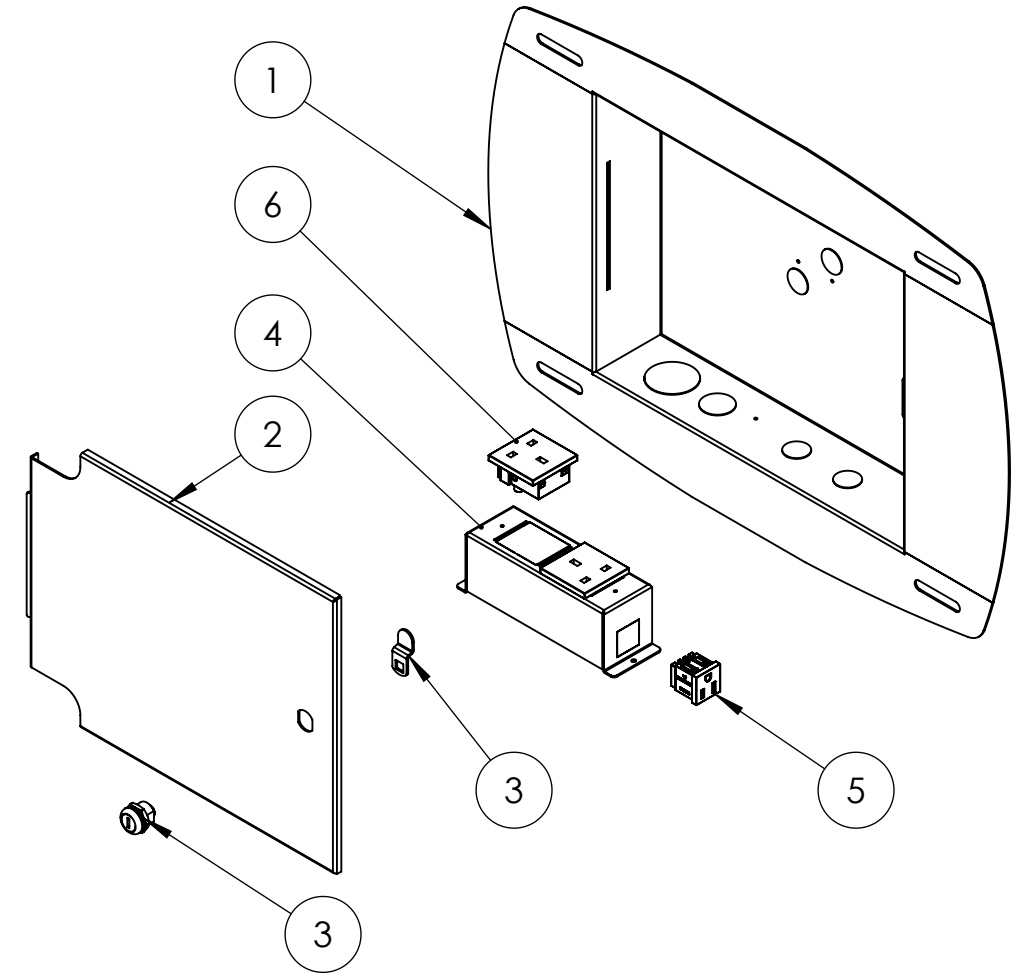
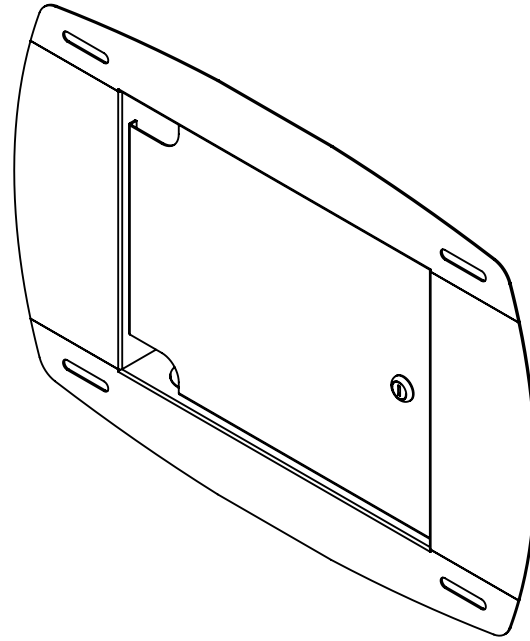
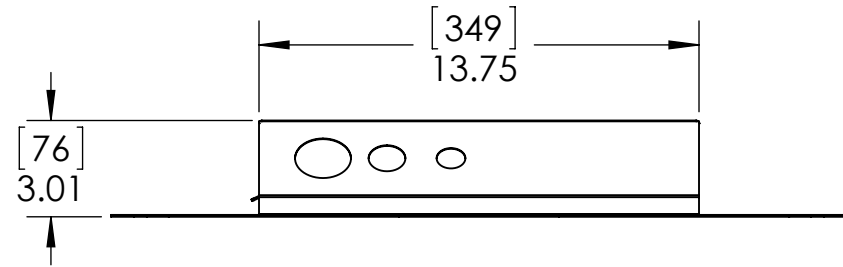
THE INFORMATION CONTAINED IN THIS DRAWING IS THE SOLE PROPERTY OF PREMIER MOUNT DIVISION OF <PMPI> ANY REPRODUCTION IN PART OR WHOLE WITHOUT THE WRITTEN PERMISSION OF PREMIER MOUNT DIVISION OF <PMPI> IS PROHIBITED.

NOTE: ALL DIMENSIONS ARE FOR FABRICATION ASSY AND VERIFICATION ONLY. GEOMETRY IS CONTROLLED AND MAINTAINED BY CAD FILE.

REVISIONS			
ZONE	REV.	DESCRIPTION	DATE



205 Westwood Ave, Long Branch, NJ 07740
 Phone: 866-94 BOARDS (26273) / (732)-222-1511
 Fax: (732)-222-7088 | E-mail: sales@touchboards.com



ITEM NO.	QTY.	PART NUMBER	REV	DESCRIPTION
1	1	3300-030-001-XX	01	IN-WALL BOX
2	1	3300-030-002-XX	01	BOX COVER
3	1	0767-147-028-7X		CAM LOCK 3/4" O.D X 1-1/4"
4	1	3300-030-003-XX	00	SNAP-IN SOCKET BRACKET
5	2	1894-ABA-B02-27		NEMA PLUG RECEPTACLE (FEMALE)
6	2	1958-000-007-28	XX	UK SNAP-IN POWER SOCKET

UNLESS OTHERWISE SPECIFIED
 DIMENSIONS ARE IN INCHES
 TOLERANCES ARE:
 FRACTIONS DECIMALS ANGLES
 +1/32 .X+ .02 ± 2
 .XX ± .01
 .XXX ± .005



IN-WALL BOX FOR AM100

RESP ENG RD DO NOT SCALE DRAWING DRAWN BY RD
 CAD GENERATED DRAWING, DATE: 12-31-12
 DO NOT MANUALLY UPDATE

MATERIAL XX	REFERENCE GB-INW100	SIZE B	DWG. NO. 3300-030-000-XX	REV. 01
FINISH SEE NOTES:	WEIGHT 12.14	SCALE: 1:6	SHEET 1 OF 1	

NOTES:
 1. INTERPRET DRAWING PER (Y14.5)