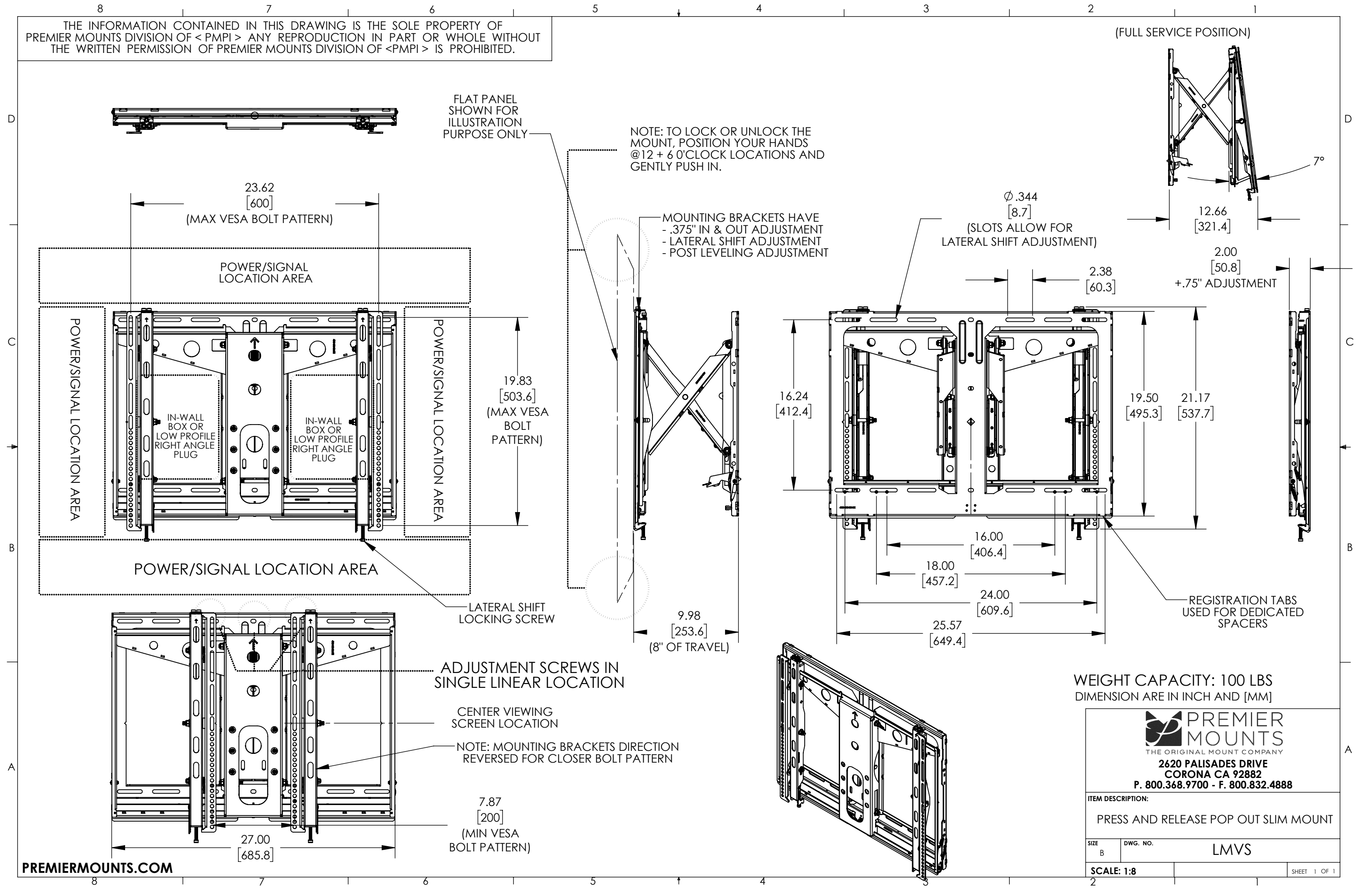


THE INFORMATION CONTAINED IN THIS DRAWING IS THE SOLE PROPERTY OF PREMIER MOUNTS DIVISION OF <PMPI> ANY REPRODUCTION IN PART OR WHOLE WITHOUT THE WRITTEN PERMISSION OF PREMIER MOUNTS DIVISION OF <PMPI> IS PROHIBITED.

(FULL SERVICE POSITION)



FLAT PANEL SHOWN FOR ILLUSTRATION PURPOSE ONLY

NOTE: TO LOCK OR UNLOCK THE MOUNT, POSITION YOUR HANDS @ 12 + 6 O'CLOCK LOCATIONS AND GENTLY PUSH IN.

MOUNTING BRACKETS HAVE  
 - .375" IN & OUT ADJUSTMENT  
 - LATERAL SHIFT ADJUSTMENT  
 - POST LEVELING ADJUSTMENT

Ø .344 [8.7]  
 (SLOTS ALLOW FOR LATERAL SHIFT ADJUSTMENT)

2.00 [50.8]  
 +.75" ADJUSTMENT

REGISTRATION TABS USED FOR DEDICATED SPACERS

LATERAL SHIFT LOCKING SCREW

ADJUSTMENT SCREWS IN SINGLE LINEAR LOCATION

CENTER VIEWING SCREEN LOCATION

NOTE: MOUNTING BRACKETS DIRECTION REVERSED FOR CLOSER BOLT PATTERN

7.87 [200]  
 (MIN VESA BOLT PATTERN)

WEIGHT CAPACITY: 100 LBS  
 DIMENSION ARE IN INCH AND [MM]

**PREMIER MOUNTS**  
 THE ORIGINAL MOUNT COMPANY  
 2620 PALISADES DRIVE  
 CORONA CA 92882  
 P. 800.368.9700 - F. 800.832.4888

ITEM DESCRIPTION:  
 PRESS AND RELEASE POP OUT SLIM MOUNT

SIZE B	DWG. NO. LMVS
-----------	------------------

SCALE: 1:8 SHEET 1 OF 1