



AST-2446 INSTALLATION INSTRUCTIONS

Single Stud Installation

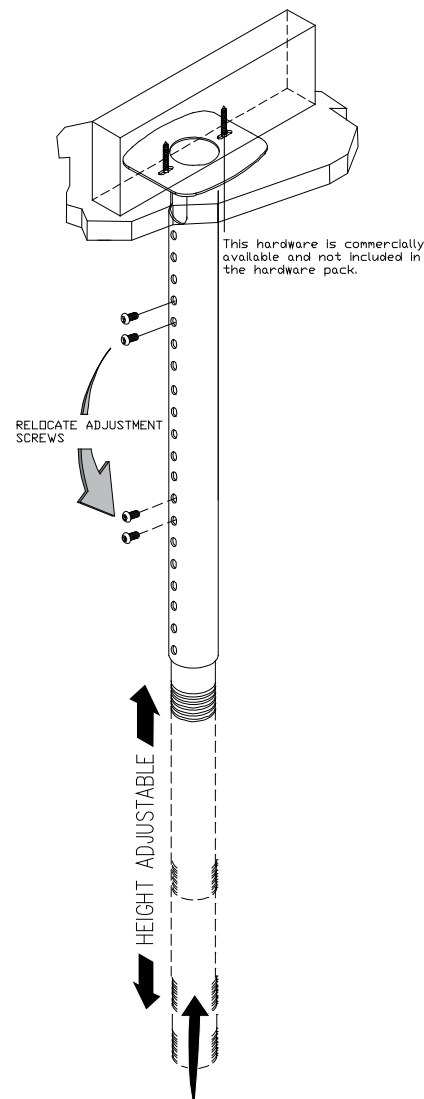
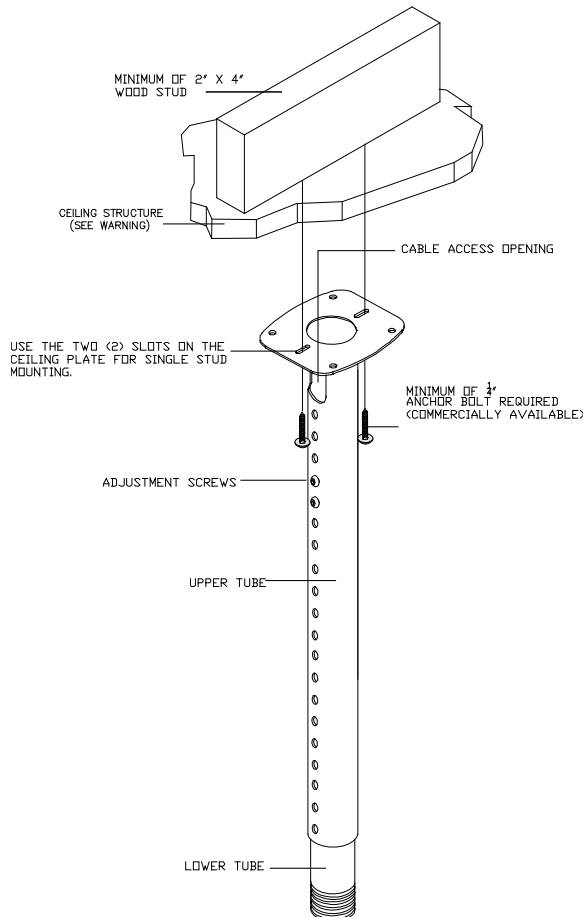
- Step 1.** Secure the ceiling plate to the ceiling structure (see WARNING).
- Step 2.** Use suitable hardware (commercially available), depending on your installation environment, to secure the two (2) mounting points found on the ceiling plate to the ceiling structure.
- Step 3.** Refer to ceiling adapter installation instructions.



The ceiling structure must be capable of supporting a weight of 400 lbs. If not, the ceiling must be reinforced. Proper installation procedure by qualified personnel as outlined in the installation instructions must be adhered to. Failure to do so could result in serious personal injury.



Make sure to hold the flat panel, or projector, securely and remove it from the mount to make the height adjustment prior to loosening the adjustment screws. Loosen, remove, adjust then re-tighten the screws. Failure to do so could result in injury and or damage to the flat panel or projector.



NOTE: TO SECURE THE FLAT PANEL OR PROJECTOR TO THE AST-2446, REFER TO THE INSTALLATION INSTRUCTIONS.

Touchboards
 205 Westwood Ave, Long Branch, NJ 07740
 Phone: 866-94 BOARDS (26273) / (732)-222-1511
 Fax: (732)-222-7088 | E-mail: sales@touchboards.com



Concrete Surface Installation

- Step 1.** Secure the ceiling plate to the ceiling structure (see WARNING).
- Step 2.** Use suitable hardware (commercially available), depending on your installation environment, to secure the four (4) mounting points found on the ceiling plate to the ceiling structure.
- Step 3.** Refer to ceiling adapter installation instructions.



The ceiling structure must be capable of supporting a weight of 400 lbs. If not, the ceiling must be reinforced. Proper installation procedure by qualified personnel as outlined in the installation instructions must be adhered to. Failure to do so could result in serious personal injury.



Make sure to hold the flat panel, or projector, securely and remove it from the mount to make the height adjustment prior to loosening the adjustment screws. Loosen, remove, adjust then re-tighten the screws. Failure to do so could result in injury and or damage to the flat panel or projector.

