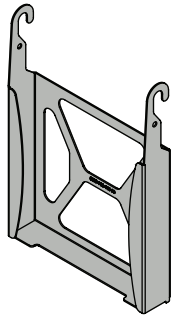


Mac mini™ Mounting Bracket Installation Instructions

205 Westwood Ave, Long Branch, NJ 07740
 Phone: 866-94 BOARDS (26273) / (732)-222-1511
 Fax: (732)-222-7088 | E-mail: sales@touchboards.com



1321 South State College Blvd
 Fullerton, CA 92831 USA
 Phone: 1.800.368.9700
 Fax: 1.800.832.4888

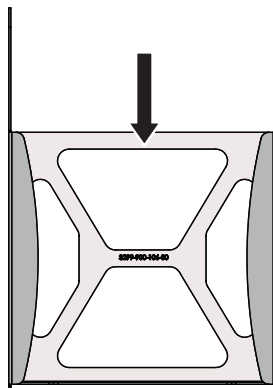


The Mac mini™ Mounting Bracket is the perfect accessory for securely holding a Mac mini™ behind any of Premier Mounts' CTM, PCM and PRO Tilt Series mounts (sold separately).

Step 1

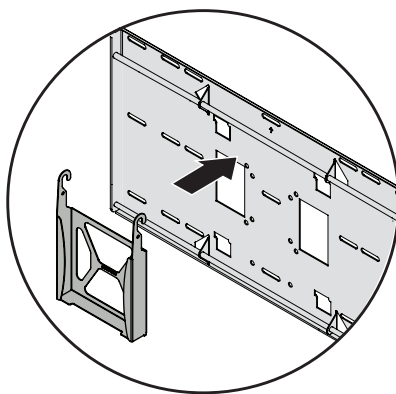
Place the Mac mini™ facedown in the slot of the Mac mini™ Mounting Bracket.

The Mac mini™'s DVD drive should be accessible from the bottom of the mounting bracket.



Front View

Step 3

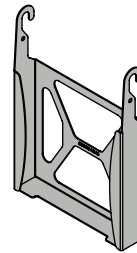


Hook the Mac mini™ Mounting Bracket on the top mounting bar of the mount (Mac mini™ not shown).

The mount must be installed before attaching the Mac mini™ Mounting Bracket.

If using the mounting bracket with a PRO tilt mount, the bottom tabs of the mounting bracket should lock behind the bottom hooks of the back plate.

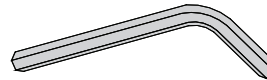
Parts List



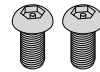
Mac mini™ Mounting Bracket
(Qty 1)



PanelLock™ Security Hook
(Qty 2)



M5 Allen Wrench
(Qty 1)

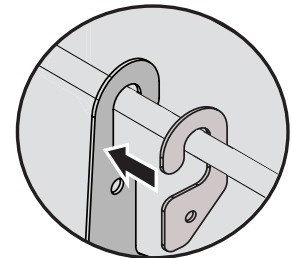


M6 x 12mm Lock-It™ Security Screw
(Qty 2)

Step 4

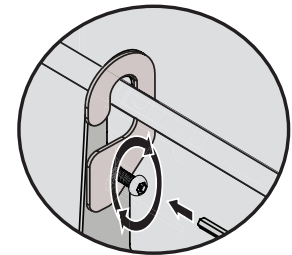
Slide a PanelLock™ security hook on the top mounting bar, placing it on the outside edge of the Mac mini™ Mounting Bracket.

Make sure the PanelLock™ security hook is facing the same direction as shown.



Step 5

Insert and tighten one (1) M6 x 12mm Lock-It™ security screw to attach the PanelLock™ security hook to the Mac mini™ Mounting Bracket.



Step 6

Repeat steps 4 and 5 to attach the remaining PanelLock™ security hook on the other side of the Mac mini™ Mounting Bracket.

When finished, the mounting bar of the mount will effectively lock the Mac mini™ in place and prevent theft.

• All trademarks are the property of the respective trademark owners.