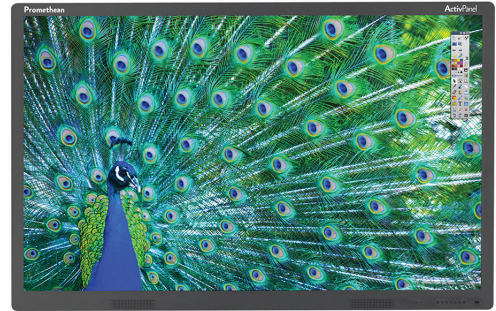


# Touchboards

205 Westwood Ave, Long Branch, NJ 07740  
Phone: 866-94 BOARDS (26273) / (732)-222-1511  
Fax: (732)-222-7088 | E-mail: sales@touchboards.com



## THIS DOCUMENT CONTAINS SPECIFICATIONS FOR

ActivPanel Touch 65 and ActivPanel Touch 70

### DESCRIPTION

The Promethean ActivPanel Touch range offers 65" and 70" interactive flat panel displays that are robust, resilient and optimized for classrooms and meeting rooms. Smooth multi-touch interactivity and Promethean's award-winning ActivInspire software ensure that all users can be active participants. ActivPanel Touch's high-definition, low-glare, low-reflectivity display offers a wide viewing angle, making any seat in virtually any room a great one. With the flexible ActivPanel Touch, it is easy to connect computers and other devices, including open pluggable specification (OPS) computers and mountable miniature computer units such as the Intel® NUC.

### SYSTEM OVERVIEW

#### Installation

The ActivPanel Touch is compatible with VESA mounting systems. The installation of this product should be completed by a Promethean Certified Installer. Use of components not supplied by Promethean or not meeting minimum specifications may impact performance and affect warranty.

#### Support

Online Support for all Promethean Products

### UPGRADE AND ACCESSORY OPTIONS

#### Independent Mobile Stand

The optional Mobile Stand provides mounts compatible with the ActivPanel Touch VESA mount holes and permits use of the ActivPanel Touch without the need for wall mounting, allowing for relocation of the unit within a building

### SYSTEM REQUIREMENTS

#### Operating Systems

Windows (XP SP3/Vista/7/8)

#### PC

2.0 GHz Intel Core 2 Duo or faster for HD-quality videos, 1 GB of RAM is required to play HD quality videos, 1024 x 768 resolution, 1.5 GB of Free Disk Space

### ActivPanel Touch

#### INTERACTIVE FLAT PANEL

|   |  |
|---|--|
| Aspect Ratio                            | 16:9   |
| Resolution                              | Full-HD 1080p (1920 x 1080)  |
| Optimum Resolution                      | 1920 x 1080 @ 60Hz   |
| Contrast Ratio                          | 4000:1   |
| Pixel Fault Resilience Class            | ISO 13406-2 Class II   |
| Viewing Angle                           | 178°   |
| Surface                                 | 4mm acid-etched tempered glass   |
| Number of Touches                       | 6  |
| Response Time                           | 8ms  |
| Digitizing Technology                   | Infrared   |
| Connection to Computer                  | USB 2.0 x 1  |
| Video and Audio Input                   | HDMI x 1, VGA (D-Sub 15 RGB) x 1, Component In (Video Y,Pb, Pr & Stereo Audio) x 1, AV-In (Composite Video & Stereo Audio) x 1, PC Audio (3.5mm) x 1, USB 2.0 (for media playback) x 2 |
| Video and Audio Output                  | AV-Out (Composite Video & Stereo Audio) x 1  |
| Stereo Speakers                         | Integral, 2 x 10W  |
| Open Pluggable Specification (OPS) Slot | 1  |
| VESA Mount Point (NUC/Mini)             | 4 x M4 (VESA 100 and VESA 75, bracket not included)  |
| VESA Mount Point (Wall/Stand)           | 4 x M8 (VESA 400 x 600, bracket included)  |
| Operating Temperature                   | +5°C to +40°C (41°F to +104°F) at 10% to 85% humidity  |
| Storage Temperature                     | -20°C to +55°C (-4°F to +113°F) at 5% to 95% humidity  |
| Power                                   | AC   |
| Power Consumption                       | 340W max   |
| Packed Contents List                    | ActivPanel Touch, VESA mount bolts, power cable, 5m (16ft) USB cable, Infrared Remote Control, Installation Guide, VGA cable, HDMI cable, 3.5mm audio cable, two pens, User Guide      |

#### ACTIVPANEL SPECIFICATIONS BY MODEL

|                         | ActivPanel Touch 65"                            | ActivPanel Touch 70"                            |
|-------------------------|---|---|
| ActivPanel Nominal Size | 65"   | 70"   |
| Active Area Dimensions  | 1432mm x 807mm (56.4in x 31.8in)                | 1549mm x 872mm (61in x 34.3in)                  |
| Active Area Diagonal:   | 1644mm (64.7in)                                 | 1778mm (70in)                                   |
| Panel Usage Type        | TV  | DID   |
| Brightness (typical)    | 360 cd/m <sup>2</sup> (360 Nits)                | 400 cd/m <sup>2</sup> (400 Nits)                |
| Overall Dimensions      | 1536mm x 931mm x 79mm (60.5in x 36.7in x 3.1in) | 1637mm x 981mm x 93mm (64.4in x 38.6in x 3.7in) |
| Net Weight              | 80.5Kg (177lb)                                  | 87Kg (192lb)                                    |
| Packed Dimensions       | 1765mm x 1165mm x 340mm (69.5" x 45.9" x 13.4") | 1895mm x 1210mm 340mm (74.6" x 47.6" x 13.4")   |
| Packed Weight           | 87Kg (192lb)                                    | 101.7Kg (224lb)                                 |