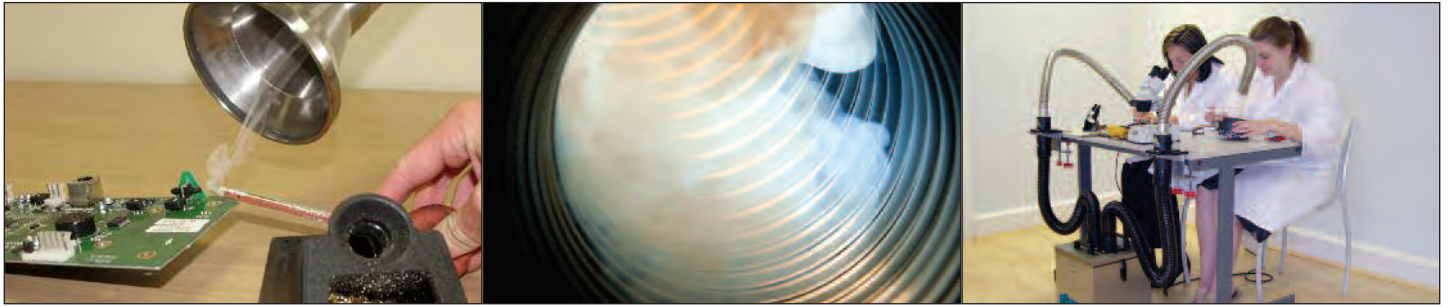




Arms & Accessories



38mm Stainless Steel Flexible Arm Kit For Purex Airflow Valves

	<p>Includes:</p> <ul style="list-style-type: none"> 1 x 38mm x 1m stainless steel flexible arm with fixed pen nib nozzle 1 x Support collar and valve 1 x Screwed bench bracket 1 x 51mm x 2m flexible hose with 2 connecting cuffs <p>Code: 100294</p> <p>Replacement parts available if required.</p>		<p>Includes:</p> <ul style="list-style-type: none"> 1 x 38mm x 1m stainless steel flexible arm (includes 1 x Support collar and valve) 1 x Clamped bench bracket 1 x Pen-nib nozzle (38mm ID) 1 x Conical cowl (95mm ID) 1 x 51mm x 2m flexible hose with 2 connecting cuffs <p>Code: 100295</p> <p>Replacement parts available if required.</p>
--	--	--	--

(Additional Fittings)

<p>Clear hood cowl (265 x 310mm) Code: 840160</p>	<p>Pen Nib Nozzle (38mm ID) Code: 840170</p>	<p>Delta cowl (192 x 5mm inlet) Code: 840182</p>	<p>Conical Cowl (95mm ID) Code: 840190</p>
<p>Screwed bench bracket Code: 840200</p>	<p>Clamped bench bracket Code: 120180</p>	<p>Wall bracket Code: 840210</p>	<p>Bench support collar and valve Code: 840048</p>
<p>Plenum cowl Anti static polycarbonate (black) Includes 57mm airflow valve Code: 120703</p>	<p>Plenum cowl Anti static polycarbonate (clear) Includes 57mm airflow valve Code: 120704</p>	<p>Max W x L 300 x 400mm</p>	

38mm Stainless Steel Flexible Arm For Push Fit Valves

	<p style="text-align: center;">Build</p> <p>This is a high quality stainless steel replacement arm to fit plastic push fit valves.</p> <ul style="list-style-type: none"> 1 x 38mm x 1m stainless steel flexible arm 1 x Pen-nib nozzle (38mm ID) or 1 x Conical cowl (38mm ID) 1 x Tapered fitting <div style="text-align: right;"> </div>
--	---

Pen Nib Type Code: 120143

Conical Cowl Type Code: 120144

50mm Stainless Steel Flexible Arm Kit For Purex Airflow Valves

	<p>Includes:</p> <ul style="list-style-type: none"> 1 x 50mm x 1m stainless steel flexible arm with fixed conical cowl 1 x Support collar and valve 1 x Clamped bench bracket 1 x 51mm x 2m flexible hose with 2 connecting cuffs <p>Code: 100297</p>		<p>Includes:</p> <ul style="list-style-type: none"> 1 x 50mm x 1m stainless steel flexible arm with square end 1 x Support collar and valve 1 x Clamped bench bracket 1 x 51mm x 2m flexible hose with 2 connecting cuffs <p>Code: 100298</p>		<p>Includes:</p> <ul style="list-style-type: none"> 1 x 50mm x 1m stainless steel flexible arm with clear hood cowl & cuff 1 x Support collar and valve 1 x Clamped bench bracket 1 x 51mm x 2m flexible hose with 2 connecting cuffs <p>Code: 100299</p>
--	--	--	--	--	--

Replacement parts available if required.



Arms & Accessories

CleanCab Enclosed Extraction Unit

	<p>Clear Hood with Exhaust Point</p> <p>Base Unit</p> <p>Depth = 510mm</p>	
--	--	--

Complete Kit		Hood Only		Base Only	
	<p>Includes: Base Open hood 57mm Airflow valve Code: 840150</p>		<p>Includes: Open hood 57mm Airflow valve Code: 840159</p>		<p>Includes: Base Code: 840152</p>
	<p>Includes: Base Open hood 75mm Exhaust port Code: 840155</p>		<p>Includes: Open hood 75mm Exhaust port Code: 840171</p>		<p>Includes: Downdraught base + insert Perforated steel plate 75mm Exhaust port Code: 840161</p>
	<p>Includes: Downdraught base + Insert Perforated steel plate Open hood 75mm Exhaust port Code: 840164</p>		<p>Includes: Open hood Code: 840151</p>		

Connection kits with 51mm cuffs are suitable for 57mm valves - for 75mm exhaust port use kit 100185

Clean Air Feed

Free Clean Air

- Purex machines produce very clean air from the exhaust so why not use it?
- This replacement exhaust cowl can be used to supply clean air to equipment such as lasers, ovens and more...

Machine Range:	Code:
200/400, 200i/400i	190040
800i	190039
1500i/2000i	640002



Dual Inlet Manifold

Connect two hose to one machine.

Manifold:	Code:
Aluminium Manifold	120093
Coated Aluminium Manifold for corrosive fumes.	120093C



(1 x 80mm to 2 x 50mm inlets)

Large Flexible Arms - Call

Digital 400 machines and above only.

100mm = Code: 120172

Other diameters please call.



Compressors

30 PSI / 2.1 bar

Compressor:	Code:
Free standing	100284
Integrated*	100283

* 200i/400i/Alpha/Xbase

