

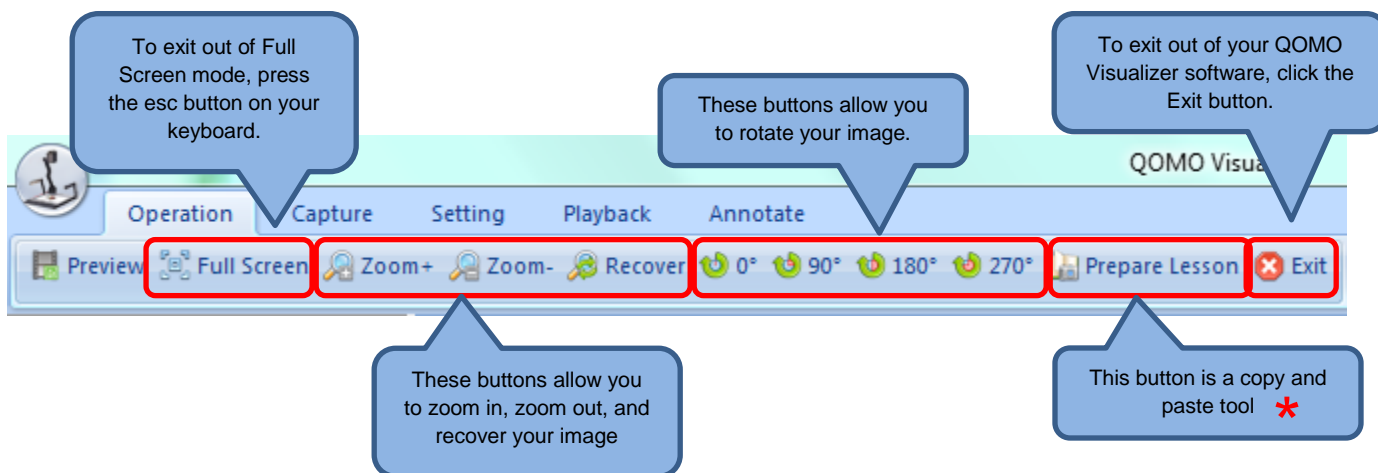
QOMO QPC20 Document Camera Basics

This quick guide gives you the basic information to begin using your QPC20 document camera.

Beginning Your QPC20 Experience

1. Install the QOMO Visualizer software from the CD provided.
2. Connect your QPC20 to your computer using the USB cable provided. This cable provides the connection to your computer, as well as, supplying power to the document camera.
3. Open your QOMO Visualizer software and place the desired item or object under the camera.

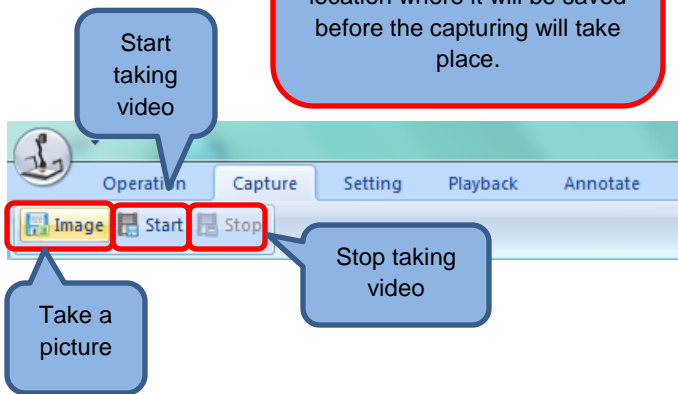
Operation Menu



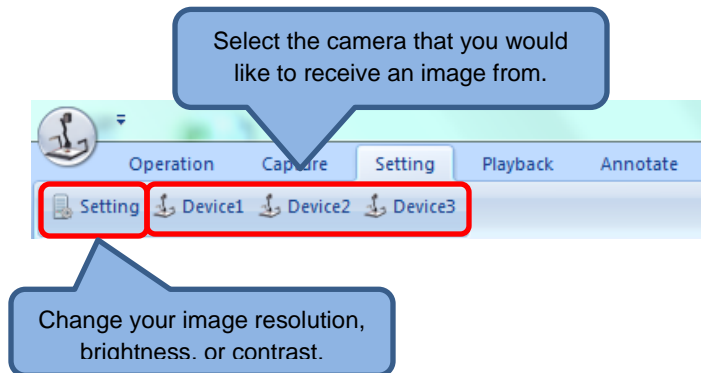
★ To use the Prepare Lesson Copy and Paste Tool:

- Set up your desired object under the document camera.
- Click the “Prepare Lesson” button under the operation menu tab.
- Left click and drag a box around the part of the image you would like to copy and **then right click.**
- Open the application you would like to paste your image into.
- Paste the image in the application (you can use ctrl+v for a shortcut.)

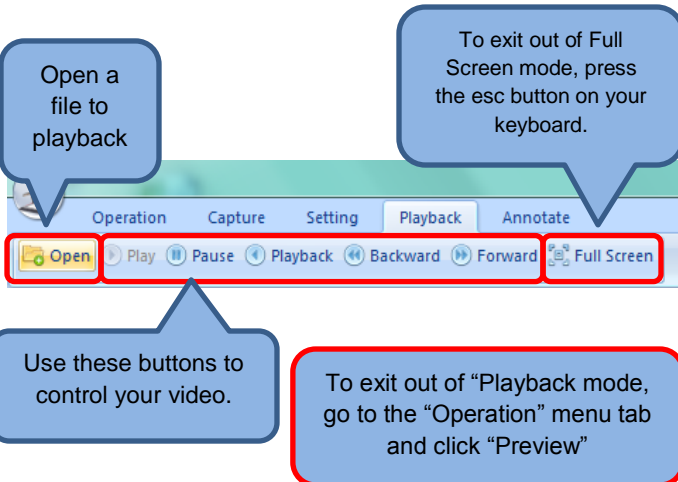
Capture Menu



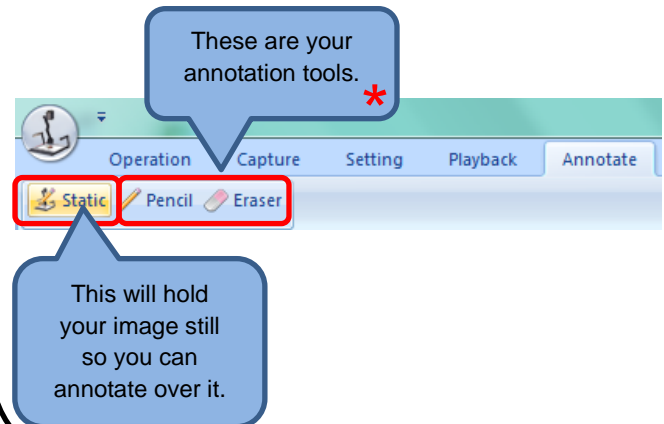
Setting Menu



Playback Menu



Annotate Menu



* To annotate over your QPC20 Document Camera image:

- Set up your desired object under the document camera.
- Select the "Annotate" menu tab.
- Click the "Static" button. This will hold your image still while you annotate.
- Annotate over your image.
- When you are done annotating click the "Static" button again. This will allow you to move your image, if desired.

Touchboards

205 Westwood Ave, Long Branch, NJ 07740
Phone: 866-94 BOARDS (26273) / (732)-222-1511
Fax: (732)-222-7088 | E-mail: sales@touchboards.com