



QUICK SOLDERING

## QUICK Soldering Co.,Ltd

Add: No.11,Fengxiang Road,  
Wujin High-Tech Development Zone, Jiangsu,China  
Tel: 0086-519-86576372 86225678  
Fax: 0086-519-86558599 Zip: 213166  
E-mail:overseas@quickchina.com.cn  
Http://www.quick-global.com



# QUICK SOLDERING

## PROFESSIONAL MANUFACTURER



### COMPANY INTRODUCTION

Quick Soldering has been devoted to research and development of electronic soldering technology for about 20 years. It was the first large-scale manufacturer of soldering products in China.

Leading the market in both technology and quality, Quick is already recognized by electronic engineers at home and abroad. The “lead-free soldering stations”, “lead-free intelligent rework stations”, etc developed by the company can compete with any famous global brands in this field and are considered by many as products of the latest technology. Additionally, the company has also developed and manufactured other products to satisfy customers such as Fume Extractors, Static Eliminators etc.

Quick is the first company to have successfully developed many types of Infrared-Heating and Hot Air-Heating BGA Rework Systems relying on its technical strength, thus making the company the leader in the soldering and desoldering industry.

In recent years, as the automation industry has rapidly developed and a growing number of electronic factories have high expectations on automated production line, the company has continually put out many new products to replace hand soldering like 3-axis automatic soldering robot, 4-axis automatic soldering robot, laser soldering robot, solder melting and dropping soldering robot etc, which are widely used in many manufacturing enterprises such as auto electronics, medical equipment, telecommunication digital products.

The company has obtained the ISO9001 Quality Control System and ISO14001 Environment Protection System certificates, guaranteeing high quality products manufacturing. Our products not only hold the big market share in China, but also have been sold to South-East Asian countries, the Middle East, Europe, South American and North American countries.

Regardless of how changing times may affect contemporary industry standards, we will always be striving to supply the market with cutting-edge products that are both durable and reliable. Our company will continue to provide exceptional services and make notable contributions towards industry's development.

## CONTENT

1-10	Robot Series Soldering Robot Dispensing Robot	
11-16	BGA Rework System	
17-20	Fume Extractors	
21-30	Soldering Equipment Series Soldering Station Self-Feeder Soldering Station Solder Wire Punching Station Thermometer	
31-42	Rework Equipment Series Rework Station Rework System Desoldering Tool Preheater	
43-46	Static Eliminator & Meter Series Static Eliminator Ionizing Air Gun/Power Supply Static Meter Resistivity Tester	
47-49	Other Products Dispensing Controller Lead Free Solder Pot	

**SOLDERING ROBOT**

**QUICK 9234**   **QUICK 9434**



**Specifications:**

Model	QUICK9234	QUICK9434	
Voltage	100-240V AC		
Power	150W		
Temperature Range	50-500 °C (as per working mode)		
Axis	4		
Movement Range	X	250mm	400mm
	Y	250mm	400mm
	Z	100mm	100mm
	R	300°	
Speed Range	X	0.1-800mm/sec	
	Y	0.1-800mm/sec	
	Z	0.1-400mm/sec	
	R	0.1-800°/sec	
Repeat Accuracy	X	±0.02mm	
	Y	±0.02mm	
	Z	±0.02mm	
	R	±0.02°	
Resolution	X	0.01mm	
	Y	0.01mm	
	Z	0.01mm	
	R	0.01°	
Loaded Weight	Worktable	8kg	
	Head	2kg	
Speed Control	Smoothly		
Demo File Number	≤999, Max 60000 points for each file		
Process File Number	≤255		
Solder Wire Dia	0.3, 0.5, 0.6, 0.8, 1.0, 1.2mm		
Environmental	Temperature	0-40°C	
Conditions	Humidity	20%-90%(No Condensing)	
Size W×D×H	420×420×790mm	570×570×790mm	
Weight	Around 20kg	Around 28kg	

**SOLDERING ROBOT**

**QUICK 9233**   **QUICK 9433**



**Specifications:**

Model	QUICK9233	QUICK9433	
Voltage	100-240V AC		
Power	150W		
Temperature Range	50-500°C (as per working mode)		
Axis	3		
Movement Range	X	250mm	400mm
	Y	250mm	400mm
	Z	100mm	100mm
	R	—	
Speed Range	X	0.1-800mm/sec	
	Y	0.1-800mm/sec	
	Z	0.1-400mm/sec	
	R	—	
Repeat Accuracy	X	—	
	Y	±0.02mm	
	Z	—	
	R	—	
Resolution	X	—	
	Y	0.01mm	
	Z	—	
	R	—	
Loaded Weight	Worktable	8kg	
	Head	5kg	
Speed Control	Smoothly		
Demo File Number	≤999, Max 60000 points for each file		
Process File Number	≤255		
Solder Wire Dia	0.3, 0.5, 0.6, 0.8, 1.0, 1.2mm		
Environmental	Temperature	0-40°C	
Conditions	Humidity	20%-90%(No Condensing)	
Size W×D×H	420×420×580mm		570×570×580mm
Weight	Around 18kg		Around 26kg



## HEATING CONTROLLER

### QUICK 378C

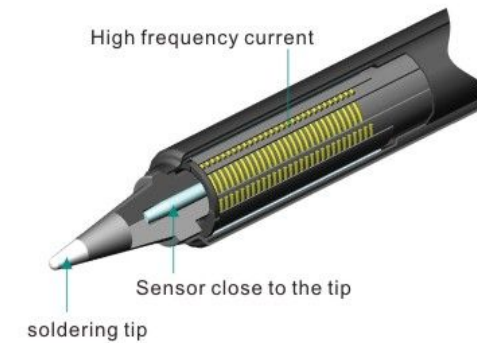
#### Features:

- High frequency current heating, rapid heating and thermal recovery.
- Large LCD screen, displays two temperatures.
- Built-in intelligent and precise temperature compensation system, accurate and stable temperature.
- Auto sleeping and auto shut-off functions available, save energy.
- Digital temperature calibration.
- Temperature locking by password.
- Large power, high heat capacity, suitable for lead free soldering occasion.
- Internal multi-functional buttons ensure precise feeding.
- Feeding speed, time and interval time adjustable, wire backing volume adjustable, avoid waste of soldering wire.
- Wire jamming alarm function, reduce defective products.
- Temperature testing and alarm functions, ensure soldering process.



#### Features:

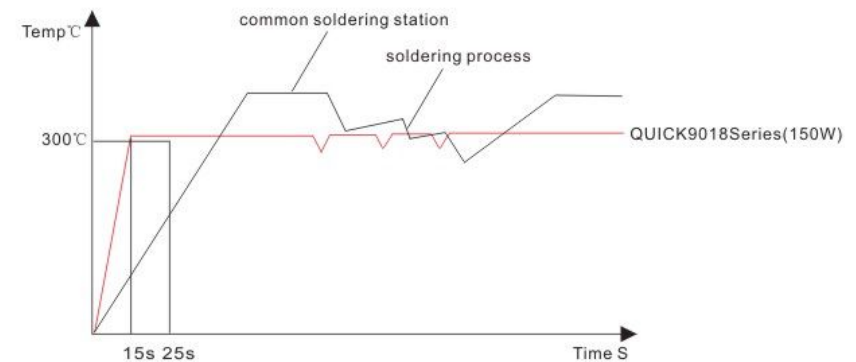
- High frequency current heating, large power, rapid heating and thermal recovery.
- Sensor close to the tip, accurate and stable temperature, rapid temperature recovery.
- High heat capacity soldering tip with long lifetime, tip with slot for quick positioning, easy replacement.
- Separate design of heating element, sensor and soldering tip, low cost.



#### Specifications:

Heating Power	150W
Tip	911G Series
Voltage	100-240V AC
Temperature Range	50℃~500℃ (as per working mode)
Temperature Stability	±2℃ (Stationary air, no load)
Feeding Speed	1mm/S~50mm/S
Backing Volume	0-4.5mm(0-No backing)
Wire Jamming	0-9(0-No alarm, 1-alarm if the wire jams once)
Weight	Around 2kg

#### Temperature Curve Diagram



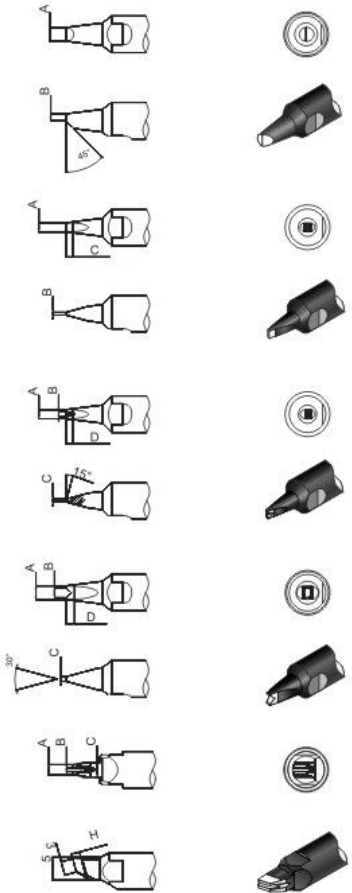
**HIGH QUALITY TIPS**

**Features:**

- Special design, high heat capacity, even coating, long lifetime.
- Various types of tips, can be customized as per customers' demands.



**Replacement tips**



**PC**

	A	B
*** - 10PC	Ø1.0	0.5
*** - 13PC	Ø1.3	0.65
*** - 16PC	Ø1.6	0.8
*** - 20PC	Ø2.0	1
*** - 24PC	Ø2.4	1.2
*** - 30PC	Ø3.0	1.5
*** - 40PC	Ø4.0	2

**D**

	A	B	C
*** - 16D	Ø1.6	0.6	1.5
*** - 20D	Ø2.0	0.8	1.5
*** - 24D	Ø2.4	0.8	1.5
*** - 30D	Ø3.0	1	2
*** - 40D	Ø4.0	1.2	2.5

**DV1**

	A	B	C	D
*** - 16DV1	Ø1.6	1	0.6	1.5
*** - 20DV1	Ø2.0	1.2	0.8	1.5
*** - 24DV1	Ø2.4	1.4	0.8	1.5
*** - 30DV1	Ø3.0	1.6	1	2
*** - 40DV1	Ø4.0	2	1.2	2.5

**DV2**

	A	B	C	D
*** - 16DV2	Ø1.6	1	0.6	1.5
*** - 20DV2	Ø2.0	1.4	0.8	1.5
*** - 24DV2	Ø2.4	1.6	0.8	1.5
*** - 30DV2	Ø3.0	2.2	1	2
*** - 40DV2	Ø4.0	3	1.2	2.5

**N**

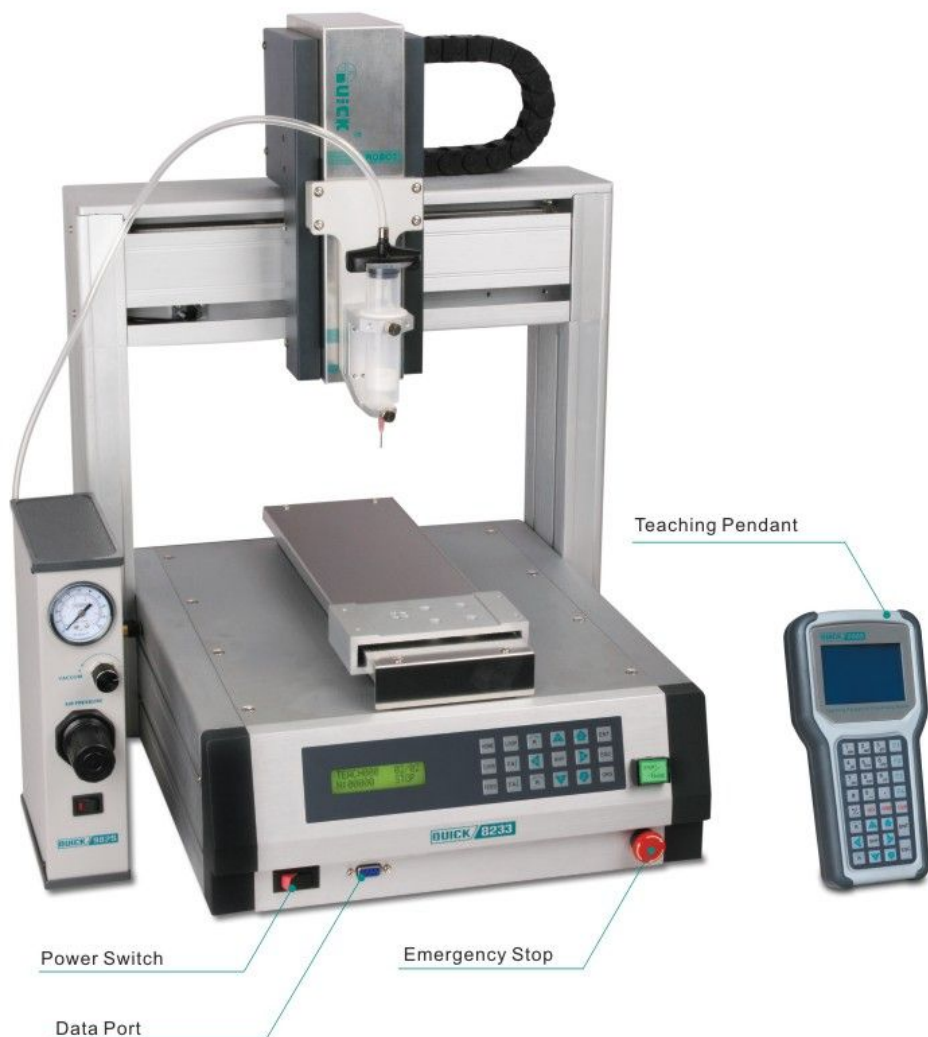
	A	B	C	H
*** - 22N0R418	2.2	0.8	3.2	1.8
*** - 28N0R415	2.8	0.8	3.6	1.5
*** - 30N10H20	3.0	1	4	2
*** - 32N12H23	3.2	1.2	4	2.3
*** - 32N12H28	3.2	1.2	4	2.8

**ON-LINE SOLDERING ROBOT**



**DISPENSING ROBOT**

**QUICK 8233**   **QUICK 8433**

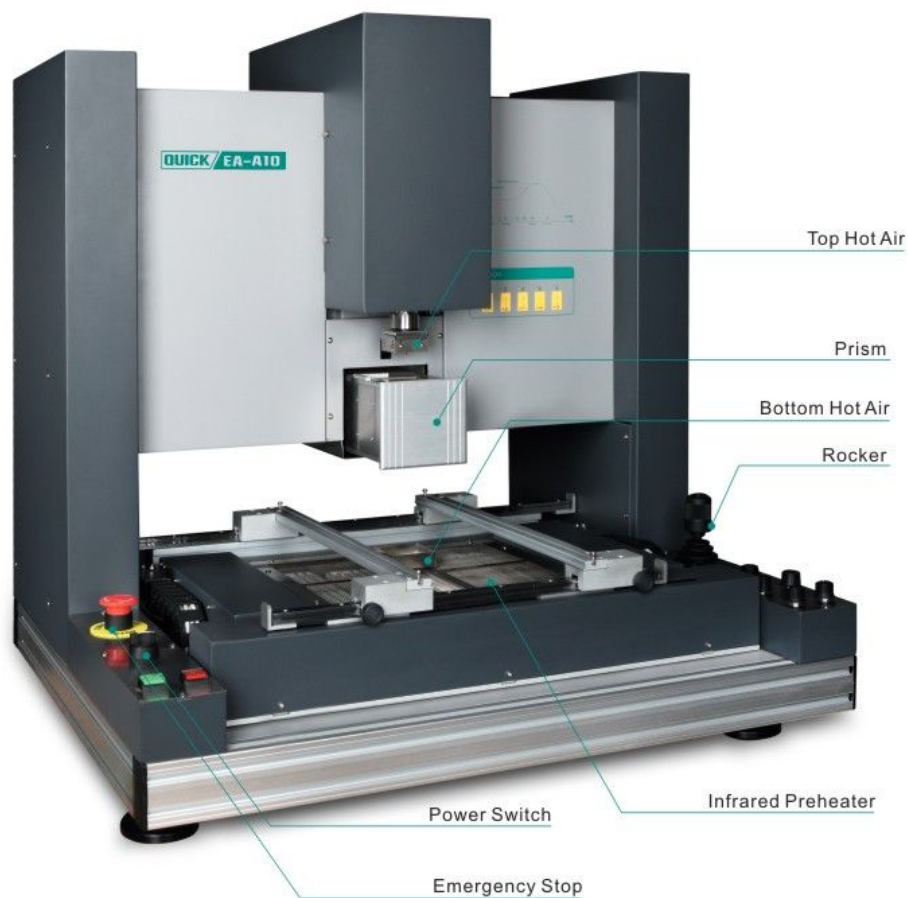


**Specifications:**

Model	QUICK8233	QUICK8433	
Voltage	100-240V AC		
Axis	3		
Movement Range	X	250mm	400mm
	Y	250mm	400mm
	Z	100mm	100mm
Speed Range	X	0.1-800mm/sec	
	Y	0.1-800mm/sec	
	Z	0.1-400mm/sec	
Repeat Accuracy	X		
	Y	±0.02mm	
	Z		
Resolution	X		
	Y	0.01mm	
	Z		
Loaded Weight	Worktable	8kg	8kg
	Head	5kg	5kg
Speed Control	Smoothly		
Gluing Compensation	Glue feeding ahead or delay etc		
Demo File Number	≤999, Max 60000 points for each file		
Process File Number	≤255		
Environmental	Temperature	0-40℃	
Conditions	Humidity	20%-90%(No condensing)	
Size W×D×H	420×420×580mm	570×570×580mm	
Weight	Around 22kg	Around 26kg	

**BGA REWORK SYSTEM**

**QUICK/EA-A10**



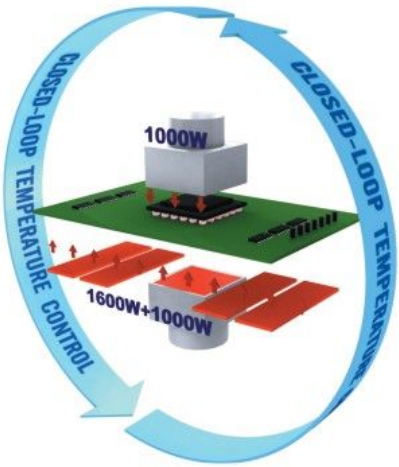
**Features:**

- Top hot air heating, bottom infrared preheating & hot air heating.
- The optical prism 50\*50mm ensures high precision alignment.
- Various types of titanium nozzles available, easy replacement.
- Powerful fan cools bottom heating area rapidly.

**Specifications:**

General Power	4500W(Max)
Voltage	220V/230V AC 50/60HZ
Power of Top Heater	1200W
Bottom Hot Air Power	1200W
Bottom Preheating Power	1600W
Cooling Speed of Side Fan	≤3.5 m <sup>3</sup> /min
Hot Air Temperature Range	400℃ (Max)
Preheating Temperature Range	400℃ (Max)
Bottom Preheating Size	400mm*400mm
Max PCB Size	420mm*300mm
Chip Size Range	2*2mm ~60*60mm
Placement Precision	±0.025mm
Placement Force	1.5N/ No press(Two modes)
Camera	12V/300mA, 22*10 Magnifying, horizontal resolution, 480 lines, PAL format
LED Light	Bottom orange, top blue(Brightness adjustable)
Communication	USB(Connect with PC)
External K-Type Sensor	5 PCS
Net Weight	55kg
Dimensions	810(L) x 675(W) x 835(H) mm

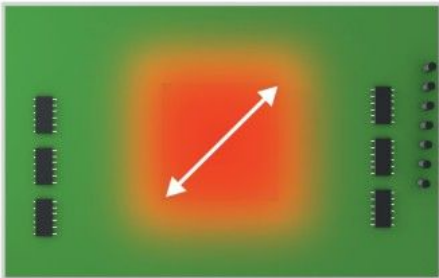




Top and bottom hot air heating and air volume stepless adjustable, ensure rapid heating of main heating area; even heat distribution, can reduce the vertical temperature difference between chip's surface and soldering joint and shorten working time.

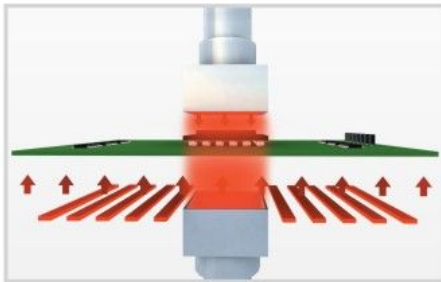


The heating system including top hot air heater, bottom hot air heater and bottom dark infrared heater can reach the target temperature curve more easily, suitable for more soldering occasions, smaller vertical temperature difference, higher soldering CPK.



Horizontal temperature difference picture

# BGA REWORK

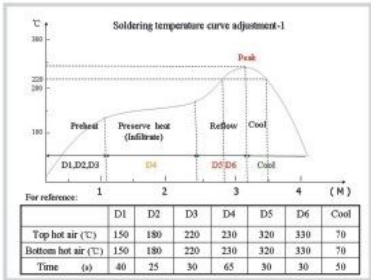


Small horizontal and vertical temperature differences of soldering area, excellent control ability which exceeds nearly 50% of the standards in lead free soldering field, can ensure soldering efficiency and quality.

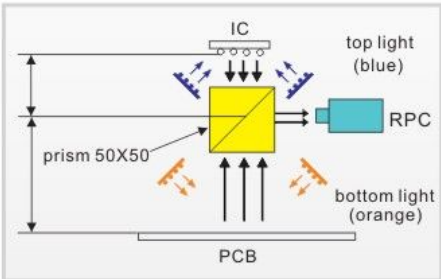
SCAGITCSOFT

Main interface | Alignment | Parameter adjustment | Curve analysis | Advanced set | Help

	D1	D2	D3	D4	D5	D6	Cool
Top hot air(°C)	100	120	200	260	230	220	100
Bottom hot air(°C)	100	130	150	170	180	160	120
Time(s)	20	30	20	30	30	30	30
Bottom preheat T (°C)	110						
Air flow	Top Airflow VT = 100			Bottom Airflow VB = 100			
TC: 123 °C	TB: 123 °C	TIR: 123 °C					



Semi-automatic optical color-difference alignment, easier point-to-point alignment, high precision up to 0.025mm.



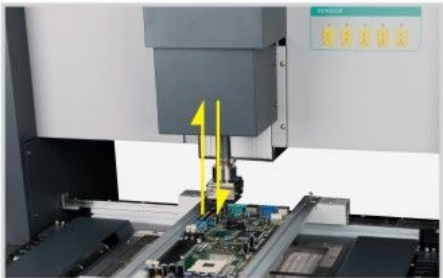
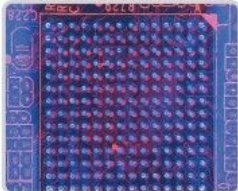
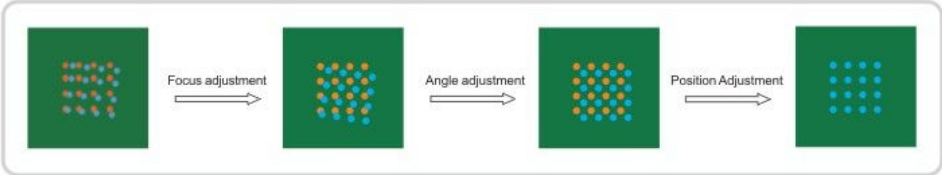
HD camera, automatic focusing, top blue and bottom orange color difference, clear image.



The horizontal movement of PCB and rotation of chip controlled by digital rocker, foolproof design, alignment time 50% OFF.



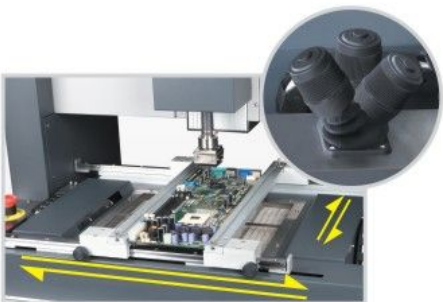
PCB cooling system, uses brushless axial fan, low noise, large volume.



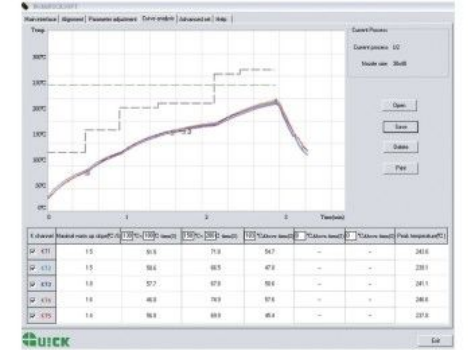
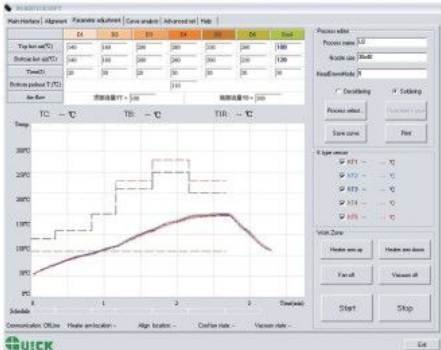
One-key chip placement, high level of automation. zero pressure for chip placing and picking-up, no harsh requirement for the smoothness of solder pads



camera controlled automatically by program, ensure accurate placement of jig for solder paste printing or chips. focal distance memory design, the memory of focal distance adjustment follows the soldering curve, no need to adjust the focal distance again, efficiency of chip placement increases by 15%.



X, Y position move  
X, Y and Z use linear precision orbit and screw rod to run together. MAS assembling system with firm structure, ensure the smooth, accurate and reliable adjustment. Both fine and rough adjustment controlled by precision motor. Rocker operation, easy and convenient.





## FUME EXTRACTOR

**QUICK 6101A**   **QUICK 6102A**

### Features:

- Integrative structure design, easy installation, agile movement, no need to lay any pipelines.
- Large-power brushless DC fan generates large air flow.
- Low noise.
- Triple filter design, remove hazardous substances from fume to ensure body safety. Pre- filter and main filter can be replaced separately to make full use of filters and cut down cost.
- Built-in air cycling filtering system, avoid discharging the cool/hot air outside.
- Both air flow and arms are adjustable.

### Specifications:

Model	QUICK6101A	QUICK6102A
Static Pressure	2200 Pa	2200 Pa
Airflow	200m <sup>3</sup> /h	320 m <sup>3</sup> /h
System Flow(including filter mechanism)	160 m <sup>3</sup> /h	2×100 m <sup>3</sup> /h
Filtering Efficiency	0.3μm 99.97%	0.3μm 99.97%
Power Consumption	80W	120W
Noise	≤55dB	≤55dB
Dimensions	400(L)×230(W)×350(H)mm	470(L)×230(W)×500(H)mm
Qty of Arms	1	2
Weight	About 7.8kg	About 15.5kg



## FUME EXTRACTOR



Pre-Filter



Middle Filter












Main Filter

## APPLICATIONS



**ACCESSORIES**

PART NO	PICTURES	NOTE
KHRR125-75		1. Round absorber hole 2. ESD safe 3. Heat resistant 4. $\phi$ 125mm absorber hole 5. Suitable for the $\phi$ 75mm fume hose
KHRR105-50		1. Round absorber hole 2. ESD safe 3. Heat resistant 4. $\phi$ 105mm absorber hole 5. Suitable for the $\phi$ 50mm fume hose
KHM1		1. Square absorber cover 2. Heat resistant(stainless steel) 3. Size: 150×150×100(H)mm
KHM2		1. Square absorber cover 2. Heat resistant(stainless steel) 3. Size: 180×180×100(H)mm
KHY1		1. Square absorber cover 2. Transparent(Acrylic cover) 3. Size : 200×200×100mm(H)
KHY2		1. Square absorber cover 2. Transparent(Acrylic cover) 3. Size: 250×220×150mm(H)
KAP75-80		1. Directional air hose, 80cm length, 75mm in diameter 2. Used with the bench clamp
KAP75-150		1. Directional air hose, 150cm length, 75mm in diameter 2. Connect to the main unit directly, absorber hole can connect to KHRR125-75
KAV50-80		1. Circle directional air hose, 80cm length, 50mm in diameter 2. Used with the bench clamp
KAP50-80		1. Directional air hose, 80cm in length, 50mm in diameter 2. Used with the bench clamp
KAP50-120		1. Directional air hose, 120cm length, 50mm in diameter 2. Connect to the main unit directly, absorber hole can connect to KHRR105-50

PART NO	PICTURES	NOTE
KAA4		1. Four-section straight fume hose with three joints 2. The length of the first section is 250mm, then 430mm, then 450mm, then 550mm. 3. Used with the bench clamp
KAA3		1. Three-section straight fume hose with two joints 2. The length of the first section is 250mm, then 450mm, then 380mm. 3. Can use the round absorber hole KHRR105-50. 4. Used with the bench clamp
KCC75-75		1. Bench clamp for fume hose, can connect to the $\phi$ 75mm directional air hose above 2. Connect to $\phi$ 75mm soft connecting hose underside
KCC50-75		1. Bench clamp for fume hose, can connect to the $\phi$ 50mm fume hose above 2. Connect to $\phi$ 75mm soft connecting hose underside
KCC50-50		1. Bench clamp for fume hose, can connect the $\phi$ 50mm fume hose 2. Connect $\phi$ 50mm soft connecting hose underside
KCD75-75		1. When table is drilled, assemble KCD75-75, connect to $\phi$ 75mm fume hose 2. Connect to $\phi$ 75mm soft connecting hose underside
kCD50-50		1. When the table is drilled, connect to $\phi$ 50mm fume hose above 2. Connect to $\phi$ 50mm soft connecting hose underside
KCN75-75		1. The total length is 1M. 2. Connect one end to the main unit 3. Connect the other end to either the bench clamp or $\phi$ 75mm absorber cover
KCN50-75		1. The total length is 1M. 2. Connect one end to the main unit 3. Connect the other end to either the bench clamp or $\phi$ 50mm absorber cover



**SOLDERING STATION**

**QUICK/3103**



● Tips see P27

**Features:**

- Heat resistant and long lifetime heating element.
- Rapid heating and thermal recovery, precise and stable temperature control.
- Various long lifetime soldering tips available, easy for using.
- Light soldering iron, comfortable for using.
- New appearance, stable structure.

**Specifications:**

Display	Analog
Power Consumption	70W
Temperature Range	200℃~450℃
Temperature Stability	±2℃ (Stationary air, no load)
Ambient Temperature(Max)	40℃
Tip To Ground Potential	< 2mV
Tip To Ground Resistance	< 2Ω
Dimensions	83(W)×125(H)×140(L)mm
Weight(No Soldering Iron)	1.38KG
Soldering Iron Length	1.2m
Length of 901RAA(No Cable)	190mm
Soldering Tips	961/900M Series

**SOLDERING STATION**

**QUICK/3104**



● Tips see P27

**Features:**

- LCD type
- Heat resistant and long lifetime heating element.
- Rapid heating and thermal recovery, precise and stable temperature control.
- Various long lifetime soldering tips available, easy for using.
- Three favorite temperature points can be set and saved, easy operation.
- Digital temperature calibration, temperature locked by password.

**Specifications:**

Display	LCD
Power Consumption	70W
Temperature Range	100℃~450℃(As per working mode)
Temperature Stability	±2℃ (Stationary air, no load)
Ambient Temperature(Max)	40℃
Tip To Ground Potential	< 2mV
Tip To Ground Resistance	< 2Ω
Dimensions	83(W)×125(H)×140(L)mm
Weight(No Soldering Iron)	1.38KG
Soldering Iron Length	1.2m
Length of 901RAA(No Cable)	190mm
Soldering Tips	961/900M Series

**SOLDERING STATION**

**QUICK/3202**   **QUICK/3205**



901A



● Tips See P27

**QUICK/3202**

**Features:**

- High frequency current heating, sensor close to tip.
- Large LCD design displaying the set and real temperatures simultaneously.
- Micro computer control, rapid heating and thermal recovery.
- Digital temperature calibration, insert-plug design of heating element, easy maintenance.
- Temperature locked by password, three favorite temperatures can be set and saved.
- Optional cleaning ways for tips (sponge and metallic sponge).
- Separate design of heating element, sensor and tip, reducing cost of replacing spare parts.
- Suitable for lead free soldering.

**Specifications:**

Power Consumption	90W
Temperature Range	100℃~500℃ (As per working mode)
Temperature Stability	±2℃ (Stationary air, no load)
Ambient Temperature	40℃
Tip To Ground Resistance	< 2Ω
Tip To Ground Potential	< 2mV
Dimensions	96(W)×160(D)×135(H)mm
Weight(No Soldering Iron)	1.38KG

**QUICK/3205**

**Features:**

- High frequency current heating, rapid heating and thermal recovery.
- Micro computer control, digital calibration, temperature adjustable, auto sleeping and auto shut-off functions available.
- Large power 150W.
- Temperature locked by password, ensure the soldering process.
- Insert-plug design of heating element, easy maintenance, various tips available.

**Specifications:**

Power Consumption	150W
Temperature Range	100℃~550℃ (Max)
Temperature Stability	±2℃ (Stationary air, no load)
Tip To Ground Resistance	< 2Ω
Tip To Ground Potential	< 2mV
Dimensions	200(L)×130(W)×100(H)mm
Weight(No Soldering Iron)	1.4KG

## SELF-FEEDER SOLDERING STATION

**QUICK/375A+** **QUICK/375B+**

### Features:

- Ceramic heating element, long life time, 24V DC heating, safe and reliable.
- Temperature controlled by RTD sensor, rapid heating, temperature precise and stable.
- Imported motor, automatic feeding, coding switch design. More functions available and adjustable, such as feeding speed, feeding volume, interval time, backing time etc.
- Two operation modes: auto and manual.
- Soldering direction may be changed as needed.
- Suitable for soldering connectors, adapters and soldering under other special conditions.

### Specifications:

Motor	Step Motor
Soldering Iron Power Consumption	60W
Temperature Range	200°C -480°C
Temperature Stability	±2°C (stationary air, no load)
Feeding Speed	About 2.7mm/s-27mm/s(36°/s-360°/s)
Feeding Interval Time	0-2.7S
Feeding Volume	0-150mm
Backing Time	0-0.9S (about 0-25mm, regular speed: 360°/s)
Feeding Mode	Auto (1-9)/Manual (0)
Dia of Wire Usable	0.6, 0.8, 1.0, 1.2mm
Solder Wire Usable	≤1kg (roll)
Dimensions	200(L)×138(W)×140(H) mm
Weight	About 2.6kg



● Tips See P27

## SELF-FEEDER SOLDERING STATION

**QUICK/376D1** **QUICK/376D**

### Features:

- High frequency current heating, rapid heating and thermal recovery.
- Micro computer control, digital temperature calibration, auto sleeping function.
- Auto and manual ways of solder feeding optional, auto solder feeding mode can solder nine successive soldering joints at most.
- Imported motor, automatic feeding, coding switch design. More functions available and adjustable, such as feeding speed, feeding volume, interval time, backing time etc.
- Two types of feeding assembly optional, easy to use.
- Pedal switch and manual switch available.

### Specifications:

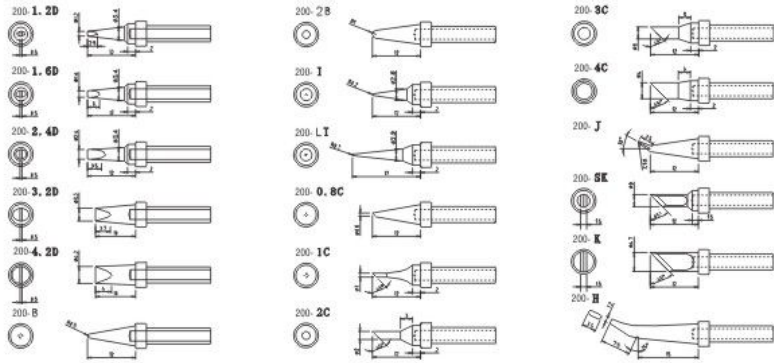
Power Consumption	90W
Operating Voltage of Heater	36V/400K Hz
Temperature Range	50°C -600°C
Temperature Stability	±2°C (Stationary air, no load)
Tip to Ground Potential	<2mV
Tip to Ground Resistance	<2 Ω
Feeding Speed	About 2.7mm/s-27mm/s(36°/s-360°/s)
Feeding Interval Time	0-2.7s
Feeding Volume	0-150mm
Backing Time	0-0.9s(about 0-25mm, regular speed: 360°/s)
Feeding Mode	Auto(1-9)/Manual(0)
Dia of Wire Usable	0.6, 0.8, 1.0, 1.2mm
Solder Wire Usable	1kg(roll)



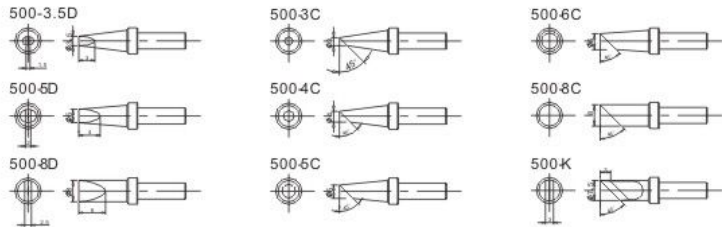
● Tips See P27



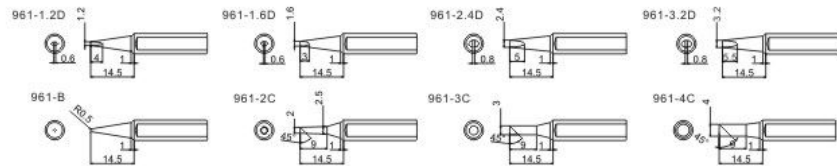
▲ Tips for QUICK3202(901A)/376D/376DI/712A/713A



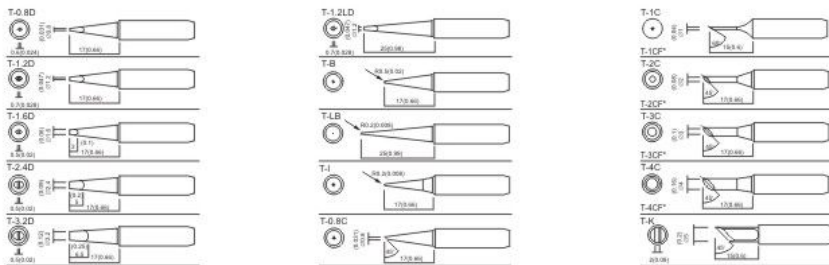
▲ Tips for QUICK3205



▲ Tips for QUICK3103/3104 /700B



▲ Tips for QUICK375A+ / 375B+



**SOLDER-WIRE PUNCHING STATION**

**QUICK 372B**

**Features:**

- Automatic feeding solder wire, easy operation.
- Drill holes with even distance on solder wire automatically, prevent solder wire from spattering during soldering.
- Can be used for drilling holes on solder wire only.
- Feeding speed stepless adjustable, suitable for different applications.

**Specifications:**

Power Consumption	6W
Dia of Soldering Wire	0.3、0.5、0.6、0.8、1.0、1.2、1.5、1.6、2.0mm(can be customized)
Dimensions	76(W)×107(H)×168(L)mm
Weight	About 1.75kg(include pedal switch)





## THERMOMETER

### QUICK/191AD

#### Features:

- Measure tip temperature quickly and accurately with CA sensor ( Dia 0.2mm)
- Auto shut-off function available , shut-off time can be set. If the time when the unit is not in use reaches the set value, the unit shuts it off automatically
- Can record max temperature. It shows the highest temperature of tip when pressing (MAX HOLD) button
- Celsius and Fahrenheit interchangeable

#### Specifications:

Type	Celsius	Fahrenheit
Resolution	1°C	1°F
Measuring Range	0°C -800°C	32 °F -1500°F
Accuracy	±5°C	±10°F
Sensor	K Thermocouple	
	3.5-digit LCD	
Display	B:Battery Alarm	
	1:Burnout	
Power Supply	9V Alkaline Battery recommended	
Battery Lifetime	More than 150 hours	
Ambient Temperature	0°C -40°C	32 °F -104°F
Dimensions	146(L)*35(W)*83(H)mm	
Weight	About 250g	



## SOLDERING TESTER

### QUICK/192

#### Features:

- Measure tip temperature, leak voltage and ground resistance accurately.
- 2-in-1 design, can be used to measure the temperature of solder pot and other solvent with a probe.
- Use reliable micro-computer check, high precision.
- Meet MIL-STD-2000 leak voltage measurement standard.

#### Specifications:

<b>Temperature</b>	
Resolution	1°C
Measuring Range	0-600°C (32°F -1200°F)
Accuracy	±3°C /±6°F
Sensor	K-type thermometer
<b>Voltage</b>	
Resolution	0.1mV
Measuring Range	0-90mV(AC)
Accuracy	±(3%+2 digits)
Note: Meet MIL-STD-2000 standard.	
<b>Resistance</b>	
Resolution	0.1 Ω
Measuring Range	0-90 Ω
Accuracy	±(1%+2 digits)
<b>Display</b>	
LCD	3½ digits
Power Consumption	1 W
Dimensions	158(L)×150(W)×50(H)mm
Weight	About 1.0kg
Environment Conditions	0-40°C , 0-80%RH



## REWORK STATION

**QUICK 957D** **QUICK 957**

### Features:

- Closed-loop sensor, large power, rapid heating, precise and stable temperature.
- Auto cooling, prolong the lifetime of heating element, protect the rework station.
- Imported DC motor, soft vortex air, stepless adjustable.
- Various applications, such as shielding case, connectors, plastic components etc.
- Sensor inside the handle, start working when the handle is picked up, stop working when it is put on the holder.

### Specifications:

Model	QUICK957D	QUICK957
Display	LED(Resolution 1°C)	Analog
Power Consumption	580W	580W
Pump	Soft vortex air(Brushless fan)	Soft vortex air(Brushless fan)
Air Volume	100L/min(Max)	100L/min(Max)
Temperature Range	100°C--450°C	100°C--450°C



- Nozzles See P40

## REWORK STATION

**QUICK 861DW**

### Features:

- Three regular channels "CH1", "CH2" and "CH3", each channel's parameters including temperature and airflow can be set.
- Password protection and key-lock functions.
- Real time operation by the magnetic switch, enter sleeping state when the handle is placed on holder.
- Auto sleeping function, parameters can be set in sleeping mode.
- Closed-loop sensor, temperature can be controlled by zero voltage triggering mode and adjusted conveniently, accurate and stable, not affected by airflow. Large power, rapid heating.
- A multipurpose unit, with brushless whirlpool motor, wide range and stepless adjustable airflow.
- An automatic cooling system can prolong the lifetime of heating element and protect the handle.

### Specifications:

Power Consumption	1000W
Temperature Range	100°C -500°C
Airflow Range	1-120 class
Max Airflow	120L/min
Size(L×D×H)	188(L)×245(D)×135(H)mm
Weight	3.65kg



- Nozzles See P39

## REWORK STATION

**QUICK/856AE** **QUICK/856AX**

### Features:

- Three channels CH1, CH2 and CH3, parameters of each channel like time, air volume and temperature can be preset, can be changed in channel CH0.
- Password protection and button lock function available, prevent menu from being changed at will.
- Easy real-time operation, auto sleeping function available, parameters can be set in sleeping mode.
- Closed loop sensor, temperature controlled by micro computer zero trigger, large power, rapid temperature rising, temperature can be easily and accurately adjusted, not affected by airflow.
- Brushless fan, wide range of airflow adjustable, suitable for many applications.
- Auto cooling function available, long lifetime ceramic heater.

### Specifications:

Power Consumption	1200W
Temperature Range	100°C -500°C
Working Time	1-999s ("----" refers to no time limiting)
Airflow Range	6-200class
Max Airflow	200L/min
Size(L×D×H)	250(L)×230(D)×150(H)mm
Weight	3.80kg



## REWORK STATION

**QUICK/855PX**

### Features:

- CH0-CH9 Channels, each channel includes six working zones.
- Parameters of each working zone like time, air volume, temperature etc can be set and viewed.
- Vacuum pen inside the handle, can be used in various applications.
- Password can be set to protect menu from inadvertent changes.
- Magnetic and pedal switches available, easy operation.
- Closed-loop sensor, micro computer controls the temperature, large power, rapid temperature rising, stable temperature not influenced by air volume.
- Brushless fan, air volume adjustable.
- Auto cooling function available, can prolong lifetime of heating element and protect handle.

### Specifications:

Power Consumption	1300W
Temperature Range	100°C~500°C
Working Time	000~999s/---("----" refers to no time limiting)
Air Volume	6-200 class
Max Air Volume	200L/min
Dimensions	250*230*150mm
Weight (Includes holder)	4.45kg





**REWORK SYSTEM**

**QUICK 700B**

**Features:**

- Rapid heating and thermal recovery, precise and stable temperature control.
- Various long lifetime soldering tips available, easy for using.
- Light soldering iron, comfortable for using.
- Closed-loop sensor, large power, rapid heating, precise and stable temperature.
- Imported DC motor, soft vortex air, stepless adjustable, auto cooling.
- Various applications, such as shielding case, connectors, plastic components etc.
- Sensor inside the handle, start working when the handle is picked up, stop working when it is put on the holder.

**Specifications:**

**Soldering part:**

Power Consumption	70W
Temperature Range	200℃~450℃ (As per working mode)
Temperature Stability	±2℃ (Stationary air, no load)
Ambient Temperature(Max)	40℃
Tip To Ground Potential	<2mV
Tip To Ground Resistance	<2Ω

**Hot air part:**

Power	580W
Pump	Soft vortex air(Brushless fan)
Air Volume	100L/min(Max)
Temperature Range	100℃--450℃



- Tips See p27
- Nozzles See P40

**REWORK SYSTEM**

**QUICK 712A**

**Features:**

- Password lock function, easy control.
- Auto sleeping/shut-off function.
- Digital temperature calibration, easy operation.
- Brushless fan, adjustable, stepless and wide range of air volume, suitable for various applications.
- Large air volume cooling function, prolong lifetime of heating element, protect the hot air handle.
- Closed-loop sensor, precise temperature.
- Light handle, comfortable for using.

**Specifications:**

**Soldering part:**

Power Consumption	90W
Temperature Range	50℃-500℃
Sleeping Temperature Range	50℃-250℃
Sleeping Time Range	0-250min
Temperature Stability	±2℃ (Stationary air, no load)
Ambient Temperature(Max)	40℃
Tip To Ground Potential	<2mV
Tip To Ground Resistance	< 2Ω

**Hot air part:**

Power	1000W
Temperature Range	100℃-500℃
Air Volume	1-120L/min
Ambient Temperature(Max)	40℃
Temperature Stability	±2℃ (Stationary air, no load)



- Tips See p27
- Nozzles See P39



**REWORK SYSTEM**

**QUICK/713A**



**Features:**

- Password lock function, easy control.
- Temperature adjusted by buttons, with auto sleeping/shut-off function.
- Digital temperature calibration, easy operation.
- Suction pen inside hot air handle, convenient for using.
- Brushless fan, adjustable, stepless and wide range of air volume, suitable for various applications.
- Large air volume cooling function, prolong lifetime of heating element, protect the hot air handle.
- Built-in vacuum pump, powerful suction, no need of external vacuum system.
- Closed-loop sensor, precise temperature.
- Light handle, comfortable for using.

**Specifications:**

**Soldering part:**

Power Consumption	90W
Temperature Range	200℃-480℃
Sleeping Temperature Range	50℃-250℃
Sleeping Time Range	1-150min
Temperature Stability	±2℃ (Stationary air, no load)
Ambient Temperature(Max)	40℃
Tip To Ground Potential	<2mV
Tip to ground resistance	< 2Ω

**Hot air part:**

Power	1000W
Temperature Range	100℃-500℃
Air Volume	1-120L/min
Ambient Temperature(Max)	40℃
Temperature Stability	±2℃ (Stationary air, no load)

**De-soldering part:**

Heating Power	90W
Nozzle Temperature	200℃ - 480℃
Pump	Diaphragm
Vacuum Pressure	600mmHG
Sleeping Time Range	1-150min

- Tips See P27
- Nozzles See P39

**DESOLDERING TOOL**

**QUICK/201B**

**Features:**

- Powerful built-in vacuum pump.
- Precise temperature controlled by closed-loop sensor.
- 36V low voltage heater, fully isolated, safe and reliable.
- Digital temperature calibration.
- Specially designed suction nozzle, even melting solder can be absorbed into filter, no need of frequent maintenance, high efficiency.

**Specifications:**

Pump Power	12V/2A
Heating Power	90W
Temperature Range	200℃ -450℃
Pump	Diaphragm
Vacuum Pressure	600mmHg
Tip to Ground Potential	<2mV
Tip to Ground Resistance	<2Ω
Dimensions	105(L)×250(W)×165(H)mm
Weight	About 4.0kg

**Replaceable nozzles:**



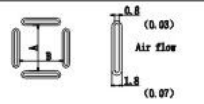
P/N	ΦA(mm)	ΦB(mm)
A1004	0.8	2.3
A1005	1.0	2.5
A1006	1.3	3.0



**Nozzles for QUICK861DW/856AX/856AE/855PX/712A/713A**

**NOZZLES**  
NOTE  
The size in Name/Specification indicates the size of IC package

mm (Inch)



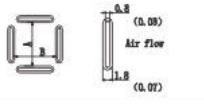
QFP SOP PLCC SOJ BGA

NK3125 QFP 10×10 (0.39×0.39)	NK3126 QFP 14×14 (0.55×0.55)	NK3127 QFP 17.5×17.5 (0.68×0.68)	NK3128 QFP 14×20 (0.55×0.78)	NK3129 QFP 28×28 (1.1×1.1)	NK3181 SOP 4.4 ×100.17×0.39	NK3182 SOP 5.6 ×180.22×0.51	NK3183 SOP 7.5 ×160.3×0.69
NK3184 SOP 7.5 ×180.3×0.7	NK3185 PLOC 17.5×17.5 (0.68×0.68) (44 Pins)	NK3186 PLOC 20×20 (0.78×0.78) (62 Pins)	NK3187 PLOC 25×25 (0.98×0.98) (68 Pins)	NK3188 PLOC 30×30 (1.18×1.18) (84 Pins)	NK3189 PLOC 12.5×7.3 (0.49×0.29) (28 Pins)	NK3140 PLOC 11.5×11.5 (0.45×0.45) (28 Pins)	NK3141 PLOC 11.5×14 (0.45×0.55) (32 Pins)
NK3180 BQFP 17×17 (0.67×0.67)	NK3181 BQFP 19×19 (0.75×0.75)	NK3182 BQFP 24×24 (0.94×0.94)	NK3183 SOJ 15×8 (0.59×0.31)	NK3184 SOJ 18×8 (0.71×0.31)	NK3185 TSOJ 13×10 (0.51×0.39)	NK3186 TSOJ 18×10 (0.71×0.39)	NK3187 TSOJ 18.5×8 (0.73×0.31)
NK3188 PLOC 9×9 (0.35×0.35) (20 Pins)	NK3189 PLOC 9.4×9.4 (0.37×0.37) (24 Pins)	NK3191 SIP 25L (0.98)	NK3192 SIP 50L (1.97)	NK3203 QFP 38×38 (1.38×1.38)	NK3214 SOJ 10×26 (0.39×1.02)	NK3215 QFP 42.5×42.5 (1.67×1.67) (0.43×0.53)	NK3267 SOP 11×21 (0.43×0.83)
NK3286 SOP 7.6×12.7 (0.3×0.5)	NK3289 SOP 13×28 (0.51×1.1)	NK3290 SOP 8.6×18 (0.34×0.71)	NK3261 QFP 20×20 (0.78×0.78)	NK3262 QFP 12×12 (0.47×0.47)	NK3263 QFP 28×40 (1.1×1.57)	NK3264 QFP 40×40 (1.57×1.57)	
NK3265 QFP 32×32 (1.26×1.26)	NK2084 Single ø4 (0.25)	NK2084 Single ø4 (0.33)	NK2127 Single ø12.7 (0.5)	NK1120 Single ø4 (0.16)	NK1124 Single ø2.5 (0.09)	NK1130 Single ø4 (0.17)	
NK2280 BGA 24×24 (0.94×0.94)	NK2281 BGA 26×26 (1.02×1.02)	NK2282 BGA 31×31 (1.22×1.22)	NK2283 BGA 38×38 (1.5×1.5)	NK2284 BGA 41×41 (1.6×1.6)	NK2285 BGA 44×44 (1.7×1.7)	NK2286 BGA 15×15 (0.6×0.6)	

**Nozzles for QUICK957/957D/700B**

**NOZZLES**  
NOTE  
The size in Name/Specification indicates the size of IC package

mm (Inch)



QFP SOP PLCC SOJ BGA

A1125 QFP 10×10 (0.39×0.39)	A1126 QFP 14×14 (0.55×0.55)	A1127 QFP 17.5×17.5 (0.68×0.68)	A1128 QFP 14×20 (0.55×0.78)	A1129 QFP 28×28 (1.1×1.1)	A1135 PLOC 17.5×17.5 (0.68×0.68) (44 Pins)	A1136 PLOC 20×20 (0.78×0.78) (62 Pins)
A1137 PLOC 25×25 (0.98×0.98) (68 Pins)	A1138 PLOC 30×30 (1.18×1.18) (84 Pins)	A1139 PLOC 12.5×7.3 (0.49×0.29) (28 Pins)	A1140 PLOC 11.5×11.5 (0.45×0.45) (28 Pins)	A1141 PLOC 11.5×14 (0.45×0.55) (32 Pins)	A1180 BQFP 17×17 (0.67×0.67)	A1181 BQFP 19×19 (0.75×0.75)
A1182 BQFP 24×24 (0.94×0.94)	A1184 SOJ 18×8 (0.71×0.31)	A1185 TSOJ 13×10 (0.51×0.39)	A1186 TSOJ 18×10 (0.71×0.39)	A1187 SOP 18.5×8 (0.73×0.31)	A1188 PLOC 9×9 (0.35×0.35) (20 Pins)	A1184 SOJ 10×26 (0.39×1.02)
A1287 SOP 11×21 (0.43×0.83)	A1288 SOP 7.6×12.7 (0.3×0.5)	A1289 SOP 13×28 (0.51×1.1)	A1290 SOP 8.6×18 (0.34×0.71)	A1261 QFP 20×20 (0.78×0.78)	A1262 QFP 12×12 (0.47×0.47)	A1183 SOJ 15×8 (0.59×0.31)
A1264 QFP 40×40 (1.57×1.57)	A1266 QFP 32×32 (1.26×1.26)	A1263 QFP 28×40 (1.1×1.57)	A1131 SOP 4.4×10 (0.17×0.39)	A1132 SOP 6.6×13 (0.22×0.51)	A1133 SOP 7.5×15 (0.3×0.6)	A1194 SOP 7.5×15 (0.3×0.7)
A1189 PLOC 34×34 (1.34×1.34)(100 Pins)	A1205 QFP 38×38 (1.38×1.38)	A1215 QFP 42.5×42.5 (1.67×1.67)	A1191 SIP 25L (0.98)	A1192 SIP 50L (1.97)	A1121 Single ø4 (0.25)	A1300 Single ø4 (0.25)
A1301 Single ø12.7 (0.5)	A1280 BGA24×24 (0.94×0.94)	A1281 BGA26×26 (1.02×1.02)	A1282 BGA31×31 (1.22×1.22)	A1283 BGA38×38 (1.5×1.5)	A1284 BGA41×41 (1.6×1.6)	A1285 BGA44×44 (1.7×1.7)
A1286 BGA15×15 (0.6×0.6)						

● Nozzles for different ICs like QFP, PLCC, and BGA etc can be customized.



## PRE-HEAT/REFLOW HOT PLATE

### QUICK/870

#### Features:

- Special heater, surface temperature distributes evenly.
- Closed-loop sensor, PID control, precise and stable temperature.
- Two switches control power supply and heating separately. Actual temperature of the plate will also display even under unheated conditions, can avoid accidents.
- Suitable for PCB preheating and other process which requires whole and even heating.

#### Specifications:

Power Consumption	800 W
Plate Area	180×200mm
Plate Material	Aluminum
Temperature Sensor	K-type thermocouple
Temperature Range	50℃ -300℃
Ambient Conditions	0-40℃
Temperature Stability	±2℃
Dimensions	280(L)×290(W)×100(H)mm
Weight	About 5.8kg



## INFRARED PREHEATER

### QUICK/854

#### Features:

- Imported infrared ceramic heater, fast heating, high efficiency, long life time.
- Built-in thermometer, can check temperature of PCB conveniently.
- Closed-loop sensor, PID control, temperature accurate and stable.
- Suitable for PCB preheating and other process which requires whole and even heating.

#### Specifications:

Power Consumption	400 W
Heating Area	130×130mm
Plate Material	Ceramic heater
Temperature Sensor	K-type thermocouple
Temperature Range	50℃ -350℃
Range of Thermometer	0-600℃
Ambient Conditions	0-40℃
Temperature Stability	±1℃
Dimensions	255(L)×200(W)×63(H)mm
Weight	About 2.5kg





**STATIC ELIMINATOR**

**QUICK/440A**

**Features:**

- Compact size, light, portable design, adjustable angle.
- Quickly neutralizes static charges.
- Large area of ionizing air.
- Speed of fan adjustable, can generate large-area ion stream.
- Stable and adjustable ion balance.
- Long lifetime magnetic leakage transformer, can protect the unit from short circuit.
- Built-in emitter cleaner, easy cleaning.

**Specifications:**

Power Consumption	30 W
Output Voltage	AC 5.6KV
Ion Balance	≤±10V
Air Volume	≤2.4m <sup>3</sup> /min
Effective Range	400×1500mm
Ozone Production	≤0.03ppm(150mm from center of air outlet)
Noise	45dB
Ambient Temperature	0°C -40°C
Dimensions	140(L)×84(W)×220(H)mm
Weight	About 2.6 Kg



**QUICK/441B**

**Specifications:**

Power Consumption	35W
Output Voltage	AC 5.6KV
Ion Balance	Adjusted ≤ ±10V before delivery(300mm from the panel)
Air Volume	≤3.3m <sup>3</sup> /min (Adjustable)
Ozone Production	≤0.03ppm (150mm from center of the air outlet)
Operating Conditions	0°C -50°C 60-70%RH
Effective Range	900×1800mm
Filter	Optional
Dimensions	390(L)×210(W)×190(H)mm
Weight	About 7.9kg



**IONIZING AIR GUN  
HIGH VOLTAGE POWER SUPPLY**

**QUICK/445D QUICK/446**

**Features:**

- Compact design, easy operation.
- Neutralize static charges rapidly, remove fine sensitive components and materials easier.
- Built-in regulator of remnant voltage, adjust ion balance quickly and effectively
- Two ionizing air guns can be connected to QUICK446 high-voltage power supply at the same time.
- Purchase separately.

**Specifications:**

Frequency of QUICK446	50Hz/60Hz
Secondary Output Voltage	AC 4.0KV
Power Consumption	20W
Dimensions	165(L)×103(W)×115(H)mm
Weight	3.8Kg

**Note:**

Ambient conditions: About 0-50°C , 60-70% RH.  
Life expectancy: About 10000 hours (based on 8h/d, 250d/y, around 5 years).

**Time for Static Neutralizing:**

Pressure	Air flow	Decay time	Noise
0.2Mpa	0.06m <sup>3</sup> /min	1.2s	≤71dB
0.4Mpa	0.12 m <sup>3</sup> /min	0.6s	≤88dB
0.6Mpa	0.18 m <sup>3</sup> /min	0.4s	≤95dB
0.7Mpa	0.20 m <sup>3</sup> /min	0.3s	≤98dB

**Note:**

Testing distance: 15cm from the outlet of the air gun.



**STATIC METER**

**QUICK/431**

**Features:**

- Four working modes available.
- Two measuring functions: a) Static measurement; b) Ion balance voltage measurement.
- Two potential measurement modes: a) Instantaneous value; b) Peak value
- Easy operation, test distance can be adjusted conveniently.
- Pocket design, easy to carry.

**Specifications:**

Power Supply	DC 9V battery
Display	LCD with cursor and range
Static Testing Range	Low range 0-±1.50KV, high range 1-±22.0KV(interchange automatically)
Ion Balance Testing Range	0 - ±220V
Standard Distance	25mm( ±0.5mm)
Testing Accuracy	±(10%+1 digit)
Standby Current	<3uA
Working Current	<15mA
Ambient Conditions	0°C-50°C, <80%RH
Case	ESD design
Dimensions	125(L)mm×70(W)mm×25(H)mm
Weight	About 200g(including battery and ion balance testing board)



**RESISTIVITY METER**

**QUICK/499**

**Features:**

- Measure the surface coefficient and grounding resistance of objects.
- Measure antistatic and insulation materials.
- Use ASTM standard D-257 parallel electrode sensing method.
- Use high precision OP-AMP amplifier and LED.
- High sensitivity, reliable to use.
- Compact design, easy to carry.

**Specifications:**

Power Supply	9V battery
Measurement Range	10 <sup>3</sup> -10 <sup>12</sup> Ω
Display Accuracy	±10%
Dimensions	70(L)*27(W)*130(H)mm
Weight	Around 140g



## DISPENSING CONTROLLER

**QUICK 982B**

### Features:

- Time of each injection controlled by timer, dispensing at regular time and quantity to ensure same glue quantity each time.
- Select right nozzles, set right injection time and pressure, each injection time and quantity can be changed.
- Can be used to inject liquid or paste, include red gel, yellow gel, epoxy resin, solder, silica gel, soldering fluid etc.
- Pedal switch and manual control modes available, manual mode is more suitable for stand-up staff.
- Various barrels and nozzles are available.

### Specifications:

Dispensing Mode	16 modes available
Dispensing Time	0.01S-99.99S adjustable
Interval Time	0.1S-9.9S adjustable
Repeat Stability	±0.05%
Inner Voltage	AC 24V
Min Injection Dosage	0.01ml
Input Air Pressure	0.25-0.7MPa(2.5-7kg)
Output Air Pressure	0.01-0.7MPa(1-7kg)
Dimensions	238(L)×150(W)×60(H)mm
Weight	About 1.7kg



## SOLDER POT

**QUICK 100-4C** **QUICK 100-6C**

### Features:

- Closed-loop sensor controls temperature, zero triggering without polluting the operating voltage.
- Adopts anti-erosion and heat resistant alloy materials; long lifetime; suitable for lead free applications.
- Small capacity design, more suitable for small and medium-sized connectors.

### Specifications:

Model	QUICK100-4C	QUICK100-6C
Power Consumption	200W	400W
Temperature Range	150℃-500℃	
Temperature Stability	±5℃	
Solder Pot	Titanium Alloy	
Solder Pot Dimensions	Φ36×40(H)mm	Φ54×38(H)mm
Weight	About 860g	About 1.34kg
Dimensions	91(L)×150(W)×75(H)mm	190(L)×115(W)×75(H)mm





## SOLDER POT

### QUICK 100-15S

#### Features:

- Closed-loop sensor controls temperature, zero triggering without polluting the operating voltage.
- Using anti-erosion and heat resistant alloy materials; long lifetime, suitable for lead free applications.
- Rapid temperature rising, accurate and stable temperature.
- LCD displays the temperature.
- Digital temperature calibration, easy and convenient to use.

#### Specifications:

Power Consumption	600W
Temperature Range	100℃ -450℃
Temperature Stability	±5℃
Solder Pot	Titanium Alloy
Solder Pot Dimensions	98(L)×121(W)×58(H)mm
Max Solder Weight	About 4.35kg
Dimensions	200(L)×320(W)×100(H)mm

