

**HVAC/R  
Service Products**



# Swiss Quality



REFCO Manufacturing (US) Inc. is pleased to introduce our new full line catalog. REFCO, headquartered in Hitzkirch (Switzerland) has long been recognized as a world leader in the manufacturing of service equipment for the refrigeration and air conditioning industry. With this full line catalog, our manufacturing facility stocking warehouse in the USA and an excellent sales representative network, we will show North America what the rest of the world already knows, that REFCO Manufacturing (US) Inc. is the highest quality and best value refrigeration and air conditioning service tool manufacturer available today.

Manfred P. Ulrich  
President / CEO

Steve Secord  
Vice-President







Vacuum Pumps	12 - 15
Recovery	16 - 19
Pressure Gauges	20 - 27
Vacuum Gauges	28 - 29
Manifolds	30 - 45
Charging Hoses	46 - 51
Leak Detection	52 - 55
Charging Scale	56 - 57
Gas Pressure Test Kit	58
Thermometers	59
Video Scope	60 - 61
Tools	62 - 71
Index	72 - 77

Copyright by REFCO Manufacturing Ltd.

REFCO is a registered trade mark in the USA and various other countries.

REFCO reserves the right to change designs, specifications and materials without notice.

# NEWS

REFCO SWISS

DIGIMON-SE patent pending  
Page 30



REF-VAC  
Page 29



HY-EX-6  
Page 66



ENVIRO  
Page 16



Business & Economy



LP-88  
Page 59



REF-LOCATOR  
Page 52



OCTA-WIRELESS  
Page 56

# Production









# Logistic







# Trade Shows Worldwide



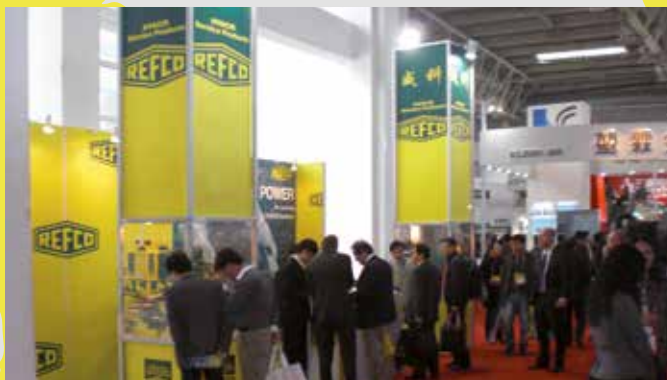
Germany, Chillventa



Italy, Mostra Convegno



UK, RAC



China, China Refrigeration





Mexico, AHR Expo



USA, ASHRAE Expo

# Vacuum Pumps

## Features for all RL-Vacuum Pumps

- Built specifically for the AC/R Industry
- Latest technology allows extremely compact size
- High-end materials result in low weight but top quality
- Compact, practical, long lifetime
- Sturdy ergonomic handle stays cool to the touch
- Large, easily accessible oil fill port to prevent spillage when filling
- Sight glass for easy viewing of the oil level
- Two-stage rotary vane pump in state of the art design for greater efficiency
- Easy to start, compact motor operates efficiently
- Internal oil pump with unique device to prevent any oil back suction
- Built-in on/off switch to prevent breakage or accidental shut off
- Gas ballast valve feature to help keep the oil clean and to reduce water vapor in the oil compartment
- Easily field replaceable one piece cartridge allows for rebuild without special tooling
- Special designed oil exhaust filter to reduce oil mist
- Quiet operation
- Swiss Quality product manufactured under ISO 9001

### RL-2 1.35 cfm

- Includes DV-44 vacuum pump oil (0.5 pt. / 250 ml)

### RL-8 6.4 cfm

- Large oil drain valve located at the front bottom of oil pan to allow for fast and easy oil change
- Modern metal, rugged pump design with high-tech plastic housing to absorb shocks
- Ergonomical design for even easier handling
- Lower point of gravity for higher stability
- Both ¼" and ⅜" SAE inlet connections allow for flexibility of connections
- Integrated blank off ball-valve to isolate pump from system
- Includes DV-45 vacuum pump oil (1pt. / 500 ml)

RL-2



RL-8

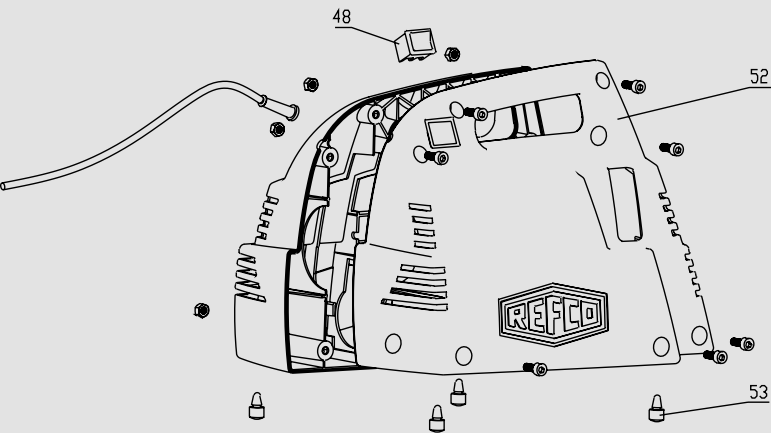


#### Technical Data

	RL-2	RL-8
Free air displacement:	1.35 cfm	6.4 cfm
Number of stages:	2	2
Microns:	15	15
Intake threads:	¼" SAE Flare	¼" and ⅜" SAE Flare with integrated ball valve
Motor:	⅙ horsepower, 2700 rpm	½ horsepower, 3300 rpm
Voltage:	115 Volt, 60 Hz	115 Volt, 60 Hz
Power Cord Length:	78"	78"
Oil Capacity:	0.25 pt.	1 pt.
Recommended oil change:	Every 20 working hours	Every 20 working hours
Dimensions:	10.5 x 6.5 x 7.5 inch	14 x 8.6 x 9.8 inch
Weight:	8.3 lbs	26 lbs
<b>Part No.</b>	<b>4661601</b>	<b>4507356</b>



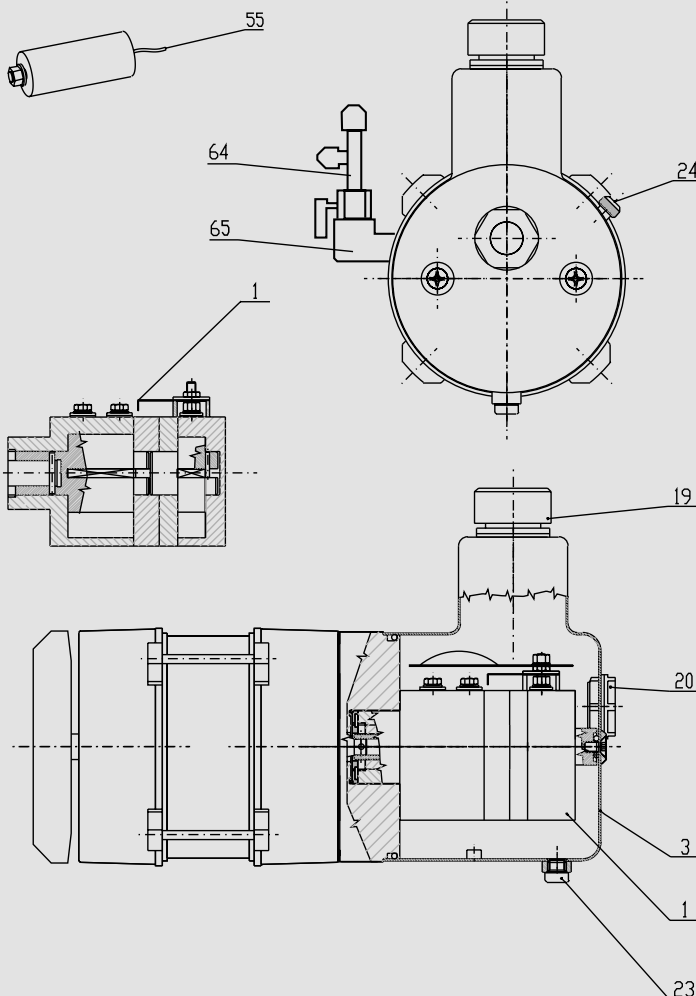
## Spare Parts for RL-2, RL-4 and RL-8



### Spare Parts for RL-2

Pos.	Designation	Description	Part No.
3	<b>RL-2-3000</b>	Oil basin complete with gasket	<b>4661589</b>
20	<b>RL-2-3011</b>	Oil sight glass with gasket + counter nut	<b>4661597</b>
19	<b>RL-2/4-303</b>	Oil mist filter with gasket	<b>4495471</b>
24	<b>RL-2/4-3060</b>	Gas ballast valve complete	<b>4661423</b>
53	<b>RL-8-4071</b>	Rubber pad set (4 pieces)	<b>4507631</b>
55	<b>RL-2-406</b>	Capacitor	<b>4661040</b>
48	<b>RL-2/4/8-415</b>	Switch	<b>4496770</b>
52	<b>RL-2-4000</b>	Housing complete	<b>4661538</b>
1	<b>RL-2-2A</b>	Vacuum stage complete	<b>4661482</b>
64	<b>RL-2-64</b>	Intake port w/cap	<b>4668028</b>

### Spare Parts for RL-4



Pos.	Designation	Description	Part No.
3	<b>RL-4-3000</b>	Oil basin complete with gasket	<b>4507674</b>
20	<b>RL-4-3011</b>	Oil sight glass with gasket + counter nut	<b>4507682</b>
23	<b>RL-4/8-310</b>	Oil drain plug with gasket	<b>4496761</b>
19	<b>RL-2/4-303</b>	Oil mist filter with gasket	<b>4495471</b>
24	<b>RL-2/4-3060</b>	Gas ballast valve complete	<b>4661423</b>
53	<b>RL-8-4071</b>	Rubber pad set (4 pieces)	<b>4507631</b>
55	<b>RL-4-406</b>	Capacitor	<b>4505051</b>
48	<b>RL-2/4/8-415</b>	Switch	<b>4496770</b>
52	<b>RL-4-4000</b>	Housing complete	<b>4661474</b>
1	<b>RL-4-2A</b>	Vacuum stage complete	<b>4661954</b>
64	<b>RL-4-64</b>	Intake port w/caps	<b>4668036</b>
65	<b>RL-4/8-65</b>	Intake elbow	<b>4668053</b>

### Spare Parts for RL-8

Pos.	Designation	Description	Part No.
3	<b>RL-8-3000</b>	Oil basin complete with gasket	<b>4507607</b>
20	<b>RL-8-3011</b>	Oil sight glass with gasket + counter nut	<b>4507615</b>
23	<b>RL-4/8-310</b>	Oil drain plug with gasket	<b>4496761</b>
19	<b>RL-8-303</b>	Oil mist filter with gasket	<b>4507445</b>
24	<b>RL-8-3060</b>	Gas ballast valve complete	<b>4507623</b>
53	<b>RL-8-4071</b>	Rubber pad set (4 pieces)	<b>4507631</b>
55	<b>RL-8-426</b>	Capacitor set (2 pieces)	<b>4508203</b>
48	<b>RL-2/4/8-415</b>	Switch	<b>4496770</b>
52	<b>RL-8-4000</b>	Housing complete	<b>4507640</b>
1	<b>RL-8-2A</b>	Vacuum stage complete	<b>4507658</b>
64	<b>RL-8-64</b>	Intake port w/caps, handle, screw	<b>4668045</b>
65	<b>RL-4/8-65</b>	Intake elbow	<b>4668053</b>

# Vacuum Pumps

## ECO Series Vacuum Pumps

- Designed specifically for HVAC/R Service
- Two stage rotary vane pump design
- Compact design with aluminum housing and easy to grip carrying handle
- Very quiet operation
- High pumping capacity reduces evacuation time
- Carrying handle stays cool to the touch
- Easy to start
- Both 1/4" and 3/8" SAE flare inlet connections allow for flexibility of connections
- Vacuum pump oil included
- Value priced but still manufactured to the highest quality and performance specifications



ECO-5

**NEW: DUAL VOLTAGE**

Technical Data	ECO-5	ECO-5-DV	ECO-9
Free air displacement:	5.0 cfm	5.0 cfm	9.0 cfm
Number of stages:	2	2	2
Microns:	15	15	15
Intake threads:	1/4" and 3/8" SAE Flare	1/4" and 3/8" SAE Flare	1/4" and 3/8" SAE Flare
Motor:	1/2 horsepower	1/2 horsepower	1 horsepower
Voltage:	115 Volt, 60 Hz	115/230 Volt, 60 Hz	115 Volt, 60 Hz
Power cord length:	78"	78"	78"
Oil capacity:	9.5 oz / 0.6 pt.	9.5 oz / 0.6 pt.	20 oz / 1.25 pt.
Dimensions:	14 x 5 x 10 inch	14 x 5 x 10 inch	16 x 6 x 11 inch
Weight:	24 lbs	28 lbs	37 lbs
<b>Part No.</b>	<b>4667685</b>	<b>4682692</b>	<b>4669661</b>





## Spare Parts for ECO Series

Pos.	Designation	Description	Part No.
1	<b>ECO-3/5/9-1</b>	Rubber feet	<b>4667757</b>
2	<b>ECO-3/5/9-3</b>	Oil drain plug	<b>4667774</b>
3	<b>ECO-3/5/9-4</b>	Handle	<b>4667782</b>
4	<b>ECO-3/5/9-5</b>	Oil fill cap (yellow)	<b>4667790</b>
5	<b>ECO-3/5/9-8</b>	Protection cap	<b>4667820</b>
5	<b>ECO-3/5-20N</b>	Exhaust cap for ECO-3/5	<b>4684580</b>
5	<b>ECO-9-20</b>	Exhaust cap for ECO-9	<b>4684604</b>
6	<b>NFT5-4-K-Green</b>	Seal flare cap 1/4" for ECO-3/5/9	<b>4676110</b>
7	<b>NFT5-6-K-Green</b>	Seal flare cap 3/8" for ECO-5/9	<b>4676128</b>
8	<b>ECO-3-9</b>	On/Off switch	<b>4678911</b>
8	<b>ECO-5-9</b>	On/Off switch	<b>4678929</b>
8	<b>ECO-9-9</b>	On/Off switch	<b>4678937</b>
9	<b>ECO-3-10</b>	Fan cover for ECO-3	<b>4678946</b>
9	<b>ECO-5-10</b>	Fan cover for ECO-5	<b>4678954</b>
9	<b>ECO-9-10</b>	Fan cover for ECO-9	<b>4678962</b>
10	<b>ECO-3-11</b>	Fan blades for ECO-3	<b>4678970</b>
10	<b>ECO-5-11</b>	Fan blades for ECO-5	<b>4678988</b>
10	<b>ECO-9-11</b>	Fan blades for ECO-9	<b>4678996</b>



DV-44/45/46

## Vacuum Pump Oil

for RL-2, RL-4, RL-8, ECO Series

- REFCO Vacuum pump oil is specifically manufactured to allow your vacuum pump to operate efficiently in different types of operating conditions

Designation	Description	Part No.
<b>DV-44</b>	0.5 pint (250 ml) Vacuum pump oil	<b>4495340</b>
<b>DV-45</b>	1 pint (500 ml) Vacuum pump oil	<b>4495358</b>
<b>DV-46</b>	1 quart (1000 ml) Vacuum pump oil	<b>4495366</b>

# Recovery

## ENVIRO

This state of the art, one-knob operation recovery machine allows for recovery of all popular CFC, HCFC and HFC refrigerants including R410A. The oil-less, aircooled compressor assures efficient and fast operation, making irritating oil changes unnecessary. In comparison to other compressors, this unit runs extremely quiet and without vibrations. Oil-filled gauges allow for an even easier reading. The compact and ergonomic design as well as the rugged construction provide maximum protection during transport and usage. The ENVIRO is equipped with a self-purging mode as well as a built in filter which is easy to clean and replace.

### Technical Data:

- Compressor:  $\frac{3}{4}$  hp, oil-less, maintenance free
- Power supply: 115 V, 60 Hz
- Gauge: Oil-filled
- Weight: 32 lbs
- Dimensions: 16 x 10 x 14 in
- Certified to AHRI 740

### Recovery Rate:

- Vapour rate: up to max. 0.80 lbs/min
- Liquid rate: up to 5 lbs/min
- Push-pull up to max. 14 lbs/min

Part No 4684593



ENVIRO





## ENVIRO DUO

This high performance, state of the art, one-knob operation recovery machine allows for maximum recovery of all popular CFC, HCFC and HFC refrigerants including R410A. The oil-less, air-cooled, 2-piston compressor makes an impact due to its impressive performance. Oil-filled gauges allow for easier reading. Even in close proximity, the noise level during operation is low in comparison to common compressors. The compact and ergonomic design as well as the rugged construction provide maximum protection from transport and usage. The ENVIRO-DUO is equipped with an 80% overfill-protection. Additionally the unit is equipped with a self-cleaning mode as well as a built in filter which is easy to clean and replace.

### Technical Data:

- Compressor: 1 hp, oil-less, maintenance free
- Power supply: 115 V, 60 Hz
- Gauge: Oil-filled
- Weight: 35 lbs
- Dimensions: 16 x 10 x 14 in
- Certified to AHRI 740

### Recovery Rate:

- Vapour rate: up to max. 1.2 lbs/min
- Liquid rate: up to max. 7.7 lbs/min
- Push-pull rate: up to max. 21 lbs/min

### Part No 4684605

**Two Piston  
Recovery  
Machine**



**ENVIRO DUO**

# Recovery

## POWERMAX

### Refrigerant Recovery Machine

The POWERMAX is a lightweight 22 lbs recovery system with the 1 horsepower oil-less Wizard compressor.

No other recovery system on the market is this light with a 1 horsepower compressor. The unit has a durable plastic case design which recovers all high pressure refrigerants including R12, R134a, R22, R401, R402, R404, R406, R407, R409, R410A, R411, R412, R500, R502, R507, R509 as well as many other blends.

#### Features

- 1 horsepower oil-less compressor
- Easy two-hose refrigerant recovery system
- Two connection systems provides automatic, straight through, liquid vapor operation
- Self-evacuation feature
- Recovery rates up to 5 lbs/minute liquid and ½ lbs/minute vapor
- Weighs only 22 lbs
- Durable plastic case, well balanced and portable

#### Additional Features

- Made in the USA
- High pressure safety switch
- Re-settable circuit breaker
- Over-sized condenser
- Large air cooled 7 inch fan
- Cylinder overfill protection
- Connection fittings point away from operator
- Easy to operate, oversized control knobs
- 2 year warranty
- UL certified to AHRI 740

**Part No. 4663239**



**POWERMAX**

## Spare Parts POWERMAX

#### Recovery Ratings POWERMAX:

Refrigerant	Push/Pull Liquid (lbs/min)	Standard Liquid (lbs/min)	Standard Vapor (lbs/min)
R-12	10.25	3.75	.41
R-22	11.97	5.00	.53
R-502	10.70	4.20	.42
R134a	10.45	4.10	.41
R-410A	17.97	4.56	.48

Designation	Description	Part No.
<b>ALF-032</b>	Inlet filter	<b>4670414</b>
<b>2277</b>	Tune-up kit	<b>4674079</b>
<b>400-15</b>	Circuit breaker (12-Amp)	<b>4671011</b>
<b>1997-1</b>	Safety cable	<b>4670406</b>
<b>1997-10</b>	Jumper plug for safety cable (2 pieces)	<b>4674087</b>
<b>2070-10</b>	Power cord	<b>4671526</b>
<b>3000-60</b>	Drive belt	<b>4670562</b>
<b>3000-72</b>	Valve plate w/gaskets	<b>4672441</b>
<b>3000-73</b>	Gasket kit	<b>4674096</b>
<b>AA-30</b>	30# Recovery tank	<b>4674681</b>
<b>AA-50</b>	50# Recovery tank	<b>4674699</b>
<b>CONTROL-KNOB</b>	Control knob rebuild	<b>4674478</b>



## OZ-4000

### Refrigerant Recovery Machine

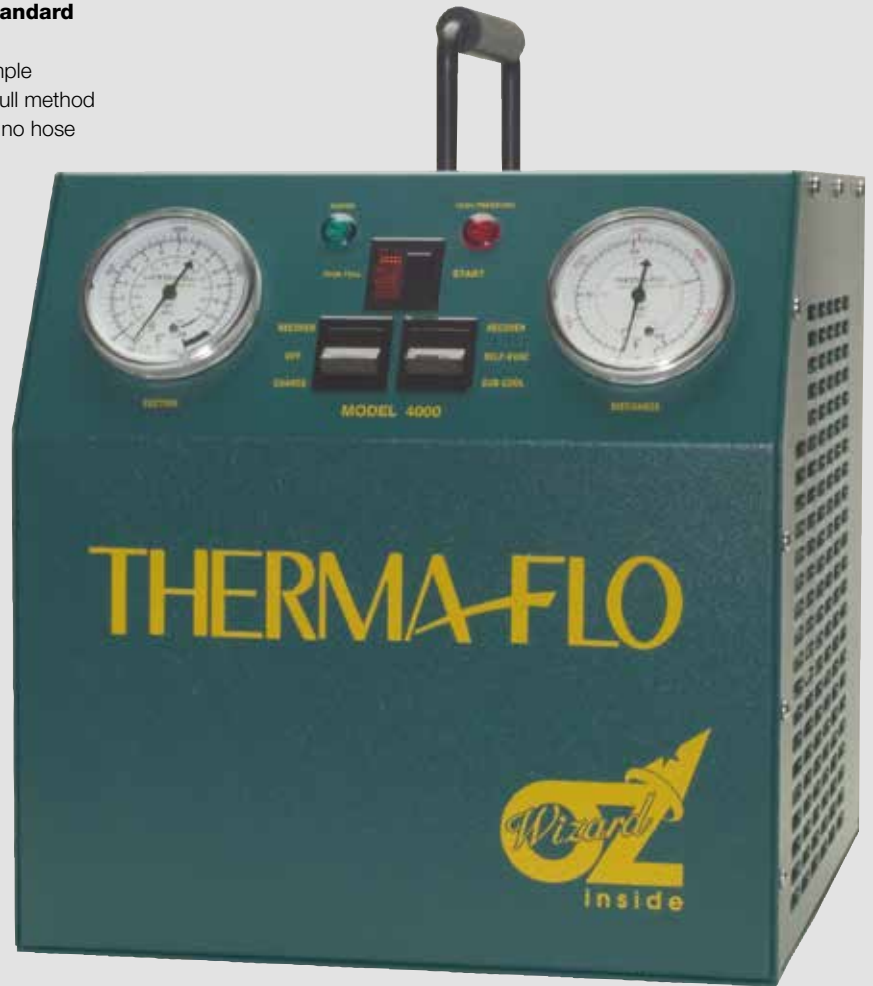
#### The machine that sets the HVAC/R Industry Standard

Due to the patented solenoid system design and a simple 4 hose hook up, the OZ-4000 can go from the push pull method (17 lbs/minute) to ½ lbs/minute in vapor recovery with no hose changes and without shutting off the unit.

#### Features

- 1 horsepower oil-less Wizard compressor inside
- Fully automatic
- Patented automatic subcool feature
- Lightweight 29 lbs
- Signal lights to indicate liquid to vapor recovery modes and high pressure shut-off
- Safety shut-off to prevent tank overflow
- Over-sized condenser
- Re-settable circuit breaker
- Self-evacuation feature
- Shipped with safety cable and 3 - 72" hoses
- Self-discriminates between liquid and vapor, routing the liquid around the compressor for longer life and maximum capacity
- 2 year warranty
- Over 150'000 units sold since 1992

**Part No. 4663247**



**OZ-4000**

### Spare Parts OZ-4000

#### Recovery Ratings OZ-4000:

Refrigerant	Push/Pull Liquid (lbs/min)	Standard Liquid (lbs/min)	Standard Vapor (lbs/min)
R-12	10.00	3.24	.25
R-22	10.25	3.50	.40
R-502	10.50	4.09	.46
R134a	10.00	3.42	.25
R-410A	10.25	3.50	.35

Designation	Description	Part No.
<b>ALF-032</b>	Inlet filter	<b>4670414</b>
<b>2277</b>	Tune-up kit	<b>4674079</b>
<b>400-15</b>	Circuit breaker (12-Amp)	<b>4671011</b>
<b>1997-1</b>	Safety cable	<b>4670406</b>
<b>1997-10</b>	Jumper plug for safety cable (2 pieces)	<b>4674087</b>
<b>2070-10</b>	Power cord	<b>4671526</b>
<b>3000-9-1</b>	Ball valve	<b>4671801</b>
<b>3000-60</b>	Drive belt	<b>4670562</b>
<b>3000-72</b>	Valve plate w/gaskets	<b>4672441</b>
<b>3000-73</b>	Gasket kit	<b>4674096</b>
<b>AA-30</b>	30# Recovery tank	<b>4674681</b>
<b>AA-50</b>	50# Recovery tank	<b>4674699</b>

# Pressure Gauges

## REFCO Gauges General Information

### Class 1 vs. Class 1.6 vs. Class 2 accuracy gauges

Class 1 gauges are accurate within  $\pm 1$  percent reading all the way around the gauge dial. These gauges are the most accurate offered by REFCO.

Class 1.6 gauges are accurate within  $\pm 1.6$  percent reading all the way around the gauge dial. These gauges are also very accurate and are the standard accuracy gauge offered by REFCO.

Class 2.0 gauges are accurate within  $\pm 2$  percent over the first  $\frac{1}{3}$  of the gauge dial,  $\pm 3$  percent over the next  $\frac{1}{3}$  of the gauge dial and then  $\pm 2$  percent over the last  $\frac{1}{3}$  of the gauge dial. This is commonly called 2-3-2 accuracy. These gauges are least accurate where most of the readings are taken.

**REFCO uses as standard on manifolds Class 1.6 accuracy gauges and on higher end manifolds Class 1.0 accuracy gauges. Most competitors use as standard the Class 2 or 2-3-2 accuracy gauges. This makes REFCO manifolds more accurate. REFCO DOES NOT USE ANY CLASS 2 or 2-3-2 accuracy GAUGES ON ITS MANIFOLDS. Unlike many service tool suppliers REFCO manufactures their own gauges.**

**SWISS  
movement**



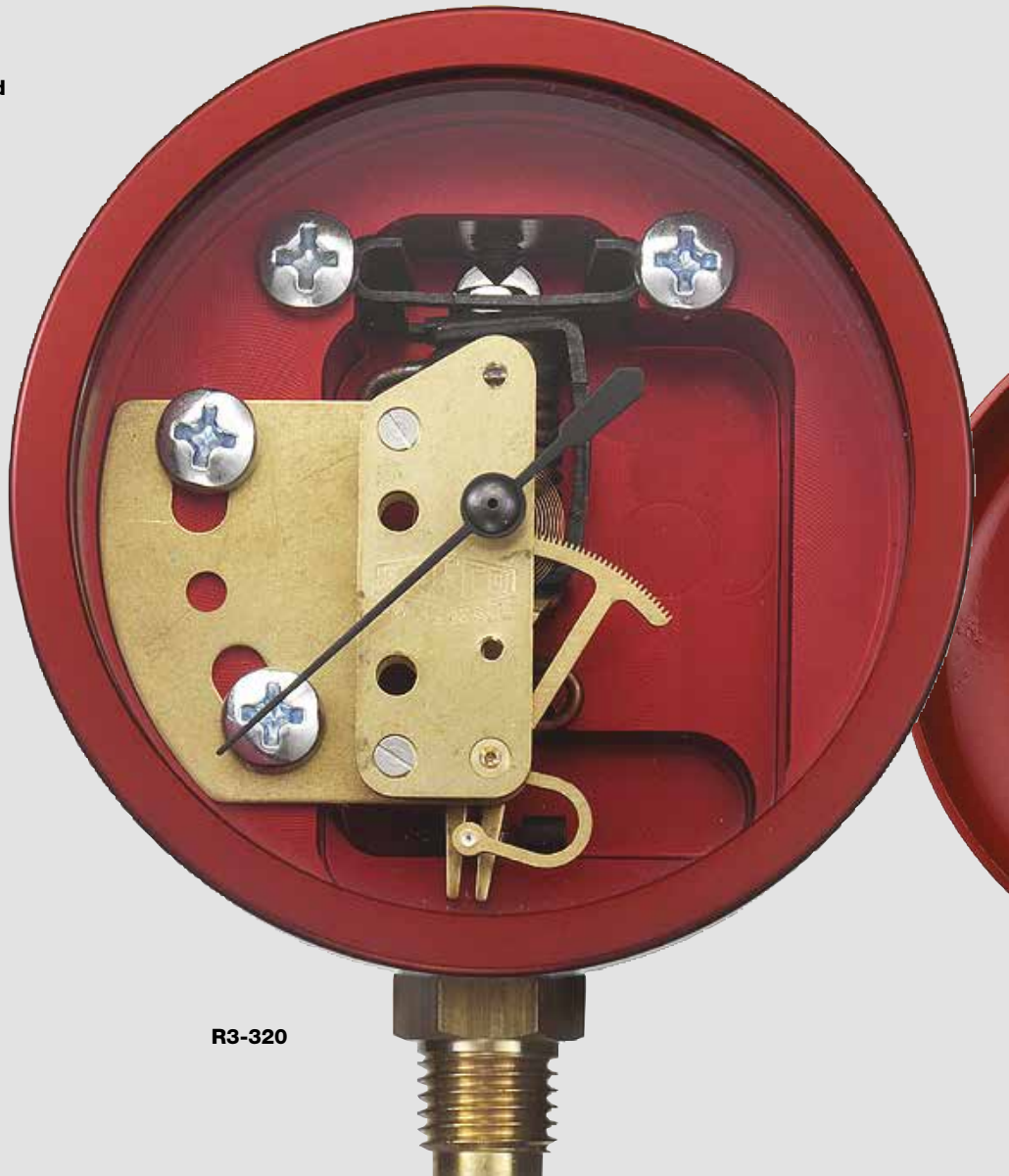
## Standard Refrigerant Temperature Scales:

R12	= R12/R22/R502
R22	= R22/R134a/R404A
R32	= R32/R410A
R134a	= R134a/R404A/R507
R410A	= R410A
R410A-FG	= R410A/R404A/R22

## Standard Pressure Scales:

R12, R22 and R134a gauges:  
Low side 30" vacuum up to 120 psi, retard protection to 350 psi  
High side 0 psi up to 500 psi

R410A gauges:  
Low side 30" vacuum up to 500 psi  
High side 0 psi up to 800 psi



R3-320





## Standard Features of REFCO KM2 and M2 Series Class 1.6

### Bourdon Tube Gauges are:

- Class 1.6 accuracy
- 2 3/4" or 68 mm outside diameter
- Zero point adjustable
- Pulse free
- Color-coded for pressure and compound
- Standard 1/8" NPT bottom connection
- All brass internal parts, no plastic

## Standard Features of REFCO GR Series, Glycerine, Class 1.6

### Bourdon Tube Gauges are:

- Class 1.6 accuracy
- 2 3/4" or 68 mm outside diameter
- Glycerine-filled
- Standard 1/8" NPT bottom connection
- All brass internal parts, no plastic

Same features for GR Series but with:

- Zero point adjustable
- Color-coded for pressure and compound

## Standard Features of REFCO M5 Series Class 1.0

### Bourdon Tube Gauges are:

- Class 1 accuracy
- 3 1/4" or 80 mm outside diameter
- Easy to read
- Retard protection
- Zero point adjustable
- Pulse free
- All brass internal parts, no plastic

## Standard Features of REFCO R3 and R5 Class 1.0

### Bellow Gauges are:

- ◆ Bellow type gauges are extremely over-pressure resistant. A bellow type gauge can withstand up to 2.5 times over-pressurization of the printed pressure scale without damage to the gauge. A bourdon tube gauge cannot withstand this type of over-pressurization
- ◆ Class 1.0 accuracy
- ◆ Available in 2 3/4" (68 mm) or 3 1/4" (80 mm), both large and easy to read. PM series only available in 3" (76 mm)
- ◆ Zero point adjustable
- ◆ Silicone oil-filled, except PM series
- ◆ Aluminum anodized body for R3 and R5 series
- ◆ PM series is made with a fiberglass body
- ◆ Hermetically sealed, no oil fill plug on the top of the gauge to allow seepage or leakage for R3 and R5 series
- ◆ Color-coded for pressure and compound
- ◆ Standard 1/8" NPT bottom connection
- ◆ All brass or steel internal parts, no plastic
- ◆ Relief device on back of gauge in case of extreme over-pressurization for R3 and R5 series

## Pressure and Vacuum Gauges

### General Information:

Standard threaded connection - 1/8" NPT

F = pressure scale on gauge in psi and temperature scale in degrees F

### Temperature scales:

- R12 = R12/R22/R502**
- R22 = R22/R134a/R404A**
- R32 = R32/R410A**
- R134a = R134a/R404A/R507**
- R410A = R410A**
- R410A-FG = R410A/R404A/R22**

Pressure scales:

R12, R22, R134a gauges:

Low side 30" vacuum up to 120 psi, retard to 350 psi

High side 0 psi up to 500 psi

R410A:

Low side 30" vacuum up to 500 psi

High side 0 psi up to 800 psi



**SWISS  
movement**

**M2-500**

# Pressure Gauges

## Standard Bourdon Tube Pressure Gauges

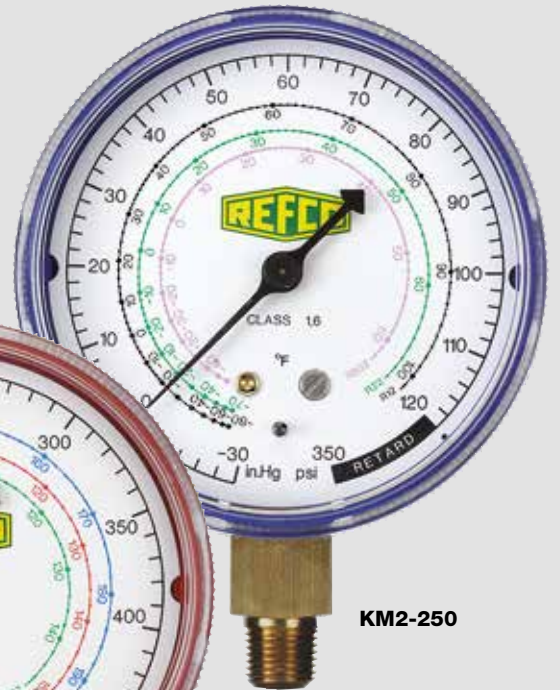
### KM2 standard series

- Class 1.6 accuracy, bourdon tube design
- 2 3/4" (68 mm) outside diameter, easy to read
- Zero point adjustable
- Pulse free
- Color coded for easy high and low side identification
- Composite housing
- Standard 1/8" NPT connection
- Gauge internals are all brass, no plastic pieces

Designation	Description	Part No.
<b>KM2-250-F-R12</b>	R12/R22/R502 scales, compound	<b>4530152</b>
<b>KM2-500-F-R12</b>	R12/R22/R502 scales, pressure	<b>4530161</b>
<b>KM2-250-F-R22</b>	R22/R134a/R404A scales, compound	<b>4505417</b>
<b>KM2-500-F-R22</b>	R22/R134a/R404A scales, pressure	<b>4505425</b>
<b>KM2-250-F-R134a</b>	R134a/R404A/R507 scales, compound	<b>4530179</b>
<b>KM2-500-F-R134a</b>	R134a/R404A/R507 scales, pressure	<b>4530187</b>
<b>KM2-001</b>	Replacement lens cover	<b>4503350</b>



KM2-250



KM2-250

**SWISS  
movement**



KM2-500





M2-500



M2-250



M2-500

**SWISS**  
movement

## M2 Premium Series

- Standard all metal housing and easy to read through lens cover
- Class 1.6 accuracy, bourdon tube design
- 2 3/4" (68 mm) outside diameter, easy to read
- Zero point adjustable
- Pulse free
- Color-coded for easy high and low side identification
- Standard 1/8" NPT connections
- Gauge internals are all brass, no plastic pieces

Designation	Description	Part No.
M2-250-F-R12	R12/R22/R502 scales, compound	7829168
M2-500-F-R12	R12/R22/R502 scales, pressure	7829567
M2-250-F-R22	R22/R134a/R404A scales, compound	7635083
M2-500-F-R22	R22/R134a/R404A scales, pressure	7635147
M2-250-F-R410A	R410A scale, compound	7829982
M2-500-F-R410A	R410A scale, pressure	7830000
M2-250-F-R32	R410/R32 scales, compound	4687453
M2-500-F-R32	R410/R32 scales, pressure	4687454
M2-250-F-R410A-FG	R410A/R404A/R22 scales, compound	7218188
M2-500-F-R410A-FG	R410A/R404A/R22 scales, pressure	7218358
M2-001	Replacement lens cover	1212648
M2-GS	Gauge protector set	4677451



M2-GS



Zero point adjustment

# Pressure Gauges

## Bourdon Tube Gauges

### Glycerin Filled and dry Execution

## GR Series

### Glycerin Filled Gauges

- Class 1.6, glycerin filled, bourdon tube gauge
- Zero point adjustable
- Color-coded for easy high and low side identification
- 2 ¼" (68 mm) outside diameter, easy to read
- Pulse free
- Standard ½" NPT connection

Designation	Description	Part No.
<b>GR-220-F-R12</b>	R12/R22/R502 scales, glycerin-filled, compound	<b>7714013</b>
<b>GR-320-F-R12</b>	R12/R22/R502 scales, glycerin-filled, pressure	<b>7714098</b>
<b>GR-220-F-R134a</b>	R134a/R404A/R507 scales, glycerin-filled, compound	<b>7714064</b>
<b>GR-320-F-R134a</b>	R134a/R404A/R507 scales, glycerin-filled, pressure	<b>7714102</b>



GR-320



GR-220

**SWISS**  
movement

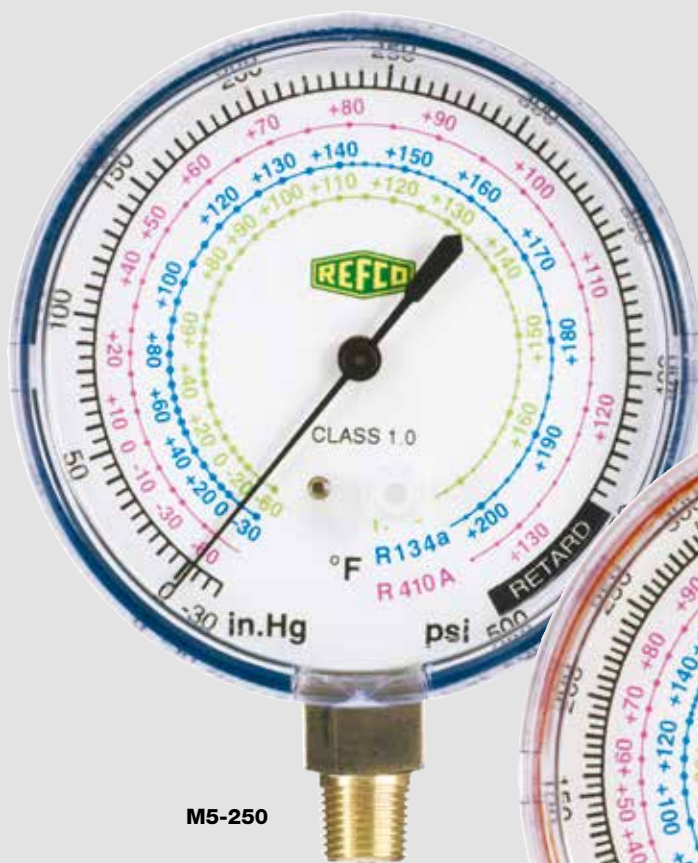


## M5 Series

### Large Bourdon Tube Gauges

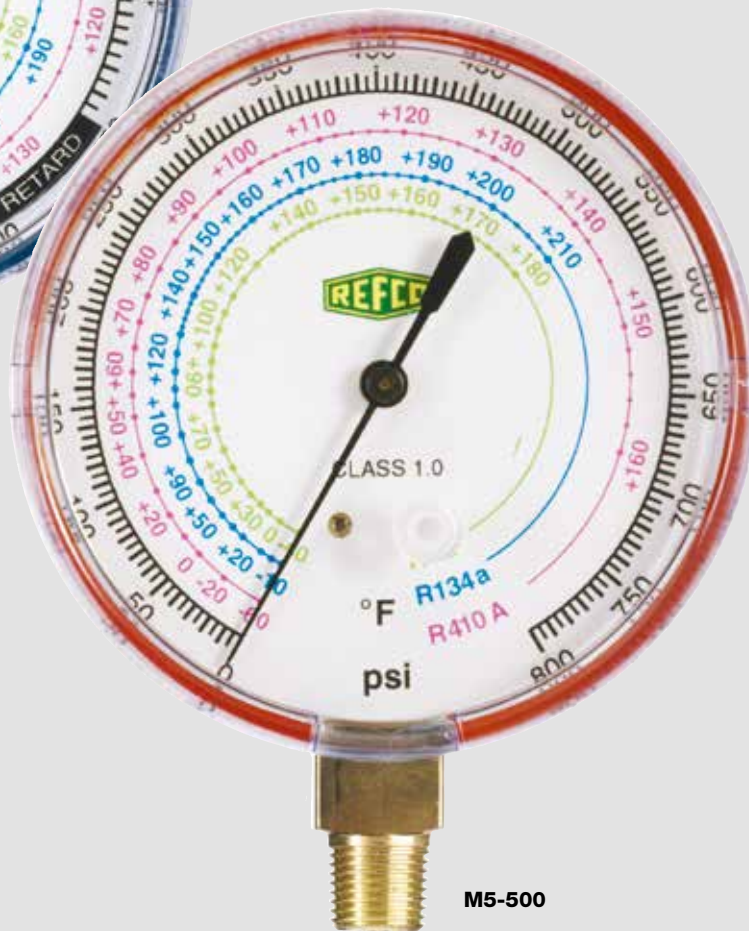
- 3 1/4" (80 mm) outside diameter, easy to read
- Bourdon tube, Class 1.0 accuracy
- Retard protection
- Zero point adjustable
- Metal housing
- Pulse free

Designation	Description	Part No.
<b>M5-250-F-R410A-FG</b>	R410A/R134a/R22 scales, compound	<b>4675288</b>
<b>M5-500-F-R410A-FG</b>	R410A/R134a/R22 scales, pressure	<b>4675296</b>



M5-250

**SWISS**  
movement



M5-500



# Pressure Gauges

## Bellow Type, Class 1.0 Gauges, Oil Filled and Dry Execution

Fundamentals of a Bellow Gauge – The best gauge you'll ever have.

A metal bellow type gauge is very sensitive and therefore much more accurate than a standard bourdon tube gauge.

The main benefit of a bellow type gauge is that it is extremely accurate and highly over-pressure resistant.

The bellow gauge is accurate within 1% around the gauge face and can withstand up to 2.5 times over-pressurization without damage to the gauge.

A bourdon tube gauge would never withstand this type of over-pressurization.



R3-320



## R3 Series

### Oil Filled Bellow Type Gauges

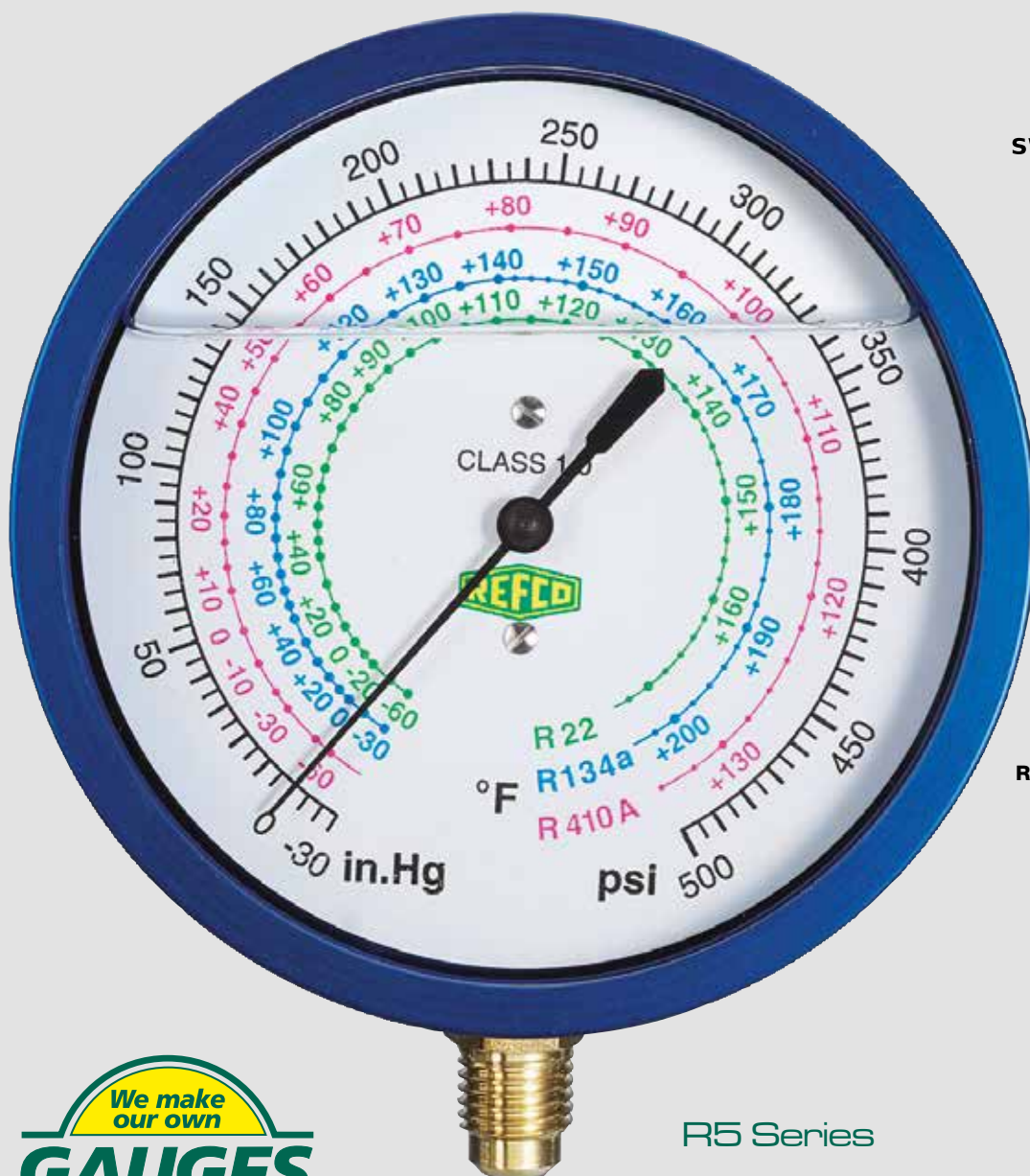
- Bellow type, Class 1.0 accuracy, oil filled gauge
- Hermetically sealed, no oil fill plug on the top of gauge to allow leakage
- Highly over-pressure resistant, can withstand up to 2.5 times the printed scale
- Zero point adjustable
- All anodized aluminum body, no plastic
- Color-coded for easy identification of high and low side
- 2 3/4" (68 mm) outside diameter, easy to read
- Pulse free

Designation	Description	Part No.
R3-220-F-R12	R12/R22/R502 scales, oil-filled, compound	9884479
R3-320-F-R12	R12/R22/R502 scales, oil-filled, pressure	9884480
R3-220-F-R22	R22/R134a/R404A scales, oil-filled, compound	4667472
R3-320-F-R22	R22/R134a/R404A scales, oil-filled, pressure	4667480
R3-220-F-R134a	R134a/R404A/R507 scales, oil-filled, compound	9884481
R3-320-F-R134a	R134a/R404A/R507 scales, oil-filled, pressure	9884482
R3-220-F-R410A-FG	R410A/R404A/R22 scales, oil-filled, compound	4662399
R3-320-F-R410A-FG	R410A/R404A/R22 scales, oil-filled, pressure	4662403



Zero point adjustment





R5-220



## R5 Series Oil Filled Bellow Type Gauges

- All of the R3 features except it has a larger outside diameter of 3 1/4" (80 mm) for an extra easy to read gauge face

Designation	Description	Part No.
<b>R5-220-F-R12</b>	R12/R22/R502 scales, oil-filled, compound	<b>4493916</b>
<b>R5-320-F-R12</b>	R12/R22/R502 scales, oil-filled, pressure	<b>4493924</b>
<b>R5-220-F-R410A-FG</b>	R410A/R404A/R22 scales, oil-filled, compound	<b>4675300</b>
<b>R5-320-F-R410A-FG</b>	R410A/R404A/R22 scales, oil-filled, pressure	<b>4675318</b>

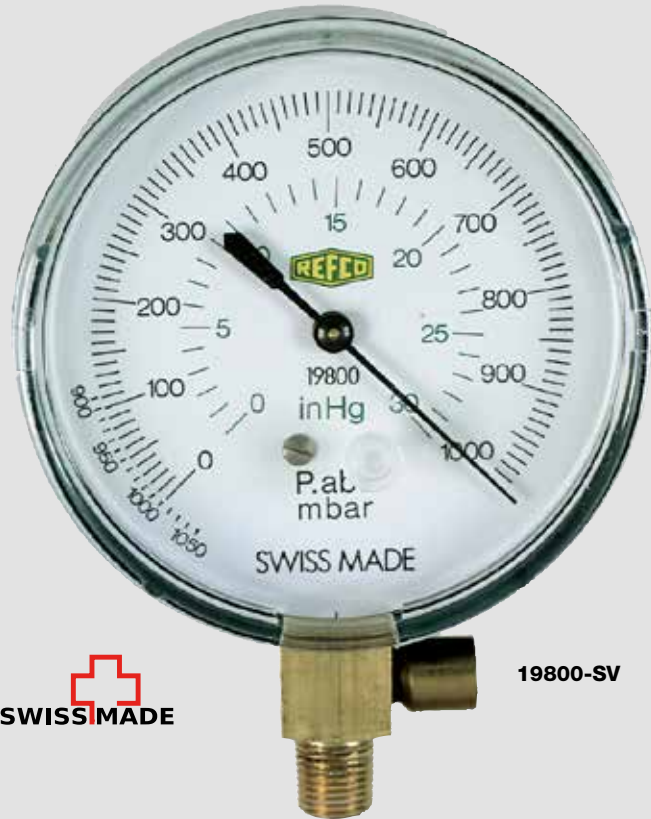
# Vacuum Gauges

## Mechanical Vacuum Gauges

### 19800-SV

- Full range Mechanical Vacuum gauge
- Complete with replaceable safety relief device if positive pressure is introduced into gauge
- 3 ¼" outside diameter for easy to read, more accurate reading than a compound gauge
- ½" NPT bottom connection
- Zero point adjustable
- Scales in 1000 - 0 mbar and 30" - 0 Hg

Designation	Description	Part No.
19800-SV	Mechanical Vacuum gauge with replaceable safety relief device	9882473



19800-SV



19801

### 19801

- Full range Mechanical Vacuum gauge with pointer that indicates maximum vacuum reading attained during a given operation
- Readjustable after each use by a thumbscrew
- Complete with replaceable safety relief device if positive pressure is introduced into gauge
- 4" outside diameter for easy reading, more accurate reading than a compound gauge
- ½" G bottom connection
- Scale in 1000 - 0 mbar
- Zero point adjustable

Designation	Description	Part No.
19801	Mechanical Vacuum gauge with maximum pressure indicator pointer and replaceable safety relief device	9882474

## Spare Parts

### for Mechanical Vacuum Gauges

Designation	Description	Part No.
19803/2	Adapter ½" G female x ¼" SAE, with integrated gasket, packaged 2 per	4687098
19805-12/2	Replaceable safety valve for 19800-SV and 19801, packaged 2 per	4687078



19803



19805-12



## Electronic Vacuum Gauge

### REF-VAC

Latest measuring instrument for continuous reading of measured values during the evacuation process out in the field as well as in the laboratory. Thanks to the large LCD display, the changing data can always be read easily. The vacuum gauge can be set to the main vacuum units such as microns, mbar, Pa, Torr, mTorr, psi, and inHG. It can accurately display the vacuum from 18'000 - 0 microns. The unit also has a practical hook for hanging and conforms to the IP classification IP 54.

- Sensor Type: Thermistor
- Vacuum Range: 0-18000 microns
- Display-Resolution: 0-20: 0.2 micron  
21-200: 1 micron  
201-500: 5 micron
- Units: microns, mbar, Pa, Torr, mTorr, psi, inHG
- Accuracy: +/-10% - 100 microns  
+/-6% - 101-750 microns
- Connector Type: Standard male 1/4 inch SAE
- Operating Temp.: 32°F-104°F
- Auto Shutoff: After 10 min. if vacuum value greater than 18000 microns  
After 30 min. if vacuum value less than 18000 microns
- Battery Life: 40 hours
- Overpressure: Max. 500 psi
- Hanging hook included

**Part No 4686712**

Designation	Description	Part No.
<b>T6-4/5</b>	1/4" SAE x 1/4" SAE x 1/4" SAE T-Fitting, 5 pieces	<b>4687141</b>



**T6-4**

**New with Forged Brass Tee**



**REF-VAC**

Designation	Description	Part No.
<b>SWIVEL-ARM-1/4"SAE-N</b>	Swivel arm 1/4" SAE	<b>4687631</b>



**SWIVEL-ARM**



# Manifolds

## DIGIMON - Digital Manifold

### DIGIMON-SE

User friendly 2-way and 4-way digital manifold for the efficient and safe maintenance and operation of air conditioning and refrigeration systems. The latest generation is characterized by its compact design and sturdy construction. The modern display allows for, superheating, subcooling, vacuum levels and leakage test to be shown along with the pressure and temperature reading. Additionally, in analog mode, the digital figures are displayed visually. The DIGIMON meets the most important requirements for a digital manifold and is available in various versions. Available accessories include K-Type thermocouple as well as an external vacuum sensor.

- 48 refrigerant tables incl. R410A, R744(CO2), R1234yf
- Analog and digital display
- Accuracy: class 1.0
- Pressure resolution: 0.5 psi / 0.01 bar / 1kPa / 0.001 MPa
- Pressure gauge from -14 psi to 870 psi
- Direct calculation and display of superheat and subcool
- 2 precise K-Type temperature sensors
- Internal and external vacuum sensor
- Leak Test function
- Backlit LCD display with multiple protection
- User Friendly operation
- Fiber reinforced ergonomic knobs
- Automatic power-save mode
- Low battery indicator
- Continuous measuring rate

Part No. 4686749

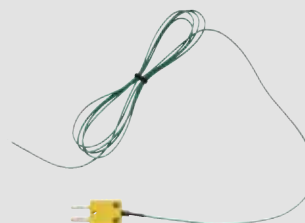


DIGIMON-VAC



Vacuum indication with DIGIMON-VAC

Designation	Description	Part No.
<b>DIGIMON-CLAMP</b>	K-Type thermocouple clamp	<b>4681466</b>
<b>DIGIMON-SENSOR-K-TYPE</b>	K-Type temperature sensor	<b>4681394</b>
<b>DIGIMON-SE-CASE</b>	Carrying case with storage compartment for the digital manifold	<b>4686730</b>
<b>DIGIMON-VAC</b>	External vacuum sensor	<b>4686713</b>



DIGIMON-SENSOR-K-TYPE

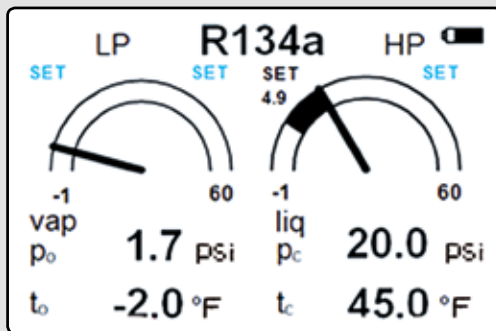


DIGIMON-CLAMP





**DIGIMON-SE**  
patent pending



**DIGIMON-SE Analog Display**

## 2-WAY DIGITAL MANIFOLD

Designation	Description	Part No.
<b>DIGIMON-SE-8</b>	Digital 2-way manifold, with 2 K-type temperature sensors, packed in a sturdy plastic case	<b>4686749</b>
<b>DIGIMON-SE-3</b>	Digital 2-way manifold, 5' set hoses, packed in a sturdy plastic case	<b>4686750</b>
<b>DIGIMON-SE-3-CLAMP</b>	as above including, K-Type thermocouple clamp	<b>4684589</b>
<b>DIGIMON-SE-3-CLAMP-VAC</b>	as above including, K-Type thermocouple clamp + vacuum gauge	<b>4684590</b>

## 4-WAY DIGITAL MANIFOLD

Designation	Description	Part No.
<b>DIGIMON4-3-CLAMP-VAC</b>	Combination of DIGIMON4, DIGIMON-CLAMP and DIGIMON-VAC	<b>4684591</b>



**DIGIMON4**

## DIGIMON-SE Accessory Chart

Designation	2-way manifold	4-way manifold	5 foot hose set	Case	K-Type thermocouple	K-Type clamp	Vacuum gauge	Part No.
<b>DIGIMON-SE-8</b>	X			X	X2			<b>4686749</b>
<b>DIGIMON-SE-3</b>	X		X	X	X2			<b>4686750</b>
<b>DIGIMON-SE-3-CLAMP</b>	X		X	X	X2	X2		<b>4684589</b>
<b>DIGIMON-SE-3-CLAMP-VAC</b>	X		X	X	X2	X2	X	<b>4684590</b>
<b>Digimon4-3-CLAMP-VAC</b>		X	X	X	X2	X2	X	<b>4684591</b>

# Manifolds

## REFCO Manifolds

### General Information

F- pressure scale in psi and temperature scale in degrees F

#### Temperature scales:

R12	= R12/R22/R502
R22	= R22/R134a/R404A
R32	= R32/R410A
R134a	= R134a/R404A/R507
R410A	= R410A
R410A-FG	= R410A/R404A/R22



APEX-9-F-R410A-FG





## APEX Manifolds

## R410A Manifold

### Standard Two-Way Brass Manifold

- Class 1.6 bourdon tube gauges (KM), easy to read, zero point adjustable, pulse free and color-coded
- Two piece, O-ring seal piston style valve, repairable
- Swivel hook and 45° hose anchors
- Color-coded handwheels
- High quality brass body
- All hoses are high pressure, 870 psi working pressure, 3600 psi burst pressure

- Same features but with all metal housing gauges (M2)
- R410A manifold with refrigerant scales R22/R134a/R410A



APEX-9



APEX-9



APEX-9

Designation	Hoses	Packaging	Part No.
APEX-9-F-R12	none	blister package	4675458
APEX-9-F-R22	none	blister package	4675466
APEX-9-F-R134a	none	blister package	4675475
APEX-7-F-R12	3' set	blister package	4675377
APEX-7-F-R22	3' set	blister package	4675386
APEX-7-F-R134a	3' set	blister package	4675394
APEX-7-F-R12-CCL-60	5' set	blister package	4675416
APEX-7-F-R22-CCL-60	5' set	blister package	4675424
APEX-7-F-R134a-CCL-60	5' set	blister package	4675432
APEX-7-F-R32-CCL-60	5' set	blister package	4687455

Designation	Hoses	Packaging	Part No.
APEX-9-F-R410A-FG	none	blister package	4675483
APEX-7-F-R410A-FG	3' set	blister package	4675407
APEX-7-F-R410A-FG-CCL-60	5' set	blister package	4675440
APEX-7-F-R410A-FG-CA-CCL-60	5' set	blister package	4686280

# Manifolds

## BM Series Manifolds

### Premium Two-Way Manifold

- All metal housing Class 1.6 bourdon tube gauges (M2), easy to read, zero point adjustable, pulse free and color coded
- Two-piece, O-ring seal piston style valve
- Extra large sight glass to view refrigerant movement
- Swivel hook and 45° hose anchors
- Anodized high quality aluminum body
- Color coded handwheels
- All hoses are high pressure, 870 psi working pressure, 3600 psi burst pressure

Designation	Hoses	Packaging	Part No.
<b>BM2-8-F-R22</b>	none	cardboard box	<b>4506490</b>
<b>BM2-8-F-R134a</b>	none	cardboard box	<b>9884439</b>
<b>BM2-6-F-R22</b>	3' set	cardboard box	<b>4506502</b>
<b>BM2-6-F-R22-CCL-60</b>	5' set	cardboard box	<b>4506520</b>
<b>BM2-6-F-R22-CCL-72</b>	6' set	cardboard box	<b>4506554</b>
<b>BM2-3-F-R22</b>	3' set	plastic case	<b>4506562</b>



**BM2-8**

### R410A Manifold – Two-Way BM Series

- All the same features as the standard BM series manifolds except higher pressure gauges (M2). Low side gauge pressure to 500 psi and high side gauge pressure to 800 psi
- Comes standard with 1/4" SAE charging hoses

Designation	Hoses	Packaging	Part No.
<b>BM2-8-F-R410A</b>	none	cardboard box	<b>4506571</b>
<b>BM2-6-F-R410A</b>	3' set	cardboard box	<b>4503261</b>
<b>BM2-6-F-R410A-CCL-60</b>	5' set	cardboard box	<b>4505710</b>
<b>BM2-6-F-R410A-CCL-72</b>	6' set	cardboard box	<b>4506589</b>
<b>BM2-3-F-R410A</b>	3' set	plastic case	<b>4505239</b>
<b>BM2-3-F-R410A-CCL-60</b>	5' set	plastic case	<b>4505433</b>
<b>BM2-3-F-R410A-CCL-72</b>	6' set	plastic case	<b>4506597</b>

- R410A Manifold with refrigerant scales R410A/R134a/R22

Designation	Hoses	Packaging	Part No.
<b>BM2-8-F-R410A-FG</b>	none	cardboard box	<b>4662535</b>
<b>BM2-6-F-R410A-FG-CCL-60</b>	5' set	cardboard box	<b>4662526</b>
<b>BM2-6-F-R410A-FG-CA-CCL-60</b>	5' set	cardboard box	
	w/ball valve		<b>4665305</b>



**BM2-8**





## Premium Four-Way Manifolds

- Charge and evacuate an A/C or refrigeration system without having to connect and disconnect hoses, saving time and money
- All metal housing Class 1.6 bourdon tube gauges (M2), easy to read, zero point adjustable, pulse free and color-coded
- Two piece, O-ring seal piston style valve
- Extra large sight glass to view refrigerant movement
- Swivel hook and 45° hose anchors
- Anodized high quality aluminum body
- Color coded handwheels
- All hoses are high pressure, 870 psi working pressure, 3600 psi burst pressure



BM4-3

M2-GS



Designation	Hoses	Packaging	Part No.
BM4-3-F-R410A-FG	none	plastic case	4675326
BM4-3-F-R12	3' set	plastic case	4506627
BM4-3-F-R22	3' set	plastic case	4506643
BM4-3-F-R410A-FG-CCL-60	5' set	plastic case	4675335

Designation	Description	Part No.
M2-GS	Rubber protection for gauges Ø 68 mm	4677451

# Manifolds

## Glycerin Filled

### Two-Way Manifold Set

- Class 1.6 Glycerin filled bourdon tube gauges (GR), easy to read, zero point adjustable, color coded
- Two-piece, O-ring seal piston style valve
- Extra large sight glass to view refrigerant movement
- Swivel hook and 45° hose anchors
- Anodized high quality aluminum body
- Color coded handwheels
- All hoses are high pressure, 870 psi working pressure, 3600 psi burst pressure



GM2-8



Designation	Hoses	Packaging	Part No.
GM2-8-F-R12	none	cardboard box	4507061
GM2-8-F-R134a	none	cardboard box	4507071
GM2-6-F-R12-CCL-60	5' set	cardboard box	4507100
GM2-6-F-R134a-CCL-60	5' set	cardboard box	4507118



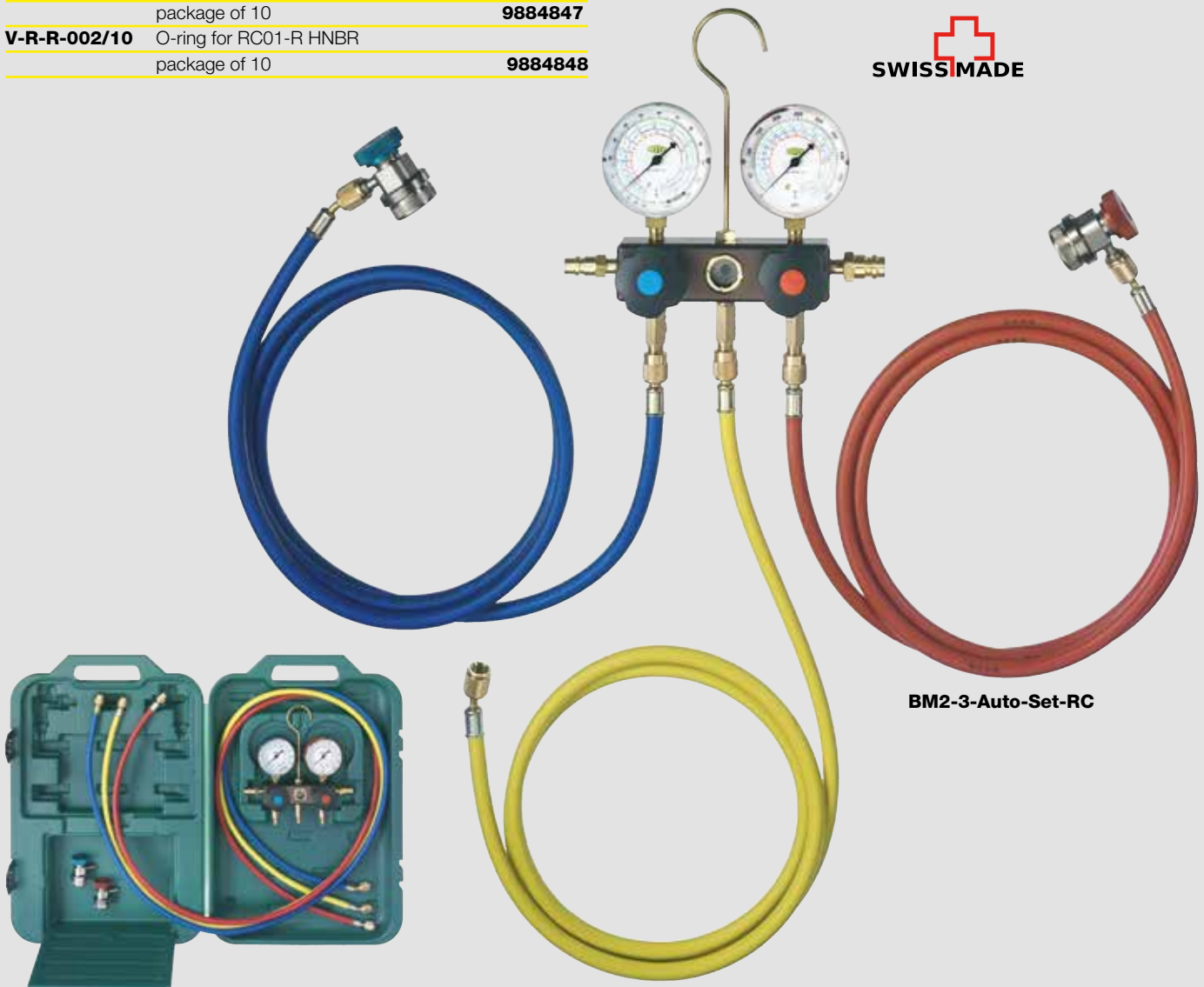
## Automotive Manifold Set

- All the same features as the standard BM series manifold except the manifold comes with high and low pressure automotive valve couplers.

Designation	Hoses	Packaging	Part No.
<b>BM2-3-F-Auto-Set-R134a-RC</b>	6' set	plastic case	<b>4506601</b>

- Replacement Auto Set Service Couplers

Designation	Description	Part No.
<b>RC01-B</b>	Blue automotive service-valve, ¼" SAE Auto Connection	<b>9884949</b>
<b>RC01-R</b>	Red automotive service-valve, ¼" SAE Auto Connection	<b>9884948</b>
<b>V-R-B-001/10</b>	O-ring for RC01-B HNBR package of 10	<b>9884847</b>
<b>V-R-R-002/10</b>	O-ring for RC01-R HNBR package of 10	<b>9884848</b>

**BM2-3-Auto-Set-RC**

**BM2-3-Auto-Set**

# Manifolds

Manifolds with large, easy to read Bourdon Tube Gauges

- Easy to read 3 1/4" (80 mm) gauges (M5)
- All metal housing Class 1.0 bourdon tube gauges
- Retard protection
- Color-coded for high and low side
- Pulse/vibration free
- Zero point adjustable
- Two-piece, O-ring seal piston style valve
- Extra large sight glass
- Swivel hook and 45° hose anchors
- Anodized high quality aluminum body
- Color-coded handwheels
- All hoses are high pressure, 870 psi working pressure, 3600 psi burst pressure



SM2-8

Designation	Hoses	Packaging	Part No.
SM2-8-F-R410A-FG	none	cardboard box	4675343
SM2-6-F-R410A-FG-CCL-60	5' set	cardboard box	4675351
SM2-3-F-R410A-FG-CCL-60	5' set	plastic case	4675369







## Manifolds with Bellow Type Oil Filled Gauges

Bellow type gauges are the most accurate found in the industry today. Bellow type gauges are accurate within 1% all the way around the gauge dial, extremely over pressure resistant and pulse free. There is no oil or glycerin fill nipple on these gauges to have weepage, seepage or leakage from.

### DELUXE Two-Way Oil Filled Manifolds Bellow Type

- Oil-filled, bellow type, Class 1.0 accuracy gauges (R3). Gauges are accurate within 1% all the way around the gauge face
- Made from anodized aluminum
- No plastic
- No fill nipple on the top of the gauge to allow leakage
- Pulse/vibration free
- Extremely over-pressure resistant. Gauge will withstand 2 1/2 times over-pressurization
- Zero point adjustable
- Easy to read 2 3/4" gauges (R3)
- Color-coded for high and low side
- Two-piece, O-ring seal piston style valve
- Extra large sight glass to view refrigerant movement
- Swivel hook and 45° hose anchors
- Anodized high quality aluminum body
- Color-coded handwheels
- All hoses are high pressure, 870 psi working pressure, 3600 psi burst pressure



**M2-8-DELUXE**



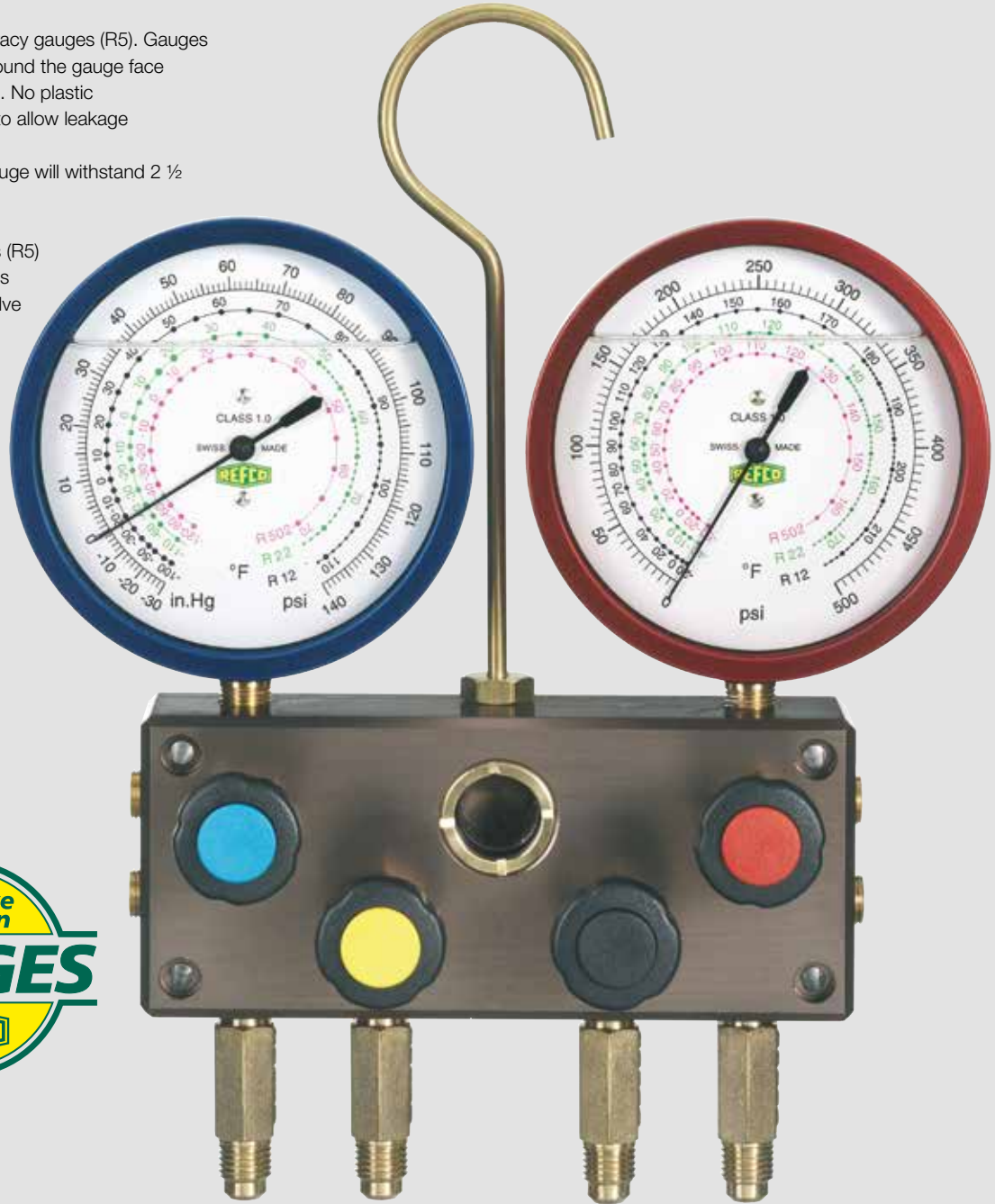
Designation	Hoses	Packaging	Part No.
<b>M2-8-DELUXE-F-R12</b>	none	cardboard box	<b>4505817</b>
<b>M2-8-DELUXE-F-R22</b>	none	plastic case	<b>4667498</b>
<b>M2-8-DELUXE-F-R410A-FG</b>	none	plastic case	<b>4675491</b>
<b>M2-3-DELUXE-F-R12-CCL-60</b>	5' set	plastic case	<b>4505809</b>
<b>M2-3-DELUXE-F-R22-CCL-60</b>	5' set	plastic case	<b>4667510</b>
<b>M2-3-DELUXE-F-R134a-CCL-60</b>	5' set	plastic case	<b>4506759</b>
<b>M2-3-DELUXE-F-R410A-FG-CCL-60</b>	5' set	plastic case	<b>4662543</b>
<b>M2-3-DELUXE-F-R410A-FG-CA-CCL-60</b>	5' set w/ball valve	plastic case	<b>4663727</b>

# Manifolds

## DELUXE Four-Way Oil Filled Manifolds Bellow Type



- Oil-filled, bellow type, Class 1.0 accuracy gauges (R5). Gauges are accurate within 1% all the way around the gauge face
- Gauge housing is anodized aluminum. No plastic
- No fill nipple on the top of the gauge to allow leakage
- Pulse/vibration free
- Extremely over-pressure resistant. Gauge will withstand 2 1/2 times over-pressurization
- Zero point adjustable
- Extra large, easy to read 3 1/4" gauges (R5)
- Color-coded high and low side gauges
- Two-piece, O-ring seal piston style valve
- Extra large sight glass to view refrigerant movement
- Swivel hook and 45° hose anchors
- Anodized high quality aluminum body
- Color-coded handwheels
- All hoses are high pressure, 870 psi working pressure, 3600 psi burst pressure
- Manifolds that come with hose sets also come with one 3/8" SAE yellow vacuum line 60" long with a working pressure of 465 psi and burst pressure of 2250 psi



M4-8-DELUXE



Designation	Hoses	Packaging	Part No.
M4-3-DELUXE-F-R12-CCL-60	5' set	plastic case	4505477
M4-3-DELUXE-F-R410A-FG-CCL-60	5' set	plastic case	4669997





## SUPERDELUXE Two-Way Manifold

- For the engineer looking for the highest quality manifold
- Oil-filled, bellow type, Class 1.0 accuracy gauges. Gauges are accurate within 1% all the way around the gauge face
- Pulse/vibration free
- Extremely over-pressure resistant. Gauge will withstand 2 ½ times over-pressurization
- Made from high quality eloxed aluminum
- Zero point adjustable
- Two-piece, O-ring seal piston style valve
- Extra large sight glass to view refrigerant movement
- Swivel hook and 45° hose anchors
- Color-coded handwheels
- All hoses are high pressure, 870 psi working pressure, 3600 psi burst pressure



Designation	Hoses	Packaging	Part No.
<b>MK-2-3-F-R12</b>	5' set	plastic case	<b>4506848</b>
<b>MK-2-3-F-R134a</b>	5' set	plastic case	<b>4506856</b>



**MK-2-3**

# Manifolds

## JUMBO-STAR

3/8" Bores and Connections

Super High Flow Manifold

### Standard Two-Way Manifold - High Flow

- 3/8" SAE bores all the way through the body to allow for increased flow over normal 1/4" SAE machined body. Standard 3/8" connections also
- Saves time and money during charging, recovery and vacuum operations
- Compact brass body with extra large sight glass
- All metal housing Class 1.6 bourdon tube gauges (M2), easy to read, zero point adjustable, pulse free and color-coded
- Two-piece, O-ring seal piston style valve
- Swivel hook 45° hose anchors
- Color-coded handwheels
- All hoses 3/8" SAE connections, 465 psi working pressure, 2250 psi burst pressure



### JUMBO-STAR

Designation	Hoses	Packaging	Part No.
JUMBO-STAR-2-3-F-R12	3/8" 3' set	plastic case	4668109
JUMBO-STAR-2-3-F-R134a	3/8" 3' set	plastic case	4668117
JUMBO-STAR 2-3-F-R410A-FG	3/8" 3' set	plastic case	4686417



## REF-CLASS-GAUGE

The digital pressure test gauge takes the concept of an analog gauge, and brings it to a new level, as only digital calibrators can do. The REF-CLASS-GAUGE combines the accuracy of digital with the simplicity of an analog gauge. It achieves high level performance, ease-of-use and features unmatched in the pressure measurement world.

The versatility of this high-end product is to your benefit. The REF-CLASS-GAUGE allows you to test the pressure of gauges on your own and helps to save costs. For instance the digital manifold "DIGIMON" can easily be calibrated in-house.

The REF-CLASS-GAUGE offers a comfortable and compact solution to perform pressure calibration on-site. The setup is fast and straightforward, through a menu-driven display with minimal test and intuitive functions. A carrying case protects this precision device perfectly.

- Simple generation of test pressure on-site, in lab or in the shop floor
- For testing, setting and calibrating of any pressure gauge
- Pneumatic pressure generation of -950 mbar 500 psi
- Ergonomic handling
- Precise alignment through fine-control valve
- Accuracy: 0.05% FS (incl. calibration certificate) for pressure- and temperature measurement
- Rugged stainless steel case meets NEMA 4/IP65
- Data logger function
- Data interpretation software available on demand

**Part No. 4682293**



**REF-CLASS-GAUGE**



**The REF-CLASS-GAUGE is used to verify the correct calibration of your manifold gauges or any gauges pressure reading. Make sure you are meeting the exact standards of the equipment your servicing!**

# Manifolds

## Manifold Spare Parts

Spare Handwheels for Two-Way Manifold Series:

Designation	Description	Part No.
<b>M2-6-09-B+R</b>	Blue, Red handwheel	<b>4687080</b>
<b>M2-7-SET-B+R</b>	Blue, Red handwheel	<b>4687079</b>



Spare Handwheels for Four-Way Manifold Series:

Designation	Description	Part No.
<b>M4-6-09-B</b>	Blue handwheel	<b>4490976</b>
<b>M4-6-09-N</b>	Black handwheel	<b>4490984</b>
<b>M4-6-09-Y</b>	Yellow handwheel	<b>4491000</b>
<b>M4-7-SET-B+N+R+Y</b>	Blue, Black, Red, Yellow handwheel	<b>4687094</b>



Hook for all manifolds apart from the DIGIMON:

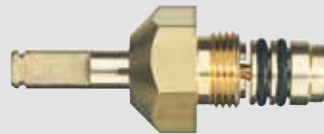
Designation	Description	Part No.
<b>M4-6-10</b>	Hook for manifold	<b>9882584</b>



**M4-6-10**

Complete Manifold Valve Replacement Kit:

Designation	Description	Part No.
<b>M2-10-95-R/2</b>	Package of 2 replacement valves	<b>4687104</b>
<b>M2-10-95-R/4</b>	Package of 4 replacement valves	<b>4687105</b>



**M2-10-95-R**





Replacement Valve Seat Assembly:

Designation	Description	Part No.
<b>M4-6-04-R/4</b>	Package of 4 valve seat assemblies	<b>4687093</b>
<b>M4-6-04-R/10</b>	Package of 10 valve seat assemblies	<b>4662624</b>
<b>M4-6-04-JUMBO</b>	Single valve seat assembly for JUMBO-STAR	<b>4666726</b>



Sight Glass Replacement Parts:

Designation	Description	Part No.
<b>M4-6-11</b>	Sight glass w/O-ring and brass threaded ring for R410A manifolds	<b>4491018</b>
<b>M4-6-11-T</b>	Special sight glass threaded ring installation tool	<b>4493169</b>



Hose holder for REFCO manifolds:

Designation	Description	Part No.
<b>A-31452-Y</b>	Y-plug hose holder for manifolds	<b>4665118</b>



Plastic Carrying Multi-Case:

Designation	Description	Part No.
<b>M4-6-15</b>	Carrying case with storage compartment for 2- and 4-way REFCO manifolds made of sturdy plastic	<b>4666106</b>



Rubber protection for gauges:

Designation	Description	Part No.
<b>M2-GS</b>	Rubber protection for gauges Ø 68 mm, set of 1 red and 1 blue	<b>4677451</b>

# Charging Hoses

## Charging and Testing Hoses



Features of REFCO Charging hoses include:

- Standard 870 psi working pressure, 3600 psi burst pressure making the REFCO charging hoses good for all refrigerants including R410A
- Eight sided crimp ensures maximum hose life
- Neoprene seals
- Knurled brass nut for easy finger tightening
- Multiple lengths available
- Color coded for convenience
- Available in packs of 3 (one red, one yellow and one blue hose) or individually



CL-36-Y

## Sets of 3

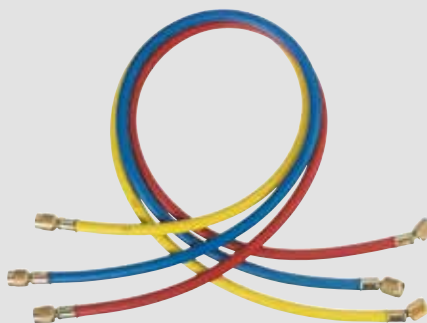
Premium REFCO Charging Hoses with 1/4" SAE Fittings

Designation	Description	Part No.
<b>CCL-36</b>	Set of 3 - 36"	<b>9881278</b>
<b>CCL-48</b>	Set of 3 - 48"	<b>9881277</b>
<b>CCL-60</b>	Set of 3 - 60"	<b>9881276</b>
<b>CCL-72</b>	Set of 3 - 72"	<b>9881275</b>

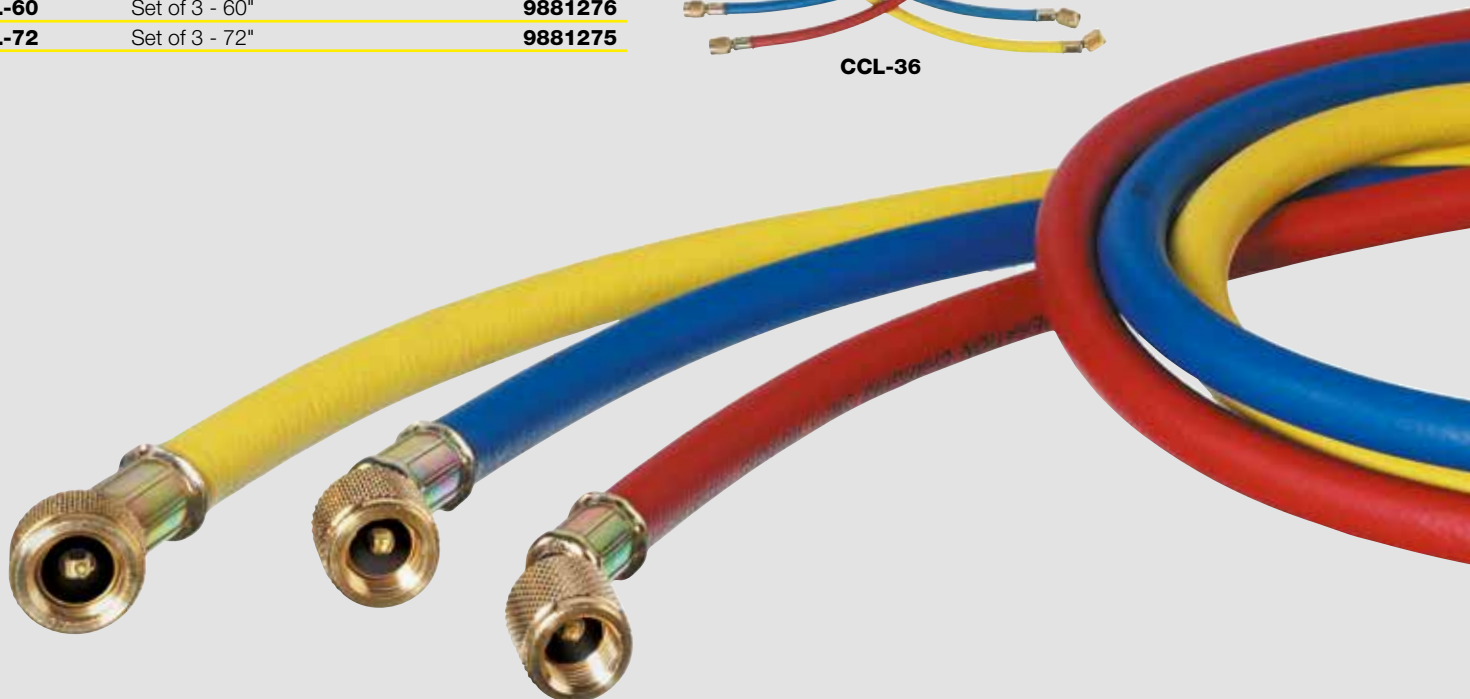
## Individual Charging Hoses

Premium REFCO Charging Hoses with 1/4" SAE Fittings

Designation	Description	Part No.
<b>CL-36-Y</b>	36" Yellow hose	<b>9881271</b>
<b>CL-36-R</b>	36" Red hose	<b>9881262</b>
<b>CL-36-B</b>	36" Blue hose	<b>9881253</b>
<b>CL-48-Y</b>	48" Yellow hose	<b>9881270</b>
<b>CL-48-R</b>	48" Red hose	<b>9881261</b>
<b>CL-48-B</b>	48" Blue hose	<b>9881252</b>
<b>CL-60-Y</b>	60" Yellow hose	<b>9881269</b>
<b>CL-60-R</b>	60" Red hose	<b>9881260</b>
<b>CL-60-B</b>	60" Blue hose	<b>9881251</b>
<b>CL-72-Y</b>	72" Yellow hose	<b>9881268</b>
<b>CL-72-R</b>	72" Red hose	<b>9881259</b>
<b>CL-72-B</b>	72" Blue hose	<b>9881250</b>



CCL-36





## Environmentally Friendly REFCO Charging Hoses with Special Barrier Protection

Features include:

- All of the features of the standard charging hose but are made from a special material which prevents virtually any permeation of refrigerant, yet remain flexible and easy to work with
- Meets SAE J2196 for permeation allowance

### Sets of 3

Designation	Description	Part No.
<b>CCL-36-J2196</b>	Set of 3 - 36"	<b>9884728</b>
<b>CCL-60-J2196</b>	Set of 3 - 60"	<b>9884729</b>
<b>CCL-72-J2196</b>	Set of 3 - 72"	<b>9884730</b>



**CCL-36**

## Individual Charging Hoses

Designation	Description	Part No.
<b>CL-36-Y-J2196</b>	36" Yellow hose	<b>9884719</b>
<b>CL-36-R-J2196</b>	36" Red hose	<b>9884720</b>
<b>CL-36-B-J2196</b>	36" Blue hose	<b>9884721</b>
<b>CL-60-Y-J2196</b>	60" Yellow hose	<b>9884722</b>
<b>CL-60-R-J2196</b>	60" Red hose	<b>9884723</b>
<b>CL-60-B-J2196</b>	60" Blue hose	<b>9884724</b>
<b>CL-72-Y-J2196</b>	72" Yellow hose	<b>9884725</b>
<b>CL-72-R-J2196</b>	72" Red hose	<b>9884726</b>
<b>CL-72-B-J2196</b>	72" Blue hose	<b>9884727</b>



**CL-36-R-J2196**



**QC-S410A**

Adapter to take a hose from 1/4" SAE to 5/16" SAE (1/2"-20UNF)

Designation	Description	Part No.
<b>QC-S410A/2</b>	Adapter with core depressor 1/4" SAE male x 5/16" SAE female Packaged 2 per	<b>4687095</b>



**P-509**



**P-509-T**



**P-513**

## Spare Parts for REFCO 1/4" SAE Charging Hoses

Designation	Description	Part No.
<b>P-509/10</b>	Ten neoprene gaskets for 1/4" SAE hoses	<b>9880872</b>
<b>P-509-T/10</b>	Ten Teflon gaskets for 1/4" SAE hoses	<b>9880871</b>
<b>P-513/10</b>	Ten core depressors for Schrader valves	<b>9880869</b>

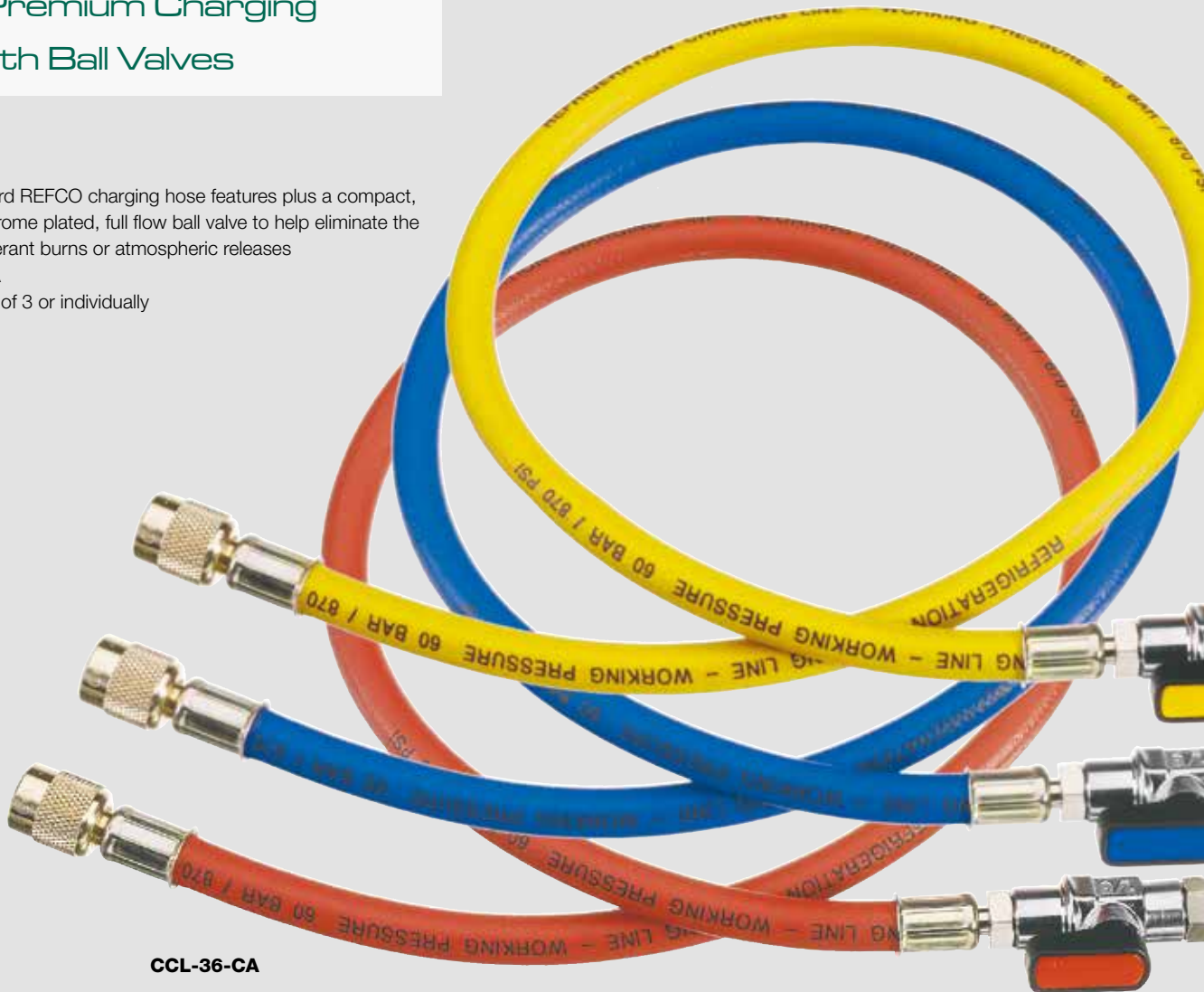


# Charging Hoses

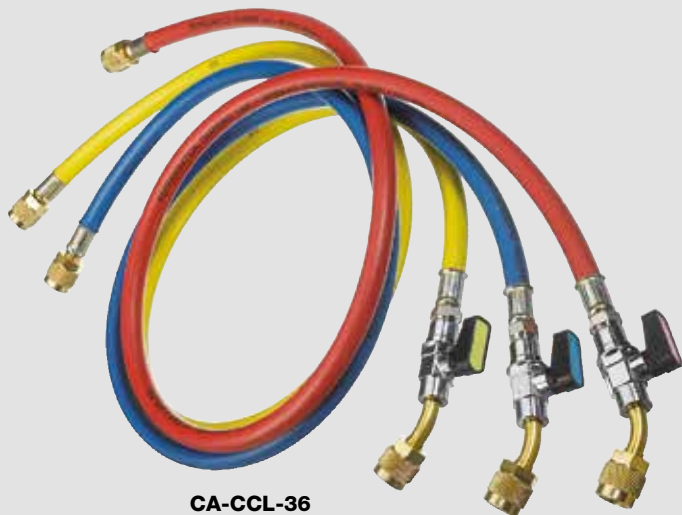
## REFCO Premium Charging Hoses with Ball Valves

Features include:

- All of the standard REFCO charging hose features plus a compact, color-coded, chrome plated, full flow ball valve to help eliminate the chance of refrigerant burns or atmospheric releases
- Good for R410A
- Available in sets of 3 or individually



**CCL-36-CA**



**CA-CCL-36**

### Sets of 3

Premium REFCO charging hose with ball valve and flexible length of hose between ball valve and fitting. 1/4" SAE on both ends.

Designation	Description	Part No.
<b>CCL-36-CA</b>	Set of 3 - 36" w/CA valve	<b>4668559</b>
<b>CCL-60-CA</b>	Set of 3 - 60" w/CA valve	<b>4668533</b>

Premium REFCO charging hose with ball valve

Designation	Description	Part No.
<b>CA-CCL-36</b>	Set of 3 - 36" w/ball valve	<b>4493614</b>
<b>CA-CCL-60</b>	Set of 3 - 60" w/ball valve	<b>4493622</b>
<b>CA-CCL-72</b>	Set of 3 - 72" w/ball valve	<b>4493631</b>



## Individual Charging Hoses

Premium REFCO charging hoses with ball valve

Designation	Description	Part No.
<b>CA-CL-9-B-M</b>	9" Blue hose w/ball valve	<b>4682056</b>
<b>CA-CL-9-R-M</b>	9" Red hose w/ball valve	<b>4682047</b>
<b>CA-CL-9-Y-M</b>	9" Yellow hose w/ball valve	<b>4682039</b>
<b>CA-CL-36-Y</b>	36" Yellow hose w/ball valve	<b>4492936</b>
<b>CA-CL-60-Y</b>	60" Yellow hose w/ball valve	<b>4492961</b>
<b>CA-CL-60-R</b>	60" Red hose w/ball valve	<b>4492952</b>
<b>CA-CL-60-B</b>	60" Blue hose w/ball valve	<b>4492944</b>
<b>CA-CL-72-Y</b>	72" Yellow hose w/ball valve	<b>4492995</b>
<b>CA-CL-72-R</b>	72" Red hose w/ball valve	<b>4492987</b>
<b>CA-CL-72-B</b>	72" Blue hose w/ball valve	<b>4492979</b>



**CA-CL-9**

**CA-CL-36**



## REFCO Ball Valves

Ball Valve with 1/4" SAE male and female fittings, core depressor and knurled nut



**CA-1/4"SAE-Y**

Designation	Description	Part No.
<b>CA-1/4"SAE-Y</b>	Yellow ball valve with male & female 1/4" fittings	<b>4493738</b>
<b>CA-1/4"SAE-R</b>	Red ball valve with male & female 1/4" fittings	<b>4493533</b>
<b>CA-1/4"SAE-B</b>	Blue ball valve with male & female 1/4" fittings	<b>4493525</b>

# Charging Hoses

## REFCO Magic Seal Charging Hoses

Magic Seal charging hose features:

- Built in valve automatically closes when disconnecting the charging hose from the system, preventing refrigerant loss and burning of the skin
- One side straight connection, other side 45° bended
- Standard 870 psi working pressure and 3600 psi burst pressure make the hose good for all refrigerants including R410A
- Eight sided crimp ensures maximum life
- Knurled brass nut for easy finger tightening
- Neoprene seals
- Multiple lengths available
- Color-coded for convenience

Designation	Description	Part No.
<b>CPV-60-Y</b>	60" Yellow hose w/built in shut off valve	<b>9881230</b>
<b>CPV-60-R</b>	60" Red hose w/built in shut off valve	<b>9881240</b>
<b>CPV-60-B</b>	60" Blue hose w/built in shut off valve	<b>9881235</b>

Designation	Description	Part No.
<b>CPV-DS</b>	Gasket set for CPV hoses	<b>4684512</b>

## Sets of 3

Magic Seal charging hose

Designation	Description	Part No.
<b>CPV-CCL-60</b>	Set of 3 - 60" w/built in shut off valve	<b>4495421</b>







## REFCO 3/8" SAE Charging Hoses

Features of the 3/8" SAE charging hose are as follows:

- Standard 465 psi working pressure, 2250 psi burst pressure
- Eight sided crimp to ensure maximum hose life
- Knurled brass nut for easy finger tightening
- Multiple hose lengths available
- Color-coded for convenience

Designation	Description	Part No.
<b>HCL6-60-Y</b>	60" 3/8" SAE Yellow hose	<b>9881313</b>



**HCL6-60-Y**

## Spare Parts for REFCO 3/8" SAE Charging Hoses

Designation	Description	Part No.
<b>P-510/10</b>	10 Neoprene O-rings for 3/8" SAE charging hoses Packaged 10 per	<b>9880870</b>
<b>A-40513/10</b>	Core depressor for 3/8" SAE charging hoses Packaged 10 per	<b>9884813</b>



**A-40513**

# Leak Detection

## REF-LOCATOR

### Electronic Leak Detector

The requirements for leak detectors are constantly increasing and in order to keep up with the newest developments and technologies, we have developed the REF-LOCATOR. This high-end unit fulfills all the specifications and requirements which are expected from a modern leak detector today.

The basis of solid electrolyte sensor technology sets new standards in the area of leak detection. The sensor has a higher than average life cycle of approximately 10 years, which is a large advantage over conventional leak detectors. With the large LCD display, one is always informed about the ongoing activities.

Through the adjustment of the 3 sensitivity levels, it is easy to localize large leaks. In addition, the inspection light is ideal for having a good overview, even in the dark. The REF-LOCATOR is delivered in a practical, rugged case.



#### Technical Data:

Sensitivity:	0.05 oz/yr (1.4 g/year) All HFC's incl. R410A, R404A, R407C & R134a 0.025 oz/yr (0.7 g/year) HCFC R22 0.03 oz/yr (0.9 g/year) HFO R-1234yf
Standards	SAE-J2791 (R-134a), SAE-J2913 (R-1234yf)
Certifications:	Complies to standard SAE-J2791, SAE-J2913 EN14624:2012, CE, ROHS, ASHRAE Standard 173
Inspection light:	3 white LED's and 3 UV - auto shut off in 5 minutes
Sensor life:	>10 years/4000 hours
Sensor Technology:	Solid electrolyte semi-conductor
Warm-up time:	approx. 30 seconds
Response time:	instantaneous
Display:	BTN-LCD with 10 segment color "pie graph" showing leak size
Sensitivity levels:	MAX- 0.15oz/yr (4 g/yr) MED- 0.25 oz/yr (7 g/yr) MIN- 0.5 oz/yr (14 g/yr)
Mute function:	Silent mode – Display shows leak indication
Power supply:	4 AA Alkaline or 4 AA NiMH Batteries
Battery life:	2.5 hours
IP-classification:	54
Probe length:	17"
Dimensions:	10 x 3 x 2.5 in
Weight:	1.3 lb

Part No. 4686714



**New with both UV and LED lights to help find refrigerant leaks! For REF-LOCATOR and TRACE-LOCATOR. No UV enhancement eyeglasses needed.**



REF-LOCATOR

### Spare Parts for REF-LOCATOR

Designation	Description	Part No.
<b>LOCATOR-FILTER/5</b>	spare filter (set of 5 pieces)	<b>4686821</b>
<b>REF-LOCATOR-CASE</b>	plastic case	<b>4686707</b>
<b>REF-LOCATOR-TV-01</b>	test vial	<b>4686705</b>
<b>LOCATOR-LED-UV/6</b>	Spare LED UV (set of 6 pieces)	<b>4687034</b>
<b>LOCATOR-LED-WHITE/6</b>	Spare LED white (set of 6 pieces)	<b>4686828</b>

## TRACE-LOCATOR

### Electronic Leak Detector

The leak detector for professional leak detection with trace gas 95/5 (95% nitrogen, 5% hydrogen), featuring the latest technology. The 95/5 trace gas is environmentally friendly, non-toxic, nonflammable and non-corrosive. The gas escapes at the leaky spot which then can easily be localized with the TRACE-LOCATOR. In addition, after evacuating the unit, the nitrogen in the trace gas binds with the possible remaining moisture. Additionally, during and after the leak detection, no environmentally harmful refrigerants will leak out. Due to the low density of hydrogen which is lighter than air, even minor leakages can be detected quickly. By means of a colored pie chart, the large LCD display, always shows the latest data. The TRACE-LOCATOR is delivered in a practical, rugged case.



**TRACE-LOCATOR**

#### Technical Data:

Sensitivity:	less than 5ppm (N <sub>2</sub> /H <sub>2</sub> tracer gas)
Certifications:	Fulfills the limits of standard EN35422 The tracer gas conforms to article 6, paragraph 3 of the EU directive 2006/40/EG Pending SAE-J2970 certification
Inspection light:	3 white LED's and 3 UV - auto shut off in 5 minutes.
Sensor life:	1000 hours
Sensor Technology:	Solid electrolyte semi-conductor
Warm-up time:	approx. 30 seconds
Response time:	instantaneous
Display:	BTN-LCD with 10 segment color "pie graph" showing leak size Backlight included
Sensitivity levels:	3 levels
Mute function:	Silent mode - display shows leak indication visually
Power supply:	4 AA Alkaline or 4 AA NiMH Batteries
Battery life:	4.5 hours
IP-classification:	54
Probe length:	17"
Dimensions:	10 x 3 x 2.5 in
Weight:	1.3 lb

**Part No. 4686715**

### Spare Parts for TRACE-LOCATOR

Designation	Description	Part No.
<b>LOCATOR-FILTER/5</b>	spare filter (set of 5 pieces)	<b>4686821</b>
<b>TRACE-LOCATOR-CASE</b>	plastic case	<b>4686708</b>
<b>TRACE-LOCATOR-TV-01</b>	test vial	<b>4686703</b>
<b>LOCATOR-LED-UV/6</b>	Spare LED UV (set of 6 pieces)	<b>4687034</b>
<b>LOCATOR-LED-WHITE/6</b>	Spare LED white (set of 6 pieces)	<b>4686828</b>



# Leak Detection

STARTEK

Electronic Leak Detector for all  
Halogenated Refrigerants



- Extremely compact design concept similar to a cell phone
- Ergonomical design focused on performance and simplicity of operation
- Microprocessor controlled unit and state of the art microelectronics
- Detects all halogenated refrigerants **incl. R410A**
- Certified to SAE J1627 standard
- Simple one-button operation
- Two sensitivity levels using a double-click computer mouse action
- One touch reset-mode
- High performance true mechanical pump to provide positive airflow through the sensing tip
- Leak indication using both variable frequency audible and visual alarm
- Automatic shut-off after extended period of non-use to preserve battery life
- Battery life indicator
- Prevents incorrect readings by providing visual and audible warning followed by an automating shut-off when battery reaches a critical level
- State of the art sensor technology for higher reliability and longer life time
- Includes a practical belt clip holster that also protects the unit in your tool box
- Specially designed 12" flexible probe for easy reach
- Additional replacement sensor included inside the battery compartment
- **Packed up in a sturdy plastic case**



STARTEK

## Technical Data:

Dimensions:	6 x 1.4 x 2.1 inch
Weight:	6.7 oz
Batteries:	2 x AA batteries
Battery lifetime:	40 hours
Sensitivity:	less than 0.1 oz/year
Sensor lifetime:	approx. 30 hours
Operating temperature:	32 °F to 125 °F
Warm up time:	less than 2 seconds
Response time:	instantaneous
Reset time:	instantaneous
Probe length:	12 inches
Warranty:	2 years

**Part No. 4507917**

Designation	Description	Part No.
ES-02	Replacement sensor (Pack of 2)	4507577
STARTEK-CASE	Replacement carrying case	4664333



**STARTEK-C**

## STARTEK-C

### Electronic Leak Detector for Combustible Gases

- This Combustible Gas Leak Detector with its new state of the art design is the most technologically advanced of its kind
- The STARTEK-C's low power requirements, small size and high sensitivity combine to create a tool which is easy to handle and ultra effective at locating even the most difficult-to-find leaks
- The STARTEK-C's long life sensor will detect concentrations of combustible gases as low as 5 ppm
- It is sensitive to all combustible gases
- The STARTEK-C also features a low sensitivity mode, enabling quick and easy location of large combustible gas leaks
- **Packed up in a sturdy plastic case**



#### Technical Data:

Dimensions:	6 x 1.4 x 2.1 inch
Weight:	6.7 oz
Batteries:	2 x AA batteries
Battery lifetime:	11 hours
Sensitivity:	less than 50 ppm (Propane, Isobutane, Methane, Natural Gas)
Sensor lifetime:	less than 1 year normal use
Operating temperature:	32 °F to 125 °F
Warm up time:	45 seconds (conditioned sensor)
Calibration:	automatic
Response time:	5 seconds
Reset time:	5 seconds or more depending on gas concentration
Probe length:	12 inches
Warranty:	2 years

**Part No. 4660664**

Designation	Description	Part No.
<b>ES-C</b>	Replacement sensor	<b>4660672</b>
<b>STARTEK-C-CASE</b>	Replacement carrying case	<b>4665593</b>

# Charging Scale

## Charging Scale

### OCTA-WIRELESS

This reliable, electronic charging scale transmits the measurement data to the wireless display, allowing for mobile operation of the scale within a radius of 33 ft. The light, solid, aluminum housing along with the slim design, make the OCTA-WIRELESS particularly suitable for large refrigerant cylinders. Through the convenient, wireless control panel, the OCTA-WIRELESS can easily be programmed or recalibrated. REF-METER-OCTA-PLUS, the automatic charging system, is an ideal addition to the OCTA-WIRELESS. The wireless electronic charging scale is delivered in a durable carrying pouch.

#### Technical Data:

Capacity:	220 lbs
Platform:	Diameter 12.6 in Height 1.75 in
Accuracy:	+/-0.5 %
Resolution:	0.1 oz, 0.005 lbs
Power Supply:	2x 4 AAA- batteries
Battery lifetime:	60 h control panel + platform
Weight:	1.2 lbs with batteries
Signal range:	33 ft

**Part No. 4686663**

### OCTA-WIRELESS-KIT

Combination kit including OCTA-WIRELESS and REF-METER-OCTA-PLUS.

**Part No. 4686742**

### OCTA-WIRELESS-CONTROL-BOX

Control Box for OCTA-WIRELESS

**Part No. 4686752**



**REF-METER-OCTA-PLUS**



**OCTA-WIRELESS**



**OCTA-WIRELESS-KIT**

### REF-METER-OCTA-PLUS

Automatic charging module for the OCTA-WIRELESS and REF-METER-OCTA. It is suitable for all refrigerants. Through a visual and an acoustic signal the exact programmed filling weight is achieved.

#### Technical Data:

Charging Port:	¼" SAE
Max. Valve operating pressure:	500 psi, 34 bar
Power supply:	4 x 1,5 V AA Alkaline Batteries
Battery lifetime:	> 200 hours
Materials:	Valve Body Brass, Seal Neoprene-W
Operating temperature:	0 °C to 50 °C / 32 °F to 122 °F
Weight:	1.2 lbs with batteries
Dimensions:	8.6 x 6.6 x 1.9 inch

**Part No. 4681823**





## REF-METER-OCTA

REF-METER-OCTA is a new electronic refrigerant scale built in high quality, sturdy and modern design.

- New design
- Sturdy aluminium platform
- Unique cable auto reel
- Easy to read LCD display
- Compact and lightweight (5.5 lbs)
- Large refrigerant cylinder platform
- Extremely high accuracy
- Programmable
- Field calibratable
- Supplied in a carrying pouch

### Technical Data:

Capacity:	220 lbs
Platform:	diameter 12.6 inches
Accuracy:	±0.5%
Resolution:	0.005 lbs, 0.1 oz
Power supply:	Four AAA batteries
Battery lifetime:	30 hours

**Part No. 4679462**



## REF-METER-OCTA CONTROL-BOX

Control Box for REF-METER-OCTA

**Part No. 4686813**



## REF-METER-OCTA-KIT

Combination kit including REF-METER-OCTA and REF-METER-OCTA-PLUS

**Part No. 4681989**



# Gas Pressure Test Kit

## GAS PRESSURE TEST KIT

**Precision test instrument used to accurately set manifold pressure for Natural and L.P. Gas**

- Includes sensitive diaphragm gauge that is calibrated in inches of water column and ounces per square inch for extreme accuracy
- Scale in 0-35" W.C.
- Kit includes brass barb fitting on gauge, rubber tube and nipple for easy connection to system manifold
- High impact carrying case
- Easier to use than a manometer

Designation	Description	Part No.
<b>GPK-35</b>	Gas Pressure Test Kit	<b>4683477</b>

### Spare Parts:

<b>GPK-35-01</b>	Gauge with barb fitting for GPK	<b>4680096</b>
<b>GPK-35-02</b>	Hose with nipple fitting for GPK	<b>4680087</b>
<b>GPK-35-03</b>	Rubber nipple for GPK	<b>4680109</b>
<b>GPK-35-04</b>	Barb fitting for GPK	<b>4680079</b>
<b>GPK-35-SIGHT-GLASS</b>	Gauge cover for GPK	<b>4680117</b>



**GPK-35**

# Thermometers



## Digital Thermometers

### Infrared Non-Contact Thermometer

The LP-88 is a rugged and practical infrared thermometer with a pistol grip, which allows for contact free temperature measurement. Various temperatures can efficiently be measured within a room. The built-in laser pointer simplifies the measurement by marking the measurement area with two red laser points.

This infrared thermometer is delivered in a durable, protective case.

#### Technical Data:

Temperature range:	-76 °F-1000 °F
Operating temperature:	32 °F-122 °F
Resolution:	0.1 °F
Accuracy:	± 2% of display or 4 °F Depending on which is greater
Battery life:	18 h
Distance spot:	12.1
IP classification:	54
Automatic shut-off:	after 15 seconds of inactivity
Emissivity	0.95- adjustable 0,1 to 1 in .01-steps
Weight:	0.4 lbs incl. 2x AAA batteries

Part No. 4686697



LP-88

## Digital Pocket Test Thermometer

This thermometer comes with an easy to read LCD digital readout, is battery operated, switchable from Fahrenheit to Celsius and comes with a protective sheath with clip.

- Range -40 °F to 300 °F
- Accuracy ±2°F
- Resolution 0.1 °F

Designation	Description	Part No.
DT-150	Pocket Test Thermometer	9884365



DT-150

## K-type thermocouple clamp

- Temperature range -40 °F to +257 °F
- Jaw range ¼" - 1 ½"
- Resolution 1 °F

Designation	Description	Part No.
DIGIMON-CLAMP	K-type thermocouple clamp	4681466



DIGIMON-CLAMP



# Video Scope

## REF-SCOPE

### Video inspection camera

The Inspection Camera REF-SCOPE® Insightvision is designed for the visual analysis of unreachable or hard to reach areas.

The Inspection camera is crucial for a clear, internal inspection of engines, A/C systems, interior structures of walls and other industrial and similar applications. Optical imaging and illumination is provided by a full color image sensor and 6 LED lamps which are controlled by an on/off rotary switch.

**Part No. 4679705**



### Technical Data:

Display	3.5" (8.9 cm) TFT digital panel Resolution 320 x 240 pixel
LCD backlight	LED
Image orientation	Normal- and mirroring display
Camera Head & Distal tip diameter	0.39" (10 mm)
Shaft length	42" (107 cm)
Shaft	water resistant
Video output	RCA phono jack
Weight	0.55 lb / 250 g (without batteries)
Power source	4 Alkaline AA batteries (3 hours full functional operation)
Attachments	cleaning material, batteries, AV cable, mirror, hook, extra strong magnet



**REF-SCOPE**

**REF-SCOPE-MIRROR**



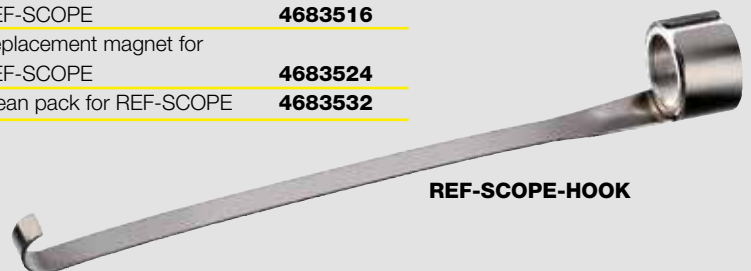
**REF-SCOPE-MAGNET**

### Spare Parts

Designation	Description	Part No.
<b>REF-SCOPE-MIRROR</b>	Replacement mirror for REF-SCOPE	<b>4683507</b>
<b>REF-SCOPE-HOOK</b>	Replacement hook for REF-SCOPE	<b>4683516</b>
<b>REF-SCOPE-MAGNET</b>	Replacement magnet for REF-SCOPE	<b>4683524</b>
<b>REF-SCOPE-CLEAN</b>	Clean pack for REF-SCOPE	<b>4683532</b>



**REF-SCOPE-CLEAN**



**REF-SCOPE-HOOK**

# Tools

## Tube Cutters

The new, durable telescopic tube cutter accurately cuts copper tubing

- Four roller tracking system keeps tube from threading
- Smooth turning of adjustment knob
- Full-stop feed system prevents wheels and rollers from coming into contact
- Heavy duty
- High quality
- Includes spare cutting wheel

Designation	Description	Part No.
<b>RS-16</b>	Tube cutter 1/8" to 5/8"	<b>4682722</b>
<b>RS-25</b>	Tube cutter 1/8" to 1"	<b>4682730</b>
<b>RS-35</b>	Tube cutter 1/8" to 1 3/8"	<b>4682748</b>
<b>RS-42</b>	Tube cutter 1/8" to 1 5/8"	<b>4682756</b>
<b>RS-67</b>	Tube cutter 1/4" to 2 5/8"	<b>4686904</b>
<b>RS-001/3</b>	Spare cutting wheel for tube cutter Packaged 3 per	<b>4687097</b>



<b>RFA-209-01/3</b>	Spare blades for RFA-209-STYLO-HD and RS tube cutter series, made of tough long life cobalt (set of 3 pieces)	<b>4687065</b>
---------------------	---	----------------



**RS-67**



**RS-42**



**RS-35**



**RS-25**



**RS-16**



**14338**

Designation	Description	Part No.
<b>14338</b>	REFCO roller for tubing construction. Useful for brazed or sweat type connections	<b>9881622</b>



## Pinch Off Tools



14285

Designation	Description	Part No.
14285	Up to 3/8" diameter suction tubes	9881530
RFA-105-FF	Pinch off tools for 1/4", 3/8" and 1/2"	9881528
14200	Pinch off pliers up to 3/8" O.D.	9881527
14215	Capillary tube cutter, without swaging the tube	9881087



RFA-105-FF



14200



14215



14210

## Recovery-Service

### Piercing Pliers

Designation	Description	Part No.
14210	Piercing pliers with changeable piercing needle and access fitting	9881526
14210-01/10	Package of 10 spare needles	4665550



RFA-209-STYLO

RFA-209-STYLO-HD



BR-4IN1

Designation	Description	Part No.
BR-4IN1	Cleaning brush 4 in 1	4677621

## Tubing Tools

Designation	Description	Part No.
RFA-209	Inner-Outer reamer	9881649
RFA-209-STYLO	Tube deburring tool, rotate blade	9883750
RFA-209-STYLO-HD	Heavy duty deburring tool with rotating blade Removes rough or irregular edges of steel, aluminium, copper and plastic Replaceable blades made of tough long life cobalt	4687051
RFA-209-01/3	Spare blades for RFA-209-STYLO-HD and RS tube cutter series, made of tough long life cobalt (set of 3 pieces)	4687065



RFA-209



RFA-209-01/3

# Tools

## 45 Degree Flaring Tools



525-F

Designation	Description	Part No.
<b>525-F</b>	Flaring and burnishing in one tool. Sizes from 3/16" to 5/8" O.D.	<b>9881571</b>
<b>RF-888-Z</b>	45° Eccentric flaring tool in inch-sizes. Made of forged high quality steel for tubes with an outside-diameter of: 3/16", 1/4", 5/16", 3/8", 1/2", 5/8", 3/4". Supplied in a sturdy plastic case	<b>4506171</b>
<b>RF-275-FS</b>	Flaring and swaging tool for tubes with an outside-diameter of: 3/16", 1/4", 5/16", 3/8", 1/2", 5/8". Supplied in a plastic case	<b>9881575</b>
<b>RF-175-FS</b>	45° Flaring and swaging tool in inch-sizes. Made of forged high quality steel for tubes with an outside-diameter of: 1/8", 3/16", 1/4", 5/16", 3/8", 7/16", 1/2", 5/8", 3/4". Supplied in a sturdy plastic case	<b>4506198</b>



RF-888-Z



RF-275-FS



RF-175-FS



BS-6

## Tube Bending Springs

Designation	Description (Outside diameter of tube)	Part No.
<b>BS-4</b>	1/4"	<b>9881648</b>
<b>BS-5</b>	5/16"	<b>9881642</b>
<b>BS-6</b>	3/8"	<b>9881641</b>
<b>BS-7</b>	7/16"	<b>9881640</b>
<b>BS-8</b>	1/2"	<b>9881639</b>
<b>BS-10</b>	5/8"	<b>9881638</b>
<b>BS-12</b>	3/4"	<b>9881637</b>



## Tube Benders

Designation	Description	Part No.
<b>RFA-364-FH-08</b>	1/2"	<b>9881667</b>
<b>RFA-364-FH-10</b>	5/8"	<b>9881666</b>
<b>RFA-364-FH-12</b>	3/4"	<b>9881665</b>
<b>RFA-368-FH</b>	Triple-header tube bender. Bends all tubes with an outside diameter of 1/4", 5/16" and 3/8" to a 90-degree bend	<b>9881657</b>



**RFA-368-FH**



**RFA-364-FH**



**TELL-7-AD**



**TELL-7**

Designation	Description	Part No.
<b>TELL-7</b>	Cross-Bow type tube bender set for easy, ergonomic handling. For following outside diameters: 1/4", 5/16", 3/8", 1/2", 5/8", 3/4", 7/8". Supplied with tube cutter in a sturdy plastic case.	<b>4666076</b>
<b>TELL-7-BA-1/4"</b>	Bending adapter 1/4"	<b>4669432</b>
<b>TELL-7-BA-5/16"</b>	Bending adapter 5/16"	<b>4669440</b>
<b>TELL-7-BA-3/8"</b>	Bending adapter 3/8"	<b>4669458</b>
<b>TELL-7-BA-1/2"</b>	Bending adapter 1/2"	<b>4669466</b>
<b>TELL-7-BA-5/8"</b>	Bending adapter 5/8"	<b>4669475</b>
<b>TELL-7-BA-3/4"</b>	Bending adapter 3/4"	<b>4669483</b>
<b>TELL-7-BA-7/8"</b>	Bending adapter 7/8"	<b>4669491</b>
<b>TELL-7-SB</b>	Short bar	<b>4669416</b>
<b>TELL-7-LB</b>	Long bar	<b>4669407</b>
<b>TELL-7-HANDLE</b>	Handle complete	<b>4669513</b>
<b>TELL-7-AD</b>	Reverse bend adapter	<b>4669679</b>



**TELL-7**



# Tools

## Expander Tool Set

### HY-EX-6

New Hydraulic Expander tool kit with 6 expander heads to cover all size tubes of 3/8", 1/2", 5/8", 3/4", 7/8", 1 1/8" diameter. This set includes a sturdy deburring tool and is delivered in a handy plastic case. Using hydraulic power this lightweight expander makes a perfect expansion of copper and aluminium tubing with only a few pumps.

This tool offers you the following features:

- Easy single hand operation:  
Hydraulic mechanism and release button make one-handed swages possible. Simply select the correct laser-engraved expander head, thread it on the tool and make a quality swage.
- Small space capable:  
A compact, pistol shape allows it to fit into the smallest and hard to reach spots.
- 120° angle:  
Requires less power to pump, provides a natural wrist angle.
- Interchangeable heads:  
Fits all common HVAC/R size copper tubing.  
Compatible with REFCO expander systems:  
Perfect accessory to upgrade existing manual expander kits.
- Includes deburring tool RFA-209-STYLO-HD:  
Allows easy installation for expander heads.

#### Specifications:

Dimensions:	Length: 10", width: 1.75", height: 5"
Weight:	2.6 lbs
Tube materials:	Soft tubing only: copper, aluminium, brass

**Part No. 4687047**



### HY-OIL

Hydraulic oil for HY-EX, 50 ml

**Part No. 4687579**



## Spare heads

Spare heads	Spare heads	Part No.
Designation		
HY-EX-1/4"	1/4"	4687344
HY-EX-5/16"	5/16"	4687346
HY-EX-3/8"	3/8"	4687367
HY-EX-1/2"	1/2"	4687366
HY-EX-5/8"	5/8"	4687365
HY-EX-3/4"	3/4"	4687368
HY-EX-7/8"	7/8"	4687369
HY-EX-1"	1"	4687345
HY-EX-1 1/8"	1 1/8"	4687370
HY-EX-1 1/4"	1 1/4"	4687478
HY-EX-1 3/8"	1 3/8"	4687347
HY-EX-1 1/2"	1 1/2"	4687477
HY-EX-1 5/8"	1 5/8"	4687348



HY-EX-6

## Expander Tool Set

Designation	Description	Part No.
<b>14297-RF</b>	Expander tool set. Complete with expander plier and 6 heads in steel box. Tube sizes $\frac{3}{8}$ ", $\frac{1}{2}$ ", $\frac{5}{8}$ ", $\frac{3}{4}$ ", $\frac{7}{8}$ " and $1\frac{1}{8}$ " diameter	<b>4677817</b>

Spare heads		Part No.
Designation		
<b>14297-RF-<math>\frac{3}{8}</math>"</b>	$\frac{3}{8}$ "	<b>4669709</b>
<b>14297-RF-<math>\frac{1}{2}</math>"</b>	$\frac{1}{2}$ "	<b>4669717</b>
<b>14297-RF-<math>\frac{5}{8}</math>"</b>	$\frac{5}{8}$ "	<b>4669726</b>
<b>14297-RF-<math>\frac{3}{4}</math>"</b>	$\frac{3}{4}$ "	<b>4669734</b>
<b>14297-RF-<math>\frac{7}{8}</math>"</b>	$\frac{7}{8}$ "	<b>4669742</b>
<b>14297-RF-1"</b>	1"	<b>4669750</b>
<b>14297-RF-<math>1\frac{1}{8}</math>"</b>	$1\frac{1}{8}$ "	<b>4669768</b>
<b>14297-RF-<math>1\frac{3}{8}</math>"</b>	$1\frac{3}{8}$ "	<b>4669776</b>
<b>14297-RF-<math>1\frac{5}{8}</math>"</b>	$1\frac{5}{8}$ "	<b>4669785</b>



**14297-RF**

# Tools

## Punch Type Swaging Tools

Designation	Description	Part No.
	(Tube inside diameter)	
<b>T21002</b>	1/8"	<b>9881620</b>
<b>T21003</b>	3/16"	<b>9881619</b>
<b>T21004</b>	1/4"	<b>9881618</b>
<b>T21005</b>	5/16"	<b>9881617</b>
<b>T21006</b>	3/8"	<b>9881616</b>
<b>T21007</b>	7/16"	<b>9881615</b>
<b>T21008</b>	1/2"	<b>9881614</b>
<b>T21010</b>	5/8"	<b>9881613</b>
<b>T21012</b>	3/4"	<b>9881612</b>
<b>T21014</b>	7/8"	<b>9881611</b>
<b>T21018</b>	1 1/8"	<b>9881610</b>
<b>T21000</b>	Complete set of seven tools from 1/8" to 1/2"	<b>9881609</b>
<b>T21100</b>	Complete Bar covers all sizes from 1/8" to 1/2" in one tool	<b>9881608</b>



Designation	Description	Part No.
<b>TW-8</b>	The complete torque wrenches kit in a handy case Torque: 10-80 ft/lbs Size of wrenches: 17, 19, 22, 24, 26, 27, 29 mm	<b>4666034</b>



TW-8



## General Tools



RFA-124-C



RFA-127-C



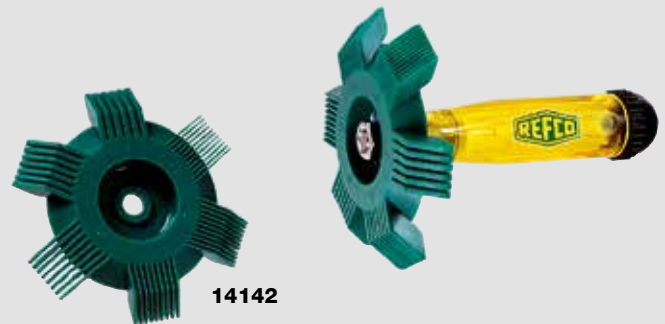
RFA-127-OFFSET



KKS-38

KKS-38

Designation	Description	Part No.
RFA-124-C	Ratchet wrench. Hex openings 1/2" and 5/16" on one end and square 3/16" and 1/4" on the other end	9881467
RFA-127-C	Ratchet wrench. 1/4" by 3/16" at one end and 3/8" by 5/16" at the other end	9881466
RFA-127-OFFSET	Offset wrench	4506201
KKS-38	Ratchet wrench with extendable reversible L-shape handle, ideal if space is tight, 3/8" square. Blister packaging.	4667413



14142



14144

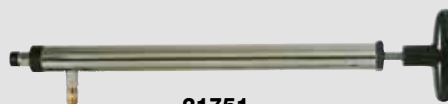


14225

Designation	Description	Part No.
14142	Fin comb, 6 in 1 with sizes marked on the comb. <b>Comes with additional spare head in bag</b>	9881562
14144	Fin comb for cleaning and straightening fins quickly and easily. Adjustable tension	9881561
14225	Circular pocket mirror, telescopic 1 1/2" diameter	9881560
21702	REFCO charging oil pump. Pumps one quart of oil in 20 strokes	9881559
21751	Change oil pump	9881557



21702



21751

# Tools

## Access Valve Tools for 1/4" SAE

Designation	Description	Part No.
<b>32515</b>	Charging and evacuation valve key for fluid filling or withdrawal through Schrader valves. Increases speed of recovery and charging	<b>9880894</b>
<b>32520</b>	Valve core replacing tool	<b>9880893</b>
<b>32520-555</b>	O-ring set complete	<b>9880892</b>
<b>A-32000</b>	Valve core tool. Contains 6 extra cores and one extra core remover and tap	<b>9880890</b>

## Access Valve Tools for 5/16" SAE

Designation	Description	Part No.
<b>32515-1/2"</b> <b>-20UNF (5/16" SAE)</b>	Charging and evacuation valve key for fluid filling by Schrader valves. Saves about 50% of usual service time	<b>4660915</b>
<b>32520-1/2"</b> <b>-20UNF (5/16" SAE)</b>	Valve core replacing tool	<b>4660923</b>
<b>32520-1/2"</b> <b>-20UNF (5/16" SAE)-555</b>	o-ring set complete	<b>4661245</b>
<b>A-33410</b>	Access control valve R410A	<b>4681645</b>

## Solenoid Valve Operating Magnet

- The quickest and easiest way to operate solenoid valves manually
- Converts electronically operated solenoid valves into hand operated valves in seconds
- Proven design that fits about 90% of solenoid valves
- Opening is 18 mm or 0.75 inch

Designation	Description	Part No.
<b>SVOM-18</b>	Solenoid valve operating magnet	<b>4660507</b>

## Access Valves - 1/4" SAE

Designation	Description	Part No.
<b>A-31004/10</b>	Extended copper tube, diameter 1/4" Packaged 10 per	<b>9883544</b>
<b>A-31006/10</b>	With swaged tube suitable for 3/8" diameter Packaged 10 per	<b>9884830</b>
<b>A-33010</b>	Access control valve	<b>4681636</b>
<b>NFT5-4/10</b>	Quick seal 1/4" SAE flare cap with gasket Packaged 10 per	<b>9884244</b>
<b>NFT-118/10</b>	Quick seal cap with built-in core remover 1/4" SAE Packaged 10 per	<b>9884961</b>



32515



32520



A-32000



SVOM-18



A-31004



NFT5-4



NFT-118



A-33010

## INVERTER CHECK-KIT

The Inverter Check-Kit is an invaluable tool for the analysis of problems with Duct Free Mini Split Systems. The kit is designed to be used in both installation and maintenance of Duct Free Systems.

The Inverter Check-Kit performs two basic functions. First it will tell you if the phase outputs in the inverter are operating correctly. Secondly, the data flow function tells you if there is data flowing in both directions between the indoor and outdoor sections. Since inverters are controlled by solid state boards that do multiple functions, the Inverter Check-Kit will tell you if there is a bad board and help you identify if the indoor, outdoor or both boards are not functioning correctly.

The inverter phase checker will indicate whether the Inverter board is faulty and by implication (if the inverter works then the compressor must be faulty) whether the compressor is faulty but it will not work if there are faults on both.

The kit comes complete with the electronic module with a set of leads for testing the serial communication links, as well as a selection of cables and connectors for the power output terminals of the inverter.

Designation	Dimension	Part No.
<b>INVERTER-CHECK-KIT</b>	3.19 x 2.87 x 1.10 inch	<b>4678571</b>



**INVERTER-CHECK-KIT**



## 16868

Ergonomic Piezo igniting head brazing torch for propane and Map Pro gas cylinder.

- Pressure adjustment function
- Safety locking system
- Focused cyclone flame with high temperature
- Removable flame diffuser

**16868**

**Part No. 4684066**



## TOOLBAG

Superior quality tool bag designed with the professional trades person in mind. It provides maximum convenience and durability suitable for even the most demanding work environments.

- Large pockets for quick and easy access
- 600 Denier polyester cordura
- Lightweight design
- Reinforced points of wear
- Strong handle

**Part No. 4683078**



**TOOLBAG**



# Part No. Index

Part No.	Designation	Pg	Part No.	Designation	Pg
1212648	M2-001	23	4506589	BM2-6-F-R410A-CCL-72	34
4490976	M4-6-09-B	44	4506597	BM2-3-F-R410A-CCL-72	34
4490984	M4-6-09-N	44	4506601	BM2-3-F-Auto-Set-R134a-RC	37
4491000	M4-6-09-Y	44	4506627	BM4-3-F-R12	35
4491018	M4-6-11	45	4506643	BM4-3-F-R22	35
4492936	CA-CL-36-Y	49	4506759	M2-3-DELUXE-F-R134a-CCL-60	39
4492944	CA-CL-60-B	49	4506848	MK-2-3-F-R12	41
4492952	CA-CL-60-R	49	4506856	MK-2-3-F-R134a	41
4492961	CA-CL-60-Y	49	4507061	GM2-8-F-R12	36
4492979	CA-CL-72-B	49	4507071	GM2-8-F-R134a	36
4492987	CA-CL-72-R	49	4507100	GM2-6-F-R12-CCL-60	36
4492995	CA-CL-72-Y	49	4507118	GM2-6-F-R134a-CCL-60	36
4493169	M4-6-11-T	45	4507356	RL-8	12
4493525	CA-1/4"SAE-B	49	4507445	RL-8-303	13
4493533	CA-1/4"SAE-R	49	4507577	ES-02	54
4493614	CA-CCL-36	48	4507607	RL-8-3000	13
4493622	CA-CCL-60	48	4507615	RL-8-3011	13
4493631	CA-CCL-72	48	4507623	RL-8-3060	13
4493738	CA-1/4"SAE-Y	49	4507631	RL-8-4071	13
4493916	R5-220-F-R12	27	4507640	RL-8-4000	13
4493924	R5-320-F-R12	27	4507658	RL-8-2A	13
4495340	DV-44	15	4507674	RL-4-3000	13
4495358	DV-45	15	4507682	RL-4-3011	13
4495366	DV-46	15	4507917	STARTEK	54
4495421	CPV-CCL-60	50	4508203	RL-8-426	13
4495471	RL-2/4-303	13	4530152	KM2-250-F-R12	22
4496761	RL-4/8-310	13	4530161	KM2-500-F-R12	22
4496770	RL-2/4/8-415	13	4530179	KM2-250-F-R134a	22
4503261	BM2-6-F-R410A	34	4530187	KM2-500-F-R134a	22
4503350	KM2-001	22	4660507	SVOM-18	70
4505051	RL-4-406	13	4660664	STARTEK-C	55
4505239	BM2-3-F-R410A	34	4660672	ES-C	55
4505417	KM2-250-F-R22	22	4660915	32515-1/2"-20UNF (5/16" SAE)	70
4505425	KM2-500-F-R22	22	4660923	32520-1/2"-20UNF (5/16" SAE)	70
4505433	BM2-3-F-R410A-CCL-60	34	4661040	RL-2-406	13
4505477	M4-3-DELUXE-F-R12-CCL-60	40	4661245	32520-1/2"-20UNF (5/16" SAE)-555	70
4505710	BM2-6-F-R410A-CCL-60	34	4661423	RL-2/4-3060	13
4505809	M2-3-DELUXE-F-R12-CCL-60	39	4661474	RL-4-4000	13
4505817	M2-8-DELUXE-F-R12	39	4661482	RL-2-2A	13
4506171	RF-888-Z	64	4661538	RL-2-4000	13
4506198	RF-175-FS	64	4661589	RL-2-3000	13
4506201	RFA-127-OFFSET	69	4661597	RL-2-3011	13
4506490	BM2-8-F-R22	34	4661601	RL-2	12
4506502	BM2-6-F-R22	34	4661954	RL-4-2A	13
4506520	BM2-6-F-R22-CCL-60	34	4662399	R3-220-F-R410A-FG	26
4506554	BM2-6-F-R22-CCL-72	34	4662403	R3-320-F-R410A-FG	26
4506562	BM2-3-F-R22	34	4662526	BM2-6-F-R410A-FG-CCL-60	34
4506571	BM2-8-F-R410A	34	4662535	BM2-8-F-R410A-FG	34
			4662543	M2-3-DELUXE-F-R410A-FG-CCL-60	39
			4662624	M4-6-04-R/10	45
			4663239	POWERMAX	18
			4663247	OZ-4000	19
			4663727	M2-3-DELUXE-F-R410A-FG-CA-CCL-60	39
			4664333	STARTEK-CASE	54
			4665118	A-31452-Y	45
			4665305	BM2-6-F-R410A-FG-CA-CCL-60	34
			4665550	14210-01/10	63
			4665593	STARTEK-C-CASE	55
			4666034	TW-8	68
			4666076	TELL-7	65
			4666106	M4-6-15	45
			4666726	M4-6-04-JUMBO	45
			4667413	KKS-38	69
			4667472	R3-220-F-R22	26
			4667480	R3-320-F-R22	26
			4667498	M2-8-DELUXE-F-R22	39
			4667510	M2-3-DELUXE-F-R22-CCL-60	39
			4667685	ECO-5	14
			4667757	ECO-3/5/9-1	15
			4667774	ECO-3/5/9-3	15
			4667782	ECO-3/5/9-4	15
			4667790	ECO-3/5/9-5	15
			4667820	ECO-3/5/9-8	15
			4668028	RL-2-64	13
			4668036	RL-4-64	13
			4668045	RL-8-64	13
			4668053	RL-4/8-65	13
			4668109	JUMBO-STAR-2-3-F-R12	42
			4668117	JUMBO-STAR-2-3-F-R134a	42
			4668533	CCL-60-CA	48
			4668559	CCL-36-CA	48
			4669407	TELL-7-LB	65
			4669416	TELL-7-SB	65
			4669432	TELL-7-BA-1/4"	65
			4669440	TELL-7-BA-5/16"	65
			4669458	TELL-7-BA-3/8"	65
			4669466	TELL-7-BA-1/2"	65
			4669475	TELL-7-BA-5/8"	65
			4669483	TELL-7-BA-3/4"	65
			4669491	TELL-7-BA-7/8"	65
			4669513	TELL-7-HANDLE	65
			4669661	ECO-9	14
			4669679	TELL-7-AD	65
			4669709	14297-RF-3/8"	67
			4669717	14297-RF-1/2"	67
			4669726	14297-RF-5/8"	67
			4669734	14297-RF-3/4"	67
			4669742	14297-RF-7/8"	67
			4669750	14297-RF-1"	67
			4669768	14297-RF-1 1/8"	67
			4669776	14297-RF-1 3/8"	67
			4669785	14297-RF-1 5/8"	67

Part No.	Designation	Pg	Part No.	Designation	Pg	Part No.	Designation	Pg
4669997	M4-3-DELUXE-F-R410A-FG-CCL-60	40	4677451	M2-GS	45	4686280	APEX-7-F-R410A-FG-CA-CCL-60	33
4670406	1997-1	18	4677621	BR-4IN1	63	4686417	JUMBO-STAR-2-3-F-R410A-FG	42
4670406	1997-1	19	4677817	14297-RF	67	4686663	OCTA-WIRELESS	56
4670414	ALF-032	18	4678571	INVERTER-CHECK-KIT	71	4686697	LP-88	59
4670414	ALF-032	19	4678911	ECO-3-9	15	4686703	TRACE-LOCATOR-TV-01	53
4670562	3000-60	18	4678929	ECO-5-9	15	4686705	REF-LOCATOR-TV-01	52
4670562	3000-60	19	4678937	ECO-9-9	15	4686707	REF-LOCATOR-CASE	52
4671011	400-15	18	4678946	ECO-3-10	15	4686708	TRACE-LOCATOR-CASE	53
4671011	400-15	19	4678954	ECO-5-10	15	4686712	REF-VAC	29
4671526	2070-10	18	4678962	ECO-9-10	15	4686713	DIGIMON-VAC	30
4671526	2070-10	19	4678970	ECO-3-11	15	4686714	REF-LOCATOR	52
4671801	3000-9-1	19	4678988	ECO-5-11	15	4686715	TRACE-LOCATOR	53
4672441	3000-72	18	4678996	ECO-9-11	15	4686730	DIGIMON-SE-CASE	30
4672441	3000-72	19	4679462	REF-METER-OCTA	57	4686742	OCTA-WIRELESS-KIT	56
4674079	2277	18	4679705	REF-SCOPE	60	4686749	DIGIMON-SE-8	31
4674079	2277	19	4680079	GPK-35-04	58	4686750	DIGIMON-SE-3	31
4674087	1997-10	18	4680087	GPK-35-02	58	4686752	OCTA-WIRELESS-CONTROL-BOX	56
4674087	1997-10	19	4680096	GPK-35-01	58	4686813	REF-METER-OCTA-CONTROL-BOX	57
4674096	3000-73	18	4680109	GPK-35-03	58	4686821	LOCATOR-FILTER/5	52
4674096	3000-73	19	4680117	GPK-35-SIGHT-GLASS	58	4686821	LOCATOR-FILTER/5	53
4674478	CONTROL-KNOB	18	4681394	DIGIMON-SENSOR-K-TYPE	30	4686828	LOCATOR-LED-WHITE/6	52
4674681	AA-30	18	4681466	DIGIMON-CLAMP	30	4686828	LOCATOR-LED-WHITE/6	53
4674681	AA-30	19	4681466	DIGIMON-CLAMP	59	4686904	RS-67	62
4674699	AA-50	18	4681636	A-33010	70	4687034	LOCATOR-LED-UV/6	52
4674699	AA-50	19	4681645	A-33410	70	4687034	LOCATOR-LED-UV/6	53
4675288	M5-250-F-R410A-FG	25	4681823	REF-METER-OCTA-PLUS	56	4687047	HY-EX-6	66
4675296	M5-500-F-R410A-FG	25	4681989	REF-METER-OCTA-KIT	57	4687051	RFA-209-STYLO-HD	63
4675300	R5-220-F-R410A-FG	27	4682039	CA-CL-9-Y-M	49	4687065	RFA-209-01/3	62
4675318	R5-320-F-R410A-FG	27	4682047	CA-CL-9-R-M	49	4687065	RFA-209-01/3	63
4675326	BM4-3-F-R410A-FG	35	4682056	CA-CL-9-B-M	49	4687078	19805-12/2	28
4675335	BM4-3-F-R410A-FG-CCL-60	35	4682293	REF-CLASS-GAUGE	43	4687079	M2-7-SET-B+R	44
4675343	SM2-8-F-R410A-FG	38	4682692	ECO-5-DV	14	4687080	M2-6-09-B+R	44
4675351	SM2-6-F-R410A-FG-CCL-60	38	4682722	RS-16	62	4687093	M4-6-04-R/4	45
4675369	SM2-3-F-R410A-FG-CCL-60	38	4682730	RS-25	62	4687094	M4-7-SET-B-N-R-Y	44
4675377	APEX-7-F-R12	33	4682748	RS-35	62	4687095	QC-S410A/2	47
4675386	APEX-7-F-R22	33	4682756	RS-42	62	4687097	RS-001/3	62
4675394	APEX-7-F-R134a	33	4683078	TOOL-BAG	71	4687098	19803/2	28
4675407	APEX-7-F-R410A-FG	33	4683477	GPK-35	58	4687104	M2-10-95-R/2	44
4675416	APEX-7-F-R12-CCL-60	33	4683507	REF-SCOPE-MIRROR	61	4687105	M2-10-95-R/4	44
4675424	APEX-7-F-R22-CCL-60	33	4683516	REF-SCOPE-HOOK	61	4687141	T6-4/5	29
4675432	APEX-7-F-R134a-CCL-60	33	4683524	REF-SCOPE-MAGNET	61	4687344	HY-EX-1/4"	66
4675440	APEX-7-F-R410A-FG-CCL-60	33	4683532	REF-SCOPE-CLEAN	61	4687345	HY-EX-1""	66
4675458	APEX-9-F-R12	33	4684066	16868	71	4687346	HY-EX-5/16"	66
4675466	APEX-9-F-R22	33	4684512	CPV-DS	50	4687347	HY-EX-1 3/8"	66
4675475	APEX-9-F-R134a	33	4684580	ECO-3/5-20N	15	4687348	HY-EX-1 5/8"	66
4675483	APEX-9-F-R410A-FG	33	4684589	DIGIMON-SE-3-CLAMP	31	4687365	HY-EX-5/8"	66
4675491	M2-8-DELUXE-F-R410A-FG	39	4684590	DIGIMON-SE-3-CLAMP-VAC	31	4687366	HY-EX-1/2"	66
4676110	NFT5-4-K-Green	15	4684591	DIGIMON4-3-CLAMP-VAC	31	4687367	HY-EX-3/8"	66
4676128	NFT5-6-K-Green	15	4684593	ENVIRO	16	4687368	HY-EX-3/4"	66
4677451	M2-GS	23	4684604	ECO-9-20	15	4687369	HY-EX-7/8"	66
4677451	M2-GS	35	4684605	ENVIRO-DUO	17	4687370	HY-EX-1 1/8"	66

Part No.	Designation	Pg	Part No.	Designation	Pg	Part No.	Designation	Pg
4687453	M2-250-F-R410A/R32	23	9881527	14200	63	9884722	CL-60-Y-J2196	47
4687454	M2-500-F-R410A/R32	23	9881528	RFA-105-FF	63	9884723	CL-60-R-J2196	47
4687455	APEX-7-F-R410A/R32-CCL-60	33	9881530	14285	63	9884724	CL-60-B-J2196	47
4687477	HY-EX-1 1/2"	66	9881557	21751	69	9884725	CL-72-Y-J2196	47
4687478	HY-EX-1 1/4"	66	9881559	21702	69	9884726	CL-72-R-J2196	47
4687579	HY-OIL	66	9881560	14225	69	9884727	CL-72-B-J2196	47
4687631	SWIVEL-ARM-1/4"SAE-N	29	9881561	14144	69	9884728	CCL-36-J2196	47
7218188	M2-250-F-R410A-FG	23	9881562	14142	69	9884729	CCL-60-J2196	47
7218358	M2-500-F-R410A-FG	23	9881571	525-F	64	9884730	CCL-72-J2196	47
7635083	M2-250-F-R22	23	9881575	RF-275-FS	64	9884813	A-40513/10	51
7635147	M2-500-F-R22	23	9881608	T21100	68	9884830	A-31006/10	70
7714013	GR-220-F-R12	24	9881609	T21000	68	9884847	V-R-B-001/10	37
7714064	GR-220-F-R134a	24	9881610	T21018	68	9884848	V-R-R-002/10	37
7714098	GR-320-F-R12	24	9881611	T21014	68	9884948	RC01-R	37
7714102	GR-320-F-R134a	24	9881612	T21012	68	9884949	RC01-B	37
7829168	M2-250-F-R12	23	9881613	T21010	68	9884961	NFT-118/10	70
7829567	M2-500-F-R12	23	9881614	T21008	68			
7829982	M2-250-F-R410A	23	9881615	T21007	68			
7830000	M2-500-F-R410A	23	9881616	T21006	68			
9880869	P-513/10	47	9881617	T21005	68			
9880870	P-510/10	51	9881618	T21004	68			
9880871	P-509-T/10	47	9881619	T21003	68			
9880872	P-509/10	47	9881620	T21002	68			
9880890	A-32000	70	9881622	14338	62			
9880892	32520-555	70	9881637	BS-12	64			
9880893	32520	70	9881638	BS-10	64			
9880894	32515	70	9881639	BS-8	64			
9881087	14215	63	9881640	BS-7	64			
9881230	CPV-60-Y	50	9881641	BS-6	64			
9881235	CPV-60-B	50	9881642	BS-5	64			
9881240	CPV-60-R	50	9881648	BS-4	64			
9881250	CL-72-B	46	9881649	RFA-209	63			
9881251	CL-60-B	46	9881657	RFA-368-FH	65			
9881252	CL-48-B	46	9881665	RFA-364-FH-12	65			
9881253	CL-36-B	46	9881666	RFA-364-FH-10	65			
9881259	CL-72-R	46	9881667	RFA-364-FH-08	65			
9881260	CL-60-R	46	9882473	19800-SV	28			
9881261	CL-48-R	46	9882474	19801	28			
9881262	CL-36-R	46	9882584	M4-6-10	44			
9881268	CL-72-Y	46	9883544	A-31004/10	70			
9881269	CL-60-Y	46	9883750	RFA-209-STYLO	63			
9881270	CL-48-Y	46	9884244	NFT5-4/10	70			
9881271	CL-36-Y	46	9884365	DT-150	59			
9881275	CCL-72	46	9884439	BM2-8-F-R134a	34			
9881276	CCL-60	46	9884479	R3-220-F-R12	26			
9881277	CCL-48	46	9884480	R3-320-F-R12	26			
9881278	CCL-36	46	9884481	R3-220-F-R134a	26			
9881313	HCL6-60-Y	51	9884482	R3-320-F-R134a	26			
9881466	RFA-127-C	69	9884719	CL-36-Y-J2196	47			
9881467	RFA-124-C	69	9884720	CL-36-R-J2196	47			
9881526	14210	63	9884721	CL-36-B-J2196	47			



# Designation Index

Designation	Part No.	Pg	Designation	Part No.	Pg
14142	9881562	69	400-15	4671011	19
14144	9881561	69	525-F	9881571	64
14200	9881527	63	A-31004/10	9883544	70
14210	9881526	63	A-31006/10	9884830	70
14210-01/10	4665550	63	A-31452-Y	4665118	45
14215	9881087	63	A-32000	9880890	70
14225	9881560	69	A-33010	4681636	70
14285	9881530	63	A-33410	4681645	70
14297-RF	4677817	67	A-40513/10	9884813	51
14297-RF-1 1/8"	4669768	67	AA-30	4674681	18
14297-RF-1 3/8"	4669776	67	AA-30	4674681	19
14297-RF-1 5/8"	4669785	67	AA-50	4674699	18
14297-RF-1"	4669750	67	AA-50	4674699	19
14297-RF-1/2"	4669717	67	ALF-032	4670414	18
14297-RF-3/4"	4669734	67	ALF-032	4670414	19
14297-RF-3/8"	4669709	67	APEX-7-F-R12	4675377	33
14297-RF-5/8"	4669726	67	APEX-7-F-R12-CCL-60	4675416	33
14297-RF-7/8"	4669742	67	APEX-7-F-R134a	4675394	33
14338	9881622	62	APEX-7-F-R134a-CCL-60	4675432	33
16868	4684066	71	APEX-7-F-R22	4675386	33
19800-SV	9882473	28	APEX-7-F-R22-CCL-60	4675424	33
19801	9882474	28	APEX-7-F-R410A/R32-CCL-60	4687455	33
19803/2	4687098	28	APEX-7-F-R410A-FG	4675407	33
19805-12/2	4687078	28	APEX-7-F-R410A-FG-CA-CCL-60	4686280	33
1997-1	4670406	18	APEX-7-F-R410A-FG-CCL-60	4675440	33
1997-1	4670406	19	APEX-9-F-R12	4675458	33
1997-10	4674087	18	APEX-9-F-R134a	4675475	33
1997-10	4674087	19	APEX-9-F-R22	4675466	33
2070-10	4671526	18	APEX-9-F-R410A-FG	4675483	33
2070-10	4671526	19	BM2-3-F-Auto-Set-R134a-RC	4506601	37
21702	9881559	69	BM2-3-F-R22	4506562	34
21751	9881557	69	BM2-3-F-R410A	4505239	34
2277	4674079	18	BM2-3-F-R410A-CCL-60	4505433	34
2277	4674079	19	BM2-3-F-R410A-CCL-72	4506597	34
3000-60	4670562	18	BM2-6-F-R22	4506502	34
3000-60	4670562	19	BM2-6-F-R22-CCL-60	4506520	34
3000-72	4672441	18	BM2-6-F-R22-CCL-72	4506554	34
3000-72	4672441	19	BM2-6-F-R410A	4503261	34
3000-73	4674096	18	BM2-6-F-R410A-CCL-60	4505710	34
3000-73	4674096	19	BM2-6-F-R410A-CCL-72	4506589	34
3000-9-1	4671801	19	BM2-6-F-R410A-FG-CA-CCL-60	4665305	34
32515	9880894	70	BM2-6-F-R410A-FG-CCL-60	4662526	34
32515-1/2"-20UNF (5/16" SAE)	4660915	70	BM2-8-F-R134a	9884439	34
32520	9880893	70	BM2-8-F-R22	4506490	34
32520-1/2"-20UNF (5/16" SAE)	4660923	70	BM2-8-F-R410A	4506571	34
32520-1/2"-20UNF (5/16" SAE)-555	4661245	70	BM2-8-F-R410A-FG	4662535	34
32520-555	9880892	70	BM4-3-F-R12	4506627	35
400-15	4671011	18	BM4-3-F-R22	4506643	35
			BM4-3-F-R410A-FG	4675326	35
			BM4-3-F-R410A-FG-CCL-60	4675335	35
			BR-4IN1	4677621	63
			BS-10	9881638	64
			BS-12	9881637	64
			BS-4	9881648	64
			BS-5	9881642	64
			BS-6	9881641	64
			BS-7	9881640	64
			BS-8	9881639	64
			CA-1/4"SAE-B	4493525	49
			CA-1/4"SAE-R	4493533	49
			CA-1/4"SAE-Y	4493738	49
			CA-CCL-36	4493614	48
			CA-CCL-60	4493622	48
			CA-CCL-72	4493631	48
			CA-CL-36-Y	4492936	49
			CA-CL-60-B	4492944	49
			CA-CL-60-R	4492952	49
			CA-CL-60-Y	4492961	49
			CA-CL-72-B	4492979	49
			CA-CL-72-R	4492987	49
			CA-CL-72-Y	4492995	49
			CA-CL-9-B-M	4682056	49
			CA-CL-9-R-M	4682047	49
			CA-CL-9-Y-M	4682039	49
			CCL-36	9881278	46
			CCL-36-CA	4668559	48
			CCL-36-J2196	9884728	47
			CCL-48	9881277	46
			CCL-60	9881276	46
			CCL-60-CA	4668533	48
			CCL-60-J2196	9884729	47
			CCL-72	9881275	46
			CCL-72-J2196	9884730	47
			CL-36-B	9881253	46
			CL-36-B-J2196	9884721	47
			CL-36-R	9881262	46
			CL-36-R-J2196	9884720	47
			CL-36-Y	9881271	46
			CL-36-Y-J2196	9884719	47
			CL-48-B	9881252	46
			CL-48-R	9881261	46
			CL-48-Y	9881270	46
			CL-60-B	9881251	46
			CL-60-B-J2196	9884724	47
			CL-60-R	9881260	46
			CL-60-R-J2196	9884723	47
			CL-60-Y	9881269	46
			CL-60-Y-J2196	9884722	47
			CL-72-B	9881250	46
			CL-72-B-J2196	9884727	47
			CL-72-R	9881259	46
			CL-72-R-J2196	9884726	47

Designation	Part No.	Pg	Designation	Part No.	Pg	Designation	Part No.	Pg
CL-72-Y	9881268	46	GPK-35-02	4680087	58	M2-3-DELUXE-F-R12-CCL-60	4505809	39
CL-72-YJ2196	9884725	47	GPK-35-03	4680109	58	M2-3-DELUXE-F-R134a-CCL-60	4506759	39
CONTROL-KNOB	4674478	18	GPK-35-04	4680079	58	M2-3-DELUXE-F-R22-CCL-60	4667510	39
CPV-60-B	9881235	50	GPK-35-SIGHT-GLASS	4680117	58	M2-3-DELUXE-F-R410A-FG-CA-CCL-60	4663727	39
CPV-60-R	9881240	50	GR-220-F-R12	7714013	24	M2-3-DELUXE-F-R410A-FG-CCL-60	4662543	39
CPV-60-Y	9881230	50	GR-220-F-R134a	7714064	24	M2-500-F-R12	7829567	23
CPV-CCL-60	4495421	50	GR-320-F-R12	7714098	24	M2-500-F-R22	7635147	23
CPV-DS	4684512	50	GR-320-F-R134a	7714102	24	M2-500-F-R410A	7830000	23
DIGIMON4-3-CLAMP-VAC	4684591	31	HCL6-60-Y	9881313	51	M2-500-F-R410A/R32	4687454	23
DIGIMON-CLAMP	4681466	30	HY-EX-1 1/2"	4687477	66	M2-500-F-R410A-FG	7218358	23
DIGIMON-CLAMP	4681466	59	HY-EX-1 1/4"	4687478	66	M2-6-09-B+R	4687080	44
DIGIMON-SE-3	4686750	31	HY-EX-1 1/8"	4687370	66	M2-7-SET-B+R	4687079	44
DIGIMON-SE-3-CLAMP	4684589	31	HY-EX-1 3/8"	4687347	66	M2-8-DELUXE-F-R12	4505817	39
DIGIMON-SE-3-CLAMP-VAC	4684590	31	HY-EX-1 5/8"	4687348	66	M2-8-DELUXE-F-R22	4667498	39
DIGIMON-SE-8	4686749	31	HY-EX-1"	4687345	66	M2-8-DELUXE-F-R410A-FG	4675491	39
DIGIMON-SE-CASE	4686730	30	HY-EX-1/2"	4687366	66	M2-GS	4677451	23
DIGIMON-SENSOR-K-TYPE	4681394	30	HY-EX-1/4"	4687344	66	M2-GS	4677451	35
DIGIMON-VAC	4686713	30	HY-EX-3/4"	4687368	66	M2-GS	4677451	45
DT-150	9884365	59	HY-EX-3/8"	4687367	66	M4-3-DELUXE-F-R12-CCL-60	4505477	40
DV-44	4495340	15	HY-EX-5/16"	4687346	66	M4-3-DELUXE-F-R410A-FG-CCL-60	4669997	40
DV-45	4495358	15	HY-EX-5/8"	4687365	66	M4-6-04-JUMBO	4666726	45
DV-46	4495366	15	HY-EX-6	4687047	66	M4-6-04-R/10	4662624	45
ECO-3/5/9-1	4667757	15	HY-EX-7/8"	4687369	66	M4-6-04-R/4	4687093	45
ECO-3/5/9-3	4667774	15	HY-OIL	4687579	66	M4-6-09-B	4490976	44
ECO-3/5/9-4	4667782	15	INVERTER-CHECK-KIT	4678571	71	M4-6-09-N	4490984	44
ECO-3/5/9-5	4667790	15	JUMBO-STAR-2-3-F-R12	4668109	42	M4-6-09-Y	4491000	44
ECO-3/5/9-8	4667820	15	JUMBO-STAR-2-3-F-R134a	4668117	42	M4-6-10	9882584	44
ECO-3/5-20N	4684580	15	JUMBO-STAR-2-3-F-R410A-FG	4686417	42	M4-6-11	4491018	45
ECO-3-10	4678946	15	KKS-38	4667413	69	M4-6-11-T	4493169	45
ECO-3-11	4678970	15	KM2-001	4503350	22	M4-6-15	4666106	45
ECO-3-9	4678911	15	KM2-250-F-R12	4530152	22	M4-7-SET-B-N-R-Y	4687094	44
ECO-5	4667685	14	KM2-250-F-R134a	4530179	22	M5-250-F-R410A-FG	4675288	25
ECO-5-10	4678954	15	KM2-250-F-R22	4505417	22	M5-500-F-R410A-FG	4675296	25
ECO-5-11	4678988	15	KM2-500-F-R12	4530161	22	MK-2-3-F-R12	4506848	41
ECO-5-9	4678929	15	KM2-500-F-R134a	4530187	22	MK-2-3-F-R134a	4506856	41
ECO-5-DV	4682692	14	KM2-500-F-R22	4505425	22	NFT-118/10	9884961	70
ECO-9	4669661	14	LOCATOR-FILTER/5	4686821	52	NFT5-4/10	9884244	70
ECO-9-10	4678962	15	LOCATOR-FILTER/5	4686821	53	NFT5-4-K-Green	4676110	15
ECO-9-11	4678996	15	LOCATOR-LED-UV/6	4687034	52	NFT5-6-K-Green	4676128	15
ECO-9-20	4684604	15	LOCATOR-LED-UV/6	4687034	53	OCTA-WIRELESS	4686663	56
ECO-9-9	4678937	15	LOCATOR-LED-WHITE/6	4686828	52	OCTA-WIRELESS-CONTROL-BOX	4686752	56
ENVIRO	4684593	16	LOCATOR-LED-WHITE/6	4686828	53	OCTA-WIRELESS-KIT	4686742	56
ENVIRO-DUO	4684605	17	LP-88	4686697	59	OZ-4000	4663247	19
ES-02	4507577	54	M2-001	1212648	23	P-509/10	9880872	47
ES-C	4660672	55	M2-10-95-R/2	4687104	44	P-509-T/10	9880871	47
GM2-6-F-R12-CCL-60	4507100	36	M2-10-95-R/4	4687105	44	P-510/10	9880870	51
GM2-6-F-R134a-CCL-60	4507118	36	M2-250-F-R12	7829168	23	P-513/10	9880869	47
GM2-8-F-R12	4507061	36	M2-250-F-R22	7635083	23	POWERMAX	4663239	18
GM2-8-F-R134a	4507071	36	M2-250-F-R410A	7829982	23	QC-S410A/2	4687095	47
GPK-35	4683477	58	M2-250-F-R410A/R32	4687453	23	R3-220-F-R12	9884479	26
GPK-35-01	4680096	58	M2-250-F-R410A-FG	7218188	23	R3-220-F-R134a	9884481	26

Designation	Part No.	Pg	Designation	Part No.	Pg	Designation	Part No.	Pg
R3-220-F-R22	4667472	26	RL-2-64	4668028	13	TELL-7-BA-1/4"	4669432	65
R3-220-F-R410A-FG	4662399	26	RL-4/8-310	4496761	13	TELL-7-BA-3/4"	4669483	65
R3-320-F-R12	9884480	26	RL-4/8-65	4668053	13	TELL-7-BA-3/8"	4669458	65
R3-320-F-R134a	9884482	26	RL-4-2A	4661954	13	TELL-7-BA-5/16"	4669440	65
R3-320-F-R22	4667480	26	RL-4-3000	4507674	13	TELL-7-BA-5/8"	4669475	65
R3-320-F-R410A-FG	4662403	26	RL-4-3011	4507682	13	TELL-7-BA-7/8"	4669491	65
R5-220-F-R12	4493916	27	RL-4-4000	4661474	13	TELL-7-HANDLE	4669513	65
R5-220-F-R410A-FG	4675300	27	RL-4-406	4505051	13	TELL-7-LB	4669407	65
R5-320-F-R12	4493924	27	RL-4-64	4668036	13	TELL-7-SB	4669416	65
R5-320-F-R410A-FG	4675318	27	RL-8	4507356	12	TOOL-BAG	4683078	71
RC01-B	9884949	37	RL-8-2A	4507658	13	TRACE-LOCATOR	4686715	53
RC01-R	9884948	37	RL-8-3000	4507607	13	TRACE-LOCATOR-CASE	4686708	53
REF-CLASS-GAUGE	4682293	43	RL-8-3011	4507615	13	TRACE-LOCATOR-TV-01	4686703	53
REF-LOCATOR	4686714	52	RL-8-303	4507445	13	TW-8	4666034	68
REF-LOCATOR-CASE	4686707	52	RL-8-3060	4507623	13	V-R-B-001/10	9884847	37
REF-LOCATOR-TV-01	4686705	52	RL-8-4000	4507640	13	V-R-R-002/10	9884848	37
REF-METER-OCTA	4679462	57	RL-8-4071	4507631	13			
REF-METER-OCTA-CONTROL-BOX	4686813	57	RL-8-426	4508203	13			
REF-METER-OCTA-KIT	4681989	57	RL-8-64	4668045	13			
REF-METER-OCTA-PLUS	4681823	56	RS-001/3	4687097	62			
REF-SCOPE	4679705	60	RS-16	4682722	62			
REF-SCOPE-CLEAN	4683532	61	RS-25	4682730	62			
REF-SCOPE-HOOK	4683516	61	RS-35	4682748	62			
REF-SCOPE-MAGNET	4683524	61	RS-42	4682756	62			
REF-SCOPE-MIRROR	4683507	61	RS-67	4686904	62			
REF-VAC	4686712	29	SM2-3-F-R410A-FG-CCL-60	4675369	38			
RF-175-FS	4506198	64	SM2-6-F-R410A-FG-CCL-60	4675351	38			
RF-275-FS	9881575	64	SM2-8-F-R410A-FG	4675343	38			
RF-888-Z	4506171	64	STARTEK	4507917	54			
RFA-105-FF	9881528	63	STARTEK-C	4660664	55			
RFA-124-C	9881467	69	STARTEK-CASE	4664333	54			
RFA-127-C	9881466	69	STARTEK-C-CASE	4665593	55			
RFA-127-OFFSET	4506201	69	SVOM-18	4660507	70			
RFA-209	9881649	63	SWIVEL-ARM-1/4"SAE-N	4687631	29			
RFA-209-01/3	4687065	62	T21000	9881609	68			
RFA-209-01/3	4687065	63	T21002	9881620	68			
RFA-209-STYLO	9883750	63	T21003	9881619	68			
RFA-209-STYLO-HD	4687051	63	T21004	9881618	68			
RFA-364-FH-08	9881667	65	T21005	9881617	68			
RFA-364-FH-10	9881666	65	T21006	9881616	68			
RFA-364-FH-12	9881665	65	T21007	9881615	68			
RFA-368-FH	9881657	65	T21008	9881614	68			
RL-2	4661601	12	T21010	9881613	68			
RL-2/4/8-415	4496770	13	T21012	9881612	68			
RL-2/4-303	4495471	13	T21014	9881611	68			
RL-2/4-3060	4661423	13	T21018	9881610	68			
RL-2-2A	4661482	13	T21100	9881608	68			
RL-2-3000	4661589	13	T6-4/5	4687141	29			
RL-2-3011	4661597	13	TELL-7	4666076	65			
RL-2-4000	4661538	13	TELL-7-AD	4669679	65			
RL-2-406	4661040	13	TELL-7-BA-1/2"	4669466	65			



# Swiss manifold

HVAC/R  
Service Products



## With premium Bourdon Type Gauges

Gauge internals are all brass no plastic pieces

2 3/4" outside ø

Accuracy class 1.6



## Color-coded

For easy high and low side identification



Zero point adjustable



REFCO branded knobs

## All REFCO hoses are SWISS Made

- Suitable for all common refrigerants
- Supplied with neoprene gaskets
- Available sizes: 36", 60", 72"



Handwheel

Complete valve set including piston

High quality brass body made in Switzerland

  
**SWISSMADE**

## Warranty policy:

Products are warranted at the time of sale, to be free of defects due to manufacturing workmanship and materials and/or operation due to normal operating conditions. If products are found defective within 2 years of factory shipment, the factory must be called before executing the warranty. This warranty does not cover defects due to improper installation, failure to exercise normal maintenance, or against the consequences or uses for which our products are not designed. REFCO's sole expressed obligation(s) is to repair, replace or issue credit at our option, any of the products determined by REFCO to have been defective during the expressed warranty period. Unless otherwise specified by REFCO or an

authorized agent all products must be returned to REFCO to be considered for warranty purpose(s). Labor and installation charges of any kind are not covered under this warranty. Products repaired or replaced under this warranty are warranted only through the remainder of the original warranty. An RMA # is required for any item considered for warranty. This express warranty is in lieu of and excludes all other express or implied warranties, guarantees, or representations, merchantability and fitness for a particular purpose, by operation of law or otherwise. REFCO shall not be liable for any indirect or consequential damages of any nature whatsoever.



World Headquarters:  
**REFCO Manufacturing Ltd.**  
Industriestrasse 11  
6285 Hitzkirch - Switzerland

Phone: 011 41 41 919 72 82  
Fax: 011 41 41 919 72 83

info@refco.ch  
www.refco.ch

North American Headquarters:  
**REFCO Manufacturing (US) Inc.**  
66 B Industry Avenue  
Springfield MA 01104

Phone: 413 739 4761  
Fax: 413 733 9267

sales@refcoswiss.com  
www.refcoswiss.com  
www.refco.com

**24/7 customer service:**  
**1 800 848 4232**

**HVAC/R  
Service Products**

