

INSPECTORS: THIS IS AN IR CAMERA YOU'LL WANT TO INSPECT.

RevealXR[™]
FASTFRAME

LONG-RANGE THERMAL IMAGING CAMERA AND 300 LUMEN LED LIGHT

Durable, all-in-one thermal imager, with a 20-degree field of view and 900 ft detection range, making it the perfect tool to easily, accurately and safely inspect any job site. Loaded with FastFrame imaging for smooth scanning and inspection.



206 x 156
Thermal
Sensor



20°
Field of
View



-40 °F to 626 °F
Detection
Range



900 ft
Distance



Works
Day & Night



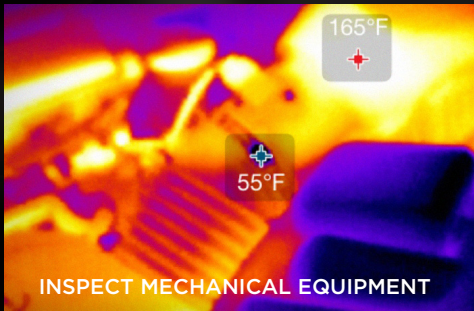
Seek[™]
thermal

thermal.com



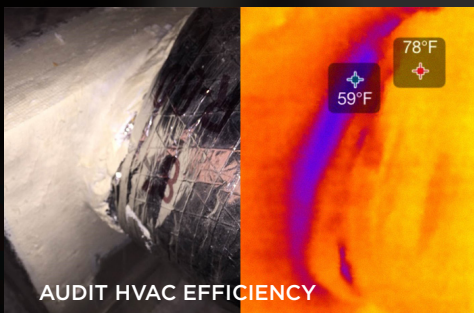
PERFORMANCE FOCUSED

- 900-foot detection distance simplifying electrical utility work
- 206 x 156 Thermal Sensor accurately identifies overheating motors
- Powerful 300 Lumen Light to for use in tight spaces
- FastFrame imaging displays more than 15 frames per second, providing smooth thermal imaging



LONG-RANGE DETECTION THAT'S EASY TO USE

- Intuitive, single-handed interface
- Library of color palettes to customize the built-in display
- Micro SD card for photo capture and USB transfer
- Lasts up to 10 hours in continuous thermal imaging mode



SEEK A NEW ADVANTAGE

- Quick startup provides instant detection
- Accurate inspection for mechanical, electrical and building applications
- Safely examine any job site in light or total darkness
- Stay safer by quickly and easily detecting single handedly

SPECIFICATIONS

DETECTOR & OPTICS

Thermal Sensor	206 x 156
Detection Distance	900 feet (300 yards, 275 meters)
Field of View	20 Degree FOV
Temperature Range	-40F to 626F (-40C to 330C)
Frame Rate	> 15 Hz FastFrame
Focus	Fixed Focus
Lens Material	Chalcogenide
Microbolometer	Vanadium Oxide
Pixel Pitch	12 Microns
Spectral Range	7.5 - 14 Microns

SYSTEM SPECS

Flashlight	300 Lumen LED (programmable brightness)
Display Resolution	2.4" Color, 240 x 320
Temp. Display Scale	Fahrenheit or Celsius
Color Palettes	7 Options
Startup Time	< 3 seconds
User Interface	Self-contained device with 3 button navigation
Storage Media	MicroSD Card Included
Battery	3.7V Rechargeable lithium
Battery Life (operating)	Up to 10 hours continuous thermal

DEVICE & PACKAGE INFO

Country of Origin	Designed and manufactured in Santa Barbara, California, USA with global components
Color	Black
Device Dimensions (H x W x D)	5 x 2.4 x 1.2 inches
Device Weight	6.25 ounces
Box Dimensions (H x W x D)	6.25 x 3.75 x 3.25 inches
Package Weight	18.5 ounces
Included in the box	Seek RevealXR, Welcome Guide, Wrist Lanyard, MicroSD Card, and USB Cable

For support and user guides visit support.thermal.com



RevealXR™
FASTFRAME

SUBJECT TO U.S. EAR EXPORT REGULATIONS

Seek™
thermal

thermal.com