

HOW DO HUNTERS KNOW THEY'RE HOT ON A TRAIL? THERMAL IMAGING, OF COURSE.

RevealXR™

EXTRA RANGE THERMAL IMAGING CAMERA AND 300 LUMEN LED LIGHT

Durable, all-in-one thermal imager, with a narrow 20-degree field of view that provides a thermal detection range up to 900 feet, making it perfect for outdoor use.



206x156
Thermal
Sensor



20°
Field of
View



-40° F to 626° F
Detection
Range



900 ft
Distance



Works
Day & Night



seek™
thermal

THERMAL.COM



SCOUT

PERFORMANCE FOCUSED

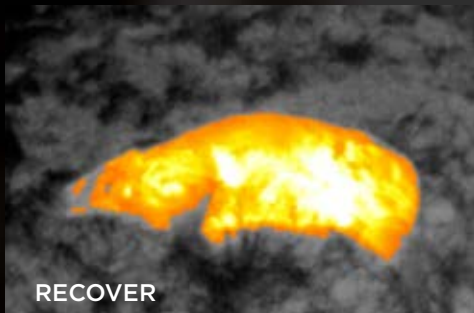
- 900-foot detection distance for tracking any time
- 206 x 156 Thermal Sensor for accurate prey spotting
- Powerful 300 Lumen Light for hunting safety and visibility



TRACK

LONG-RANGE DETECTION THAT'S EASY TO USE

- Quick startup provides instant detection
- Intuitive, single-handed interface
- Library of color palettes to customize the built-in display
- MicroSD card for photo capture and USB transfer



RECOVER

SEEK A NEW ADVANTAGE

- Accurately scout terrain from afar
- Track and recover day or night
- Stay safe without giving position away



RevealXR™
MSRP \$449 USD

SPECIFICATIONS	DESCRIPTION
DETECTOR & OPTICS	
Thermal Sensor	206 x 156
Detection Distance	900 feet (300 yards, 275 meters)
Field of View	20 Degree FOV
Temperature Range	-40F to 626F (-40C to 330C)
Frame Rate	< 9 Hz
Focus	Fixed Focus
Lens Material	Chalcogenide
Microbolometer	Vanadium Oxide
Distance to Spot Ratio	94:1
Temperature Accuracy	Greater of 5% (or 5 degrees C)
Pixel Pitch	12 Microns
Spectral Range	7.5 - 14 Microns
SYSTEM SPECS	
Flashlight	300 Lumen LED (programmable brightness)
Display Resolution	2.4" Color, 240 x 320
Temp. Display Scale	Fahrenheit or Celsius
Color Palettes	7 Options
Startup Time	< 3 seconds
User Interface	Self-contained device with 3 button navigation
Storage Media Included	Starter MicroSD Card (stores more than 10,000 images)
Battery	3.7V Rechargeable lithium
Battery Life (operating)	10+ Hour continuous thermal
DEVICE & PACKAGE INFO	
Country of Origin	Designed and manufactured in Santa Barbara, California USA with global components
Color	Camo or Black
Device Dimensions (H x W x D)	5 x 2.4 x 1.2 inches
Device Weight	6.25 ounces
Box Dimensions (H x W x D)	6.25 x 3.75 x 3.25 inches
Package Weight	18.5 ounces
Included in the box	Seek RevealXR, Welcome Guide, Wrist Lanyard, MicroSD Card and USB Cable

For support and user guides visit
support.thermal.com

Seek™
thermal

THERMAL.COM