

# SYSTEMA

Systema Range

## General Features

### Consist of:

2X SS  
1X SP10

### Colours:

Silver and Anodised Aluminium

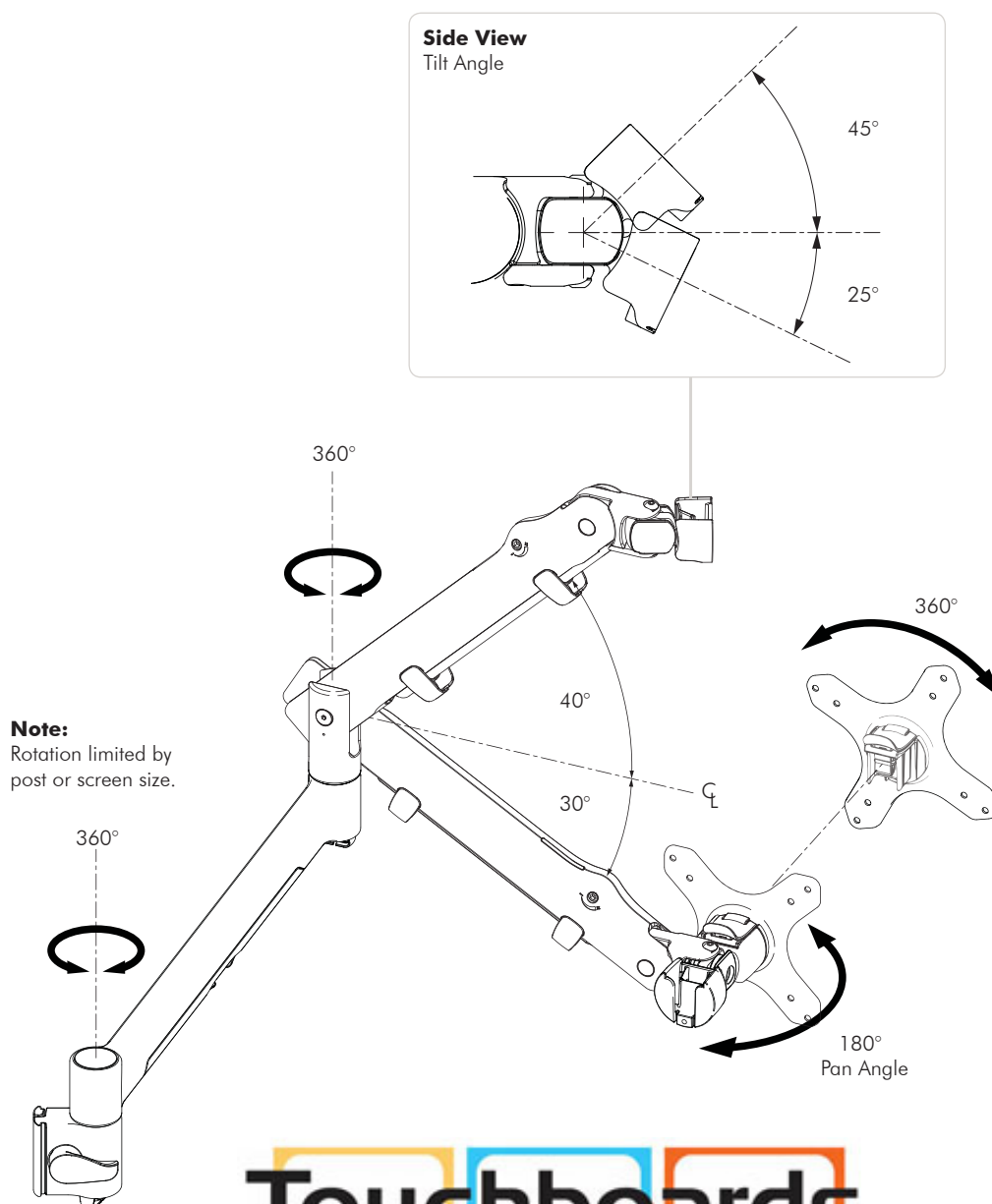
### Max Load:

8kg (17.64 lbs) per arm

### Warranty:

10 years limited

## Range Of Movement



# Touchboards

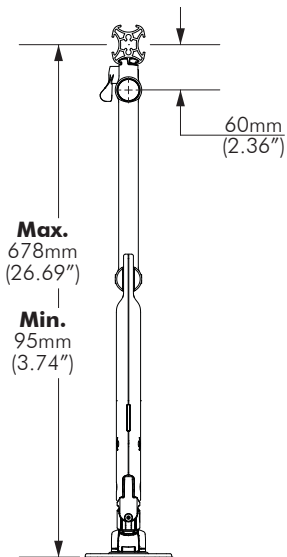
205 Westwood Ave, Long Branch, NJ 07740

Phone: 866-94 BOARDS (26273) / (732)-222-1511

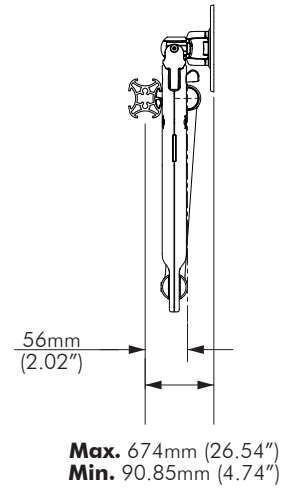
Fax: (732)-222-7088 | E-mail: [sales@touchboards.com](mailto:sales@touchboards.com)

## Monitor Spring Arm | Range of Movement - Arm Extension

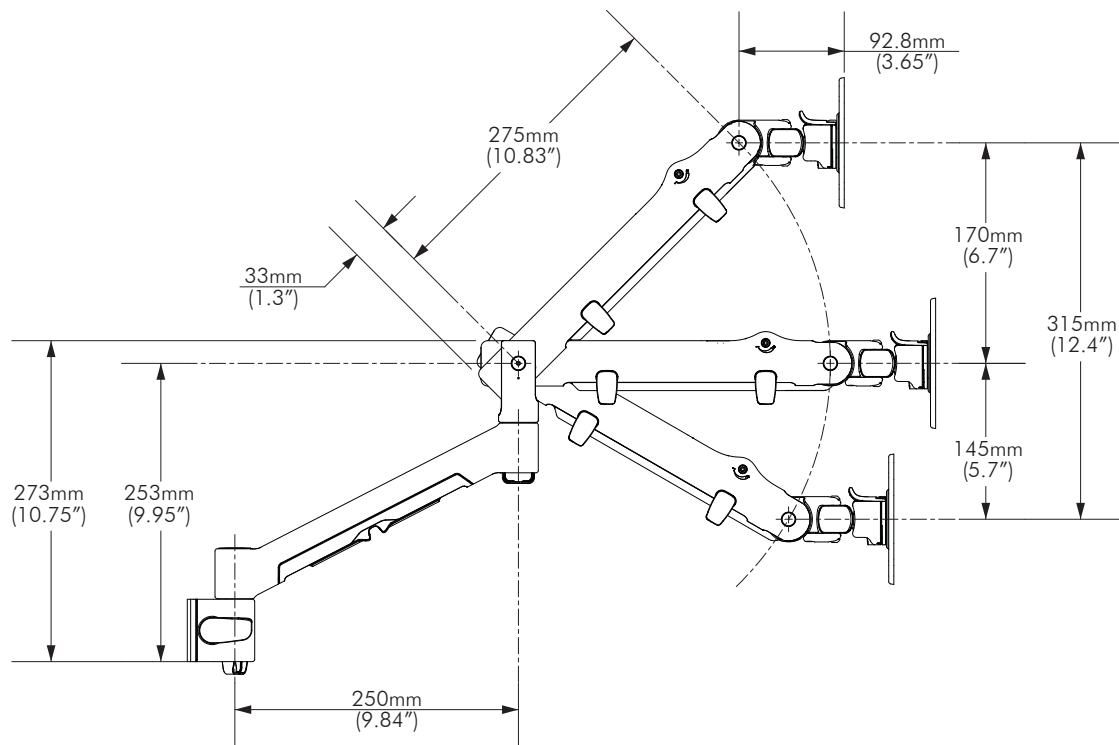
**Front Attachment**  
(Maximum Extension shown)



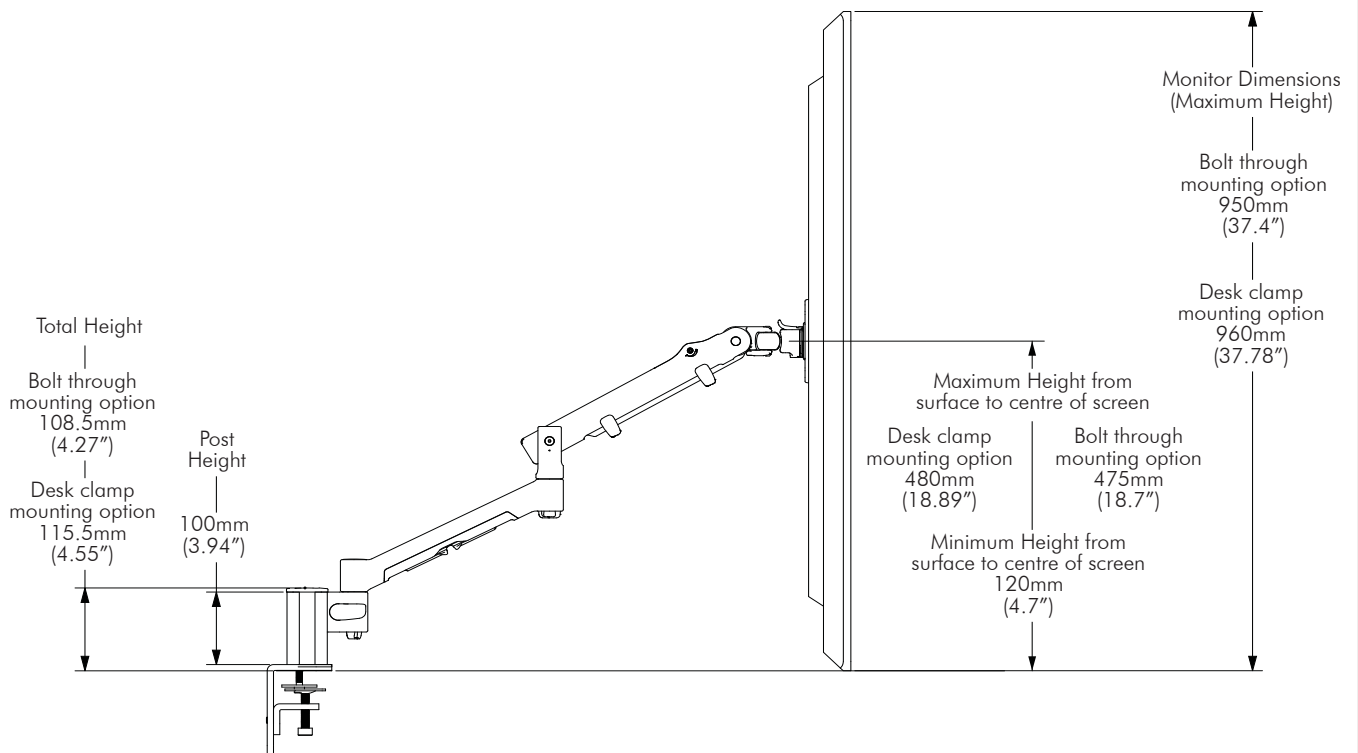
**Side Attachment**  
(Minimum Extension shown)



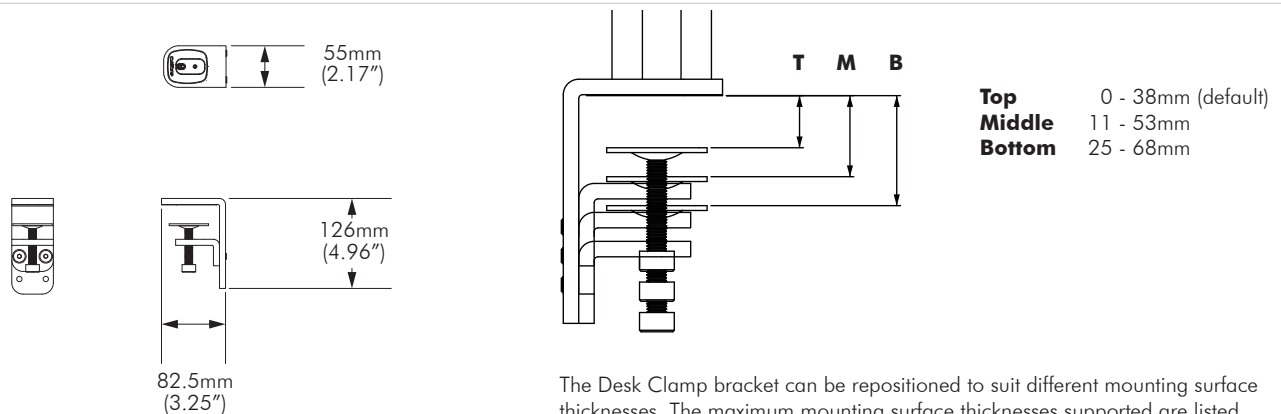
## Monitor Spring Arm | Range of movement - Arm Dimensions



## Side View



## Desk Clamp Mounting Options-Dimensions



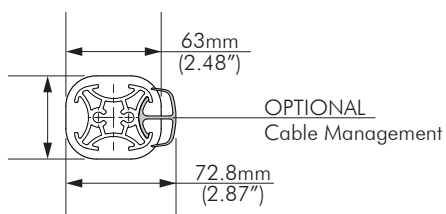
The Desk Clamp bracket can be repositioned to suit different mounting surface thicknesses. The maximum mounting surface thicknesses supported are listed above from the Top to Middle to Bottom Screw Holes.

**Important!** Any mounting surface must be capable of supporting the combined weight of all Systema products and attached monitors/devices. If in doubt, contact your mounting surface supplier.

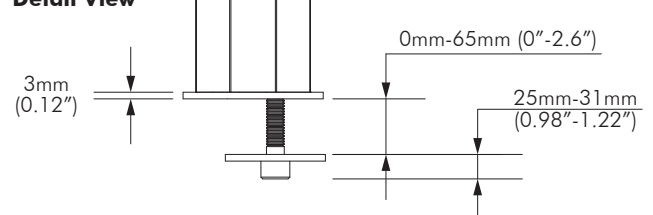
## Bolt Through Mounting Options- Dimensions

### Top View

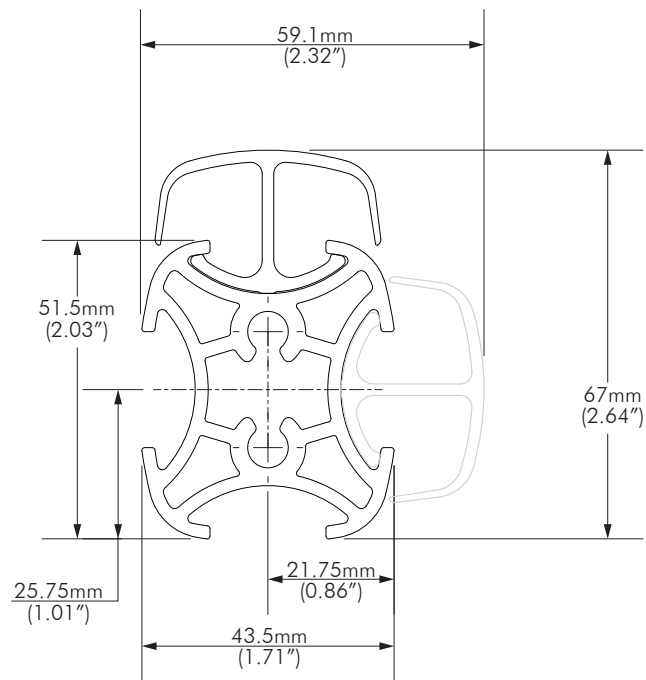
Bolt Through Desk Plate



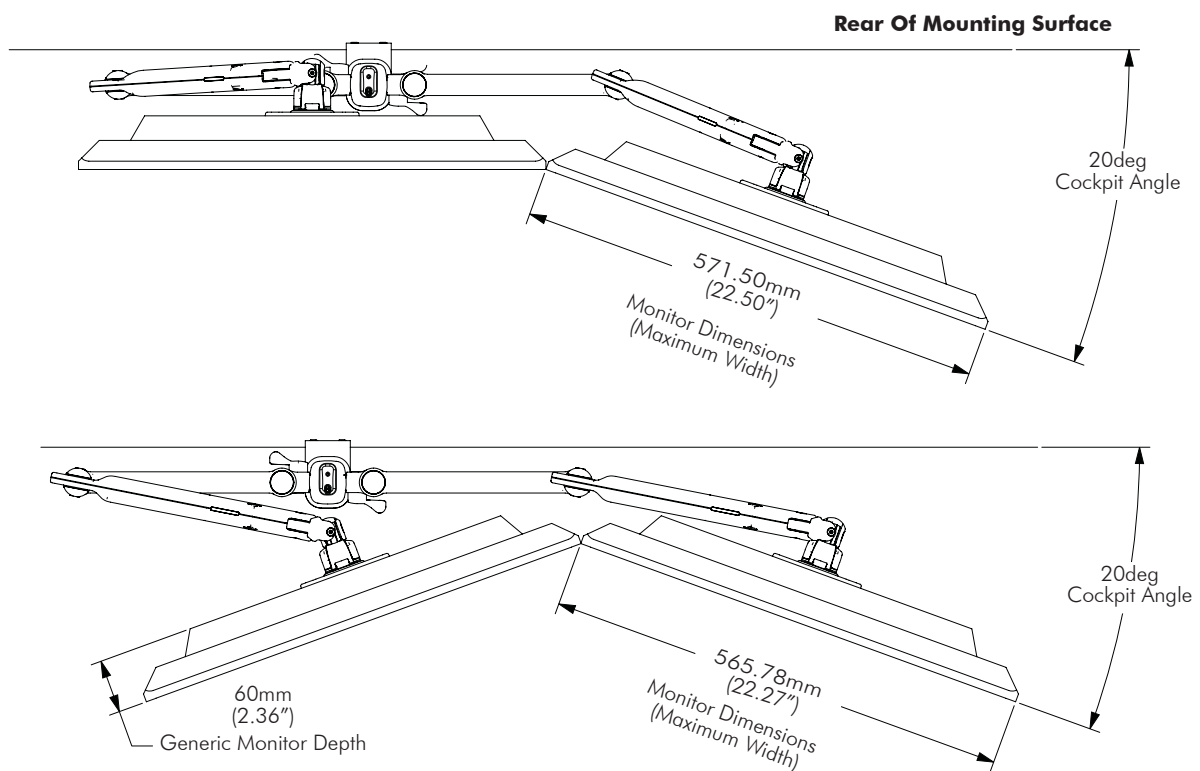
### Detail View



## Post Cross Section - Dimensions

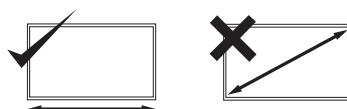


## Plan View



Note:

- 1) All dimensions are dependant on the size and shape of the monitor used.
- 2) Monitor dimensions (maximum width) relates to the actual width of a monitor not the diagonal viewing size.



## VESA Mounting Bracket

