

TECHNICAL DATA SHEET - **SmartMount**[®] Universal Flat Wall Mount for 61" to 102" Flat Panel Screens

peerless[®]

MODELS: SF680, SF680P, SF680-S, SF680P-S


The sturdy SF680 wall plate holds screens weighing up to 350 lb while featuring junction box access ports and horizontal screen adjustment up to 8" for ideal screen positioning. Its easy-glide brackets enable quick screen-to-mount attachment with its simple hook-on design. Delivering an ultra-slim profile, this mount is the ultimate in low-profile solutions for 61" to 102" flat panel screens.

Features:

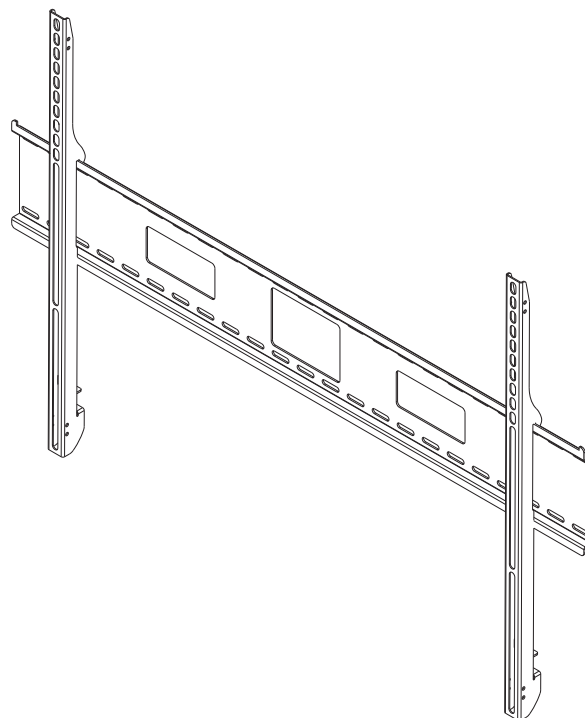
- Fits screens with mounting hole patterns up to 43.75" W x 29.31" H
- Ultra-slim design holds screen only 1.83" from the wall for a clean application
- Easy-glide bracket design ensures screen is securely attached to wall plate
- Horizontal screen adjustment up to 8"
- Mounts to wood studs, concrete, cinder block or metal studs (metal stud accessory required)
- Includes Peerless' Sorted-For-You™ fastener pack with all necessary mounting and screen attachment hardware

Accessories:

- Metal Stud Fastener Kit (ACC415 & ACC215)
- Video Conferencing Shelf (ACC309)
- Accessory Shelves (DS600)
- Middle Rail Accessory (ACC680F)

Touchboards

205 Westwood Ave, Long Branch, NJ 07740
Phone: 866-94 BOARDS (26273) / (732)-222-1511
Fax: (732)-222-7088 | E-mail: sales@touchboards.com



Dimensions:

Weight:
14.3 lb (6.5 kg)

Shipping weight:
16.5 lb (7.5 kg)

Maximum Load Capacity:
350 lb (158.8 kg)

Shipping Carton dimensions:

L= 46.75 in (1187 mm)
W= 8.63 in (219 mm)
H= 3.88 in (99 mm)

ARCHITECTS SPECIFICATIONS

The Smartmount[®] Universal Flat Wall Mount shall be a Peerless model _____ and shall be located where indicated on the plans. It shall be constructed of heavy gauge cold rolled steel and finished with scratch resistant Black or Silver Fused Epoxy. Assembly and installation shall be done according to instructions provided by the manufacturer.

Peerless Industries, Inc.
3215 W. North Ave. Melrose Park, IL 60160
708-865-8870 800-865-2112 Fax 708-865-2941
www.peerlessmounts.com

ISSUED: 01-17-06 SHEET NO: 201-9769-4 04-23-08

©2008, Peerless Industries, Inc. All rights reserved.
All other brand and product names are trademarks or registered trademarks of their respective owners.

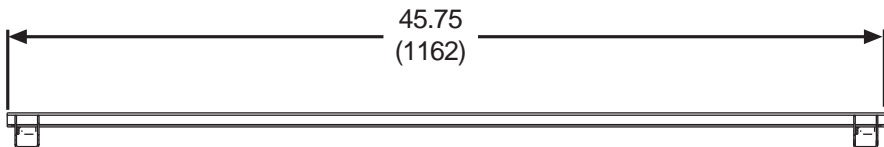
TECHNICAL DATA SHEET

MODELS: SF680, SF680-S, SF680P, SF680P-S

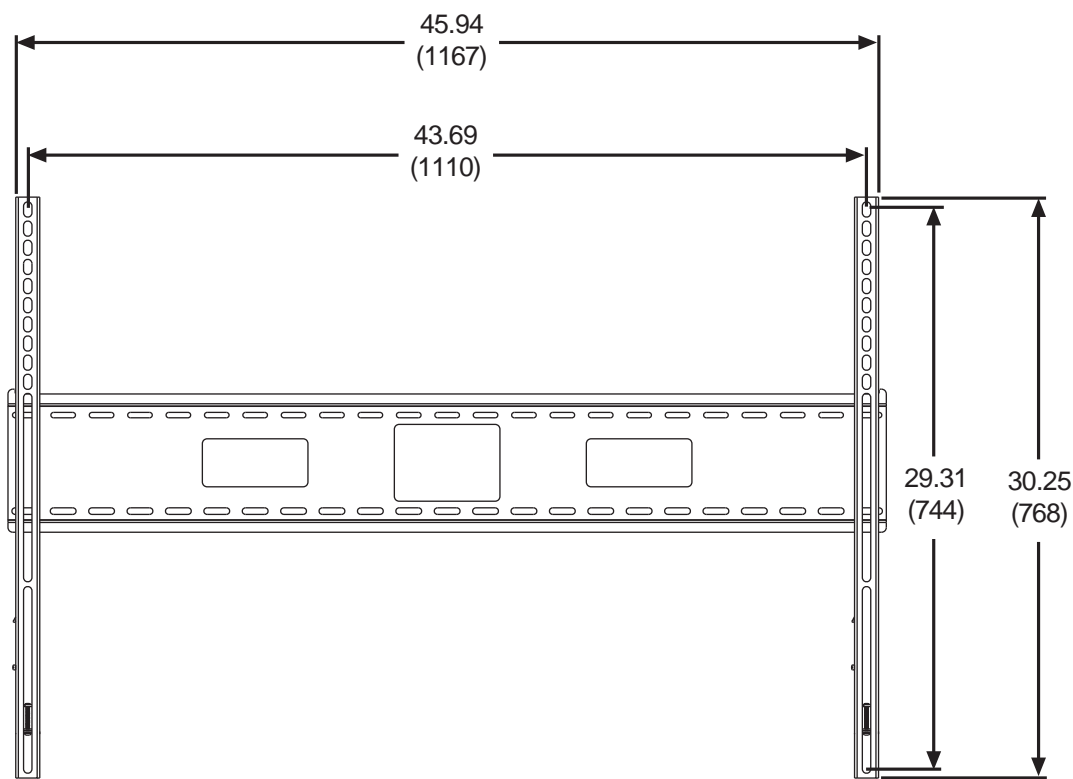
ALL DIMENSION = INCH
(MM)



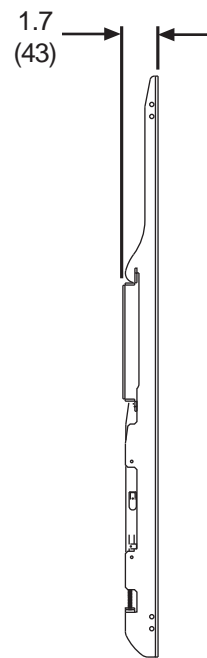
205 Westwood Ave, Long Branch, NJ 07740
Phone: 866-94 BOARDS (26273) / (732)-222-1511
Fax: (732)-222-7088 | E-mail: sales@touchboards.com



TOP VIEW



FRONT VIEW

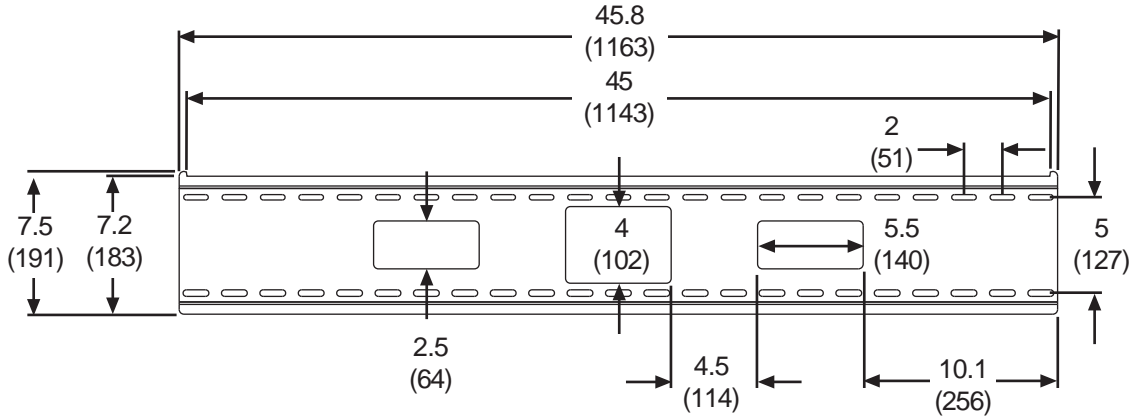


SIDE VIEW

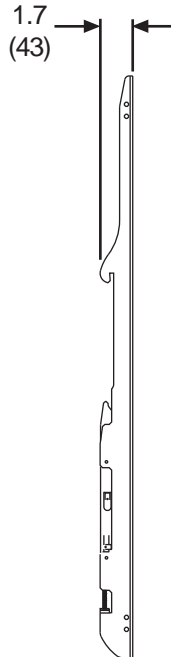
TECHNICAL DATA SHEET

ALL DIMENSION = INCH
(MM)

MODELS: SF680, SF680-S, SF680P, SF680P-S



WALL PLATE DETAIL



WALL PLATE DETAIL

205 Westwood Ave, Long Branch, NJ 07740
Phone: 866-94 BOARDS (26273) / (732)-222-1511
Fax: (732)-222-7088 | E-mail: sales@touchboards.com

Peerless Industries, Inc.
3215 W. North Ave. Melrose Park, IL 60160
708-865-8870 800-865-2112 Fax 708-865-2941
www.peerlessmounts.com

ISSUED: 01-17-06 SHEET NO: 201-9769-4 04-23-08

©2008, Peerless Industries, Inc. All rights reserved.
All other brand and product names are trademarks or registered trademarks of their respective owners.