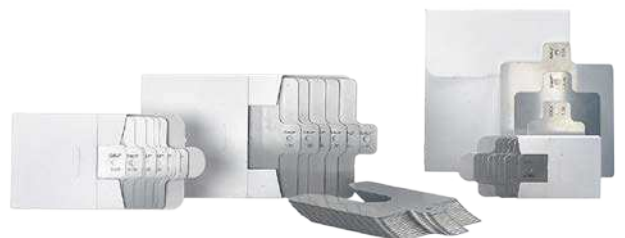


For accurate vertical machinery alignment

## SKF Machinery Shims TMAS inch series

Accurate machine adjustment is an essential element of any alignment process. SKF single slot pre-cut shims with thicknesses in imperial units are available in four different dimensions and in nine different thicknesses.

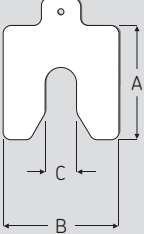
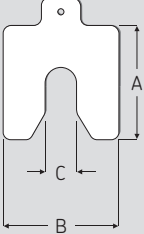
- Made of high quality stainless steel (grade 304S31), allowing re-use
- Easy to fit and to remove
- Close tolerances for accurate alignment
- Thickness clearly marked on each shim in imperial and metric units
- Fully de-burred
- Pre-cut shims are supplied in packs of 10 or kit assortments



Note: These shims are intended for the North American market.



## Technical data

Designation	Number of shims per set	A	B	C	Thickness	Designation	Number of shims per set	A	B	C	Thickness		
		in.	in.	in.	in.			in.	in.	in.	in.		
	TMAS 2-002	10	2	2	0.51	0.002		TMAS 4-002	10	4	4	1.26	0.002
	TMAS 2-005	10	2	2	0.51	0.005		TMAS 4-005	10	4	4	1.26	0.005
	TMAS 2-010	10	2	2	0.51	0.010		TMAS 4-010	10	4	4	1.26	0.010
	TMAS 2-020	10	2	2	0.51	0.020		TMAS 4-020	10	4	4	1.26	0.020
	TMAS 2-025	10	2	2	0.51	0.025		TMAS 4-025	10	4	4	1.26	0.025
	TMAS 2-050	10	2	2	0.51	0.050		TMAS 4-050	10	4	4	1.26	0.050
	TMAS 2-075	10	2	2	0.51	0.075		TMAS 4-075	10	4	4	1.26	0.075
	TMAS 2-100	10	2	2	0.51	0.100		TMAS 4-100	10	4	4	1.26	0.100
	TMAS 2-125	10	2	2	0.51	0.125		TMAS 4-125	10	4	4	1.26	0.125
	TMAS 3-002	10	3	3	0.83	0.002		TMAS 5-002	10	5	5	1.77	0.002
TMAS 3-005	10	3	3	0.83	0.005	TMAS 5-005	10	5	5	1.77	0.005		
TMAS 3-010	10	3	3	0.83	0.010	TMAS 5-010	10	5	5	1.77	0.010		
TMAS 3-020	10	3	3	0.83	0.020	TMAS 5-020	10	5	5	1.77	0.020		
TMAS 3-025	10	3	3	0.83	0.025	TMAS 5-025	10	5	5	1.77	0.025		
TMAS 3-050	10	3	3	0.83	0.050	TMAS 5-050	10	5	5	1.77	0.050		
TMAS 3-075	10	3	3	0.83	0.075	TMAS 5-075	10	5	5	1.77	0.075		
TMAS 3-100	10	3	3	0.83	0.100	TMAS 5-100	10	5	5	1.77	0.100		
TMAS 3-125	10	3	3	0.83	0.125	TMAS 5-125	10	5	5	1.77	0.125		



Designation	Size (inch)	Thickness (inch)								
		0.002	0.005	0.010	0.020	0.025	0.050	0.075	0.100	0.125
TMAS 4IN/KIT	4 × 4	20	20	20	20	20	20	20	20	10
TMAS 5IN/KIT	5 × 5	20	20	20	20	20	20	20	20	10
TMAS 340IN *	4 × 4	20	20	20	20	20	20	20	20	10
	5 × 5	20	20	20	20	20	20	20	20	10
TMAS 360IN	2 × 2	20	20	20	–	20	20	–	20	–
	3 × 3	20	20	20	–	20	20	–	20	–
	4 × 4	20	20	20	–	20	20	–	20	–
TMAS 380IN	2 × 2	20	20	20	20	20	20	20	20	10
	3 × 3	20	20	20	20	20	20	20	20	10
TMAS 510IN *	2 × 2	20	20	20	20	20	20	20	20	10
	3 × 3	20	20	20	20	20	20	20	20	10
	4 × 4	20	20	20	20	20	20	20	20	10
TMAS 680IN **	2 × 2	20	20	20	20	20	20	20	20	10
	3 × 3	20	20	20	20	20	20	20	20	10
	4 × 4	20	20	20	20	20	20	20	20	10
	5 × 5	20	20	20	20	20	20	20	20	10

\* Supplied in two carrying cases / \*\* Supplied in three carrying cases

© SKF is a registered trademark of the SKF Group.

© SKF Group 2015

The contents of this publication are the copyright of the publisher and may not be reproduced (even extracts) unless prior written permission is granted. Every care has been taken to ensure the accuracy of the information contained in this publication but no liability can be accepted for any loss or damage whether direct, indirect or consequential arising out of the use of the information contained herein.

PUB MP/P8 14392 EN · January 2015

