

Quick start guide

SKF Vibracon

re-adjustable steel chock

Benefits:

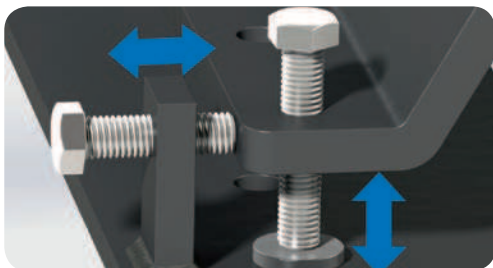
- Eliminate the “Soft Foot”
- Save installation time
- Self leveling
- Re-adjustable / re-useable
- Chock fast, no curing
- No special installation skills required



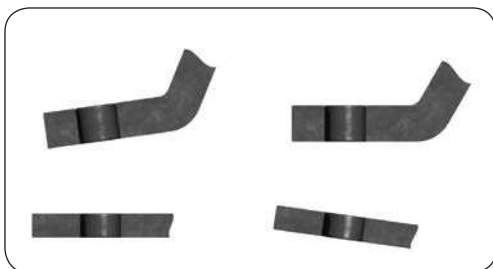
1. Alignment check of the component



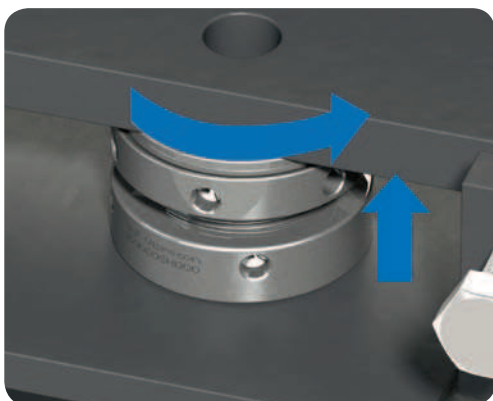
2. Adjustment of the component



3. Outcome of the adjustment: gaps to fill



4. Installation check



5. Foundation check



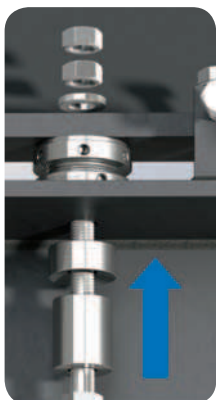
6. Installation of the SKF Vibracon



7. Batch number in sight/front for traceability



8. Installation of bolts



9. Adjustment to height



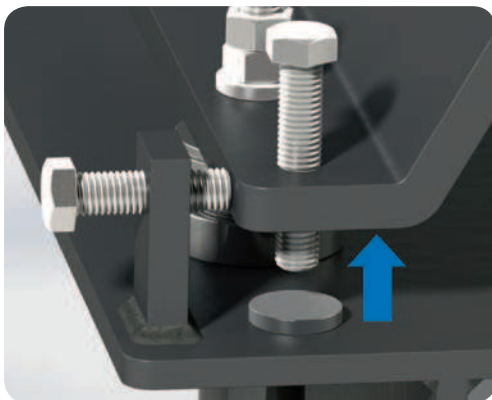
10. Check contact area



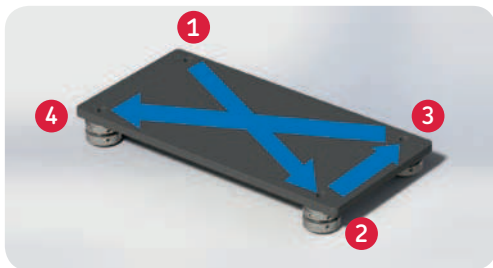
11. Check maximum height



12. Release vertical adjustment bolts



13. OEM bolt tightening sequence



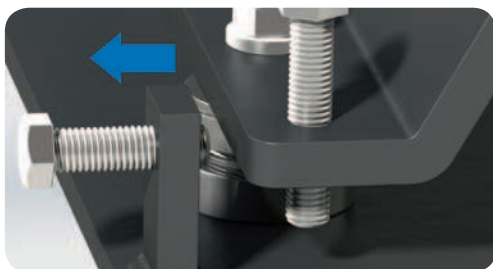
Bolt tightening advice:

- A. 25% of tightening torque
- B. 50% of tightening torque
- C. 100% of tightening torque



Check with OEM

14. Release horizontal adjustment bolts



15. Check the final alignment



Bolt tightening advice:

Re-check after 24 hot running hours

16. Recommendations

Remove complete or lock, with a locking nut, the released adjustment bolts.

Related products



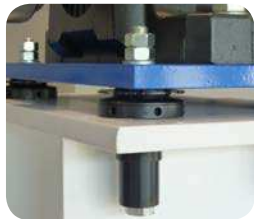
SKF Shaft Alignment Tools



SKF spherical washers



Surface treated SKF Vibracon chocks



SKF Vibracon low profile chock and spherical washer

Downloads/Contact details:



vibracon@skf.com

www.vibracon.com

® SKF is a registered trademark of the SKF Group.

© SKF Group 2016

The contents of this publication are the copyright of the publisher and may not be reproduced (even extracts) unless prior written permission is granted. Every care has been taken to ensure the accuracy of the information contained in this publication but no liability can be accepted for any loss or damage whether direct, indirect or consequential arising out of the use of the information contained herein.

PUB 43/P2 16115/1 EN · May 2016