

INSTALLATION INSTRUCTIONS

SSB-3131, SSM-3131, SLB-3131 and SLM-3131 Interface Brackets

SSB-3131, SSM-3131, SLB-3131 and SLM-3131 Interface Brackets are designed for use with Chief® Series Projector Mounts. See the specific installation instructions provided with the mount for additional installation information.

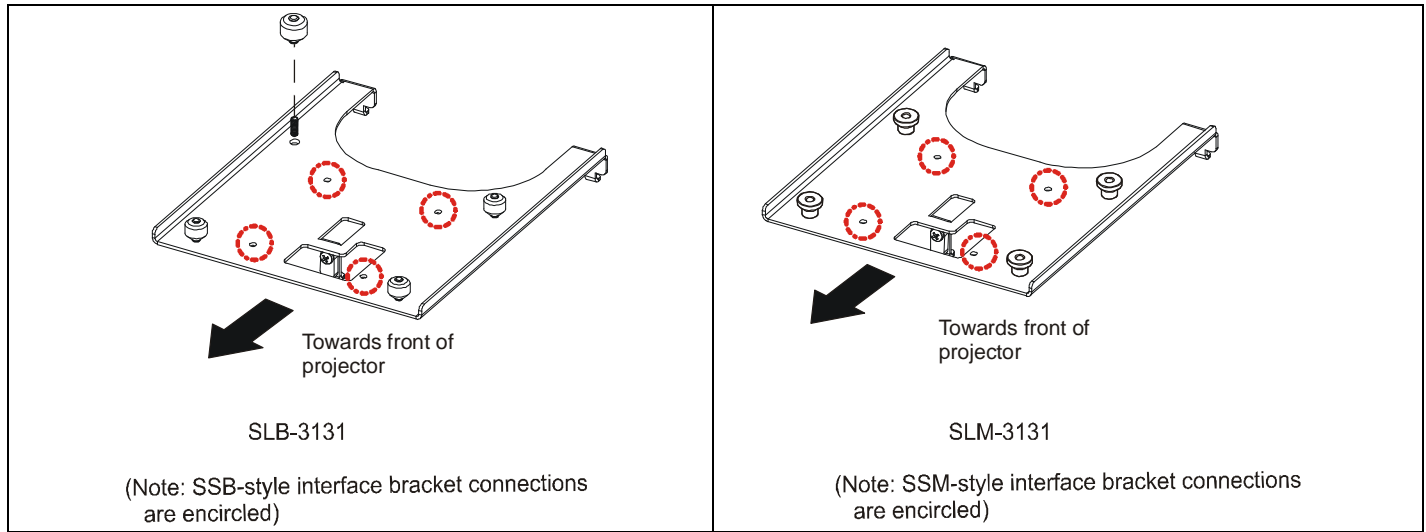
Unpack carton and verify kit contents. If any listed parts are missing, immediately contact a Chief Customer Service representative.



WARNING: IMPROPER INSTALLATION CAN LEAD TO EQUIPMENT FALLING CAUSING SERIOUS PERSONAL INJURY AND DAMAGE TO EQUIPMENT! DO NOT substitute hardware. Use only hardware supplied by manufacturer!

- (1) Interface Bracket
- (4) 10 - 24 Thumb Nuts**
- (1) All-Points Security Kit

- (1) Locking Tab
- (1) # 8 - 32 x 1/2" Phillips Pan Screw



**Only used when installing SLB/SSB interface brackets.

NOTE: Specific to SSB-style and SSM-style interface bracket installation, all appropriate screws come pre-installed as reflected in the encircled locations above. DO NOT attempt to substitute and USE ONLY this pre-installed hardware for SSB-style and SSM-style interface bracket installation.

Installation Instructions



WARNING: OVER TIGHTENING OF SCREWS CAN DAMAGE PARTS AND CAN LEAD TO SERIOUS PERSONAL INJURY AND DAMAGE TO EQUIPMENT! DO NOT over tighten screws when installing Interface bracket.

NOTE: Step 1 is only required when installing an SLB/SSB interface bracket. If an SLM/SSM bracket is being installed, proceed to step 2.

1. Screw thumb screws onto 10-24 x 5/8" Phillips pan head screws. DO NOT fully tighten thumb screws at this time.
2. Turn projector upside down.
3. Locate the two-rear rubber pads as seen in Figure 1. Cut the small tab on each rear pad so they can push down into the mounting slots.



Figure 1:

Touchboards

205 Westwood Ave, Long Branch, NJ 07740
Phone: 866-94 BOARDS (26273) / (732)-222-1511
Fax: (732)-222-7088 | E-mail: sales@touchboards.com



Milestone AV Technologies, and its affiliated corporations and subsidiaries (collectively, "Milestone"), intend to make this manual accurate and complete. However, Milestone makes no claim that the information contained herein covers all details, conditions or variations, nor does it provide for every possible contingency in connection with the installation or use of this product. The information contained in this document is subject to change without notice or obligation of any kind. Milestone makes no representation of warranty, expressed or implied, regarding the information contained herein. Milestone assumes no responsibility for accuracy, completeness or sufficiency of the information contained in this document.

INSTALLATION INSTRUCTIONS

4. Locate the front adjustable foot as seen in Figure 2. Cut the two small tabs on the front center mounting slot so it can push down into the mounting slot.

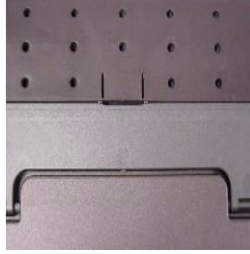


Figure 2:

5. Align the interface bracket's two rear and one front tabs with the two rear and one front mounting slots in the projector. Insert the bracket tabs down into the mounting slot and slide the bracket back toward the rear of the projector as seen in Figure 3.



Figure 3:

6. Locate the pre-packaged interface bracket locking tab. Place the locking tab through the front opening in the mounting bracket and lay it on its side as seen in Figure 4.

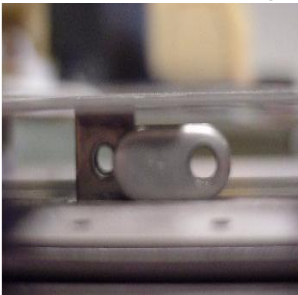


Figure 4:

7. Using a screwdriver, slide the locking tab to the left and push the end of the locking tab into the mounting slot in front of the front mounting tab on the bracket as seen in Figure 5.

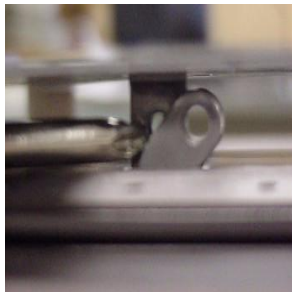


Figure 5:



Milestone AV Technologies, and its affiliated corporations and subsidiaries (collectively, "Milestone"), intend to make this manual accurate and complete. However, Milestone makes no claim that the information contained herein covers all details, conditions or variations, nor does it provide for every possible contingency in connection with the installation or use of this product. The information contained in this document is subject to change without notice or obligation of any kind. Milestone makes no representation of warranty, expressed or implied, regarding the information contained herein. Milestone assumes no responsibility for accuracy, completeness or sufficiency of the information contained in this document.

INSTALLATION INSTRUCTIONS

- Using a screwdriver, align the hole in the locking tab with the threaded hole on the interface bracket in the front mounting tab as seen in Figure 6.

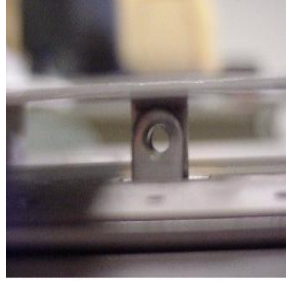


Figure 6:

- Locate the pre-packaged #8 - 32 x 3/8" locking tab screw. Place the # 8 screw through the hole in the locking tab and secure interface bracket to projector as seen in Figure 7. Tighten all fasteners at this time.



Figure 7:

NOTE: Security screws can be substituted when mounting interface bracket to projector by using the parts and installation instructions in the All-Points Security Kit.

Chief® is a registered trademark of Milestone AV Technologies. All rights reserved.



Milestone AV Technologies, and its affiliated corporations and subsidiaries (collectively, "Milestone"), intend to make this manual accurate and complete. However, Milestone makes no claim that the information contained herein covers all details, conditions or variations, nor does it provide for every possible contingency in connection with the installation or use of this product. The information contained in this document is subject to change without notice or obligation of any kind. Milestone makes no representation of warranty, expressed or implied, regarding the information contained herein. Milestone assumes no responsibility for accuracy, completeness or sufficiency of the information contained in this document.