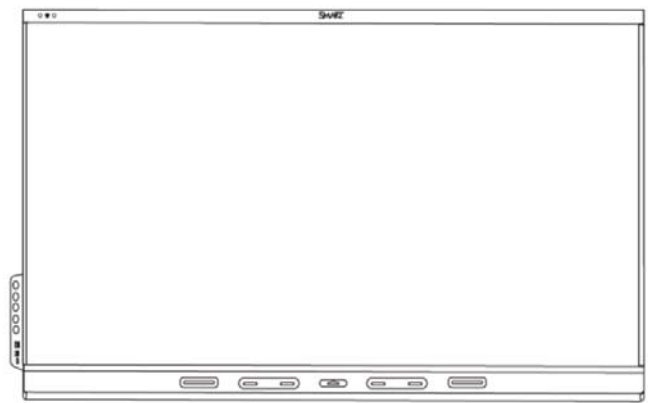


# SMART<sup>®</sup>



## ***Service Parts Diagrams***

**For Model:  
SBID-6275S-PW**

# Service Parts Diagrams Revision History

## Revision 1 - April, 2020

- New document

## Standard Warranty Terms

Base product: Three-year limited equipment warranty

First Customer Ship: March, 2020

---

**SMART Technologies**

3636 – Research Road NW

Calgary, AB T2L 1Y1

CANADA

Support +1.403.228.5940 or Toll Free 1.866.518.6791 (Canada/U.S.)

Support Fax +1.403.806.1256

[www.smarttech.com/contactserviceparts](http://www.smarttech.com/contactserviceparts) [www.smarttech.com](http://www.smarttech.com)



# Service Parts Diagrams for the SBID-6275S-PW

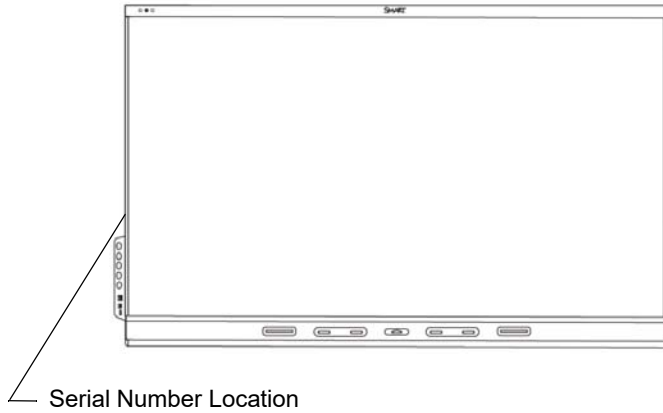
---

Identifying Your Product Using the Serial Number ..... 1  
Ordering Parts ..... 1  
SBID-6275S-PW Parts ..... 2



## Identifying Your Product Using the Serial Number

To make sure that you have the correct service parts diagrams, you must verify the serial number of your SBID-6275S-PW. The serial number of the flat panel display will be located on the left side. An example of the serial number format is shown below.



Unique Serial Number

**K072MW03A0232**

## Ordering Parts

### Customers

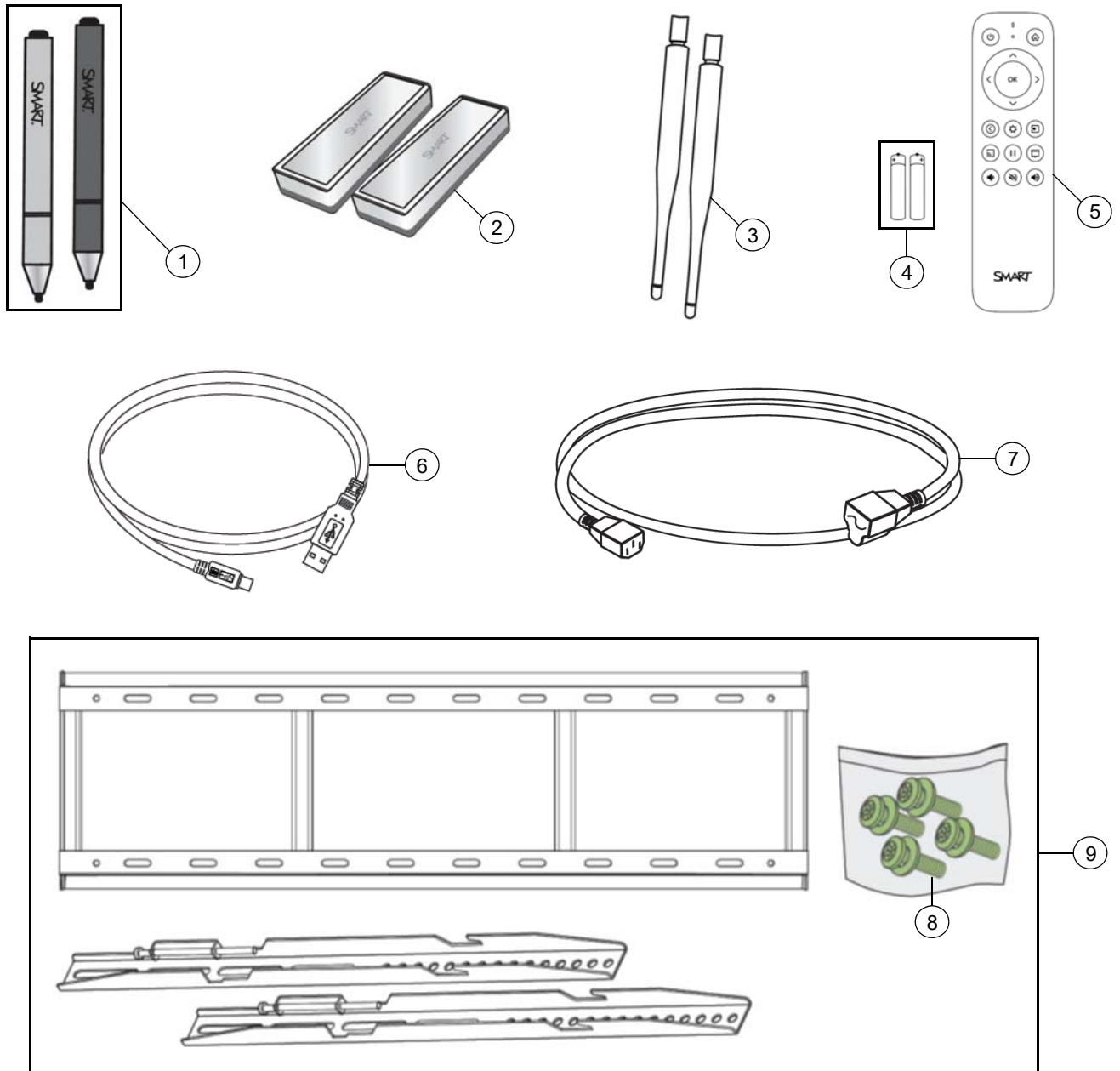
To order any of the parts in these service parts diagrams, contact your local reseller. To find a reseller near you, visit [www.smarttech.com/where](http://www.smarttech.com/where).

### Dealers and Distributors

For specific technical and pricing enquiries in regards to these diagrams please contact our service parts department. Pricing is also available on-line via the SOURCE website ([source.smarttech.com](http://source.smarttech.com)).

Web Form: [www.smarttech.com/contactserviceparts](http://www.smarttech.com/contactserviceparts)  
Phone: 1.888.42.SMART  
International: +1.403.245.0333

# SBID-6275S-PW Parts



Item	Part No.	Qty	Description
1	1033824	1	Assembly, pen, 2-pack (black, red), SBID-6000S
2	1032737	2	Assembly, bar eraser, SBID-6000S
3	1032517	2	Antenna
4	1034118	1	Assembly, batteries, AAA, two pack
5	1033964	1	Assembly, remote control
6	1028289	1	Cable, USB, A-B, 16' (5.0 m)
7	1022063	1	Cable, power, North America, 8' (2.4 m)

7	93-055	1	Cable, power, United Kingdom, 8' (2.4 m)
7	93-056	1	Cable, power, Australia, 8' (2.4 m)
7	93-054	1	Cable, power, Europe, 8' (2.4 m)
7	93-00708-20	1	Cable, power, China, 8' (2.4 m)
7	93-00654-20	1	Cable, power, Japan, 8' (2.4 m)
7	93-063	1	Cable, power, South Africa, 8' (2.4 m)
7	1018969	1	Cable, power, Singapore, 14' 9" (4.5 m)
7	1018970	1	Cable, power, India, 14' 9" (4.5 m)
7	1018971	1	Cable, power, Saudi Arabia, 14' 9" (4.5 m)
7	1018972	1	Cable, power, Brazil, 14' 9" (4.5 m)
7	1025597	1	Cable, power, Argentina, 14' 9" (4.5 m)
7	1025603	1	Cable, power, Chile and Italy, 14' 9" (4.5 m)
7	1030859	1	Cable, power, Korea, 8' (2.4 m)
8	1032611	4	Screw, M8 × 24 mm, Phillips, pan head, SEMS split washer <b>NOTE:</b> For attaching wall mount to flat panel display.
9	WM-SBID-200	1	SMART Wall Mount for MX-V2, 7000, 6000 and 2000 series <b>NOTE:</b> Includes wall mount and 4 pcs of 1032611.
Not shown	1033728	1	Kit, packaging, SBID-6275S-PW