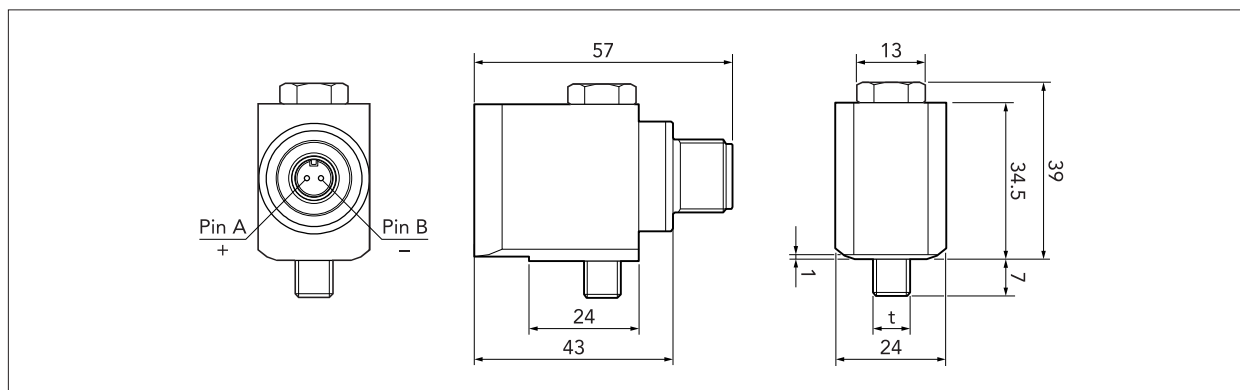


Vibration transducer, SLD144S



The vibration transducer SLD144S is a piezo-electric accelerometer of compression type with side entry and built-in electronics, designed for vibration monitoring of industrial machinery. The electrical signal is isolated from the transducer housing.

The transducer is installed on a flat machine surface and connected via a twisted pair cable with a 2-pin connector. The flat machine surface must be min. 30 mm in diameter (min. 16 mm in diameter when using mounting base 15757, 15802, or 17769). The transducer has a captured bolt for installation. For vibration transducers with top entry, see TD-635.

Technical specifications

Nominal sensitivity,	
main axis:	10 mV/m/s ² * =100 mV/g
Transverse sensitivity:	max. 10%
Base strain sensitivity:	0.01 m/s ² /μ strain typical
Linear frequency range:	2 Hz to 10 kHz (± 1 dB)
Max. peak acceleration:	600 m/s ² = 60 g
Settling time:	3 sec
Bias point:	10 to 13 V (typical 12V)
Temperature range:	-40° to +125 °C (-40° to 257 °F)
Power requirements:	24 V, 2 to 5 mA
Isolation:	case isolated, > 10 Mohm
Casing:	stainless acid-proof steel Sandvik 1802, EN:1.4523
Sealing:	IP66/67
Thread (t):	M6x1.0, M8x1.25 or UNF 1/4"-28
Torque limit:	10 Nm (7.4 lbf·ft)
Weight:	200 grams (7 oz)
Connection:	2-pin connector, MIL-C-5015 style
Cable length:	max. 100 m (328 ft)
Cable capacitance:	210 pF/m

* Individual value given on the calibration chart.

ARTICLE NO:

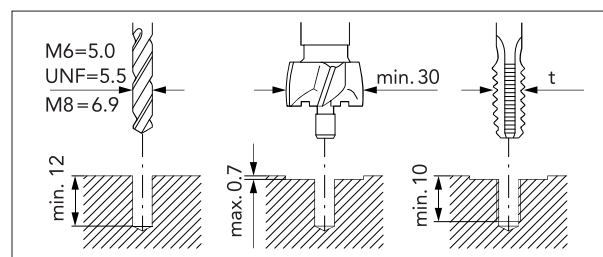
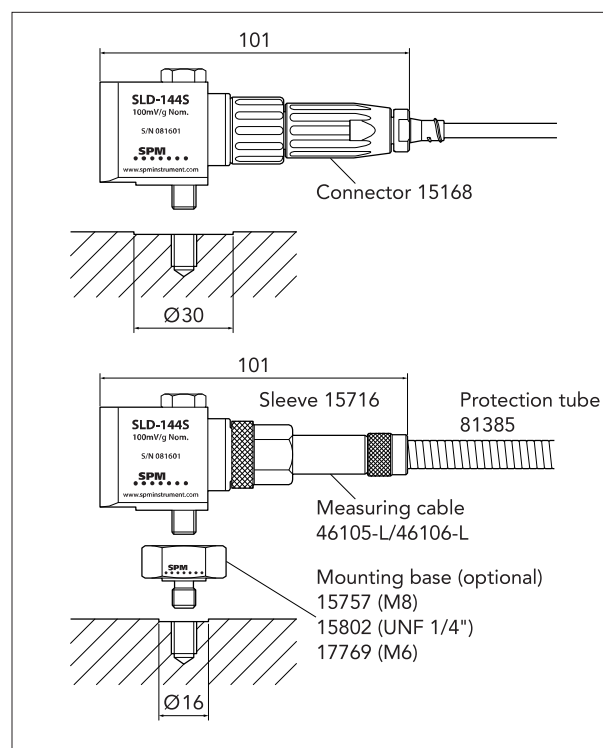
SLD144S	-	XXX
A		B

A. Part number SLD144S
B. Thread (t) M6, M8, or UNF

SERIAL NO:

X	X	X	X	X	X
Year	Week	Number			

Installation examples



Installation tools

- 81393 Holder for counterbore
- 81394 Pilot for M6 and UNF 1/4"-28
- 81395 Pilot for M8
- 81396 Counterbore, diameter 30 mm

