

User manual

TC191W TC241W

The color and the appearance may differ depending on the product, and the specifications are subject to change without prior notice to improve the performance.

Table Of Contents

BEFORE USING THE PRODUCT	7	Copyright
	8	Icons used in this manual
	8	Symbols for safety precautions
	9	Cleaning
	9	Cleaning
	10	Securing the Installation Space
	10	Precautions for storage
	11	Safety Precautions
	11	Electricity and Safety
	12	Installation and Safety
	14	Operation and Safety
	18	Correct posture to use the product
PREPARATIONS	19	Checking the Contents
	19	Removing the Packaging
	20	Checking the Components
	22	Parts
	22	Frontal Buttons
	24	Rear View
	25	Side View
	26	Installation
	26	Attaching the Stand
	27	Adjusting the Product Tilt and Height
	27	Rotating the Monitor
	28	Installing a Wall-mount Kit or Desktop Stand
	30	Anti-theft Lock
USING "WINDOWS EMBEDDED STANDARD 7"	31	What is "Windows Embedded Standard 7" Client?
	33	Connection to Use "Windows Embedded Standard 7"
	33	LAN Connection
	33	Connecting USB Devices

Table Of Contents

	34	Using "Windows Embedded Standard 7"
	34	Logon
	34	"Windows Embedded Standard 7" Desktop
	35	Programs
	42	Configuring Utilities
	43	Recover the System
CONNECTING AND USING A SOURCE DEVICE	45	Before Connecting
	45	Pre-connection Checkpoints
	46	Connecting and Using a PC
	46	Connecting to a PC
	47	Driver Installation
	48	Setting Optimum Resolution
	49	Changing the Resolution Using a PC
	52	Connecting to a Video Device
	52	Connecting to a Dual Monitor
	52	Connecting a SERIAL cable
	53	Connecting a Microphone
	53	Connecting to Headphones
	53	Connecting the Power
SCREEN SETUP	54	Brightness
	54	Configuring Brightness
	55	Contrast
	55	Configuring Contrast
	56	Sharpness
	56	Configuring Sharpness
	57	SAMSUNG MAGIC Bright
	57	Configuring SAMSUNG MAGIC Bright
	58	SAMSUNG MAGIC Angle
	58	Configuring SAMSUNG MAGIC Angle
	59	Coarse
	59	Adjusting Coarse

Table Of Contents

	60	Fine
	60	Adjusting Fine
CONFIGURING TINT	61	SAMSUNG MAGIC Color
	61	Configuring SAMSUNG MAGIC Color
	62	Red
	62	Configuring Red
	63	Green
	63	Configuring Green
	64	Blue
	64	Configuring Blue
	65	Color Tone
	65	Configuring the Color Tone Settings
	66	Gamma
	66	Configuring Gamma
RESIZING OR RELOCATING THE SCREEN	67	H-Position & V-Position
	67	Configuring H-Position & V-Position
	68	Image Size (TC241W model only)
	68	Changing the Image Size
	69	Menu H-Position & Menu V-Position
	69	Configuring Menu H-Position & Menu V-Position
SETUP AND RESET	70	Reset
	70	Initializing Settings (Reset)
	71	Language
	71	Changing the Language
	72	Eco Saving
	72	Configuring Eco Saving

Table Of Contents

	73	Clock
	73	Configuring Clock
	74	Off Timer
	74	Configuring Off Timer
	75	On Timer
	75	Configuring On Timer
	76	On Timer Source
	76	Configuring On Timer Source
	77	On Timer Volume
	77	Configuring On Timer Volume
	78	Customized Key
	78	Configuring Customized Key
	79	Display Time
	79	Configuring Display Time
	80	Menu Transparency
	80	Changing Menu Transparency
INFORMATION MENU AND OTHERS	81	INFORMATION
	81	Displaying INFORMATION
	81	Configuring Volume in the Initial Screen
INSTALLING THE SOFTWARE	82	Natural Color
	82	What is Natural Color ?
	83	MultiScreen
	83	Installing the Software
	84	Removing the Software

Table Of Contents

	85	MagicRMS Pro
	85	About MagicRMS Pro
	85	Components
	86	MagicRMS Pro Server
	86	MagicRMS Pro Database
	86	MagicRMS Pro Console
	86	PXE
	86	MagicRMS Pro Agent
TROUBLESHOOTING GUIDE	87	Requirements Before Contacting Samsung Customer Service Center
	87	Testing the Product
	87	Checking the Resolution and Frequency
	87	Check the following.
	90	Q & A
SPECIFICATIONS	92	General
	94	PowerSaver
	95	Standard Signal Mode Table
APPENDIX	98	Contact SAMSUNG WORLD WIDE
	104	Responsibility for the Pay Service (Cost to Customers)
	104	Not a product defect
	104	A Product damage caused by customer's fault
	104	Others
	105	Correct Disposal of This Product (Waste Electrical & Electronic Equipment)
	105	Correct disposal of batteries in this product
	106	Terminology
INDEX		

Copyright

The contents of this manual are subject to change without notice to improve quality.

© 2012 Samsung Electronics

Samsung Electronics owns the copyright for this manual.

Use or reproduction of this manual in parts or entirety without the authorization of Samsung Electronics is prohibited.


Microsoft, Windows and Windows NT are registered trademarks of Microsoft Corporation.

VESA, DPM and DDC are registered trademarks of the Video Electronics Standards Association.





- An administration fee may be charged if either
 - (a) an engineer is called out at your request and there is no defect in the product (i.e, where you have failed to read this user manual).
 - (b) you bring the unit to a repair center and there is no defect in the product (i.e, where you have failed to read this user manual).
- The amount of such administration charge will be advised to you before any work or home visit is carried out.

Before Using the Product

Icons used in this manual

	The following images are for reference only. Real-life situations may differ from what is shown in the images.
---	--

Symbols for safety precautions

 Warning	A serious or fatal injury may result if instructions are not followed.
 Caution	Personal injury or damage to properties may result if instructions are not followed.
	Activities marked by this symbol are prohibited.
	Instructions marked by this symbol must be followed.

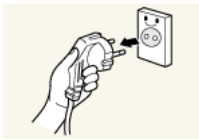
Before Using the Product

Cleaning

Cleaning

Exercise care when cleaning as the panel and exterior of advanced LCDs are easily scratched.

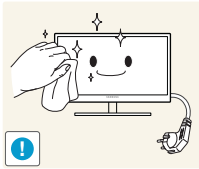
Take the following steps when cleaning.



1. Power off the monitor and computer.
2. Disconnect the power cable from the monitor.



Hold the power cable by the plug and do not touch the cable with wet hands. Otherwise, an electric shock may result.



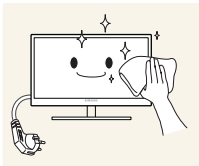
3. Wipe the monitor screen using a clean, soft and dry cloth.



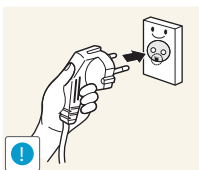
- Do not apply a cleaning agent that contains alcohol, solvent, or surfactant to the monitor.



- Do not spray water or detergent directly on the product.



4. Wet a soft and dry cloth in water and wring thoroughly to clean the exterior of the monitor.



5. Connect the power cable to the product after cleaning the product.
6. Power on the monitor and computer.

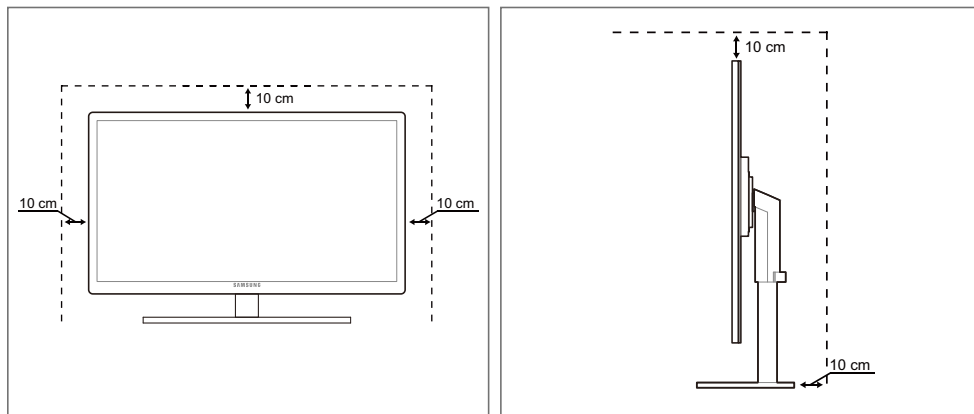
Before Using the Product

Securing the Installation Space

- Ensure some space around the product for ventilation. An internal temperature rise may cause fire and damage the product. Be sure to allow the amount of space as shown below or greater when installing the product.



The exterior may differ depending on the product.



Precautions for storage



Be sure to contact Samsung Customer Service Center (page98) if the inside of the monitor needs cleaning. (Service fee will be charged.)

Before Using the Product

Safety Precautions

Electricity and Safety



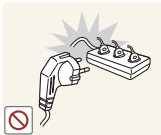
The following images are for reference only. Real-life situations may differ from what is shown in the images.

Warning



Do not use a damaged power cable or plug, or a loose power socket.

- An electric shock or fire may result.



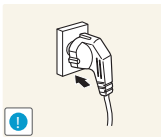
Do not plug many products into the same power socket.

- Otherwise, the socket may overheat and cause a fire.



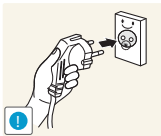
Do not touch the power cable with wet hands.

- Otherwise, an electric shock may result.



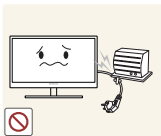
Insert the power cable all the way in so it is not loose.

- An unstable connection may cause a fire.



Ensure you connect the power cable to a grounded power socket. (type 1 insulated devices only).

- An electric shock or injury may result.



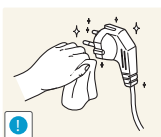
Do not bend or pull the power cable with force. Do not weigh the power cable down with a heavy object.

- A damaged power cord may cause an electric shock or fire.



Do not place the power cable or product near heat sources.

- An electric shock or fire may result.



If the power cable pins or power outlet is covered with a foreign substance (dust, etc.), wipe it off using a dry cloth.

- Otherwise, a fire may result.

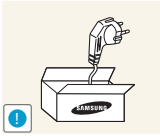
Before Using the Product

Caution



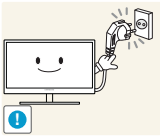
Do not unplug the power cable when the product is in use.

- The product may become damaged by an electric shock.



Do not use the power cable for products other than authorized products supplied by Samsung.

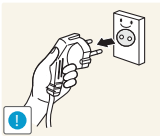
- An electric shock or fire may result.



Keep the power socket where the power cable is connected unobstructed.

- If any problem occurs in the product, unplug the power cable to completely cut the power to the product.

Power to the product cannot be completely cut off with the power switch.



Hold the plug when disconnecting the power cable from the power socket.

- An electric shock or fire may result.

Installation and Safety

Warning



DO NOT PLACE CANDLES, INSECT REPELLANTS OR CIGARETTES ON TOP OF THE PRODUCT. DO NOT INSTALL THE PRODUCT NEAR HEAT SOURCES.

- Otherwise, a fire may result.



Avoid installing the product in a narrow space with bad ventilation, such as a bookshelf or wall closet.

- Otherwise, a fire may result due to an increased internal temperature.



Keep the plastic packaging bag for the product in a place that cannot be reached by children.

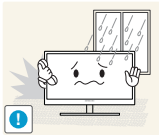
- Children may suffocate.

Before Using the Product



Do not install the product on an unstable or vibrating surface (insecure shelf, sloped surface, etc.).

- The product may fall and break or cause a personal injury.
- Using the product in an area with excess vibration may damage the product or cause a fire.



Do not install the product in a vehicle or a place exposed to dust, moisture (water drips, etc.), oil, or smoke.

- An electric shock or fire may result.



Do not expose the product to direct sunlight, heat, or a hot object such as a stove.

- Otherwise, the product lifespan may be reduced, or a fire may result.



Do not install the product within the reach of young children.

- The product may fall and injure children.

Caution



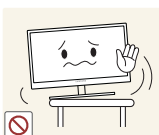
Take care not to drop the product when moving it.

- Otherwise, product failure or personal injury may result.



Do not set down the product on its front.

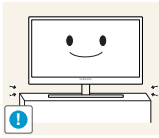
- The screen may become damaged.



When installing the product on a cabinet or shelf, make sure that the bottom edge of the front of the product is not protruding.

- The product may fall and break or cause a personal injury.
- Install the product only on cabinets or shelves of the right size.

Before Using the Product



Put down the product carefully.

- The product may fall and break or cause a personal injury.



Installing the product in an unusual place (a place exposed to a lot of fine particles, chemical substances or extreme temperatures, or an airport or train station where the product should operate continuously for an extended period of time) may seriously affect its performance.

- Be sure to consult Samsung Customer Service Center (page98) before installation if you want to install the product at such a place.

Operation and Safety

Warning



High voltage runs through the product. Do not attempt to disassemble, repair, or modify the product on your own.

- An electric shock or fire may result.
- Contact Samsung Customer Service Center (page98) for repair.



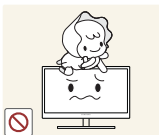
Before moving the product, turn off the power switch and disconnect the power cable and all other connected cables.

- Otherwise, the power cord may be damaged and a fire or electric shock may result.



If the product generates a strange noise, a burning smell, or smoke, remove the power cable immediately and contact Samsung Customer Service Center (page98).

- An electric shock or fire may result.



Do not let children hang from the product or climb on top of it.

- The product may fall, and your child may become injured or seriously harmed.



If the product falls or the exterior is damaged, power off the product, remove the power cable, and contact Samsung Customer Service Center (page98).

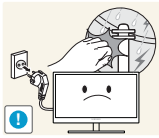
- Otherwise, an electric shock or fire may result.



Do not put a heavy object, toy, or sweets on top of the product.

- The product or heavy objects may fall as children try to reach for the toy or sweets resulting in a serious injury.

Before Using the Product



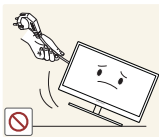
During a lightning or thunderstorm, power off the product and remove the power cable.

- An electric shock or fire may result.



Do not drop objects on the product or apply impact.

- An electric shock or fire may result.



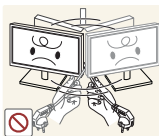
Do not move the product by pulling the power cable or any cable.

- Otherwise, the cable may be damaged and product failure, an electric shock or fire may result.



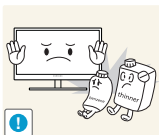
If a gas leakage is found, do not touch the product or power cable. Also, ventilate the area immediately.

- Sparks can cause an explosion or fire.
- During a lightning or thunderstorm, do not touch the power cable or antenna cable.



Do not lift or move the product by pulling the power cable or any cable.

- Otherwise, the cable may be damaged and product failure, an electric shock or fire may result.



Do not use or keep combustible spray or an inflammable substance near the product.

- An explosion or fire may result.



Ensure the vents are not blocked by tablecloths or curtains.

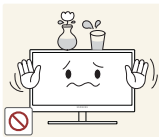
- Otherwise, a fire may result from an increased internal temperature.

Before Using the Product



Do not insert a metallic object (a chopstick, coin, hair pin, etc.) or inflammable object (paper, match, etc.) into the vent or ports of the product.

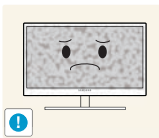
- If water or any foreign substance enters the product, be sure to power off the product, remove the power cable, and contact Samsung Customer Service Center (page98).
- Product failure, an electric shock or fire may result.



Do not place objects containing liquid (vases, pots, bottles, etc) or metallic objects on top of the product.

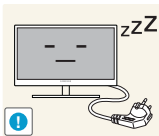
- If water or any foreign substance enters the product, be sure to power off the product, remove the power cable, and contact Samsung Customer Service Center (page98).
- Product failure, an electric shock or fire may result.

Caution



Leaving the screen fixed on a stationary image for an extended period of time may cause afterimage burn-in or defective pixels.

- If you are not going to use the product for an extended period of time, activate power-saving mode or a moving-picture screen saver.



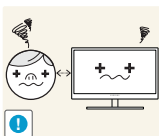
Disconnect the power cable from the power socket if you do not plan on using the product for an extended period of time (vacation, etc.).

- Otherwise, a fire may result from accumulated dust, overheating, an electric shock, or electric leakage.



Use the product at the recommended resolution and frequency.

- Your eyesight may deteriorate.



Looking at the screen too close for an extended period of time can deteriorate your eyesight.



Do not hold the monitor upside-down or move it by holding the stand.

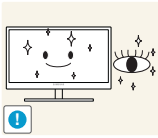
- The product may fall and break or cause a personal injury.



Do not use humidifiers or stoves around the product.

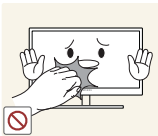
- An electric shock or fire may result.

Before Using the Product

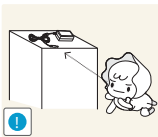


Rest your eyes for more than 5 minutes for every 1 hour of product use.

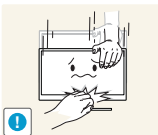
- Eye fatigue will be relieved.



Do not touch the screen when the product has been turned on for an extended period of time as it will become hot.

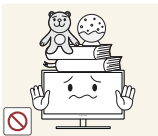


Store the small accessories used with the product out of reach of children.



Exercise caution when adjusting the product angle or stand height.

- Otherwise, children's fingers or hands may become stuck and injured.
- Tilting the product excessively may cause it to fall and result in personal injury.



Do not place heavy objects on the product.

- Product failure or personal injury may result.



When using headphones or earphones, do not turn the volume too high.

- Having the sound too loud may damage your hearing.

Correct posture to use the product



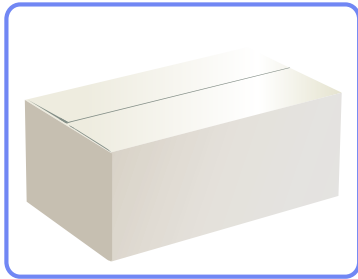
Use the product in the correct posture as follows:

- Straighten your back.
- Allow a distance of 45 to 50cm between your eye and the screen, and look slightly downward at the screen.
Keep your eyes directly in front of the screen.
- Adjust the angle so light does not reflect on the screen.
- Keep your forearms perpendicular to your upper arms and level with the back of your hands.
- Keep your elbows at about a right angle.
- Adjust the height of the product so you can keep your knees bent at 90 degrees or more, your heels attached to the floor, and your arms lower than your heart.

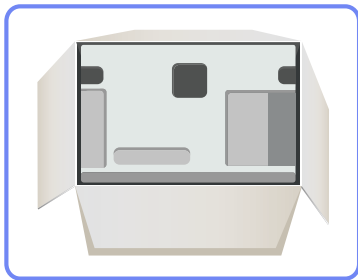
1.1 Checking the Contents

1.1.1 Removing the Packaging

- 1 Open the packaging box. Be careful not to damage the product when you open the packaging with a sharp instrument.



- 2 Remove the styrofoam from the product.



- 3 Check the components and remove the styrofoam and plastic bag.



- The appearance of actual components may differ from the image shown.
- This image is for reference only.



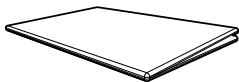
- 4 Store the box in a dry area so that it can be used when moving the product in the future.

1.1.2 Checking the Components



- Contact the dealer from whom you purchased the product if any item is missing.
- The appearance of the components and items sold separately may differ from the image shown.

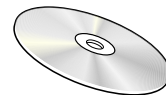
Components



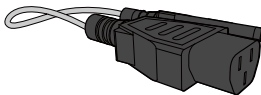
Quick setup guide



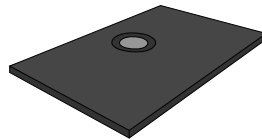
Warranty card
(Not available in some locations)



User manual



Power cable



Stand base

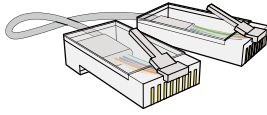


Components may vary depending on the country.

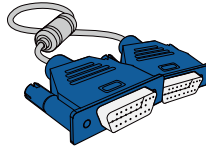
Items sold separately



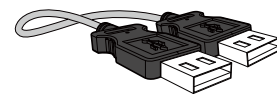
The following items can be purchased at your nearest retailer.



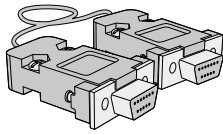
LAN cable



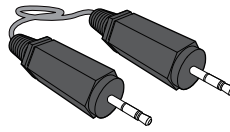
D-SUB cable



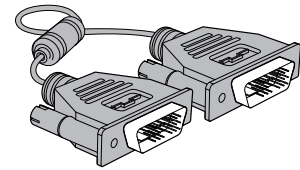
USB cable



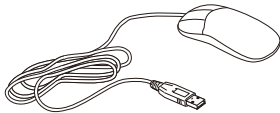
RS-232C cable



Stereo cable



DVI cable



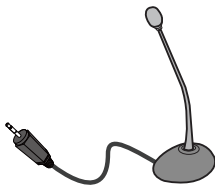
Mouse (USB)



Keyboard



Headphone



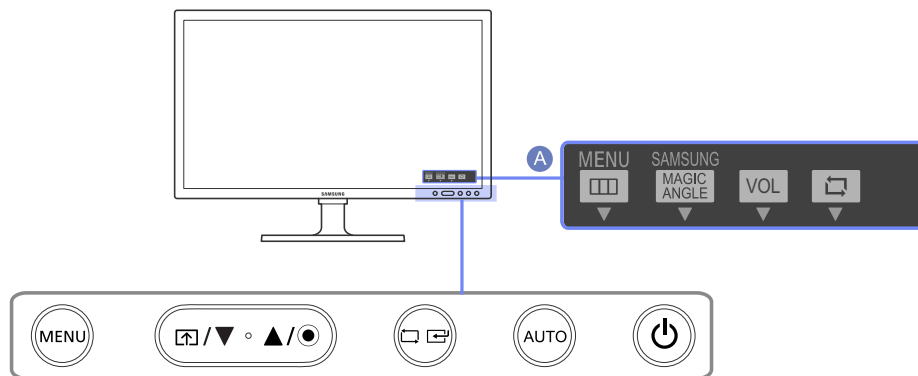
MIC

1.2 Parts



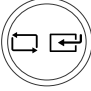
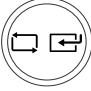
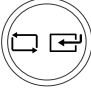





1.2.1 Frontal Buttons



The color and shape of parts may differ from what is shown. Specifications are subject to change without notice to improve quality.



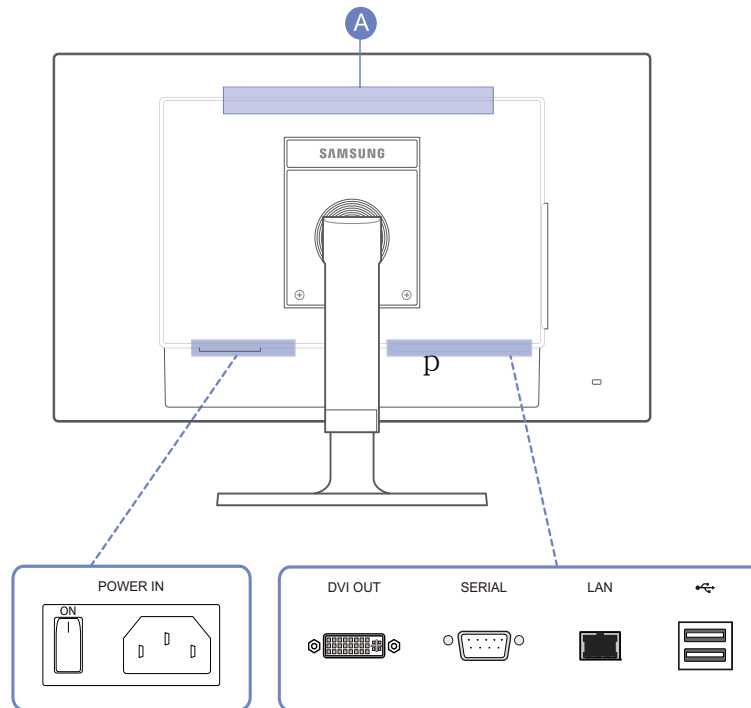
Icons	Description
	<p>Open or close the onscreen display (OSD) menu, or return to the parent menu.</p> <ul style="list-style-type: none"> Key Lock This function locks the buttons on the front of the product to prevent the current settings from being changed by others. Lock: Press and hold the [MENU] button for 5 seconds. The key lock mode will be enabled. Unlock: Press and hold the [MENU] button for 5 seconds when the key lock is enabled. The key lock mode will be disabled. <p> When the key lock mode is enabled, all the buttons on the front of the product are disabled.</p>
	<p>To configure Customized Key, go to SETUP&RESET → Customized Key and select the mode you want.</p> <p> For details, refer to "7.9 Customized Key".</p>
	<p>Move to the upper or lower menu or adjust the value for an option on the OSD menu.</p>

Icons	Description
	<p>Push the button to adjust the volume.</p> <p>When the OSD guide is displayed, the [] button activates the function assigned to Volume.</p>
	<p>Confirm a menu selection.</p> <p>Pressing the [] button when the OSD menu is not displayed will change the input source (Client/Analog). If you power on the product or change the input source by pressing the [] button, a message that shows the changed input source will appear at the top left corner of the screen.</p>
	<p>Press the [AUTO] button to automatically adjust the screen settings.</p>  <ul style="list-style-type: none"> • Available only in Analog mode. • Changing the resolution in Display Properties will activate the Auto Adjustment function.
	<p>Use this button for turning the Display on and off.</p> <p>Pressing the power button for more than 4 seconds forces the product to shut down.</p>  <ul style="list-style-type: none"> • The power indicator will be lit when the product is operating normally. • Refer to "11.2 PowerSaver" for details about the power-saving function. • To reduce power consumption, it is best to remove the power cable when you will not be using the product for an extended period of time.
 OSD Guide	<p>Press one of the buttons on the monitor, OSD Guide will appear on the screen. (This does not apply to the power button.)</p> <p>If you press a button on the front of the monitor, an OSD Guide will display showing the function of the button before the menu for the pressed button appears.</p> <p>To go to the menu, press the button on the front of the monitor again.</p> <p>OSD Guide may vary according to functions and models. Please refer to actual product.</p>

1.2.2 Rear View



The color and shape of parts may differ from what is shown. Specifications are subject to change without notice to improve quality.

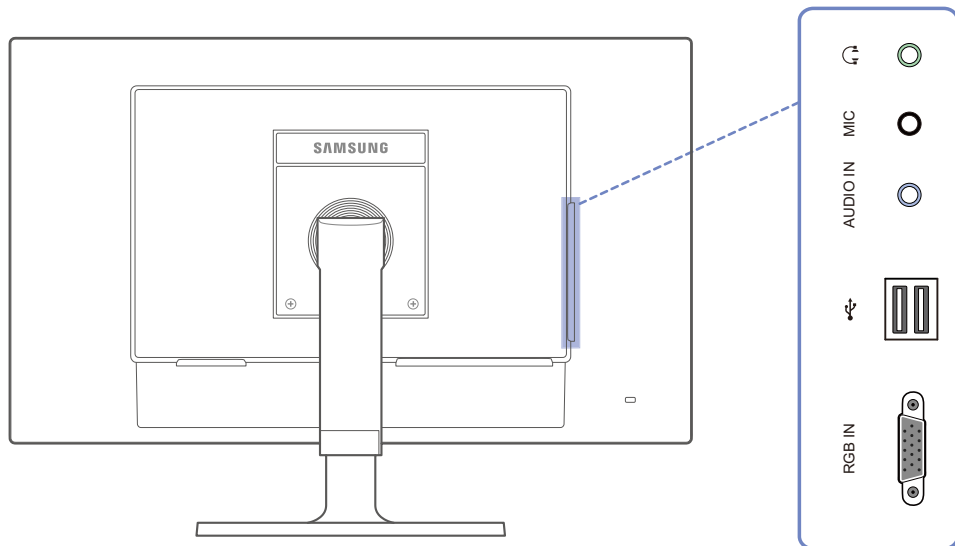





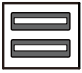
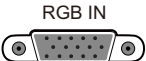
Port	Description
<p>POWER IN</p>	Connects to the power cable.
<p>DVI OUT</p>	Connects to a Monitor device using the DVI cable.
<p>SERIAL</p>	Connect to a device that supports an RS-232C connection (interface).
<p>LAN</p>	Connect to a network using the LAN cable.
	Connect to a USB device.
<p>A Speaker</p>	-

1.2.3 Side View



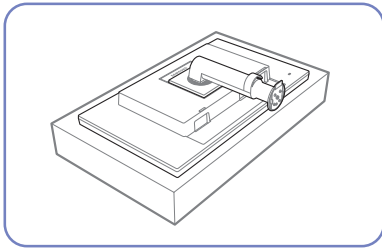
The color and shape of parts may differ from what is shown. Specifications are subject to change without notice to improve quality.



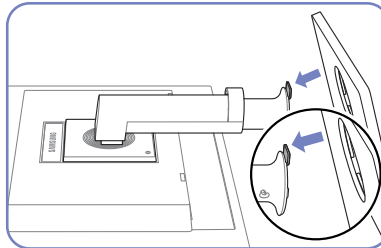
Pots	Description
	Connect to an audio output device such as headphones.
MIC 	Connect to a microphone.
AUDIO IN 	Receives sound from a PC via an audio cable.
	Connect to a USB device.
RGB IN 	Connects to a PC device using the D-SUB cable.

1.3 Installation

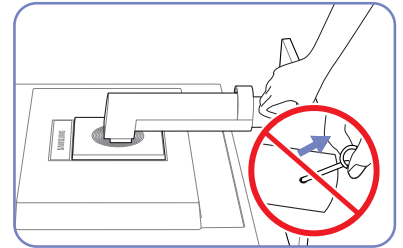
1.3.1 Attaching the Stand



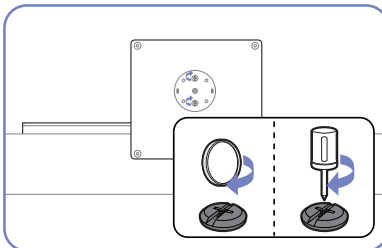
Place a protective cloth or cushion on a flat surface. Next, place the product with the face down on top of the cloth or cushion.



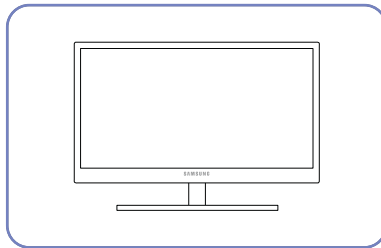
Insert the stand base into the stand in the direction of the arrow.



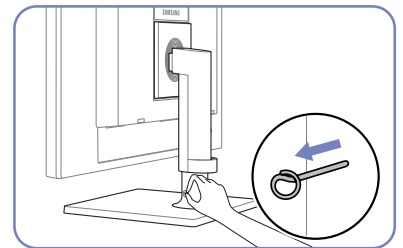
Do not remove the fixing pin until you are finished attaching the stand.



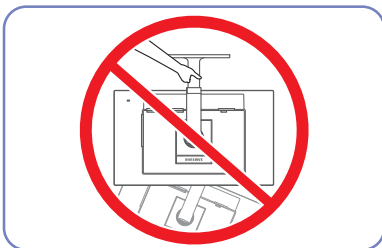
Fasten the screw tightly (using a screwdriver or coin) into the bottom of the stand base.



After installing the stand, place the product upright.



You can remove the fixing pin and adjust the stand now.



- Caution

Do not hold the product upside down only by the stand.

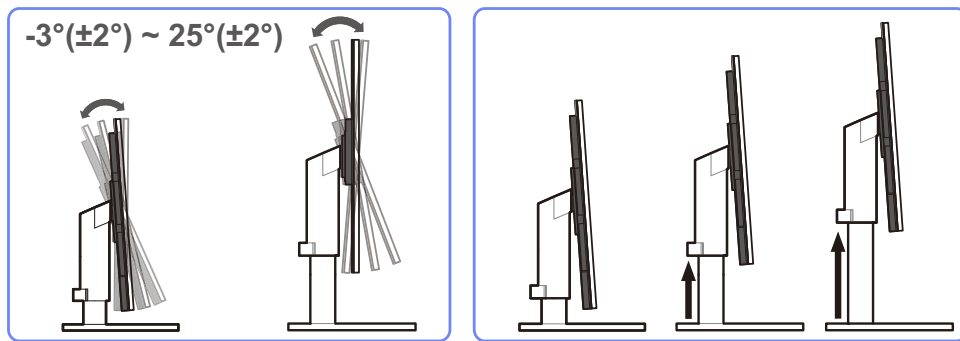


The color and shape of parts may differ from what is shown. Specifications are subject to change without notice to improve quality.

1.3.2 Adjusting the Product Tilt and Height



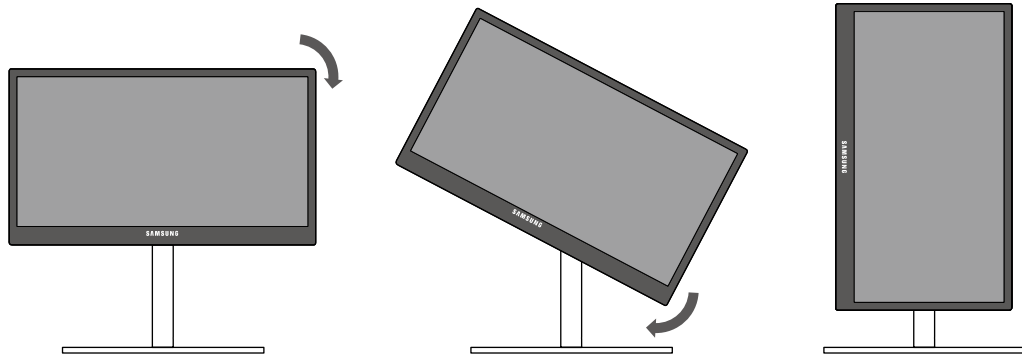
The color and shape of parts may differ from what is shown. Specifications are subject to change without notice to improve quality.



- To adjust the height, remove the fixing pin.
- The monitor tilt and height can be adjusted.
- Hold the top center of the product and adjust the height carefully.

1.3.3 Rotating the Monitor

You can rotate your monitor as shown below.



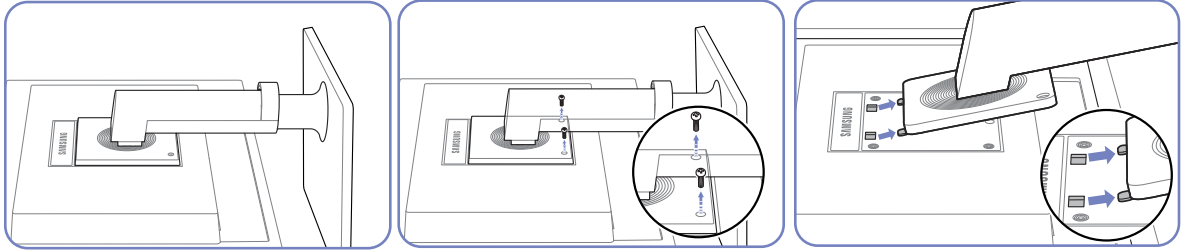
- Be sure to fully extend the stand before rotating the monitor.
- If you rotate the monitor without fully extending the stand, the corner of the monitor may hit the floor and get damaged.
- Do not rotate the monitor counterclockwise. The monitor may get damaged.

1.3.4 Installing a Wall-mount Kit or Desktop Stand

Before Installation



Power the product off and remove the power cable from the power socket.

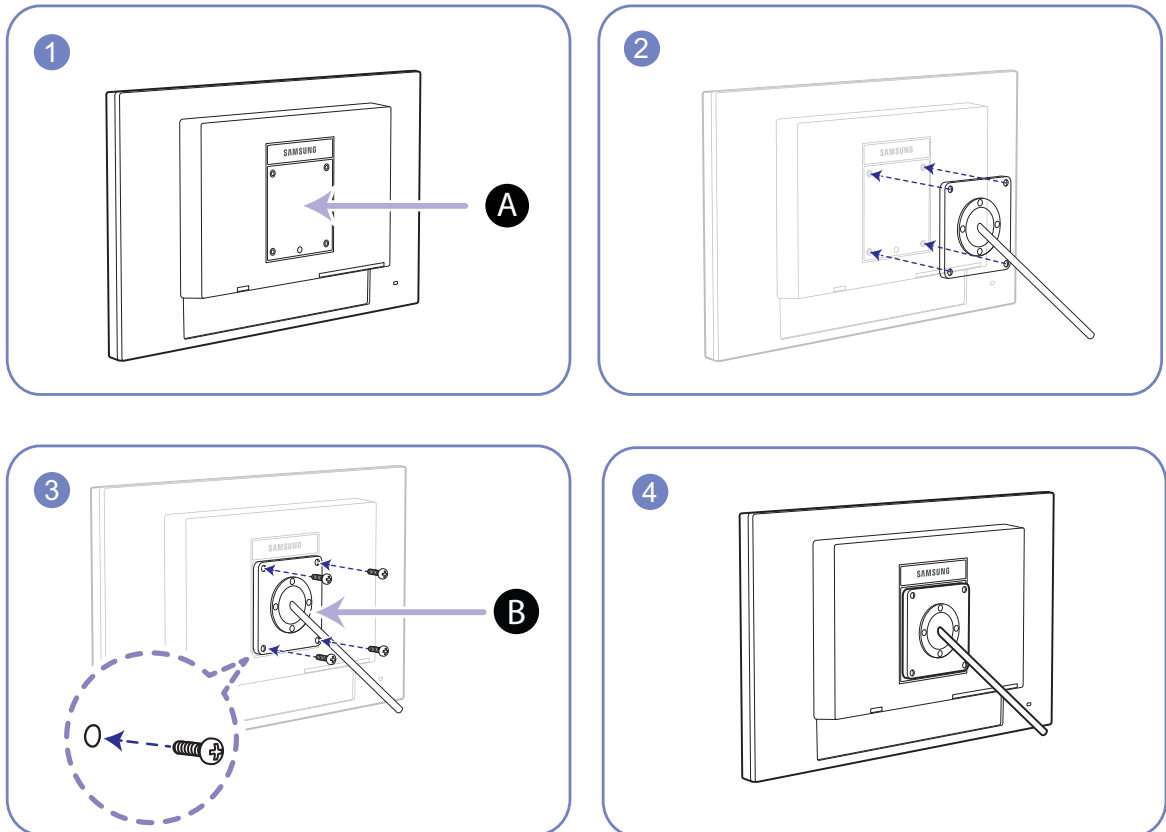


Place a protective cloth or cushion on a flat surface. Next, place the product with the face down on top of the cloth or cushion.

Unfasten the screw from the back of the product.

Lift and detach the stand.

Installing a Wall-mount Kit or Desktop Stand



A Attach the wall-mount kit or desktop stand here

B Bracket (sold separately)

Align the grooves and tightly fasten the screws on the bracket on the product with the corresponding parts on the wall-mount kit or desktop stand you want to attach.

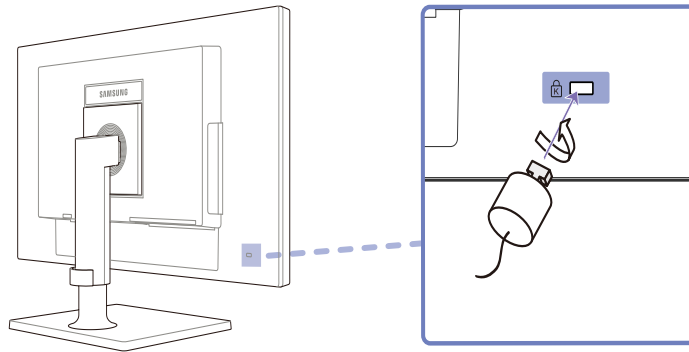


Notes

- Using a screw longer than the standard length can damage the internal components of the product.
- The length of screws required for a wall mount that does not comply with the VESA standards may vary depending on the specifications.
- Do not use screws that do not comply with the VESA standards. Do not attach the wall-mount kit or desktop stand using excessive force. The product may get damaged or fall and cause personal injury. Samsung shall not be held liable for any damage or injury caused by using improper screws or attaching the wall-mount kit or desktop stand using excessive force.
- Samsung shall not be held liable for any product damage or personal injury caused by using a wall-mount kit other than the one specified or from an attempt to install the wall-mount kit on your own.
- To mount the product on a wall, ensure you purchase a wall-mount kit that can be installed 10cm or farther away from the wall.
- Be sure to use a wall-mount kit that complies with the standards.

1.3.5 Anti-theft Lock

An anti-theft lock allows you to use the product securely even in public places. The locking device shape and locking method depend on the manufacturer. Refer to the user guide provided with your anti-theft locking device for details. The lock device is sold separately.



To lock an anti-theft locking device:

- 1 Fix the cable of your anti-theft locking device to a heavy object such as a desk.
- 2 Put one end of the cable through the loop on the other end.
- 3 Insert the locking device into the anti-theft lock slot at the back of the product.
- 4 Lock the locking device.



- An anti-theft locking device can be purchased separately.
- Refer to the user guide provided with your anti-theft locking device for details.
- Anti-theft locking devices can be purchased at electronics retailers or online.

2.1 What is "Windows Embedded Standard 7" Client?

The **Microsoft Windows Embedded Standard 7 (WES7)** client uses the **Microsoft Windows Embedded Standard 2011 OS**. When the WES client is connected to a server where **Citrix XenDesktop**, **VMWare View Client**, or **Microsoft Remote Desktop Connection** service is available, the keyboard, mouse, audio/video, and display data will be forwarded to the client through the network between the client and server.

Connectable Servers

- A **Citrix XenDesktop** Server
 - **Microsoft Windows 2000/2003/2008** Server where the **Terminal Service** and **Citrix XenServer** are installed
- A **VMWare View Client** Server
 - **Microsoft Windows 2000/2003/2008** Server where the **Terminal Service** and **VMWare Server** are installed
- A **Microsoft RDP (Remote Desktop Protocol)** Server
 - **Microsoft Windows 2000/2003/2008** Server where the **Terminal Services** are installed
 - **Microsoft Windows 7 Professional**



This manual describes the functions provided by the **WES** Client. However, it does not explain general functionalities of **WES**. For more general information on **Windows 7**, refer to Windows 7 Help provided by **Microsoft**.

- **Wake On LAN**

This feature allows you to power on the product by sending a pre-determined command from an external system to the product over a network.

Make sure the network is capable of data communication with the PC that sends the command to the product. Ensure you have a program that can generate **Wake on LAN** signals.



- Make sure a power supply is always connected to ensure the feature works when the product is turned off.
- The feature is intended to power on the product. (It does not support the function to power off the product.)

Configuring the settings

- 1 Press the power button on the product to turn on the power LED. Press **F2** to access the BIOS setup page.
- 2 Go to **AMD** → **Platform** and set **Wake on LAN option** to **Disable** or **Enable**.
(Default setting is **Disable**.)
- 3 Press **F10** to save the change (**Save**) and select **Yes** at the prompt to exit from the current session.

- **Wake on USB**

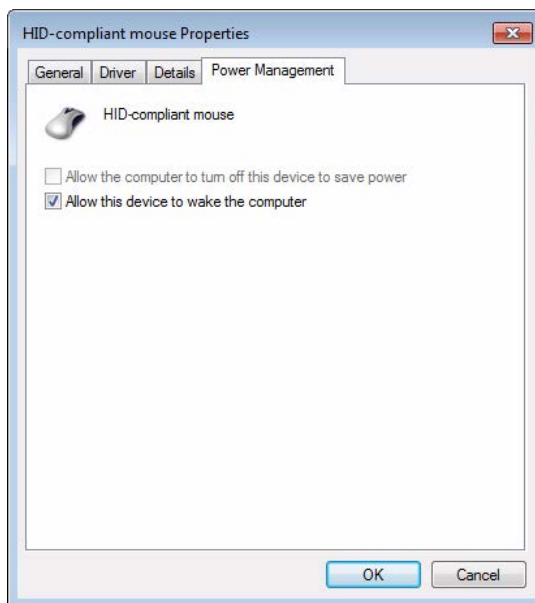
The feature switches the system to normal operation mode if the system is in standby mode after being left idle for a specified period of time. The mode will switch if a change to the keyboard or mouse input is detected.



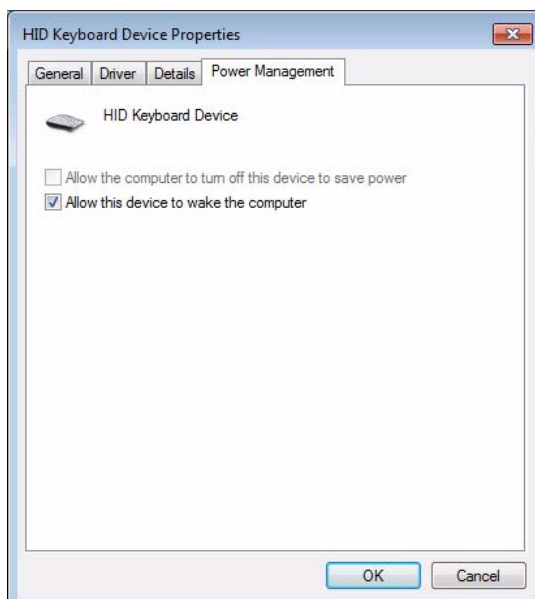
Changes include clicking a mouse button or pressing a key on the keyboard.

Configuring the settings

- 1 Select **Control Panel** → **System** → **Device Manager** → **Mouse** → **Power Management** → **Allow this device to wake the computer**.

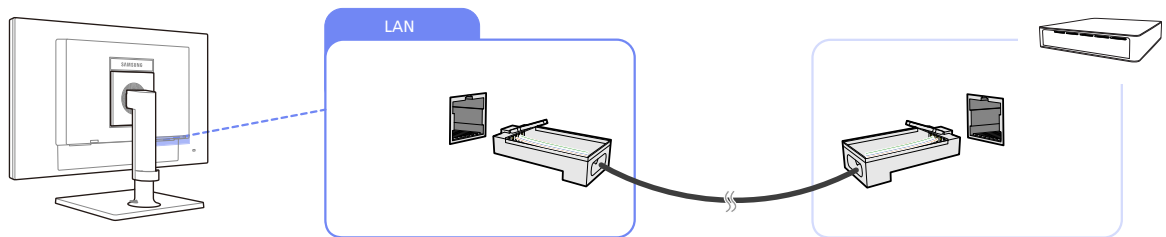


- 2 Select **Control Panel** → **System** → **Device Manager** → **Keyboard** → **Power Management** → **Allow this device to wake the computer**.



2.2 Connection to Use "Windows Embedded Standard 7"

2.2.1 LAN Connection

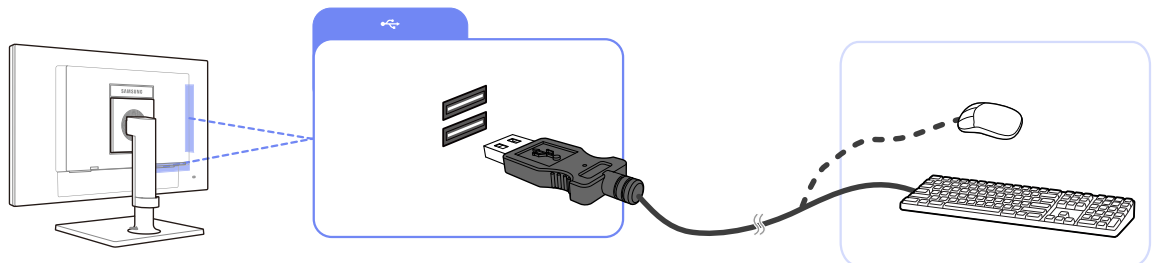


1 Connect the LAN cable to [LAN] on the back of the product.



- It is not supported when the network speed is below or equal to 10Mbps.
- Use Cat5(*STP Type) cable for the connection.
*STP: Shielded Twist Pair

2.2.2 Connecting USB Devices



1 Connect a USB device (keyboard, mouse, etc.) to [USB] on the back of the product.



The [USB] port supports USB 2.0.

2.3 Using "Windows Embedded Standard 7"

2.3.1 Logon

When the client starts, you can logon to the server by entering your username and password. By default, you are automatically logged in with an **Administrator** account and a blank password.

2.3.2 "Windows Embedded Standard 7" Desktop

Standard User

When logged on as a **Standard User**, there are many restrictions that protect the system from incorrect user actions. You cannot access the system drives and there are restrictions on configuring properties for them. To configure the client's advanced and detailed settings, log on as an **administrator**.



It is recommended to create **Standard User** accounts for general users that use the product.

Administrator

The **Administrator** account has privileges to configure the system settings and install/uninstall software. If it is required to restrict access privileges for security or administrator privileges are not needed, it is recommended to create **Standard User** accounts for general users.

The audio volume icon, Enhanced Write Filter status icon, and system time are displayed on the **Administrator** Taskbar. The **Administrator** privilege is required for adding and removing programs.

Log off, Restart, Shut down

- To log off the current session, shut down or restart your client, use the **Start** menu. [**Start** → **Shut down**]. The **Shut Down** Windows dialog box is displayed. To shut down the client immediately, select [**Start** → **Shut down**]. To select **Log off**, **Restart**, etc., move the mouse over the ► icon next to [**Shut down**]. Alternatively, you can perform Log off or **Shut down** using the Windows Security Dialog box by pressing [**Ctrl + Alt + Del**]. If 'Force Auto Log on' is activated, you will be immediately logged on after each log off.
- The Client **Log off**, **Restart** and **Shut down** take effect on the operations of the EWF (Enhanced Write Filter). To keep the changed system configuration, you must save a cache for the current system session into flash memory. Failing to do so will cause the changed configuration to be lost when the client is shut down or restarted. (In the case of logging off, the configuration is remembered when logging in again.) For more information on the **Enhanced Write Filter**, refer to the Program Help.

2.3.3 Programs

Remote Desktop Connection

You can control a running terminal server or another computer (**Windows 95** or later) remotely through a remote desktop connection.

- **Remote Desktop**

- **Windows 7 Professional** or **Windows 2000/2003/2008 Server** must be installed on the computer to be controlled remotely. This computer is called a host.
- A remote computer running on an operating system later than **Windows 95** is required. This remote computer is called a client. The client software for the remote desktop connection must be installed on the client.
- You must also be connected to the Internet. A broadband Internet connection is good for high performance. However, because the remote desktop transmits a minimum set of data including the display data and keyboard data to control the host remotely, a broadband Internet connection is not required. You can run a remote desktop on a low bandwidth Internet connection.



When running a remote desktop on **Windows 7 Professional**, you cannot use the operating system of your computer.

- **Enabling Your Computer as the Host**

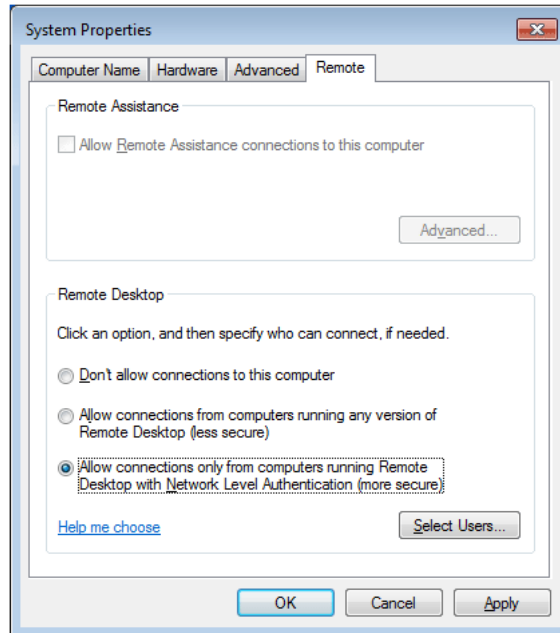
You must enable the **Remote Desktop** feature to control it from another computer. You must be logged on as an **Administrator** or a member of the **Administrators group** to enable **Remote Desktop** on your computer. Follow these steps:

- 1 Open the **System** folder in the **Control Panel**.
- 2 Go to [**Start** → **Control Panel** → **System and Security** → **System**], and click **Remote settings**.
- 3 If you want to block other PCs from accessing your PC using **Remote Desktop** or **RemoteApp**, select "**Don't allow connections to this computer.**"



- To allow a remote PC to access your PC using any version of **Remote Desktop** or **RemoteApp**, select "**Allow connections from computers running any version of Remote Desktop (less secure).**" This option is suitable if you do not know the **Remote Desktop Connection** version being used on other PCs. Note that this option is less secure than the next option (option 3).
- To allow a remote PC to access your PC using a **Remote Desktop** or **RemoteApp** version requiring a network level authentication, select "**Allow connections only from computers**

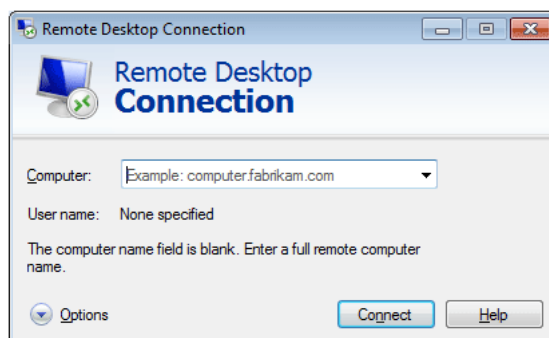
running **Remote Desktop with Network Level Authentication (more secure)**" to run **Remote Desktop** using network-level authentication.



- Start a Remote Desktop Session on the Client

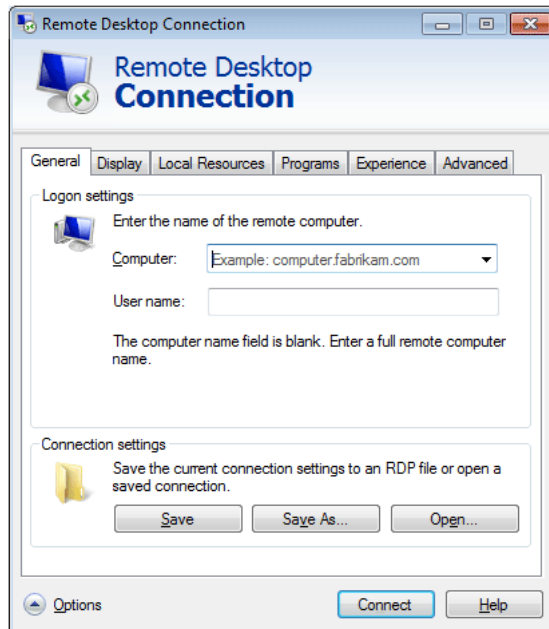
Once you have enabled your host computer to allow remote connections and installed the client software on a Windowsbased client computer, you are ready to start a **Remote Desktop** session. You must first establish a virtual private network connection or remote access service connection from your client computer to your host computer. To connect to another remote desktop, follow the instructions below.

- 1 Go to [**Start** → **All Programs** → **Accessories** → **Remote Desktop Connection**] or double-click the **Remote Desktop Connection** icon to open **Remote Desktop Connection**.
- 2 Enter the host computer name. You can configure detailed settings by clicking the **Options** button.

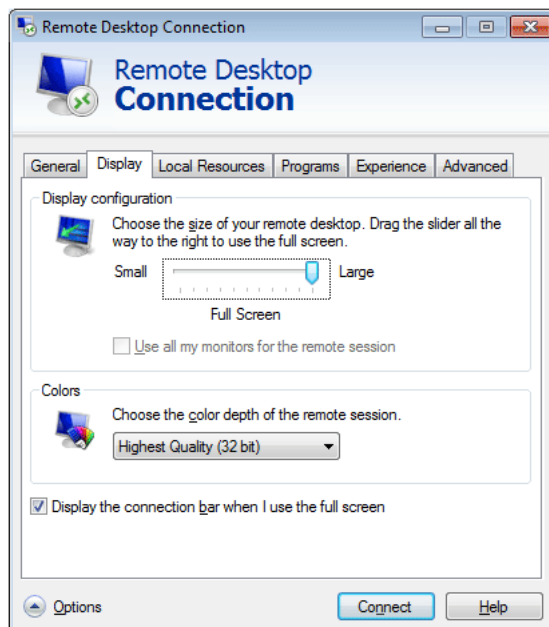


3 Options

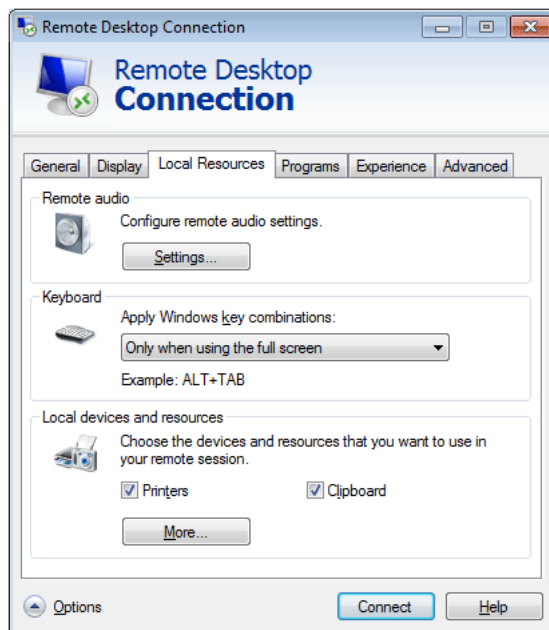
- **General** : Enter in the login information for the host computer. To log in automatically, enter in the user name and password.



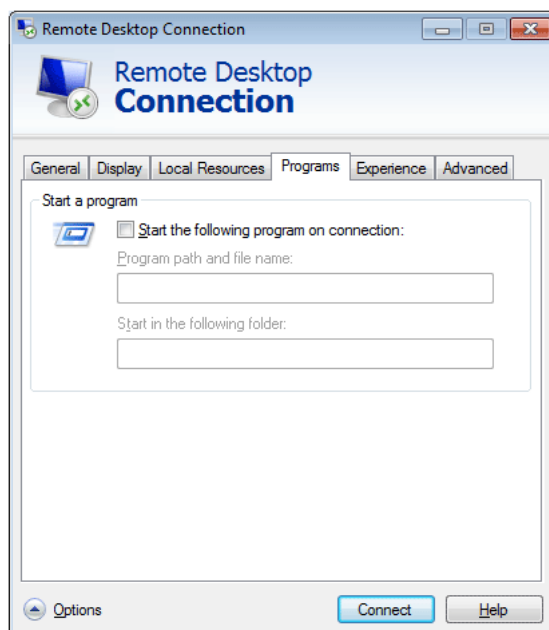
- **Display** : The **Remote Desktop Connection** sends and receives compressed screen data. If you set the resolution and color quality to the high option, the speed may become slow.



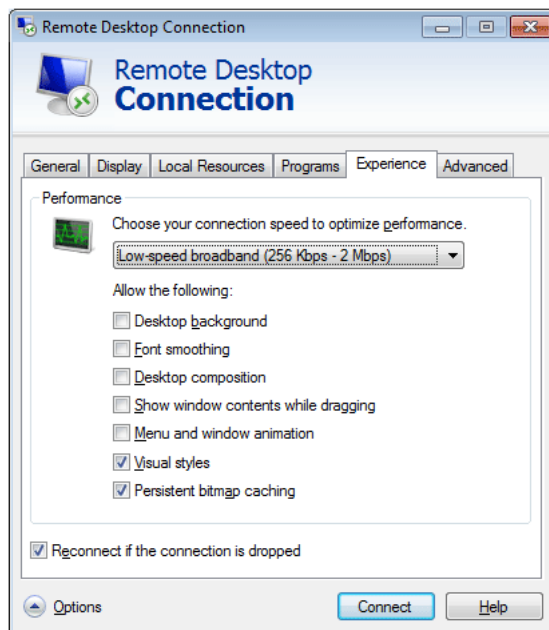
- **Local Resources** : Specify whether to use the hard disks and ports.



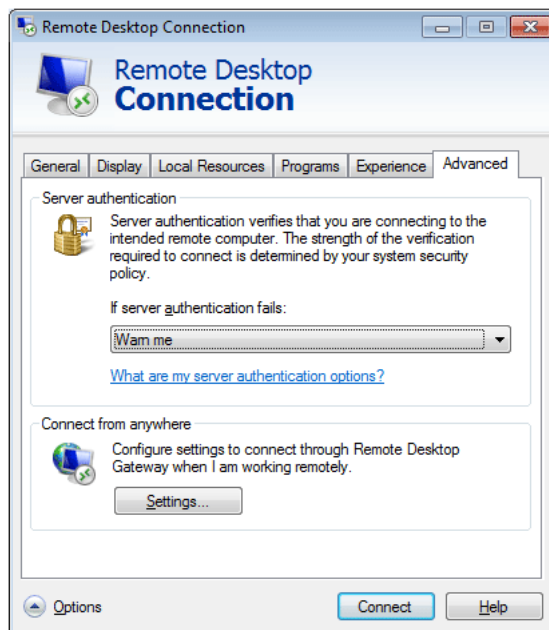
- **Programs** : Select an application and specify the folder where you want to run the application when a connection is established to the host PC.



- **Experience** : Specify the connection speed and the menu items you want to use on the remote PC connected. The settings specified will be shared with the host PC.



- **Advanced** : Protect your personal information when a connection is established.



- 4 Click **Connect**. The Log On to Windows dialog box appears.
- 5 In the "Log On to Windows" dialog box, type your username, password, and domain (if required), and then click **OK**. The **Remote Desktop** window will open and you will see the desktop settings, files, and programs that are on the host computer.



For more information on **Remote Desktop Connections**, visit the **Microsoft** web site.

Internet Explorer

A WES Client includes **Internet Explorer**. This program is permitted for all users. **Microsoft** website.

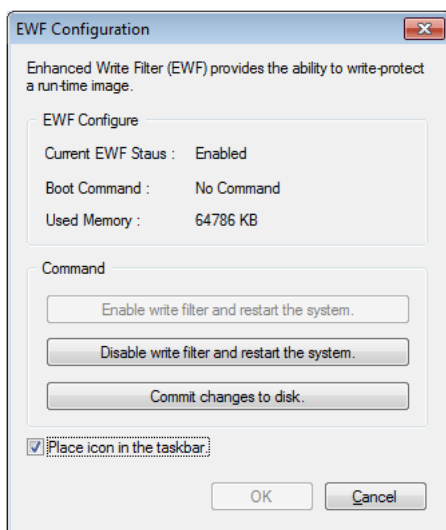


For more information on Internet Explorer, visit the Microsoft website.

Enhanced Write Filter (EWF)

Enhanced Write Filter (EWF) protects a flash volume from write access and consequently, preserves the durability of the flash device. **EWF** provides read and write access through a cache to the client instead of allowing direct access to a flash volume.

If **EWF** is activated, data is not stored to the flash. The data stored in the cache is only effective while the client is operating. The cached data will be lost when restarting or shutting down your client. Therefore, to store the data written to the registry, favorites and cookie folders, etc., the content stored in the cache should be transferred to the flash. An error message is displayed when it is not possible to write to the cache due to a lack of memory. If this message is displayed, you have to deactivate **EWF** to flush the **EWF** cache. The user can double-click the **EWF** icon on the tray at the bottom right of the screen to call the **EWF** Manager. A user can also change the **EWF** configuration by entering **EWF** management commands at the command prompt. This task requires the **Administrator** privilege.



- **Enable write filter and restart the system.**

If the **EWF** is disabled, enable it. If this item is selected, the cache is flushed and the **EWF** is enabled. After restarting your computer, the configurations and file system information for the client are written to a cache. You can also perform this operation by entering "**ewfmgr.exe c: -enable**" at the command prompt and restarting your computer.

- **Disable write filter and restart the systems.**

This item is activated when the **EWF** is running. If this item is selected, the current states of the client (saved in a cache) are saved to a flash volume and the **EWF** is disabled. After restarting your computer, the configurations and file system information for the client are written to a flash volume.

You can also perform this operation by entering "**ewfmgr.exe c: -commitanddisable**" at the command prompt and restarting your computer.

- **Commit changes to disk.**

This item is activated when the **EFW** is running. If this item is selected, the current states of the client (saved in a cache) are saved to a flash volume. However, the state of **EFW** will not be changed. You can also perform this operation by entering "**ewfmgr.exe c: -commit**" at the command prompt.



You can view the configurations for the protected volumes by entering "**ewfmgr.exe c:**" at the command prompt.

File-Based Write Filter (FBWF)

The **File-Based Write Filter (FBWF)** protects the memory of the client from being overwritten by any unauthorized user. By restricting excessive writing into the memory, the **FBWF** allows you to use the client for a long time. If you request I/O, the **FBWF** has the client perform its operations using the cache instead of the memory so that the memory can be protected.

The data saved in the cache is preserved while the client operates normally. It is removed when it is restarted or exited. To save the changes, you should write the relevant file onto the disk using the commit command. If you don't know which file is changed, disable the **FBWF**, change it, and enable it again.

You can control the **FBWF** using the various options of the command at a command prompt.

- **FBWF Configuration**

- **Current FBWF status** : Displays the current status of the **FBWF (Enabled or Disabled)**.
- **Boot command** : Displays the **FBWF** command that will be performed at the next boot-up.
- **RAM Used by FBWF** : Displays the size of the RAM the **FBWF** is using. If the current status is set to "**Disabled**", the used memory is displayed as 0 KB.
- **Threshold** : Displays the maximum size of the RAM that the **FBWF** can use.

- **FBWF Command**

- **Enable FBWF and reboot the system** : Enables the disabled **FBWF** and restarts the client. If the client is not restarted, only the boot command is changed to **BWF_ENABLE** and the current status is not changed.
- **Disable FBWF and reboot the system** : Disables the enabled **FBWF** and restarts the client. If the client is not restarted, only the boot command is changed to **FBWF_DISABLE** and the current status is not changed.
- **Commit files** : Even if the disks are protected by the **FBWF**, you can add or delete the files you want to save on them. To write the changes onto the disk, click the **[Write the changes to the disk]** button.

- **Session Status**

- **Current session** : Displays the volumes being protected by the **FBWF** and a list of the folders and files on those volumes that are excepted from protection by the **FBWF**.

- **Next session** : Select the volumes that will be protected by the **FBWF** when the client is booted up next time. Also, select the folders and files that you want to except from protection by the **FBWF**.

Windows Media Player

The **WES** Client includes **Windows Media Player 12**. With **Windows Media Player**, you can play audio and video files on a website.

2.3.4 Configuring Utilities

Local Drive

- C Drive

The C drive is used for the system. The client OS will not operate if space available on the system drive is not sufficient. Ensure sufficient space is available on the C drive. **EFW** can help maintain available space by preventing the C drive being written to directly.

- **Saving Files**

Your client uses a fixed size of flash memory. Therefore, it is better to save files to the server rather than to your client.

Mapping a Network Drive

The **Administrator** can map a folder to a network drive. To keep the mapping information after restarting the client, take note of these directions carefully.

- Select the **Reconnect** at logon checkbox in the **Map Network Drive** dialog box.
- If the **EFW** or **FBWF** is enabled, the changes are saved on the disk.

2.3.5 Recover the System

Overview

The **WES** client provides a feature that restores the system to the last backup or default factory settings in the occurrence of a critical system issue during operation. You can back up an OS image which is working normally to USB memory or the PXE server. You can revert to a backed up image when your client has one of these problems:

- When a system file is deleted accidentally or is corrupted
- When the client computer is unstable or there is a problem with a device driver
- When problems occur, after installing a new program or device
- When the client computer is infected with a virus
- When **Windows Embedded Standard** fails to start When a system file is deleted accidentally or is corrupted

How to Recover the System

- Recovery Using USB Memory

By following these steps, you can save all necessary files to USB memory, and boot up with the backed up system on the USB memory and recover the system.

- 1 Format the USB memory device to enable the system to boot.
- 2 Save the **Windows Embedded Standard** image and the Backup/Recovery Utility which will be recovered later to your USB memory.
- 3 Boot up with the USB memory.
- 4 Recover the system using the **Windows Embedded Standard** image and the Backup/Recovery Utility in the USB memory.

- Recovery Using Network Booting

This method is provided through the **PXE (Preboot eXecution Environment)** server. The **PXE** sever provides a client/server interface based on **TCP/IP**, **DHCP**, and **TFTP**. It allows an administrator at a remote location to configure and boot the operating system onto a client over a network.

- Implement a **PXE** server.
- Save the **Windows Embedded Standard** image and the Backup/Recovery Utility which will be recovered later onto the **PXE** server.
- Boot the client via the network.
- Recover the system using the **Windows Embedded Standard** image and the Backup/Recovery Utility saved on the **PXE** server via the network.



For more information, refer to the **PXE** Server User Manual.

- Using the Standalone restore solution

Restore the system using a restore image saved on the product.

- 1 After the power is connected, press the **Home** key immediately after the system starts during boot to enter the boot menu.
- 2 Select the **Recovery Mode** menu and press the **P** key to enter "**admin**" which is the password.
- 3 Run the **Recovery Mode** menu by pressing the **Enter** key.
- 4 If the **PROMPT** "**root@xxxx:/#**" appears, enter "**recovery**" to restore the system.
- 5 If **PROMPT** appears after a message informing that the system is successfully restored, run the **reboot** command to restart the system.

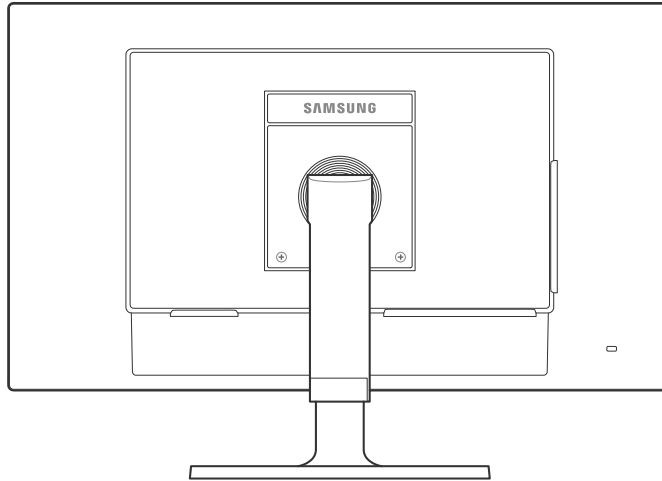
Disk is configured as follows. Deleting or changing partitions may disable booting or the **Standalone** restore solution.

BOOT_AGENT	WES7	BACKUP
Drive Letter is not defined	C:	Drive Letter is not defined



Data saved by the user and customized settings are deleted after a system restore.

3.1 Before Connecting



3.1.1 Pre-connection Checkpoints

- Before connecting a source device, read the user manual provided with it.
The number and locations of ports on source devices may differ from device to device.
- Do not connect the power cable until all connections are completed.
Connecting the power cable during connection may damage the product.
- Check the types of ports at the back of the product you want to connect.

3.2 Connecting and Using a PC

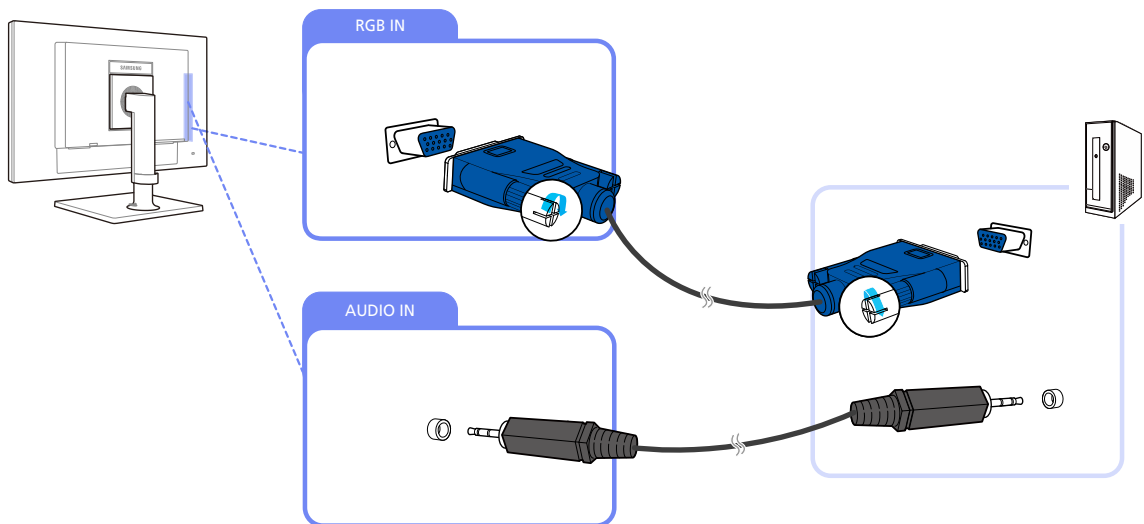
3.2.1 Connecting to a PC

- Do not connect the power cable before connecting all other cables.
Ensure you connect a source device first before connecting the power cable.



Connecting parts may differ in different products.

Connection Using the D-SUB Cable (Analog Type)



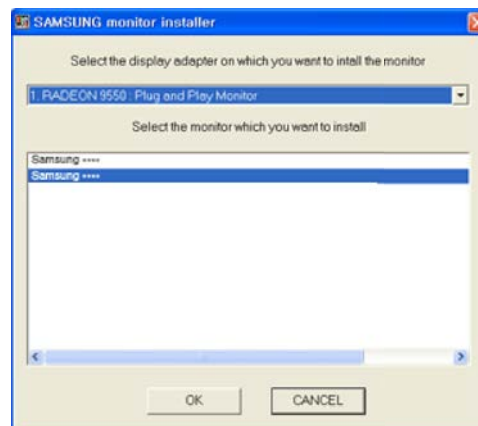
- 1 Connect the D-SUB cable to the [RGB IN] port on the back of the product and the [RGB OUT] port on the PC.
- 2 Connect a sound output cable to the [AUDIO IN] port on the product and the sound output port on the PC.
- 3 Connect the power cable to the product and power outlet. Turn on the power switch on the PC.
(For details, refer to "3.3.5 Connecting the Power".)
- 4 Press [⏪/⏩] to change the input source to **Analog**.

3.2.2 Driver Installation



- You can set the optimum resolution and frequency for this product by installing the corresponding drivers.
- An installation driver is contained on the CD supplied with the product.
- If the file provided is faulty, visit the Samsung homepage (<http://www.samsung.com>) and download the file.

- 1 Insert the user manual CD provided with the product into the CD-ROM drive.
- 2 Click "Windows Driver".
- 3 Follow the instructions given on the screen to proceed with installation.
- 4 Select your product model from the list of models.



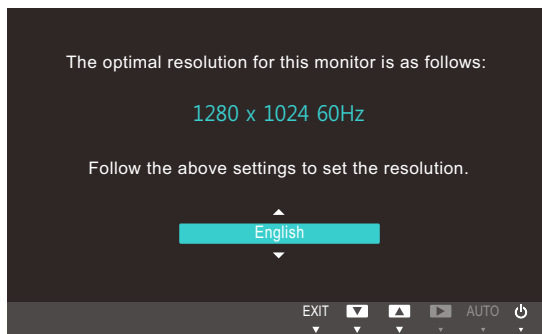
- 5 Go to Display Properties and check that the resolution and refresh rate are appropriate. Refer to your Windows OS manual for further details.

3.2.3 Setting Optimum Resolution

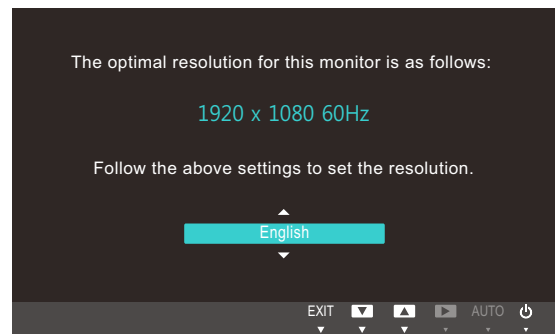
An information message about setting optimum resolution will appear if you power on the product for the first time after purchase.

Select a language and change the resolution to the optimum value.

TC191W



TC241W



- 1 Press [\blacktriangle / \blacktriangledown] to move to the language you want and press [MENU].
- 2 To hide the information message, press [MENU].



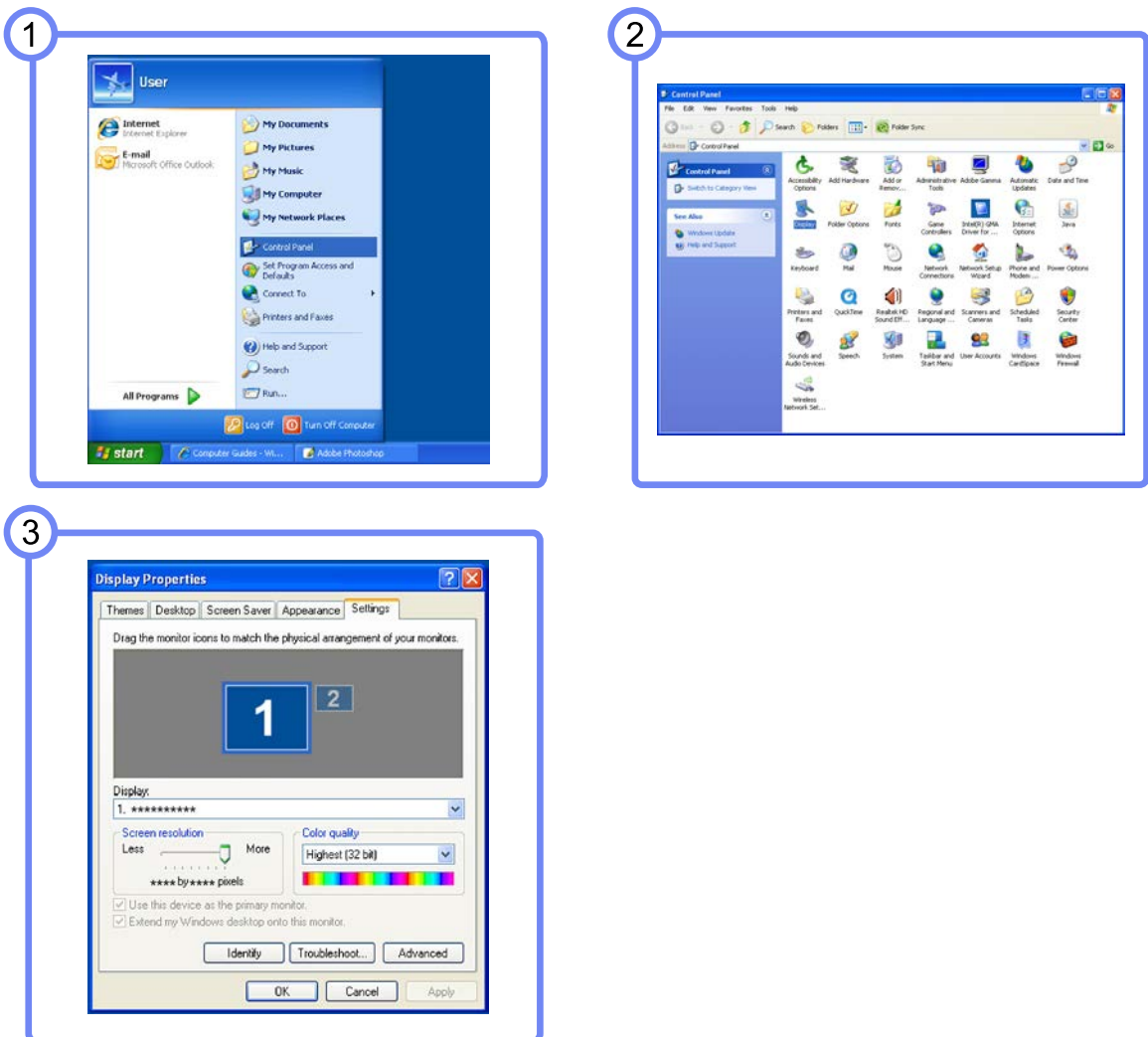
- If the optimum resolution is not selected, the message will appear up to three times for a specified time even when the product is turned off and on again.
- The optimum resolution can also be selected in **Control Panel** on your PC.

3.2.4 Changing the Resolution Using a PC

- Adjust the resolution and refresh rate in Control Panel on your PC to obtain optimum picture quality.
- The picture quality of TFT-LCDs may degrade if the optimum resolution is not selected.

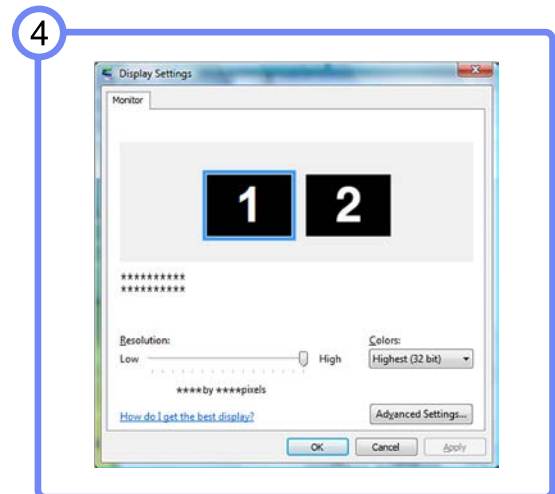
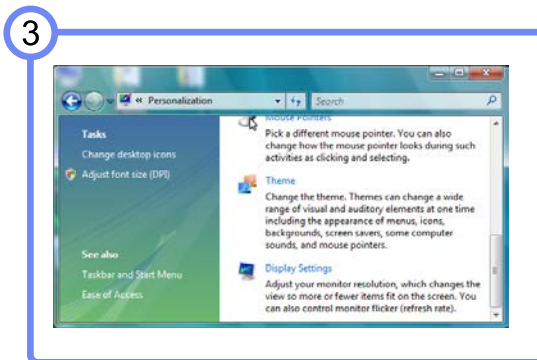
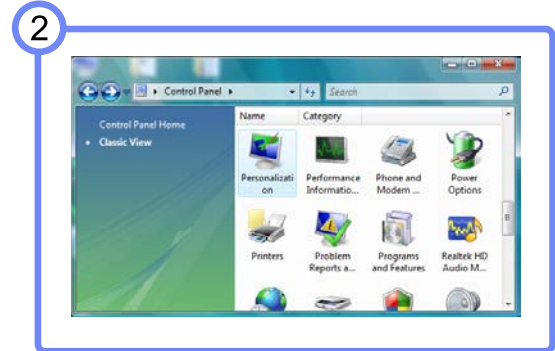
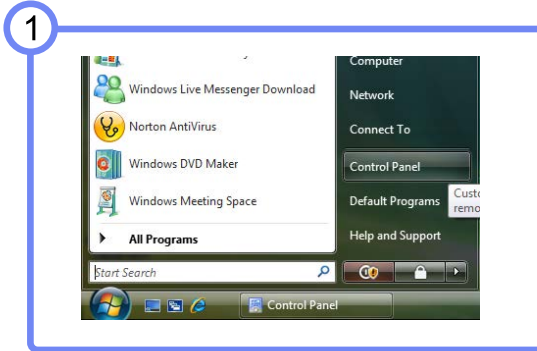
Changing the Resolution on Windows XP

Go to **Control Panel** → **Display** → **Settings** and change the resolution.



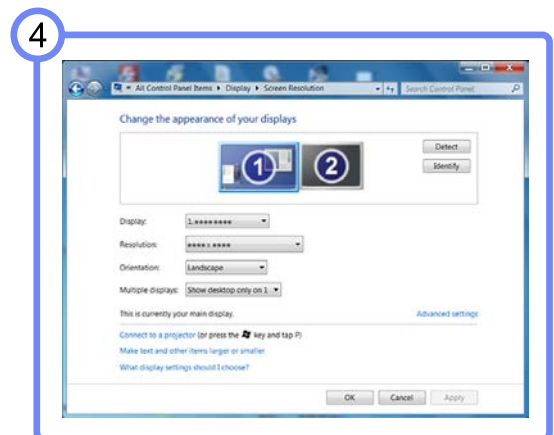
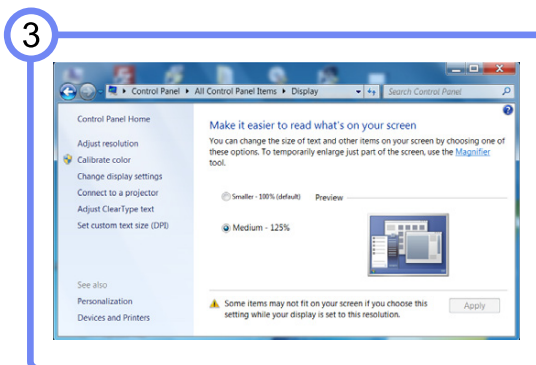
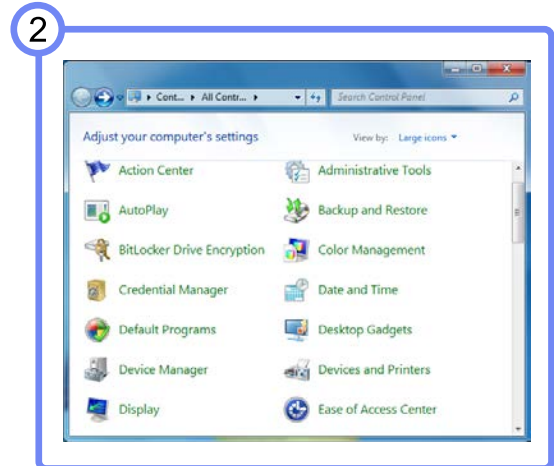
Changing the Resolution on Windows Vista

Go to **Control Panel** → **Personalization** → **Display Settings** and change the resolution.



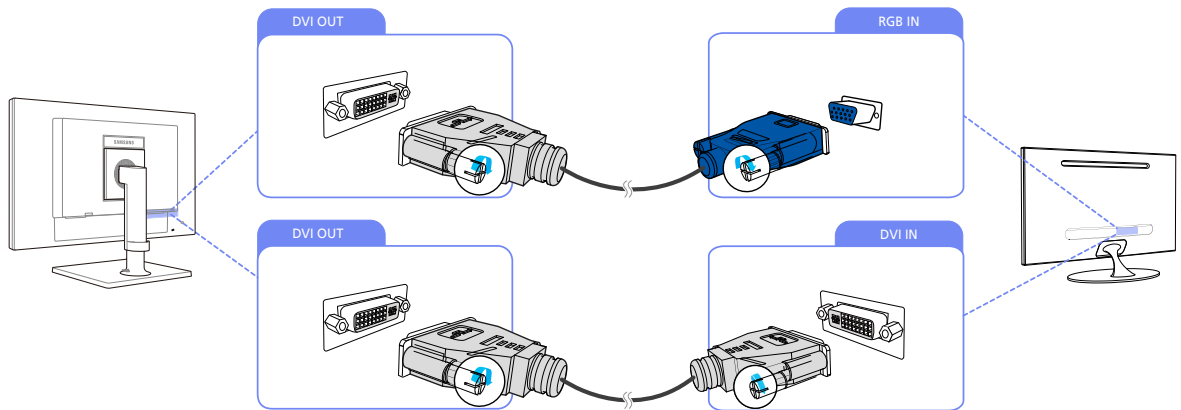
Changing the Resolution on Windows 7

Go to **Control Panel** → **Display** → **Screen Resolution** and change the resolution.



3.3 Connecting to a Video Device

3.3.1 Connecting to a Dual Monitor

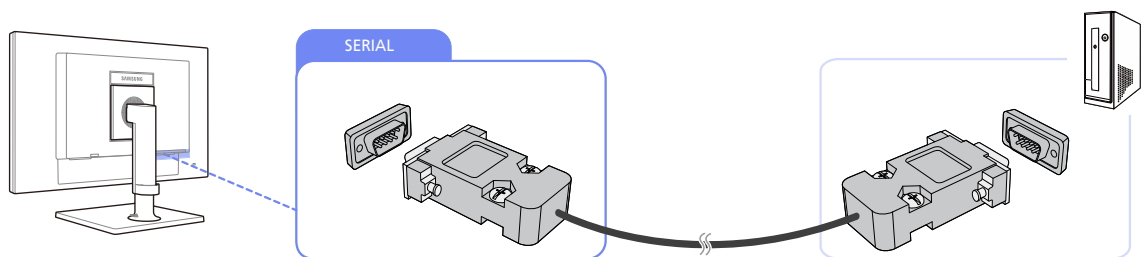


- 1 Connect [DVI OUT] on the product to [DVI IN] or [RGB IN] on another monitor using a DVI or DVI to D-SUB cable.
- 2 Connect the power cable to the product and power outlet. Turn on the power switch on the PC. (For details, refer to "3.3.5 Connecting the Power".)



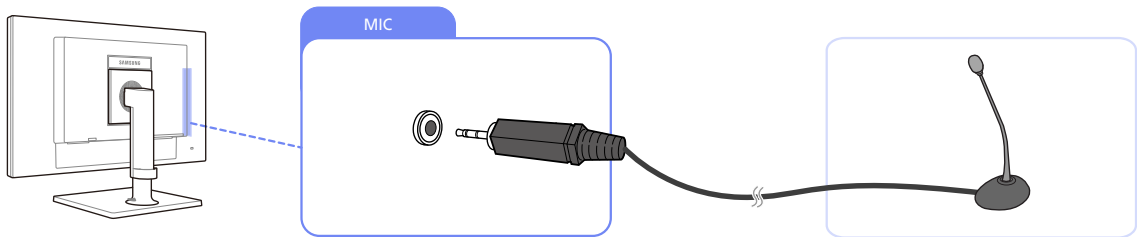
- The [DVI OUT] port can be used only to connect to a dual monitor.
- Connect to the [DVI OUT] port to display the same picture on another monitor such as the projector.
(For presentation purposes)
- The maximum resolution is 1920x1200 when a dual monitor is connected.

3.3.2 Connecting a SERIAL cable



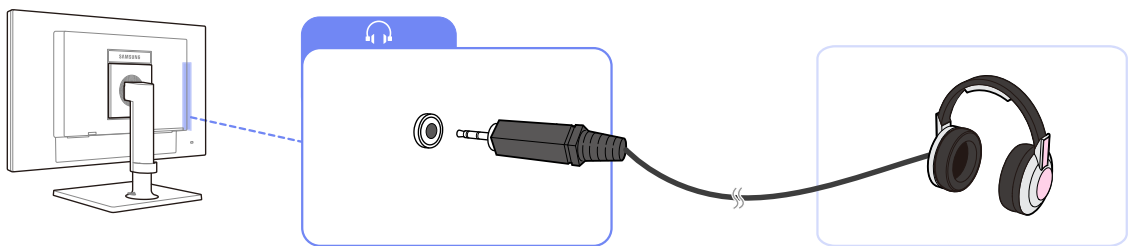
- 1 Using the RS-232C cable, connect [SERIAL] on the back of the product to [SERIAL] on a device or PC that supports RS232C connection (interface).

3.3.3 Connecting a Microphone



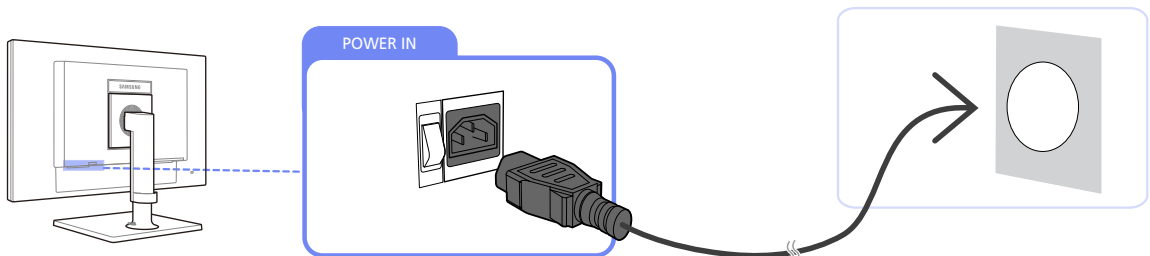
- 1 Connect the microphone to [MIC] on the back of the product.

3.3.4 Connecting to Headphones



- 1 Connect an audio output device (headphones) to [🎧] on the back of the product.

3.3.5 Connecting the Power



- 1 Connect the power cable to the product and power outlet.

4

Screen Setup

Configure the screen settings such as brightness and color tone.

4.1 Brightness

You can adjust the general brightness of the picture. (Range: 0~100)

A higher value will make the picture appear brighter.

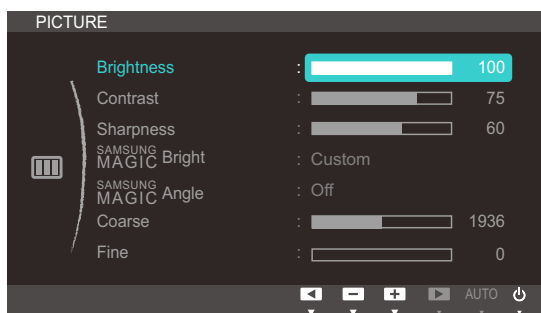


- This menu is not available when **SAMSUNG MAGIC Bright** is set to **Dynamic Contrast** mode.
- This menu is not available when **Eco Saving** is set to **On**.

4.1.1 Configuring Brightness

- 1 Press [MENU] on the product.
- 2 Press [▲/▼] to move to **PICTURE** and press [□/⏪] on the product.
- 3 Press [▲/▼] to move to **Brightness** and press [□/⏪] on the product.

The following screen will appear.



- 4 Adjust the **Brightness** using the [▲/▼] buttons.

4.2 Contrast

Adjust the contrast between the objects and background. (Range: 0~100)

A higher value will increase the contrast to make the object appear clearer.

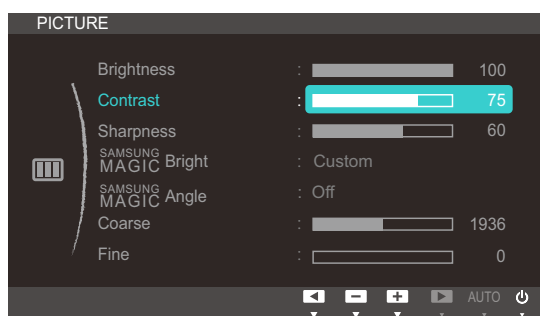


- This menu is not available when **SAMSUNG MAGIC Bright** is in **Cinema** or **Dynamic Contrast** mode.
- This menu is not available when **SAMSUNG MAGIC Color** is in **Full** or **Intelligent** mode.

4.2.1 Configuring Contrast

- 1 Press [MENU] on the product.
- 2 Press [▲/▼] to move to **PICTURE** and press [□/⏪] on the product.
- 3 Press [▲/▼] to move to **Contrast** and press [□/⏪] on the product.

The following screen will appear.



- 4 Adjust the **Contrast** using the [▲/▼] buttons.

4.3 Sharpness

Make the outline of objects more clear or blurry. (Range: 0~100)

A higher value will make the outline of objects clearer.

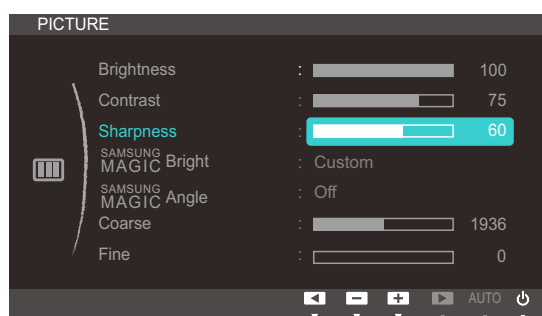


- This menu is not available when **SAMSUNG MAGIC Bright** is in **Cinema** or **Dynamic Contrast** mode.
- This menu is not available when **SAMSUNG MAGIC Color** is in **Full** or **Intelligent** mode.

4.3.1 Configuring Sharpness

- 1 Press [MENU] on the product.
- 2 Press [▲/▼] to move to **PICTURE** and press [□/⏪] on the product.
- 3 Press [▲/▼] to move to **Sharpness** and press [□/⏪] on the product.

The following screen will appear.



- 4 Adjust the **Sharpness** using the [▲/▼] buttons.

4.4 SAMSUNG MAGIC Bright

This menu provides an optimum picture quality suitable for the environment where the product will be used.



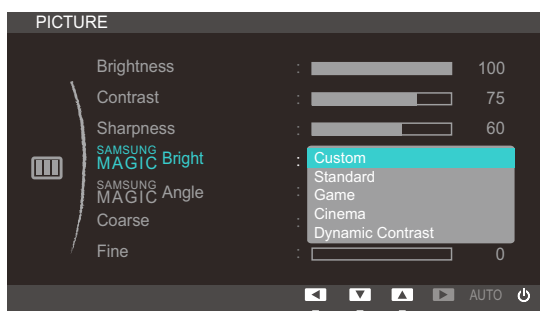
- This menu is not available when **Eco Saving** is set to **On**.
- This menu is not available when **SAMSUNG MAGIC Angle** is enabled.

This feature provides the viewing angle, brightness, and tint to suit your preferences.

4.4.1 Configuring SAMSUNG MAGIC Bright

- 1 Press [MENU] on the product.
- 2 Press [▲/▼] to move to **PICTURE** and press [□/⊞] on the product.
- 3 Press [▲/▼] to move to **SAMSUNG MAGIC Bright** and press [□/⊞] on the product.

The following screen will appear.



- **Custom:** Customize the contrast and brightness as required.
 - **Standard:** Obtain a picture quality suitable for editing documents or using Internet.
 - **Game:** Obtain a picture quality suitable for playing games that involve many graphic effects and dynamic movements.
 - **Cinema:** Obtain the brightness and sharpness of TVs suitable for enjoying video and DVD content.
 - **Dynamic Contrast:** Obtain balanced brightness through automatic contrast adjustment.
- 4 Press [▲/▼] to move to the option you want and press [MENU].
 - 5 The selected option will be applied.

4.5 SAMSUNG MAGIC Angle

SAMSUNG MAGIC Angle allows you to configure the settings to obtain the optimum picture quality according to your viewing angle.



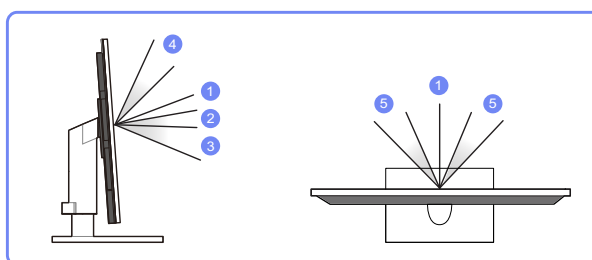
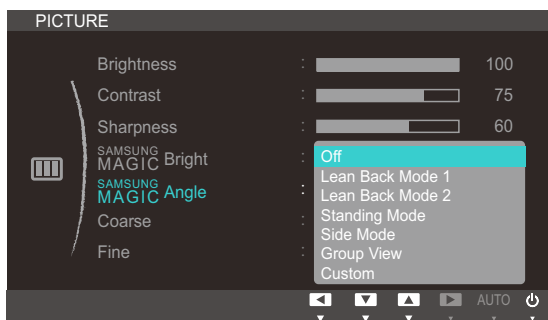
- This menu is not available when **SAMSUNG MAGIC Bright** is in **Cinema** or **Dynamic Contrast** mode.
- This menu is not available when **SAMSUNG MAGIC Color** is enabled.

This feature provides the viewing angle, brightness, and tint to suit your preferences.

4.5.1 Configuring SAMSUNG MAGIC Angle

- 1 Press [MENU] on the product.
- 2 Press [▲/▼] to move to **PICTURE** and press [□/⏏] on the product.
- 3 Press [▲/▼] to move to **SAMSUNG MAGIC Angle** and press [□/⏏] on the product.


The following screen will appear.



- **Off** ①: Select this option to view directly in front of the product.
 - **Lean Back Mode 1** ②: Select this option to view from a place slightly lower than the product.
 - **Lean Back Mode 2** ③: Select this option to view from a place lower than Lean Back Mode 1.
 - **Standing Mode** ④: Select this option to view from a place higher than the product.
 - **Side Mode** ⑤: Select this option to view from either side of the product.
 - **Group View**: Select this option for more than one viewer to view from places ①, ④, and ⑤.
 - **Custom**: **Lean Back Mode 1** will be applied by default if **Custom** is selected.
- 4 Press [▲/▼] to move to the option you want and press [MENU].
 - 5 The selected option will be applied.

4.6 Coarse

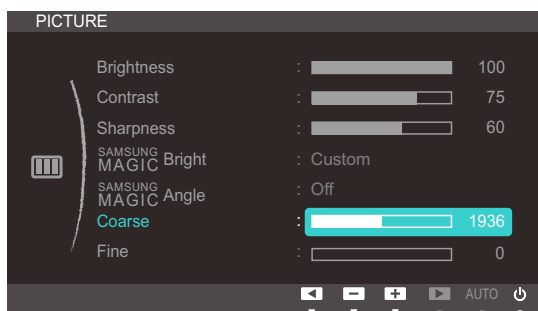
Adjust the screen frequency.

 This menu is available in **Analog** mode only.

4.6.1 Adjusting Coarse

- 1 Press [MENU] on the product.
- 2 Press [▲/▼] to move to **PICTURE** and press [↔] on the product.
- 3 Press [▲/▼] to move to **Coarse** and press [↔] on the product.

The following screen will appear.



- 4 Adjust the **Coarse** using the [▲/▼] buttons.

4.7 Fine

Fine-adjust the screen to obtain a vivid picture.

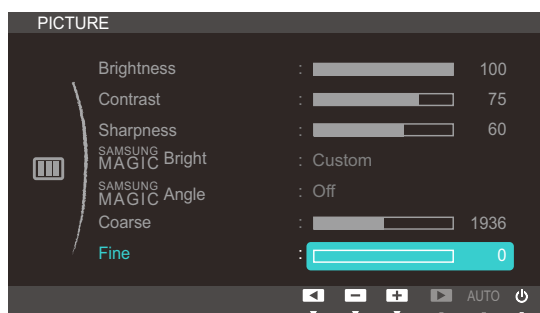


This menu is available in **Analog** mode only.

4.7.1 Adjusting Fine

- 1 Press [MENU] on the product.
- 2 Press [▲/▼] to move to **PICTURE** and press [↶/↷] on the product.
- 3 Press [▲/▼] to move to **Fine** and press [↶/↷] on the product.

The following screen will appear.



- 4 Adjust the **Fine** using the [▲/▼] buttons.

Configuring Tint

Adjust the tint of the screen. This menu is not available when **SAMSUNG MAGICBright** is set to **Cinema** or **Dynamic Contrast** mode.

5.1 SAMSUNG MAGIC Color

SAMSUNG MAGICColor is a new picture-quality improvement technology developed independently by Samsung, which delivers vivid natural colors without picture quality degradation.

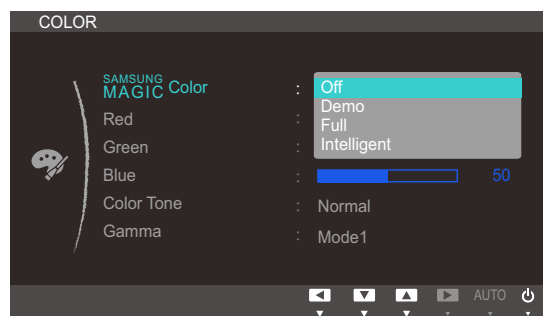


This menu is not available when **SAMSUNG MAGICAngle** is enabled.

5.1.1 Configuring SAMSUNG MAGIC Color

- 1 Press [MENU] on the product.
- 2 Press [▲/▼] to move to **COLOR** and press [□/◀▶] on the product.
- 3 Press [▲/▼] to move to **SAMSUNG MAGICColor** and press [□/◀▶] on the product.

The following screen will appear.



- **Off:** Disable **SAMSUNG MAGICColor**.
 - **Demo:** Compare normal screen mode with **SAMSUNG MAGICColor** mode.
 - **Full:** Obtain a vivid picture quality for all areas including the flesh colors in the picture.
 - **Intelligent:** Improve the chroma for all areas except the flesh colors in the picture.
- 4 Press [▲/▼] to move to the option you want and press [MENU].
 - 5 The selected option will be applied.

5.2 Red

Adjust the value of the color red in the picture. (Range: 0~100)

A higher value will increase the intensity of the color.

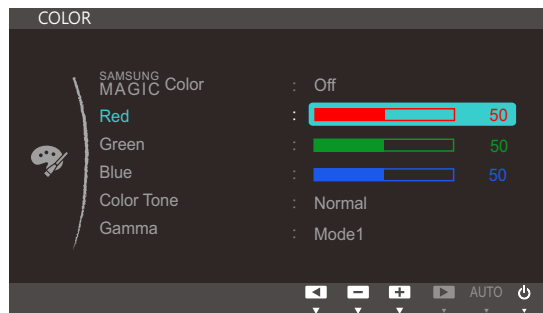


This menu is not available when **SAMSUNG MAGIC Color** is in **Full** or **Intelligent** mode.

5.2.1 Configuring Red

- 1 Press [MENU] on the product.
- 2 Press [▲/▼] to move to **COLOR** and press [□/⏪] on the product.
- 3 Press [▲/▼] to move to **Red** and press [□/⏪] on the product.

The following screen will appear.



- 4 Adjust the **Red** using the [▲/▼] buttons.

5.3 Green

Adjust the value of the color green in the picture. (Range: 0~100)

A higher value will increase the intensity of the color.

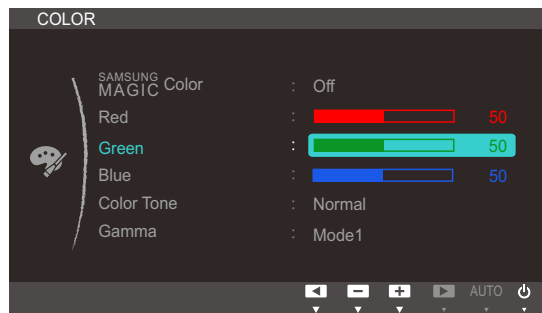


This menu is not available when **SAMSUNG MAGIC Color** is in **Full** or **Intelligent** mode.

5.3.1 Configuring Green

- 1 Press [MENU] on the product.
- 2 Press [▲/▼] to move to **COLOR** and press [□/↔] on the product.
- 3 Press [▲/▼] to move to **Green** and press [□/↔] on the product.

The following screen will appear.



- 4 Adjust the **Green** using the [▲/▼] buttons.

5.4 Blue

Adjust the value of the color blue in the picture. (Range: 0~100)

A higher value will increase the intensity of the color.



This menu is not available when **SAMSUNG MAGIC Color** is in **Full** or **Intelligent** mode.

5.4.1 Configuring Blue

- 1 Press [MENU] on the product.
- 2 Press [▲/▼] to move to **COLOR** and press [□/←] on the product.
- 3 Press [▲/▼] to move to **Blue** and press [□/←] on the product.

The following screen will appear.



- 4 Adjust the **Blue** using the [▲/▼] buttons.

5.5 Color Tone

Adjust the general color tone of the picture.

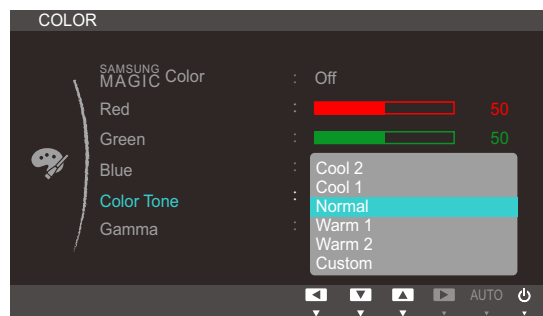


- This menu is not available when **SAMSUNG MAGIC Color** is in **Full** or **Intelligent** mode.
- This menu is not available when **SAMSUNG MAGIC Angle** is enabled.

5.5.1 Configuring the Color Tone Settings

- 1 Press [MENU] on the product.
- 2 Press [▲/▼] to move to **COLOR** and press [⏪/⏩] on the product.
- 3 Press [▲/▼] to move to **Color Tone** and press [⏪/⏩] on the product.

The following screen will appear.



- **Cool 2**: Set the color temperature to be cooler than **Cool 1**.
 - **Cool 1**: Set the color temperature to be cooler than **Normal** mode.
 - **Normal**: Display the standard color tone.
 - **Warm 1**: Set the color temperature to be warmer than **Normal** mode.
 - **Warm 2**: Set the color temperature to be warmer than **Warm 1**.
 - **Custom**: Customize the color tone.
- 4 Press [▲/▼] to move to the option you want and press [MENU].
 - 5 The selected option will be applied.

5.6 Gamma

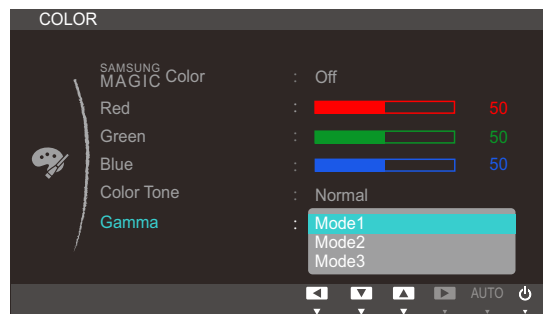
Adjust the mid-range brightness (Gamma) of the picture.



This menu is not available when **SAMSUNG MAGIC Angle** is enabled.

5.6.1 Configuring Gamma

- 1 Press [MENU] on the product.
- 2 Press [▲/▼] to move to **COLOR** and press [□/□] on the product.
- 3 Press [▲/▼] to move to **Gamma** and press [□/□] on the product.
The following screen will appear.



- 4 Press [▲/▼] to move to the option you want and press [MENU].
- 5 The selected option will be applied.

6.1 H-Position & V-Position

H-Position: Move the screen to the left or right.

V-Position: Move the screen up or down.



This menu is available in **Analog** mode only.

6.1.1 Configuring H-Position & V-Position

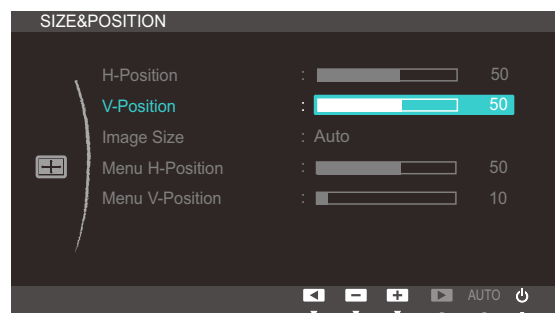
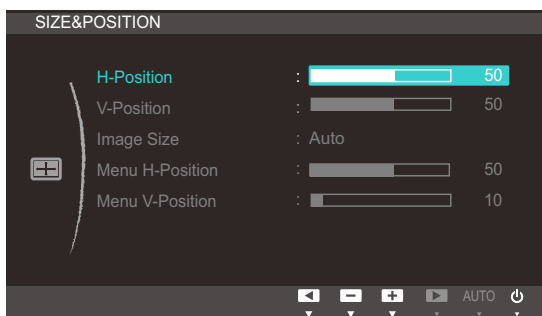
- 1 Press [MENU] on the product.
- 2 Press [▲/▼] to move to **SIZE&POSITION** and press [⏪/⏩] on the product.
- 3 Press [▲/▼] to move to **H-Position** or **V-Position**, and press [⏪/⏩].

The following screen will appear.

TC191W



TC241W



- 4 Press [▲/▼] to configure **H-Position** or **V-Position**.

6.2 Image Size (TC241W model only)

Change the picture size.

6.2.1 Changing the Image Size

- 1 Press [MENU] on the product.
- 2 Press [▲/▼] to move to **SIZE&POSITION** and press [□/◀] on the product.
- 3 Press [▲/▼] to move to **Image Size** and press [□/◀] on the product.

The following screen will appear.

TC241W



- **Auto**: Display the picture according to the aspect ratio of the input source.
 - **Wide**: Display the picture in full screen regardless of the aspect ratio of the input source.
- 4 Press [▲/▼] to move to the option you want and press [MENU].
 - 5 The selected option will be applied.

6.3 Menu H-Position & Menu V-Position

Menu H-Position: Move the menu position to the left or right.

Menu V-Position: Move the menu position up or down.

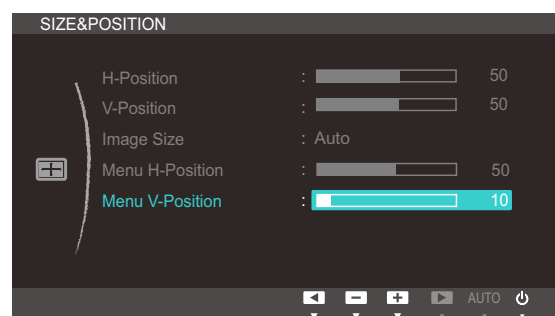
6.3.1 Configuring Menu H-Position & Menu V-Position

- 1 Press [MENU] on the product.
- 2 Press [▲/▼] to move to **SIZE&POSITION** and press [□/⇄] on the product.
- 3 Press [▲/▼] to move to **Menu H-Position** or **Menu V-Position**, and press [□/⇄].
The following screen will appear.

TC191W



TC241W



- 4 Press [▲/▼] to configure **Menu H-Position** or **Menu V-Position**.

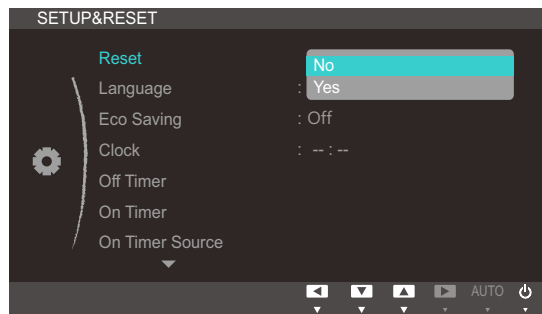
7.1 Reset

Return all the settings for the product to the default factory settings.

7.1.1 Initializing Settings (Reset)

- 1 Press [MENU] on the product.
- 2 Press [▲/▼] to move to **SETUP&RESET** and press [⏪/⏩] on the product.
- 3 Press [▲/▼] to move to **Reset** and press [⏪/⏩] on the product.

The following screen will appear.



- 4 Press [▲/▼] to move to the option you want and press [MENU].
- 5 The selected option will be applied.

7.2 Language

Set the menu language.

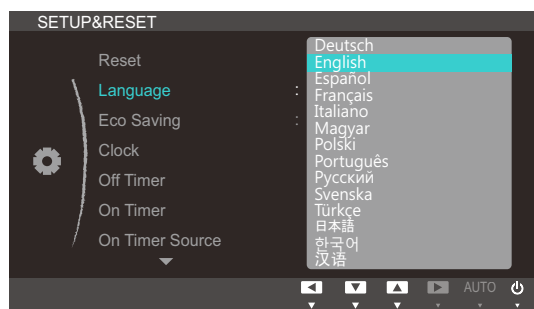


- A change to the language setting will only be applied to the onscreen menu display.
- It will not be applied to other functions on your PC.

7.2.1 Changing the Language

- 1 Press [MENU] on the product.
- 2 Press [▲/▼] to move to **SETUP&RESET** and press [□/◀] on the product.
- 3 Press [▲/▼] to move to **Language** and press [□/◀] on the product.

The following screen will appear.



- 4 Press [▲/▼] to move to the language you want and press [MENU].
- 5 The selected option will be applied.

7.3 Eco Saving

The **Eco Saving** function reduces power consumption by controlling the electric current used by the monitor panel.

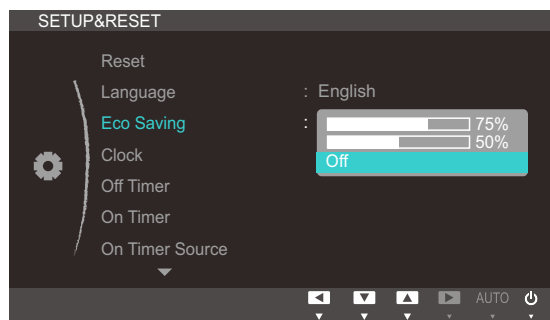


This menu is not available when **SAMSUNG MAGIC Bright** is in **Dynamic Contrast** mode.

7.3.1 Configuring Eco Saving

- 1 Press [MENU] on the product.
- 2 Press [▲/▼] to move to **SETUP&RESET** and press [⏪/⏩] on the product.
- 3 Press [▲/▼] to move to **Eco Saving** and press [⏪/⏩] on the product.

The following screen will appear.



- **75%**: Change the monitor power consumption to 75% of the default level.
 - **50%**: Change the monitor power consumption to 50% of the default level.
 - **Off**: Deactivate the **Eco Saving** function.
- 4 Press [▲/▼] to move to the option you want and press [MENU].
 - 5 The selected option will be applied.

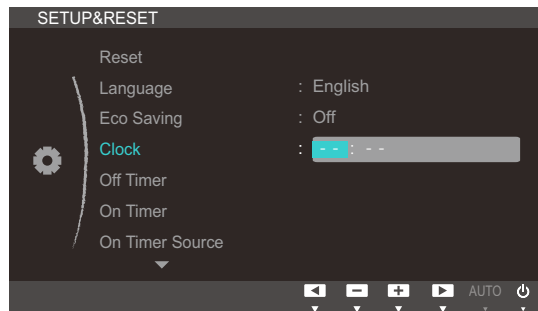
7.4 Clock

Set the current time manually.

7.4.1 Configuring Clock

- 1 Press [MENU] on the product.
- 2 Press [▲/▼] to move to **SETUP&RESET** and press [⏪/⏩] on the product.
- 3 Press [▲/▼] to move to **Clock** and press [⏪/⏩] on the product.

The following screen will appear.



- 4 Press [▲/▼] to configure **Clock**.

7.5 Off Timer

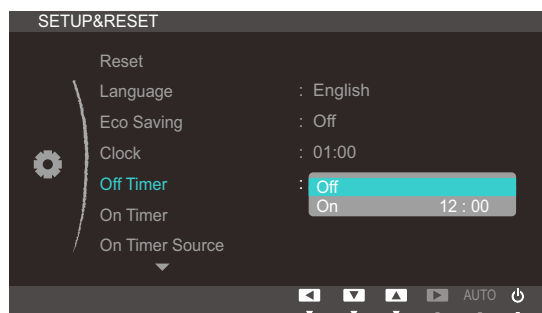
You can set the product to automatically turn off.

 **Off Timer** is enabled only when the **Clock** is set.

7.5.1 Configuring Off Timer

- 1 Press [MENU] on the product.
- 2 Press [▲/▼] to move to **SETUP&RESET** and press [↩/↪] on the product.
- 3 Press [▲/▼] to move to **Off Timer** and press [↩/↪] on the product.

The following screen will appear.



- 4 Press [▲/▼] to move to the option you want and press [MENU].
- 5 The selected option will be applied.

7.6 On Timer

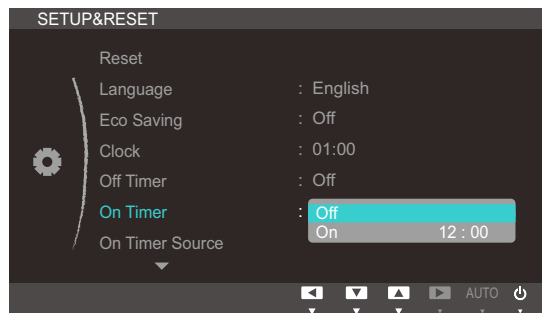
You can set the product to automatically turn on.

 **On Timer** is enabled only when the **Clock** is set.

7.6.1 Configuring On Timer

- 1 Press [MENU] on the product.
- 2 Press [▲/▼] to move to **SETUP&RESET** and press [↩/⏪] on the product.
- 3 Press [▲/▼] to move to **On Timer** and press [↩/⏪] on the product.

The following screen will appear.



- 4 Press [▲/▼] to move to the option you want and press [MENU].
- 5 The selected option will be applied.

7.7 On Timer Source

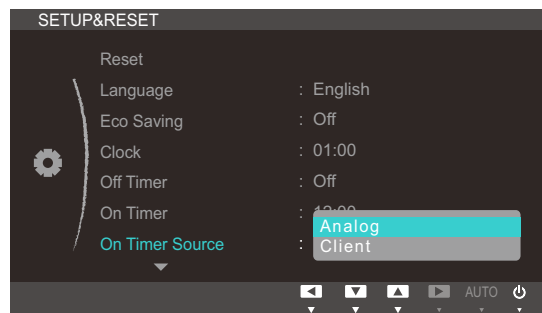
Specify the default input source desired when the product turns on.



On Timer Source is enabled only when the **On Timer** is on.

7.7.1 Configuring On Timer Source

- 1 Press [MENU] on the product.
- 2 Press [▲/▼] to move to **SETUP&RESET** and press [↔/↔] on the product.
- 3 Press [▲/▼] to move to **On Timer Source** and press [↔/↔] on the product.
The following screen will appear.



- 4 Press [▲/▼] to move to the option you want and press [MENU].
- 5 The selected option will be applied.

7.8 On Timer Volume

Specify the volume desired when the product turns on.

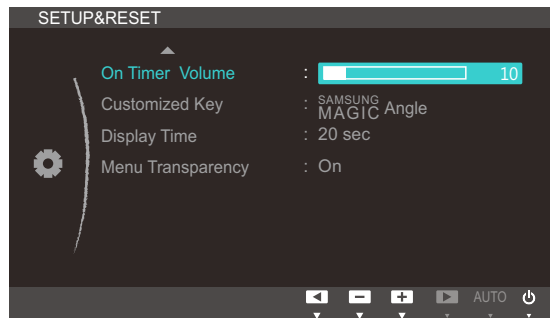


On Timer Volume is enabled only when the **On Timer** is on.

7.8.1 Configuring On Timer Volume

- 1 Press [MENU] on the product.
- 2 Press [▲/▼] to move to **SETUP&RESET** and press [↔] on the product.
- 3 Press [▲/▼] to move to **On Timer Volume** and press [↔] on the product.

The following screen will appear.



- 4 Press [▲/▼] to configure **On Timer Volume**.

7.9 Customized Key

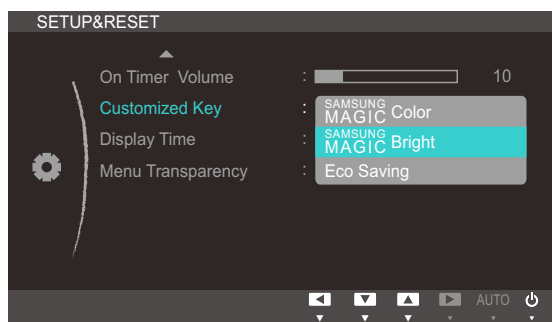
You can customize **Customized Key** as follows.

7.9.1 Configuring Customized Key

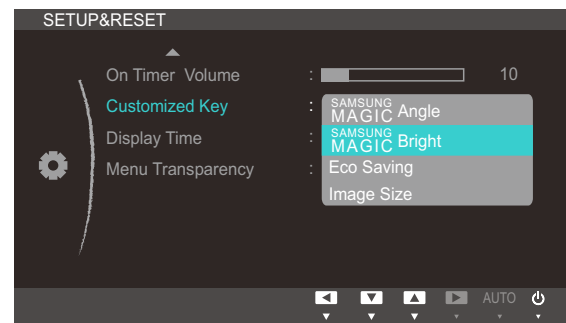
- 1 Press [MENU] on the product.
- 2 Press [▲/▼] to move to **SETUP&RESET** and press [□/□] on the product.
- 3 Press [▲/▼] to move to **Customized Key** and press [□/□] on the product.

The following screen will appear.

TC191W



TC241W



- TC191W
SAMSUNG MAGIC Color - SAMSUNG MAGIC Bright - Eco Saving
- TC241W
SAMSUNG MAGIC Angle - SAMSUNG MAGIC Bright - Eco Saving - Image Size

- 4 Press [▲/▼] to move to the option you want and press [MENU].
- 5 The selected option will be applied.

7.10 Display Time

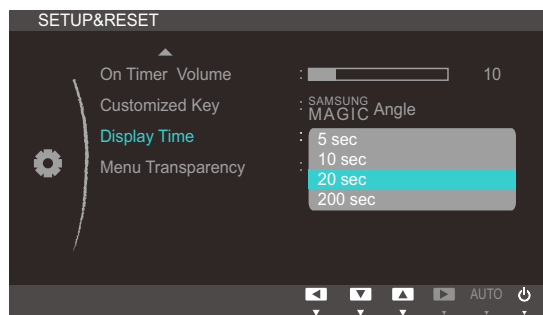
Set the on-screen display (OSD) menu to automatically disappear if the menu is not used for a specified period of time.

Display Time can be used to specify the time after which you want the OSD menu to disappear.

7.10.1 Configuring Display Time

- 1 Press [MENU] on the product.
- 2 Press [▲/▼] to move to **SETUP&RESET** and press [↔] on the product.
- 3 Press [▲/▼] to move to **Display Time** and press [↔] on the product.

The following screen will appear.



- 4 Press [▲/▼] to move to the option you want and press [MENU].
- 5 The selected option will be applied.

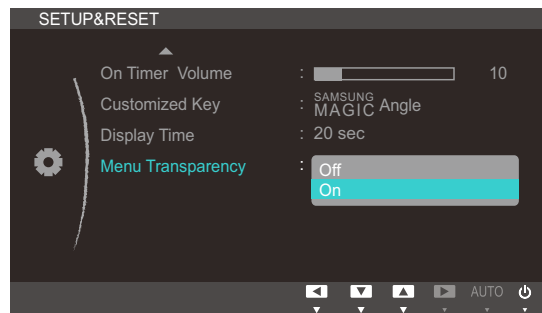
7.11 Menu Transparency

Set the transparency for the menu windows:

7.11.1 Changing Menu Transparency

- 1 Press [MENU] on the product.
- 2 Press [▲/▼] to move to **SETUP&RESET** and press [↩/↪] on the product.
- 3 Press [▲/▼] to move to **Menu Transparency** and press [↩/↪] on the product.

The following screen will appear.



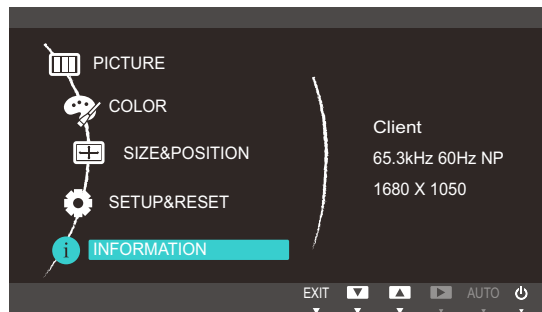
- 4 Press [▲/▼] to move to the option you want and press [MENU].
- 5 The selected option will be applied.

8.1 INFORMATION

View the current input source, frequency and resolution.

8.1.1 Displaying INFORMATION

- 1 Press [MENU] on the product.
- 2 Press [▲/▼] to move to **INFORMATION**.
The current input source, frequency and resolution will appear.

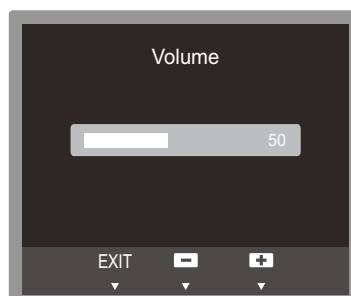


The displayed image may differ depending on the model.

8.2 Configuring Volume in the Initial Screen

Adjust the **Volume** using the [⊙] buttons when the initial screen (that displays no menu screen) is displayed.

- 1 Press any button on the front of the product (when no menu screen is displayed) to display the OSD guide. Next, press [⊙].
The following screen will appear.



- 2 Adjust the **Volume** using the [▲/▼] buttons.

9.1 Natural Color

9.1.1 What is Natural Color?

One of the problems with using a PC is that the colors you see on the screen are different from the colors of printed pictures or source images input through a scanner or digital camera. Natural Color is a color management system developed by Samsung Electronics to resolve this problem. This software works with Samsung products only and enables you to adjust the displayed colors on the screen to match the colors of the printed pictures. For more information, refer to the online help of the software (F1).

The Natural Color is provided online. You can download it from the website below and install;



http://www.samsung.com/us/consumer/learningresources/monitor/naturalcolorexpert/pop_download.html

9.2 MultiScreen



MultiScreen enables users to use the monitor by partitioning multiple sections.

9.2.1 Installing the Software

- 1 Insert the installation CD into the CD-ROM drive.
- 2 Select the "MultiScreen" setup program.
 -  If the pop-up screen for the software installation does not appear on the main screen, find and double-click the "MultiScreen" setup file on the [CD-ROM].
- 3 When the Installation Wizard appears, click **[Next]**.
- 4 Follow the instructions given on the screen to proceed with installation.
 - 
 - The software may not work properly if you do not restart the computer after the installation.
 - The "MultiScreen" icon may not appear depending on the computer system and the product specifications.
 - If the shortcut icon does not appear, press the "F5" key.

Restrictions and Problems with the Installation (MultiScreen)

The "MultiScreen" installation may be affected by the Graphics card, [Motherboard] and the Networking environment.

Operating System

"OS"

- "Windows 2000"
- "Windows XP Home Edition"
- "Windows XP Professional"
- "Windows Vista 32bit"
- "Windows 7 32bit"



For "MultiScreen", the operating systems "Windows 2000" or later is recommended.

"Hardware"

- At least 32MB of memory
- At least 60MB of free space on the hard disk drive

9.2.2 Removing the Software

Click **[Start]**, select **[Settings]/[Control Panel]**, and then double-click **[Add or Remove Programs]**.

Select "MultiScreen" from the program list and click the **[Add/Delete]** button.

9.3 MagicRMS Pro

9.3.1 About MagicRMS Pro

The **MagicRMS Pro** program can be used to remotely control a Samsung network monitor. The design of the user-oriented interface makes it easy and convenient to use.

Using **MagicRMS Pro**, you can schedule a task to be performed at a specified time on a network monitor.

Also, you can manage multiple network monitors efficiently by grouping or filtering them according to specific conditions.

To use the **MagicRMS Pro Solution** or **MagicRMS Pro Agent** and to view the user guide, visit www.samsunglfd.com. Go to **Support>Download Center**, and search for **MagicRMS** to download.

Open source license notice

In the case of using open source software, Open Source licenses are available on the **MagicRMS Pro Agent**.

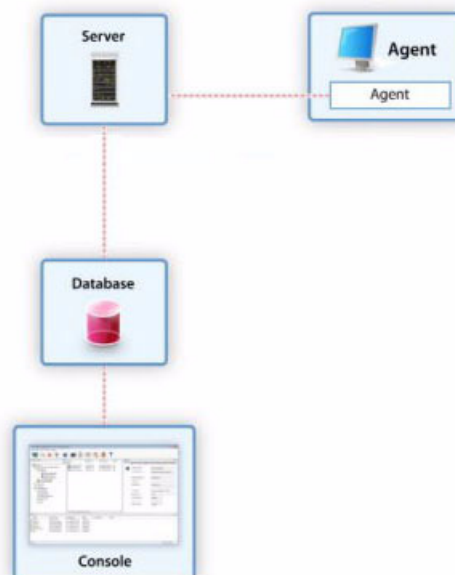
Open Source License Notice is written only English.

9.3.2 Components

MagicRMS Pro consists of **MagicRMS Pro Server**, **MagicRMS Pro Database**, **MagicRMS Pro Console**, and **PXE**. **MagicRMS Pro** manages network monitors by interacting with the **MagicRMS Pro Agent**.



MagicRMS Pro Server, **Database**, and **Console** refer to **Server**, **Database**, and **Console** respectively. **MagicRMS Pro Agent** refers to **Agent**.



9.3.3 MagicRMS Pro Server

MagicRMS Pro Server is a core component of **MagicRMS Pro**. The **Server** connects to **Database** and **Console** and sends a command to perform a task requested by the user to network monitors where the **Agent** is installed.

A task requested from the **Console** is saved in the **Database**. The saved task is forwarded to the **Agent** over the **Server** and performed on the network monitors.

9.3.4 MagicRMS Pro Database

MagicRMS Pro Database keeps information needed to manage network monitors.

9.3.5 MagicRMS Pro Console

Manage network monitors and organize task requests using the **Console**.

9.3.6 PXE

PXE is a standard protocol that allows the **Server** and Client to communicate to enable the Client to boot over a network using **DHCP** and **TFTP**.

Booting the system over a network enables a **Diskless** booting where the system can be operated regardless of the operating system. It also allows the system operating system to be restored or backed up over the network.

9.3.7 MagicRMS Pro Agent

MagicRMS Pro Agent is installed on a network monitor to perform tasks requested from the server and send the network monitor information to the server periodically.



For further details on how to use the **MagicRMS Pro Agent**, see help for **MagicRMS Pro Agent**.

10.1 Requirements Before Contacting Samsung Customer Service Center

10.1.1 Testing the Product



Before calling Samsung Customer Service Center, test your product as follows. If the problem persists, contact Samsung Customer Service Center.

Check if your product is operating normally by using the product test function.

If the screen is turned off and the power indicator blinks even though the product is properly connected to a PC, perform a self-diagnosis test.

- 1 Power off both the PC and product.
- 2 Disconnect the cables from the product.
- 3 Power on the product.
- 4 If the message "**Check Signal Cable**" appears, the product is working normally.



If the screen remains blank, check the PC system, video controller and cable.

10.1.2 Checking the Resolution and Frequency

For a mode that exceeds the supported resolution (refer to "11.3 Standard Signal Mode Table"), the message "**Not Optimum Mode**" will appear for a short time.

10.1.3 Check the following.

Installation issue (PC mode)	
The screen keeps switching on and off.	Check the cable connection between the product and PC, and ensure the connectors are locked. (Refer to "3.2 Connecting and Using a PC")
Screen issue	
The power LED is off. The screen will not switch on.	Check that the power cable is connected properly. (Refer to "3.2 Connecting and Using a PC")
The message " Check Signal Cable " appears.	Check that the cable is properly connected to the product. (Refer to "3.2 Connecting and Using a PC")
	Check that the device connected to the product is powered on.

Screen issue	
"Not Optimum Mode" is displayed.	This message appears if the signal from the graphics card exceeds the maximum resolution or frequency for the product.
	Change the maximum resolution and frequency to suit the product performance, referring to Standard Signal Mode Table (page95).
The images on the screen look distorted.	Check the cable connection to the product (Refer to "3.2 Connecting and Using a PC")
The screen is not clear. The screen is blurry.	Adjust Coarse (page59) and Fine (page60).
	Remove any accessories (video extension cable, etc.) and try again.
	Set the resolution and frequency to the recommended level. (Refer to "11.1 General")
The screen appears unstable and shaky.	Check that the resolution and frequency for the PC are within the range of resolution and frequency compatible with the product. Next, if required, change the settings, referring to Standard Signal Mode Table (page95) in this manual and the INFORMATION menu on the product.
There are shadows or ghost images left on the screen.	
The screen is too bright. The screen is too dark.	Adjust Brightness (page54) and Contrast (page55).
Screen color is inconsistent.	Change the COLOR settings. (Refer to "Configuring Tint")
The colors on the screen have a shadow and are distorted.	Change the COLOR settings. (Refer to "Configuring Tint")
White does not really look white.	Change the COLOR settings. (Refer to "Configuring Tint")
There is no image on the screen and the power LED blinks every 0.5 to 1 second.	The product is operating in power-saving mode.
	Press any key on the keyboard or move the mouse to return to normal operating mode.
Sound issue	
There is no sound.	Check the connection of the audio cable or adjust the volume.
	Check the volume.

Sound issue	
The volume is too low.	Adjust the volume.
	If the volume is still low after turning it up to the maximum level, adjust the volume on your PC sound card or software program.
Source device issue	
A beeping sound is heard when my PC is booting.	If a beeping sound is heard when your PC is booting, have your PC serviced.

10.2 Q & A

Question	Answer
How can I change the frequency?	<p>Set the frequency on your graphics card.</p> <ul style="list-style-type: none">• Windows XP: Go to Control Panel → Appearance and Themes → Display → Settings → Advanced → Monitor, and adjust Refresh rate under Monitor settings.• Windows ME/2000: Go to Control Panel → Display → Settings → Advanced → Monitor, and adjust Refresh rate under Monitor settings.• Windows Vista: Go to Control Panel → Appearance and Personalization → Personalization → Display Settings → Advanced Settings → Monitor, and adjust Refresh rate under Monitor settings.• Windows 7: Go to Control Panel → Appearance and Personalization → Display → Screen Resolution → Advanced settings → Monitor, and adjust Refresh rate under Monitor settings.

Question	Answer
<p>How can I change the resolution?</p>	<ul style="list-style-type: none"> • Windows XP: Go to Control Panel → Appearance and Themes → Display → Settings, and adjust the resolution. • Windows ME/2000: Go to Control Panel → Display → Settings, and adjust the resolution. • Windows Vista: Go to Control Panel → Appearance and Personalization → Personalize → Display Settings, and adjust the resolution. • Windows 7: Go to Control Panel → Appearance and Personalization → Display → Adjust Resolution, and adjust the resolution.
<p>How do I set power-saving mode?</p>	<ul style="list-style-type: none"> • Windows XP: Set power-saving mode in Control Panel → Appearance and Themes → Display → Screen Saver Settings or BIOS SETUP on the PC. • Windows ME/2000: Set power-saving mode in Control Panel → Display → Screen Saver Settings or BIOS SETUP on the PC. • Windows Vista: Set power-saving mode in Control Panel → Appearance and Personalization → Personalize → Screen Saver Settings or BIOS SETUP on the PC. • Windows 7: Set power-saving mode in Control Panel → Appearance and Personalization → Personalize → Screen Saver Settings or BIOS SETUP on the PC.



Refer to the user manual for your PC or graphics card for further instructions on adjustment.

11.1 General

Model Name		TC191W	TC241W
Panel	Size	19 inches (48 cm)	23.6 inches (60 cm)
	Display area	376.32 mm (H) x 301.06 mm (V) / 14.8 inches (H) x 11.9 inches (V)	521.28 mm (H) x 293.22 mm (V) / 20.5 inches (H) x 11.5 inches (V)
Synchronization	Horizontal Frequency	31~80 kHz	
	Vertical Frequency	56~75 Hz	
Display Color		16.7 M	
Resolution	Optimum Resolution	1280 x 1024 @ 60 Hz	1920 x 1080 @ 60 Hz
	Maximum Resolution	1280 x 1024 @ 75 Hz	1920 x 1080 @ 60 Hz
Maximum Pixel Clock		135.00 MHz (Analog/Digital)	148.50 MHz (Analog/Digital)
Server Connector		LAN	
Power Supply		This product supports 100 – 240 V. Since the standard voltage may differ from country to country, please check the label on the back of the product.	
USB		USB 2.0 X 4 (Down stream)	
Video Signal		RGB IN, DVI OUT	
Speaker		1 W X 2 (stereo)	
Dimensions (W x H x D) / Weight	With Stand	(MIN) 407 X 352.9 X 210 mm (16 X 13.8 X 8.2 inches) / 5 kg (11 lbs) (MAX) 407 X 452.9 X 210 mm (16 X 17.8 X 8.2 inches) / 5 kg (11 lbs)	(MIN) 554.6 X 380.3 X 224 mm (21.8 X 14.9 X 8.8 inches) / 6.1 kg (13.4 lbs) (MAX) 554.6 x 510.3 x 224 mm (21.8 X 20 X 8.8 inches) / 6.1 kg (13.4 lbs)
	Without Stand	407.0 x 336.0 x 60.6 mm (16 X 13.2 X 2.3 inches) / 3.6 kg (7.9 lbs)	554.6 x 330.5 x 61.2 mm (21.8 X 13 X 2.4 inches) / 4.5 kg (9.9 lbs)
VESA (V x H)		100 mm X 100 mm / 3.9 inches X 3.9 inches	
Tilt		-3° (± 2°) ~ 25° (± 2°)	

Model Name		TC191W	TC241W
Environmental considerations	Operating	Temperature : 50 ° F ~ 104 ° F (10 ° C ~ 40 ° C) Humidity :10 % ~ 80 %, non-condensing	
	Storage	Temperature : -4 ° F ~ 113 ° F (-20 ° C ~ 45 ° C) Humidity : 5 % ~ 95 %, non-condensing	
Plug-and-Play		This monitor can be installed and used with any Plug-and-Play compatible systems. Two-way data exchange between the monitor and PC system optimizes the monitor settings. Monitor installation takes place automatically. However, you can customize the installation settings if desired.	
Panel Dots (Pixels)		Due to the nature of the manufacturing of this product, approximately 1 pixel per million (1ppm) may appear brighter or darker on the panel. This does not affect product performance.	



The above specifications are subject to change without notice to improve quality.



This device is a Class B digital apparatus.

(USA only)

Dispose unwanted electronics through an approved recycler.

To find the nearest recycling location, go to our website:

www.samsung.com/recyclingdirect or call, (877) 278 - 0799

CALIFORNIA USA ONLY (Applicable for networking models only.)

This Perchlorate warning applies only to primary CR(Manganese Dioxide) Lithium coin cells in the product sold or distributed ONLY in California USA

"Perchloate Material - special handling may apply, See www.dtsc.ca.gov/hazardouswaste/perchlorate."

11.2 PowerSaver


The power-saving function of this product reduces power consumption by switching off the screen and changing the color of the power LED if the product is not used for a specified period of time. The power is not turned off in power-saving mode. To switch the screen back on, press any key on the keyboard or move the mouse. Power-saving mode functions only when the product is connected to a PC that has a power-saving function.

PowerSaver		Normal operation mode		STAND BY (S3)		Power off (S5) (Power button off)	Power off (Mechanical Switch off)
		Typical	Rating	Client	Analog		
Power lamp		On		Off	Blinking	Off	Off
Power Consumption	TC191W	27 W	43 W	Less than 1.8 W		Less than 1.8 W	0 W
	TC241W	32 W	49 W				



- The power consumption level can vary in different operating conditions or when settings are changed.
- To reduce the power consumption to 0 watts, turn off the power switch on the back of the product or disconnect the power cable. Be sure to disconnect the power cable when you will not be using the product for an extended period of time. To reduce the power consumption to 0 watts when the power switch is not available, disconnect the power cable.

11.3 Standard Signal Mode Table

-  This product can be set to only one resolution for each screen size to obtain the optimum picture quality due to the nature of the panel. Therefore, a resolution other than the specified resolution may degrade the picture quality. To avoid this, it is recommended that you select the optimum resolution specified for the screen size of your product.
- Check the frequency when you exchange a CDT monitor (connected to a PC) for an LCD monitor. If the LCD monitor does not support 85Hz, change the vertical frequency to 60Hz using the CDT monitor before you exchange it with the LCD monitor.

If a signal that belongs to the following standard signal modes is transmitted from your PC, the screen will automatically be adjusted. If the signal transmitted from the PC does not belong to the standard signal modes, the screen may be blank even though the power LED turns on. In such a case, change the settings according to the following table by referring to the graphics card user manual.

TC191W

Display Mode	Horizontal Frequency (kHz)	Vertical Frequency (Hz)	Pixel Clock (MHz)	Sync Polarity (H/V)
IBM, 640 x 350	31.469	70.086	25.175	+/-
IBM, 720 x 400	31.469	70.087	28.322	-/+
VESA, 640 x 480	31.469	59.940	25.175	-/-
MAC, 640 x 480	35.000	66.667	30.240	-/-
VESA, 640 x 480	37.861	72.809	31.500	-/-
VESA, 640 x 480	37.500	75.000	31.500	-/-
VESA, 800 x 600	35.156	56.250	36.000	+/+
VESA, 800 x 600	37.879	60.317	40.000	+/+
VESA, 800 x 600	48.077	72.188	50.000	+/+
VESA, 800 x 600	46.875	75.000	49.500	+/+
VESA, 832 x 624	49.726	74.551	57.284	-/-
VESA, 1024 x 768	48.363	60.004	65.000	-/-
VESA, 1024 x 768	56.476	70.069	75.000	-/-
VESA, 1024 x 768	60.023	75.029	78.750	+/+
VESA, 1152 x 864	67.500	75.000	108.000	+/+
MAC, 1152 x 870	68.681	75.062	100.000	-/-
VESA, 1280 x 720	45.000	60.000	74.250	+/+
VESA, 1280 x 800	49.702	59.810	83.500	-/+



Specifications

Display Mode	Horizontal Frequency (kHz)	Vertical Frequency (Hz)	Pixel Clock (MHz)	Sync Polarity (H/V)
VESA, 1280 x 960	60.000	60.000	108.000	+/+
VESA, 1280 x 1024	63.981	60.020	108.000	+/+
VESA, 1280 x 1024	79.976	75.025	135.000	+/+

TC241W

Display Mode	Horizontal Frequency (kHz)	Vertical Frequency (Hz)	Pixel Clock (MHz)	Sync Polarity (H/V)
IBM, 640 x 350	31.469	70.086	25.175	+/-
IBM, 720 x 400	31.469	70.087	28.322	-/+
VESA, 640 x 480	31.469	59.940	25.175	-/-
MAC, 640 x 480	35.000	66.667	30.240	-/-
VESA, 640 x 480	37.861	72.809	31.500	-/-
VESA, 640 x 480	37.500	75.000	31.500	-/-
VESA, 800 x 600	35.156	56.250	36.000	+/+
VESA, 800 x 600	37.879	60.317	40.000	+/+
VESA, 800 x 600	48.077	72.188	50.000	+/+
VESA, 800 x 600	46.875	75.000	49.500	+/+
MAC, 832 x 624	49.726	74.551	57.284	-/-
VESA, 1024 x 768	48.363	60.004	65.000	-/-
VESA, 1024 x 768	56.476	70.069	75.000	-/-
VESA, 1024 x 768	60.023	75.029	78.750	+/+
VESA, 1152 x 864	67.500	75.000	108.000	+/+
MAC, 1152 x 870	68.681	75.062	100.000	-/-
VESA, 1280 x 720	45.000	60.000	74.250	+/+
VESA, 1280 x 800	49.702	59.810	83.500	-/+
VESA, 1280 x 1024	63.981	60.020	108.000	+/+
VESA, 1280 x 1024	79.976	75.025	135.000	+/+
VESA, 1440 x 900	55.935	59.887	106.500	-/+
VESA, 1600 x 900 RB	60.000	60.000	108.000	+/+
VESA, 1680 x 1050	65.290	59.954	146.250	-/+
VESA, 1920 x 1080	67.500	60.000	148.500	+/+



- Horizontal Frequency

The time required to scan a single line from the left to the right side of the screen is called a horizontal cycle. The reciprocal number of a horizontal cycle is called horizontal frequency. Horizontal frequency is measured in kHz.

- Vertical Frequency

Repeating the same picture dozens of times per second allows you to view natural pictures. The repeat frequency is called "vertical frequency" or "refresh rate" and is indicated in Hz.

Contact SAMSUNG WORLD WIDE



If you have any questions or comments relating to Samsung products, please contact the SAMSUNG customer care center.

NORTH AMERICA		
U.S.A	1-800-SAMSUNG (726-7864)	http://www.samsung.com
CANADA	1-800-SAMSUNG (726-7864)	http://www.samsung.com/ca (English) http://www.samsung.com/ca_fr (French)
MEXICO	01-800-SAMSUNG (726-7864)	http://www.samsung.com
LATIN AMERICA		
ARGENTINE	0800-333-3733	http://www.samsung.com
BOLIVIA	800-10-7260	http://www.samsung.com
BRAZIL	0800-124-421 4004-0000	http://www.samsung.com
CHILE	800-SAMSUNG (726-7864) From mobile 02-482 82 00	http://www.samsung.com
COLOMBIA	01-8000112112	http://www.samsung.com
COSTA RICA	0-800-507-7267	http://www.samsung.com/latin (Spanish) http://www.samsung.com/latin_en (English)
DOMINICA	1-800-751-2676	http://www.samsung.com/latin (Spanish) http://www.samsung.com/latin_en (English)
ECUADOR	1-800-10-7267	http://www.samsung.com/latin (Spanish) http://www.samsung.com/latin_en (English)
EL SALVADOR	800-6225	http://www.samsung.com/latin (Spanish) http://www.samsung.com/latin_en (English)

LATIN AMERICA		
GUATEMALA	1-800-299-0013	http://www.samsung.com/latin (Spanish) http://www.samsung.com/latin_en (English)
HONDURAS	800-27919267	http://www.samsung.com/latin (Spanish) http://www.samsung.com/latin_en (English)
JAMAICA	1-800-234-7267	http://www.samsung.com
NICARAGUA	00-1800-5077267	http://www.samsung.com/latin (Spanish) http://www.samsung.com/latin_en (English)
PANAMA	800-7267	http://www.samsung.com/latin (Spanish) http://www.samsung.com/latin_en (English)
PERU	0-800-777-08	http://www.samsung.com
PUERTO RICO	1-800-682-3180	http://www.samsung.com
TRINIDAD & TOBAGO	1-800-SAMSUNG (726-7864)	http://www.samsung.com
VENEZUELA	0-800-100-5303	http://www.samsung.com

EUROPE		
AUSTRIA	0810 - SAMSUNG (7267864, € 0.07/min)	http://www.samsung.com
BELGIUM	02-201-24-18	http://www.samsung.com/be (Dutch) http://www.samsung.com/be_fr (French)
BOSNIA	05 133 1999	http://www.samsung.com
BULGARIA	07001 33 11 , normal tariff	http://www.samsung.com
CROATIA	062 SAMSUNG (062 726 7864)	http://www.samsung.com
CYPRUS	8009 4000 only from landline (+30) 210 6897691 from mobile and land line	http://www.samsung.com

Appendix

EUROPE		
CZECH	800 - SAMSUNG (800-726786)	http://www.samsung.com
	Samsung Electronics Czech and Slovak, s.r.o., Oasis Florenc, Sokolovská 394/17, 180 00, Praha 8	
DENMARK	70 70 19 70	http://www.samsung.com
EIRE	0818 717100	http://www.samsung.com
ESTONIA	800-7267	http://www.samsung.com
FINLAND	09 85635050	http://www.samsung.com
FRANCE	01 48 63 00 00	http://www.samsung.com
GERMANY	0180 5 SAMSUNG bzw. 0180 5 7267864* (*0,14 €/Min. aus dem dt. Festnetz, aus dem Mobilfunk max. 0,42 €/Min.)	http://www.samsung.com
GREECE	80111-SAMSUNG (80111 726 7864) only from land line (+30) 210 6897691 from mobile and land line	http://www.samsung.com
HUNGARY	06-80-SAMSUNG (726-7864)	http://www.samsung.com
ITALIA	800-SAMSUNG (726-7864)	http://www.samsung.com
LATVIA	8000-7267	http://www.samsung.com
LITHUANIA	8-800-77777	http://www.samsung.com
LUXEMBURG	261 03 710	http://www.samsung.com
MACEDONIA	023 207 777	http://www.samsung.com
MONTENEGRO	020 405 888	http://www.samsung.com
NETHERLANDS	0900 - SAMSUNG (0900-7267864) (€ 0,10/Min)	http://www.samsung.com
NORWAY	815 56480	http://www.samsung.com
POLAND	0 801-1SAMSUNG (172-678) +48 22 607-93-33	http://www.samsung.com
PORTUGAL	808 20 - SAMSUNG (808 20 7267)	http://www.samsung.com
RUMANIA	08008 SAMSUNG (08008 726 7864) TOLL FREE No.	http://www.samsung.com
SERBIA	0700 SAMSUNG (0700 726 7864)	http://www.samsung.com
SLOVAKIA	0800 - SAMSUNG (0800-726 786)	http://www.samsung.com
SPAIN	902 - 1 - SAMSUNG (902 172 678)	http://www.samsung.com

Appendix

EUROPE		
SWEDEN	0771 726 7864 (SAMSUNG)	http://www.samsung.com
SWITZERLAND	0848-SAMSUNG (7267864, CHF 0.08/min)	http://www.samsung.com/ch (German) http://www.samsung.com/ch_fr (French)
U.K	0330 SAMSUNG (7267864)	http://www.samsung.com

CIS		
ARMENIA	0-800-05-555	http://www.samsung.com
AZERBAIJAN	088-55-55-555	http://www.samsung.com
BELARUS	810-800-500-55-500	http://www.samsung.com
GEORGIA	0-800-555-555	http://www.samsung.com
KAZAKHSTAN	8-10-800-500-55-500 (GSM: 7799)	http://www.samsung.com
KYRGYZSTAN	00-800-500-55-500	http://www.samsung.com
MOLDOVA	0-800-614-40	http://www.samsung.com
MONGOLIA	+7-800-555-55-55	http://www.samsung.com
RUSSIA	8-800-555-55-55	http://www.samsung.com
TADJIKISTAN	8-10-800-500-55-500	http://www.samsung.com
UKRAINE	0-800-502-000	http://www.samsung.com/ua (Ukrainian) http://www.samsung.com/ua_ru (Russian)
UZBEKISTAN	8-10-800-500-55-500	http://www.samsung.com

ASIA PACIFIC		
AUSTRALIA	1300 362 603	http://www.samsung.com
CHINA	400-810-5858	http://www.samsung.com
HONG KONG	(852) 3698 - 4698	http://www.samsung.com/hk (Chinese) http://www.samsung.com/hk_en (English)

Appendix

ASIA PACIFIC		
INDIA	1800 1100 11 3030 8282 1800 3000 8282 1800 266 8282	http://www.samsung.com
INDONESIA	0800-112-8888 021-5699-7777	http://www.samsung.com
JAPAN	0120-327-527	http://www.samsung.com
MALAYSIA	1800-88-9999	http://www.samsung.com
NEW ZEALAND	0800 SAMSUNG (0800 726 786)	http://www.samsung.com
PHILIPPINES	1-800-10-SAMSUNG (726-7864) for PLDT 1-800-3-SAMSUNG (726-7864) for Digitel 1-800-8-SAMSUNG (726-7864) for Globe 02-5805777	http://www.samsung.com
SINGAPORE	1800-SAMSUNG (726-7864)	http://www.samsung.com
TAIWAN	0800-329-999 0266-026-066	http://www.samsung.com
THAILAND	1800-29-3232 02-689-3232	http://www.samsung.com
VIETNAM	1 800 588 889	http://www.samsung.com

MIDDIE EAST		
BAHRAIN	8000-4726	http://www.samsung.com/ae (English) http://www.samsung.com/ae_ar (Arabic)
EGYPT	08000-726786	http://www.samsung.com
IRAN	021-8255	http://www.samsung.com
JORDAN	800-22273 065777444	http://www.samsung.com
KUWAIT	183-2255	http://www.samsung.com/ae (English) http://www.samsung.com/ae_ar (Arabic)

MIDDLE EAST		
MOROCCO	080 100 2255	http://www.samsung.com
OMAN	800-SAMSUNG (726-7864)	http://www.samsung.com/ae (English) http://www.samsung.com/ae_ar (Arabic)
SAUDI ARABIA	9200-21230	http://www.samsung.com/ae (English) http://www.samsung.com/ae_ar (Arabic)
TURKEY	444 77 11	http://www.samsung.com
U.A.E	800-SAMSUNG (726-7864)	http://www.samsung.com

AFRICA		
ANGOLA	91-726-7864	http://www.samsung.com
BOTSWANA	0800-726-000	http://www.samsung.com
CAMEROON	7095- 0077	http://www.samsung.com
COTE D' IVOIRE	8000 0077	http://www.samsung.com
GHANA	0800-10077 0302-200077	http://www.samsung.com
KENYA	0800 724 000	http://www.samsung.com
NAMIBIA	8197267864	http://www.samsung.com
NIGERIA	0800-726-7864	http://www.samsung.com
SENEGAL	800-00-0077	http://www.samsung.com
SOUTH AFRICA	0860-SAMSUNG (726-7864)	http://www.samsung.com
TANZANIA	0685 88 99 00	http://www.samsung.com
UGANDA	0800 300 300	http://www.samsung.com
ZAMBIA	211350370	http://www.samsung.com

Responsibility for the Pay Service (Cost to Customers)



When the service is requested, in spite of in warranty, we may charge you for a visit from a service technician in the following cases.

Not a product defect

Cleaning of the product, Adjustment, Explanation, Re-installation and etc.

- If a service technician gives instructions on how to use TV or simply adjusts options without disassembling product.
- If a defect is caused by external environmental factors (Internet, Antenna, Wired Signal, etc.).
- If a product is reinstalled or devices are connected additionally after installing the purchased product for the first time.
- If a product is reinstalled to move to a different spot or to move to a different house.
- If customer requests instructions on how to use because of another company's product.
- If customer requests instructions on how to use the network or another company's program.
- If customer requests software installation and setup for the product.
- If a service technician removes/cleans dusts or foreign materials inside of the product.
- If customer requests an installation additionally after purchasing a product through home-shopping or online.

A Product damage caused by customer's fault

Product damage caused by customer's mishandling or wrong repair.

If a product damage is caused by;

- external impact or drop.
- use of supplies or separately sold product unspecified by Samsung.
- repair from a person besides an engineer of outsourcing service company or partner of Samsung Electronics Co., Ltd.
- remodeling or repairing the product by customer.
- using it with incorrect voltage or non-authorized electrical connections.
- not following the "cautions" in User Manual.

Others

- If product fails by natural disaster (lightning, fire, earthquake, flood damage, etc).
- If consumable components are all used up (Battery, Toner, Fluorescent lights, Head, Vibrator, Lamp, Filter, Ribbon, etc.).



If customer requests a service in case the product has no defect, service fee may be charged. So please read User Manual first.

Correct Disposal of This Product (Waste Electrical & Electronic Equipment)



(Applicable in countries with separate collection systems)

This marking on the product, accessories or literature indicates that the product and its electronic accessories (e.g. charger, headset, USB cable) should not be disposed of with other household waste at the end of their working life. To prevent possible harm to the environment or human health from uncontrolled waste disposal, please separate these items from other types of waste and recycle them responsibly to promote the sustainable reuse of material resources.

Household users should contact either the retailer where they purchased this product, or their local government office, for details of where and how they can take these items for environmentally safe recycling.

Business users should contact their supplier and check the terms and conditions of the purchase contract. This product and its electronic accessories should not be mixed with other commercial wastes for disposal.

Correct disposal of batteries in this product



(Applicable in countries with separate collection systems)

This marking on the battery, manual or packaging indicates that the batteries in this product should not be disposed of with other household waste at the end of their working life. Where marked, the chemical symbols Hg, Cd or Pb indicate that the battery contains mercury, cadmium or lead above the reference levels in EC Directive 2006/66. If batteries are not properly disposed of, these substances can cause harm to human health or the environment.

To protect natural resources and to promote material reuse, please separate batteries from other types of waste and recycle them through your local, free battery return system.

Terminology

OSD(On Screen Display)

On screen display (OSD) allows you to configure on-screen settings to optimize the picture quality as required. It allows you to change the screen brightness, tint, size and many other settings using menus displayed on the screen.

Coarse

Coarse refers to the frequency of radio wave vibrations per second. A higher frequency transmits a larger amount of data and is reflected easier. A lower frequency traverses obstacles more easily and can travel farther, but it transmits a smaller amount of data. The Coarse menu allows you to manually adjust the frequency to obtain the optimum picture quality. Adjust Coarse referring to Standard Signal Mode Table (95page) according to the performance of your product and enjoy improved picture quality.

Gamma

The Gamma menu adjusts the grey scale that represents middle tones on the screen. Adjusting the brightness brightens the whole screen, but adjusting Gamma only brightens the medium brightness.

Grey scale

Scale refers to levels of color intensity that show variations of color change from darker areas to brighter areas on the screen. Changes to the screen brightness are expressed with black and white variation, and grey scale refers to the medium area between black and white. Changing the grey scale through Gamma adjustment will change the medium brightness on the screen.

Scanning rate

Scanning rate, or refresh rate, refers to the frequency of screen refreshes. Screen data is transmitted as it refreshes to display an image, although the refreshing is invisible to the naked eye. The number of screen refreshes is called scanning rate and is measured in Hz. A scanning rate of 60Hz means that the screen refreshes 60 times per second. The screen scanning rate depends on the performance of the graphics cards in your PC and monitor.

Horizontal Frequency

Characters or images displayed on the monitor screen consist of numerous dots (pixels). Pixels are transmitted in horizontal lines, which are then arranged vertically to create an image. The horizontal frequency is measured in kHz and represents how many times horizontal lines per second are transmitted and displayed on the monitor screen. A horizontal frequency of 85 means that the horizontal lines that make up an image are transmitted 85 000 times per second, and the horizontal frequency is indicated in 85kHz.

Vertical Frequency

One image is made of numerous horizontal lines. The vertical frequency is measured in Hz and represents how many images can be created per second by those horizontal lines. A vertical frequency of 60 means that an image is transmitted 60 times per second. The vertical frequency is also called "refresh rate" and affects screen flicker.

Resolution

Resolution is the number of horizontal pixels and vertical pixels that form a screen. It represents the level of display detail.

A higher resolution displays a greater amount of information on the screen and is suitable for performing multiple tasks at the same time.

E.g. A resolution of 1920 x 1080 consists of 1,920 horizontal pixels (horizontal frequency) and 1,080 vertical lines (vertical resolution).

Plug & Play

The Plug & Play feature allows the automatic exchange of information between a monitor and PC to produce an optimum display environment.

The monitor uses VESA DDC (international standard) to execute Plug & Play.

Index

B

- Before Connecting 45
- Blue 64
- Brightness 54

C

- Checking the Contents 19
- Cleaning 9
- Clock 73
- Coarse 59
- Color Tone 65
- Configuring Volume in the Initial Screen 81
- Connecting and Using a PC 46
- Connection to Use "Windows Embedded Standard 7" 33
- Contact SAMSUNG WORLDWIDE 98
- Contrast 55
- Copyright 7
- Correct posture to use the product 18
- Customized Key 78

D

- Display Time 79

E

- Eco Saving 72

F

- Fine 60

G

- Gamma 66
- General 92
- Green 63

I

- Image Size (TC241W model only) 68
- INFORMATION 81
- Installation 26

L

- Languagey 71

M

- Menu Transparency 80
- MultiScreen 83

N

- Natural Color 82

O

- Off Timer 74
- On Timer 75
- On Timer Source 76
- On Timer Volume 77

P

- Parts 22
- PowerSaver 94

Q

- Q & A 90

R

- Red 62
- Requirements Before Contacting Samsung Customer Service Center 87
- Reset 70
- Responsibility for the Pay Service (Cost to Customers) 104

Index

S

- Safety Precautions 11
- SAMSUNG MAGIC Angle 58
- SAMSUNG MAGIC Bright 57
- SAMSUNG MAGIC Color 61
- Sharpness 56
- Standard Signal Mode Table 95

T

- Terminology 106

U

- Using "Windows Embedded Standard 7" 34

W

- What is "Windows Embedded Standard 7" Client? 31