

# 4K All-One Camera

The NEW 4K All-One Camera from ScienScope is THE advanced all-in-one inspection solution. All you need to inspect or convert any optical microscope system into a powerful digital inspection tool. The 4K All-One(AO) includes internal software-controlled optics, integrated image processing and capture software, measuring tools with an onscreen magnification display, integrated LED lighting, and a mounting adapter.

Experience full 4K image quality with no image delay. The perfect solution for those wishing to digitize and simplify their inspection process. Measure anything using the onboard field-of-view measuringtools, DXF overlay, or multi-line generator. Export your measurement data and images with measured objects!

Ergonomically designed, allowing for less operator fatigue and improved production efficiency. Simple, fast, high-quality inspection. Ideal for repair, rework, assembly, and quality control in any manufacturing industry.



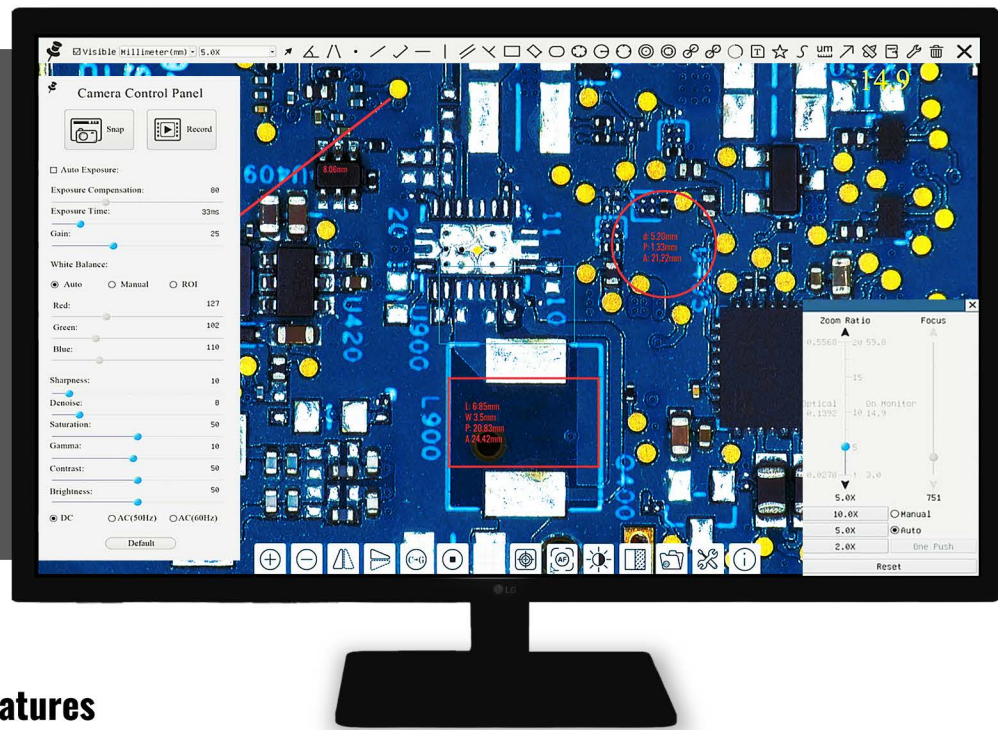
**MAC-PK5D-A1-4K system is shown.  
More systems are available!**

## Feature Highlights

- Optics include five groups of 16 elements with a 20X zoom ratio. Up to 90x optics magnification
- Motorized Zoom
- Auto and Manual Focus
- 76mm diameter adapter bracket and 1/4" 20 mounting thread for mounting
- SD card/USB flash drive for captured image and video storage, support local preview and playback
- 4K HDMI/USB/ETH/WiFi multiple video output

## Integrated Software Features

- Live measurement & annotation
- Capture media to SD card/USB
- Split-screen image comparison
- Media gallery / Visual Review
- Export measurement data
- Wireless mouse control



## 4K All-One Camera Overview and Features

- Optics include 5 groups of 16 elements with a 20X zoom ratio. Up to 90x optics magnification
- Motorized Zoom
- Auto and manual focus
- 192mm standard working distance with 150-195mm depth of field
- Field of view 200mm x 112.5mm at low magnification. Field of view 10mm x 5.6mm at high magnification.
- Removable/Integrated LED ring light
- 76mm diameter adapter bracket and 1/4" 20 mounting thread for mounting
- Sony 1/2.8" 4K Starvis CMOS
- 4K/1080P @30FPS auto switching according to monitor resolution
- SD card/USB flash drive for captured image and video storage, support local preview and playback
- 4K HDMI/USB/ETH/WiFi multiple video outputs
- Embedded mouse control panel, Measurement Toolbar, Comprehensive Control Toolbar, Auto-focus, and zoom control panel
- Onscreen magnification display

### LED Light



| Camera Specifications  | Optical Specification   | Light Specification  |
|--|---|--|
| <ul style="list-style-type: none"> <li>• Sensor &amp; Size(mm): Sony IMX415LQR-C</li> <li>• Pixel(□m): 1.45x1.45</li> <li>• G Sensitivity Dark Signal: 300mv/0.13 with 1/30s</li> <li>• FPS/Resolution: 30@3840*2160(HDMI)</li> <li>• Binning: 1x1</li> <li>• Exposure: 0.04ms~1000ms</li> </ul> | <ul style="list-style-type: none"> <li>• Working Distance(mm): 156-195</li> <li>• Zoom Range: 0.028X to 0.56X</li> <li>• MTF(lp/mm): 160</li> <li>• Distortion: 0.5%</li> <li>• FOV@1.0X(mm): 200 x 112.5</li> <li>• FOV@20X(mm): 10 x 5.6</li> </ul> | <ul style="list-style-type: none"> <li>• LED: 8 CREE XP-E2 @ 137 Lumen each</li> <li>• Color: White</li> <li>• Power: 3V/3A</li> <li>• Inner Dia.(mm): 50</li> <li>• Out Dia.(mm): 76</li> </ul> |