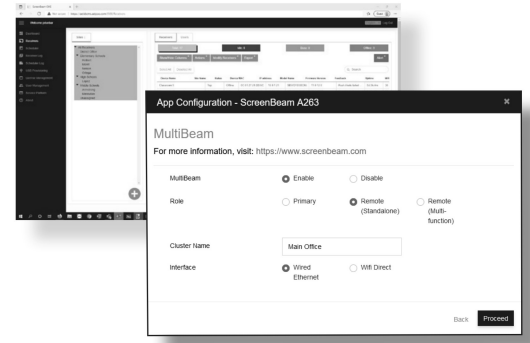
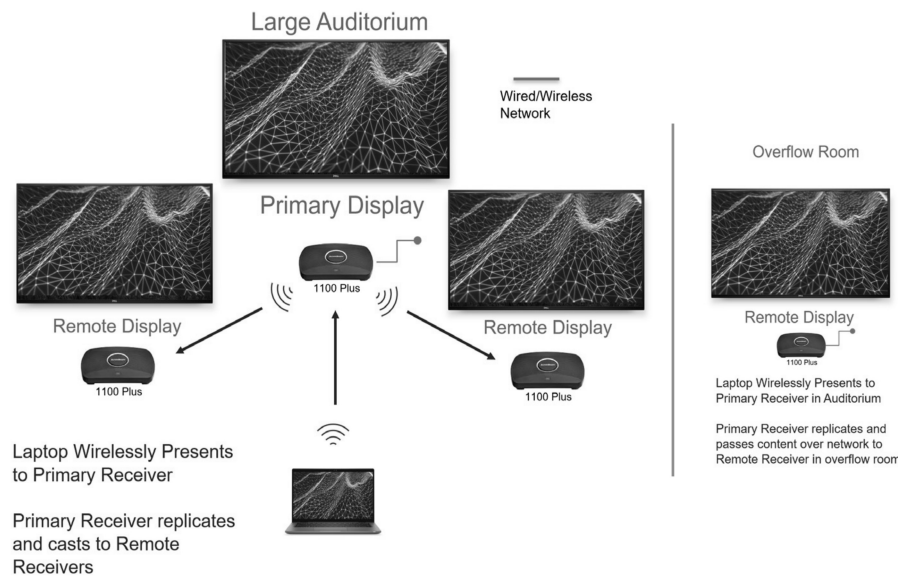


ScreenBeam MultiBeam

Best-In-Class Display Mirroring for Auditoriums, Lecture Halls, and Rooms with Multiple Displays

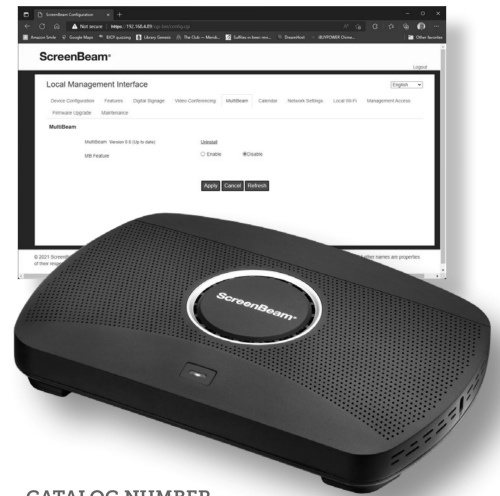
ScreenBeam MultiBeam enables high-quality, wired or wireless content mirroring with ScreenBeam 1100 Plus enabled displays. With the addition of more displays, closer to your audience, MultiBeam facilitates higher impact visual communication and special needs requirements, simply, reducing demands on IT and A/V staff.

Built around our Award-Winning Wireless Display technology, ScreenBeam MultiBeam automates content mirroring. In the Cluster, the Primary Display repeats content (wireless presentation or HDMI video) to the Remote Displays. These Remote Displays can be anywhere in the facility, increasing the potential footprint of Auditoriums, Lecture Halls, and Multi-Use Facilities. Anywhere a 1100 Plus can connect, a Remote Display can be enabled, up to 8 devices per Cluster!



Central Management System Enterprise software (CMS-E), monitors and manages ScreenBeam receivers and simplifies setup of MultiBeam Clusters. CMS-E is free with ScreenBeam 1100 Plus Receivers.

[Learn More](#)



CATALOG NUMBER

SBWD1100P

ScreenBeam 1100 Plus Wireless Display Receiver with Local Management Interface and ScreenBeam CMS-E

SCREENBEAM MULTIBEAM KEY ADVANTAGES

Wireless presentation is no longer limited to a primary screen, and can now extend to additional displays automatically. Remote displays can be dedicated to the Cluster or assigned to MultiFunction, allowing for breakout and small group presentation.



Closer Visual Presentations

Nearby readable screens are far more impactful for visual communication.



Location Agnostic

MultiBeam Clusters can connect groups of in-room and out-of-room displays.



MultiFunction Option

1100 Plus Receivers can be set to dedicated Cluster use or MultiFunction, increasing usability.



Administrator Control

Administrators completely control access to 1100 Plus devices, including access to any clustered device.

Free upgrade available to all CMS-E users with ScreenBeam 1100 Plus devices