



# RevealPRO User Manual



Welcome to RevealPRO. Let's take a few minutes to quickly walk through the basics and learn how to use your device.

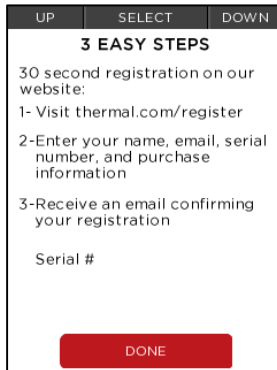
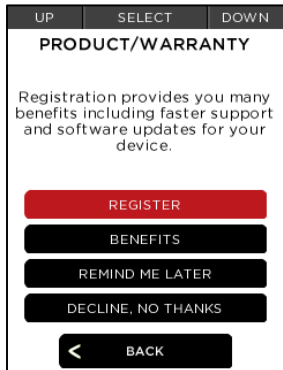
## Benefits of Registration:

By sharing your name, email, and serial number, you enable us to send you product updates and tips and techniques. We can also expedite your warranty inquiries by knowing when and where you purchased. Country information helps us to provide better local product support.

To read our data policy visit:

[www.thermal.com/datapolicy](http://www.thermal.com/datapolicy)

## Registration



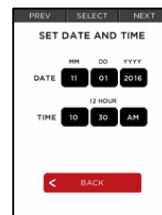
Visit [thermal.com/register](http://thermal.com/register) to register your product to activate full warranty and service options.

## Changing your Registration:

Go to [thermal.com](http://thermal.com) and login to make changes to your user account.

### Set Date and Time:

Set date, time and language on first startup.



## Navigation

Use buttons to navigate through menus.



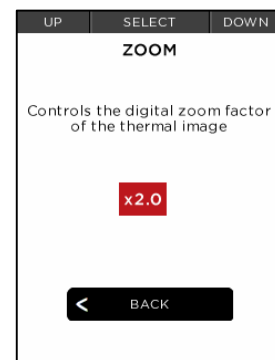
Turn on the 300 Lumen LED flashlight.



The left two buttons have a quick navigation dropdown when selected.

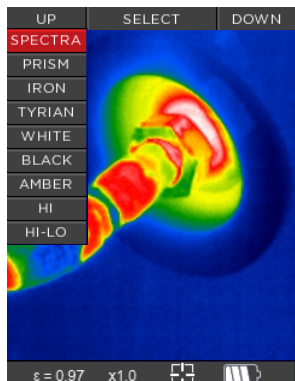


## Zoom



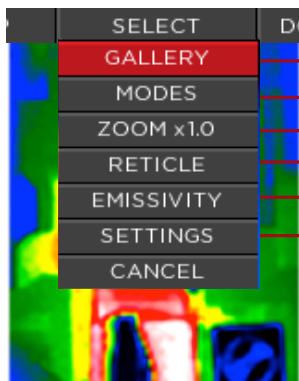
While imaging, press and hold the left button to continuously zoom up to 4X. You can also set the zoom factor manually in settings.

## Filters



Explore the various filters- from standard grayscale to spectra high contrast.

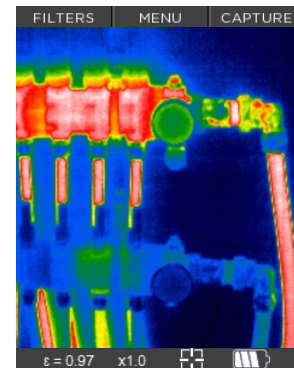
## Menu



- View captured images.
- Change the thermal imaging mode.
- Zoom in up to 4x.
- Toggle reticle on or off.
- Adjust emissivity.
- Access more settings and features.

Quickly access common settings from the dropdown menu.

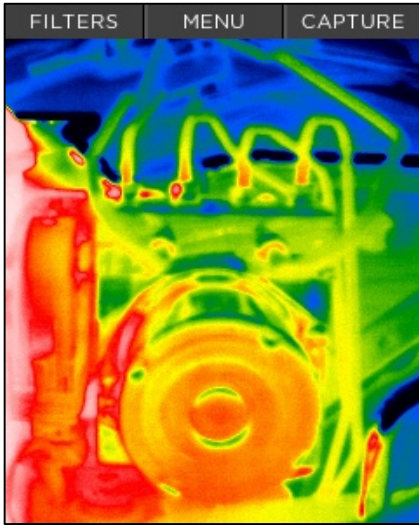
## Capture



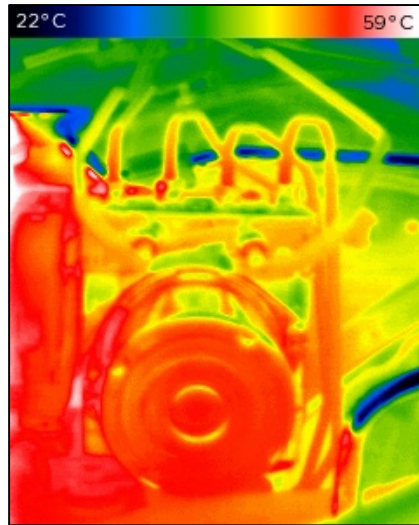
Press the **Up** button to capture images. Hold to capture multiple images.

# Modes

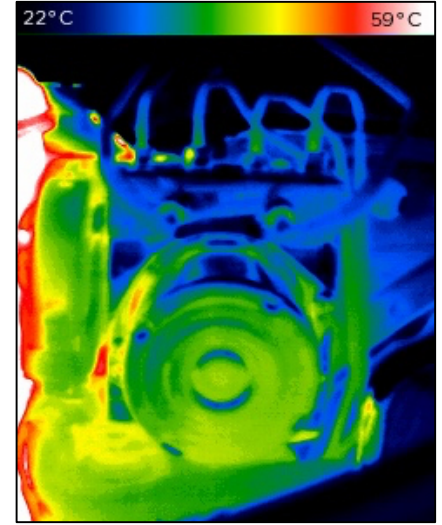
Optional, more advanced modes, that display all temperature data for maximum clarity.



Default mode that maximizes thermal image consistency using auto exposure control.

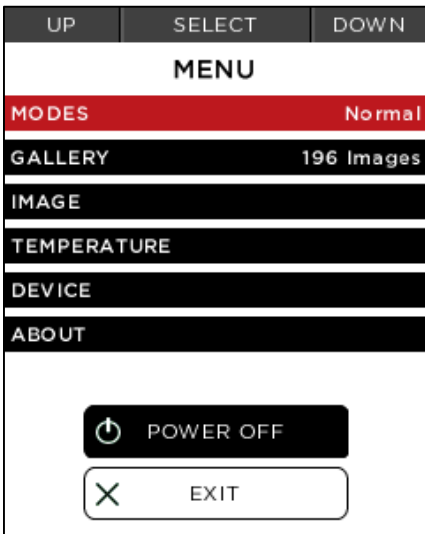


Displays all temperature data for maximum clarity.



Allows you to set and lock a temperature range to display the maximum thermal information of any object or scene.

## Settings



- Change the thermal imaging mode.
- View captured images.
- Control zoom, watermark and banner settings.
- Adjust units (°C, °F, K), emissivity and reticle.
- Set date and time, language, auto power off, and flashlight settings.
- Access device serial#, firmware version and registration information.

To fully reset back to factory settings, choose **Device** then **Restore**.

## Thermal Span and Level

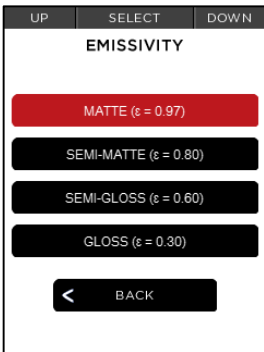
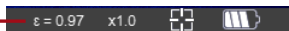
Individually adjust Span and Level range to meet your requirements. Choose reset to return to the default range.



## Emissivity Control

Emissivity is a material property that defines how much IR light is emitted from a particular surface. Calibrate for emissivity through four pre-defined settings to ensure accurate temperature readings and reporting.

Current emissivity ( $\epsilon$ ) setting is visible in the lower banner.



## Reticle

Enable the reticle for precise spot temperature readings.



-40 to 626°F (-40 to 330°C)  
Detection Range

