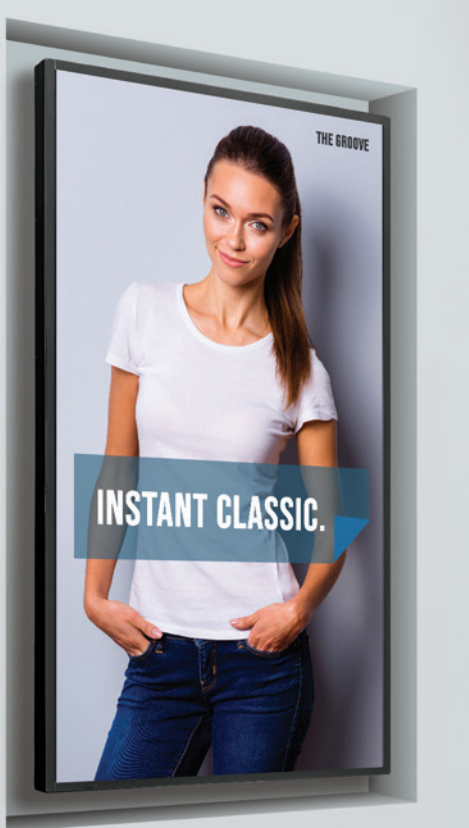
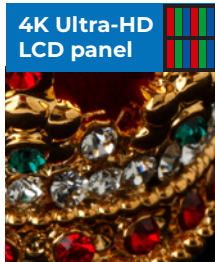
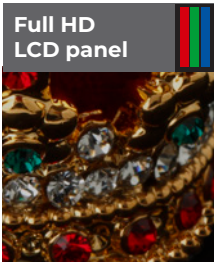


High Definition, High Brightness and Flexible Installation for 24/7 Operation



Bright 700 cd/m2 image is clear even in brightly lit areas

4 times the pixel resolution of Full-HD, showing lifelike images with incredible realism.



Built-in media player provides 4K signage without a separate PC

By utilizing a commercially available USB drive, 4K still images or videos can easily be displayed without the need of a PC.

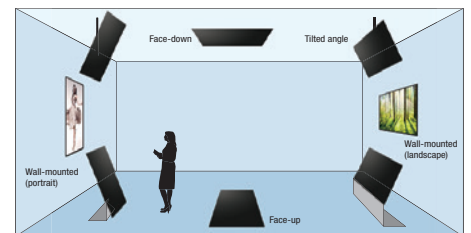
USB Memory Slot



Attach the included cover to prevent theft of a USB memory drive.

Flexible installation

PN-HS series supports Landscape/Portrait/Face-up/Face-down/Tilt-forward/Tilt-backward installation.



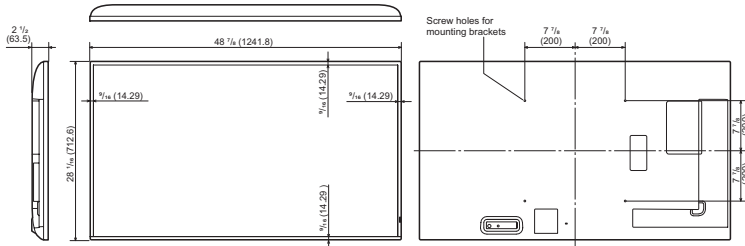
Specifications

Model Name	PN-HS551	PN-HS501	PN-HS431
Installation	Landscape / Portrait / Face-up / Face-down / Tilt-forward / Tilt-backward		
LCD Panel	55" class (54 5/8" diagonal) TFT LCD	50" class (49 1/2" diagonal) TFT LCD	43" class (42 1/2" diagonal) TFT LCD
Backlight	LED, full array		
Max. Resolution	3,840 × 2,160 pixels		
Max. Display Colors (approx.)	1,070 million colors		
Pixel Pitch (HxV)	0.315 × 0.315 mm	0.2854 × 0.2854 mm	0.2451 × 0.2451 mm
Max Brightness *1	700 cd/m ²		
Contrast Ratio	5,000 : 1	4,000 : 1	1,200 : 1
Viewing Angle(H/V)	178°/178° (CR ≥10)		
Active Screen Area(W×H)	47 5/8" × 26 13/16"	43 1/8" × 24 1/4"	37 1/16" × 20 13/16"
Response Time	8ms (grey to grey, avg.)		
Video	Analog RGB (0.7 Vp-p) [75Ω]		
Synchronization	Horizontal/vertical separation (TTL: positive/negative)		
Plug & Play	VESA DDC2B		
Video	Mini D-sub 15-pin × 1, HDMI × 3		
Audio	3.5mm mini stereo jack x 1		
Serial (RS-232C)	D-sub 9 pin x 1		
Video	-		
Audio	RCA pin (L/R) x 1		
Serial (RS-232C)	D-sub 9 pin x 1		
USB Port	USB port (2.0-compliant) × 1		
LAN Terminal	10Base-T/100Base-TX		
Speakers Output	10W + 10W		
Power Requirement	AC 100 - 240 V, 50/60 Hz		
Mounting	4 points, 400 × 400 mm pitch, M6 screw		4 points, 200 × 200 mm pitch, M6 screw
Operating Temperature *3	32°F to 104°F (0°C to 40°C)		
Operating Humidity	20% to 80% (no condensation)		
Power Consumption (Input signal waiting state/standby mode*4)	190 W (1W / 0.5W)	150 W (1W / 0.5W)	140 W (1W / 0.5W)
Dimensions (approx.)	48 7/8" × 2 1/2" × 28 1/16"	44 7/16" × 2 1/2" × 25 9/16"	38 5/16" × 2 1/2" × 22 1/8"
Weight (approx.)	39.7 lbs	33.1 lbs	25.4 lbs

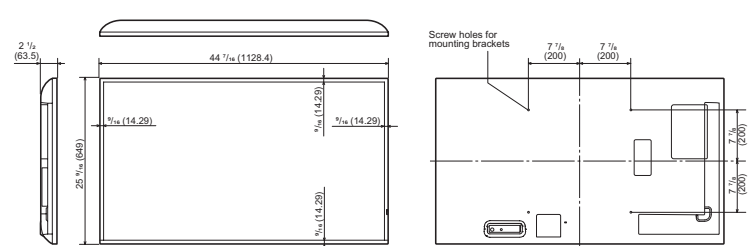
*1 Brightness depends on input mode and other picture settings. Brightness level will decrease over time. Due to the nature of the equipment, it is not possible to precisely maintain a constant level of brightness. *2 Use a commercially available connection cable for PC and other video connections. *3 When using the monitor lying flat on a surface (or when the monitor is tilted more than 20 degrees upward or downward from the perpendicular in relation to a level surface) the ambient temperature must be within the range of 0°C to 30°C. Temperature conditions may change when using the monitor together with optional equipment. In such cases, check the temperature conditions specified by the optional equipment. *4 No optional part is attached.

Specifications

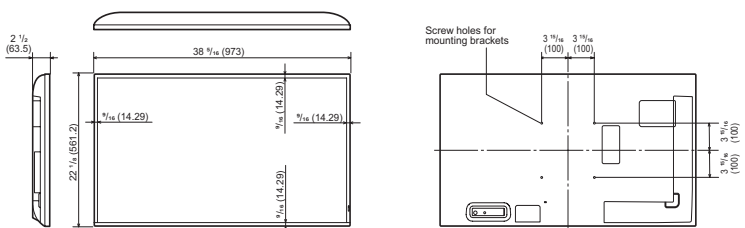
PN-HS551



PN-HS501



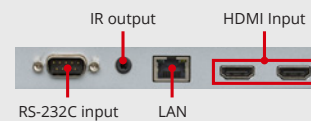
PN-HS431



Input/Output Terminals

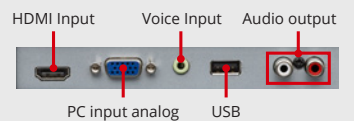
Bottom

(when placed horizontally)



Left side*

(when placed horizontally)
* When viewed from the front



Units: inch (mm)

Design and specifications are subject to change without prior notice.

SHARP

SHARP ELECTRONICS CORPORATION
100 Paragon Drive, Montvale, NJ 07645
1-800-BE-SHARP • www.sharppusa.com

HDMI™

HIGH-DEFINITION MULTIMEDIA INTERFACE

Sharp is a registered trademark of Sharp Corporation and/or its affiliated companies. The terms HDMI, HDMI High-Definition Multimedia Interface and the HDMI Logo are trademarks or registered trademarks of HDMI Licensing Administrator, Inc. All other brand names and product names may be trademarks or registered trademarks of their respective owners.