

SignWall-4K

POWERED BY Smart-



4K Ultra HD Video Wall and Digital Signage Controller

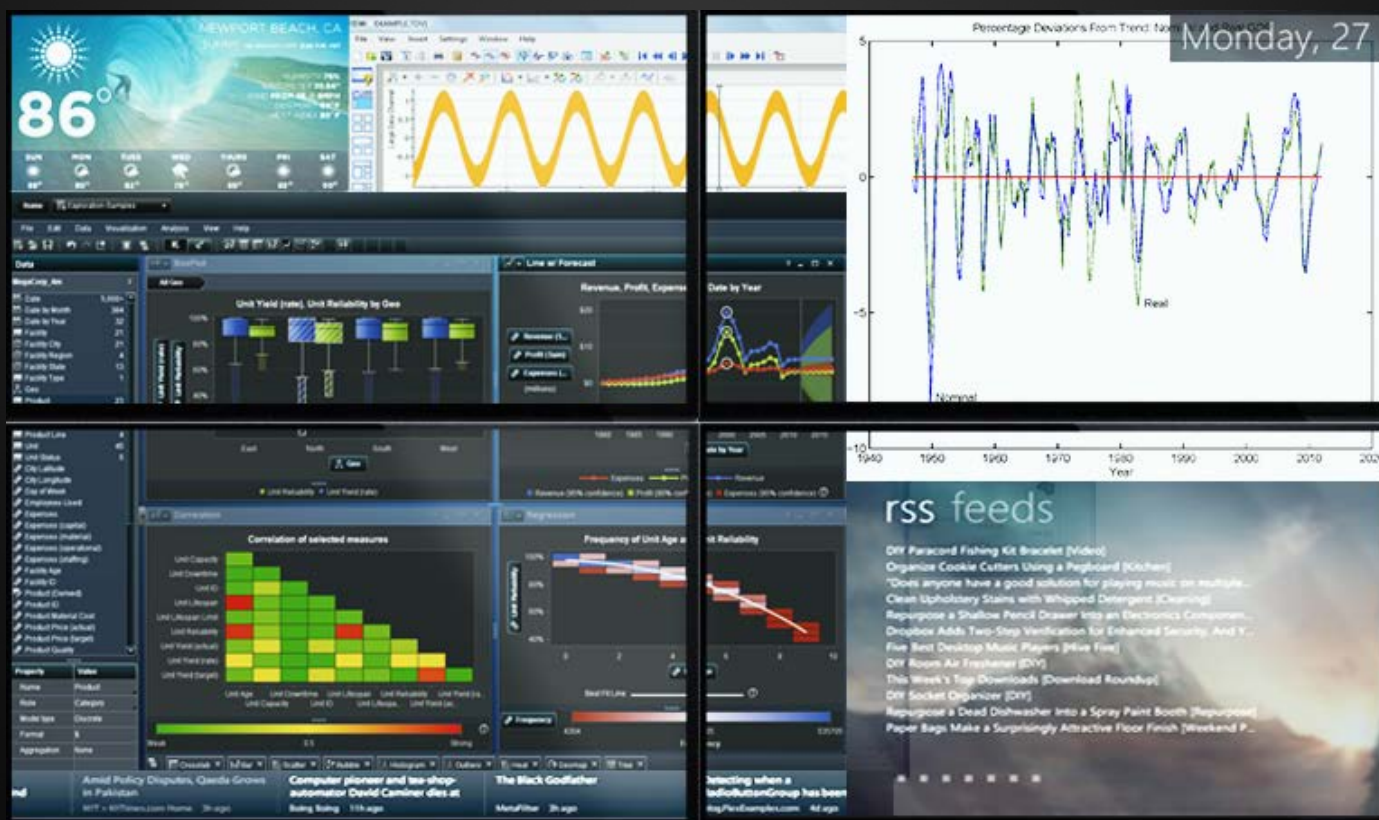
The Highly Customizable Video Wall and Digital Signage Controller that Delivers Full 4K Ultra HD Resolution with Support for Multiple Streams of Real Time Video Content

The Ultimate in 4K Control

SmartAVI's SignWall-4K gives users incredible control over their 4K Ultra HD sources for both video walls and digital signage. Routing various sources to different screens on the fly is easy, and users can even select unique screens configurations with no scaling required. As 4K content becomes more and more prevalent, users will need to be able to route and manage that content in any way they see fit, and the SignWall-4K from SmartAVI provides that user-friendly control.

Manage live HTML 5 widgets within any of SignWall-4K's customizable zones

Crystal clear 4K/2K HD video quality with live video capture and desktop sharing capabilities



Stay informed by adding a live news ticker with news from your company or favorite news site

RSS feed display capabilities

Easy to set up and manage over the Internet. SignWall-4K is fully customizable to meet your business needs. With the ability to run multiple widgets and screens at once!

How Will You Use The SignWall-4K?

Let's imagine the different ways that SignWall-4K can supercharge your visual communication to customers and employees alike.

Airports

Whether you are advertising or trying to direct travelers to their correct flight, you need a video wall system that will allow you have dynamically changing content presented in a way that is both attractive and easily organized.



Malls

Large retail malls are the wild west of advertisement. How are you going to stand out and catch the attention of your customer among the thousand stores that are trying to grab their attention? The answer is simple. SignWall-4K.



Control Rooms

Are you going to make the job of your security team harder than it already is by providing them with inferior tools? Let's hope not. SignWall-4K is the simplest way to set up a video surveillance control room with screens large enough for your security team to actually catch risks before they arise.



Schools, Colleges, and Universities

Looking to create a deeper connection with the student body at your school? Make sure everyone is up to date on upcoming events and activities? Why not set up a simple and easy to use SignWall-4K in the quad? You can simultaneously entertain, connect with, and educate your student body.



Mass Video Conferencing

Offices in Dubai, Tokyo, Moscow, Buenos Aires, San Francisco, and London? Well you need to make sure your team can communicate effectively. Why not use SignWall-4K for mass video conferencing where you can actually see everyone as clearly as if they were there?



Casinos

You work hard on creating a space where people can be entertained and let loose for a while. Casinos are places of beauty and style, so bring even more beauty and style to your casino with the visual engagement of SignWall-4K.



Corporate Lobbies

People make decisions about your business in the very first seconds of entering your office, so make sure they're impressed from the very first glance. SignWall-4K can be used to create engaging corporate presentations to run in the lobby of your office, so the deal is sealed before a client even enters the meeting.



Restaurants

Imagine a sizzling steak or a tasty cocktail displayed on a beautiful video wall in your restaurant whetting your customer's appetite from the moment they walk in. Inspire your customers' imagination and appetite and they'll not only order more food but they'll keep coming back to your restaurant for years.



What Media Does The SignWall-4K Support?

SignWall-4K supports your existing media, so you don't have to do anything fancy to create content for your video wall display. Just load in any of the following elements as is and you've already begun to create a unique video wall experience.

- HD Video (MPEG/AVI)
- Live Capture Video
- Excel
- PowerPoint
- PDF
- HTML
- Flash
- QuickTime
- RSS News Feeds
- HTML5 Widgets
- Multi-Layout Capabilities
- Images (JPEG/GIF)
- Image Backgrounds

How will you layout your display?



Thanks to the versatility of SignWall-4K, you are able to change the layout of your displays on the fly.

SignWall-4K is...

Instantly Eye-Catching



Customers Can't Look Away

Alive With Vivid Color



Run 4K/2K HDTV Resolution Video Or Looping Slideshows

Unique



Make It Fit Your Brand With Fully Customizable Video Wall Templates

Fully Automatic



Your Video Wall Will Run Content Automatically According To Schedules You Make So It's No Hassle.

Monetizable



Make More Profits By Selling Advertising Space On Your Video Wall

Flexible



Need To Change Something Immediately? Easily Update Your Video Wall's Content Over The Internet

Intuitive



You Don't Need A PhD To Use It. Learn How To Use All Features Like A Pro, In No Time

Fully Operational



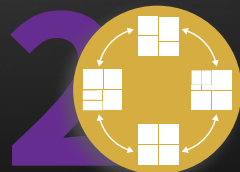
It's Plug And Go So You Can Install It In A Day!

Easy To Use: Just 1 - 2 - 3



Choose Your Content

Remember you can get started right away because SignWall-4K supports your preexisting content.



Customize Your Layout

You have complete freedom with your video wall layout, so feel free to go wild with it. If you're in a rush, SignWall-4K comes with many time tested video wall layout templates that you can easily plug your content into.

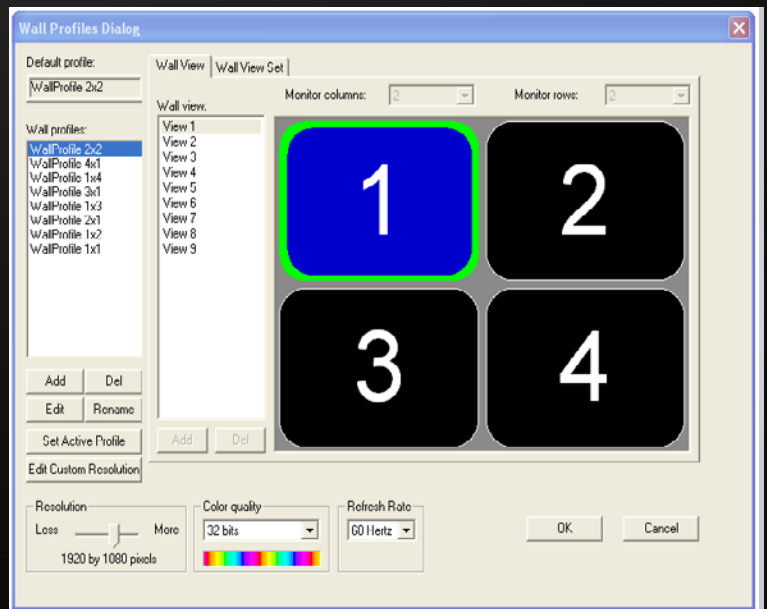
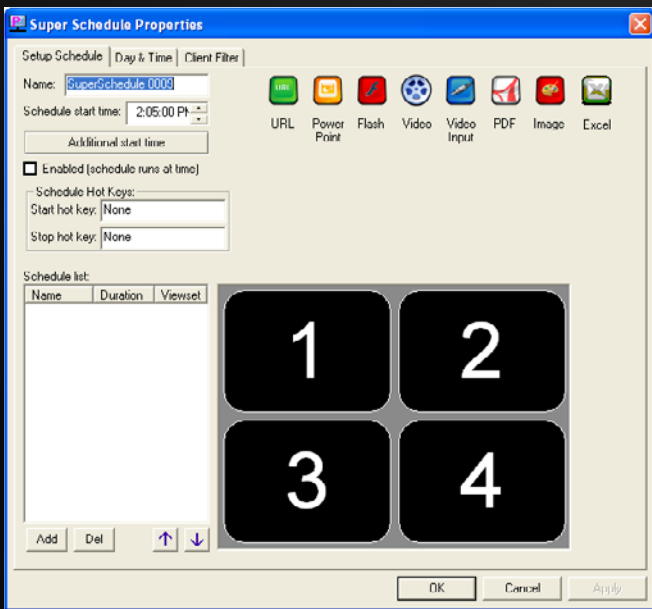
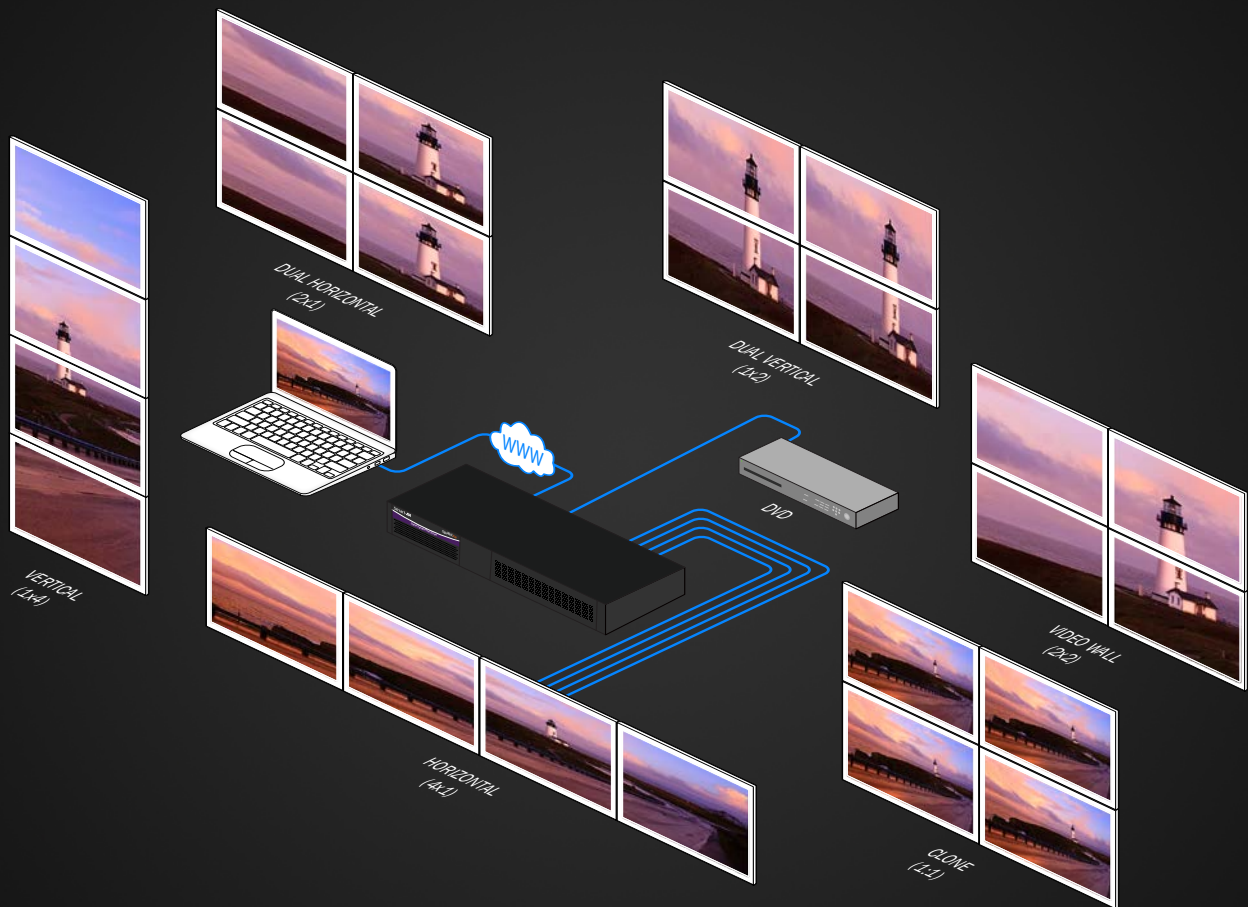


Schedule The Experience

Have your content show up exactly when and how you want. With our software, you can coordinate every bit of content to a time of day, a day of the week, or any other time frame you desire.

Installation and Setup

SignWall-4K uses the internet and the least amount of cords possible for a quick set up process.



Our bundled software allows you to create layouts, manage content, and schedule exact times for your content to display on SignWall-4K. Experience the feeling of complete control over your visual communication.

Why Is The SignWall-4K Hardware So Good and Affordable?

It's because SmartAVI chooses to use hardware components that are not only time-tested and highly-compatible but also widely-available so we can build our products with superior quality for much cheaper than other video walls.

The genius is in that SmartAVI mixes and matches the best components from trusted brands like Intel, NVidia, and SanDisk to create tailor-made solutions for our customer's needs.

This means that SignWall-4K is not only aggressively priced but also easy to upgrade and repair, so you can feel safe in making your investment in a video wall.

Some of the trusted hardware brands we use:



SignWall-4K Now Supports Live Capture Technology

SignWall-4K Now Supports Live Capture Technology

In addition to the content that you program your SignWall-4K to run, you can now incorporate live video content coming directly from a cable box, a camera, or your local network.

So that means you can display:

- A TV program or a sports game side by side with your loaded content
- A live camera feed for security surveillance
- Content directly from the desktop of your computer

Just plug in whatever live feed you want to use into the SignWall-4K and it can now be placed anywhere you like within the layout of your video wall.

And remember that SignWall-4K supports full HD on each stream of content

SignWall-4K Specifications

VIDEO SPECIFICATIONS

GPU	AMD Radeon™ HD7750
GPU Core Clock	800Mhz core clock
Video Memory	2GB GDDR5
Memory Clock / Bandwidth	1125Mhz GDDR5 (128-bit)
APIs supported	OpenGL 4.2 / OpenCL 1.2 / DirectX 11.1
BUS	PCI Express 3.0 compliant, x16
Cooler	FAN sink Cooler (Single slot)
Board Size	Full Height, Half length size
Display Output	4 x UHD HDMI 4K Ports (Active 3840 x 2160 per port dongle) + 1 Mini Display Port V1.2
HDMI Connectivity	Up to 10M tested
Maximum Resolution	7680 x 4320 resolution (Landscape) (4* 3840 x 2160 UHD HDMI/monitors) 8K Display 3840 x 8640 resolution (Portrait) (4* 3840 x 2160 UHD HDMI/Monitors rotate) 19200 x 2160 resolution Surround View (Landscape) (5* 3840 x 2160 UHD HDMI/monitors)

AUDIO INTERFACE

Connector	Stereo 3.5mm Female, SPDIF
-----------	----------------------------

OTHER INTERFACES

USB	(2) USB 2.0, (2) USB 3.0
Firewire	IEEE 1394a
Power	Internal 100-240 VAC, 50-60 HZ, 500 Watts
Network	RJ-45 Gigabit

ENVIRONMENTAL

* Operating temperature:	35° F to 96° F
* Storage temperature:	-20° F to 140° F
Dimensions	17"W x 3.5"(2U)H x 15"D

WARRANTY

1 Year

LIVE CAPTURE TECHNICAL SPECIFICATIONS

Live Capture HD Input (Features)	1080p/60 Hz <ul style="list-style-type: none"> • Can capture HDMI, DVI, YPbPr • Capture LPCM audio signal via HDMI • Can switch signal dynamically, DVI/HDMI, YPbPr • Compatible with CVBS and S-Video • Supports automatic detection of input video format, automatic detection of the valid area of video • Supports for multi-stage image zoom and provides with three scales for image aspect ratio • Supports color adjustment, it can adjust image brightness, contrast, hue, saturation, Gamma; also R, G, B brightness and contrast can be adjusted separately
Hardware Color Conversion	Output RGB24, RGB32, YUY2, UYVY, I420
De-Interlace	Vertical Blend and Motion Adaptive

SYSTEM SPECIFICATIONS

Motherboard	Intel BOXDP67DEB3 LGA 1155 Intel P67 SATA 6Gb/s USB 3.0 Micro ATX Intel Motherboard
Processor	Intel Core i7-2600 Sandy Bridge 3.4GHz (3.8GHz Turbo Boost) LGA 1155 95W Quad-Core Desktop Processor
RAM	G.SKILL Ripjaws X Series 4GB (2 x 2GB) 240-Pin DDR3 SDRAM DDR3 1333 (PC3 10666) Desktop Memory
Storage	SanDisk Ultra SDSSDH-120G-G25 2.5" 120GB SATA II Internal Solid State Drive (SSD)
Operating System	Windows 7
Onboard Video	Intel HD Graphics 2000 PCI-E
Onboard Memory	3GB DDR3, 160 MHz of working frequency, 32bit of bit wide
Input Interface	1 HDMI interface(DVI) 1 DB9 interface(to YPbPr, S-Video, CVBS,1 unbalanced stereo audio line in)
Maximum Sampling Rate	CVBS: 54MHz (4x Oversampling) HDMI/DVI: 225MHz
YPbPr Input Mode	480i, 576i, 480p, 576p, 720p, 1080i,1080p
DVI Input Mode	480i, 576i, 480p, 576p, 720p, 1080i,1080p
HDMI Input Mode	Up to HDMI 1.3 standard, support 36bit DeepColor
CVBS Input	Standard PAL/NTSC



MODEL #	DESCRIPTION
4K-SVWP-120G75	SignWall-4K Video Wall with one capture including 120GB Disk, 8GB RAM, i7. Includes: (4K-SVWP-120G75 & CCPW06)



Designed and Manufactured in the USA

www.smartavi.com

Tel: 800.AVI.2131 • 818.503.6200 • 11651

Vanowen St. North Hollywood, CA. 91605

Smart-AVI
SMART AUDIO VIDEO INNOVATION