

# SaviGateway G300

Web Stream Network Gateway & Switch



Easy control & switching for multiple web stream encoders and decoders over local networks or IP.

## FEATURES

- Connect, configure, and control encoders & decoders over LAN or Internet browsers
- User-friendly web-based control interface makes it easy to access and control units over the Internet
- Highly scalable: add multiple encoders & decoders to the gateway, and display streams in any combination
- Name favorite video streams and displays for enhanced organization & switching
- Supports existing TCP/IP & Ethernet Network architecture; no network reconfiguration required!
- Plug-and-play for immediate use

## APPLICATIONS

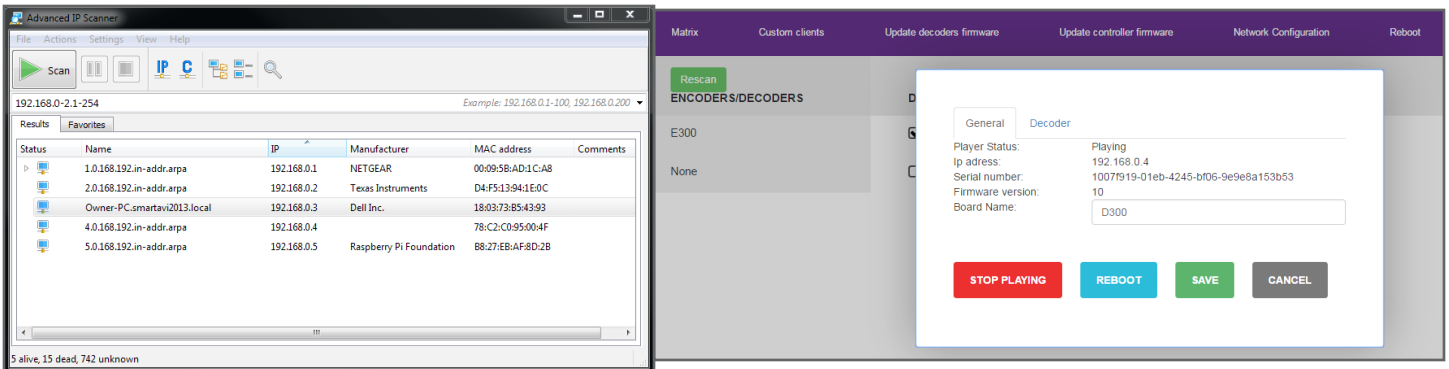
- Retail Stores
- Business Lobbies
- Restaurants
- Airports & Transportation Hubs
- Hospitals
- Schools & Universities
- Hotels
- Government Buildings
- Convention & Conference Centers
- Entertainment Venues



## MANAGE ENTIRE STREAMING SET-UPS FROM A SINGLE BOX

The SaviGateway G300 makes it easy to connect, configure, and control your web stream system from the convenience of one plug-and-play network gateway. Highly compatible with SmartAVI's SaviStreamer E300 & SaviDecoder D300 web stream solutions, the SaviGateway G300 lets you take command of a streaming set-up via LAN or an Internet browser.

The SaviGateway G300 connects you to a simple yet robust webpage interface, allowing you to connect to encoders and decoders remotely using units' unique IP addresses. From there, you can connect multiple streaming devices and displays to your SaviGateway, with the ability to control and switch streams between them with ease!



*Easily connect, configure, and control streaming devices & displays with the SaviGateway G300's user-friendly webpage command interface.*

The SaviGateway G300 is designed to keep your streaming experience centralized and seamless, allowing you to organize and label favorite streams, devices, and displays from the convenience of a PC. Simplify your streaming experience today with the SaviGateway G300 powered by SmartAVI!

## PART OF THE A/V OVER IP SOLUTIONS SYSTEM

The SaviGateway G300 one of three A/V Over IP Solutions powered by SmartAVI. Comprised of the G300, Savistreamer E300 encoder, and SaviDecoder D300 decoder, A/V Over IP Solutions allow users to optimize distribution of HD media through the use of high quality, low-bandwidth web streams.



SaviStreamer E300



SaviDecoder D300

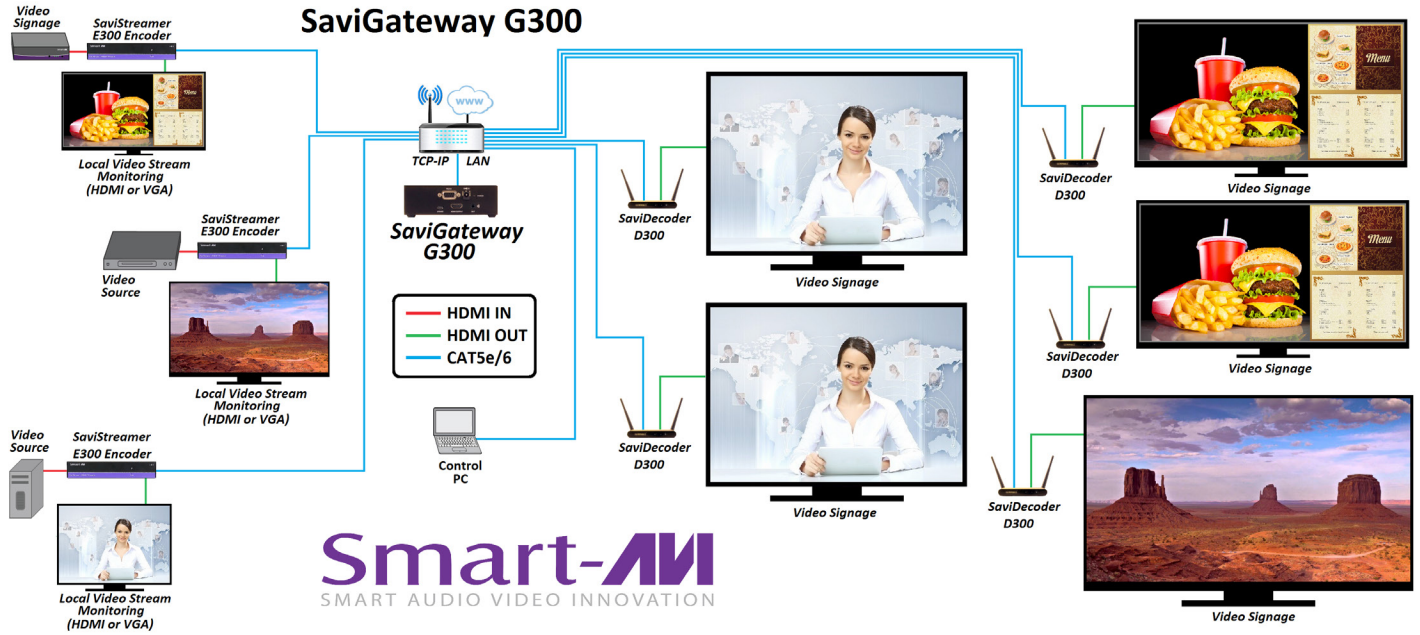


SaviGateway G300

## A/V Over IP Solutions excel at:

- Live event streaming
- Long-distance display unity
- International conferencing
- Broadcasting and syndication
- Data and visualization sharing
- Commercial content distribution
- Digital signage distribution
- Video wall distribution

# SPECIFICATIONS



**Smart-AVI**  
SMART AUDIO VIDEO INNOVATION



SaviGateway G300 Input



SaviGateway G300 Output

HARDWARE SPECIFICATIONS		CONTROL	
Video Output	(1) HDMI female	Ethernet (TCP/IP)	PC web browser via RJ-45
Audio Output	(1) 3.5 stereo audio jack	<b>OTHER</b>	
USB	(4) USB 2.0 Type-A female	Power Supply	PS5VDC2A
Operating System	Linux	Dimensions	4.875" W x 1.75" H x 3.0" D
CPU	1.2 GHz 64-bit quad-core ARMv8	Weight	0.35 lbs
RAM	1 GB	Storage Temperature	-4 to 149 °F (-20 to 65°C )
Onboard Storage	16 GB	Working Temperature	32 to 122 °F (0 to 50°C )
Ethernet	(1) RJ-45 jack, Onboard 10/100 Ethernet	Storage Humidity	Up to 90% RH (no condensation)
RS-232	(1) DB9 female	Working Humidity	Up to 85% RH (no condensation)

## ORDERING INFORMATION

Part No.	Description
SAVI-G300-S	Web Stream Network Gateway & Switch Includes: [SAVI-G300, (PS5VDC2A)]

[www.smartavi.com](http://www.smartavi.com)

Tel: 800.AVI.2131 • 818.503.6200 • 11651  
Vanowen St. North Hollywood, CA. 91605

**Smart-AVI**  
SMART AUDIO VIDEO INNOVATION