

DPN-4Quad

4-Port DisplayPort KVM Switch with USB 2.0 and Audio



**UNINTERRUPTED
USB KEYBOARD & MOUSE
EMULATION**

Access & control up to 4 computers'
USB keyboard-mouse functions
from a single KVM box.

Touchboards

205 Westwood Ave, Long Branch, NJ 07740
Phone: 866-94 BOARDS (26273) / (732)-222-1511
Fax: (732)-222-7088 | E-mail: sales@touchboards.com



OVERVIEW

DPN-4Quad is a dedicated multi-platform KVM switch capable of managing up to 4 different computers through four DisplayPort monitors, one USB keyboard & mouse, a single set of speakers and a USB 2.0 Device.

The USB emulation technology utilized by DPN-4Quad enables immediate hotkey source switching through a remote USB keyboard and mouse. DPN-4Quad delivers high resolutions of up to 4K (3840x2160 @ 30Hz) with zero pixel loss from TMDS signal correction.

FEATURES

- Supports Mac, PC, Linux and Sun Mac OS, Sun OS, Unix
- Supports HD 4K (3840x2160 @ 30Hz)
- 4K-ready DisplayPort 1.2 connectors
- Zero pixel loss with TMDS signal correction
- Supports all USB 2.0 Devices
- Control Sun, Mac or PC computers from a common KVM console
- Compatible with all major software including Windows, Linux, Mac OS, Sun OS, Unix
- Rack mountable in a standard 19 inch rack
- Flash upgradeable firmware
- Front panel keys for selecting users and channels manually
- Supports USB keyboard and mouse
- Balanced stereo audio output
- RS-232 control for remote control
- Hot-key commands for quick channel selection.
- Independent (asynchronous) switching of KVM and peripheral USB/audio ports. Users can listen to audio from one computer while working on the other or scan a document and save in another computer.
- Complete keyboard emulation for error free booting
- Top quality 4K (3840x2160 @ 30Hz) HD

SOURCE SWITCHING MADE EASY

The DPN-4Quad provides a simplified management approach to up 4 computers with DisplayPort, stereo audio, and USB 2.0 outputs. This dynamic KVM console can be controlled remotely from easily accessible keyboard hotkeys or RS-232 commands, as well as directly through the console's easy to read front panel.

EDID LEARNING & PROGRAMMING

Detection of DDC signals for all attached devices is effortless with DPN-4Quad due to its real EDID learning and programming. This is vital in optimizing the resolution of the selected graphics card to properly display on the remote monitor. Furthermore, the EDID learning feature continues to replicate the right DDC for the computer to enable the display card to effectively work when unused ports are not selected.

FULL USB KEYBOARD AND MOUSE EMULATION

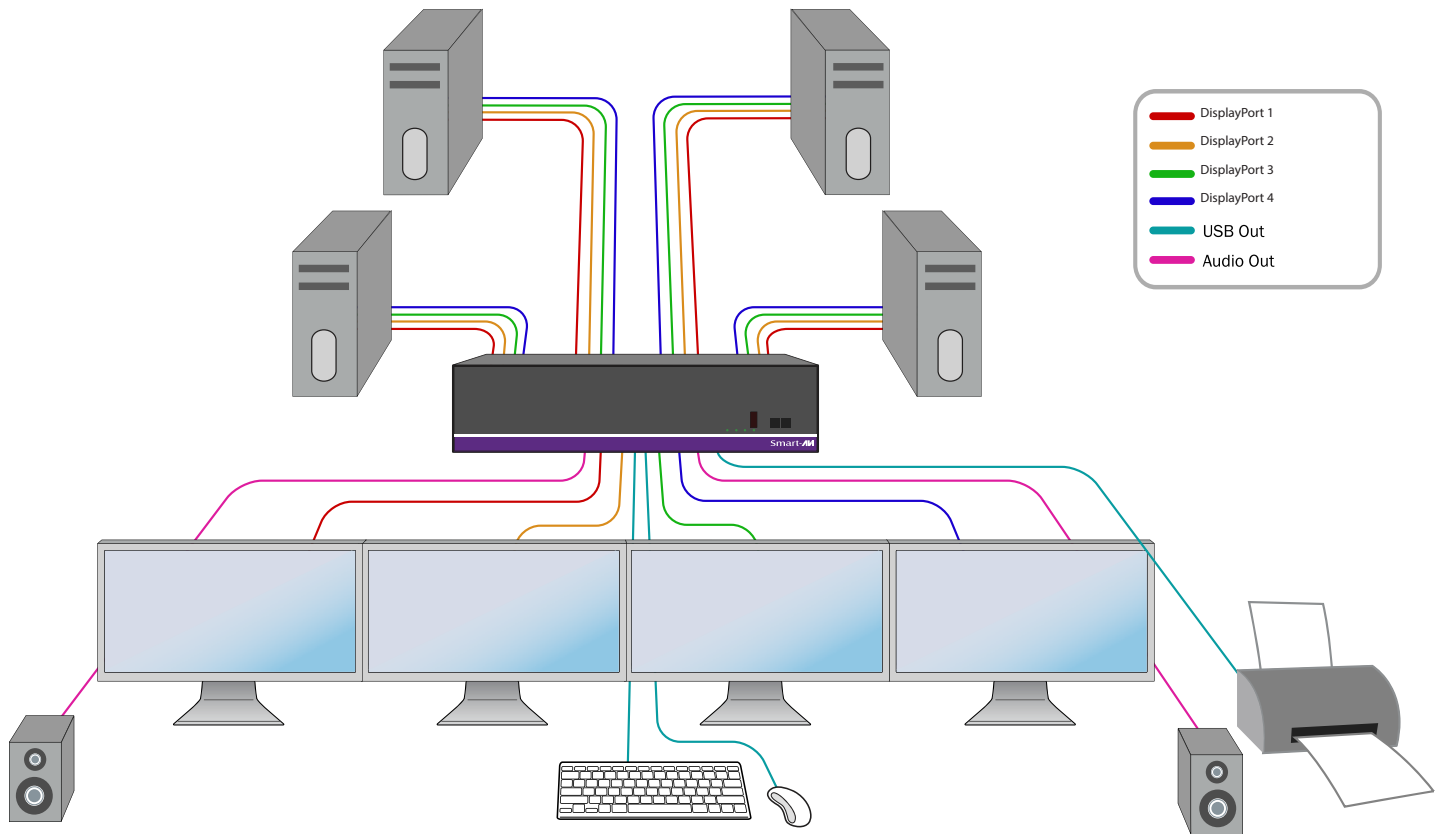
The USB keyboard and mouse emulation utilized by DPN-4Quad provides accurate and quick source switching by means of keyboard hotkeys and mouse actions. DPN-4Quad imitates the presence of a keyboard and mouse for every attached computer through a USB cable. This is essential as it simulates the existence of the keyboard and mouse to all the computers while switching without interruptions.

REAL-WORLD APPLICATIONS

The DPN-4Quad has a broad range of applications, but the main function of this KVM switch is to centralize the access of several computers into one comprehensive PC. Not only does it function as a KVM console, it also supports USB 2.0 functionality. This allows a user at the console to use USB devices that would otherwise be unavailable with conventional KVM devices. For example, it allows a user to use a flash memory drive or camera without having to plug it directly into the remote computer. DPN-4Quad is a perfect solution for the medical or industrial field, where it may not be practical or safe to have one or more CPUs in the general vicinity.

- Server Collocation
- Digital Signage
- Education
- Airports
- Dealer Rooms
- Control Rooms
- Audio/Visual Presentations
- Shopping Centers
- Hotels/Resorts
- KVM Switches

4 Computers



FLEXIBLE CONTROL

RS-232: Any external device or program supporting RS-232 can control the DPN-4Quad. The DPN-4Quad uses very simple protocol, that enables easy integration with other devices.

USB/KEYBOARD: Hot keys enable the user to switch and control all the different functions of the KVM system.

FLEXIBLE SHARING

INDEPENDENT SIMULTANEOUS DEVICE SELECTION: Flexibility is key with the DPN-4Quad. It enables the use of a USB keyboard and mouse of one computer while other USB peripherals such as speakers, scanners and printers are connected to other computer sources. DPN-4Quad maintains the ability to switch all connected devices to any one of the computer sources as with any other KVM switches.

SPECIFICATIONS



DPN-4Quad Front



DPN-4Quad Rear

VIDEO	
Format	DisplayPort 1.4
Maximum Pixel Clock	165 MHz
Input Interface	(16) DisplayPort
Output Interface	(4) DisplayPort
Resolution	Up to 4K (3840x2160 @30Hz)
DDC	5 volts p-p (TTL)
Input Equalization	Automatic
Input Cable Length	Up to 20 ft.
Output Cable Length	Up to 20 ft.
Data Rate	1.65 Gbps
AUDIO	
Input Interface	(4) 3.5 mm Stereo Audio
Output Interface	(1) 3.5 mm Stereo Audio
Impedance	600 Ohm
Frequency Response	20 Hz to 20 kHz
Nominal Level	0-1.0 V
Common Mode	Rejection at 60 dB

USB	
Signal Type	USB 2.0, 1.1, and 1.0 w/ internal hub
Input Interface	(4) USB Type B
Output Interface	(2) USB 1.1 Type A for KVM Devices (2) USB 2.0 Type A Transparent
CONTROL	
Front Panel	< M1 / M2 > Source SELECT Buttons
RS-232	DB9 Female - 9600 N,8,1, No flow control
Hot Keys	Via Keyboard
OTHER	
Power	External 100-240 VAC/ 5VDC4A
Dimensions	4.5" H x 6" D x 12.75" W
Weight	5.6 lbs
Approvals	UL, CE, ROHS Compliant
Operating Temp.	+23 to +95°F (-5 to +35°C)
Storage Temp.	-4 to 185°F (-20 to 85°C)
Humidity	Up to 95% (No Condensation)

ORDERING INFORMATION

Part No.	Description
DPN-4QuadS	DPN-4Quad, 4x4 DisplayPort, USB 2.0, Audio Switch. Includes: [DPN-4Quad & (PS5VD-C4A)]



Designed and Manufactured in the USA

www.smartavi.com

Tel: 800.AVI.2131 • 818.503.6200 • 11651

Vanowen St. North Hollywood, CA. 91605

Smart-AVI
SMART AUDIO VIDEO INNOVATION