

# HDR 32x32 Plus

4K 30Hz HDMI 32x32 Matrix Switcher



The HDR 32x32 Plus allows users to route content from any 32 HDMI sources to any 32 displays independently up to 40 feet away.

## FEATURES

- 4K 30Hz HDMI 32x32 routers switches 16 HDMI inputs with 32 HDMI outputs
- Sources can be routed independently to displays
- Switching controlled via the front panel, RS-232, IR, and TCP/IP
- Supports high definition video resolutions of 720p, 1080p and 4K
- Supports 7.1 Digital Surround Sound Audio
- HDCP and HDMI 1.4 compliant
- Supports EDID for total control of compliant displays
- Delivers uncompressed digital video with zero signal loss
- Outputs HDMI up to 40 feet
- Rack mountable

## APPLICATIONS

- Wall Displays
- Digital Signage
- Airports
- Dealer Rooms
- Control Rooms
- Audio/Visual Presentations
- Shopping Centers
- Security
- Point-of-Sale
- Hotels/Resorts
- KVM Switches
- an more.



## OVERVIEW

The HDR 32x32 Plus is a 4K 30Hz 32x32 router that conforms to HDMI standards and provides a connection to view any thirty-two HDMI video sources on any combination of thirty-two video displays. The matrix configuration provides maximum flexibility, allowing switching between any high-definition source and/or display. The HDR 32x32 Plus provides HDMI output up to 40 feet with HDTV resolutions of 480p, 720p, 1080p and 4K. The system works with Blu-ray players, PCs and satellite set-top boxes that connect to an HDMI display.

Users can switch to any source locally or remotely via a RS-232, IR, USB or TCP/IP connection. Our HDMI router is controlled by Windows®-based software that is easy to understand and simple to use – a cornerstone of all SmartAVI products.

## FLEXIBLE CONTROL

The SmartAVI HDR 32x32 Plus can be controlled from the front panel via keypad and LCD, allowing users to see which inputs are connected to which outputs.

**RS-232:** Controlling the HDR 32x32 Plus has never been simpler with SmartAVI's Windows®-based SmartControl software. With SmartControl, users can assign a unique name to each port on the matrix, as well as each display, customizing projects to meet users' needs.

Although all the functions of the matrix are available locally on the front panel of the HDR 32x32 Plus, using SmartControl allows for customization of all the matrix's functions.

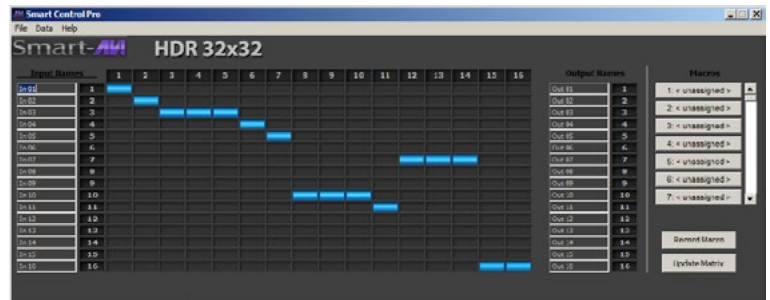
**IR:** Many system professionals prefer the IR control interface because it offers greater flexibility to manage the HDR 32x32 Plus at a distance. In some cases, the displays will not be visible from the matrix. In these situations it is necessary to control the matrix with infrared control.

**TCP/IP:** Remote control is essential to real-time management of the HDR 32x32 Plus. SmartAVI's SMTCP module is the perfect solution to effective remote management. Simply connect the SMTCP module to the HDR 32x32 Plus and connect from anywhere on the Internet. When users need to make a change but can't be there in person, the SMTCP makes remote control a snap.

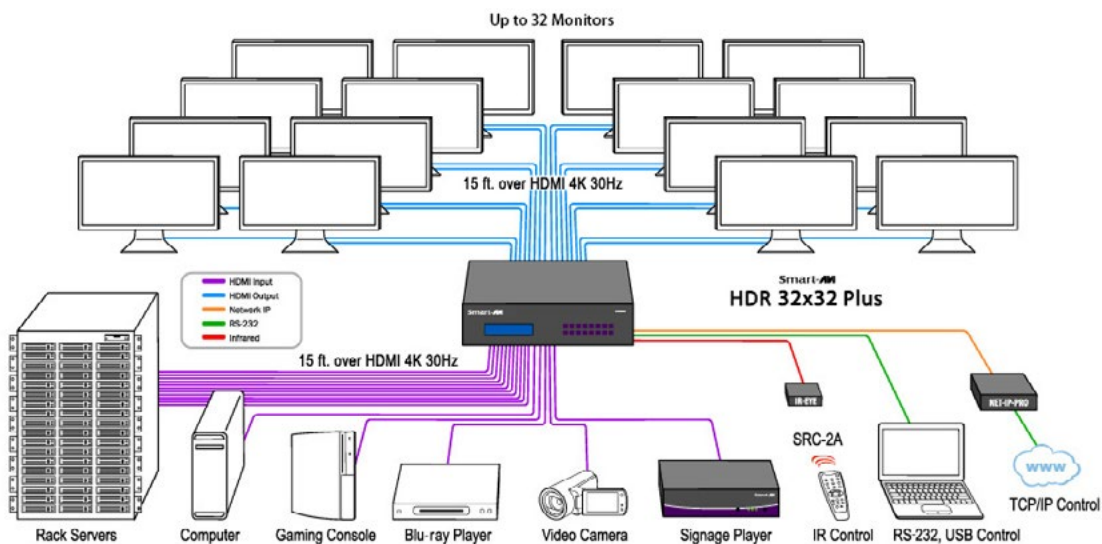
## SOFTWARE SETUP

The HDR 32x32 Plus hardware comes with the easy-to-use, Windows®-based SmartControl software application that makes user interface simple. [Download here.](#)

Using SmartControl, you can assign a unique name to each port on the HDR 32x32 Plus, customizing projects to your preference and needs.

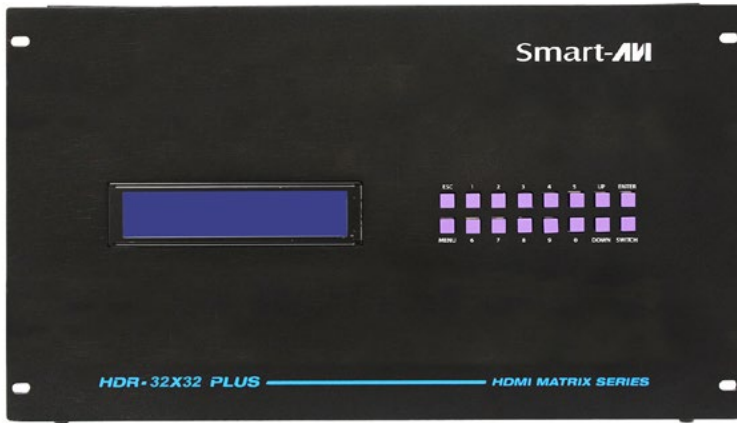


## APPLICATION DIAGRAM



# SPECIFICATIONS

HDR 32x32 Plus Front



HDR 32x32 Plus Back



VIDEO	
HDTV Resolutions	480p, 720p, 1080i, 1080p, 4K
TV Resolution	480i
Input Interface	32 HDMI Type A 19-pin Female TMDS
Output Interface	32 HDMI Type A 19-pin Female TMDS
Input Cable Length	Up to 40 ft.
Output Cable Length	Up to 40 ft.

OTHER	
Warranty	Limited 1 Year Parts and Labor
Control	Panel, RS-232, IR and TCP/IP
Power	Internal 100-240 VAC, 50-60 HZ, 60 Watts
Dimensions	17.125"W x 12"H x 12"D (19" Rack mount)
Weight	24.45 lbs.
Operating Temp.	0 to +40°C (+32° to +104° F)
Operating Humidity	10% to 85% (Non-condensing)
Storage Temp.	-20° to +60°C (+20° to +140° F)
Storage Humidity	10% to 85% (Non-condensing)
HDR 32X32 Approvals	FCC, CE, RoHS Compliant
Power Supply Approvals	UL, CE, CSA, CEC, RoHS

ORDERING INFORMATION	
Part No.	Description
HDR32X32PLUS-S	HDMI 32x32 Router: Includes: [HDR32X32, (SM-CSW) & (CCPWR06)]
NET-IP-PROS	TCP/IP Control for any SmartAVI Matrix/Switch. Includes: [NET-IP-PRO, CCRS232MM06, PS5VD2A-WLLMNT-Z]
SM-LED	IR Emitter 6' Single LED
SM-EYE	External Infrared Receiver; IR range of 10' to 30'
SM-EYE2	External Infrared Receiver; IR range of 10' to 20', 38KHz Max
RMT-2	Remote Control Device type 2



Designed and Manufactured in the USA

[www.smartavi.com](http://www.smartavi.com)

Tel: 800.AVI.2131 • 818.503.6200 • 11651

Vanowen St. North Hollywood, CA. 91605

**Smart-*AVI***  
SMART AUDIO VIDEO INNOVATION