

MXWall-LT

4-Input Up to 12-Output Video Wall Processor and Matrix Switch



Touchboards

205 Westwood Ave, Long Branch, NJ 07740
Phone: 866-94 BOARDS (26273) / (732)-222-1511
Fax: (732)-222-7088 | E-mail: sales@touchboards.com

All-in-one video wall and matrix solution with 1080p Full HD resolution output, integrated converter & scaler, flexible creative configuration modes, and user friendly control software!

FEATURES

- Complete hardware solution
- Plug-and-play ready
- 4-8 HDMI Inputs
- Up to 12 HDMI Outputs
- Supports DVI with adaptors
- 1080p (1920x1080 @ 60Hz) Output Resolution
- Creative video wall display modes
- Easy control (front-panel, software, and RS-232)
- HDCP and HDMI 1.4 compliant
- User-Friendly MXWall Manager Software
- For 4x8, 8x8, and 4x12 video wall setups

APPLICATIONS

- Corporate or Educational Presentations
- Airport Installations
- Wall Displays
- Digital Signage
- Dealer Rooms
- Control Rooms
- Shopping Centers
- Security
- Point-of-Sale Retail
- Entertainment Venues
- Corporate Lobbies
- Restaurants



FULLY SCALABLE VIDEO WALL PROCESSING SOLUTION

Combining full switching capabilities of a matrix and the versatile high definition capabilities of a converter-scaler, SmartAVI's MXWall-LT is an ideal all-in-one video wall processing solution. Specifically designed for demanding video display applications, the MXWall-LT lets users effortlessly manage and route 4 HDMI video sources up to 12 HD displays in real time and stellar picture resolutions up to 1080p.

The MXWall-LT features multi-screen configurations options and full scaling capabilities across a maximum of 12 screens. Completely compatible with HDCP and HDMI 1.4 connectors, the MXWall-LT reliably transmits HD content across fully scalable display configurations in real-time for 24/7 uninterrupted use and HD output.



EXPANDABLE INPUT-OUTPUT CONFIGURATIONS	
INPUT	OUTPUT
4	8
8	8
4	12

HD imagery. Flexible layouts. Striking results: MXWall-LT offers top-grade video wall

USER-FRIENDLY, FLEXIBLE, POWERFUL

Plug-and-play ready, the MXWall-LT requires absolutely no technical skill to install and operate. Optimized for USB media and HDMI device compatibility, the MXWall-LT offers both ease and freedom to craft video wall displays in any capacity.

Perfect for mid-sized video-wall and digital signage arrangements, MXWall-LT is terrific for public displays, entertainment venues, and transportation hubs like airports. The MXWall-LT's reliability and scalability also make it an essential addition to control rooms, command centers, and other mission-critical environments: no matter your video wall needs, SmartAVI's MXWall-LT delivers them to amazing effect!

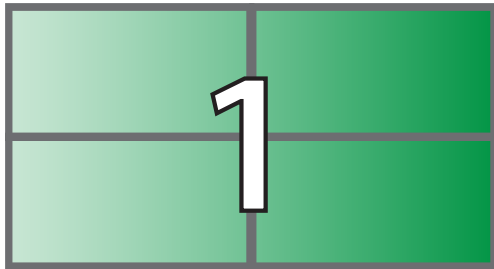


- **HD VIDEO**
- **IMAGES**
- **FLASH**
- **RSS**
- **MICROSOFT OFFICE FILES**
- **STREAMING**
- **AND MORE!**

MXWall-LT is media-format friendly and supports multiple file types ideal for crafting engaging video wall displays.

CREATIVE CONFIGURATIONS!

The MXWall-LT features a robust selection of display configurations that makes crafting your ideal multi-screen presentations effortless and effective!



Video Wall Mode:

Project video from a single input source to every screen on your video wall for an impressive 1080p HD display!



Individual Mode:

Create dynamic video collages by sending video source signals individually from each input to any output on your video wall.

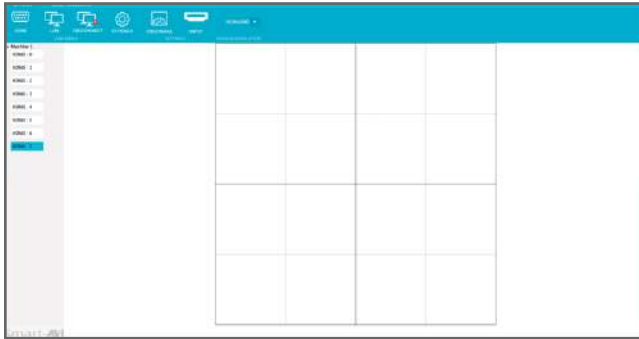


Quad Mode:

Project video from a single input source to any four connected screens in your video wall. These attractive quad configurations are a great way to add variety to your displays!

MXWall Manager Software

The MXWall-LT also comes with SmartAVI's intuitive MXWall Manager software, which allows users to create amazing video wall displays in minutes. Its click-and-drag operation and simple layout ensure managing video walls is easy and effective every time!



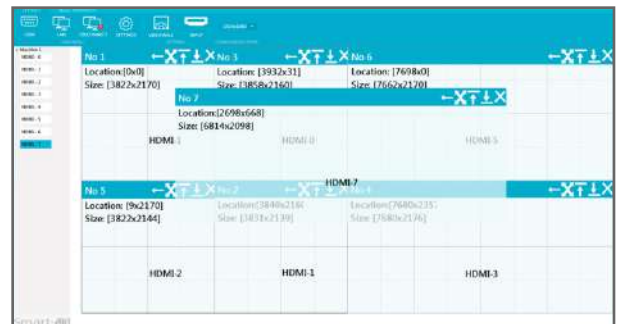
EASY TO USE:

The MXWall Manager software features a streamlined layout that keeps things simple and clear. Our intuitive menus and settings interface ensure set-ups always are easy and stress-free.

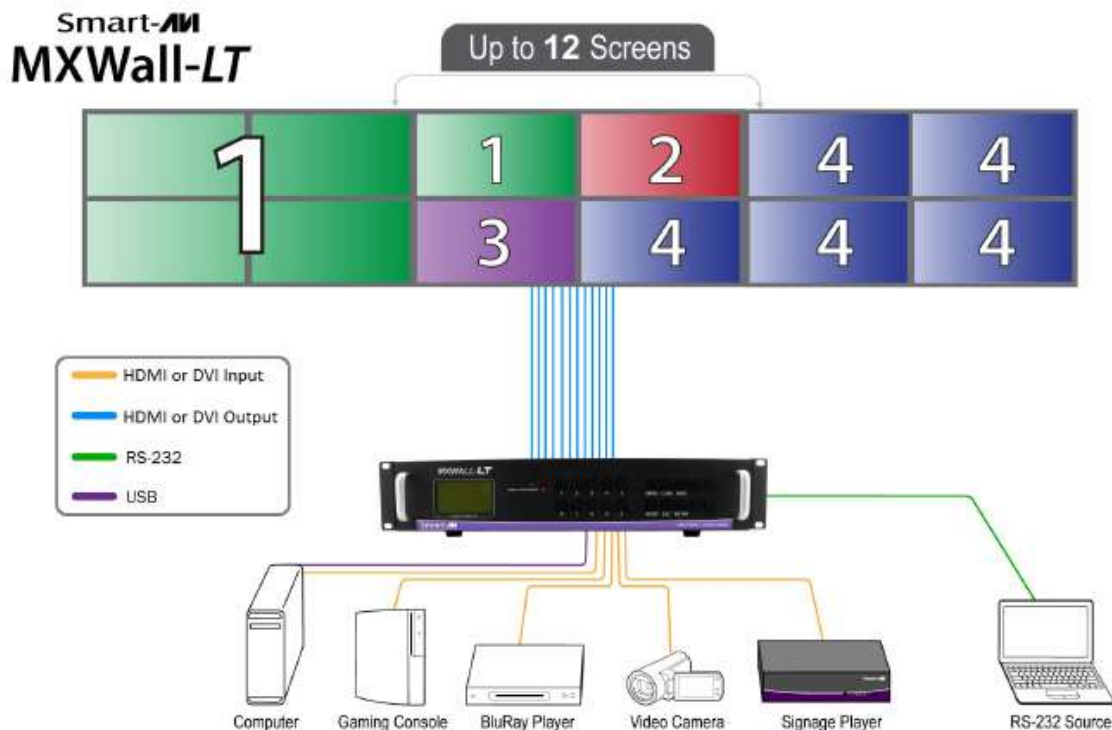
Choose from settings like aspect-ratio, rows, columns, video sources, and more! Adjust resolutions, scaling, and active monitors on the fly. Not happy with your current configuration? Just clear the workspace and start fresh: it's that simple!

FULLY CUSTOMIZABLE:

Take your pick of any of our versatile display modes. Select any screen and input the source you would prefer. Even multiple video sources can share a single screen with INDIVIDUAL and QUAD display modes. The possibilities are as endless as your creative potential!



APPLICATION DIAGRAM



SPECIFICATIONS



MXWall-LT (4x12) Front



MXWall-LT (4x12) Rear

VIDEO

Video Amplifier Bandwidth	3.2 G
Input Video Signal	Video (TMDS) 0.5~1.0Vpp
Input DDC Signal	5 volts
Compliances	HDMI 1.4, HDCP
Pixel Rates	Clock frequency beyond 165Mpix/second
Format	4:4:4 and 4:2:2 data input formats
Resolution	480p, 720p, 1080i, 1080p
Input Card Format	4-port HDMI card
Output Card Format	4-port HDMI card
Input Slots	Up to 8 (2 cards)
Output Slots	Up to 12 (3 cards)
Video Type	RGB/YCBCR : 24/30/36-bits, YCBCR: 8/10/12/16/20/24-bits

CONTROLS

Front	Front-panel tactile switch buttons
RS-232	9600bps, Software flow DB9 Female
TCP/IP	Telnet

OTHER

Working Temperature	0°C~+55°C
Storage Humidity	10%~90%
Weight	20 lbs.
Dimensions	17 in (W) x 3.5 in (H) x 15 in (D)
Power Supply	50/60Hz, 100~230 VAC
Consumption	300W

MXWALL MANAGER SOFTWARE

Operating System	Windows 7-10, Android
------------------	-----------------------

ORDERING INFORMATION

Part No.	Description
MXWALL-LT-S	4-Input 12-Output Video Wall Processor and Matrix Switch Includes: [MXWALL-LT, (CCPWR06)]



Designed and Manufactured in the USA

www.smartavi.com

Tel: 800.AVI.2131 • 818.503.6200 • 11651
Vanowen St. North Hollywood, CA. 91605

Smart-AVI
SMART AUDIO VIDEO INNOVATION