

SignWall Streaming

VIDEO WALL
SYSTEM

**HD
CAPTURE**

NOW WITH STREAMING



CCTV



HDMI Capture



IP Camera



PC Capture



Made in the U.S.A.



SignWall Streaming HD Video Wall System with Live HD Capture and Advanced Streaming Technology

- Supports Multiple Streaming Formats - Wide Streaming Protocol
- Video Wall Dynamic Layout Setup
- Comprehensive signage player supports a broad range of media types including video, images, PowerPoint, Flash, PDF, Excel and more
- Use with up to four high-definition displays per player
- For use with all video streaming devices including IP cameras and CCTV
- Capture live 1080p HDMI input and play it back in real-time

Touchboards

205 Westwood Ave, Long Branch, NJ 07740
Phone: 866-94 BOARDS (26273) / (732)-222-1511
Fax: (732)-222-7088 | E-mail: sales@touchboards.com

Smart-AVI
SMART AUDIO VIDEO INNOVATION

www.smartavi.com

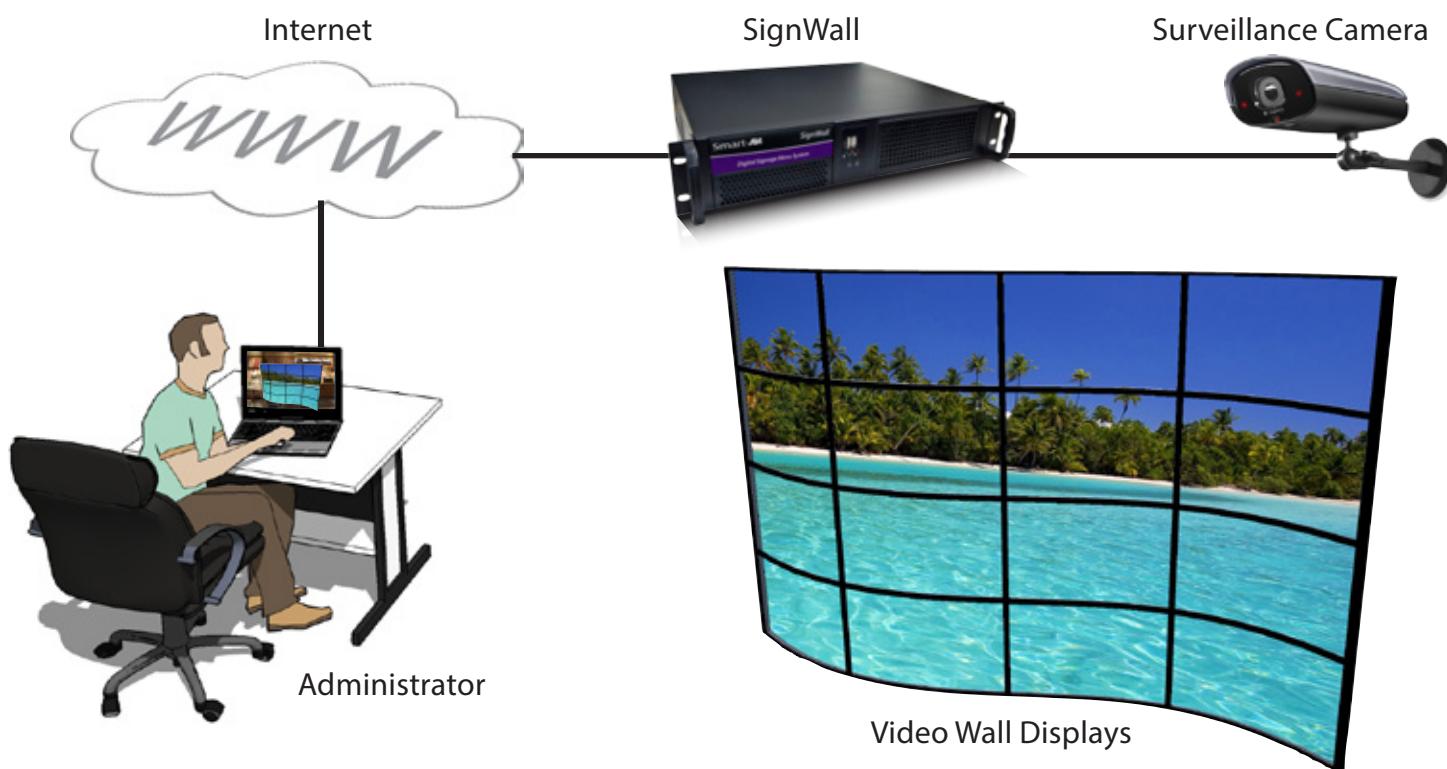


Made in the USA

LIVE STREAMING VIDEO SURVEILLANCE

Stream live video to your SignWall installation

Using advanced streaming technology, SignWall is capable of streaming live video feeds from IP and CCTV cameras. With video surveillance, it is critical that the video be real-time and up to date. SignWalls powerful processor can stream up to 4 sources simultaneously. Of course, if you have other input devices such as HDMI players or PCs, they can be captured and displayed as well. One of the greatest advantages of the SignWall technology is that it can be monitored and controlled remotely. SignWall allows you to not only create a powerful digital signage experience, but to monitor it as well.



Keep an eye on your video wall installation

Using a high-resolution digital camera, SignWatchPro monitors the digital signage installation and reports back with images and video. It can display a live video or it can be scheduled to periodically take still images and video throughout the day. The images and video are accessible anywhere in the world via the internet. They can be sent to an ftp server, via SMS to a phone, or via email.

1080P HDMI CAPTURE



Video Wall Displays



Blu-Ray Player

HDMI



SignWall

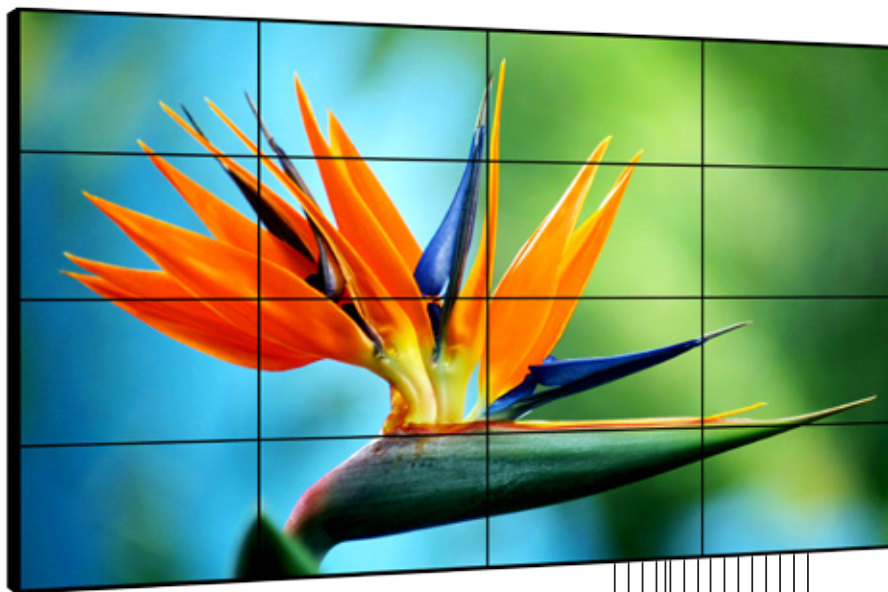
Capture and Display 1080p High-Definition HDMI Video in Real-time

SignWall is capable of capturing 1080p HD video in real-time and displaying it in any configuration you choose. This feature makes it easy for someone to play a video on the SignWall without having to capture the video ahead of time, eliminating the need to convert video into bulky files. If you need to quickly play a video, just connect your HDMI compatible player to the SignWall's HDMI capture port and play your video. You can choose to play it on one screen or to stretch the video on all four screens as shown above.

VIDEO WALL SYNCHRONIZATION

SignWall players can be synchronized to form a video wall up to 4X4

At the core of the SignWall system is advanced video synchronization technology. This gives you the power to create a video wall up to 4X4 that supports output locking of video playback. That means you can play a single video that is powered by 4 separate processors, making it the most stable, precise and smooth output possible.



4X4 Video Wall Configuration

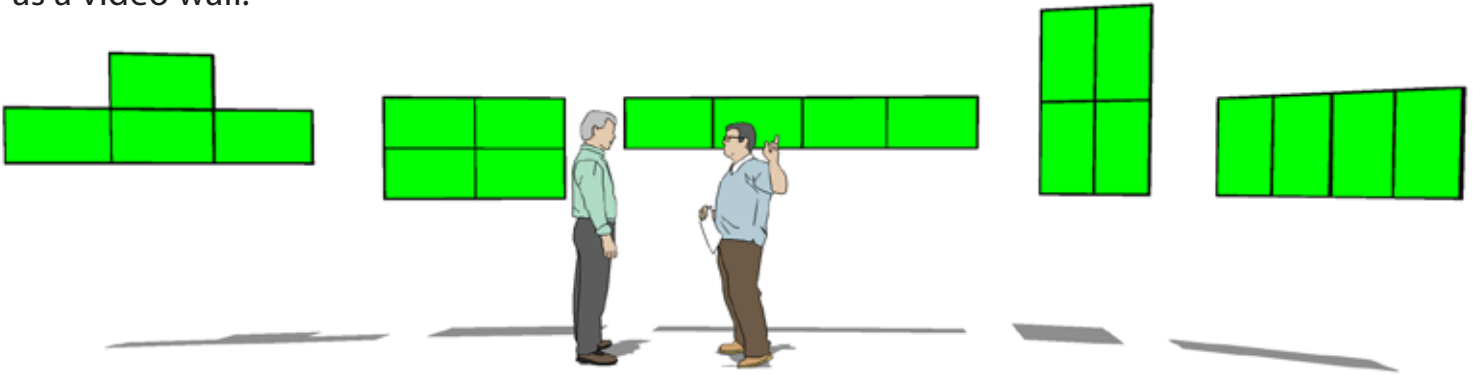
Using synchronization over a simple IP network, up to 4 SignWall processors may be linked to play in concert. The advantage of distributed processing is that the load of video playback is divided amongst the processors. This ensures that the video playback will be absolutely real-time with no jaggies or lag. With SignWall, you can be sure that your video is displayed with perfect clarity and precision.



SignWall is powered by Windows 7 on a blazing fast Intel Core i5 or Core i7 processor with 4GB of RAM and a Solid State Drive (SSD). This combined with a VisionTek AMD Radeon™ HD 5570 1GB SFF 4-Port DVI-D video processor gives SignWall the power to display seamless full HD 1920x1200 video on 4 displays.

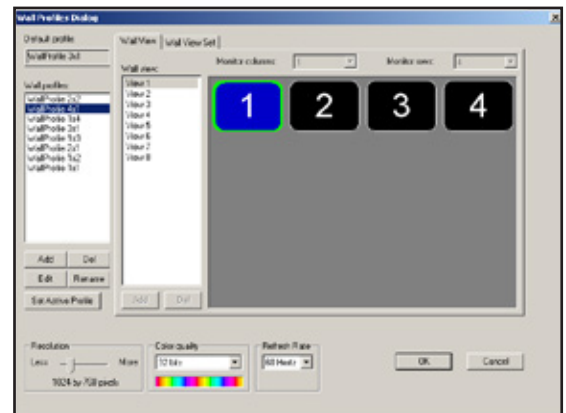
CONFIGURE YOUR DISPLAYS

SignWall supports up to 4 displays that can be configured in a number of different ways. Each display can be configured to have unique content or the displays can be used together as a video wall.

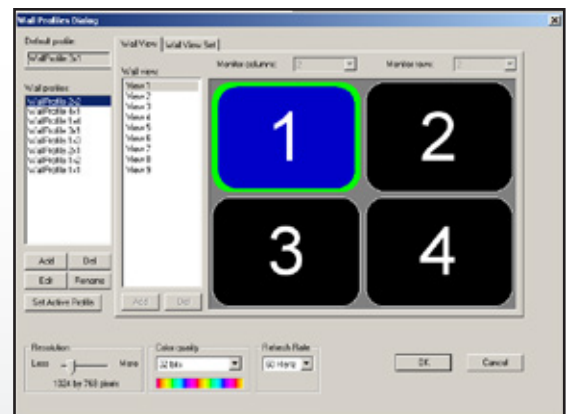


CHOOSE YOUR DISPLAY CONFIGURATION

- SignWall offers several different display configurations. From 4x1 (shown on right) to 2x2, 1x4, 3x1, 1x3, 2x1, 1x2 and 1x1.
- Choosing the right configuration for your digital menu board is simple with SignWall's profile management interface.



- Individual SignWall players can be configured to use up to 4 displays as a single video wall. This is an example of a 2X2 video wall:



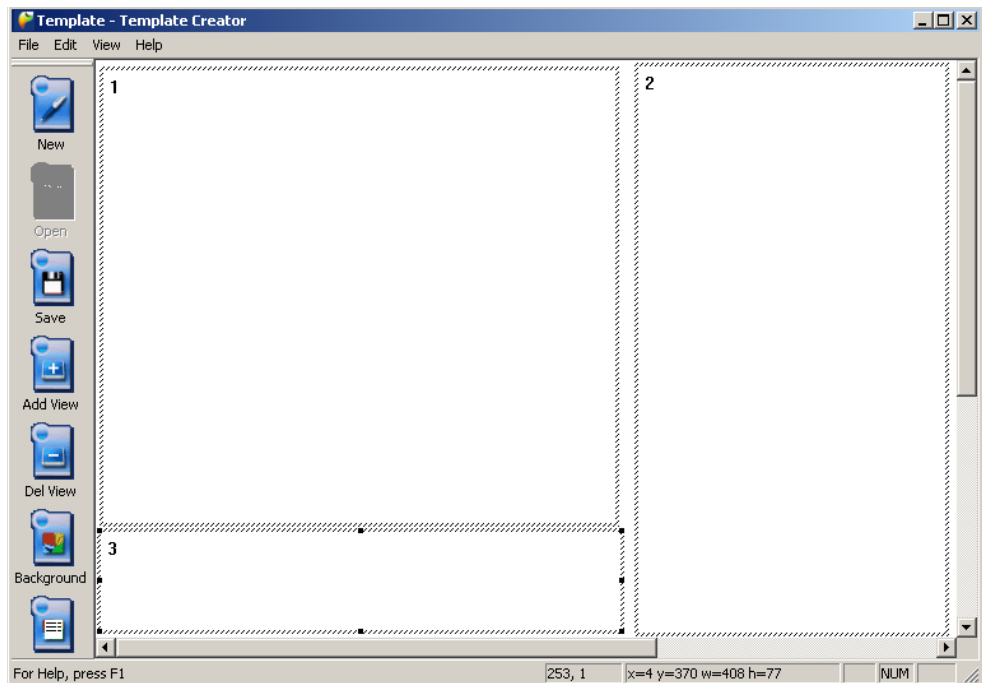
CREATE CONTENT ZONES



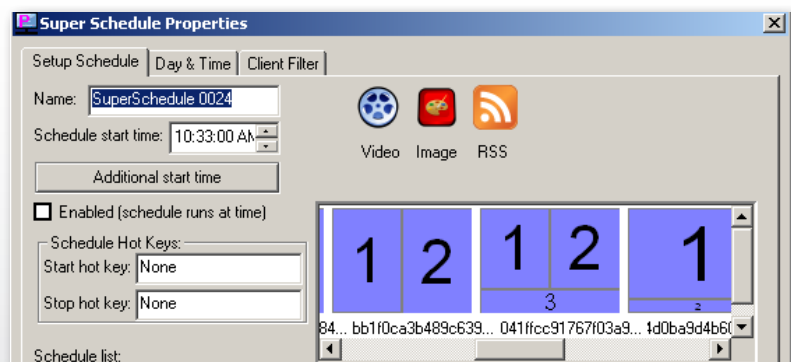
205 Westwood Ave, Long Branch, NJ 07740
Phone: 866-94 BOARDS (26273) / (732)-222-1511
Fax: (732)-222-7088 | E-mail: sales@touchboards.com

DIVIDE UP YOUR DISPLAYS WITH ZONES

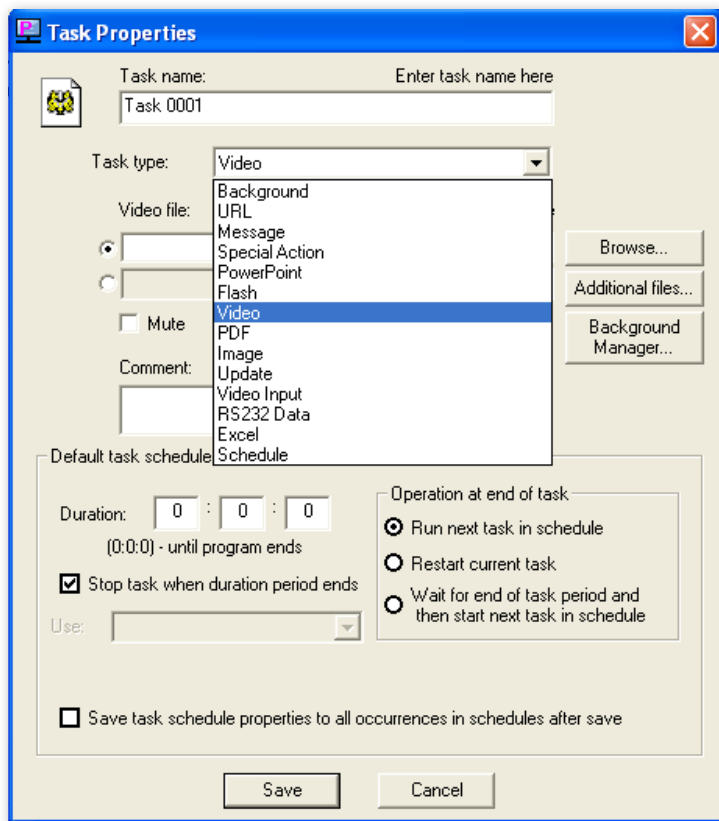
- Each display can be divided into customizable zones with the included template creator software.
- Each zone can contain different a mix of several different media types including video, images, RSS feeds and more.



- SignWall includes several pre-loaded templates with multiple customizable zones.
- Simply choose one of the available templates and then add your content.



ADD CONTENT TO ZONES



ADD YOUR MENU ITEMS AS TASKS

Tasks are individual files such as video, images, RSS feeds, flash movies, powerpoint presentations and more. The SignWall Task Manager allows you to create tasks for each menu zone. A task is simply a file that you will later assign to each of your menu zones. You can define the date, time, and duration for all of your Tasks. Tasks can be saved to the hard drive for later use.



SUPPORTED FORMATS



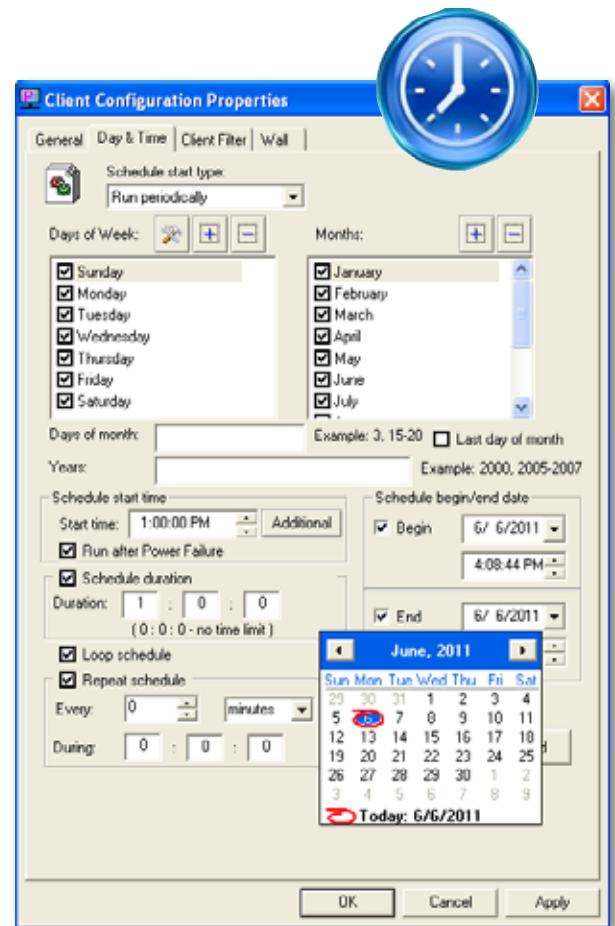
Bundled Software with No Recurring Fees!

SignWall comes with software that is simple to use and has the power to create a fully customized digital menu board system. SignWall's software package has ***no recurring fees!***

SCHEDULE CONTENT CHANGES

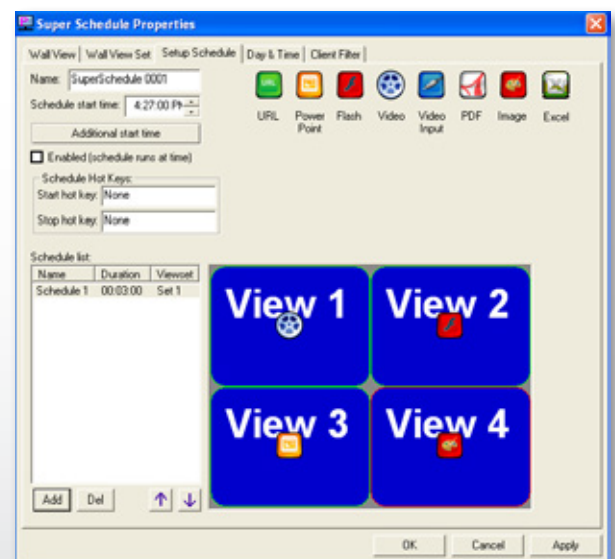
SCHEDULE YOUR CONTENT CHANGES

- SignWall's powerful scheduling software makes it easy to change menu items throughout the day.
- Scheduling can be set for specific days of the year such as holidays and special events.
- Individual tasks may be given a duration and the option to repeat.
- Schedules can be managed from anywhere in the world via the SignWall Manager software.



SUPER SCHEDULE FOR QUICK CHANGES

- Super Schedules are designed for making quick changes to the menu board. They allow you to create a variety of alternating screen layouts called virtual views.
- Virtual views are a 'what-you-see-is-what-you-get' method of managing menu content. These views can be saved for ease of access later.



Take control of your video wall network

SignWall can be managed with **SignWall Manager**, the included FREE software management tool with NO recurring fees. Multiple SignWall installations can be managed remotely. One PC – we'll call it the "server" – can operate as many digital menu boards as you need at once, be it one or more than a thousand.



Deliver your content to thousands of locations around the world

Using the power of the Internet to deliver content anywhere in the world, SignWall can be managed via local network or the Internet. It can be programmed and initiated from your own PC, be it a laptop or desktop computer in your home or office.

SignWall can be turned on, restarted or shutdown remotely via the SignWall management software. If you have multiple SignWall players, they can be synchronized to display the same content at the same time.

With the SignWall management software, controlling your video wall installation is simple.

Keep track of all your Digital Signage delivery

- See what is currently being played across the network.
- Create reports for a history of what has been played.
- Export reports in plain text or Microsoft Excel format.



Save Energy with SignWall's RS232 Control

SignWall has built-in RS232 control that allows you to control your signage hardware. For example, if a signage display is only used during the day, SignWall can schedule your display to turn off at night to save power. Statistics show that energy costs can be cut in half simply by turning off a display while not in use.

SPECIFICATIONS

SYSTEM SPECIFICATIONS	
Motherboard	Intel BOXDP67DEB3 LGA 1155 Intel P67 SATA 6Gb/s USB 3.0 Micro ATX Intel Motherboard
Processor	Intel Core i5-2400 Sandy Bridge 3.1GHz (3.4GHz Turbo Boost) LGA 1155 95W Quad-Core Desktop Processor OR Intel Core i7-2600 Sandy Bridge 3.4GHz (3.8GHz Turbo Boost) LGA 1155 95W Quad-Core Desktop Processor
RAM	G.SKILL Ripjaws X Series 4GB (2 x 2GB) 240-Pin DDR3 SDRAM DDR3 1333 (PC3 10666) Desktop Memory
Storage	SanDisk Ultra SDSSDH-120G-G25 2.5" 120GB SATA II Internal Solid State Drive (SSD)
Video	Intel HD Graphics 2000 PCI-E 4-Port DVI-D
Operating System	Windows 7
SUPPORTED FORMATS	
Image	JPG, GIF, Animated GIF
Video	AVI, WMV9, MPEG-2 PS, MPEG-1, MPEG-2 MP@ML, MPEG-4.2 ASP, MPEG-4.10/H.264, MP@L3.0,
Audio	MPEG-1 Layer I, II, MPEG-4 AAC
Other	Excel, Powerpoint, PDF, HTML, Flash, Quicktime, RSS
VIDEO INTERFACE	
Resolution	Up to 1920 x 1200 @60Hz
Connector	(4) DVI-D
AUDIO INTERFACE	
Connector	Stereo 3.5mm Female, SPDIF
OTHER INTERFACES	
USB	(2) USB 2.0, (2) USB 3.0
Firewire	IEEE 1394a
Power	Internal 100-240 VAC, 50-60 HZ, 60 Watts
Network	RJ-45 Gigabit
ENVIRONMENTAL	
* Operating temperature: 35° F to 96° F	
* Storage temperature: -20° F to 140° F	
Dimensions	17"W x 3.5"(2U)H x 15"D
WARRANTY	
1 Year	

ORDERING INFORMATION	
Part No.	Description
AP-SVW-120G55	SignWall Video Wall Player with 120GB Disk, 4GB RAM, i5. Includes: [AP-SVW-120G5 & CCPWR06]

Many leading companies have recognized and embraced the innovation of SmartAVI's technologies and have successfully incorporated them into their organizations. Clients of SmartAVI include:



SmartAVI, Inc. / Twitter: smartavi - 11651 Vanowen St. North Hollywood, CA 91605
 Tel: (818) 503-6200 Fax: (818) 503-6208 - <http://www.SmartAVI.com>

Smart-AVI
 SMART AUDIO VIDEO INNOVATION



Made in the USA

www.smartavi.com