

Is Your  
**NETWORK**  
Ready for **10G?**

FIBER • WIFI  
**NETXPERT**  
COPPER XG2



Let's  
**TEST IT.**

MADE IN  
**USA**

The First 10Gig Speed Certifier for Copper & Fiber with Wi-Fi Network Testing

**PLATINUM**  
**TOOLS**



# The Solution

## 10G SPEED CERTIFICATION

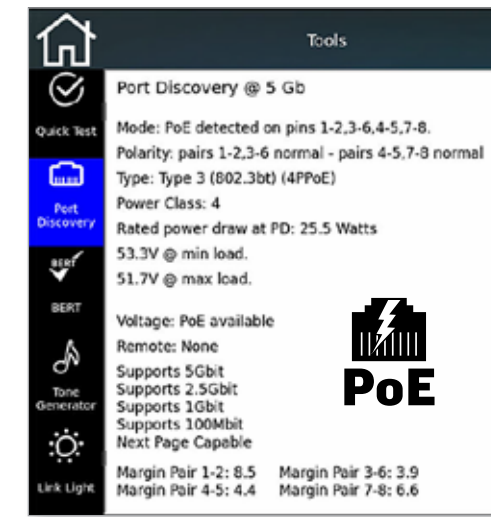
The NetXpert XG2 can certify copper or fiber networks to 10G speeds using advanced Bit Error Rate Testing (BERT), pushing real data packets over the cable and measuring the results. This is real world testing, which proves the capabilities of new networks and helps to identify those older cable runs that can operate at higher speeds.

- 10G speed testing of new copper & fiber installs
- 10G proofing of existing Cat5e & 6 cable runs
- Cable qualification to 1/2.5/5/10G standards



## 90W PoE++ TESTING

The NetXpert XG2 will test for PoE up to 90W, and displays load, current and voltage, as well as detecting PoE type, power class, polarity, and wire mapping, while also checking ethernet speeds.



## PDF, CSV, or XML DETAILED REPORTING

The NetXpert XG2 can produce detailed reports in PDF, CSV, or XML format to share with clients. Easily move reports from the unit to your computer via USB cable or thumbdrive for editing or emailing.

- Customize the reports with your logo and contact information



- Video Conferencing
- Wi-Fi Access Points
- High Resolution CCTV
- Video Streaming

Demand for data bandwidth increases about 30% per year and older Cat5e and Cat6 systems now struggle to keep up. Cat6A can handle the traffic, but it creates new issues with cost and difficulty of installation. Further, some - but not all - Cat5E & Cat6 systems can handle the higher speeds, but how do you identify which ones?

# NETXPERT XG2

FIBER • WIFI  
COPPER

10G Ethernet Speed Certification  
Active Network and PoE Testing

## Key Features

- Full color 7" touchscreen is bright and easy to read under any conditions
- Convenient form factor with built-in kickstand and safety hand straps for easy and safe one-hand use
- Rechargeable lithium/ion battery pack with optional high-energy upgrade or test while charging via AC
- Easy software updating over Wi-Fi or USB cable for future features
- Built-in VNC server allows remote control from any computer, tablet or phone on the same Wi-Fi network

## Interface Panel



- AC/Recharging port
- USB A port for cable, thumbdrive, or dongle
- Field-replaceable RJ45
- Dual SFP+ ports for any type of optical interface

## Active Remote



Used when testing copper cable, test can be started from the remote and pass/fail is indicated via LED.



## Durable Design

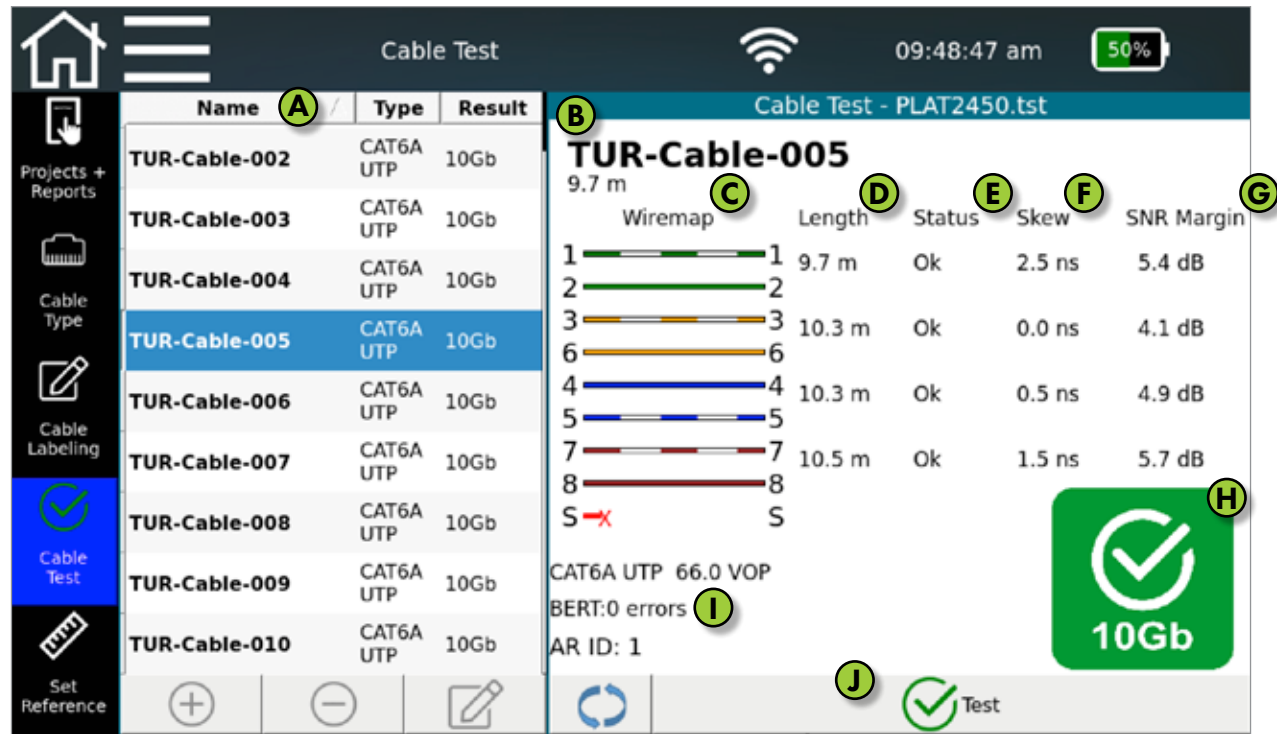
Rubber cover seals interfaces from dust and moisture while armored housing protects against drops & bumps

Removable, adjustable hand straps provide a firm grip on the XG2

Rubber feet resist skidding when using the XG2's built-in kickstand

Unit Shown Actual Size

# COPPER CABLE TESTING



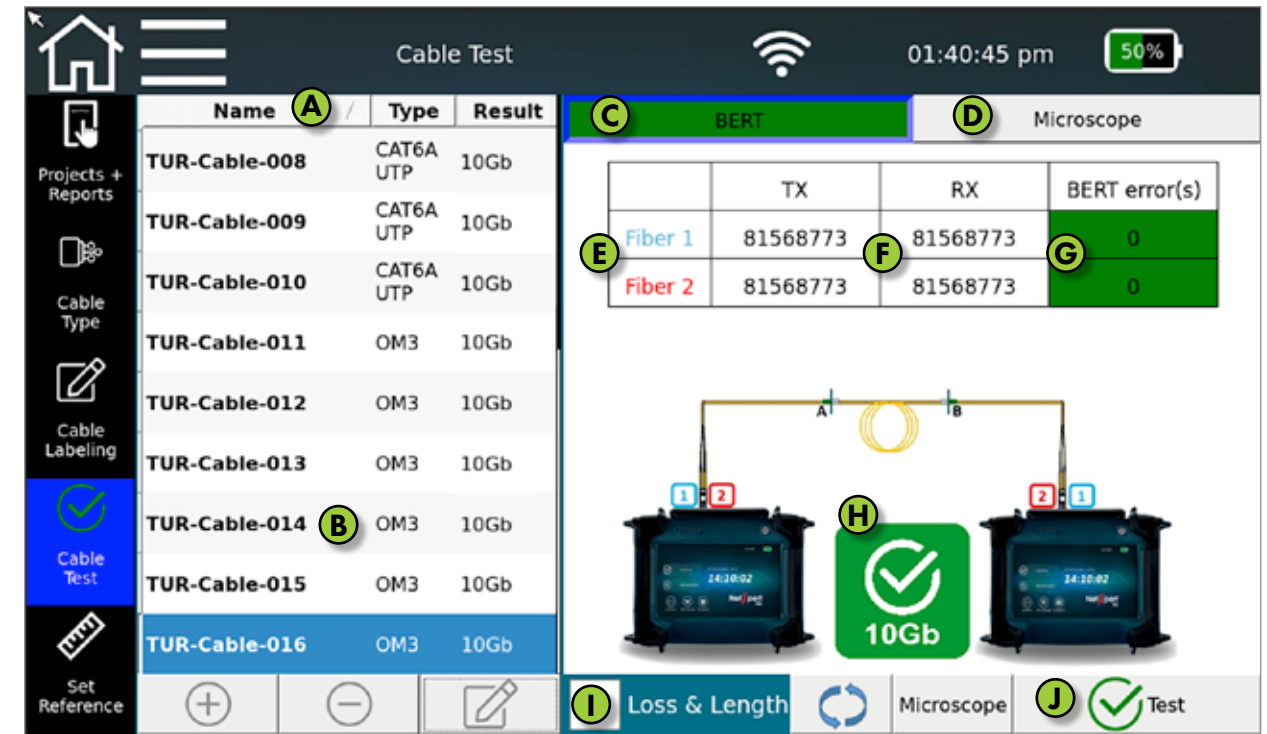
The core functions of the NetXpert XG2 are viewed from a single screen, with one press starting many tests

- A** List of all cables tested (or to be tested) is in the left column. Add, delete, or edit cables from here.
- B** Custom cable naming is standard, and the XG2 will automatically increment the cable number.
- C** Wiremap displays opens, shorts and miswires, making cable problem troubleshooting easy.
- D** TDR cable length measurement provides highly accurate results, including distance to shorts.
- E** Basic pass/fail cable status indicates whether cable complies with IEEE specifications.
- F** Skew test confirms signal delay between the pairs is within acceptable limits (< 20 ns).
- G** SNR Margin confirms that noise and crosstalk are within acceptable limits (higher is better).
- H** Bold speed test pass/fail icon makes it easy to quickly verify the expected test result.
- I** Bit Error Rate Test (BERT) displays transmission errors which rob connections of speed.
- J** **All of these tests are started with a single press of this button.**

## One Screen to Troubleshoot Most Copper Cable Problems

- The Wiremap graphical display allows quick visual identification of opens, miswires and shorts
- TDR Length Measurement makes it easy to identify where problems are - along the cable run or at a termination
- High Skew values can introduce errors into a system and degrade performance, especially with video transmission
- Performance-robbing bit errors are often caused by noise, and a low SNR Ratio indicates interference in the cable

# FIBER CABLE TESTING



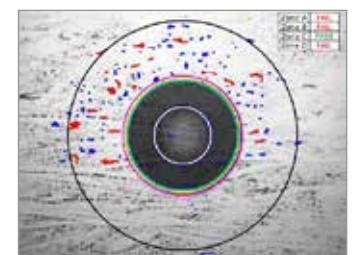
Fiber cable testing requires two NetXpert XG2 units, available at a special price in our #TXG200-FO Kit

- A** List of all cables tested (or to be tested) is in the left column. Add, delete, or edit cables from here.
- B** Custom cable naming is standard, and the XG2 will automatically increment the cable number.
- C** Bit Error Rate Test (BERT) displays transmission errors which rob connections of speed.
- D** Fiber inspection microscope attaches via USB and displays image on screen (*scope not included*).
- E** NetXpert XG2 tests both sides of duplex fiber cable simultaneously, saving time.
- F** Number of actual data packets transmitted and received during the BERT test is displayed.
- G** Number of BERT errors is displayed and highlighted for quick and easy reference.
- H** Bold speed test pass/fail icon makes it easy to quickly verify the expected test result.
- I** Loss & Length measurement displays cable length and transmission loss over that distance.
- J** **All of these tests are started with a single press of this button.**

## LiveLight and Microscope Inspection Solve Most Fiber Cable Problems



Dirt and debris, bad cable routing, or bad terminations all cause signal loss. LiveLight shows this loss in real time, while microscope inspection clearly shows where cleaning is needed to resolve many connectivity issues.



Contact us for compatible microscope models

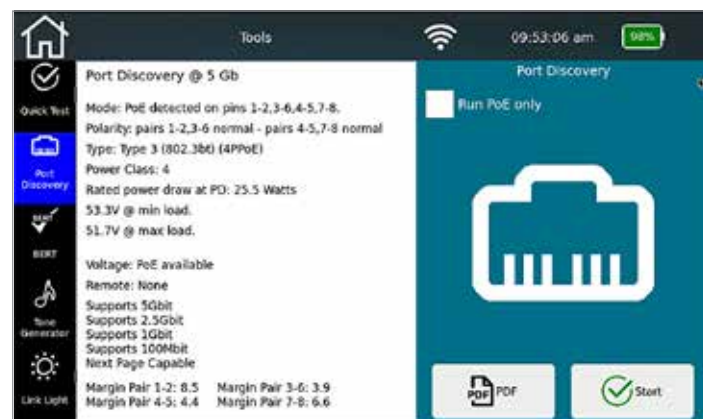
# NETXPERT XG2

FIBER • WIFI  
COPPER

## One Device to Handle All Your Most Common Testing Needs

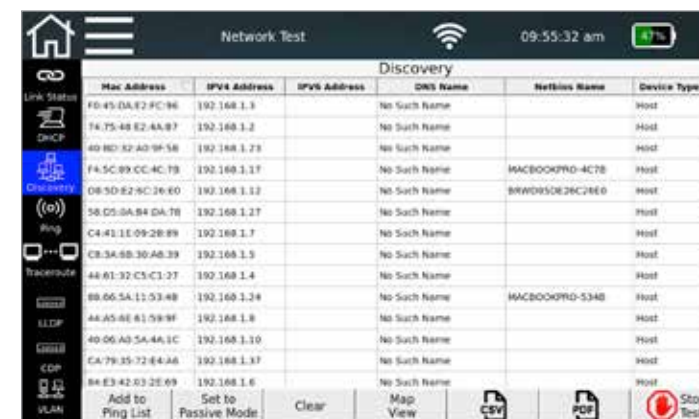
The NetXpert XG2 is far more than just a 10G ethernet speed certifier and cable tester. The unit is equipped with a full suite of active network tests and tools to speed network installs.

### PoE & PORT DETECTION



The NetXpert XG2 will test for PoE up to 90W, and displays load, current and voltage, as well as detecting PoE class

### NETWORK MAPPING



Display a complete network map in graphical or list view - makes it easy to discover network issues like duplicate IPs

### CDP/LLDP PORT DISCOVERY



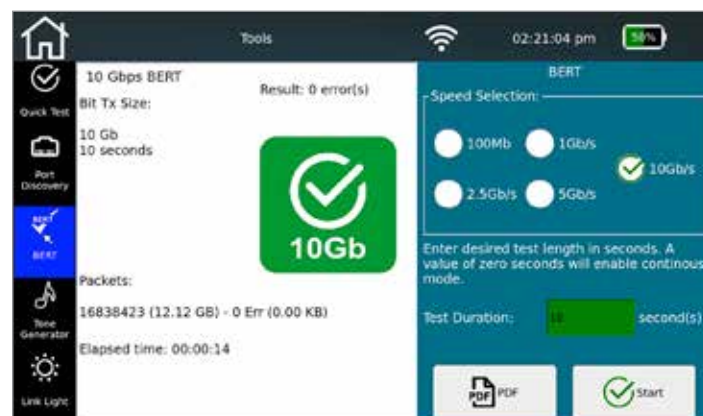
Detects Cisco Discovery Protocol (CDP) or Link Layer Discovery Protocol (LLDP) and displays information from the switch.

### WI-FI SIGNAL TESTING



The NetXpert XG2's built-in Wi-Fi detects all networks in range and displays actual signal strength at its location

### CONTINUOUS BERT TESTING



Stress test a network at multiple speeds up to 10Gb with a continuous BERT test of a pre-set duration

### LIVELIGHT FIBER PERFORMANCE



The NetXpert XG2's exclusive LiveLight feature displays fiber signal performance in real time to evaluate cable routing

### STONE GENERATION



Advanced tone generation over a single pair or all pairs with multiple tone choices for fast, easy cable tracing with a probe

### ezEX-RJ45 CONNECTORS

10G performance in a pass-through style RJ45, with an improved crimp tool that trims perfectly flush. (see website for p/n listing)



### PING TESTING



Ping any URL or IP for connectivity testing and perform up to six ping tests simultaneously on the network or internet

### PEN-STYLE CLEANERS

Our Pen-style Cleaners come in 1.25 and 2.50mm sizes and will clean most fiber ports and connectors. p/n FC125 & FC250



### VISUAL FAULT LOCATOR

Our VFL uses a 10mW laser to quickly identify faults or speed-robbing bends in most fiber optic cables

p/n TVFL100



### TONESEEKER

Our ToneSeeker™ probe detects the tone generated by the XG2 tester and allows for cable tracing with no metallic contact. The unit also features auto-off to save battery power.

p/n TP250C





## All NetXpert XG2 Testing Functions

### Copper Cable Testing

- Ethernet speed certification to 1/2.5/5/10G
- Cable qualification to 1/2.5/5/10G
- Pass/fail cable test results
- TDR Cable length measurement
- Distance to opens and shorts
- TIA568A/B wiremap testing
- Tone generator
- Custom cable labeling

### Active Network Testing

- Works with copper, fiber, or WiFi
- Ping to a specific IP or URL address
- Link light to identify location on a switch
- Verifies DHCP connectivity and DNS
- Discovers CDP and LLDP Protocols
- Network Mapping & Traceroute
- VLAN Discovery

### Fiber Optic Cable Testing\*

- Ethernet speed certification to 1/2.5/5/10G
- Cable qualification to 1/2.5/5/10G
- Pass/fail fiber cable test results
- Fiber cable length measurement
- Fiber loss measurement
- Livelight active transmission testing
- Optional microscope image testing

\*Fiber cable testing requires Fiber Optic Kit

### WiFi Testing

- Signal strength
- Internal, or external WiFi via a dongle

### PoE Testing

- Load, current and voltage
- PSE & PD class detection
- PoE cable pairs

**#TXG200 Basic Kit** • Includes XG2 Tester, Active Remote, 2 chargers, 2 patch cables, case  
Carrying Case Dims 17.75 x 13.00 x 5.00" (450 x 330 x 127mm) • Weight 8.5lb. (4Kg)

**#TXG200-FO Fiber Optic Test Kit** • Includes two XG2 Basic Kits as described above

**#TXGBATX High Energy Battery Kit** • 9000mAh battery increases life by 50%

## Specifications

Length Measurement	Time Domain Reflectometry
Output Connections	8- Position Shielded Modular Jack (Data) 2 x 10Gb SFP+ (Fiber)
Interfaces	USB Type A
Languages	EN, FR, ESP, DEU, ITA
Temperature	Operating: -10 to 60°C Storage: -20 to 50°C When Charging: 10 to 40°C
Humidity	10 to 90% non-condensing
Altitude	Operating: 10,000 Ft. (3,048m)
Power Supply	Input 100-240VAC, Output 12VDC 2.5A
Battery	Li-Ion, 7.8V 6000mAh - expected initial life 4hrs. typical at 1Gb speed
Enclosure	Rubber armored impact-resistant plastic
Size	Tester: 9.75 x 7 x 3" (245 x 177 x 73mm) Remote: 5.25 x 7 x 2.25" (130 x 177 x 55mm)
Weight	Tester: 2.65lbs. (1.2Kg) Remote: 1.3lbs. (0.6Kg)
Warranty	One Year
Compliance	CE

