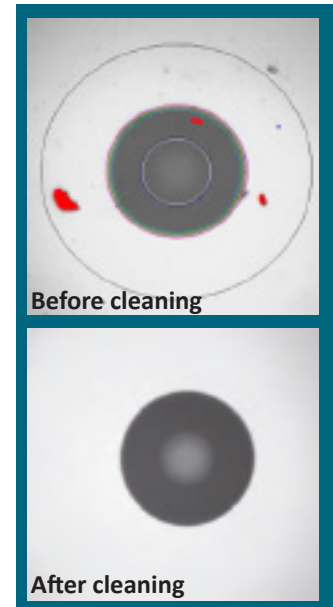


Fiber Microscope



Digital Fiber Microscope to inspect connector end-faces

Before testing fiber-optic links and every time fiber optic connectors are mated, connector end-faces should be inspected and evaluated to avoid contamination that can cause degradation of network performance and destructive damage in the contact zone. The new fiber microscope provides for a quick and easy inspection of connector end-faces and an automated "Pass/Fail" analysis compliant with IEC 61300-3-35.

The microscope is easily connected via USB with WireXpert as well as FiberXpert and the evaluation of connector end-faces can be added to the test reports.

Features

- Connector end-face evaluation at the touch of a button
- Automated analysis compliant with IEC 61300-3-35
- Ease of use and quick analysis
- Adapters for the most common fiber-optic connectors are included



Fiber Microscope

NORTH AMERICA & CANADA

Softing Inc.
Knoxville, Tennessee
Phone: +1.865.251.5252
E-mail: sales@softing.us

ASIA/PACIFIC

Singapore
Softing Singapore Pte. Ltd.
Singapore
Phone: +65-6569-6019
E-mail: asia-sales.itnetworks@softing.com

China

Softing Shanghai
Shanghai
Phone: +86-21-54133123
E-mail: china-sales.itnetworks@softing.com

EUROPE/MIDDLE EAST/AFRICA

Germany

Softing IT Networks GmbH
Haar, Munich
Phone: +49 89 45 656 660
E-mail: info.itnetworks@softing.com

France

Softing SARL
Créteil, Île-de-France
Phone: +33145172805
E-mail: info.france@softing.com

Italy

Softing Italia Srl.
Cesano Boscone, Milano
Phone: +39 02 4505171
E-mail: info@softingitalia.it

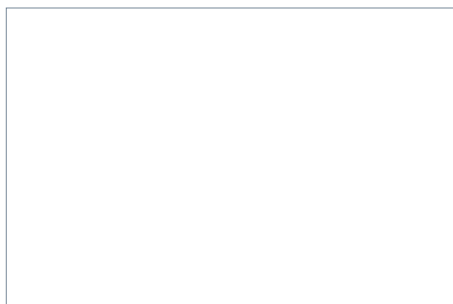
Austria

Buxbaum Automation GmbH
Eisenstadt
Phone: +43 2682 7045 60
E-mail: office@myautomation.at

For technical information and support please contact the Softing office in your country.

<https://itnetworks.softing.com>

For more information please contact:



©2017 Softing IT Networks. In line with our policy of continuous improvement and feature enhancement, product specifications are subject to change without notice. All rights reserved. Softing and the Softing Logo are trademarks or registered trademarks of Softing AG. All other trademarks, registered or unregistered, are sole property of their respective owners.

Physical Characteristics	
Weight	0.110 g (3.88oz)
Dimensions	(w × h × d) 140x46x44 mm (5,5x1,8.x1.7 in)
General specifications	
General Technical	(typical at 25°C)
Low mag field-of-view (FOV)	Horizontal: 740 μm Vertical: 550 μm
High mag field-of-view (FOC)	Horizontal: 370 μm Vertical: 275 μm
Live image	640 x 480 fps
Connector	USB 2.0 (backwards compatible to USB 1.1)
Camera sensor	2560 x 1920, 1/2.5-in CMOS
Particle size detection	<1 μm
Light source	Blue LED, 100,000+ hour life
Accuracy	±1 m ± 10 ⁻⁵ x distance ± sampling resolution (excluding group index uncertainties)
Lighting technique	Coaxial
Power source	USB Port

Product	Part Number	Item Description
Digital Fiber Inspection Kit	WX_FX_INSP_KIT	Digital microscope with USB connection to WX4500 and tips for SC/FC/LC/ U1211/U2511 connectors
Adapter FC/PC tip	WX_FX_INSP_FCPC	FC/PC tip for Digital Fiber inspection kit
Adapter FC/APC	WX_FX_INSP_FCAPC	FC/APC tip for Digital Fiber inspection kit
Adapter LC/PC tip	WX_FX_INSP_LCPC	LC/PC tip for Digital Fiber inspection kit
Adapter LC/PC tip Long Reach	WX_FX_INSP_LCPC_L	LC/PC tip for Digital Fiber inspection kit - Long Reach
Adapter LC/APC tip Long Reach	WX_FX_INSP_LCAPC_L	LC/APC tip for Digital Fiber in spection kit - Long Reach
Adapter SC/PC tip	WX_FX_INSP_SCPC	SC/PC tip for Digital Fiber inspection kit
Adapter SC/APC tip	WX_FX_INSP_SCAPC	SC/APC tip for Digital Fiber inspection kit
Adapter ST tip	WX_FX_INSP_ST	ST tip for Digital Fiber inspection kit
Adapter 1.25mm Patchcd PC	WX_FX_INSP_125PC	1.25mm Patchcord PC
Adapter 1.25mm Patchcd APC	WX_FX_INSP_125APC	1.25mm Patchcord APC
Adapter 2.5mm Patchcd PC	WX_FX_INSP_25PC	2.5mm Patchcord PC
Adapter 2.5mm Patchcd APC	WX_FX_INSP_25APC	2.5mm Patchcord APC