

North America & Canada

Softing Inc.
Knoxville, Tennessee
Tel.: +1.865.251.5252
E-Mail: sales@softing.us

Asia/Pacific

Singapore
Softing Singapore Pte. Ltd.
Singapur
Tel.: +65-6569-6019
E-Mail: asia-sales.itnetworks@softing.com

China
Softing Shanghai
Shanghai
Tel.: +86-21-54133123
E-Mail: china-sales.itnetworks@softing.com

Europe/Middle East/Africa

Germany
Softing IT Networks GmbH
Haar, München
Tel.: +49 89 45 656 660
E-Mail: info.itnetworks@softing.com

France
Softing SARL
Créteil, Île-de-France
Tel.: +33 1 45 17 28 05
E-Mail: info.france@softing.com

Italy
Softing Italia Srl.
Cesano Boscone, Mailand
Tel.: +39 02 4505171
E-Mail: info@softingitalia.it

Austria
Buxbaum Automation GmbH
Eisenstadt
Tel.: +43 2682 7045 60
E-Mail: office@myautomation.at

For technical information and support please contact the Softing Office in your country.

<http://itnetworks.softing.com>

optimize!
softing

Wire **X**pert

WX-4500

Fiber Test Adapters Kits

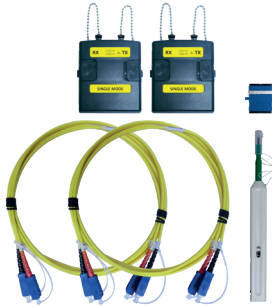


IT Networks

Quick Start Guide

v7.2,build #424

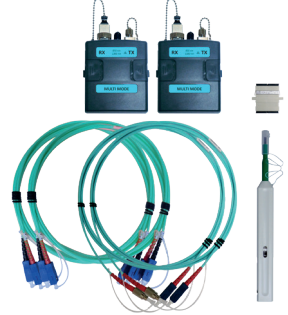
WIREXPERT



**Single-Mode Adapter Kit
(WX_AD_SM2)**



**Multi-Mode Adapter Kit
(WX_AD_VCL_MM2)**



**Encircled Flux
Compliant Multi-Mode
Adapter Kit
(WX_AD_EF_MM2)**

KIT CONTENTS

Single-Mode Adapter Kit (WX_AD_SM2)

- A pair of Single-mode adapters with source wavelength of 1310/1550nm
- A pair of 9/125um SC-SC duplex test cords (2m)
- Single SC-SC coupler
- Single one-click SC cleaning kit

Multi-Mode Adapter Kit (WX_AD_VCL_MM2)

- A pair of Multi-mode adapters with source wavelength of 850/1300nm
- A pair of 50/125um SC-SC duplex test cords (2m)
- A pair of mandrels
- Single SC-SC coupler
- Single one-click SC cleaning kit

Encircled Flux Compliant Multi-Mode Adapter Kit (WX_AD_EF_MM2)

- A pair of Multi-mode adapters with source wavelength of 850/1300nm
- A pair of modally transparent 50/125um FC-SC simplex test cords (2m)
- A pair of 50/125um SC-SC simplex test cords (2m)
- Single SC-SC coupler
- Single one-click SC cleaning kit

WIREXPERT

	Single Mode (SM)	Multi Mode (MM)	Encircled Flux MM (MMEF)
Wavelength	1310nm, 1550nm	850nm, 1300nm	
Connector Type	1. SC 2. LC (Optional)	1. SC 2. LC (Optional)	1. SC-SC + FC-SC 2. LC-SC + FC-SC (Optional)
Test Standards	TIA 568 C.3 IEC 14763-3	TIA 568 C.3 IEC 14763-3	TIA 568 C.3 IEC 14763-3 IEC 61280-4-1
Test Parameters			
Loss	0 to 31 dB, ± 0.2 dB		0 to 24 dB, ± 0.2 dB
Length	0 to 20,000m, ± 1.5 m		0 to 2,000m, ± 1.5 m
Output Power	-5 to -9 dBm	-16 to -10 dBm	-16 to -20 dBm
Receiver Sensitivity	-40 dBm	-34 dBm	-40 dBm
VFL Wavelength	NA	NA	650 nm

GETTING STARTED



SETUP System Settings

SETUP

Device Settings

Length Uni	FT	M	
Device Type	n	L	R

Device Settings

Go to System Settings > Settings 1 to set default display measurement units or change LOCAL unit to REMOTE or vice versa.

Timing Settings

Sleep Interval(minutes)
Auto Power-off Interval(minutes)

Timing Settings

Go to System Settings > Settings 1 to set or disable interval before the devices enters sleep mode or shut down.

Sound Settings

Audio Settings

Sound Settings

Go to System Settings > Settings 1 to enable or disable audio related options and volume control.

Clock & Languages

Date & Time	>
Language	English >

Localisation Settings

Go to System Settings > Settings 2 to configure date & time and language settings.

Firmware

Upgrade Firmware	7.x >
------------------	-------

Upgrading device firmware

1. Import firmware with a USB flash drive from the latest version of eXport PC software.
2. Insert USB flash drive to WireXpert units.
3. Wait for upgrade option prompt.
4. Or go to System Settings > Settings 2 > Storage > USB icon > Upgrade Firmware

Export

Test Results	>
--------------	---

Exporting and importing files

1. Insert USB flash drive to the LOCAL unit.
2. Wait for USB options prompt.
3. Or go to System Settings > Settings 2 > Storage > USB icon
4. Select Test Results to export saved results to USB flash drive.
5. Select Label List to import labels generated from eXport PC software.

Import

Custom Limits	>
Label List	>

GETTING STARTED



SETUP Project Settings

SETUP

Site	Unspecified >
------	---------------

Site

Creates folder for AUTOTEST results to be saved into.

Operator	Unspecified >
----------	---------------

Operator

Creates display name for operator handling unit.

Label Source	Simple Label >
--------------	----------------

Label Source

Creates labeling scheme for saved AUTOTEST result.

Select NONE to manually enter AUTOTEST result label when saving.

Select LIST BASED TESTING for pre-configured labels created with eXport PC software.

AutoSave	<input type="checkbox"/>
----------	--------------------------

AutoSave

Enable option for WireXpert to auto save every PASS result. Option will be enabled for List Based Testing.

Next Label	A1 >
------------	------

Next Label

Displays label for the next AUTOTEST.

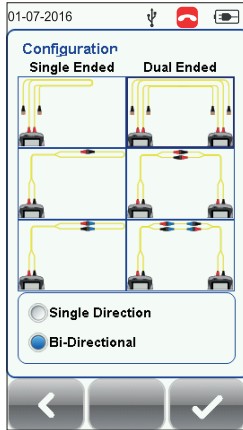
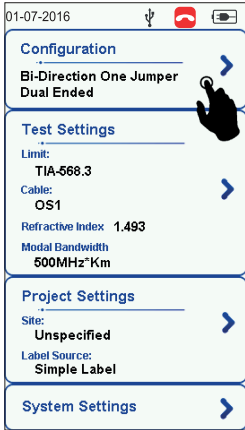
SETTING REFERENCE



SETUP Configuration

SETUP

Go to Configuration to determine how Set Reference and AUTOTEST will be performed.



1 Jumper reference

2 Jumpers reference

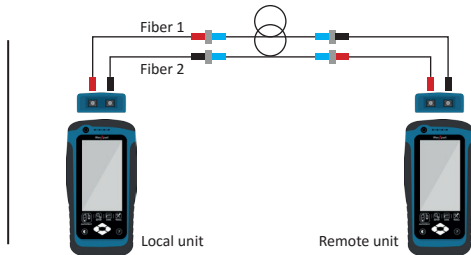
3 Jumpers reference

Note: According to the ISO/IEC standards, the 2-jumpers testing method is not compliant, hence the selection for 2-jumpers configuration will be disabled when an ISO limit is selected.

Single Ended / Dual Ended



Single Ended (Loopback)



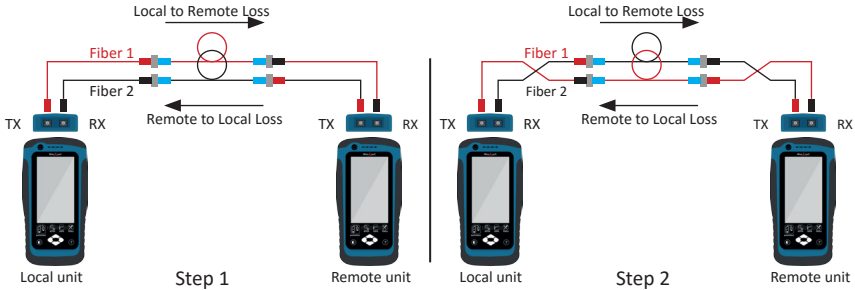
Dual-ended

Select Single Ended to conduct loop-back referencing and AUTOTEST with only the LOCAL unit.

Select Dual Ended to conduct end-to-end referencing and AUTOTEST with both LOCAL and REMOTE units.

SETTING REFERENCE

Single / Bi-Directional Testing

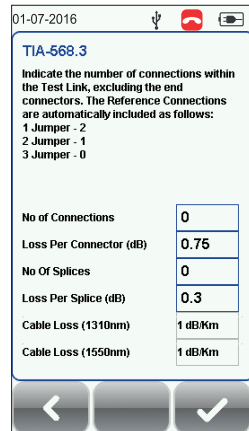
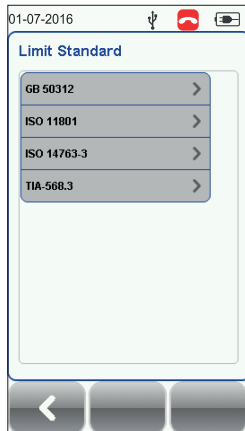
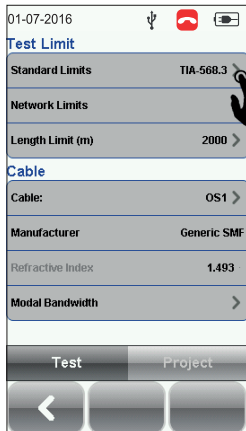


Select Single Direction for test to be conducted only from LOCAL TX to REMOTE RX on Fiber 1 and REMOTE TX to LOCAL RX on Fiber 2 (step 1).
 Select Bi-Direction for test to be conducted from LOCAL to REMOTE and REMOTE back to LOCAL on both Fiber 1 and Fiber 2. Swapping of connections during AUTOTEST is required (step 2).



SETUP
Test Settings

SETUP



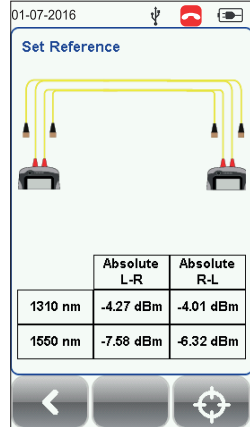
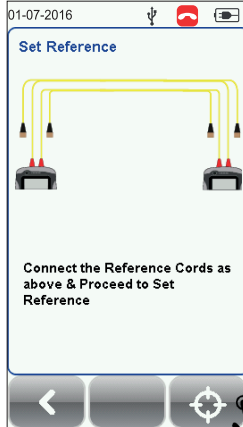
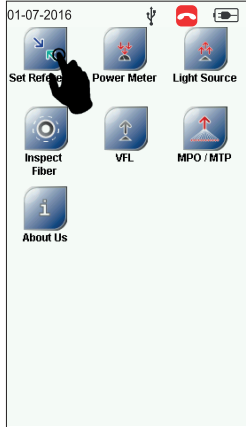
Go to Test Settings > Test Limits > Standard Limits to select test limit before performing Set Reference or AUTOTEST.
 Enter number of connectors and splices only if there are present in link under test. Connectors used during Set Reference and AUTOTEST are automatically included when selecting 1/2/3 Jumper reference.


SETTING REFERENCE



TOOLS
Set Reference

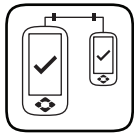
TOOLS



1. Clean the adapters and test cords with the cleaner provided in the kit.
2. Follow diagram on WireXpert to set up Set Reference using test cords provided in the kit.
3. Check that the units are connected. 
4. Click the Set Reference button.
5. Check the Set Reference values are between **-3 to -9 dBm** for both Single and Multi-mode and **-18 to -20 dBm** for Encircled Flux Multi-mode.
6. Perform verification test if performing 1 jumper reference method. Refer to User Manual for more information.

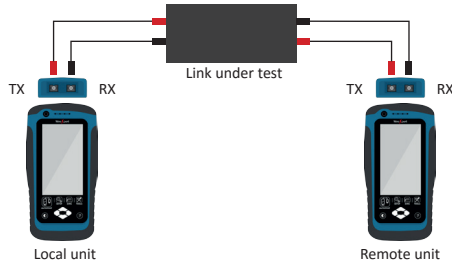
	Single Mode (SM)	Multi Mode (MM)	Encircled Flux MM (MMEF)
Set Reference	-3 to -9dBm		-18 to -20dBm
Verification Test	0.3dB	0.15dB	

PERFORMING AUTOTEST



AUTOTEST

AUTOTEST



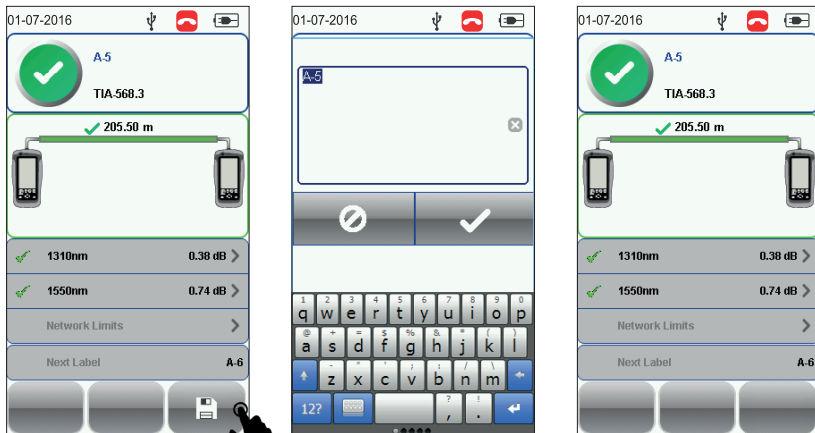
Connect one ends of test cord to WireXpert and other end to link under test on both LOCAL and REMOTE units.

Press the AUTOTEST button to perform a certification test.

Saving an AUTOTEST result

Test results can be manually saved by selecting the “Save” button.

Only PASS test results will be automatically saved when Autosave is enabled or in List Based Testing mode. FAIL results must be saved manually.



Note:

- Green “PASS” – Good test result in accordance to pre-defined settings
- Red “FAIL” – Unacceptable results with severe disturbance on one or more test parameters.

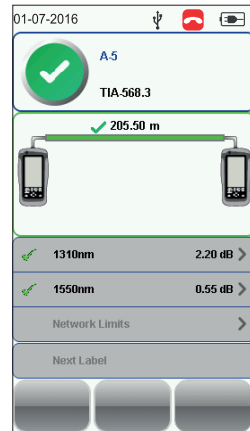
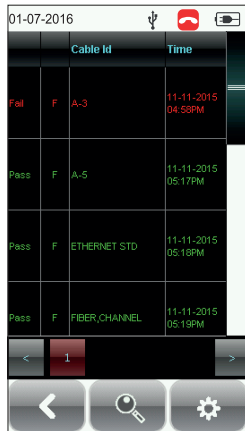
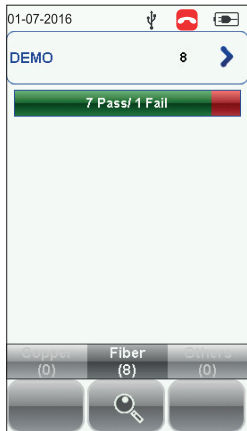
VIEWING A SAVED RESULT



DATA
Viewing Saved Results

DATA

Press the DATA button to view saved results. Select “Fiber” to view saved fiber test results. Copper and MPO saved results can be viewed when respective adapters are connected to WireXpert.



MANAGING A SAVED RESULT




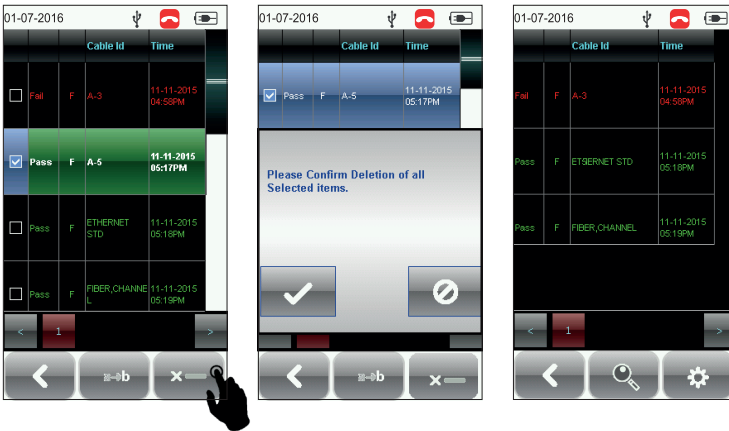
DATA

Renaming and Deleted Saved Results


DATA

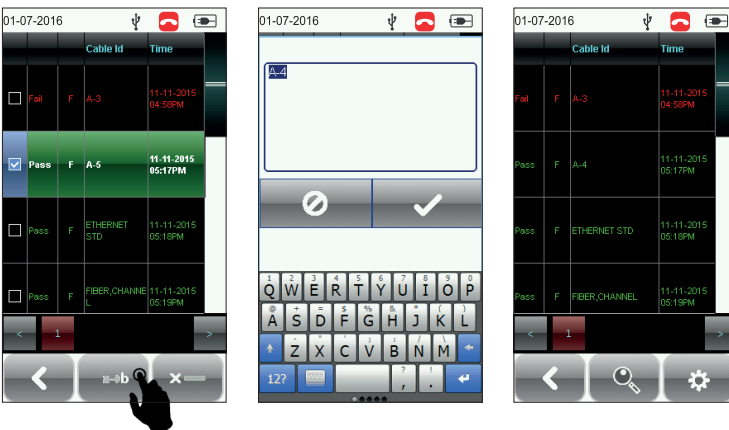
Deleting a saved result

1. Press the “DATA” button.
2. Select “Copper” or “Fiber” and press the “View” button.
3. Press the “Manage” button. 
4. Select result(s) and press the “Delete” to delete result(s).



Renaming a saved result

1. Press the “DATA” button.
2. Select “Copper” or “Fiber” and press the “View” button.
3. Press the “Manage” button. 
4. Select result and press the “Rename” to rename result.

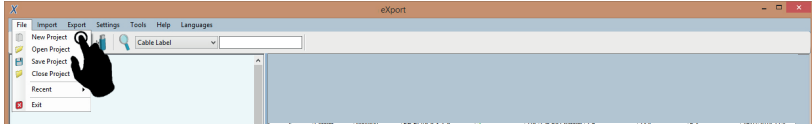


PC SOFTWARE

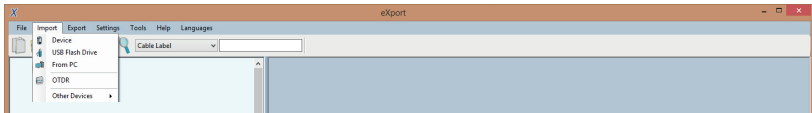
Using the eXport software



1. Launch eXport software.

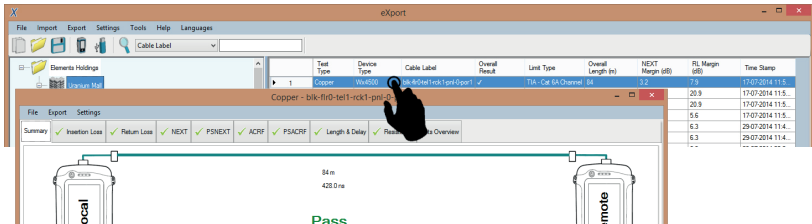
2. Create a new project by going to File > New Project or click 



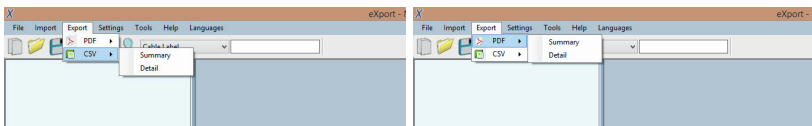
3. To import saved results, go to



- Import > Device for direct USB connection or click 
 - Import > USB Flash drive for importing from USB flash drives or click 
 - Import > From PC for importing from local hard drives
4. To view detailed results, double click on the cable label and a new window with comprehensive results and plots will be opened.



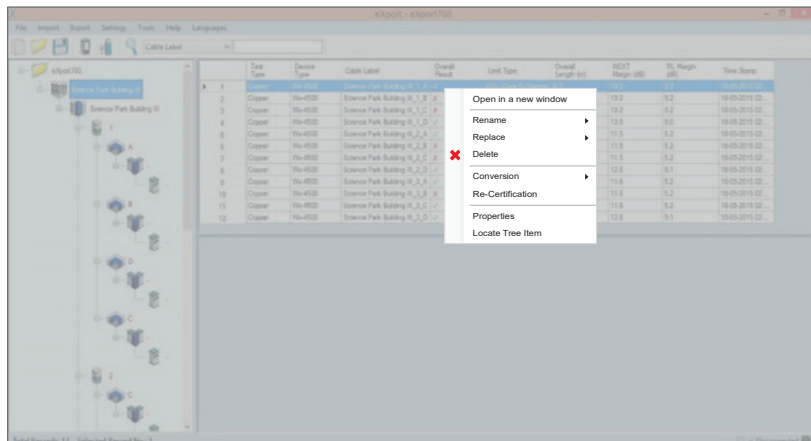
5. To export saved results, go to



- eXport > PDF to export selected test result(s) in summary or detail.
- eXport > CSV to export selected test result(s) in summary or detail.

PC SOFTWARE

Editing Information



1. To rename cable label or operator name on a single saved result, select and right click on a test result.

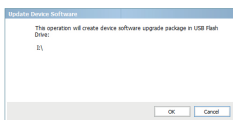
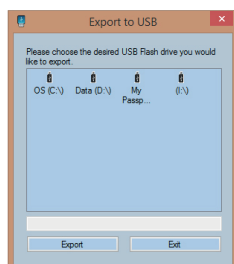
- Rename > Cable Label to rename label of the selected cable.
- Rename > Operator Name to rename the operator of the selected cable.

2. To replace cable label or operator on multiple saved results, select and right click on test results to perform operation on.

- Replace > Cable Label to replace text in labels of the selected cables.
- Replace > Operator Name to replace text in names on the selected cables.

Updating Device Software

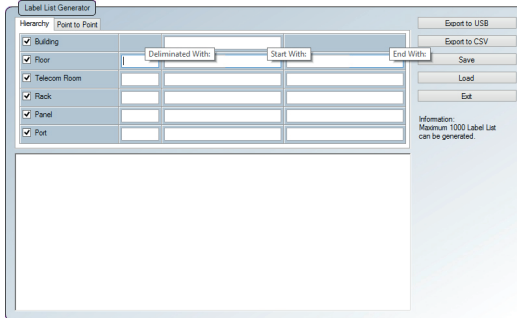
1. Insert USB drive to workstation.
2. Go to Tools > Update Device Software
3. Select USB drive and click "Export".
4. Click "OK" and wait for process to complete.



LIST BASED TESTING

LIST-BASED TESTING (LBT)

Generating hierarchical label list with eXport software



The Label List Generator generates cable labels in customizable hierarchical (building name-> floor-> telecom room-> rack-> panel-> port) order before conducting cable certifications, reducing effort from keying labels after every test. The pre-defined labels imported into the device will prevent duplicate testing when conducting in non-sequential orders.

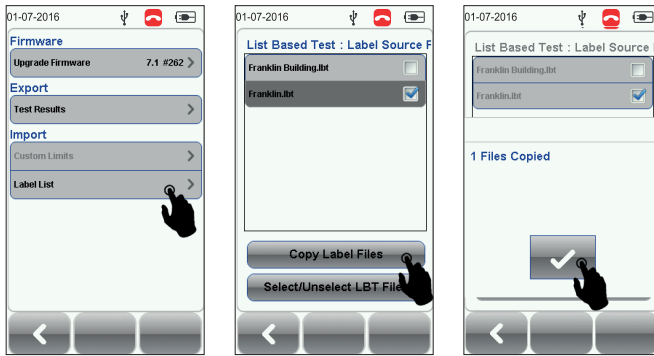
To create label list,

1. Launch eXport and go to Tools > Label List Generator.
2. Enter the first and last label of each tier into the respective fields.
3. Tiers can be disabled by unchecking if it is not applicable.
4. Click the “Save” button to save the list based labels.
5. Insert USB flash drive to PC and click the “Export to USB” to begin export.

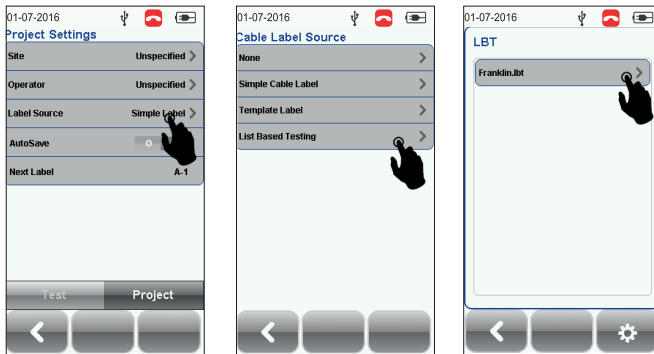
To load label list,

1. Insert USB flash drive to Local unit of WireXpert.
2. Select “Label List” and select the label list you want to import.
3. Select “Copy Label Files”.

LIST BASED TESTING



4. Press the "SETUP" button > Project Settings > Label Source
5. Select "List Based Testing" and select the label that has just been imported.
6. Press the AUTOTEST button to view list and select label for test.



A **PASS** or **FAIL** result will be indicated after every test.

