

## Precautions:

- Be sure to turn off any laser sources before inspecting any fiber connectors, optical components, or bulkheads.
- Always wear the appropriate safety glasses. Be sure laser safety glasses meet federal and state regulations and are matched to the lasers used in your environment.
- Never look into a fiber or bulkhead while the system lasers are on, and never connect a fiber to a fiberscope while the system lasers are on.
- Never touch the end face of the fiber connectors.



## Features & Benefits

- Cleans connections on backplanes and jumpers
- Superior for FTTh, FTTt, and FTTn
- Effective for the widest range of contaminants
- Easy to use for quick and reliable cleaning
- Rugged and durable, great for all work sites
- Designed for 1st time cleaning of up to 600 cleanings per kit

Sales: [sales@softing.us](mailto:sales@softing.us)  
 Support: [support@softing.us](mailto:support@softing.us)  
<https://itnetworks.softing.com/us/xpertclean/>

7209 Chapman Hwy  
 Knoxville, TN USA 37920  
 Tel: +1.865.251.5252  
 Fax: +1.865.579.4740

## CleanMachine

### XpertClean For Optimal Fiber Optic Cleaning

Softing products are designed for optimal cleaning of connectors using the XpertClean process. The last thing you want performance degradation due to a dirty fiber optic end face in the connector, or even worse, dust on one end face ground into the end face of the mating connector scratching the surface causing permanent damage.

Instead, when disconnecting fiber optic connectors or before connecting fiber optic cables, best practice is always to clean the end face, save a picture of the end face using your fiber optic microscope, and then test the cable.

### The CleanMachine with XpertClean process gives first time cleaning for all common soils:

- Finger oils
- Mineral oils and grease
- Gels & pulling lubricants
- Dust, dirt & carbon
- Water & salt residue & more

The XpertClean process is industry proven, exceeding IEC 61300-3-35, IEC TR62627-01, and meeting Telcordia GR-2923-CORE and SAE Aerospace AIR6031.

Dry media can smear oils, not fully remove dry particulates, and can create a static field that attracts and holds onto additional debris. Wet cleaning can oversaturate connectors, drawing up contamination from around the ferrule as viewed in IEC 61300-3-35. The result is unreliable cleaning processes that provide unreliable results. Without XpertClean additional cleaning passes, replacement jumpers or connectors will be required.



2.5mm

CleanMachine for ST,SC,FC Fiber Optic End Faces

ST, SC, FC Connection Kit (Part #: XC-AC-CKIT-STSCFC)

#### Kit Contains:

- 1 CleanMachine tool for 2.5mm ST,SC, FC end faces
- 2 CleanWash fiber optic cleaning pen
- 1 CleanSwab 2.5mm foam swabs
- 1 Box of CleanStrip foam platen



1.25mm

CleanMachine for LC Fiber Optic End Faces

LC Connection Kit (Part #: XC-AC-CKIT-LC)

#### Kit Contains:

- 1 CleanMachine tool for 1.25mm LC end faces
- 2 CleanWash fiber optic cleaning pen
- 1 CleanSwab 1.25mm foam swabs
- 1 Box of CleanStrip foam platen

# CleanMachine

## Fast, Effective Bulk Fiber Connector End-Face Cleaning

The CleanMachine provides a fast, simple method of fiber optic cleaning. End faces in bulkheads or on cable assemblies are both effortlessly cleaned the first time . . . every time.

The CleanMachine has an easy to use mechanism that advances fabric over a cleaning tip with just a short push and click of the tool. Using the CleanMachine with the CleanWash Pen is part of the fast, easy and repeatable XpertClean process.

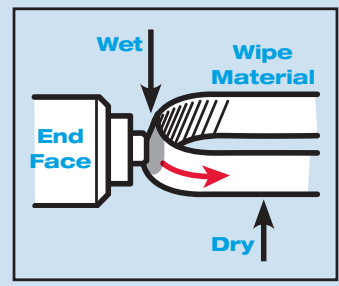
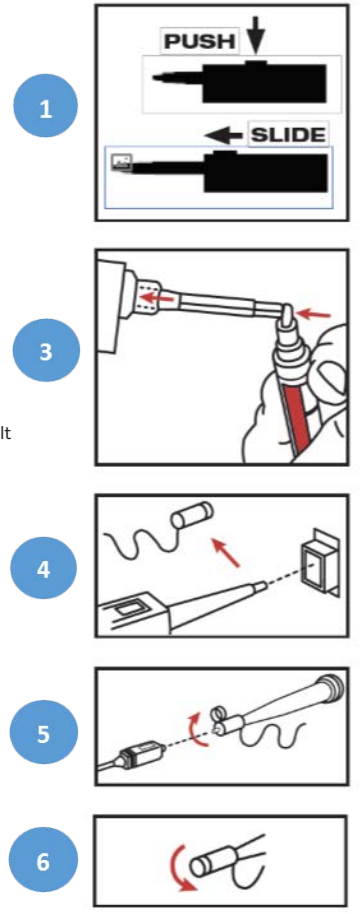


- Cleans connectors on back plane and on jumpers
- Effective for the widest range of contaminants
- Easy to use for quick and reliable cleaning
- Rugged and durable, great for all work sites
- Up to 600 cleanings per kit

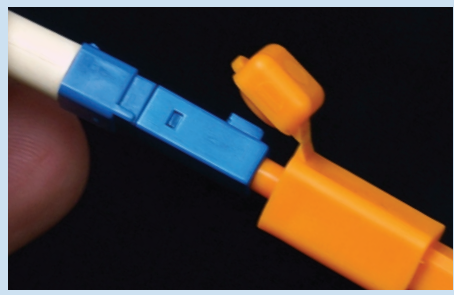
### Directions for use:

- 1 Extend the CleanMachine tip by pushing the thumb notch and sliding the tip forward.
- 2 Depress the felt tip of the CleanWash pen on a hard, clean surface to start cleaning solution flow.\*
- 3 Moisten CleanMachine tip by:
  - a) Removing the CleanMachine cap to expose cleaning tip
  - b) Touching CleanMachine opening to CleanWash pen tip
  - c) Depressing CleanMachine to first 'stop' or until resistance is felt
  - d) Hold for 3 seconds

**Do not oversaturate the tip!**
- 4 Insert the cleaning guide directly into the bulkhead to be cleaned. Push in gently until CleanMachine clicks. Recap CleanMachine and CleanWash when finished.
- 5 For cleaning a patch cord connector, place cap back onto the CleanMachine tip. Flip open top and push connector end face onto moistened cleaning area. Depress CleanMachine until clicking is heard. Remove connector.
- 6 Recap CleanMachine and CleanWash when finished to maintain cleanliness.



Apply a drop of CleanWash on the cleaning tip fabric. Next, the CleanMachine click passes the fabric over the end face, dissolving, removing and drying the end face. This provides cleaning and drying in one simple step.



Flip open cap for cleaning connectors



Remove cap for cleaning adapters and bulkheads

# CleanSlide

## For hard to reach fiber end face cleaning

1. Lift cap
2. Move connector holder to the left or right side for initial positioning
3. Insert connector into holder with connector key turned to the left. SC, FC, ST inserts into larger left hole. MU and LC insert into smaller right hole of holder.
4. Move holder only in one direction. Do not push, only slide left or right in one direction.
5. Do not use with cleaning liquid
6. When you see a color indicator on cleaning material, the CleanSlide is ready to be reordered.

