

Model 200

DucTester



retrotec

Digital Gauge

The Retrotec DM32 displays every possible result and lets a user control fan speed via its touchscreen. Many features are ***exclusive** to Retrotec.

Results at exactly the pressure you need.*

Dimensions eliminate calculations.*

"Set Pressure" control to any pressure.*

Settings saved on shutdown. No need to adjust every time.*

Baseline automatically subtracted.

Calculates Result in any unit.*

"Set Speed" and adjust with intuitive up/down arrow keys.*

Home from any screen*

CFM at 25 Pa test pressure used for many standards.

CFM at 25 Pa per 100 square feet.*

Hold Result to write it down.

EqLA at 25 Pa lets you visualize the size of the hole in ducts or house.*

***exclusive**

DM32 Digital Gauge

Weight	12oz/340g
Size	5.70 x 3.73 x 1.4 in 14.5 x 9.5 x 3.5 cm
Power	USB to AC adaptor 4200 mAh internal rechargeable battery

Result:	Units Available:	Example:
Pressure:	Pa, in WC, psf (lb/sq ft)	53.5 Pa
Flow:	CFM, L/s, cu m/s, cu m/h	253.5 CFM
Flow per area:	CFM/sq ft, CFM/100 sq ft, CFM/1000 sq ft, (L/s)/sq m, (cu m/h)/sq m	0.25 CFM/100 sq ft@75.0Pa
Leakage Area:	EqLA, EqLA10 (Canadian), EflA, EflA4 (US): sq in, sq ft, sq cm	12.8 EQLA sq in @10.0Pa
Leakage Area per area:	/100 sq ft, /sq m, /sq ft	1.15 EQLA10 sq in/sq ft
Air changes per hour:	According to volume entered: /hr	2.7 ACH



Network control from a computer.*



Tapered connectors best seal & easy disconnect. Will not tear tubing.*



Rechargeable internal batteries save \$200/year.*



Umbilical helps with tubing organization.*

Model 200 Fan

Power light indicates power to fan.*

On/Off switch restores speed to previous setting.*

*exclusive



Status light indicates good gauge connection.*



Speed Control Choices:



Control knob at the fan.*



from the gauge speed control output



from up to 100 feet away.* (extra cost)



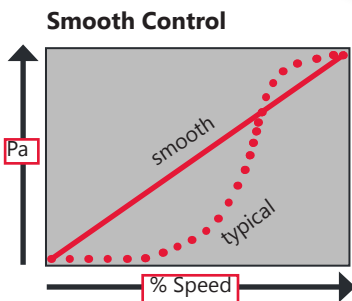
from fully automatic FanTestic software via the gauge.



100,000 hour impeller

Tough ergonomic shell

Clear shells may be available for training purposes.



Pressure and speed increase smoothly.*
Typically, controls accelerate in an uneven fashion creating surges and gaps.

	Flow into:	CFM	L/s	cu m/h
Maximum Flow, 120V 60 Hz Open Range	free air	690	326	1172
	50 Pa **	600	283	1020
Maximum Flow, 120V 60 Hz Mid Range	50 Pa **	200	94	340
Maximum Flow, 120V 60 Hz Low Range	50 Pa **	50	24	85
Minimum Flow	25 Pa	7	3.3	12

Maximum Flow is reduced by 7% for 240V 50 Hz and 15% for 110V 50 Hz

** (with Flex attached)

Dimensions	13 in. length, 11 in. width, 13.25 in. height
Weight	11.75 lbs (5.3 kg)
Flow Accuracy	+/- 3%
Power	120V AC or 240V AC, 185 watts 50 or 60 Hz

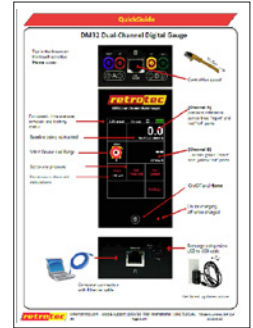
System Components



Every system comes with detailed QuickGuides with links to step-by-step videos.



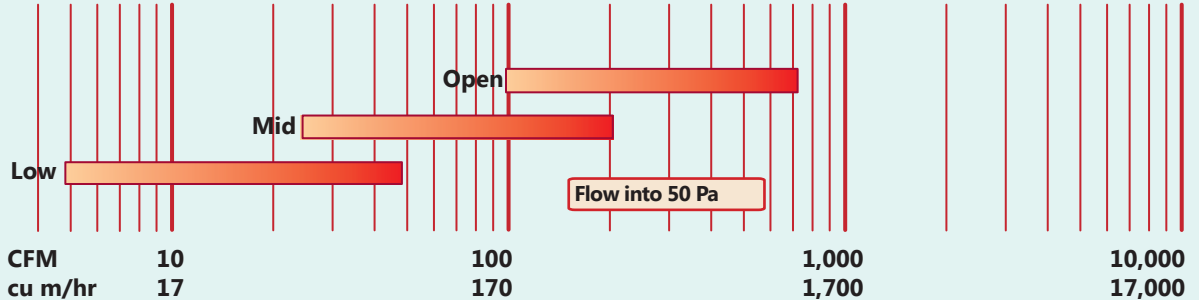
14. QG131



15. QG160

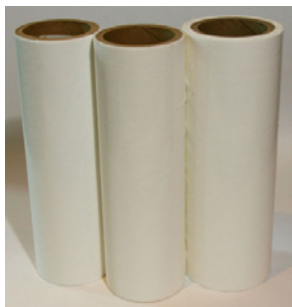
Includes

1. Model 200 calibrated fan, 2. Mid-Range Ring, 3. Low-Range Ring, 4. 25 ft power cord, 5. Tubing accessory kit with Static Pressure Probe, 6. Custom case, 7. Grill Mask (also comes in case of 3), 8. Laptop-style gauge case, 9. DM32 digital gauge with internal rechargeable batteries, 10. 20 ft (7 m) umbilical, 11. 12.5 ft Flex Duct, 12. Register Flange, 13. Fan-Top (120v/60Hz), 14. DucTester QuickGuide, 15. DM32 QuickGuide.



Three included Ranges, allow the leakiest and tightest ducts to be tested. Calibration meets RESNET, ASTM E779-10, EN 13829, CGSB 149.10, ATTMA TS-1.

Options for Model 200



Grill Mask to seal registers.
#GR109 for case of 3.



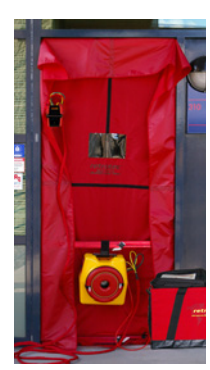
Pressure Pan Hood connects to ducts for leakage and flow measurement. #PP105



Air Current Tester.
#AC107



Field Calibration Plate verifies system in working condition.
#DU159



US200 Door Panel for tight enclosures.
#AL214

