



# Optio Collaboration™ Table

NEW



Your solution for ergonomic, dynamic, and active collaboration environments.

Optio is Latin for options, and that's what this new table offers

## Easy to Customize

- Choose straight or tapered edge worksurface in multiple laminates/colors to match your decor
- Choose from three fixed-height legs or the electric eLift for easy flexibility for multiple users
- Configure the table as you want it, including table size, leg styles, height and cutouts for AV, and display

## Ergonomic & Flexible

- Go from sitting to standing with optional whisper quiet eLift
- Tapered worksurface allows full screen viewing area for participants
- Technology within reach for every individual on the team
- ADA compliant

## Technology Integration

- Over 16 standard cut-outs for popular technology to support collaborative AV systems from major suppliers
- Available power and data modules keeps technology charged and connected
- AV Technology Channel safely secures and hides all cables and switching boxes
- Locking doors on AV Technology Channel to protect valuable electronics

## Collaborate and Engage

- Collaboration creates better communication allowing for progress to happen
- Take individual ideas and bring them together for more team-based solutions
- With optional casters, rearrange the room for best productivity

MANY AVAILABLE OPTIONS TO CREATE YOUR PERFECT TABLE





Questions?  
Please contact Spectrum customer service today!  
800-235-1262



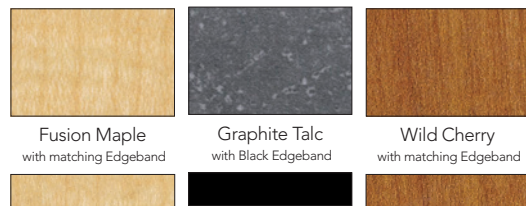
## Build Your Perfect Table

Simply follow each step below to generate your Optio Collaboration Table Product Order Number.  
Record the letter or number code from each step in the corresponding boxes in this order generating chart.

OPTIO COLLABORATION TABLE	1	2	3	4	5	6	7	8	9	
	LAMINATE	EDGE COLOR	METAL FINISH	WORKSURFACE	HEIGHT	LEG	1ST CUTOUT	2ND CUTOUT	CORD CHANNEL	STAND
3 7 1 3 2										

### 1 Choose Your Laminate and Edgeband Color

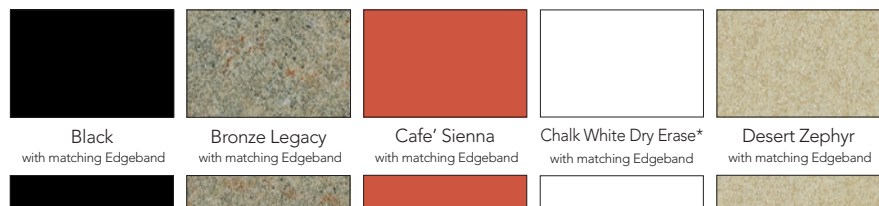
#### STANDARD LAMINATE COLOR EXPRESSIONS



Fusion Maple with matching Edgeband  
Graphite Talc with Black Edgeband  
Wild Cherry with matching Edgeband

ORDER CODE **FM FM** ORDER CODE **GT BK** ORDER CODE **CH CH**

#### ADDITIONAL LAMINATE COLOR EXPRESSIONS



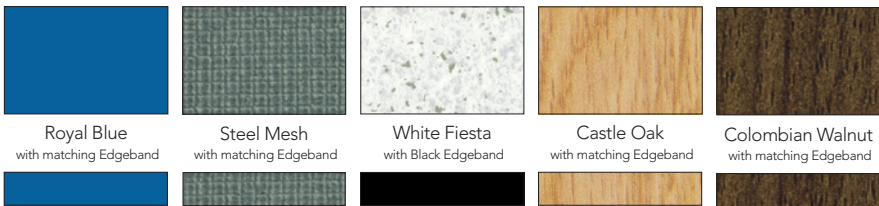
Black with matching Edgeband  
Bronze Legacy with matching Edgeband  
Cafe' Sienna with matching Edgeband  
Chalk White Dry Erase\* with matching Edgeband  
Desert Zephyr with matching Edgeband

ORDER CODE **BK BK** ORDER CODE **BL BL** ORDER CODE **CS CS** ORDER CODE **WD WD** ORDER CODE **DZ DZ**



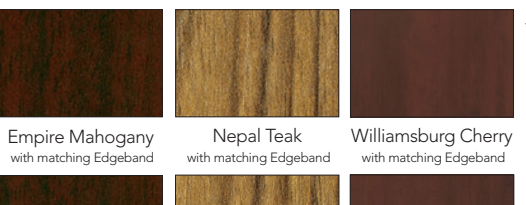
Gray with matching Edgeband  
Island with matching Edgeband  
Misted Zephyr with Silver North Sea Edgeband  
Navajo Red with matching Edgeband  
Pewter Mesh with matching Edgeband

ORDER CODE **GY GY** ORDER CODE **IG IG** ORDER CODE **MZ SN** ORDER CODE **NR NR** ORDER CODE **PM PM**



Royal Blue with matching Edgeband  
Steel Mesh with matching Edgeband  
White Fiesta with Black Edgeband  
Castle Oak with matching Edgeband  
Colombian Walnut with matching Edgeband

ORDER CODE **RB RB** ORDER CODE **SM SM** ORDER CODE **WF BK** ORDER CODE **CK CK** ORDER CODE **CW CW**



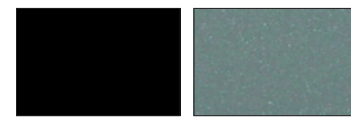
Empire Mahogany with matching Edgeband  
Nepal Teak with matching Edgeband  
Williamsburg Cherry with matching Edgeband

ORDER CODE **EM EM** ORDER CODE **NP NP** ORDER CODE **WC WC**

\*Additional charges will apply.

### 2 Choose Your Metal Finish

#### STANDARD METAL COLOR EXPRESSIONS



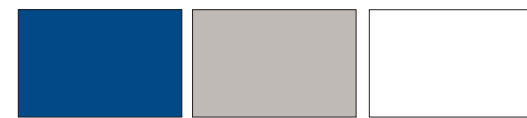
ORDER CODE **B** Black  
ORDER CODE **S** Silver Sparkle

#### ADDITIONAL METAL COLOR EXPRESSIONS



ORDER CODE **CM** Champagne Metallic  
ORDER CODE **D** Dark Gray  
ORDER CODE **LB** Light Blue

ORDER CODE **LI** Lime Green  
ORDER CODE **OR** Orange  
ORDER CODE **SR** Signal Red



ORDER CODE **BL** Spectrum Blue  
ORDER CODE **WG** Warm Gray  
ORDER CODE **UW** White



ORDER CODE **YW** Yellow

### MIX 'N' MATCH

Show your school colors, or color code your classroom!  
Pick your laminate with a complimentary edgeband!



### 3 Choose Your Worksurface



STRAIGHT

ORDER CODE **A**  
48"W x 96"L

ORDER CODE **B**  
48"W x 72"L

ORDER CODE **C**  
48"W x 60"L



TAPERED

ORDER CODE **D**  
42"W x 96"L

ORDER CODE **E**  
42"W x 72"L

ORDER CODE **F**  
42"W x 60"L

ORDER CODE **G**  
48"- 60"W x 96"L

ORDER CODE **H**  
48"- 60"W x 72"L

ORDER CODE **I**  
48"- 60"W x 60"L

ORDER CODE **J**  
40"- 48"W x 96"L

ORDER CODE **K**  
40"- 48"W x 72"L

ORDER CODE **L**  
40"- 48"W x 60"L

### 4 Choose Your Table Height

ORDER CODE **0**  
27"H elementary height

ORDER CODE **1**  
30"H adult height

ORDER CODE **2**  
42"H standing height

ORDER CODE **3**  
eLift (29"-42" height)

### 5 Choose Your Leg Option (MATCHES METAL COLOR)



ORDER CODE **0**  
T-Legs w/ glides



ORDER CODE **1**  
eLift w/ glides



ORDER CODE **2**  
T-Legs w/casters



ORDER CODE **3**  
eLift w/casters



ORDER CODE **4**  
T-Legs w/ Matching Laminate Panel



ORDER CODE **6**  
T-Legs w/ Matching Laminate Panel w/ casters

### 6 7 Choose Your Cutout Options



Please visit [www.spectrumfurniture.com/Optio](http://www.spectrumfurniture.com/Optio) to configure your table with the cutouts you need. You can choose up to two cutouts per table.

Over 16 standard cutouts available for popular technology to support collaborative AV systems from suppliers like Crestron®, ECA®, Extron®, and Kramer®.

### 8 Choose Your Cord Channel Option



ORDER CODE **0**  
No Cord Channel



ORDER CODE **1**  
Cord Channel



ORDER CODE **2**  
AV Technology Channel w/ Metal Side Panels

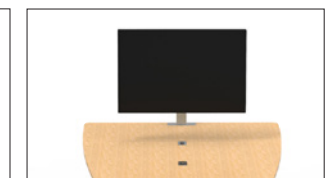


ORDER CODE **3**  
AV Technology Channel w/ Matching Laminate Panels

### 9 Choose Your Display Stand (MATCHES METAL COLOR)



ORDER CODE **0**  
No Display Stand



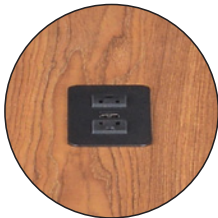
ORDER CODE **1**  
Display Stand



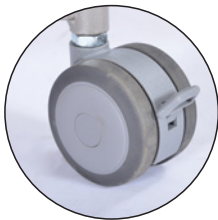
MATCHING LAMINATE PANEL



eLIFT HEIGHT ADJUSTMENT



STANDARD CUT-OUTS AVAILABLE



CASTERS FOR MOBILITY



37132



Worksurface Available with EM Wireless Charging Pad!

## Optio Collaboration™ Table

### PRODUCT DIMENSIONS

WIDTH	STRAIGHT TABLE: 42" OR 48" WIDE
	TAPERED TABLE: 40" - 48" OR 48" - 60"
LENGTH	60", 72", 96"
HEIGHT	FIXED HEIGHT: 27", 30", 42"
	eLift: 29" - 42"

### OPTIONS (WHEN ORDERING SEPARATELY)

37130	DISPLAY STAND
99057	EM WIRELESS PAD
99058	POWER MODULE (BLACK, SILVER, WHITE)
38999	CORD CHASE
55518	CAMERA MOUNT

### WARRANTY

10 YEAR - TABLE
2 YEAR - ELECTRICAL

