

NEW

# OM5 Active Seating

## Body Activated Motion

creates ergonomic seating that is both intuitive and highly responsive

Flexibility  
to choose the best options for your space

### BODY-ACTIVATED MOTION

- Unique geometry that links the seat and back movement around an ergonomically positioned hip pivot point
- Highly comfortable chair – whatever the user's position
- Eliminates one of the most basic – but restricting – parts of any chair design: the control mechanism

### ERGONOMIC

- Self-regulating chair
- Intuitively responds to a wide range of body weights, sizes, and sitting positions without the need for manual adjustment

### VERSATILE

- Choose from four base styles to fit your environment
- Available in hundreds of color combinations to suit your needs, from collaborative to meeting spaces and everything in between
- Option to stack or roll chairs to easily rearrange any room

### SIMPLICITY

- A new generation of seating where reason and beauty connect
- Simple, chic, and most importantly, intuitive
- Specifically designed to address the concerns of the contemporary workforce



Visit [www.spectrumfurniture.com/chairs](http://www.spectrumfurniture.com/chairs) to see all available options and to configure your chair

## Active Guest (AG)

38249-A



### DESCRIPTION

- One-piece, articulating plastic shell
- OM5 series® Body-Activated motion
- Stackable, 4-leg frame
- Glides and soft caster options
- 7 OM5 shell color options
- Nearly 200 designer upholstery options
- Integrated ganging
- Optional Arms, Book Tray and Tablet Arm

### SPECIFICATIONS

OVERALL WIDTH // 20.7" (WITHOUT ARMS)

OVERALL HEIGHT // 33"

BACK // 17.5"W x 16"H (WITHOUT ARMS)

SEAT // 18"W x 18"D

SEAT HEIGHT // 18" (FIXED)

WARRANTY // LIFETIME LIMITED

WEIGHT RATING // 300LBS

## Active Stack (AS)

38249-B



### DESCRIPTION

- One-piece, articulating plastic shell
- OM5 series® Body-Activated motion
- Stackable, sled-base frame
- 7 OM5 shell color options
- Nearly 200 designer upholstery options
- Integrated ganging
- Optional Arms
- Optional Book Tray

### SPECIFICATIONS

OVERALL WIDTH // 20.5" (WITHOUT ARMS)

OVERALL HEIGHT // 32.5"

BACK // 17.5"W x 16"H (WITHOUT ARMS)

SEAT // 18"W x 18"D

SEAT HEIGHT // 18" (FIXED)

WARRANTY // LIFETIME LIMITED

WEIGHT RATING // 300LBS

## Active Tasker (AT)

38249-C



### DESCRIPTION

- One-piece, articulating plastic shell
- OM5 series® Body-Activated motion
- Pneumatic lift in 5" (std) or 8" and 10" stool sizes
- 7 OM5 shell color options
- Nearly 200 designer upholstery options
- Three bases and footring styles
- Multiple caster options

### SPECIFICATIONS

OVERALL WIDTH // 25"

OVERALL HEIGHT // 32"-36.5"

BACK // 17.5"W x 16"H (WITHOUT ARMS)

SEAT // 18"W x 18"D

SEAT HEIGHT // 16.5"-21"

WARRANTY // LIFETIME LIMITED

WEIGHT RATING // 300LBS

## Active Cafe Stool (AC)

38249-D



### DESCRIPTION

- One-piece, articulating plastic shell
- OM5 series® Body-Activated motion
- CA TB133-certified (no upcharge)
- Stackable, sled-base frame
- Available counter height (24" seat) and bar height (30" seat) frames
- 7 OM5 shell color options
- Nearly 200 designer upholstery options
- Integrated ganging
- Optional Book Tray

### SPECIFICATIONS

OVERALL WIDTH // 20.5" (WITHOUT ARMS)

OVERALL HEIGHT // 44.5"

BACK // 17.5"W x 16"H (WITHOUT ARMS)

SEAT // 18"W x 18"D

SEAT HEIGHT // 30" (FIXED STD)

WARRANTY // LIFETIME LIMITED

WEIGHT RATING // 300LBS

# Optional Accessories

Some assembly may be required

## ACTIVE GUEST (AG)

38249-A



ARM



TABLET ARM



BLACK or SILVER  
FRAME



BOOK TRAY



CASTERS or GLIDES

## ACTIVE STACK (AS)

38249-B



ARM



BLACK or CHROME  
FRAME



BOOK TRAY

## ACTIVE TASKER (AT)

38249-C



ARM



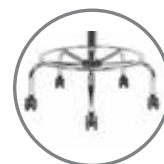
BLACK or POLISHED  
BASE



5", 8" or 10"  
COLUMN



TURNLOCK  
FOOTRING



FIXED HEIGHT  
FOOTRING



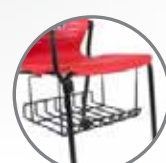
6 CASTER or GLIDE  
OPTIONS

## ACTIVE CAFE STOOL (AC)

38249-D



ARM

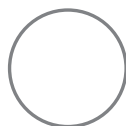


BOOK TRAY



24" or 30"  
SEAT HEIGHT

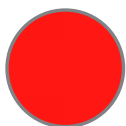
## OM5 SHELL COLORS



ARCTIC  
WHITE



AURORA  
GREEN



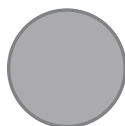
CARDINAL  
RED



MANDARIN  
ORANGE



MODERN  
BLACK

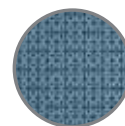


PALLADIUM  
GREY

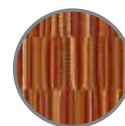


SAPPHIRE  
BLUE

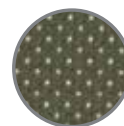
## OM5 FABRICS



AEGEAN



SPICE



WYNN

Choose from nearly 200 upholstery options to customize your chair.

See website for full upholstery selection.