

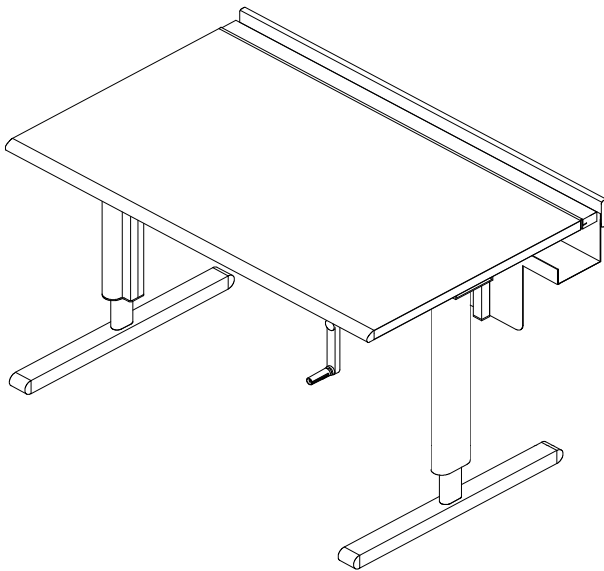
# Owner's Manual



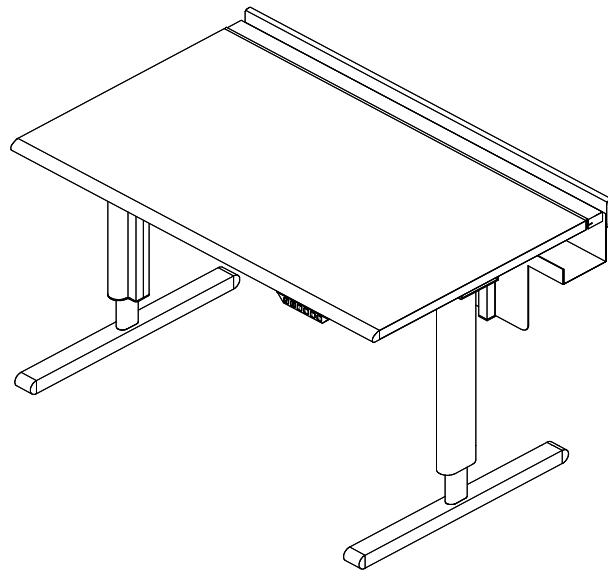
## Liberty ADA Desks

<b>Crank-Adjustable</b>	
38792	44" CLASS
38793	48" CLASS
38932	44" Evolution
38933	48" Evolution

<b>Electric ECS-Adjustable</b>	
38790	44" CLASS
38791	48" CLASS
38935	44" Evolution
38936	48" Evolution



Crank-adjustable



Electric ECS-adjustable

**IMPORTANT:**

Before you begin, please make sure all parts and proper quantities are included. Any parts damaged during shipment must be reported within 15 days of receipt. To report information regarding damages or if you have any questions, please call 1-800-235-1262.

**CAUTION:**

Before using this product, read this manual and follow all safety and operating instructions.

To purchase parts or accessories, please contact us at [www.spectrumfurniture.com](http://www.spectrumfurniture.com)  
1-800-235-1262

Thank you for choosing Spectrum products!



205 Westwood Ave, Long Branch, NJ 07740

Phone: 866-94 BOARDS (26273) / (732)-222-1511

Fax: (732)-222-7088 | E-mail: [sales@touchboards.com](mailto:sales@touchboards.com)



Spectrum Industries, Inc.  
Chippewa Falls, WI 54729, USA





# Safety



- Read this owners manual before operation
- For indoor use only. Do not install or store the unit where it will be exposed to weather. Keep unit dry.
- For added safety, plug the unit into a grounded three-prong receptacle controlled by a GFI (Ground Fault Interrupter) circuit breaker.

## Hardware package contents

### Crank-Adjustable Desk



(32) 026064 (B)  
043493 (P)  
1/4-20 x 5/8" PHMS



(4) 041289  
1/4-20 x 1-3/4" PHMS



(2) 026011 (B)  
043771 (K)  
1/4-20 x 2" FHMS

### Electric-ECS Adjustable Desk



(32) 026064 (B)  
043493 (P)  
1/4-20 x 5/8" PHMS



(4) 041289  
1/4-20 x 1-3/4" PHMS



(2) 026011 (B)  
043771 (K)  
1/4-20 x 2" FHMS



(4) 026073  
#8 X 3/4" PHSM



(2) 021585  
#6 X 1/2" PHSM



(4) 044207  
1" Cord Clip

## Tools Required



Phillips Head  
Screwdriver

## Crank-Adjustable Desk Assembly / Setup:

### 1. Attach Drive shaft Assembly to Leg

- Orient the right leg as shown in **Figure 1A**.
- Insert the drive shaft assembly through the hole as shown and attach to the gear box with the (4) #6 x 5/8" PHSM screws included with the drive shaft. **Figure 1B**.

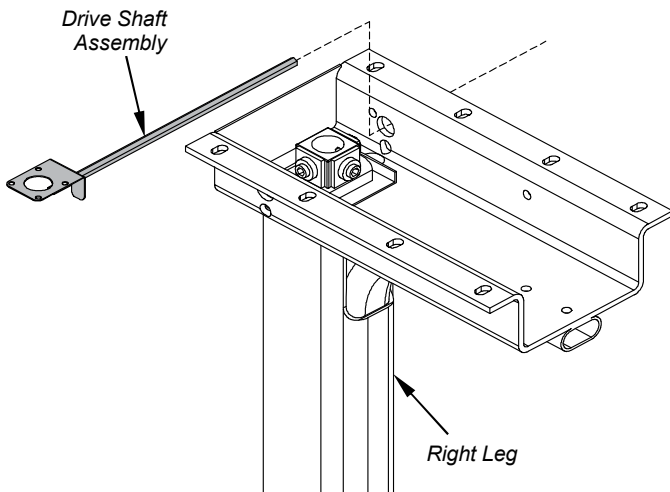


Figure 1A

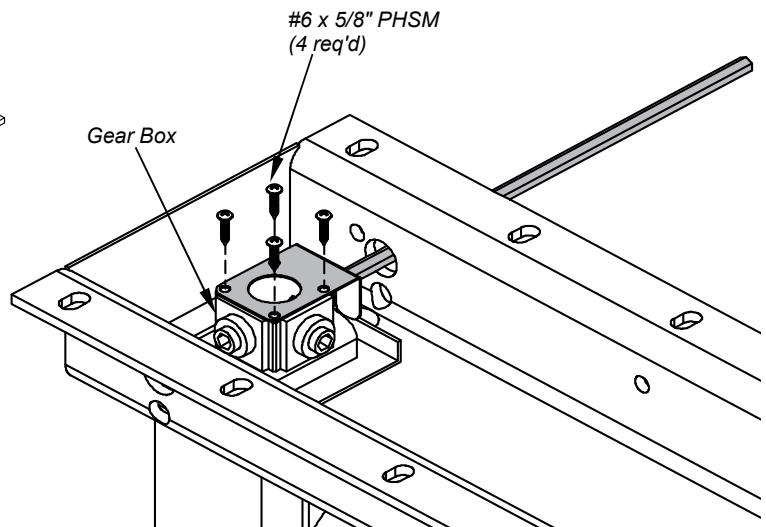


Figure 1B

## 2. Attach Legs & Drive Assemblies to Worksurface

- Carefully flip the worksurface face-down onto a non-abrasive surface and orient the right leg as shown in **Figure 2**.
- Attach the right leg and right-hand hex drive bar assembly to the worksurface using 1/4-20 x 5/8" PHM screws. (Be sure the drive bar shaft is fully-inserted into the gear box before attaching.)
- Attach the crank mount to the leg drive shaft, and attach to the worksurface with 1/4-20 x 5/8" PHM screws.
- Connect the left and right-hand drive assemblies while engaging the drive mechanism. If necessary, the drive mechanism alignment can be adjusted by turning the crank handle slightly.
- Attach the left leg and drive assembly to the worksurface using (8) 1/4-20 x 5/8" PHM screws.

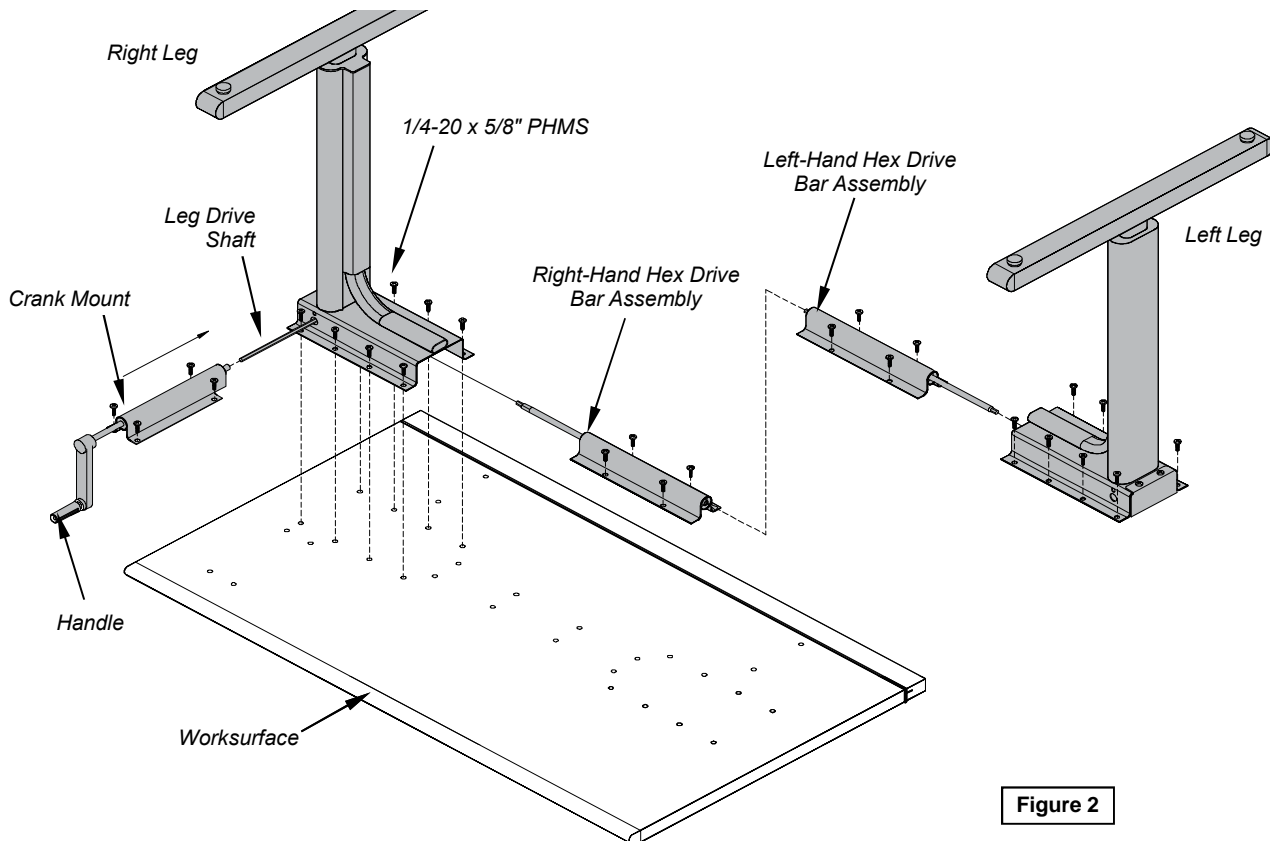


Figure 2

## 3. Attach T-Supports, Cord Channel & Chair Rail

- Attach the T-supports to the worksurface using (4) 1/4-20 x 1-3/4" PHM screws. **Figure 3**.
- Attach the cord channel to the T-supports using (4) 1/4-20 x 5/8" PHM screws.
- Attach the chair rail using (2) 1/4-20 x 2" FHM screws.
- Carefully flip the desk upright-this may take several people.

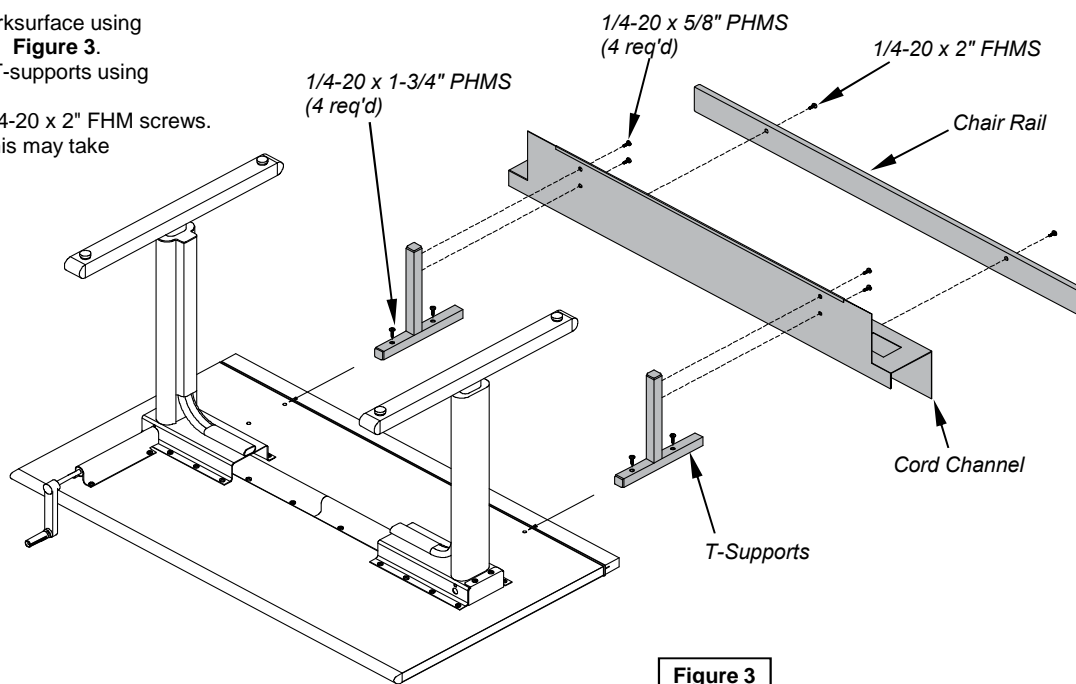


Figure 3



205 Westwood Ave, Long Branch, NJ 07740  
Phone: 866-94 BOARDS (26273) / (732)-222-1511  
Fax: (732)-222-7088 | E-mail: sales@touchboards.com

## 1. Attach Legs to Worksurface

- A. Carefully flip the worksurface face-down onto a non-abrasive surface. **Figure 1.**
- B. Attach each leg to the worksurface using (8) 1/4-20 x 5/8" PHM screws.

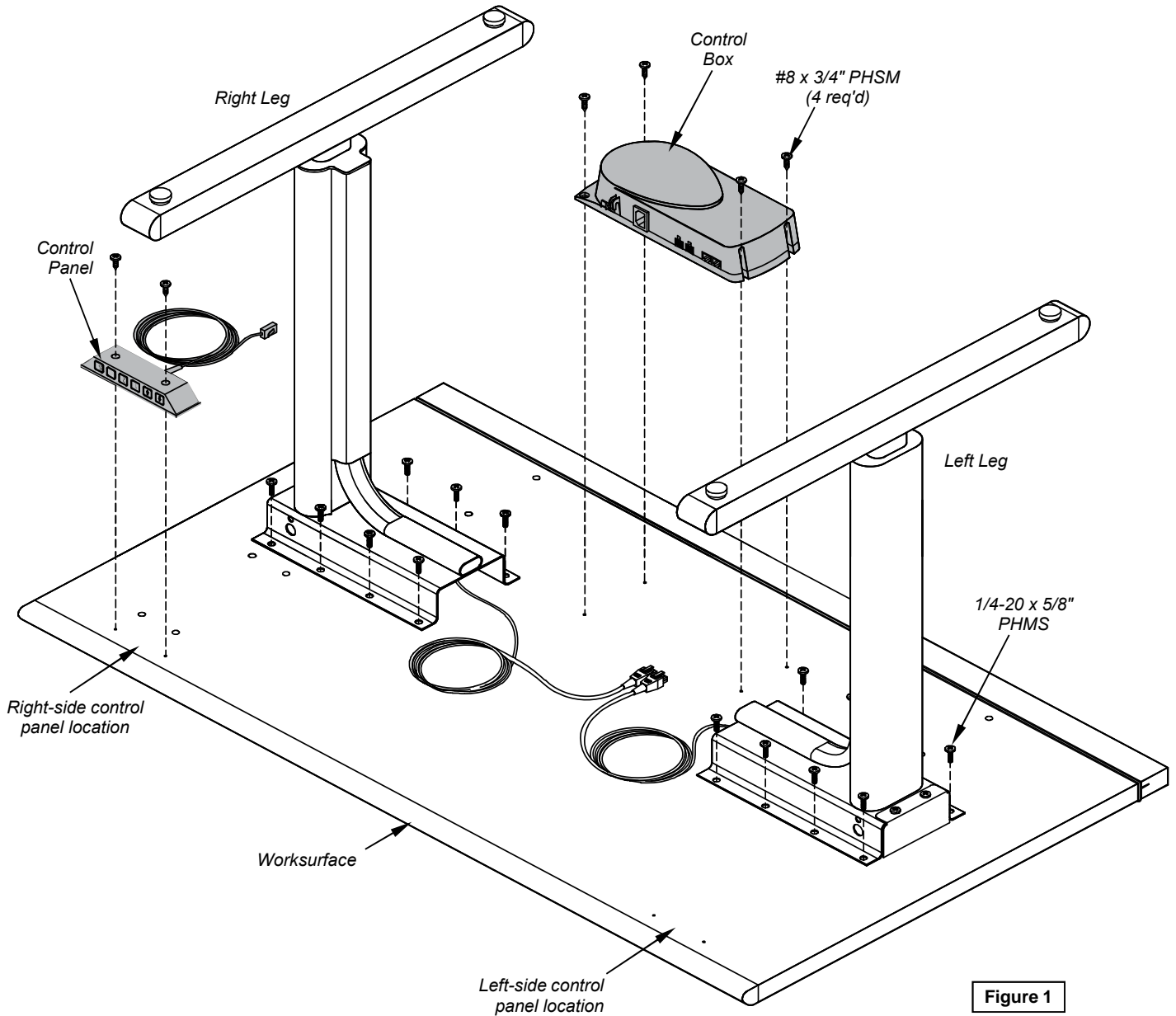


Figure 1

## 2. Attach Control Box & Control Panel

- A. Attach the control box using (4) #8 x 3/4" PHSM screws and the pre-drilled holes. **Figure 1.**
- B. Determine which side of the desk you want to mount the control panel (left or right side.)
- C. Attach the control panel using (2) #6 x 1/2" PHSM screws and the pre-drilled holes.

### 3. Attach T-Supports, Cord Channel, & Chair Rail

- A. Attach the T-supports to the worksurface using (4) 1/4-20 x 1-3/4" PHM screws. **Figure 3.**
- B. Attach the cord channel to the T-supports using (4) 1/4-20 x 5/8" PHM screws.
- C. Attach the chair rail using (2) 1/4-20 x 2" FHM screws. *(These screws will attach to the T-support ends.)*

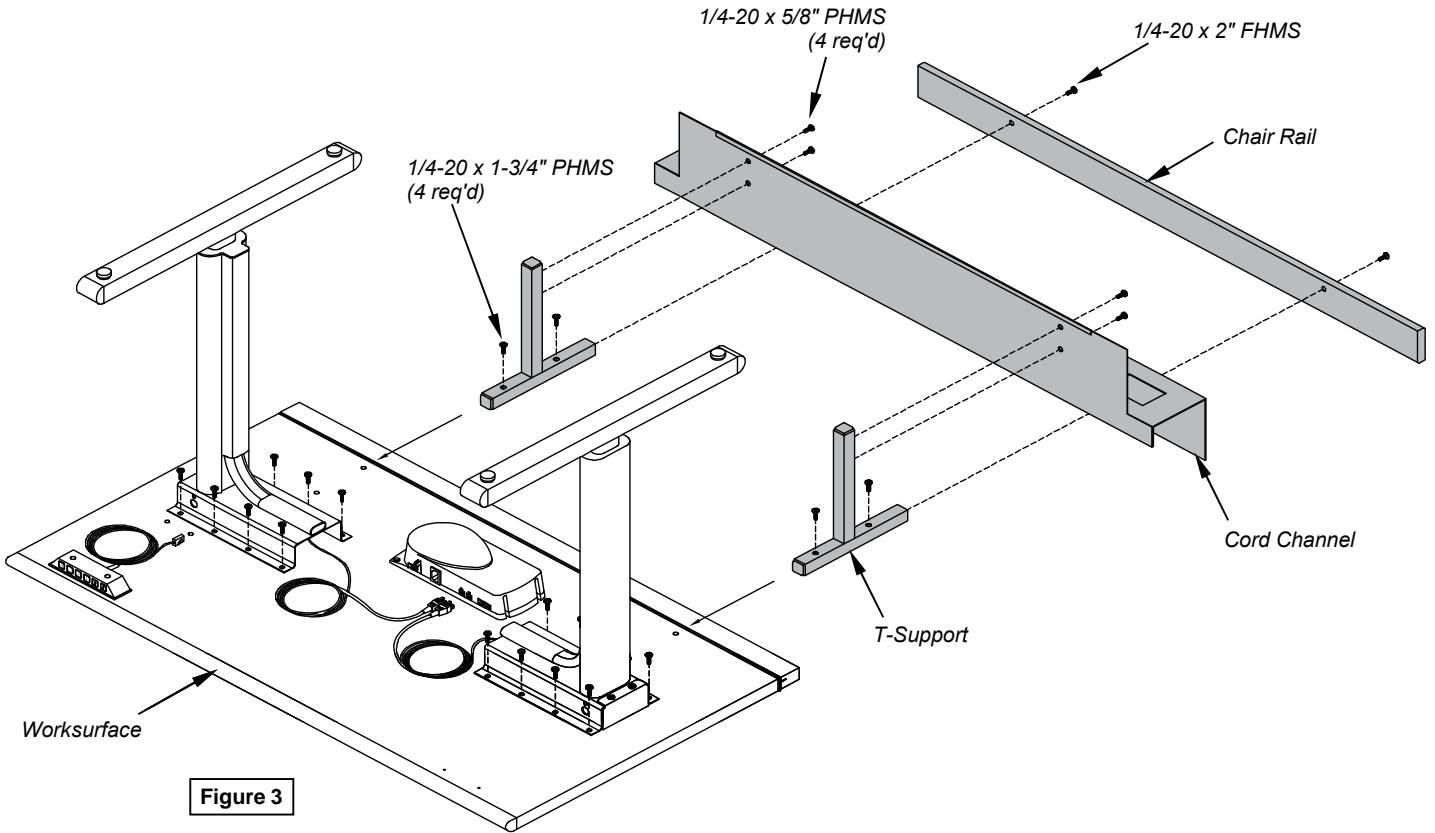


Figure 3

### 4. Connect Cords

- A. Connect the cords to the control box as shown in **Figure 4.**
- B. Use the cord clips to secure the cords to the underside of the worksurface.
- C. Carefully flip the desk upright-this may take several people.

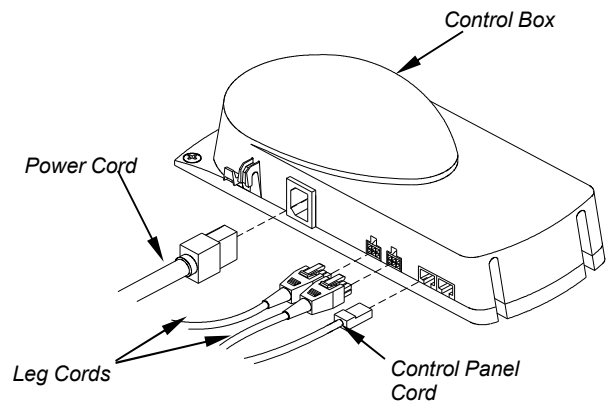
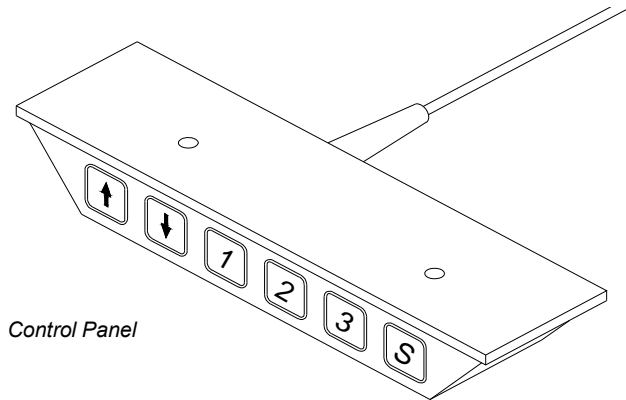


Figure 4

## 5. Control Panel Operation, Memory Presets, & Reset Procedure

- A. Plug in the power cord. Route cord so it is not a tripping hazard.
- B. To adjust the desk height, press the "Up" or "Down" arrow keys until the preferred height is achieved. **Figure 5.**
- C. Numbers "1, 2, & 3" are memory settings. After a preferred height is reached, the height setting can be saved by pressing "S" and then number "1, 2, or 3." To adjust from one memory setting to another, press and hold the number until the pre-programmed height is attained.



Control Panel

Figure 5



Use caution when raising or lowering the worksurface. **Do not** sit at, under, or on the worksurface when operating the lift mechanism and be sure desk movement does not interfere with objects or people. Keep clear of pinch points during worksurface movement. The lift actuators are rated at a maximum capacity of 180 lbs.

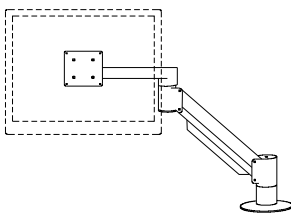
**Note:** Occasionally it may be necessary to reset the lift mechanism. This should be performed if the lectern does not extend or retract.

### **Reset Procedure:**

1. Unplug, then re-plug-in the power cord into a wall outlet or power strip.
2. Make sure all lift mechanism wire connections are in place and secure.
3. Press and hold the "down" button until the monitor column has bottomed-out for 10 seconds.
4. Release, then press and hold the "Down" button again for another 10 seconds.
5. Release the "down" button.

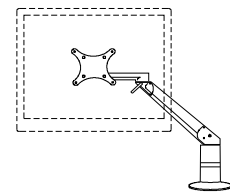
The lift mechanism has now been reset and normal operation can resume.

## Liberty ADA Desk Options

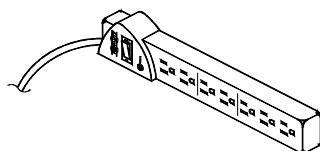


**Flat Panel Monitor Arm**  
 95512 (for monitors weighing 4-11.5 lbs)  
 95522 (for monitors weighing 10-27.5 lbs)  
 95509 (for monitors weighing 14-31 lbs)

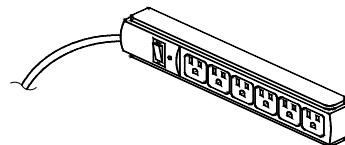
**Note:** Monitor arms can be mounted to the worksurface with a  $\frac{3}{8}$ " mounting hole or clamped to the edge.



**Evo Flat Panel Monitor Arm**  
 95523 (for 15"-19" monitors weighing 6-13 lbs)  
 95524 (for 19"-21" monitors weighing 13-21 lbs)



**7-Outlet Power Strip, insured**  
 w/surge protector, bracket, and 12' cord  
 10"W x 2"D x 1 $\frac{1}{8}$ "H  
 99024



**6-Outlet Power Strip**  
 w/ 12' cord  
 11 $\frac{5}{16}$ "W x 1 $\frac{1}{16}$ "D x 1 $\frac{3}{16}$ "H  
 99023

# Warranty

## **WE WILL MAKE IT RIGHT FOR YOU!**

We guarantee all Spectrum products to be free of all defects in materials and workmanship, for the original owner, for a period of **ten years**. Any item deemed defective by Spectrum or the original manufacturer, under normal use conditions, will be repaired or replaced at Spectrum's discretion. This warranty applies to all products manufactured and distributed by Spectrum except the products listed below.

**DESIGNED FOR INDOOR USE ONLY** - Spectrum's products have been designed and constructed for indoor use only. Moving or using outdoors, or on excessively rough surfaces, may cause damage to the products and may void the warranty. If an outdoor application is desired please contact us to discuss potential custom design solutions.

Spectrum is committed to provide complete customer satisfaction. Each of our products are manufactured from the best materials available and each product is stringently monitored throughout the production process through our P.A.C.E. program (Product Assurance to meet Customer Expectations).

Our Customer Service Help Line 1-800-235-1262 is ready to provide immediate attention to any questions, comments or concerns. We are available to answer your calls Monday through Friday from 7 am to 5 pm CST. In addition your product comments or concerns are welcome via e-mail at: [spectrum@spectrumfurniture.com](mailto:spectrum@spectrumfurniture.com).

Items that have a varying warranty include, but are not limited to, the following:

- Adjustable Crank/Electric Desk Legs (1 yr)
- Flat Panel Desk Gas Cylinders (1 yr)
- Adjustable Height Chair Parts – including frames, gas cylinders, wood and plastic parts, and control handles (7 yrs)
- Adjustable Height Chair Parts Casters (2 yrs)
- Adjustable Height Chair Upholstery - In-Stock Upholstery (2 yrs)
- Adjustable Height Chair Upholstery - Graded-In Fabrics and C.O.M (no warranty)
- Height Adjustable Columns and Lifts (1 yr)
- General Use Casters (1 yr)
- Electrical – ECA (1 yr)
- Electrical - Power Strips (1 yr)
- Electrical Surge Suppressors (lifetime)
- Electrical - Retractable Power Cords (1 yr)
- Keyboard/Mouse Trays (1 yr)
- Flat Panel Monitor Arm – General Parts (5 yrs)
- Flat Panel Monitor Arm – Gas Cylinders (2 yrs)
- CRT Monitor Arm (1 yr)

**The warranty, as stated above, is effective as of 05/28/2009**

# Touchboards

205 Westwood Ave, Long Branch, NJ 07740  
Phone: 866-94 BOARDS (26273) / (732)-222-1511  
Fax: (732)-222-7088 | E-mail: [sales@touchboards.com](mailto:sales@touchboards.com)



**SPECTRUM**  
INDUSTRIES INC.

925 First Avenue, PO Box 400, Chippewa Falls, WI 54729 Ph: 1-800-235-1262 Fax: 1-800-335-0473

E-mail: [spectrum@spectrumfurniture.com](mailto:spectrum@spectrumfurniture.com) web: [www.spectrumfurniture.com](http://www.spectrumfurniture.com)