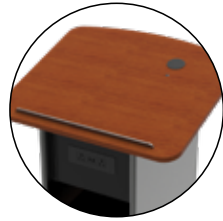




REMOVEABLE
AUDIENCE-SIDE PANEL



ERGONOMIC
WORKSURFACE



REMOVEABLE RACK CUBE
(OPTIONAL)



LOCKING TWIN-WHEEL
CASTERS FOR EASY
MOBILITY (OPTIONAL)



SHIPS ASSEMBLED

SLIM Lectern™

DESIGN SPECS

LECTERN	22.5" D X 24" W X 45.6" H
WORKSURFACE	22D" X 24W" w/10° Pitch

WARRANTY

10 year lectern
2 year electrical

AVAILABLE MODELS

55152	SLIM Lectern™
-------	---------------

OPTIONS (WHEN ORDERING SEPARATELY)

55513	Logo Panel
55514	Additional Shelf
96515	Underbridge Panel™
96516	Underbridge Panel™ & Power Module (black, silver or white)
97524	6RU Vertical Rack Cube



Slim & Modern
Meets
Tech-Savvy

Sleek. Lightweight. Inspiring. Modern. A compact lectern with modern design to match any décor with AV readiness if you need it

SIMPLE SLEEK DESIGN
INTEGRATES
ANYWHERE

SIMPLY FUNCTIONAL

- Slim, simple design to fit any space
- Large, angled, ergonomic worksurface with pencil stop
- Available with glides or locking casters
- Powder-coated, heavy gauge steel frame for years of use
- Underbridge™ with Power Module (optional)

AV INTEGRATION

- Removable 6RU rack cube (optional)
- Generous cable management
- Removable audience-side panel for easy AV integration
- Underbridge™ for AV control cutouts (optional)

ACCOMODATING DESIGN

- Metal or laminate sides
- Customizable front logo panel (optional)
- Small footprint fits into any classroom or learning space
- One or two shelves (optional)
- Rack cube can be ordered and shipped separately from lectern





Build Your Perfect Lectern

Simply follow each step below to generate your SLIM Lectern™ Product Order Number.
Record the letter or number code from each step in the corresponding boxes in this order generating chart.

SLIM LECTERN	1 LAMINATE	EDGE COLOR	2 METAL FINISH	3 SIDES	4 MOBILITY	5 POWER	6 RACK	7 LOGO PANEL
5 5 1 5 2								

1 Choose Your Laminate and Edgeband Color

STANDARD LAMINATE COLOR EXPRESSIONS



Fusion Maple with matching Edgeband | Graphite Talc with Black Edgeband | Wild Cherry with matching Edgeband



ORDER CODE **FM FM** | ORDER CODE **GT BK** | ORDER CODE **CH CH**

ADDITIONAL LAMINATE COLOR EXPRESSIONS



Black with matching Edgeband | Bronze Legacy with matching Edgeband | Cafe' Sienna with matching Edgeband | Chalk White Dry Erase* with matching Edgeband | Desert Zephyr with matching Edgeband

ORDER CODE **BK BK** | ORDER CODE **BL BL** | ORDER CODE **CS CS** | ORDER CODE **WD WD** | ORDER CODE **DZ DZ**



Gray with matching Edgeband | Island with matching Edgeband | Misted Zephyr with Silver North Sea Edgeband | Navajo Red with matching Edgeband | Pewter Mesh with matching Edgeband

ORDER CODE **GY GY** | ORDER CODE **IG IG** | ORDER CODE **MZ SN** | ORDER CODE **NR NR** | ORDER CODE **PM PM**



Royal Blue with matching Edgeband | Steel Mesh with matching Edgeband | White Fiesta with Black Edgeband | Castle Oak with matching Edgeband | Colombian Walnut with matching Edgeband

ORDER CODE **RB RB** | ORDER CODE **SM SM** | ORDER CODE **WF BK** | ORDER CODE **CK CK** | ORDER CODE **CW CW**



Empire Mahogany with matching Edgeband | Nepal Teak with matching Edgeband | Williamsburg Cherry with matching Edgeband

ORDER CODE **EM EM** | ORDER CODE **NP NP** | ORDER CODE **WC WC**

*Additional charges will apply.



NEED A CUSTOM COLOR?
No problem! Laminates from most manufacturers can be used on Spectrum products! Lead times, minimum quantities and cost will vary. Contact your Spectrum Rep!

2 Choose Your Metal Finish

STANDARD METAL COLOR EXPRESSIONS



ORDER CODE **B** Black | ORDER CODE **S** Silver Sparkle

ADDITIONAL METAL COLOR EXPRESSIONS



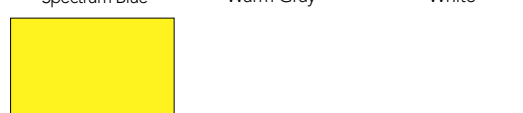
ORDER CODE **CM** Champagne Metallic | ORDER CODE **D** Dark Gray | ORDER CODE **LB** Light Blue



ORDER CODE **LI** Lime Green | ORDER CODE **OR** Orange | ORDER CODE **SR** Signal Red



ORDER CODE **BL** Spectrum Blue | ORDER CODE **WG** Warm Gray | ORDER CODE **UW** White



ORDER CODE **YW** Yellow

3 Side Panels



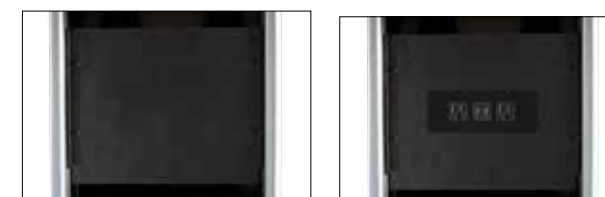
ORDER CODE **1** Metal Side Panel | ORDER CODE **2** Laminate Side Panel

4 Mobility Options

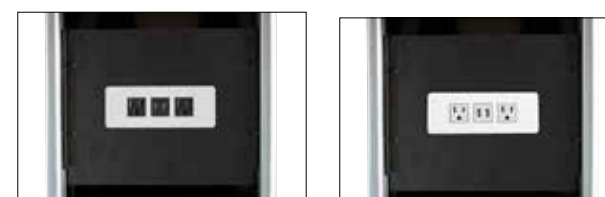


ORDER CODE **01** Locking Twin-Wheel Casters | ORDER CODE **02** Glides

5 Underbridge™ Power Options



ORDER CODE **1** Blank Panel | ORDER CODE **2** Power Module Black



ORDER CODE **3** Power Module Silver | ORDER CODE **4** Power Module White

ORDER CODE **0** None

6 6RU Rack Cube



ORDER CODE **0** None | ORDER CODE **1** 6RU Vertical Rack Cube

7 Audience-Side Logo Option



ORDER CODE **1** Custom Logo Panel Matching Laminate | ORDER CODE **3** Custom Logo Panel Black Laminate | ORDER CODE **4** Custom Logo Panel White Laminate

ORDER CODE **5** Custom Logo Panel Printed Backer | ORDER CODE **0** No Logo Panel

Logo Panel will increase lead time and additional charges will apply.

