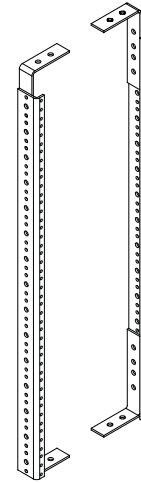
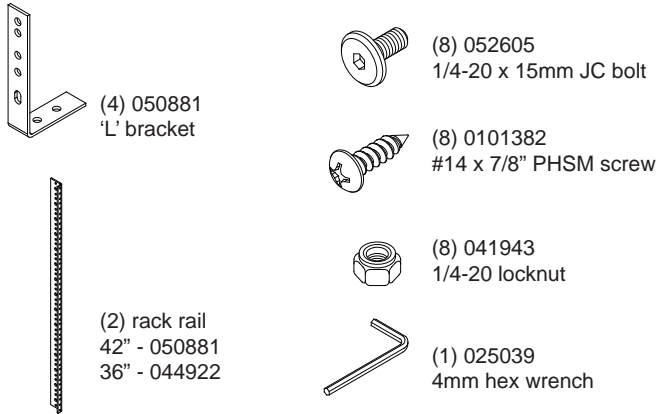


Assembly Instructions

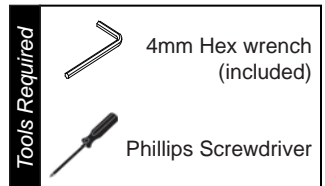
To purchase parts or accessories, please contact us at
www.spectrumfurniture.com
 1-800-235-1262

Thank you for purchasing Spectrum products!

Before you begin, please make sure all parts and proper quantities are included. Any parts damaged during shipment must be reported within 15 days of receipt. To report information regarding damages or if you have any questions, please call 1-800-235-1262.



Rear Rack Rail Kit for Inspiration Lectern 36" - #55408 42" - #55407



1. Attach rack rail 'L' brackets to lectern

- Each rack rail requires an upper and lower "L" bracket. Open rear door. Attach each lower bracket to the base panel as shown with (2) #14 x 7/8" PHSM screws, but do not tighten completely yet. **Figure 1.**
Note: The side of the bracket with the two holes will mount either to the base panel or worksurface.
- Repeat this procedure for the 2 upper brackets on the underside of the worksurface.

2. Attach rack rails to brackets

- Using 1/4-20 x 15mm JC bolts and locknuts, attach the rack rails to the outside (toward the side panel) of the brackets as shown. **Figure 2.**
Note: The locknuts need to be on the outer side of the rack rails.
- Repeat this procedure on the upper side of the rack rails under the worksurface.
- Tighten all fasteners securely.

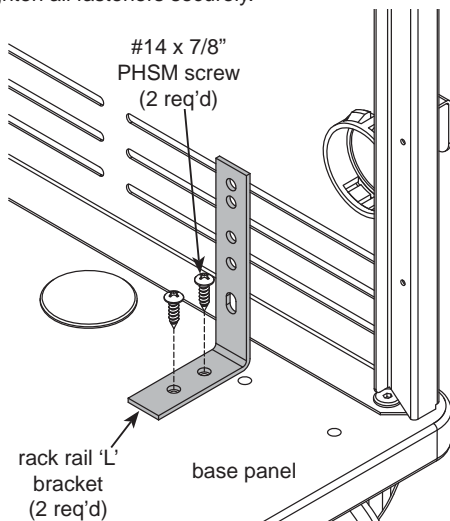


Figure 1

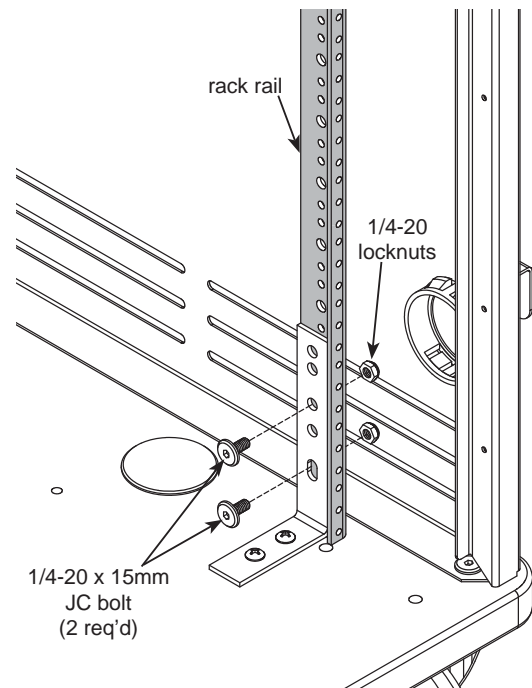


Figure 2