



LOCKING **NEW**
SECURITY DOOR

SIMPLE CABLE MANAGEMENT

This fully assembled pillar is the perfect place to collect devices and safely charge them.

SUPERIOR CABLE MANAGEMENT

- All-metal cord management system keeps charge cords organized next to each storage bay
- Brick storage is easy to access, and large enough for most size bricks
- One-touch power button
- Stacking power module allows multiple units to have one power source

FULLY ASSEMBLED

- Ships fully assembled for quick, simple integration and deployment *
- Small, compact design fits under standard-height cabinets



TABLET, CHROMEBOOK
AND NOTEBOOK
STORAGE SOLUTIONS

NEW Available with Security Door!



SAFETY FIRST

- ETL Listed to UL 60950-1 Standard
- Non-skid feet to protect furniture
- Rotated outlets will fit most charging systems on tablets, Chromebooks, and laptops
- Complete with 8' power cord
- Optional locking security door to protect devices - **NEW!**

UNIVERSAL

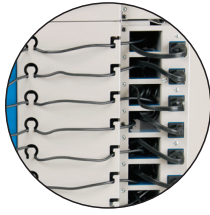
- Durable, heavy-duty, powder-coated and scratch resistant
- Option to stack stations, hang on wall, or mount on worksurface
- Metal shroud for wall mounting aesthetics and ADA compliance

*55394-EOU

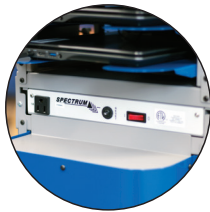
SPECTRUM
INDUSTRIES INC.

INNOVATIVE FURNITURE
connecting you with technology™

Shown:
(1) 55394-EOU
(1) 55416BLWG



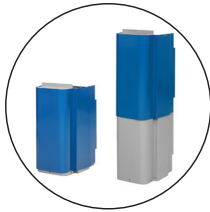
EASY CABLE MANAGEMENT



STACKING POWER MODULE



OPTIONAL SECURITY DOOR TO PROTECT DEVICES



OPTIONAL WALL SHROUD
ADJUST FROM 24" - 42"

NEW



Side-By-Side



Stand-Alone



Stackable



Shown:
(2) 55394-EOU
(2) 55395WG
(1) 55396WG
(1) 55397
(1) 55415BLWG

Wall Hang W/Shroud

SHIPS FULLY ASSEMBLED*
(*55394-EOU)



Collectiv8 Charging Pillar™

PRODUCT DIMENSIONS

NOMINAL DIMENSIONS (55394)
13.25"W x 17.06"D x 17.75"H (18.36"D WITH SECURITY DOOR)

SHELF DIMENSIONS
11"W x 14.93"D x 1.96"H

COLOR



WARM GRAY



SPECTRUM BLUE

WARRANTY

10 YEAR

2 YEAR ELECTRICAL

AVAILABLE MODELS

55394-EOU - COLLECTIV8 CHARGING PILLAR™

OPTIONS

55395WG - STACKING KIT

55396WG - WALL HANGING KIT

55415BLWG - WALL SHROUD KIT

55416BLWG - SECURITY DOOR/TOP PANEL
(Stand alone unit or top of stack.)

55417BLWG - SECURITY DOOR (Additional stacked units.)

55397 - POWER MODULE W/POWER SWITCH

55398 - POWER MODULE W/eLOGIX™

55399 - POWER MODULE W/POWERPRODIGY™

99056B - 3FT POWER CORD

