



Connect10™ Locker



205 Westwood Ave, Long Branch, NJ 07740
Phone: 866-94 BOARDS (26273) / (732)-222-1511
Fax: (732)-222-7088 | E-mail: sales@touchboards.com

NEW



MANAGE ANY DEVICE

Keep your tablets, Chromebooks, or laptops charged and secure in one location

This flexible locker makes managing your devices simple and easy

ORGANIZED

- Charging plugs are secured above each charging bay
- Pull out power adapter storage drawer allows for easy integration
- Keyed lock plus integrated hasp with heavy gauge steel door provides for vault-like protection
- Power adapter storage drawer keeps plugs handy

FRIENDLY DESIGN

- ETL Listed to UL 60950-1 standard
- Ample clearance is provided for easy removal/insertion of devices
- Manages up to 10 tablets, Chromebooks, or laptops up to 14"
- Powder-coated, heavy-gauge steel construction for vault-like security – one of the toughest lockers on the market

SAFETY FIRST

- Ventilated locker provides chimney effect airflow keeping equipment cool
- Unit can be mounted to a worksurface for additional security

UNIVERSAL

- Large bays will accept most devices up to 15.6"
- Small footprint can fit into tight spaces
- Two handles allow for convenient mobility



TABLET, CHROMEBOOK AND NOTEBOOK STORAGE SOLUTIONS

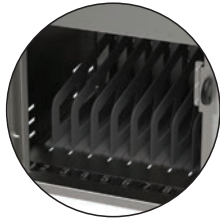


INNOVATIVE FURNITURE
connecting you with technology™

▶ SHIPS FULLY ASSEMBLED



POWER ADAPTER STORAGE DRAWER



PADED BAYS PROTECT DEVICES



STACKABLE



SECURE TO WALL



Touchboards

205 Westwood Ave, Long Branch, NJ 07740
 Phone: 866-94 BOARDS (26273) / (732)-222-1511
 Fax: (732)-222-7088 | E-mail: sales@touchboards.com

Connect10™ Locker

DESIGN SPECS

NOMINAL DIMENSIONS
 14.08"W x 16.61"D x 18.88"H

BAYS 1.25"W X 14.39" D X 10.12"H

COLORS



AVAILABLE MODELS

55489-COU Connect10 Locker w/ 10 outlet Power Strip

55489-COO Connect10 Locker w/o Power

OPTIONS

55490 Wall Hanging Kit

55491 Stacking Kit

55492 Bay Label Kit

WARRANTY

10 year cart

2 year electrical

