



# AV Credenza - Slim



NEW

Monitor & accessories not included. Options Shown.

## The One and Only AV Credenza Exclusively Designed for You

Style it your way: Choose from 1, 2, or 3 bays to securely hold your AV equipment

### TECHNOLOGY DRIVEN

- 1, 2, or 3 bay credenza with one Rack Option per bay to hold all AV technology
- Select up to 3 single-monitor or 2 dual-monitor display stands (optional) \*based on number of bays selected\*
- Display stand (optional) can hold up to one 70" monitor or two 42" monitors
- Credenza worksurface can be customized to fit your AV control cutouts

### INTEGRATOR INSPIRED

- Rack Cube (optional) can be shipped to a separate location for convenient benchtop integration by IT/AV staff
- Fixed Racks or removable Rack Cube(s) (optional) provide 3 RU for easy installation of AV equipment
- Access to AV equipment from side panels simplifies accessibility and installation
- Solid panels remove for better access to AV equipment

### DESIGNER APPROVED

- Expressions laminate and metal choices to fit your décor
- Solid panels or doors
- Made of heavy-gauge steel and laminate for a classic, elegant appearance
- Durable structure outlasts other brands

### SAFE AND SECURE

- Optional door with cam lock hasp available on two and three bay credenzas, provides superior protection and security
- ETL listed to UL 60950-1 Standard
- Heavy-gauge steel frame with durable powder coat finish
- Superior chimney-effect ventilation

EXPANDABLE  
FOR YOUR  
EXPECTATIONS



Monitor & accessories not included. Options Shown.

Questions?  
Please contact Spectrum customer service today!  
800-235-1262



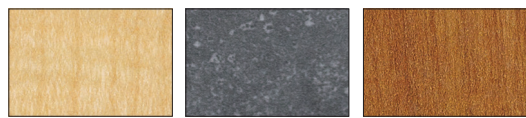
# Build Your Perfect AV Credenza

Simply follow each step below to generate your AV CREDENZA product order number.  
Record the letter or number code from each step in the corresponding boxes in this order generating chart.

AV CREDENZA	1		2	3	4	5	6	7	8
	LAMINATE	EDGE COLOR	METAL FINISH	BAYS	DOOR OPTION	RACK OPTIONS	POWER OPTION	DISPLAY OPTIONS	CAMERA MOUNT
5 5 4 9 7									

## 1 Choose Your Laminate and Edgeband Color

### STANDARD LAMINATE COLOR EXPRESSIONS



Fusion Maple with matching Edgeband | Graphite Talc with Black Edgeband | Wild Cherry with matching Edgeband



ORDER CODE **FM FM** | ORDER CODE **GT BK** | ORDER CODE **CH CH**

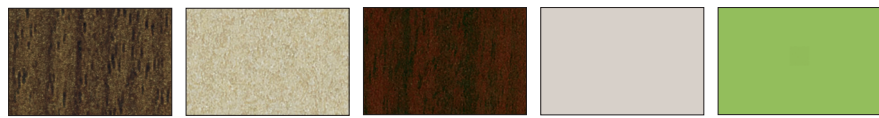
### ADDITIONAL LAMINATE COLOR EXPRESSIONS



Black with matching Edgeband | Bronze Legacy with matching Edgeband | Cafe' Sienna with matching Edgeband | Castle Oak with matching Edgeband | Chalk White Dry Erase\* with matching Edgeband



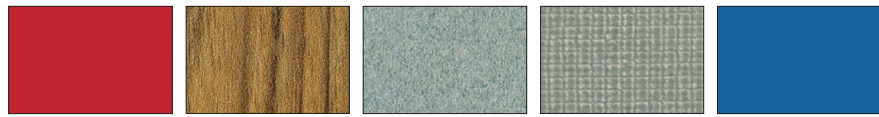
ORDER CODE **BK BK** | ORDER CODE **BL BL** | ORDER CODE **CS CS** | ORDER CODE **CK CK** | ORDER CODE **WD WD**



Colombian Walnut with matching Edgeband | Desert Zephyr with matching Edgeband | Empire Mahogany with matching Edgeband | Gray with matching Edgeband | Island with matching Edgeband



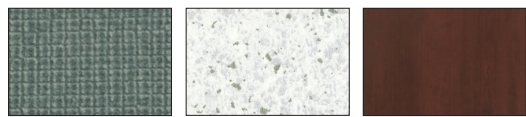
ORDER CODE **CW CW** | ORDER CODE **DZ DZ** | ORDER CODE **EM EM** | ORDER CODE **GY GY** | ORDER CODE **IG IG**



Navajo Red with matching Edgeband | Nepal Teak with matching Edgeband | Misted Zephyr with Silver North Sea Edgeband | Pewter Mesh with matching Edgeband | Royal Blue with matching Edgeband



ORDER CODE **NR NR** | ORDER CODE **NP NP** | ORDER CODE **MZ SN** | ORDER CODE **PM PM** | ORDER CODE **RB RB**



Steel Mesh with matching Edgeband | White Fiesta with Black Edgeband | Williamsburg Cherry with matching Edgeband



ORDER CODE **SM SM** | ORDER CODE **WF BK** | ORDER CODE **WC WC**

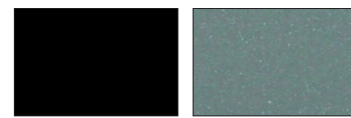


### NEED A CUSTOM COLOR?

No problem! Laminates from most manufacturers can be used on Spectrum products! Lead times, minimum quantities and cost will vary. Contact your Spectrum Rep!

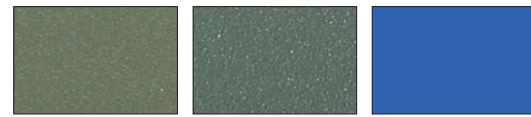
## 2 Choose Your Metal Finish

### STANDARD METAL COLOR EXPRESSIONS



ORDER CODE **B** Black | ORDER CODE **S** Silver Sparkle

### ADDITIONAL METAL COLOR EXPRESSIONS



ORDER CODE **CM** Champagne Metallic | ORDER CODE **D** Dark Gray | ORDER CODE **LB** Light Blue



ORDER CODE **LI** Lime Green | ORDER CODE **OR** Orange | ORDER CODE **SR** Signal Red



ORDER CODE **BL** Spectrum Blue | ORDER CODE **WG** Warm Gray | ORDER CODE **UW** White



ORDER CODE **YW** Yellow

## 3 Bays



ORDER CODE **1** One Bay | ORDER CODE **2** Two Bay | ORDER CODE **3** Three Bay

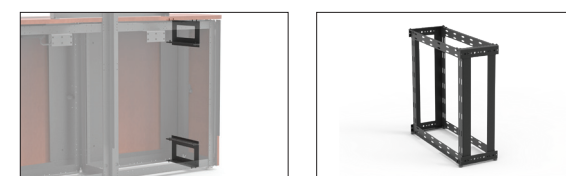
## 4 Door Option\*



ORDER CODE **2** Solid Panel | ORDER CODE **3** Solid Door-Cam Lock

\* Solid door not available on one bay credenza.

## 5 Rack Options\*\*



ORDER CODE **A** Fixed Rack Left | ORDER CODE **F** 1 Rack Cube

ORDER CODE **B** Fixed Rack Right | ORDER CODE **G** 2 Rack Cubes

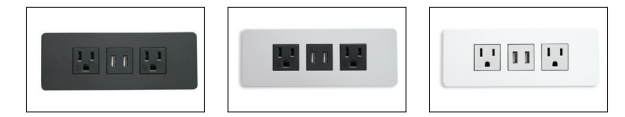
ORDER CODE **C** Fixed Rack Center | ORDER CODE **H** 3 Rack Cubes

ORDER CODE **D** Fixed Rack Left-Right | ORDER CODE **0** None

ORDER CODE **E** Fixed Rack Left-Right-Center

\*\* Rack options dependent on bays ordered. Request a Quote online for details.

## 6 Power Option



ORDER CODE **A** Power Module Black | ORDER CODE **B** Power Module Silver | ORDER CODE **C** Power Module White

ORDER CODE **D** PM Black & EM Wireless Charging Pad | ORDER CODE **E** PM Silver & EM Wireless Charging Pad | ORDER CODE **F** PM White & EM Wireless Charging Pad

ORDER CODE **G** EM Wireless Charging Pad | ORDER CODE **H** Custom

ORDER CODE **0** None

## 7 Display Options†



ORDER CODE **A** 1 Single Monitor Display Stand | ORDER CODE **B** 2 Single Monitor Display Stands | ORDER CODE **C** 3 Single Monitor Display Stands<sup>2</sup>



ORDER CODE **D** 1 Dual Monitor Display Stand | ORDER CODE **E** 2 Dual Monitor Display Stands | ORDER CODE **0** None

† Display options dependent on bays ordered. Request a Quote online for details.  
‡ 3 Single Monitor Display Stands will only fit up to 2 monitors horizontally.

## 8 Camera Mount<sup>3</sup>



ORDER CODE **1** Camera Mount | ORDER CODE **0** None

<sup>3</sup>Fits on Display Stand from selection 7.

# EXPAND YOUR CONFERENCE SPACE



DURABLE AND SECURE DESIGN



1, 2, OR 3 BAYS AVAILABLE WITH SOLID PANELS OR DOORS



OPTIONAL 3RU FIXED RACK OR RACK CUBE



SIMPLE INSTALLATION AND ACCESS TO AV EQUIPMENT FROM SIDE PANELS



SHIPS FULLY ASSEMBLED

Get integrated quick with Spectrum's great lead time.



## AV Credenza-Slim

AV Credenza must be secured to a wall.

### PRODUCT DIMENSIONS

Single Unit Width	26.5"W X 13.6"D X 30"H
Double Unit Width	50.5"W X 14.75"D X 30"H
Triple Unit Width	74.5"W X 16.5"D X 30"H
Rack Units	3RU Per Fixed Rack or Rack Cube

### WARRANTY

10 Year Credenza
2 Year Electrical

### AVAILABLE MODELS

55497	AV Credenza - Slim
-------	--------------------

### OPTIONS/ACCESSORIES

55517	3RU Rack Cube
55516	3RU Fixed Rack
55498	Single Monitor Display Stand
55499	Dual Monitor Display Mount Kit (must order with 55498)
55518	Camera Mount
99058	Power Module
99057	EM Wireless Charging Pad

Monitor & accessories not included. Options Shown.

